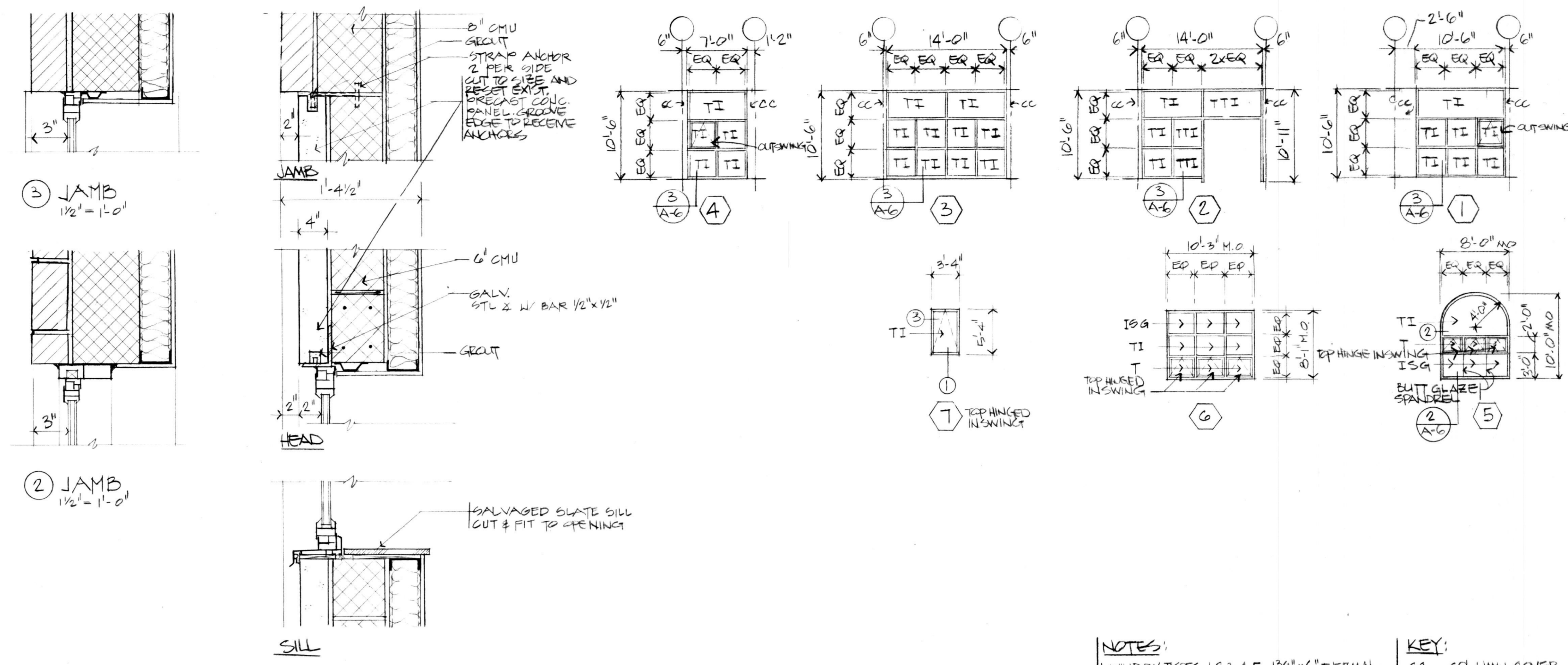


A

B



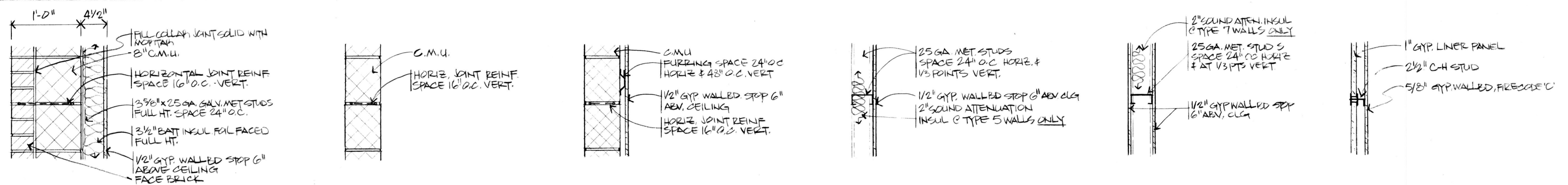
SECTION @
1 1/2" = 1'-0"
SECTION @
1 1/2" = 1'-0"
SECTION @
1 1/2" = 1'-0"

NOTES:
1. WINDOW TYPES 1, 2, 3, 4, 5. 1 3/4" x 6" THERMAL BREAK FRAMES TO RECEIVE 1" INSUL. GLASS. OPERABLE VENT FRAMES 1 7/8" D. SET INTO LARGER FRAME AND SHALL ALSO BE THERMAL BREAK TYPE FOR 1" INSUL. GLASS.
2. WINDOW TYPES 6, 7. 1 7/8" DEEP FRAMING (THERMAL BREAK) TO RECEIVE 1" INSUL. GLASS.

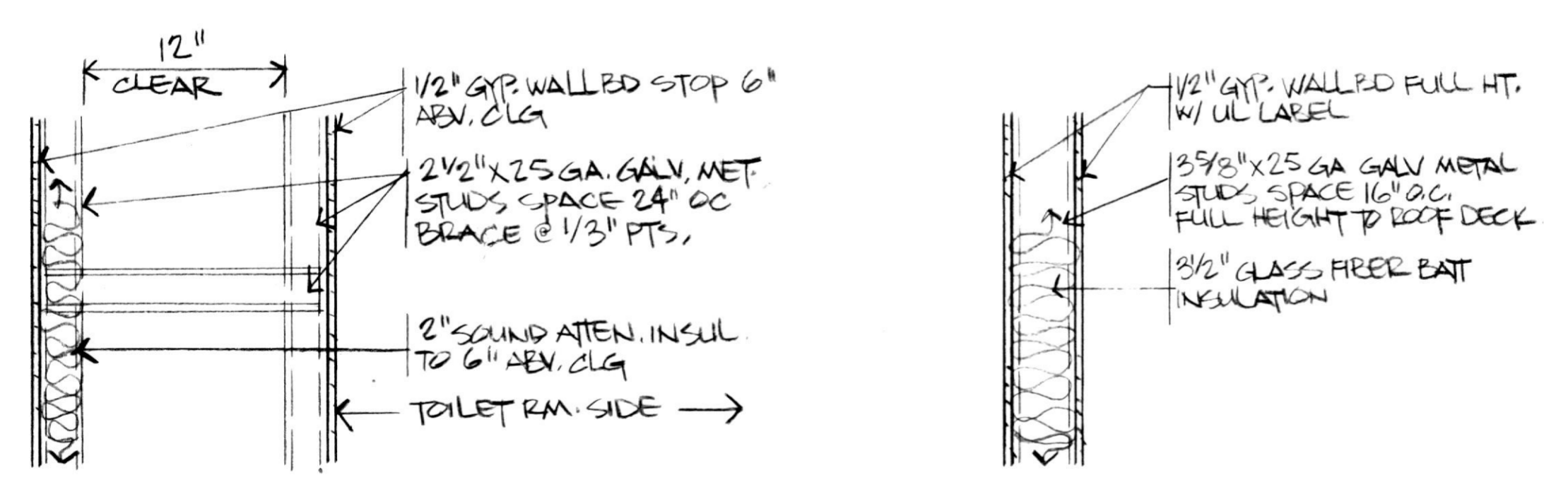
KEY:
CC COLUMN COVER
ISG INSULATED SPANDREL GLASS
TI TINTED INSULATING GLASS
TTI TEMPERED TINTED INSULATING GLASS
T TINTED GLASS
TISG TEMPERED INSULATED SPANDREL GLASS

C

D

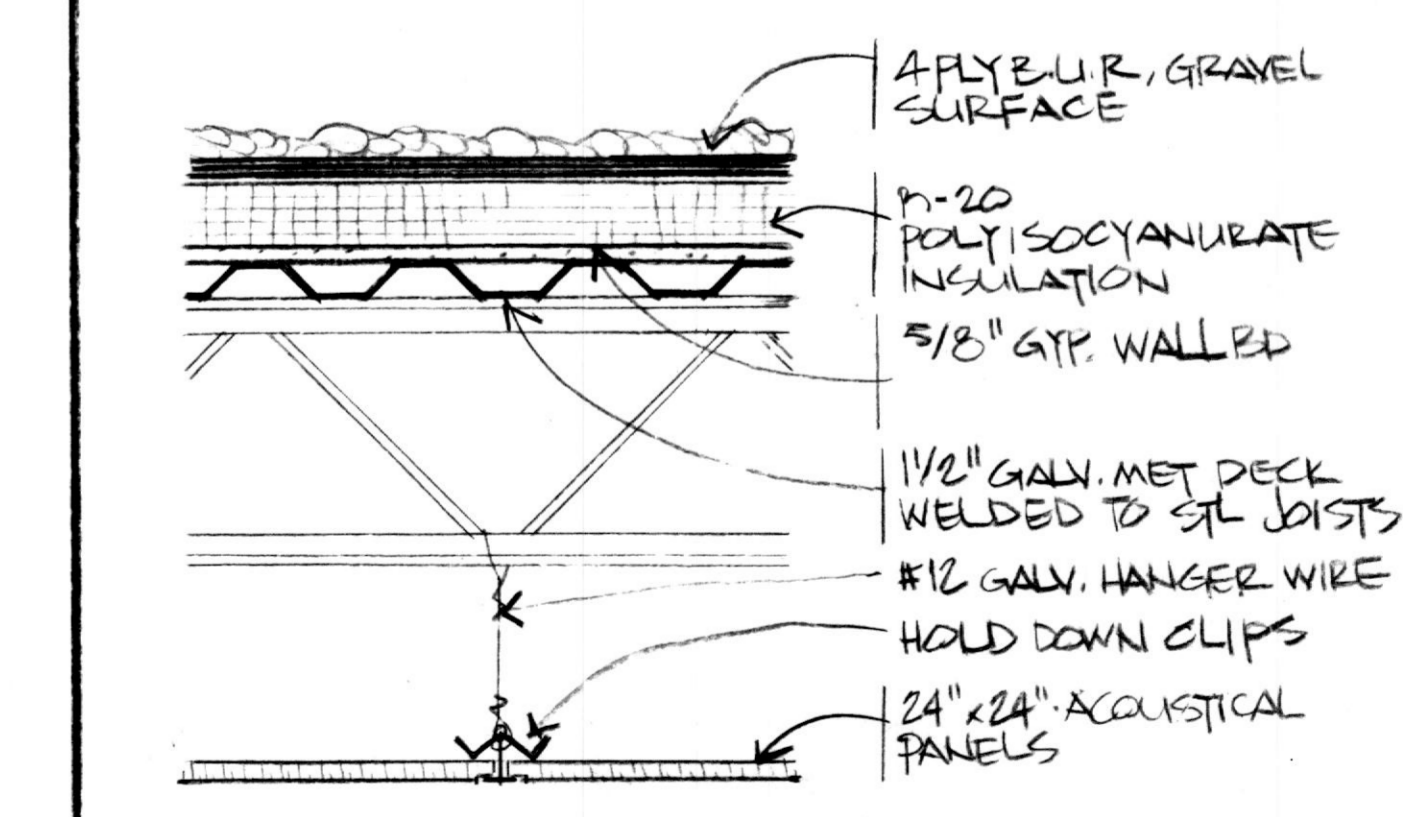


1
2 A = 4" CMU
B = 6" CMU
C = 8" CMU
3 A = 4" CMU
B = 6" CMU
C = 8" CMU
4 5 A = 1 5/8" STUD
B = 2 1/2" STUD
C = 3 5/8" STUD
D = 6" STUD
6 7 A = 1 5/8" STUD
B = 2 1/2" STUD
C = 3 5/8" STUD
D = 6" STUD
8 ONE HOUR FIRE RESISTANT RATED UL DESIGN # U4469



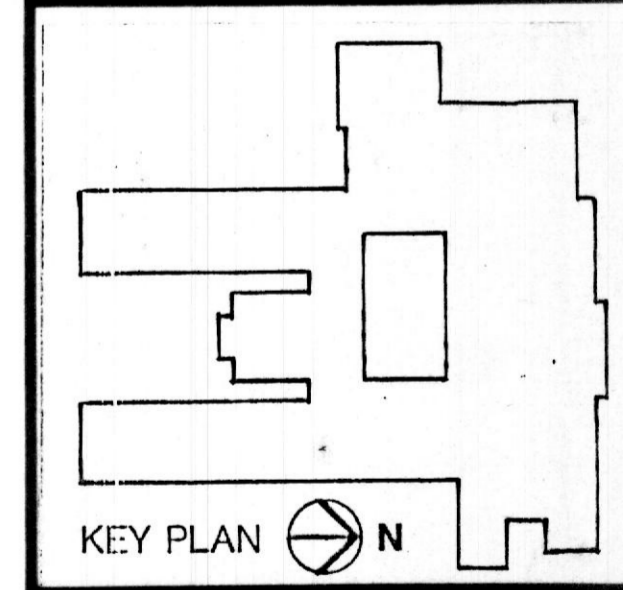
9
10 ONE HOUR FIRE RESISTANT RATED DESIGN UL DES # U4468

ROOF CONSTRUCTION TYPE 1



ONE HOUR RATED, UL DESIGN # P225

No.	Date	Description
REVISIONS		



Additions and Renovations to
NOTRE DAME PREPARATORY SCHOOL
Towson, Maryland

CONSTRUCTION TYPES: WINDOW, WALL & ROOF

PROJ NO 9060	DWG NO A-9
DATE MAY 28, 1991	