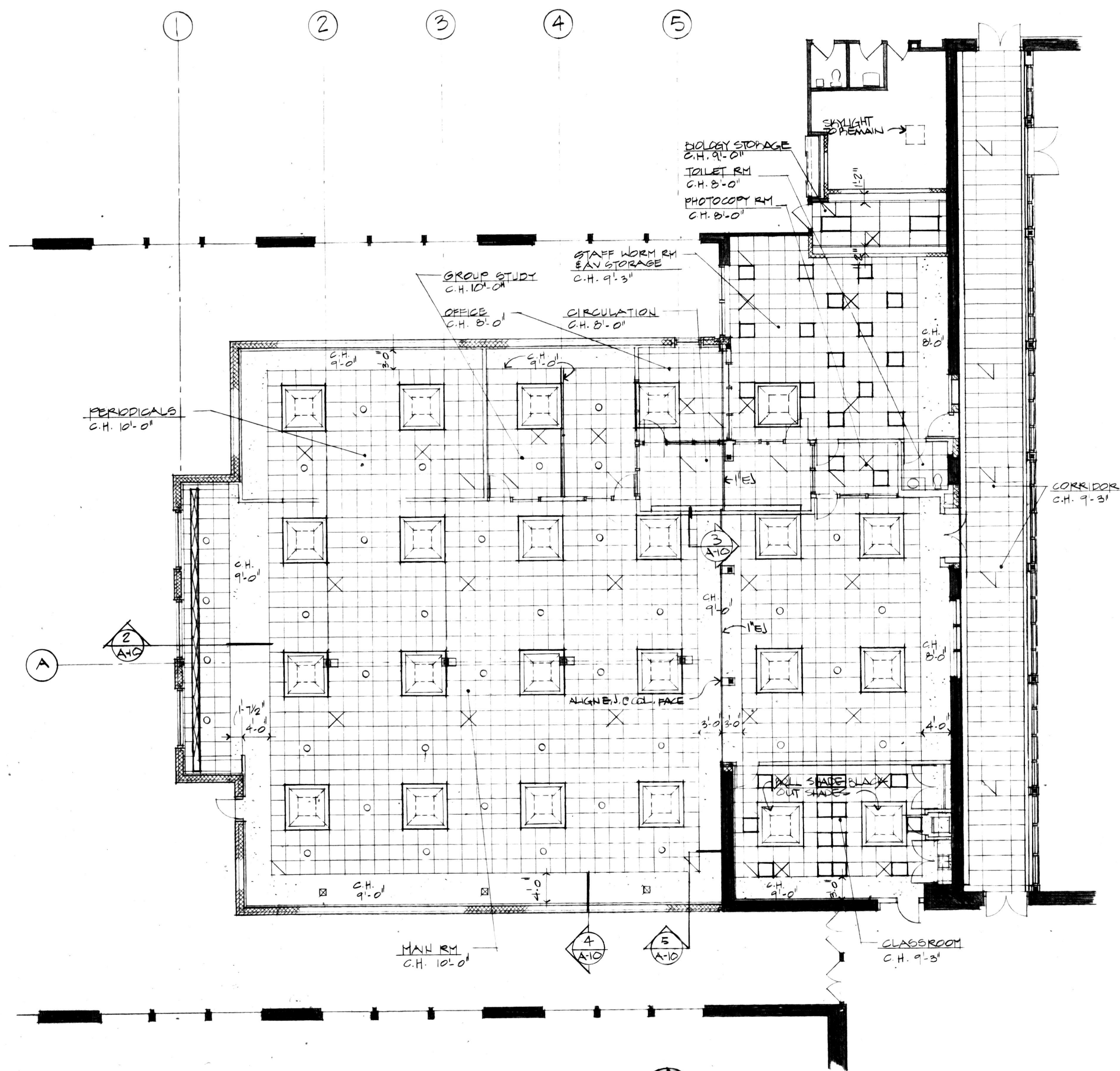
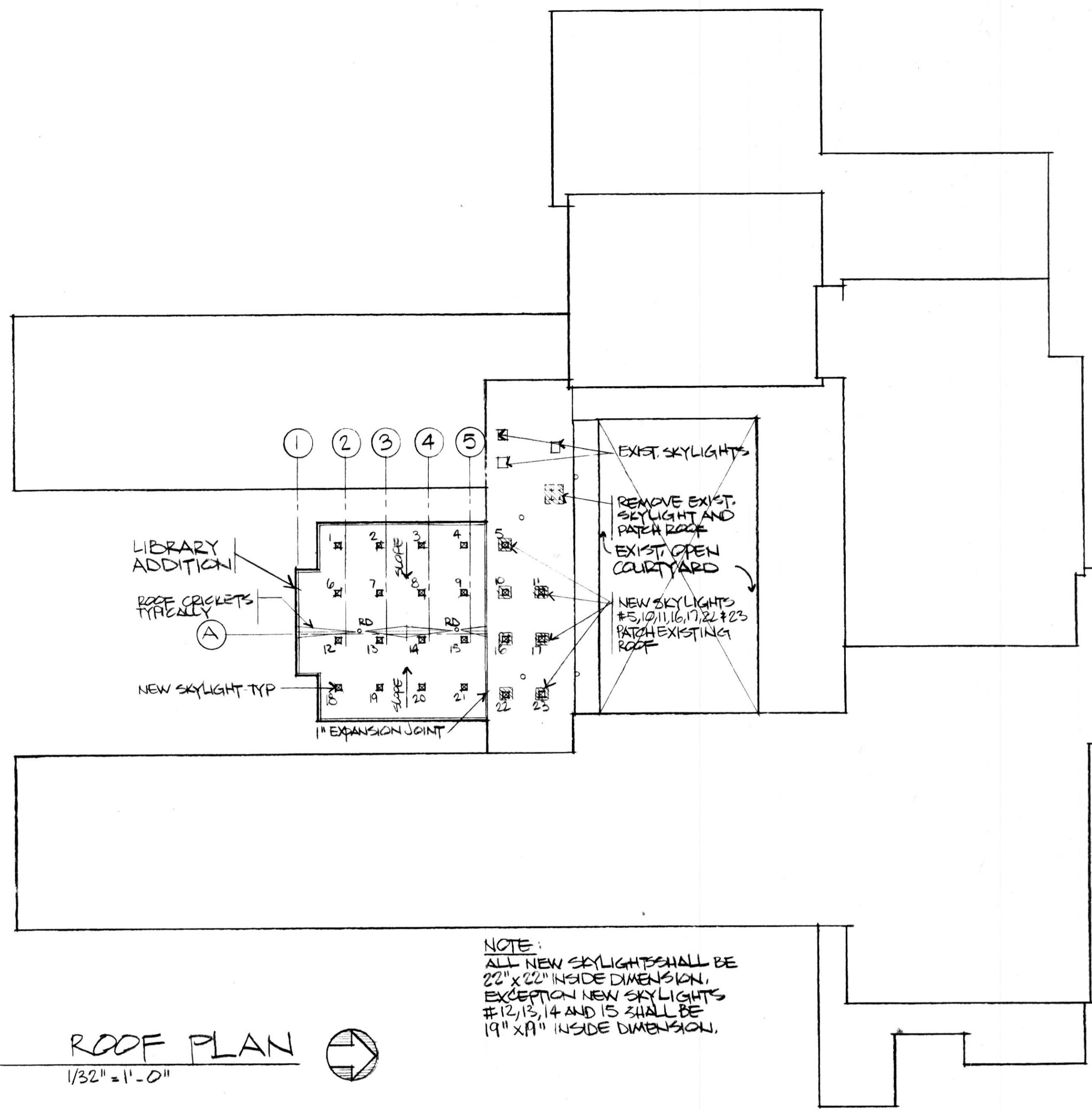


**CEILING KEY**

- 2x2' ACOUSTIC CEILING TILE
- 2x4' ACOUSTIC CEILING TILE
- PAINTED GYPSUM DRYWALL
- DIFFUSER
- R.A. GRILLE
- LINEAR DIFFUSER
- 2x2' FLUORESCENT LIGHT FIXTURE
- 2x4' FLUORESCENT LIGHT FIXTURE
- RECESSED FLUORESCENT COVE FIXTURE
- PENDANT TYPE INDIRECT FIXTURE

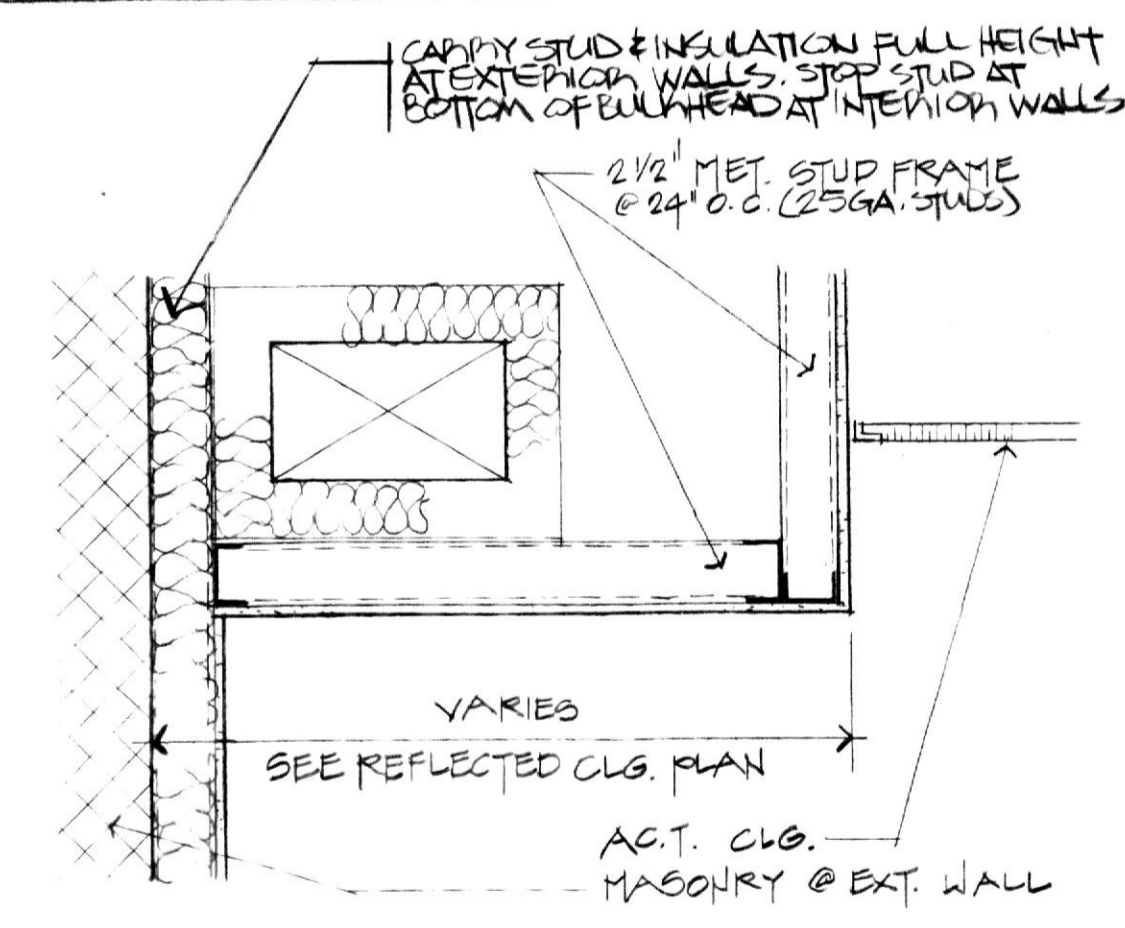


1 REFLECTED CEILING PLAN  
1/8" = 1'-0"  
CALLED NORTH

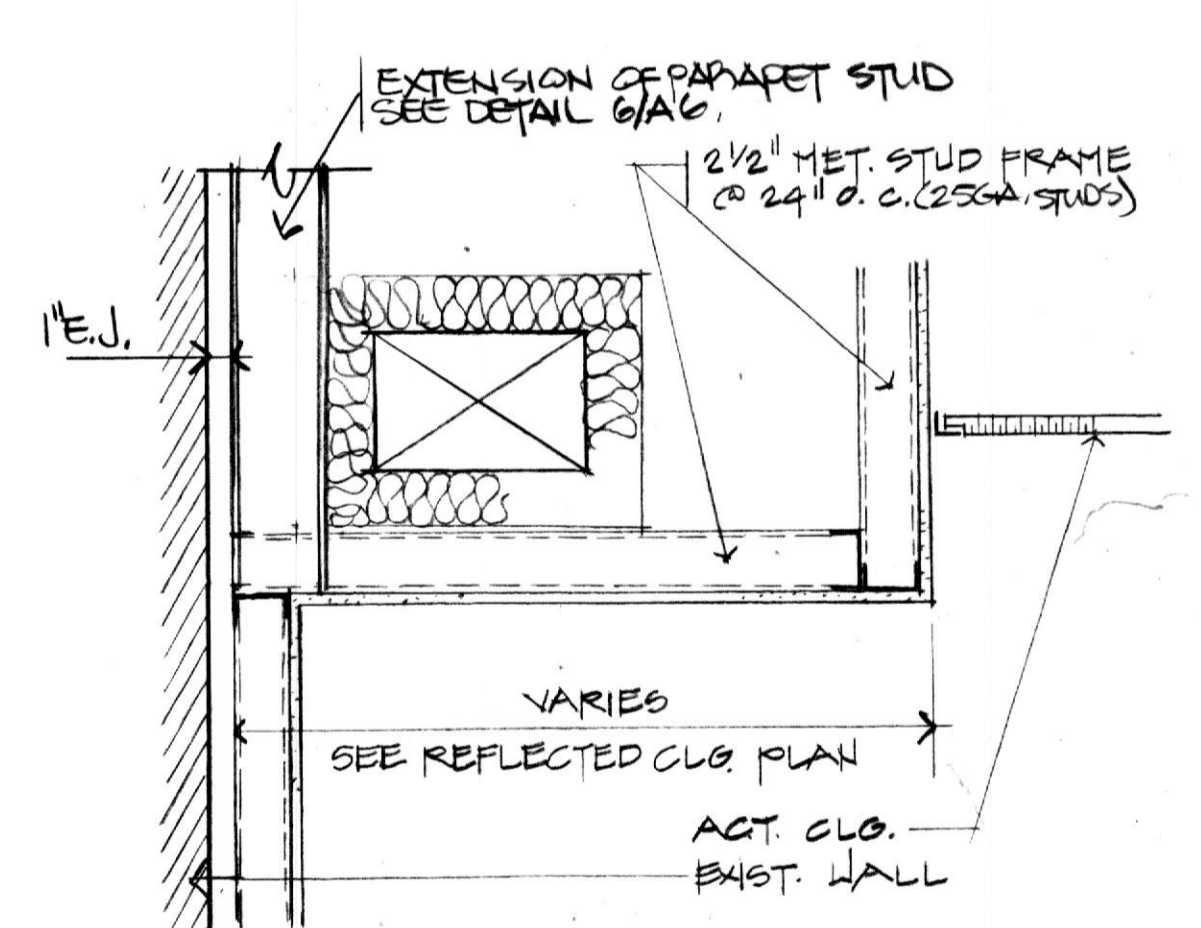


6 ROOF PLAN  
1/32" = 1'-0"

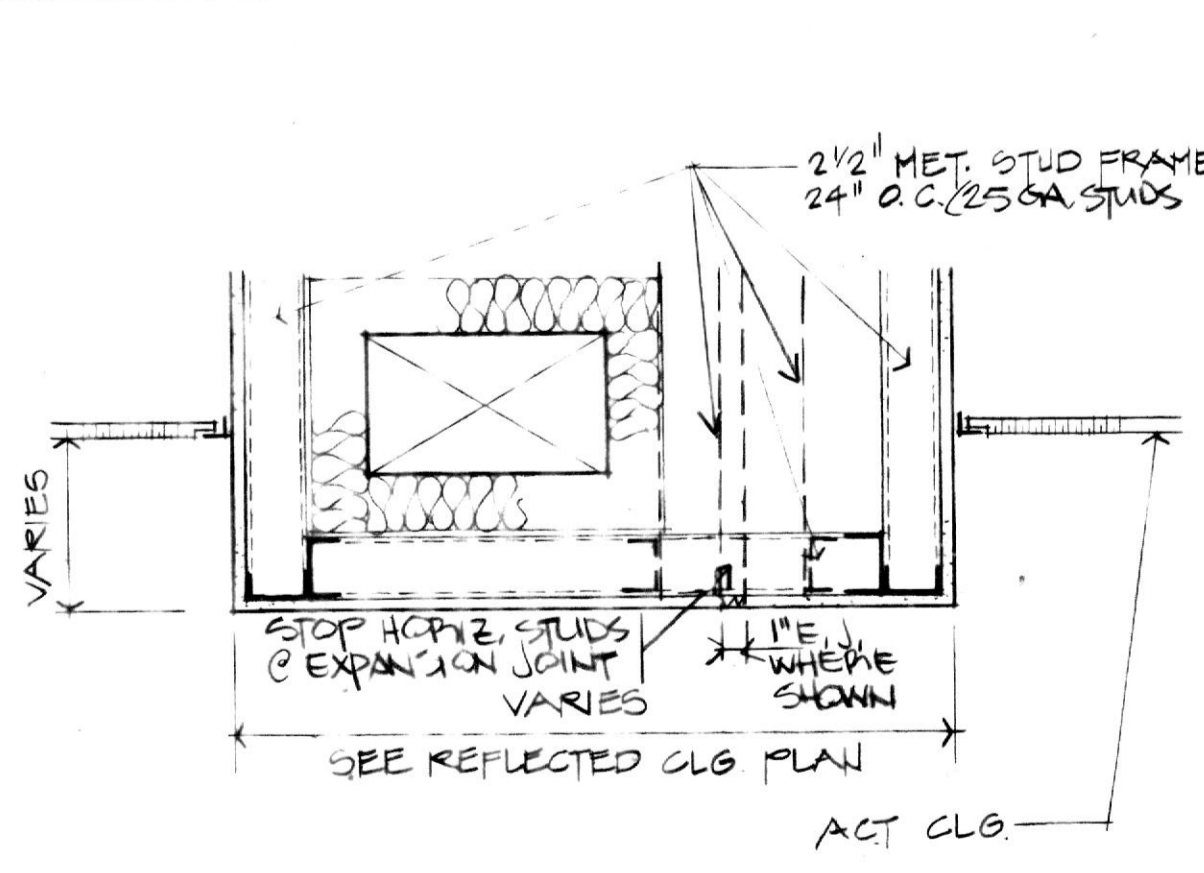
NOTE:  
ALL NEW SKYLIGHTS SHALL BE 22" X 22" INSIDE DIMENSION.  
EXCEPTION NEW SKYLIGHTS #12, 13, 14 AND 15 SHALL BE 19" X 19" INSIDE DIMENSION.



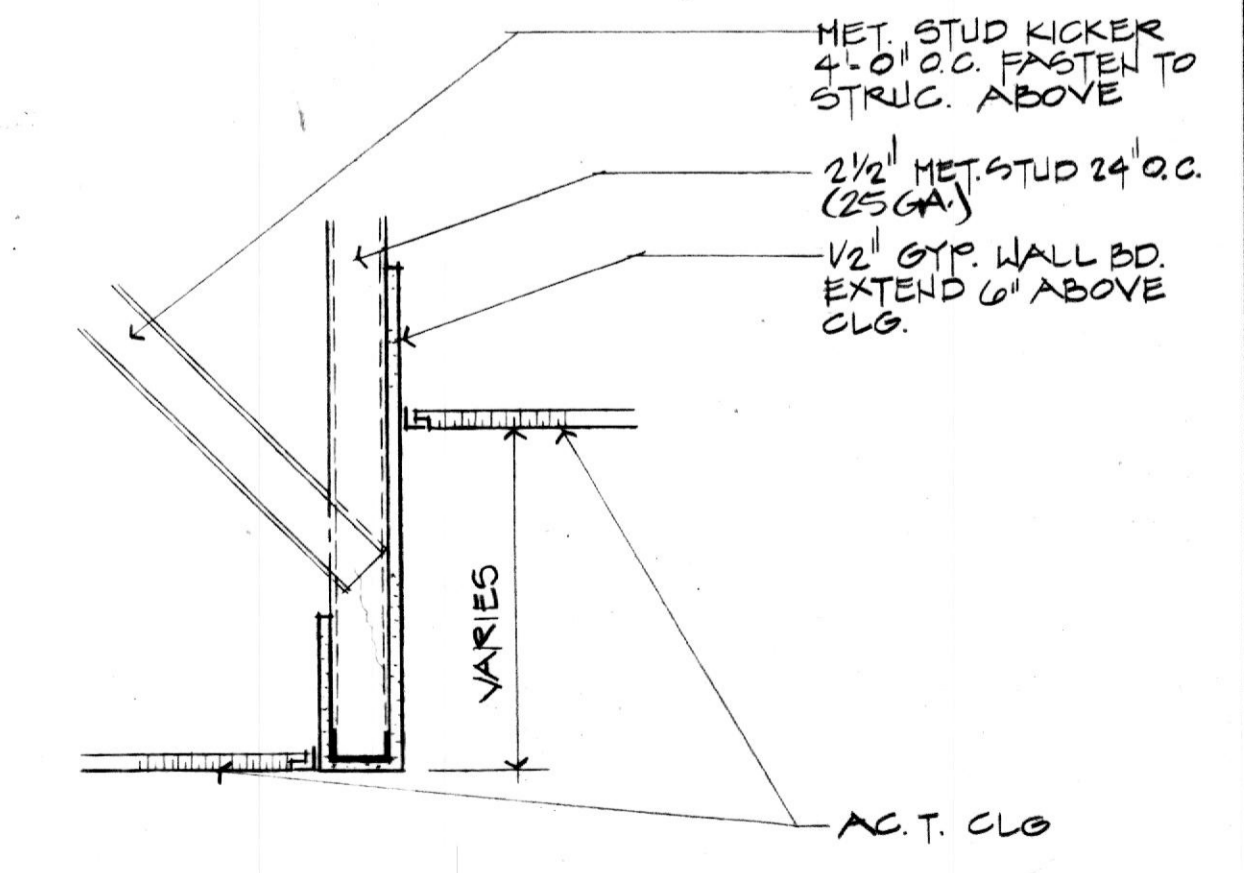
4 BULKHEAD @ WALL  
1/2" = 1'-0"



5 BULKHEAD @ EXPANSION JOINT  
1/2" = 1'-0"

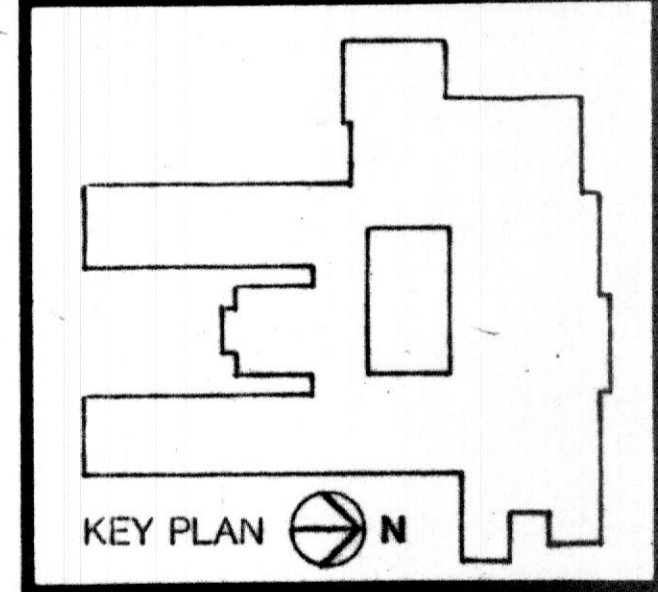


2 TYPICAL BULKHEAD  
1/2" = 1'-0"



3 BULKHEAD @ CIRCULATION DESK  
1/2" = 1'-0"

No.	Date	Description
REVISIONS		



Notre Dame Preparatory School  
Towson, Maryland

LIBRARY REFLECTED CEILING PLAN & ROOF PLAN

PROJ NO 9060	DWG NO A-10
DATE MAY 28, 1991	