



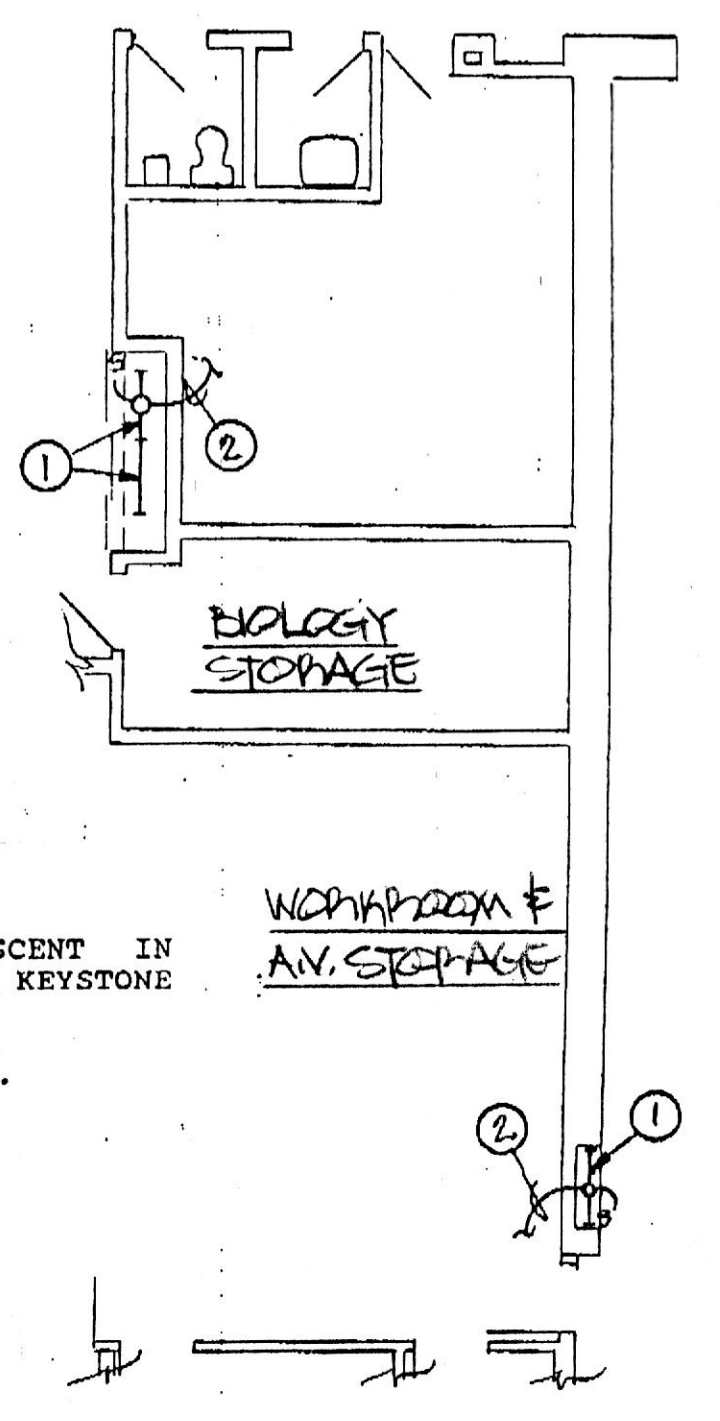
810 Light Street Baltimore Maryland 21230

**Kibart, Inc.**  
CONSULTING ENGINEERS  
901 Dulany Valley Rd. Towson Md 21284

**DRAWING NOTES**

- 1 PROVIDE 2-1P20A CIRCUIT BREAKERS IN EXISTING SPACES NEW BREAKER SHALL MATCH EXISTING.
- 2 CONNECT TO NEW 1P20A CIRCUIT BREAKER IN EXISTING PANEL "EL-2".
- 3 LOW VOLTAGE RELAY SWITCHING. REFER TO DETAIL ON DRAWING E-4.
- 4 EXISTING LIGHTING FIXTURE TO BE REMOVED. REMOVE ALL ASSOCIATED WIRING, RACEWAY, SWITCHES ETC.
- 5 EXISTING ELECTRICAL DEVICE TO BE REMOVED. REMOVE ALL ASSOCIATED WIRING, RACEWAY, SWITCHES ETC.
- 6 EXISTING SOUND SYSTEM SPEAKER SHALL BE REMOVED. REMOVE ALL WIRING BACK TO NEW JUNCTION BOX FOR FUTURE CONNECTION TO NEW SPEAKERS.
- 7 JUNCTION BOX FOR CONNECTION OF NEW SPEAKERS TO EXISTING SOUND SYSTEM ZONE.

Add the following note to Drawing "E-1 Demolition Plan and New Lighting - Library": Electrical contractor shall provide all wiring associated with the temperature control equipment.  
(1-1)



- DRAWING NOTES**
- 1 PROVIDE 3'-0" STRIP FLUORESCENT IN DISPLAY CASE. FIXTURE SHALL BE KEYSTONE #CS-130-120-LE-WITH LAMP.
  - 2 CONNECT TO NEAREST 120V CIRCUIT.

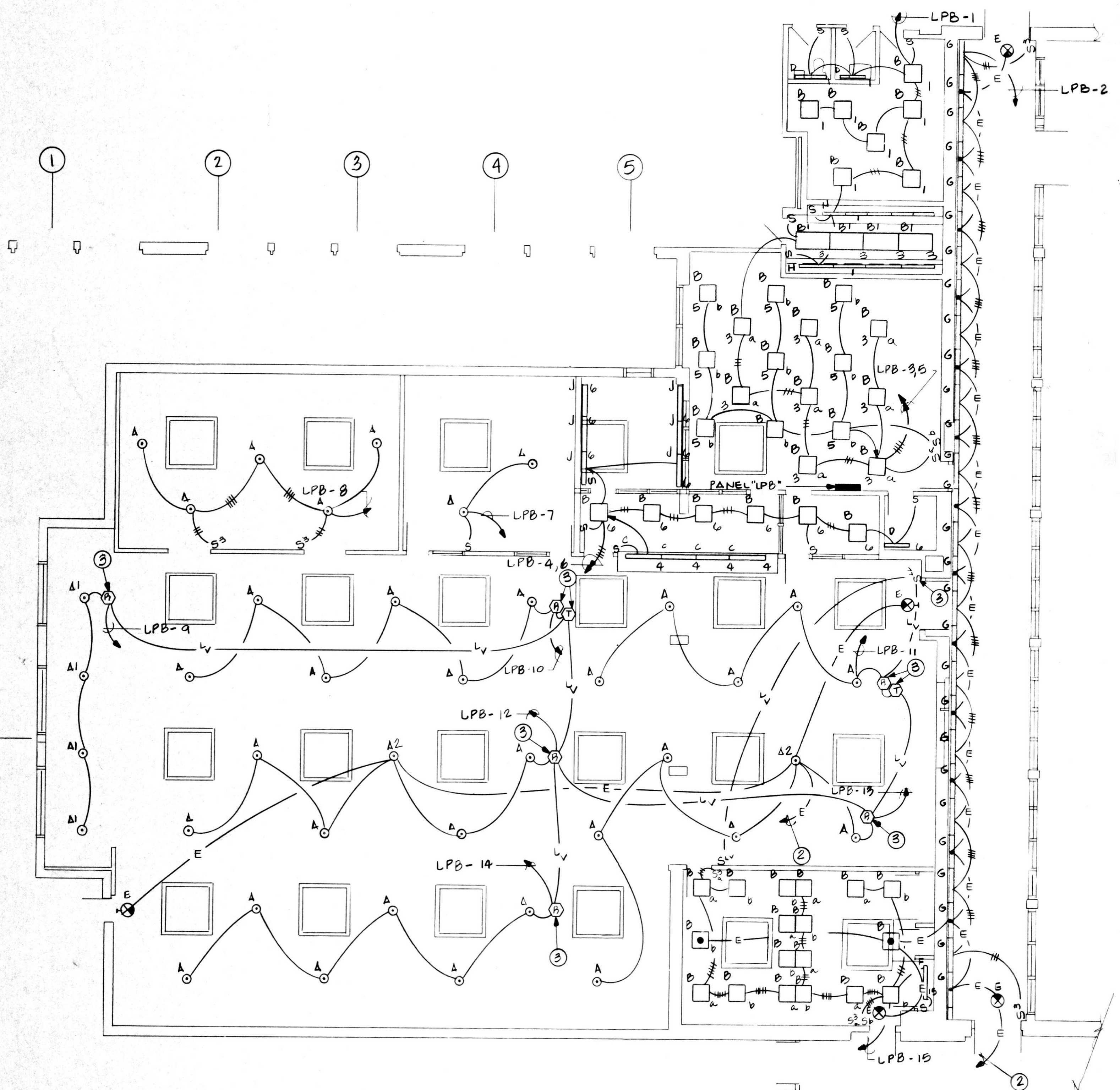
WIRING FROM E.A.V. STORAGE

**Gaudreau, Inc.**  
Architects Planners Engineers

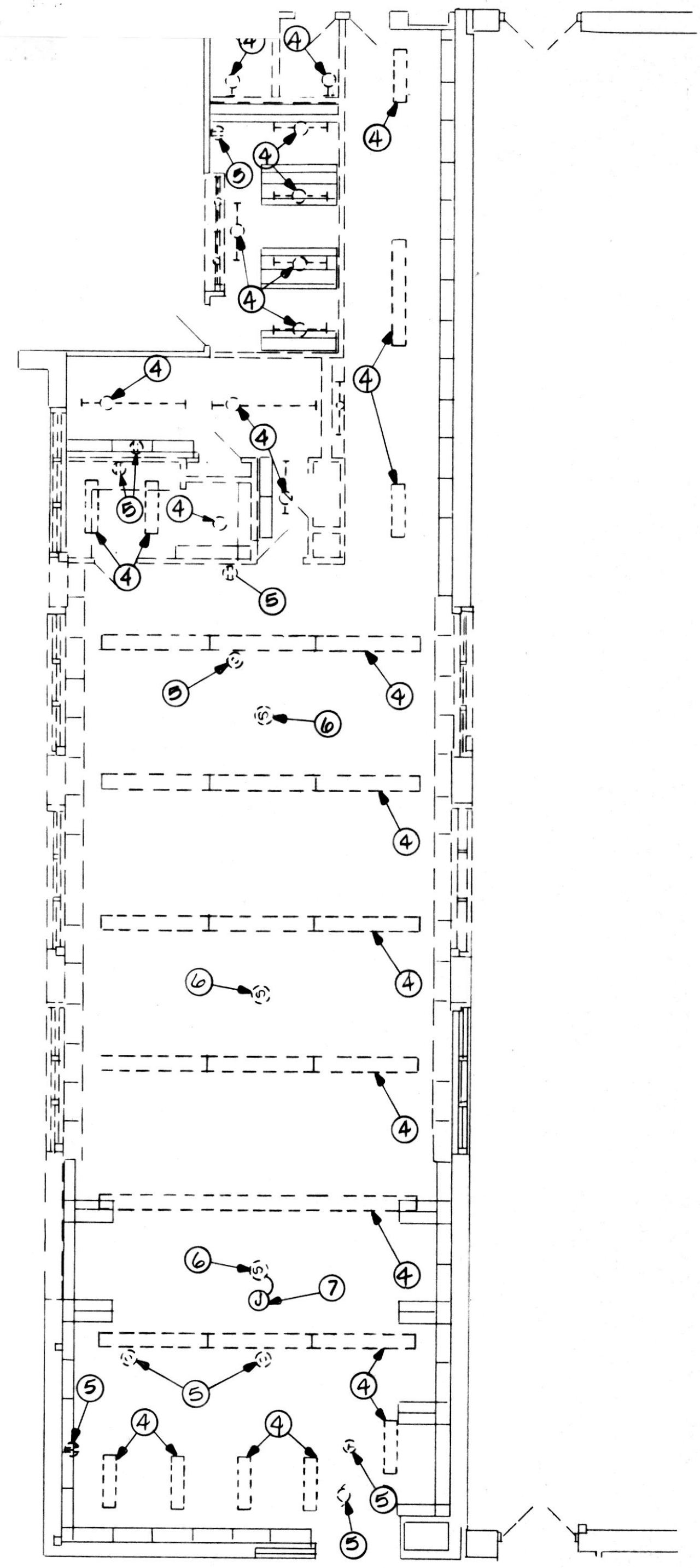
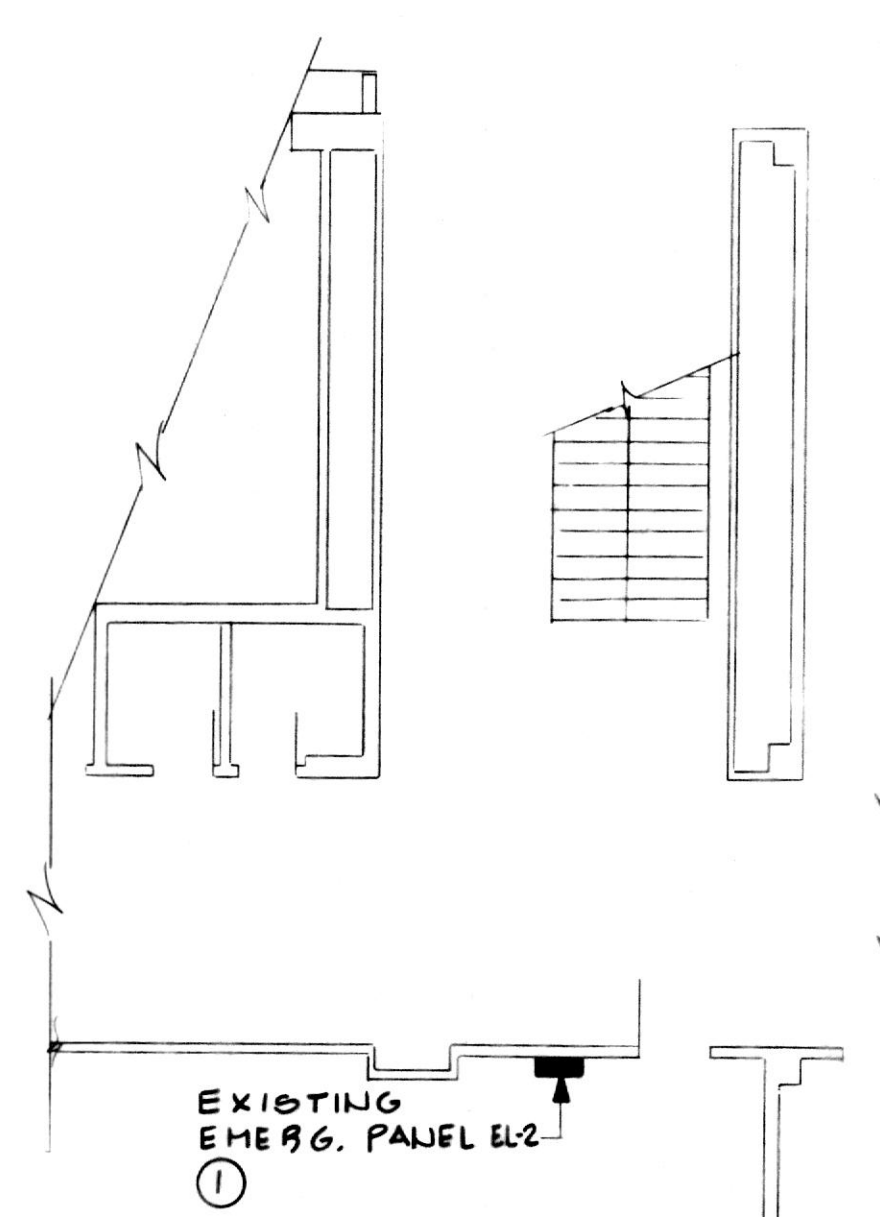
ADDENDUM NO. 1  
LIBRARY ALTERATION & ADDITIONS  
NOTRE DAME PREPARATORY SCHOOL  
PART ONE OF PHASE ONE  
LIGHTING AT DISPLAY CASES

1-12

PROJ. NO. 119060  
DATE 02/14/91  
DWG. NO. AC03

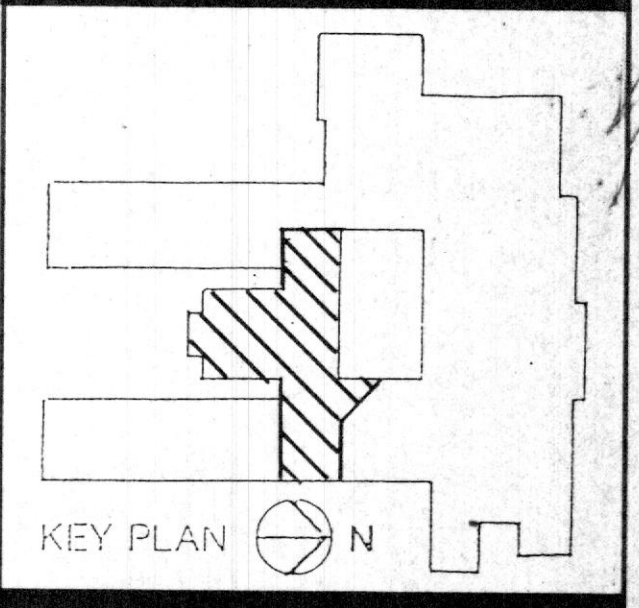


LIBRARY ADDITION - FLOOR PLAN - LIGHTING  
SCALE: 1/8" = 1'-0"



EXISTING LIBRARY - DEMOLITION WORK  
SCALE: 1/8" = 1'-0"

NO.	DATE	DESCRIPTION
REVISIONS		



Additions and Renovations to  
**NOTRE DAME PREPARATORY SCHOOL**  
Towson, Maryland

**DEMOLITION PLAN & NEW LIGHTING - LIBRARY -**

PROJ. NO.	DWG. NO.
DATE	E-1
MAY 26, 1991	