

LIGHTING FIXTURE SCHEDULE

TYPE	DESCRIPTION	VOLTAGE	MTG.	LAMPS	MANUF. AC.
A	DIRECT/INDIRECT METAL HALIDE	120	24" STEM SUSPENDED	1-250W METAL HALIDE	LAM LE-1042-250W/C-T 24"-45 F
A1	DIRECT/INDIRECT METAL HALIDE	120	24" STEM SUSPENDED	1-175W METAL HALIDE	LAM LE-1042-175W/C-TW-24"-45 F
A2	DIRECT/INDIRECT METAL HALIDE WITH EMERGENCY LAMP AND RELAY	120	24" STEM SUSPENDED	1-250W MH 2-125W	LAM LE-1042-250W/C TW-24"-45-F-REL
B	2x2 FLUORESCENT PARABOLIC TROFFER	120	RECESSED	2-40W	LITHONIA 29W-CR-160-16-120
B1	2x4 FLUORESCENT TROFFER	120	RECESSED	2-F40T12/CW	201-240-A12-120-ES LIGHTOLIER
C	4" FLUORESCENT W/ PARABOLIC LOUVERS	120	SUSPENDED	2-40W	LIGHTOLIER COP-1342 S481
D	2" WALL MOUNTED FLUORESCENT	120	WALL MOUNTED	2-20W	LIGHTOLIER
E	EXIT SIGN	120	SURFACE/ CEILING	2-AC	DUAL-LITE EXQUISITE SERIES
G	FLUORESCENT COVE	120	SURFACE	2-F40-112 RS-CU	LIGHTOLIER IPTS-4-SERIES
H	4" UNDERCOUNTER FLUORESCENT FIXTURE	120	SURFACE	1-F40-112 RS-CU	LIGHTOLIER J1024-B
J	12" WALL MOUNTED DIRECT/INDIRECT FLUORESCENT	120	WALL	2-F40-112 RS-CU	LAM PROFILE 300 SERIES FB-340-12/12

PANEL SCHEDULE = LPS # 120/208 VOLT, 3 PHASE, 4 WIRE, 400 AMP M.L.O. WITH GROUND BUS

QCT. NO.	FOR	FRAME	BRANCH BREAKERS POLES	TRIP	QCT. NO.	FOR	FRAME	BRANCH BREAKERS POLES	TRIP
1	LIGHTING	100	1	20	2	LIGHTING	100	1	20
3	LIGHTING	100	1	20	4	LIGHTING	100	1	20
5	LIGHTING	100	1	20	6	LIGHTING	100	1	20
7	LIGHTING	100	1	20	8	LIGHTING	100	1	20
9	LIGHTING	100	1	20	10	LIGHTING	100	1	20
11	LIGHTING	100	1	20	12	LIGHTING	100	1	20
13	LIGHTING	100	1	20	14	LIGHTING	100	1	20
15	LIGHTING	100	1	20	16	LIGHTING	100	1	20
17	RECEPTACLE	100	1	20	18	RECEPTACLE	100	1	20
19	RECEPTACLE	100	1	20	20	REFRIGERATOR	100	1	20
21	RECEPTACLE	100	1	20	22	COUNTER	100	1	20
23	RECEPTACLE	100	1	20	24	RECEPTACLE	100	1	20
25	RECEPTACLE	100	1	20	26	RECEPTACLE	100	1	20
27	RECEPTACLE	100	1	20	28	RECEPTACLE	100	1	20
29	RECEPTACLE	100	1	20	30	RECEPTACLE	100	1	20
31	RECEPTACLE	100	1	20	32	RECEPTACLE	100	1	20
33	RECEPTACLE	100	1	20	34	RECEPTACLE	100	1	20
35	RECEPTACLE	100	1	20	36	RECEPTACLE	100	1	20
37	COPIER	100	1	20	38		100	1	20
39	RECEPTACLE	100	1	20	40		100	1	20
41		100	1	20	42		100	1	20
43					44	EXHAUST FAN	100	1	20
45	REHEAT COIL	100	3	30	46	EXHAUST FAN	100	1	20
47					48	WATER HEATER	100	1	20
49					50				
51	REHEAT COIL	100	3	30	52	REHEAT COIL	100	3	150
53					54				
55					56	RECEPTACLES	100	1	20
57	REHEAT COIL	100	3	30	58	RECEPTACLES	100	1	20
59					60	SPARE	100	1	20
61					62	SPARE	100	1	20
63	REHEAT COIL	100	3	40	64	SPARE	100	1	20
65					66	SPARE	100	1	20
67					68	SPARE	100	1	20
69	REHEAT COIL	100	3	70	70	SPARE	100	1	20
71					72	SPARE	100	1	20
73					74	SPARE	100	1	20
75	RTU	400	3	250	76	SPACE W/BUS	100	1	----
77					78	SPACE W/BUS	100	1	----
79	SPACE W/BUS	100	1	----	80	SPACE W/BUS	100	1	----
81	SPACE W/BUS	100	1	----	82	SPACE W/BUS	100	1	----
83	SPACE W/BUS	100	1	----	84	SPACE W/BUS	100	1	----

FIRE ALARM ZONES

- ZONE 1 - LOWER LEVEL - NORTHWEST - SPRINKLER
- ZONE 2 - LOWER LEVEL - SOUTHEAST - SPRINKLER
- ZONE 3 - MAIN LEVEL - CAFE - SPRINKLER
- ZONE 4 - MAIN LEVEL - AUDITORIUM - SPRINKLER
- ZONE 5 - MAIN LEVEL - POOL/GYM - SPRINKLER
- ZONE 6 - MAIN LEVEL - ADMINISTRATION - SPRINKLER
- ZONE 7 - MAIN LEVEL - LIBRARY - SPRINKLER
- ZONE 8 - MAIN LEVEL - SOUTHWEST - SPRINKLER
- ZONE 9 - MAIN LEVEL - SOUTHEAST - SPRINKLER
- ZONE 10 - UPPER LEVEL - EAST - SPRINKLER
- ZONE 11 - LOWER LEVEL - NORTHWEST - PULL STATION - (FUTURE)
- ZONE 12 - LOWER LEVEL - SOUTHEAST - PULL STATION - (FUTURE)
- ZONE 13 - MAIN LEVEL - CAFE - PULL STATION - (FUTURE)
- ZONE 14 - MAIN LEVEL - AUDITORIUM - PULL STATION - (FUTURE)
- ZONE 15 - MAIN LEVEL - POOL/GYM - PULL STATION - (FUTURE)
- ZONE 16 - MAIN LEVEL - ADMINISTRATION - PULL STATION - (FUTURE)
- ZONE 17 - MAIN LEVEL - LIBRARY - PULL STATION - (FUTURE)
- ZONE 18 - MAIN LEVEL - SOUTHWEST - PULL STATION - (FUTURE)
- ZONE 19 - MAIN LEVEL - SOUTHEAST - PULL STATION - (FUTURE)
- ZONE 20 - UPPER LEVEL - EAST - PULL STATION - (FUTURE)
- ZONE 21 - LOWER LEVEL - NORTHWEST - DUCT DETECTOR - (FUTURE)
- ZONE 22 - LOWER LEVEL - SOUTHEAST - DUCT DETECTOR - (FUTURE)
- ZONE 23 - MAIN LEVEL - CAFE - DUCT DETECTOR - (FUTURE)
- ZONE 24 - MAIN LEVEL - AUDITORIUM - DUCT DETECTOR - (FUTURE)
- ZONE 25 - MAIN LEVEL - POOL/GYM - DUCT DETECTOR - (FUTURE)
- ZONE 26 - MAIN LEVEL - ADMINISTRATION - DUCT DETECTOR - (FUTURE)
- ZONE 27 - MAIN LEVEL - LIBRARY - DUCT DETECTOR - (FUTURE)
- ZONE 28 - MAIN LEVEL - SOUTHWEST - DUCT DETECTOR - (FUTURE)
- ZONE 29 - MAIN LEVEL - SOUTHEAST - DUCT DETECTOR - (FUTURE)
- ZONE 30 - UPPER LEVEL - EAST - DUCT DETECTOR - (FUTURE)
- ZONE 31 - LOWER LEVEL - NORTHWEST - SMOKE DETECTOR - (FUTURE)
- ZONE 32 - LOWER LEVEL - SOUTHEAST - SMOKE DETECTOR - (FUTURE)
- ZONE 33 - MAIN LEVEL - CAFE - SMOKE DETECTOR - (FUTURE)
- ZONE 34 - MAIN LEVEL - AUDITORIUM - SMOKE DETECTOR - (FUTURE)
- ZONE 35 - MAIN LEVEL - POOL/GYM - SMOKE DETECTOR - (FUTURE)
- ZONE 36 - MAIN LEVEL - ADMINISTRATION - SMOKE DETECTOR - (FUTURE)
- ZONE 37 - MAIN LEVEL - SOUTHWEST - SMOKE DETECTOR - (FUTURE)
- ZONE 38 - MAIN LEVEL - SOUTHEAST - SMOKE DETECTOR - (FUTURE)
- ZONE 39 - UPPER LEVEL - EAST - SMOKE DETECTOR - (FUTURE)
- ZONE 40 - SPRINKLER MAIN
- ZONE 41 - SPRINKLER STAGE
- ZONE 42 - LOWER LEVEL - NORTHWEST - SPRINKLER TROUBLE
- ZONE 43 - LOWER LEVEL - SOUTHEAST - SPRINKLER TROUBLE
- ZONE 44 - MAIN LEVEL - CAFE - SPRINKLER TROUBLE
- ZONE 45 - MAIN LEVEL - AUDITORIUM - SPRINKLER TROUBLE
- ZONE 46 - MAIN LEVEL - POOL/GYM - SPRINKLER TROUBLE
- ZONE 47 - MAIN LEVEL - ADMINISTRATION - SPRINKLER TROUBLE
- ZONE 48 - MAIN LEVEL - LIBRARY - SPRINKLER TROUBLE
- ZONE 49 - MAIN LEVEL - SOUTHWEST - SPRINKLER TROUBLE
- ZONE 50 - MAIN LEVEL - SOUTHEAST - SPRINKLER TROUBLE
- ZONE 51 - UPPER LEVEL - EAST - SPRINKLER TROUBLE
- ZONE 52 - 60 - SPARES

ELECTRICAL LEGEND

- SWITCH - SINGLE POLE, THREWAY, SUBSCRIPT DENOTES OUTLET CONTROLLED.
- FIXTURE - FLUORESCENT - RECESSED
- FIXTURE - SUSPENDED
- EXIT SIGN
- PANELBOARD - AS NOTED M.H. 6'-6" TO TOP
- DENOTES EQUIPMENT AS EXISTING
- SPEAKER
- DISCONNECT SWITCH - UNFUSED, FUSED
- FIRE ALARM PULL STATION
- FIRE ALARM AUDIBLE SIGNAL AND VISUAL FLASHER
- SPECIAL EQUIPMENT - AS NOTED
- RECEPTACLE - 20A - 125 VOLTS - DUPLEX, DOUBLE DUPLEX, BOTTOM HALF SWITCH M.H. 1'-6"
- SPECIAL RECEPTACLE - AS NOTED
- THERMAL MANUAL STARTER M.H. 5'-4"
- MOTOR - HORSEPOWER AS NOTED
- TELEPHONE OUTLET
- 1/2" EMPTY RACEWAY UP TO CEILING SPACE AND CAP FOR FUTURE COMPUTER CABLELING
- FIRE ALARM WATER FLOW SWITCH
- FIRE ALARM VALVE POSITION SWITCH
- FIRE ALARM DUCT SMOKE DETECTOR
- ELECTRIC RESISTANT HEAT - AS NOTED
- WEATHERPROOF
- GROUND FAULT INTERRUPTION



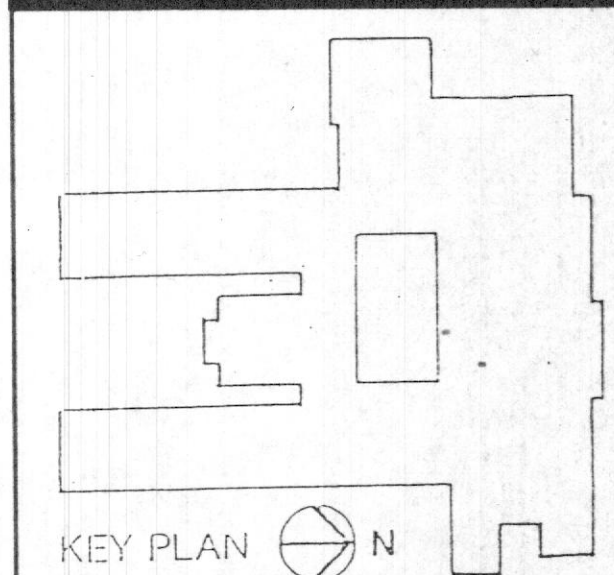
810 Light Street Baltimore Maryland 21230



901 Dulaney Valley Rd. Towson Md 21204

NO.	DATE	DESCRIPTION

REVISIONS

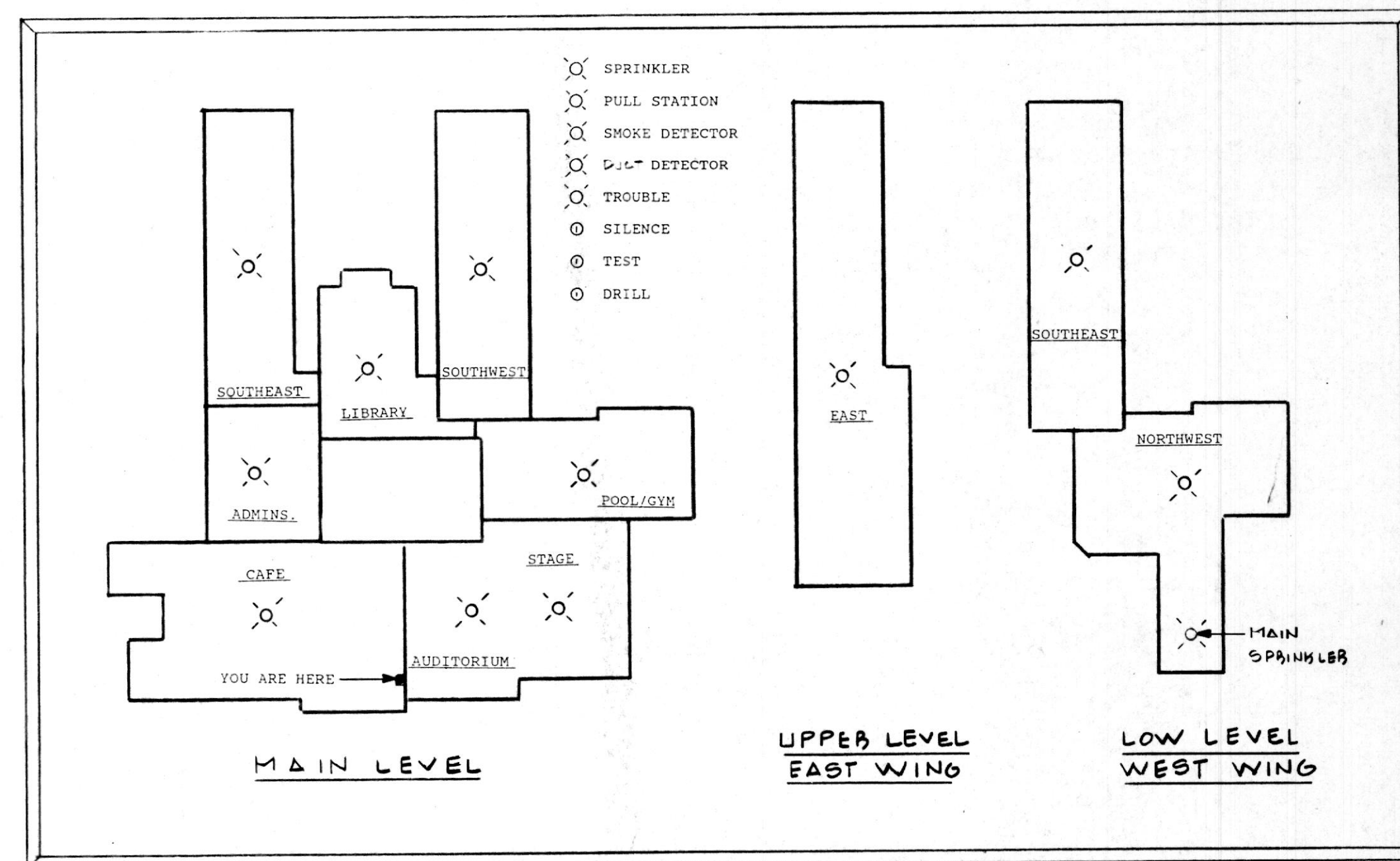


Additions and Renovations to

NOTRE DAME PREPARATORY SCHOOL  
Towson, Maryland

SCHEDULES, LEGEND & DETAILS

PROJ. NO	DWG. NO
DATE	E-4
MAY 28, 1991	



FIRE ALARM - GRAPHIC ANNUNCIATOR  
NOT TO SCALE