



RUBELING & ASSOCIATES, INC.
ARCHITECTURE
INTERIOR DESIGN

401 JEFFERSON AVENUE
TOWSON, MARYLAND 21286-5308
410-337-2886
FAX: 410-337-2974



Century Engineering, Inc.
32 West Road
Towson, Maryland 21284
Voice (410) 823-8070
Fax (410) 823-2184

DRAWING NOTES:

- ① CONNECTOR WITH SLOPED TOP ALUMINUM ENCLOSURE AND FRONT RETURN GRILLE, 188 WATTS/LINEAR FOOT, 3" WIDE BY 10" HIGH. 27V/19W/60HZ. UNIT SHALL BE COMPLETE WITH ALL END CAPS, SPLICE SECTIONS, MOUNTING BRACKETS AND OTHER HARDWARE FOR A COMPLETE AND PROFESSIONAL INSTALLATION. BERKO MODEL 1CST
- ② DUCTLESS SPLIT SYSTEM COOLING UNIT "MITSUBISHI" "MS09TW" 8500 BTUH COOLING. INDOOR UNIT "MS09TW" 0.5 MCA, 15A MAX FUSE, 120V/1Ø/60HZ. OUTDOOR UNIT "MU09TW" 15A MAX TIME DELAY FUSE, MCA 11, 115V/1Ø/60HZ. FURNISH COMPLETE WITH REFRIGERANT AND PIPING FULLY CHARGED, REMOTE CONTROLLER, FILTERS, DISCONNECT SWITCH, AND MOUNTINGS. LOCATE OUTDOOR UNIT AS INDICATED. COORDINATE SIZE AND QUANTITY OF REFRIGERANT PIPES PER MANUFACTURER'S RECOMMENDATIONS AND ROUTE PIPING IN A NEAT AND PROFESSIONAL MANNER. PIPING SHALL BE INSULATED PER MANUFACTURER'S RECOMMENDATIONS. EXTERIOR INSULATION SHALL BE COATED WITH 2 COATS OF UV INHIBITIVE COVERING. PIPE 3/4" CONDENSATE DRAIN PIPING TO POINT INDICATED ON PLUMBING DRAWINGS. UNIT SHALL BE MOUNTED NEAR CEILING. THERMOSTAT/CONTROLLER SHALL BE MOUNTED ON WALL 60" ABOVE FINISHED FLOOR ON SAME WALL AS UNIT IN ELEVATOR MACHINE ROOM.

**SPORTS AND FITNESS CENTER
NOTRE DAME PREPARATORY SCHOOL**
815 HAMPTON LANE
TOWSON, MARYLAND 21286

95% SUBMISSION

REVISIONS:

NO.	DESCRIPTION	DATE

LAST REV.:

PROJECT NO.: 02-037

DATE: 2-19-03

SCALE: AS NOTED

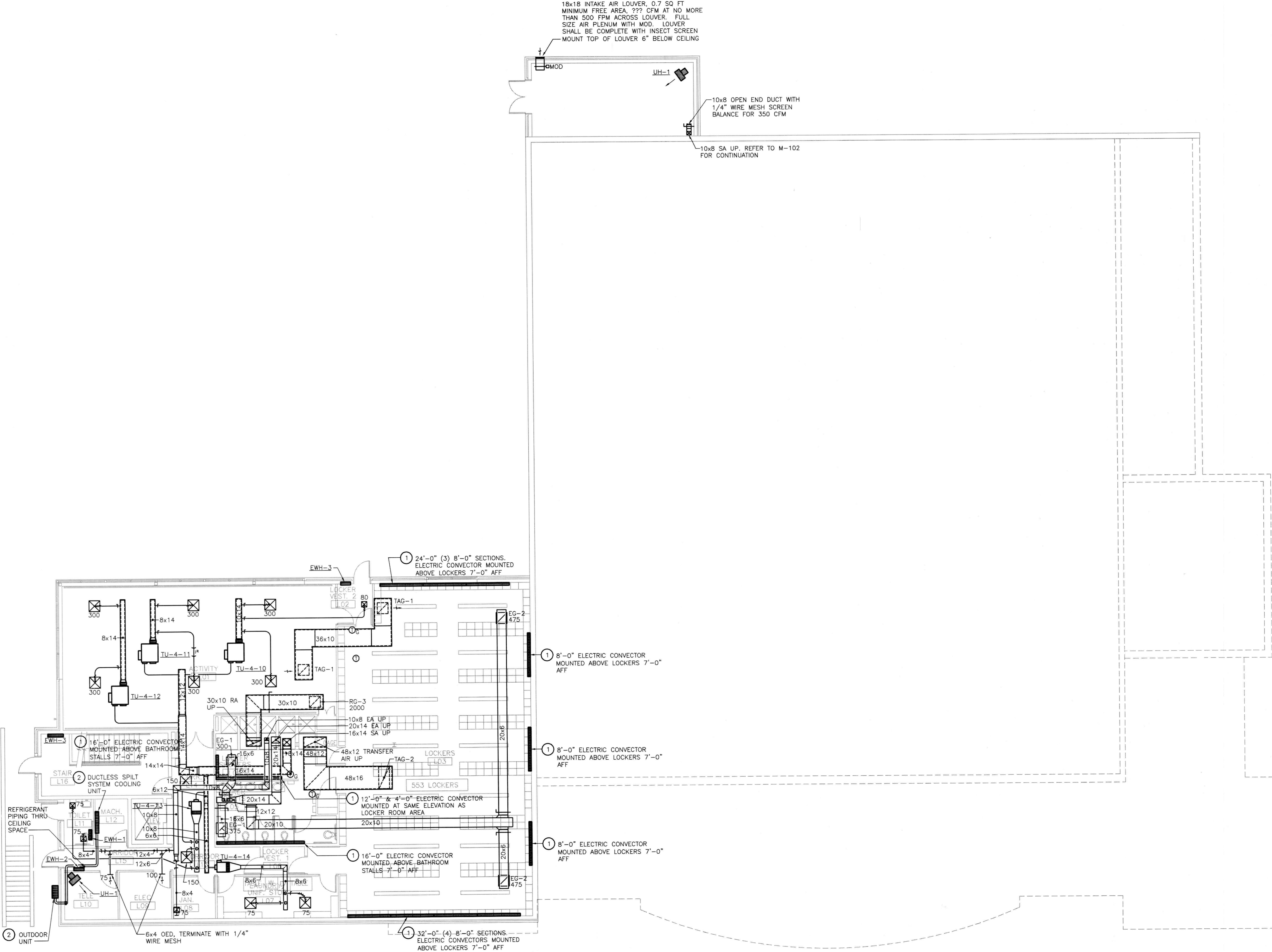
TITLE:

LOWER LEVEL FLOOR PLAN - HVAC

SHEET:

M

101



LOWER LEVEL FLOOR PLAN - HVAC

SCALE: 1/8" = 1'-0"



22111.01