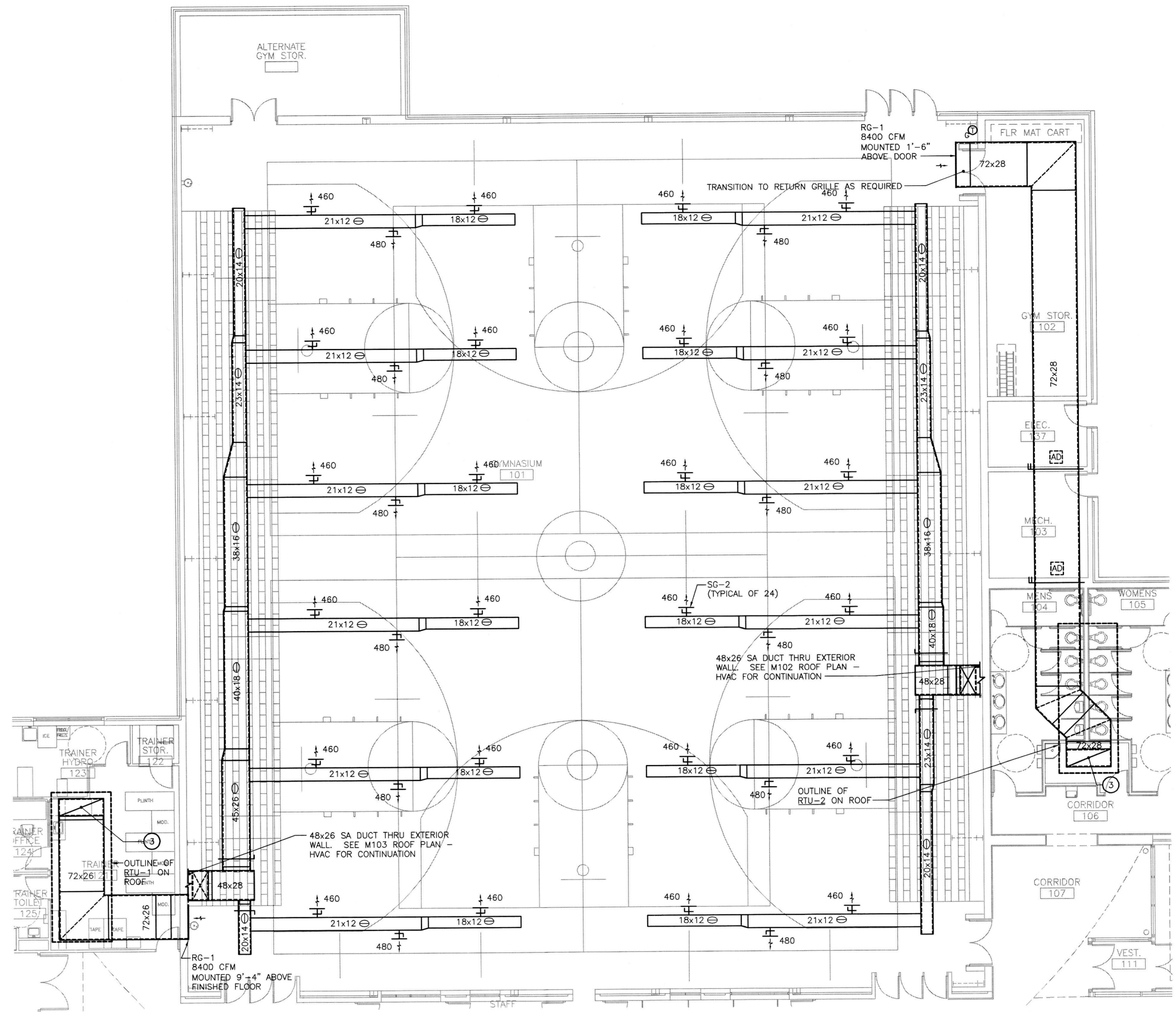
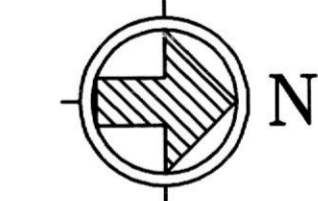


A B C D E F G H J K L M N P Q R S T U



- DRAWING NOTES:**
- 48x30 SIDEWALL TRANSFER AIR GRILLE, 2800 CFM, MOUNTED 6'-0" AFF TO BOTTOM OF GRILLE.
 - 80x16 RA UP, TRANSITION TO UNIT AS REQUIRED WITH DUCT SMOKE DETECTOR IN VERTICAL. CONNECT TO UNIT THRU FLEXIBLE DUCT CONNECTION.
 - 72x26 RA UP, TRANSITION IN VERTICAL TO UNIT OPENING AS REQUIRED. CONNECT TO UNIT WITH FLEXIBLE DUCT CONNECTION.

ADD ALTERNATE PART PLAN GYMNASIUM - HVAC
 SCALE: 1/8" = 1'-0"



RUBELING & ASSOCIATES, INC.
 ARCHITECTURE
 INTERIOR DESIGN
 401 JEFFERSON AVENUE
 TOWSON, MARYLAND 21286-5308
 410-337-2888
 FAX: 410-337-2974



Century Engineering, Inc.
 62 West Road
 Towson, Maryland 21284
 Voice (410) 823-8970
 Fax (410) 823-2184

**SPORTS AND FITNESS CENTER
 NOTRE DAME PREPARATORY SCHOOL**
 815 HAMPTON LANE
 TOWSON, MARYLAND 21286

95% SUBMISSION

REVISIONS:		
NO.	DESCRIPTION	DATE

LAST REV.:
 PROJECT NO.: 02-037
 DATE: 2-19-03
 SCALE: AS NOTED

TITLE:
**ADD ALTERNATE
 PART PLAN
 GYMNASIUM
 - HVAC**

SHEET:
M

102A

22111.01