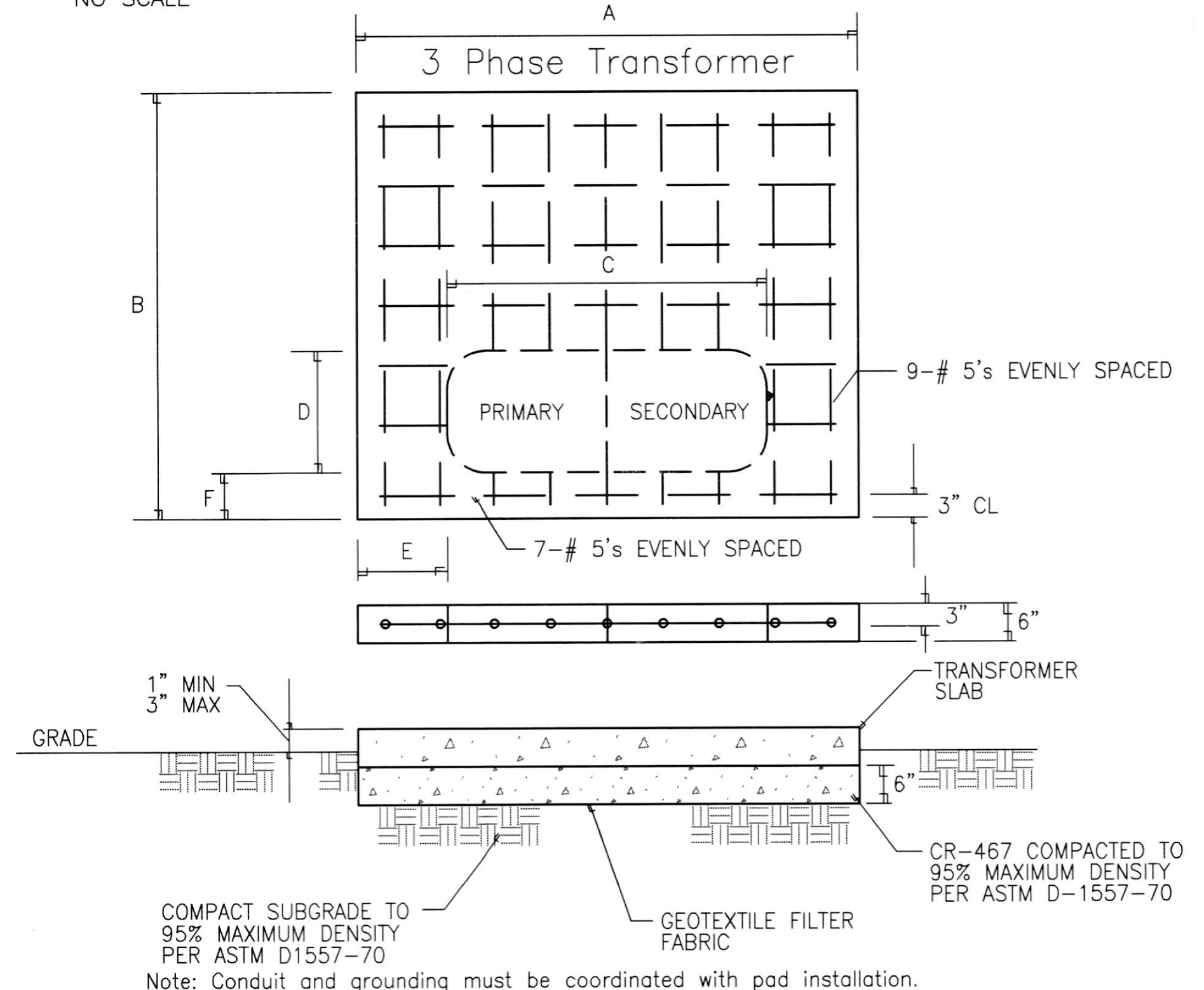


- Notes:**
- A. The number of secondary conduits shall not exceed 12 total.
 - B. Secondary conduit shall be centered symmetrically within 18" X 16" area.
 - C. Approximate weight of precast pad is 2200 pounds for 500 kVA & smaller transformers (No. 12-668) or 3900 pounds for 750 kVA & larger transformers (No. 12-790).
 - D. Customer to Install Copper-Coated Ground Rod as required to avoid incoming conduits.
 - E. XX-XXX numbers refer to BGE Material Numbers BGE00516

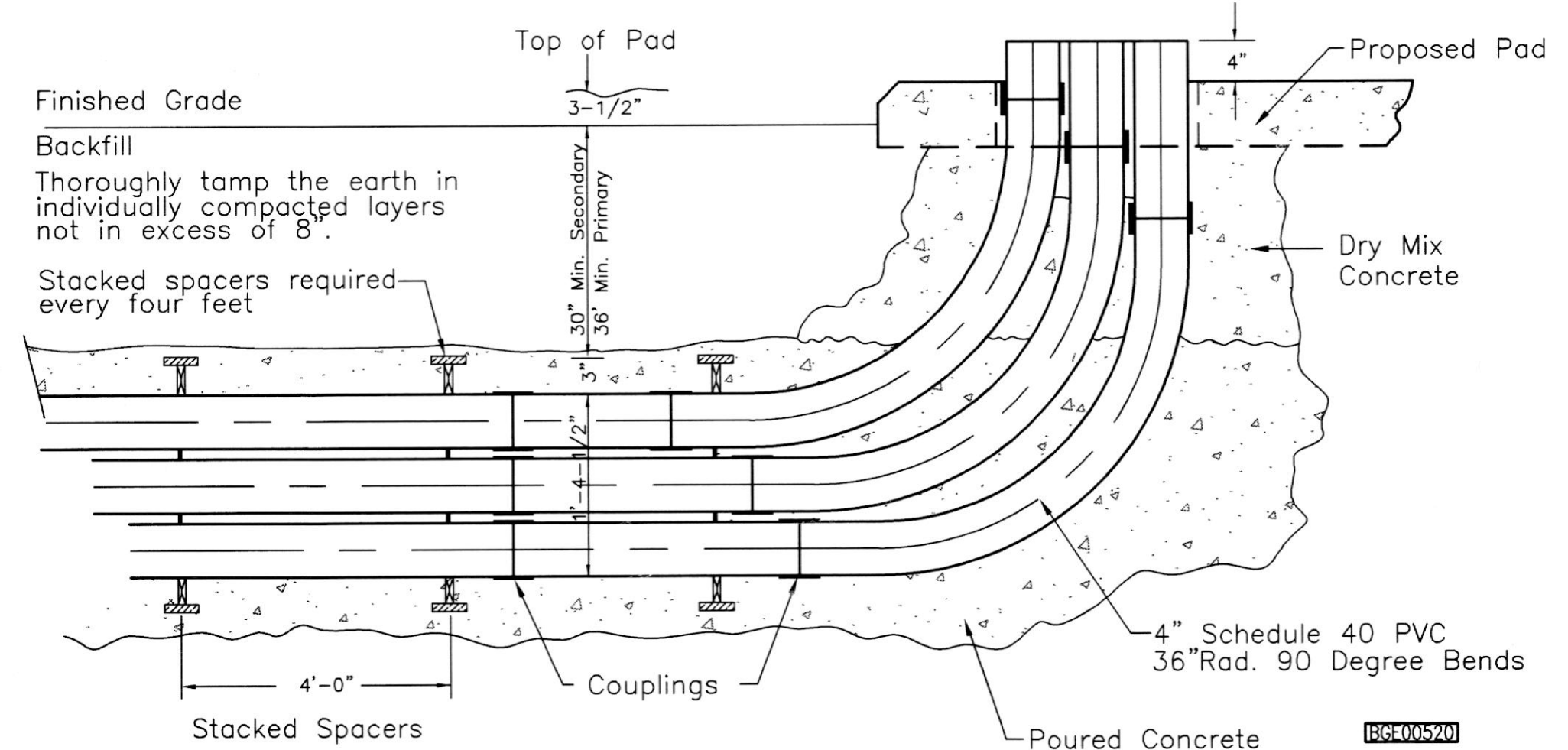
DETAIL - BGE PRECAST CONCRETE PAD

NO SCALE



DETAIL - POURED-IN-PLACE CONCRETE PAD

NO SCALE



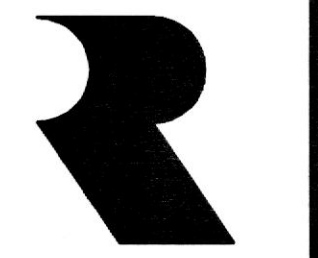
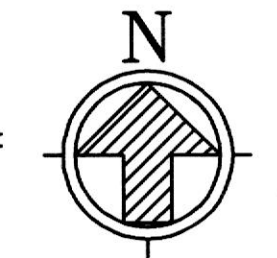
DETAIL - DUCTBANK TERMINATION AT TRANSFORMER & SWITCHBOARD

NO SCALE



SITE PLANS

SCALE: 1" = 20'-0"



RUBELING & ASSOCIATES, INC.
ARCHITECTURE
INTERIOR DESIGN
401 JEFFERSON AVENUE
TOWSON, MARYLAND 21286-5308
410-337-2888
FAX 410-337-2874



Century Engineering, Inc.
55 West Road
Towson, Maryland 21284
Voice (410) 823-8070
Fax (410) 823-2184

**SPORTS AND FITNESS CENTER
NOTRE DAME PREPARATORY SCHOOL**

815 HAMPTON LANE
TOWSON, MARYLAND 21286

95% SUBMISSION

REVISIONS:

NO.	DESCRIPTION	DATE

LAST REV.:

PROJECT NO.: 02-037

DATE: 2-19-03

SCALE: AS NOTED

TITLE:

SITE PLANS

SHEET:

E

100