

THIS PERMIT FOR INTERIOR FIT OUT ONLY.
THIS CODE SHEET SAME AS PREVIOUSLY REVIEWED FOR
SHELL PERMIT B361803/C-98

CODE REVIEW

A. CONSTRUCTION CLASSIFICATION: 2B PROTECTED NONCOMBUSTIBLE
The Building is protected by an automatic fire suppression system in compliance with NFPA. ALLOWABLE HEIGHT PER BOCA IS 3 STORIES OR 40 FEET. ACTUAL HEIGHT IS 34'-9". This building is a separate building from the main building.

B. USE GROUPS
ASSEMBLY USE
OVERALL GROSS BUILDING AREA 8868 SF.

C. ALLOWABLE AREA PER FLOOR - A USE
BASE ALLOWABLE 13,125 SF.
SPRINKLER INCREASE (200%) 26,250 SF.
PERIMETER ACCESS (50% - 25%) x 2 = 50% 6,562 SF.
TOTAL ALLOWABLE SF. PER FLOOR 45,937 SF.

C. PROPOSED AREA - A USE
LOWER LEVEL 4488 SF.
MAIN FLOOR 4200 SF.

E. OCCUPANT LOAD - SEE KEY PLANS (XX) FACTOR LOAD

SPACE	FACTOR	LOAD
LOWER LEVEL		
INSTRUCTION SPACES	20 NSF/PERSON	0
OFFICE / COFFEE ROOM	100 NSF/PERSON	20
CONFERENCE	1 NSF/PERSON	3.80
STORAGE/MECHANICAL	300 NSF/PERSON	-
TOTAL		383

MAIN FLOOR

SPACE	FACTOR	LOAD
INSTRUCTION SPACES	20 NSF/PERSON	103
OFFICE	100 NSF/PERSON	0
ASSEMBLY	100 NSF/PERSON	220
STORAGE	300 NSF/PERSON	1
TOTAL		324

- F. MEANS OF EGRESS**
- STAIR EGRESS CAPACITY: REQUIRED = 113 PEOPLE FROM FIRST FLOOR
x 0.2 = 34.6' TOTAL
PROVIDED = 2' x (16'1" 0.2" PER PERSON) = 160 PEOPLE
 - EGRESS DOOR CAPACITY: REQUIRED = 113 PEOPLE FROM FIRST FLOOR
x 0.15 = 26' TOTAL
PROVIDED = 2' x (36'1" 0.15" PER PERSON) = 480 PEOPLE
 - CORRIDORS SHALL BE 72" MIN WIDTH WITH 20'-0" MAX DEAD-END.
 - CORRIDOR WALLS MUST EXTEND TO DECK ABOVE. RESIST PASSAGE OF SMOKE.
 - CLASSROOM DOORS DO NOT HAVE CLOSERS.
 - * INDICATES DOORS WITH PANIC DEVICES OR NO LOCKS.

G. TWO HOUR FIRE RESISTANCE RATINGS
1. STAIRWAY ENCLOSURE

H. ONE HOUR FIRE RESISTANCE RATING
1. STORAGE ROOM ENCLOSURES

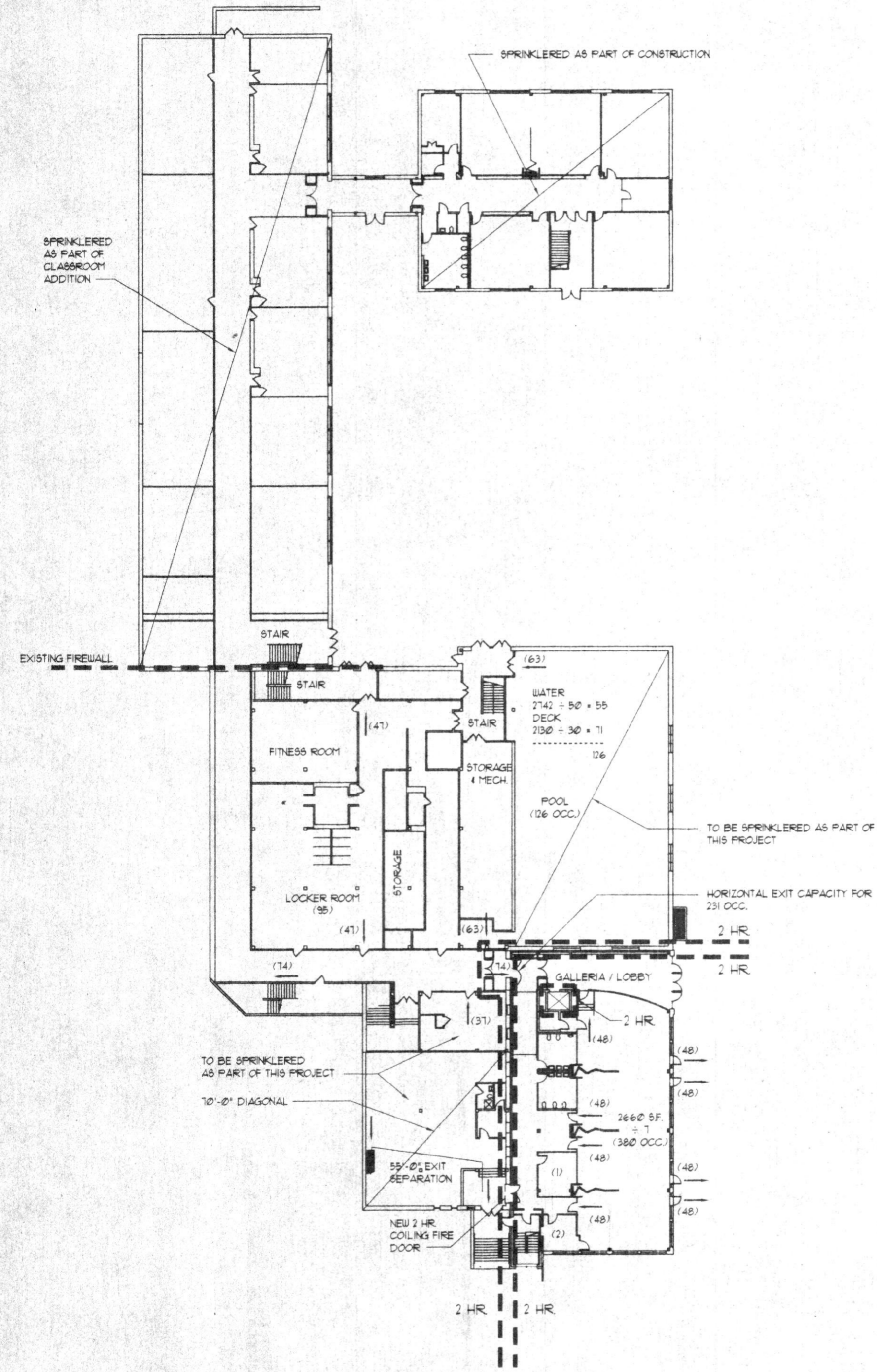
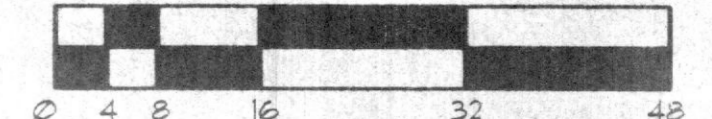
- I. ACCESSIBILITY**
- ALL TOILET ROOMS HAVE AT LEAST ONE ACCESSIBLE OF EACH TYPE FIXTURE
 - ALL SPACES ARE ON AN ACCESSIBLE ROUTE
 - RESCUE ASSISTANCE AREA NOT REQUIRED WITH SUPERVISED SPRINKLER SYSTEM.

FIREPROOFING NOTES

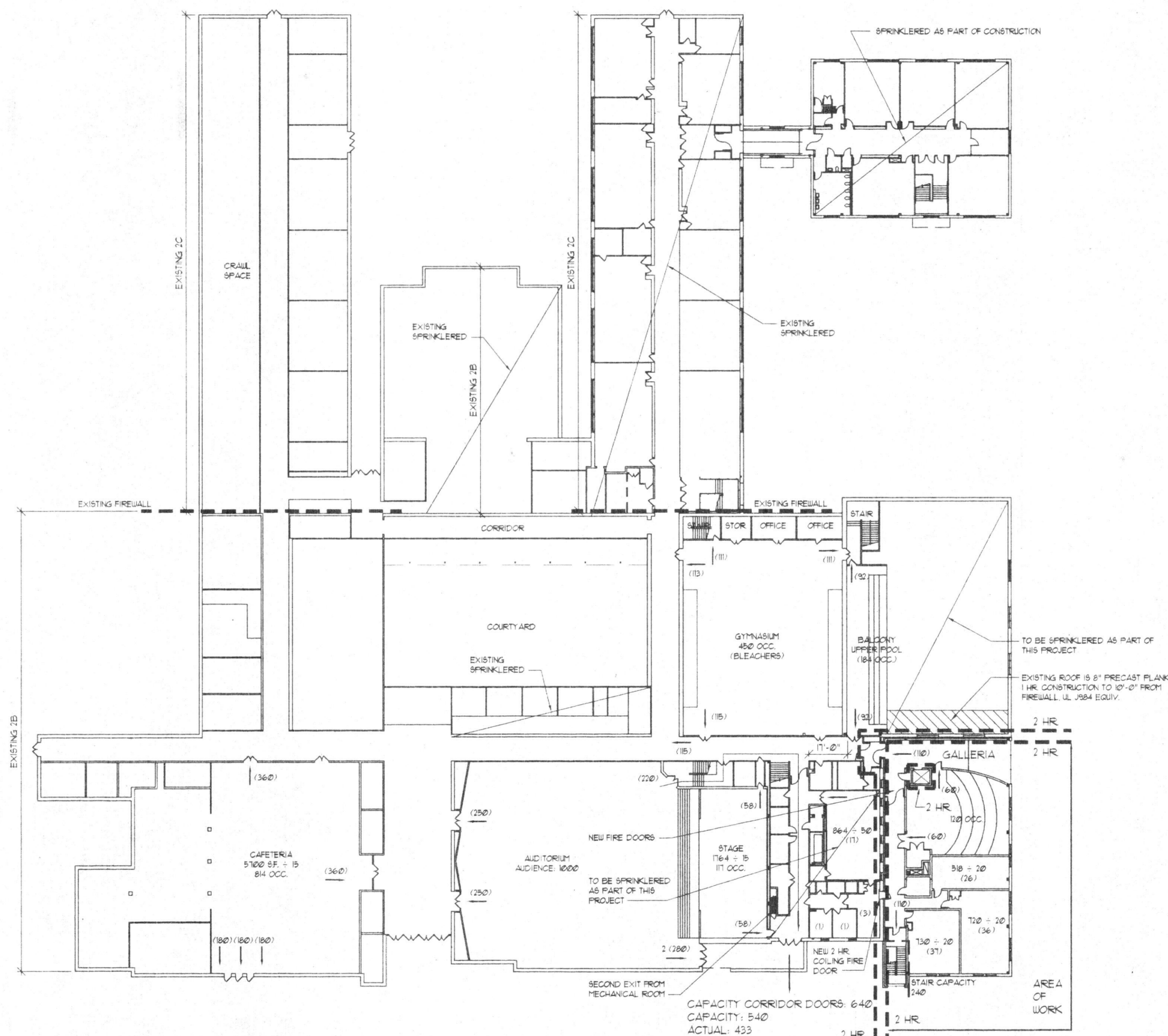
- STRUCTURAL STEEL FRAME IS UNRESTRAINED ASSEMBLY
- ALL STEEL COLUMNS AND BEAMS HAVE MINIMUM 1 HR. SPRAYED FIREPROOFING.
 - COLUMNS - UL* X112 - 3/4" THICK
 - BEAMS - UL* D302 - 1/16" THICK
 - COMPOSITE FLOOR SLAB HAS 1 HR. FIRE RATING D302.
 - METAL ROOF ASSEMBLY HAS 1 HR. FIRE PROOFING UL F132.
 - METAL DECK HAS 1 5/8" FIREPROOFING
 - ROOF BEAMS HAVE 3/8" FIREPROOFING
 - GALLERIA ROOF ASSEMBLY IS MORE THAN 15'-0" ABOVE FLOOR. METAL DECK AND CURVED ROOF TUBES DO NOT REQUIRE FIREPROOFING. COLUMNS SUPPORTING ROOF REQUIRE 1 HR. INTUMESCENT FIREPROOFING.
 - STRUCTURAL BEAMS AND COLUMNS SUPPORTING BEAMS THAT SUPPORT 2 HR. SHAFT CONSTRUCTION TO HAVE 2 HR. FIREPROOFING.
 - COLUMNS - UL* X112 - 1 3/8" THICK
 - BEAMS - UL* D302 - 1/16" THICK
 - RATINGS ABOVE BASED ON UL DIRECTORY.
 - THE UPPER GALLERIA WALL EXTENDS ABOVE THE EXISTING BUILDING. THE FIRE WALLS OF BOTH BUILDINGS IN TANDEM ARE IN COMPLIANCE WITH BOCA 10716.42. THE GLASS IN THE CLERESTORY WILL BE 1/4" WIRE GLASS, OUTSIDE FACE.

LEGEND

- FE. or FE.4 C. Provide Fire Extinguisher
- (XX) INDICATES OCCUPANT LOAD FOR EGRESS
- * INDICATES DOORS WITH PANIC DEVICES OR NO LOCKS
- INDICATES SEPARATED ASSEMBLY USE AREA
- 1 HR. FIRE SEPARATION REQUIRED
- TWO-HOUR FIRE SEPARATION REQUIRED
- ** UL 906 IS TWO HOUR 6" CMU CONSTRUCTION



11B LOWER LEVEL PLAN
1/2" = 1'-0"



11H MAIN LEVEL PLAN
1/2" = 1'-0"

- THE EXISTING SOUTH AND WEST WALLS AT THE AREA OF WORK ARE 1-5" THICK, 8" STONE AND 8" CMU WITH 1" AIR SPACE, EQUIVALENT TO UL 905 2 HR. EXISTING WINDOW OPENINGS IN THIS WALL WILL BE FILLED WITH 8" CMU.
- THE NEW WALL IS 6" CMU, UL 906.
- THE TWO BUILDINGS, NEW AND EXISTING EACH HAVE MINIMUM TWO HOUR FIRE WALLS AT THE INTERFACE.
- THE EXISTING BUILDING HAS AN OFFSET FIREWALL AT EACH LEVEL. THE FLOOR AND ROOF CONSTRUCTION AND SUPPORTING STEEL AT THE OFFSET WILL BE PROTECTED WITH TWO HOUR CONSTRUCTION PER BOCA 10719.



I certify that these documents were prepared or approved by me, and that I am a duly licensed architect under the laws of the State of Maryland. License number 5213-4. Expiration date: 12/31/00.

PERFORMING ARTS AND CLASSROOM ADDITIONS
NOTRE DAME PREPARATORY SCHOOL
 TOWSON, MARYLAND

REVISIONS:

NO.	DESCRIPTION	DATE
1	PERMIT	NOV 01 1998

LAST REV: PROJECT NO.: 98-029 DATE: FEB. 16, 1999 SCALE: AS NOTED

TITLE: PERFORMING ARTS ADDITION CODE REVIEW

SHEET: I

