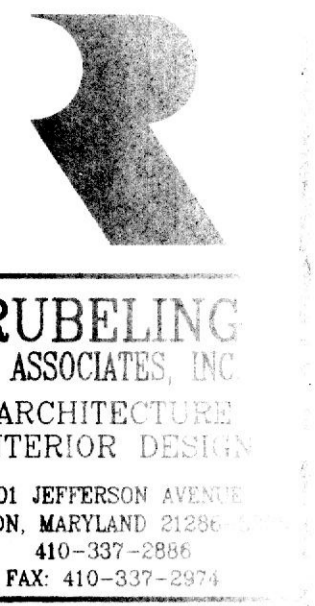
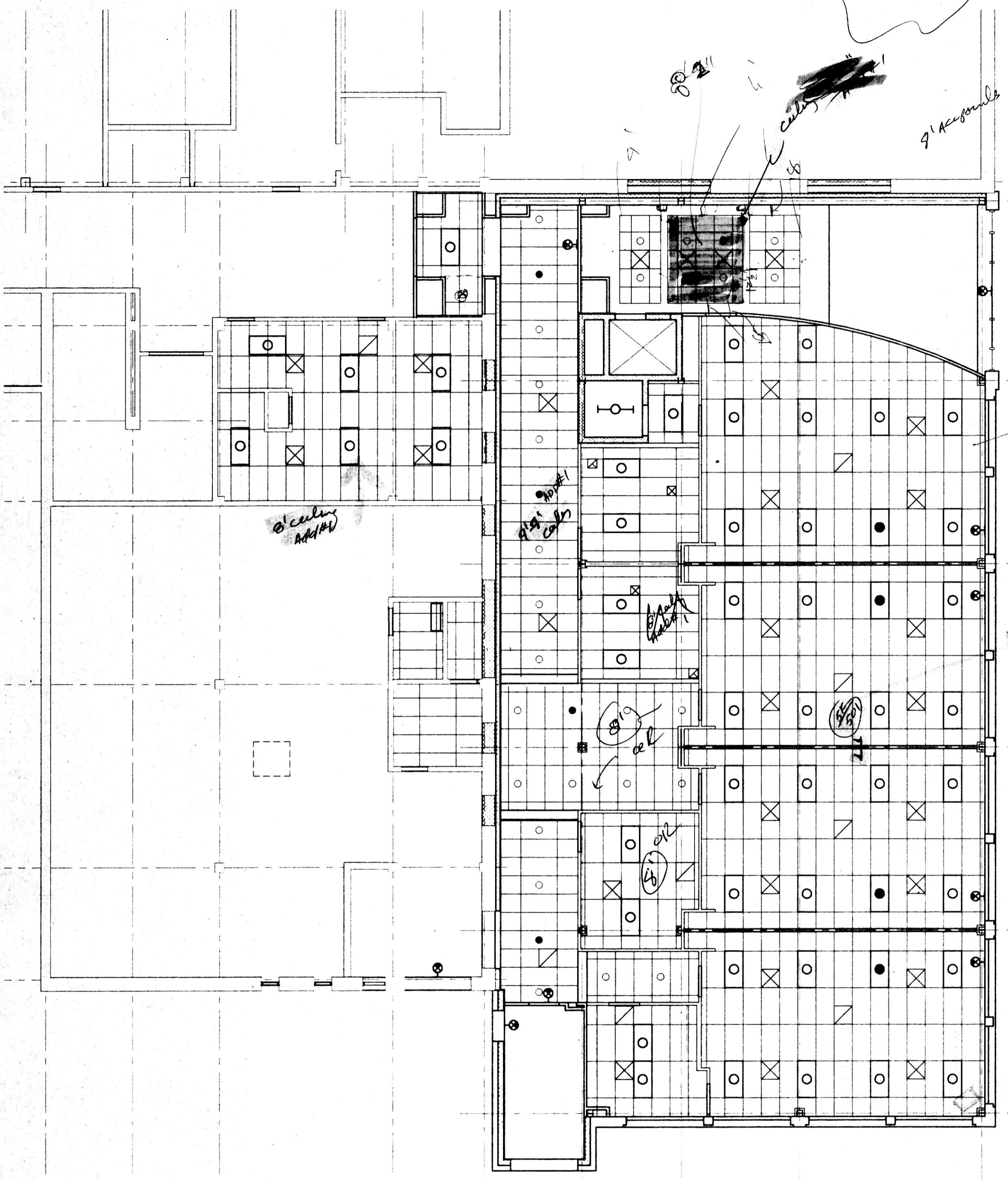


A B C D E F G H J K L M N P Q R S T U

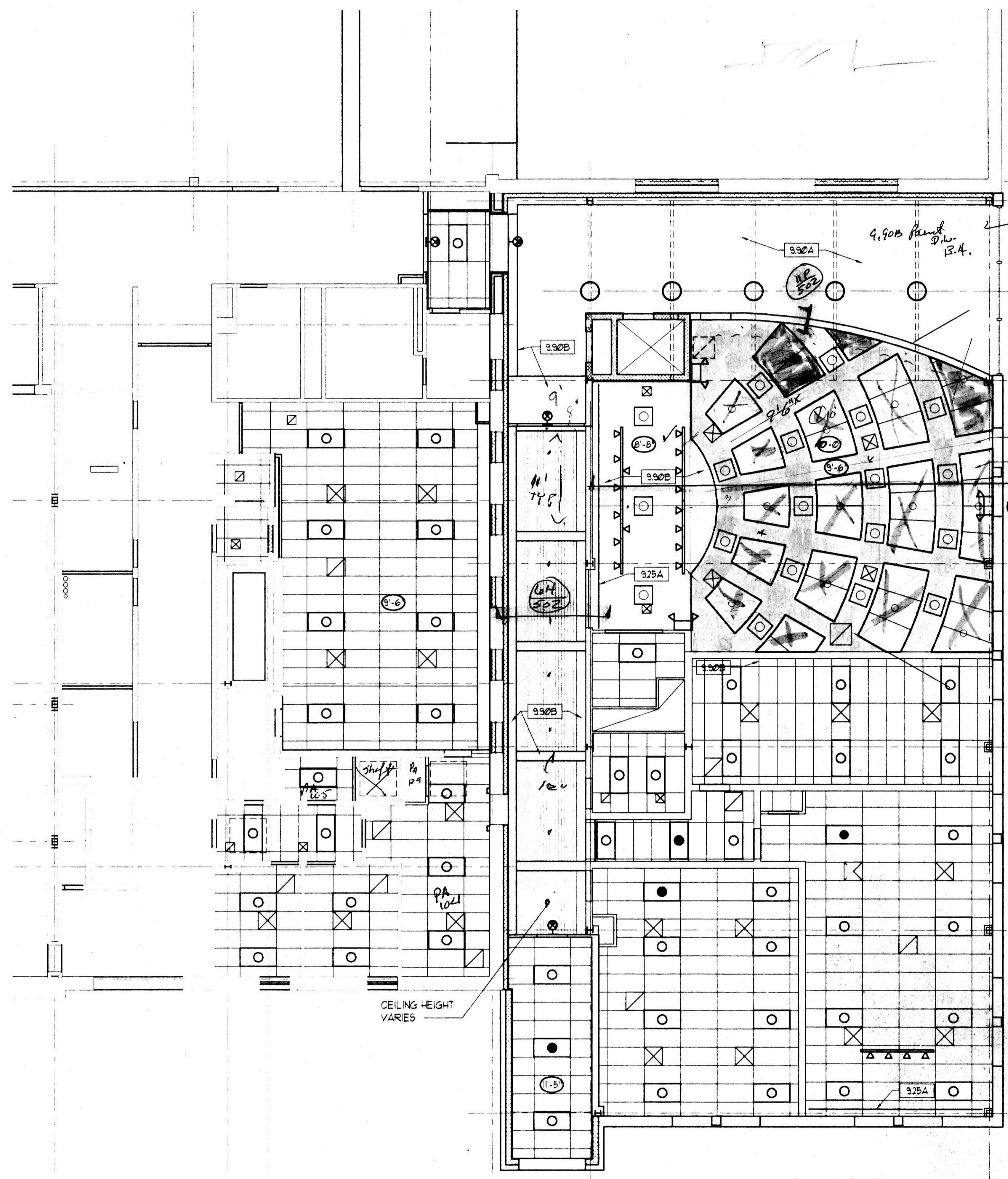


RUBELING & ASSOCIATES, INC.
ARCHITECTURE
INTERIOR DESIGN
401 JEFFERSON AVENUE
TOWSON, MARYLAND 21286
410-337-2866
FAX: 410-337-2371

I certify that these documents were prepared or approved by me, and that I am a duly licensed architect under the laws of the State of Maryland.
License number: 5123-0
Expiration date: May 12, 2003



12A LOWER LEVEL
REFLECTED CEILING PLAN
1/8" = 1'-0"



12K MAIN LEVEL
REFLECTED CEILING PLAN
1/8" = 1'-0"

PERFORMING ARTS AND CLASSROOM ADDITIONS
NOTRE DAME PREPARATORY SCHOOL
TOWSON, MARYLAND

REVISIONS:		
NO.	DESCRIPTION	DATE

LAST REV.:
PROJECT NO.: 98-033
DATE: FEB. 16, 1999
SCALE: 1/8" = 1'-0"
TITLE:
**PERFORMING ARTS ADDITION
REFLECTED
CEILING
PLANS**
SHEET:
I

GENERAL NOTES	DRAWING NOTES	LEGEND
1. UNLESS NOTED OTHERWISE, ALL CEILINGS ARE 9'-0" AFF. CEILING HEIGHTS AS INDICATED (C-2).	9.35A POCKET FOR CYCLORAMA CURTAIN	2x4 FLUORESCENT LIGHT
2. REFER TO ELECTRICAL DRAWINGS FOR QUANTITIES OF LIGHT FIXTURES AND LOCATION OF EMERGENCY LIGHTS/DEVICES. THIS DRAWING SHOWS LOCATION OF ALL OTHER LIGHT FIXTURES.	9.30B FABRIC WRAPPED ACOUSTIC PANEL	1x4 FLUORESCENT LIGHT
3. ALL WALLS SHOWN EXTEND TO THE STRUCTURAL DECK UNO. SEALING ALL WALLS TO DECK.	9.30A ACOUSTICAL METAL CEILING, PAINTED	2x2 RETURN AIR
4. REFER TO MECHANICAL, ELECTRICAL, AND PLUMBING DRAWINGS FOR ITEMS NOT SHOWN ON CEILING PLAN. GRILLES, SPEAKERS, HEAT & SMOKE DETECTORS, SHALL BE CENTERED IN TILES UNLESS NOTED OTHERWISE.	9.30B PAINTED G.I.B.	2x2 SUPPLY DIFFUSER
5. ALL BULKHEAD DIMENSIONS ARE FROM FINISH FACE OF WALL OR BULKHEAD TO FINISH FACE OF BULKHEAD. CAULK INTERSECTION OF GYPSUM BULKHEADS & MASONRY CONSTRUCTION.		EXHAUST GRILL
		WALL-MOUNTED FLUORESCENT LIGHT
		CEILING-MOUNTED STRIP FLUORESCENT LIGHT
		COMPACT FLUORESCENT DOWN LIGHT
		HORIZONTAL LV
		PERIMETER LIGHT FIXTURE
		2x4 SUSPENDED GRID
		EMERGENCY LIGHTS
		WALL-MOUNTED EXIT SIGN
		LINEAR METAL CEILING