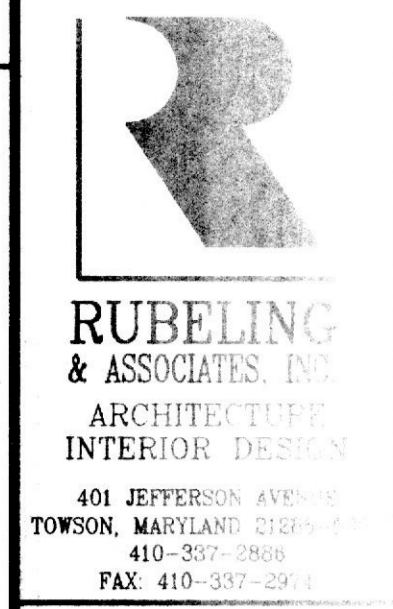


A B C D E F G H J K L M N P Q R S T U

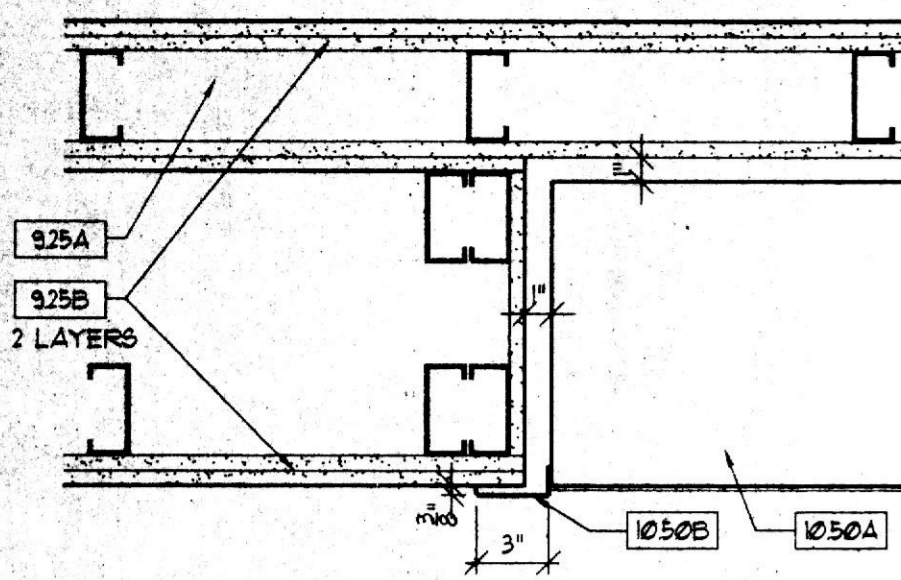
DRAWING NOTES

- 220A EXIST. CONST.
- 581A STAGGERED TREAD STAIR EXP. JT.
- 581A 1/8" PLATE
- 582B CONTINUOUS FURRING
- 610A 3/4" FT. PLYWOOD
- 620C 2x6 FT. WOOD SLEEPER # 12" O.C.
- 620A 5/4" MAPLE TONGUE & GROOVE FLOORING
- 620B 1" MAPLE RISER
- 721A FIRE SAFING
- 721A ROOF HATCH W/ HANDRAIL
- 925A 3 5/8" 25 GA METAL STUDS
- 925B 5/8" GUB
- 925C STRUCTURAL STUD
- 925D SHAFTHALL CONSTRUCTION SEE PARTITION TYPES
- 925E 5/8" GUB W/ 1 LAYER FABRIC COVERED TACKBOARD
- 925F 1/2" FABRIC WRAPPED COVERED ACOUSTIC PANEL
- 925G 1/2" NEOPRENE PAD
- 925H SOUND BATT
- 934A LINEAR METAL CEILING & SUSPENSION SYSTEM
- 934B VINYL COVE BASE
- 934C CARPETING
- 1010A TACKSTRIP TOP @ 8'-4" AFF. CHALKBOARD 4'-0" X 8'-0", TOP @ 7'-4" AFF. UNO.
- 1010B MARKERBOARD, TOP @ 7'-4" AFF. RECESSED DISPLAY CASE
- 1010C 12" X 12" X 60" METAL LOCKERS ON 4" CONC. CURB, PROVIDE FILLER PANELS AT ENDS AS NEEDED
- 1050A METAL LOCKERS
- 1050B METAL TRIM (HEAD SIMILAR)
- 1050C RECESSED FIRE EXTINGUISHER CABINET
- 1050D 5/8" FLAT TRIM (FULLY RECESSED)
- 1065A MARKERBOARD 4'-0" X 4'-0" AS PART OF OPERABLE PANEL PARTITION
- 1065B OPERABLE PARTITION
- 1066A CYCLORAMA TRACK & CURTAIN
- 1145A ALTERNATING TREAD DEVICE
- 1251A MINI-BLINDS
- 1300A T.V. BRACKET
- 1400A DUCTWORK - SEE MECH.
- 1500A WATER COOLER - SEE MECH.
- 1500B PLUMBING FIXTURE - SEE MECH.
- 1500C PIPING - SEE MECH.
- 1600A ELECTRIC PANELS
- 1600B COVE LIGHT - SEE ELEC. DWGS.
- 1600C LOW VOLTAGE TRACK LIGHT

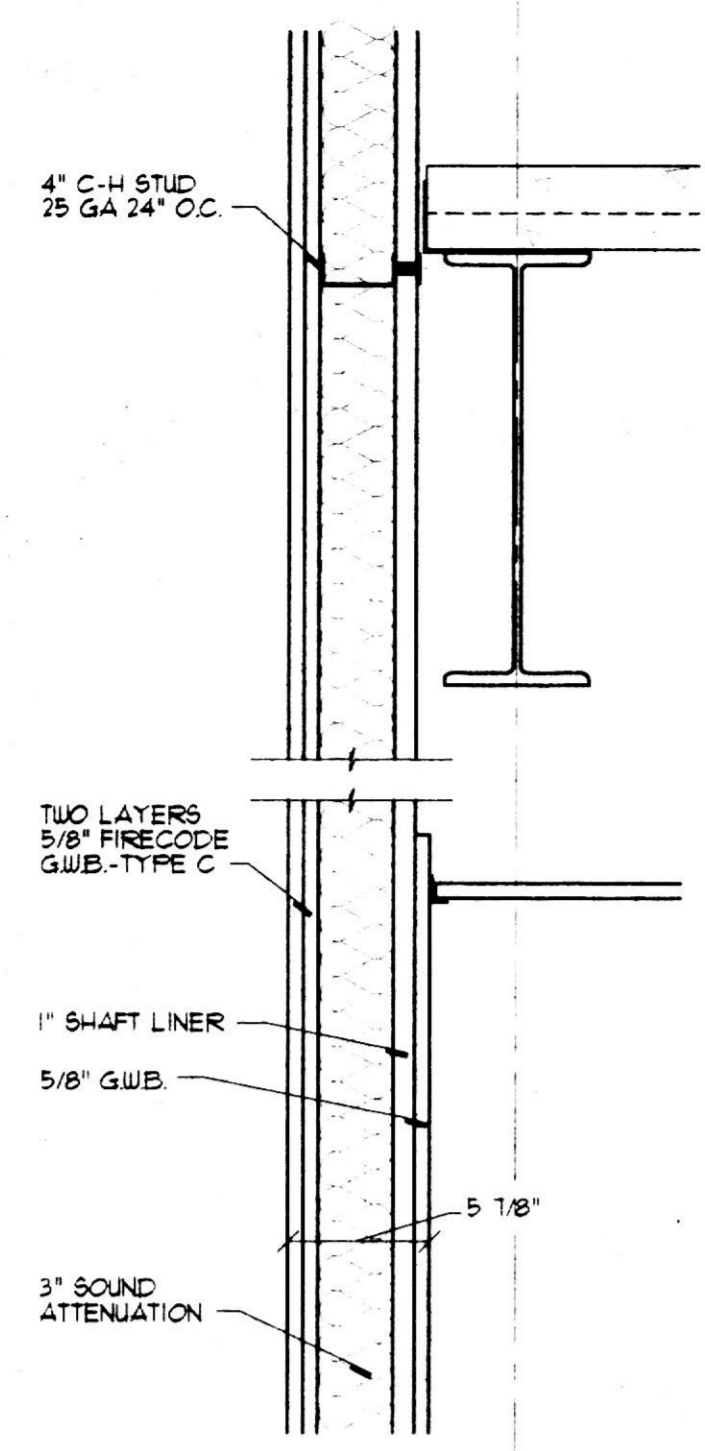


401 JEFFERSON AVENUE
TOWSON, MARYLAND, 21286
410-351-1800
FAX 410-351-2010

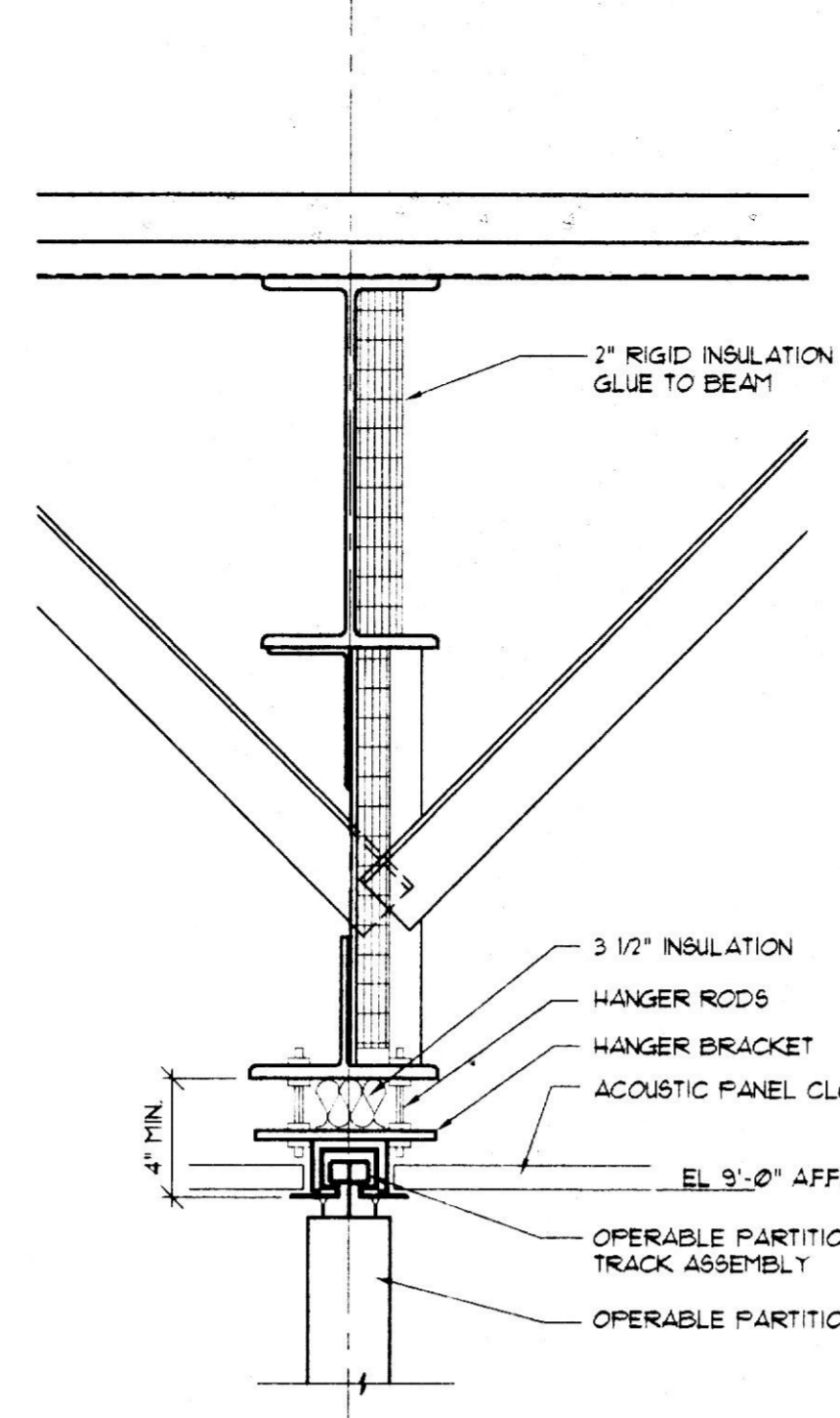
PERFORMING ARTS AND CLASSROOM ADDITIONS
NOTRE DAME PREPARATORY SCHOOL
TOWSON, MARYLAND



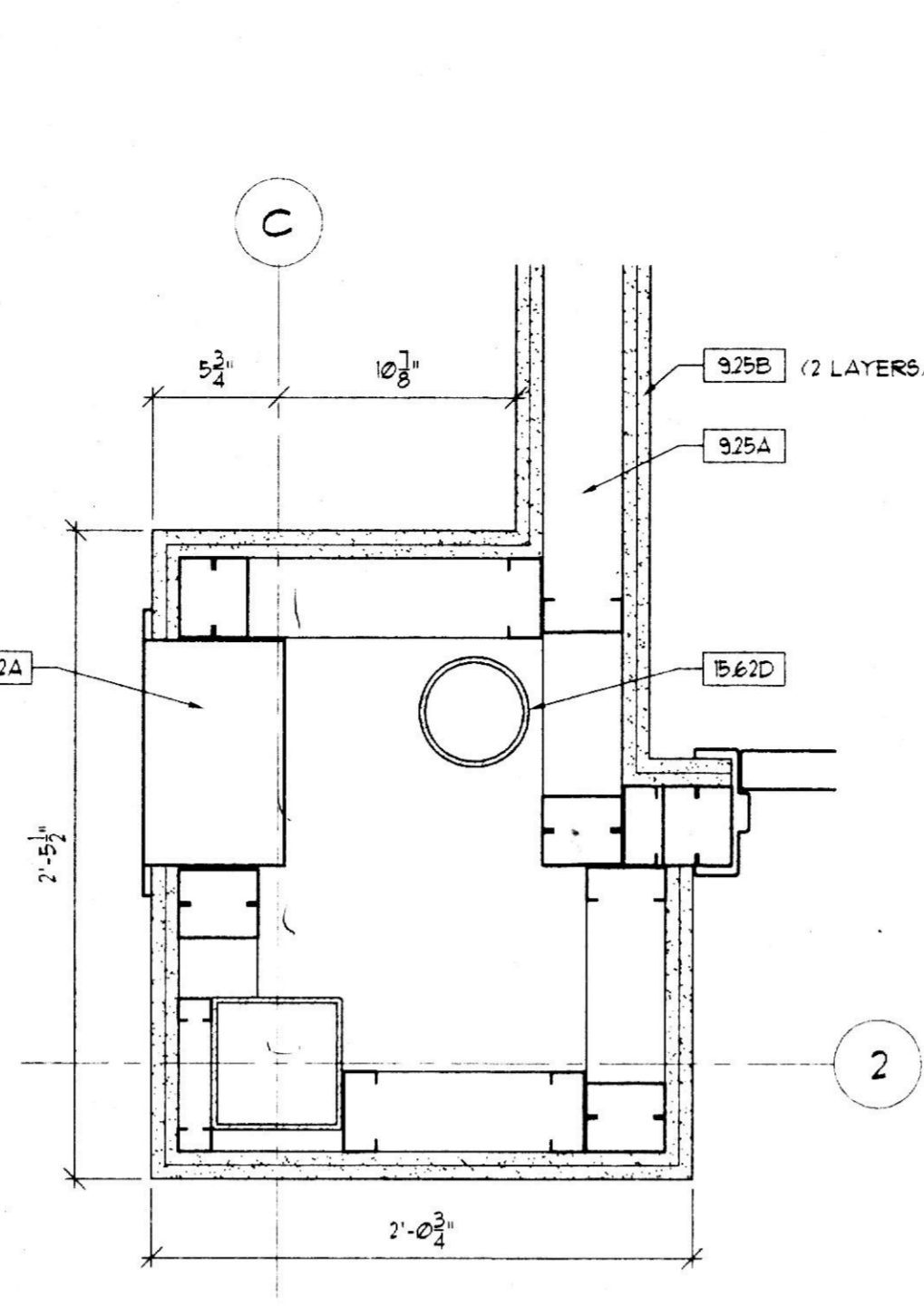
3A LOCKER TRIM DETAIL
1/2" = 1'-0"



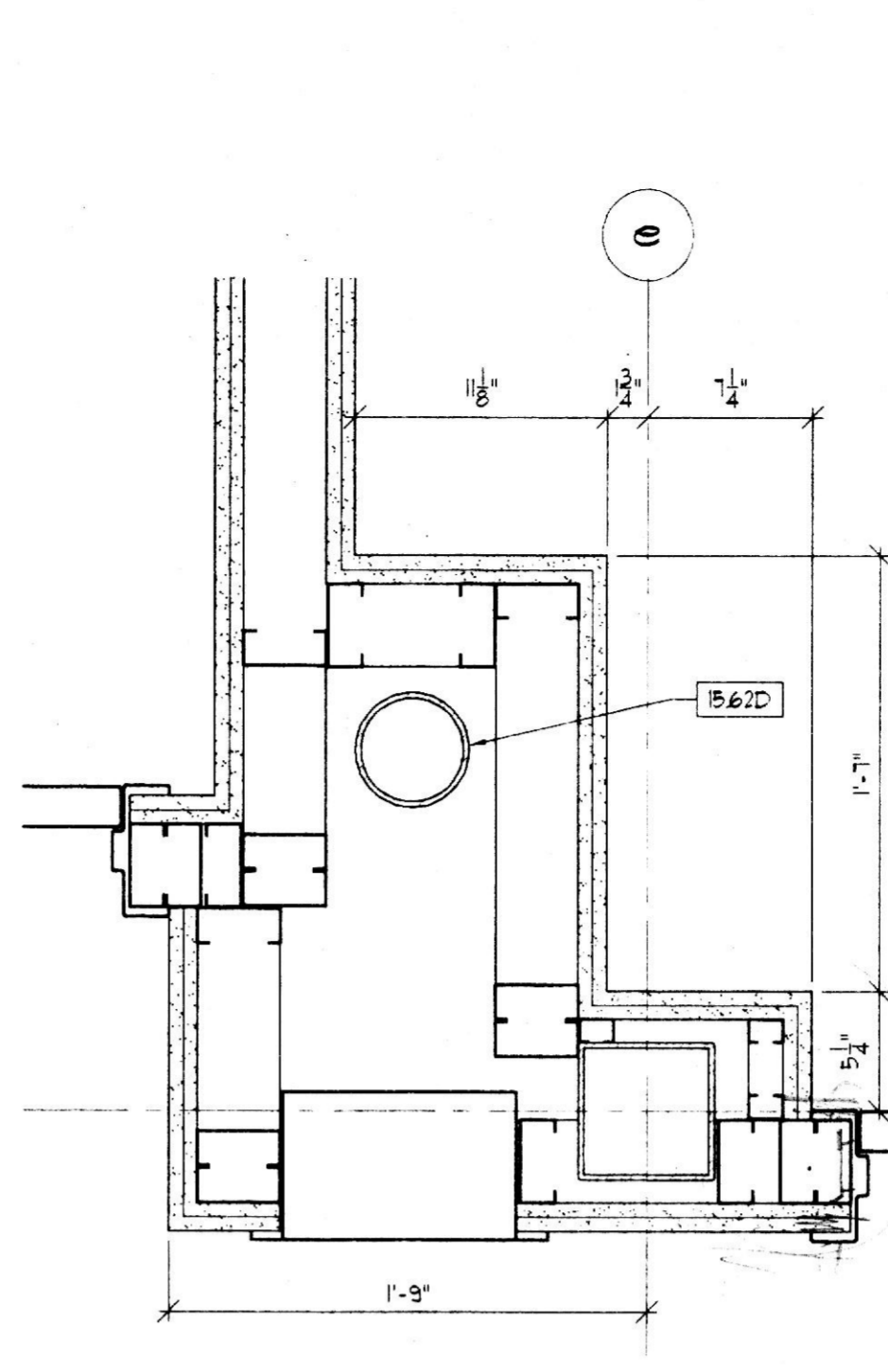
5D WALL SECTION AT STAIR
1/2" = 1'-0"



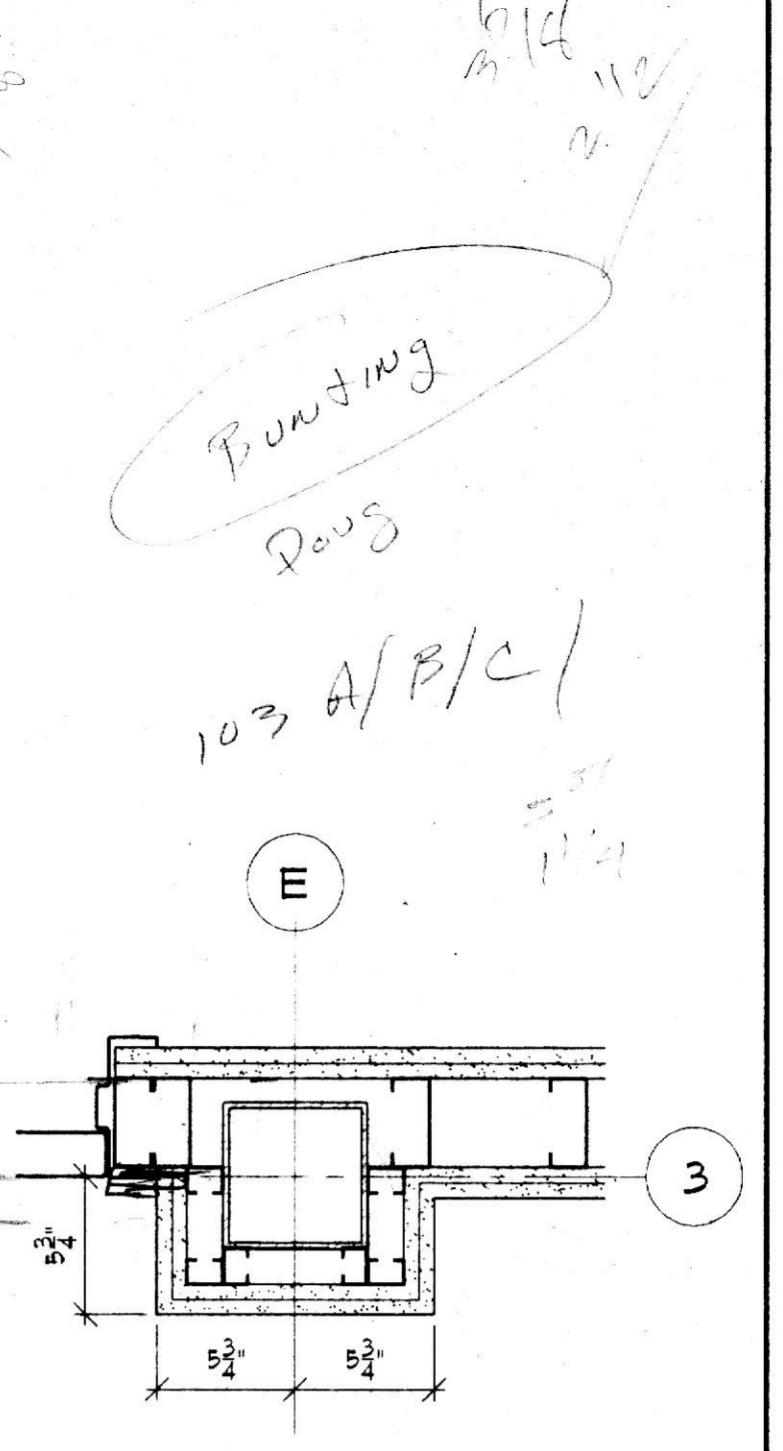
5F PERFORMING ARTS
OPERABLE PARTITION DETAIL
1/2" = 1'-0"



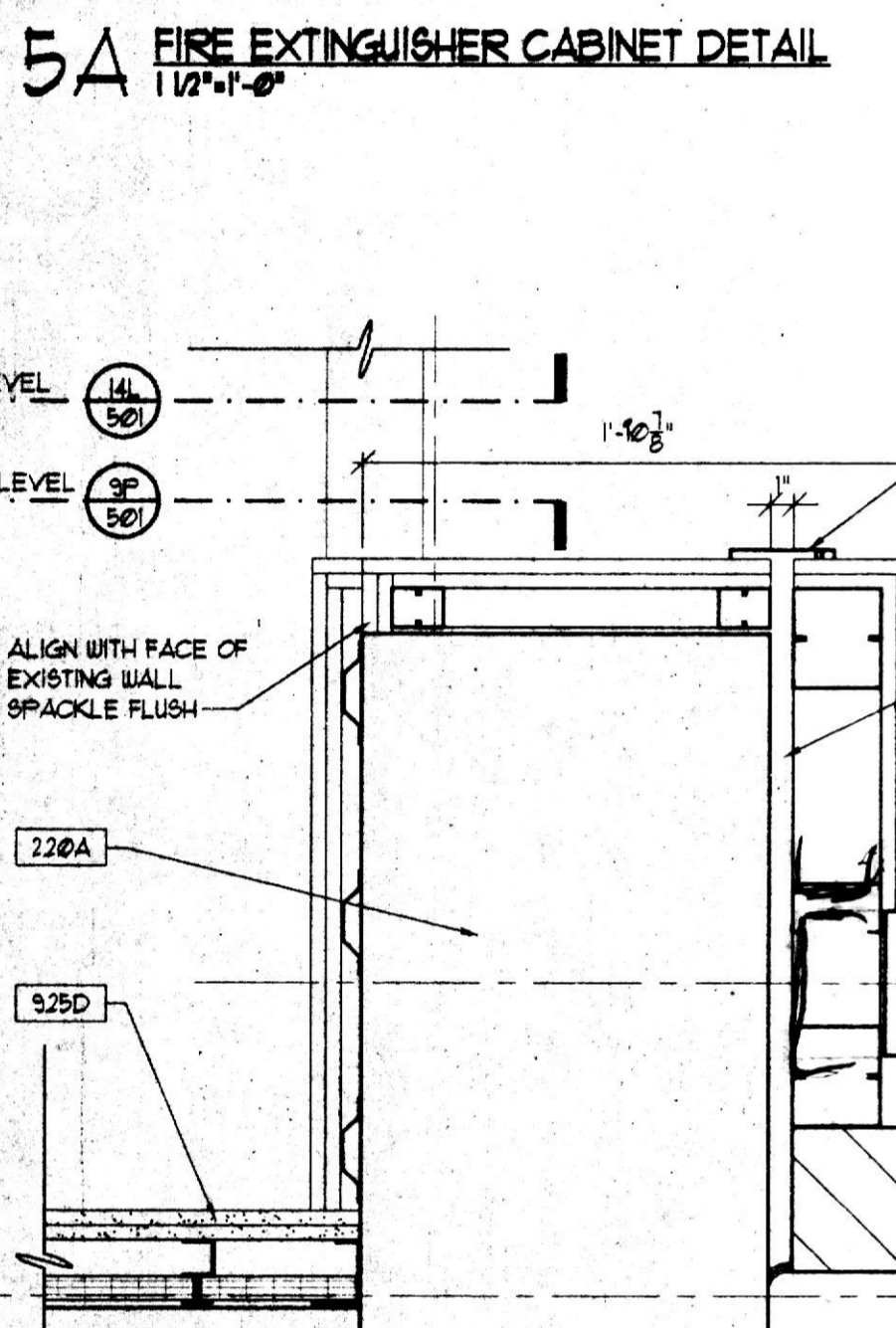
5J DETAIL AT COLUMN ENCLOSURE
1/2" = 1'-0"



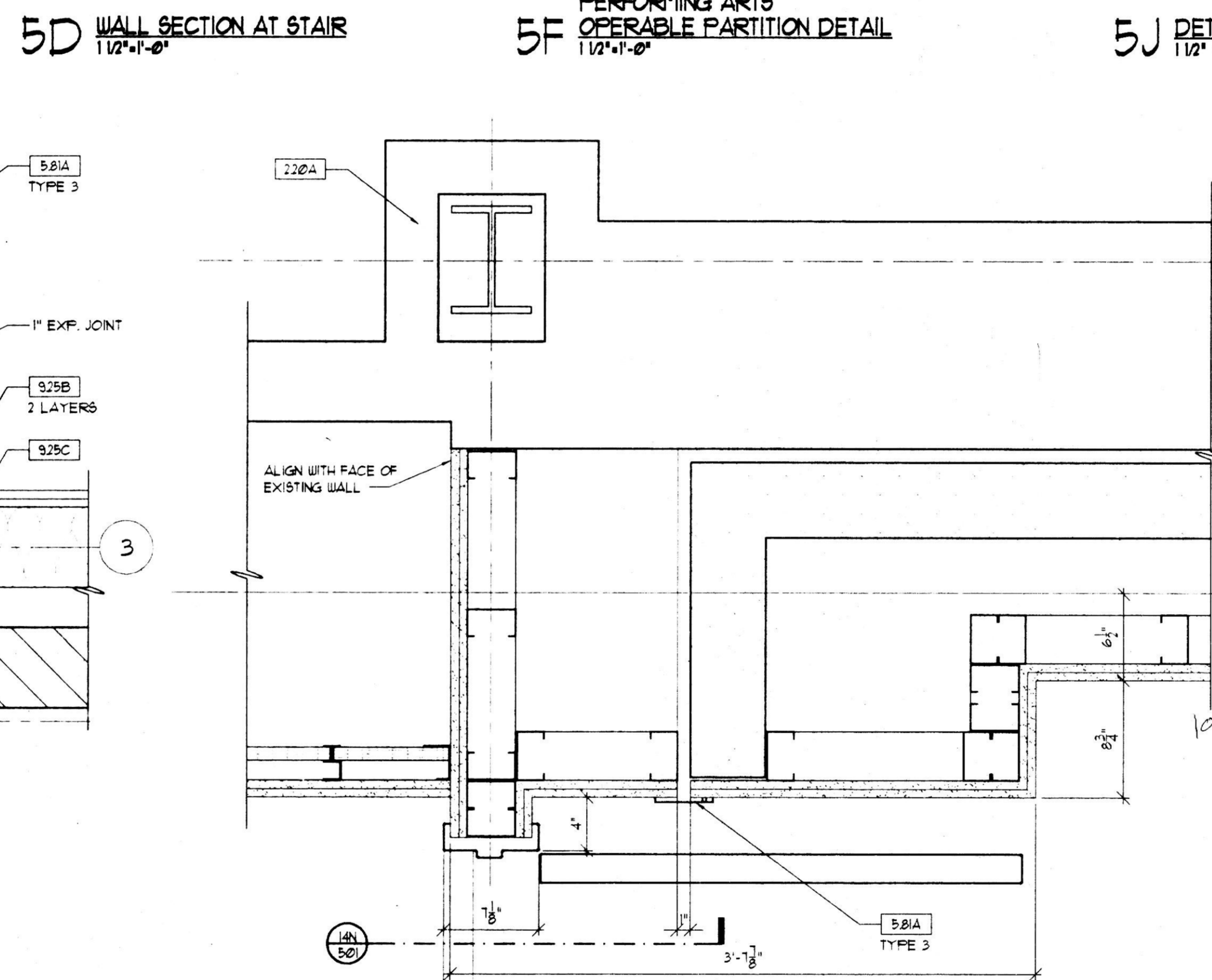
5M DETAIL AT COLUMN ENCLOSURE
1/2" = 1'-0"



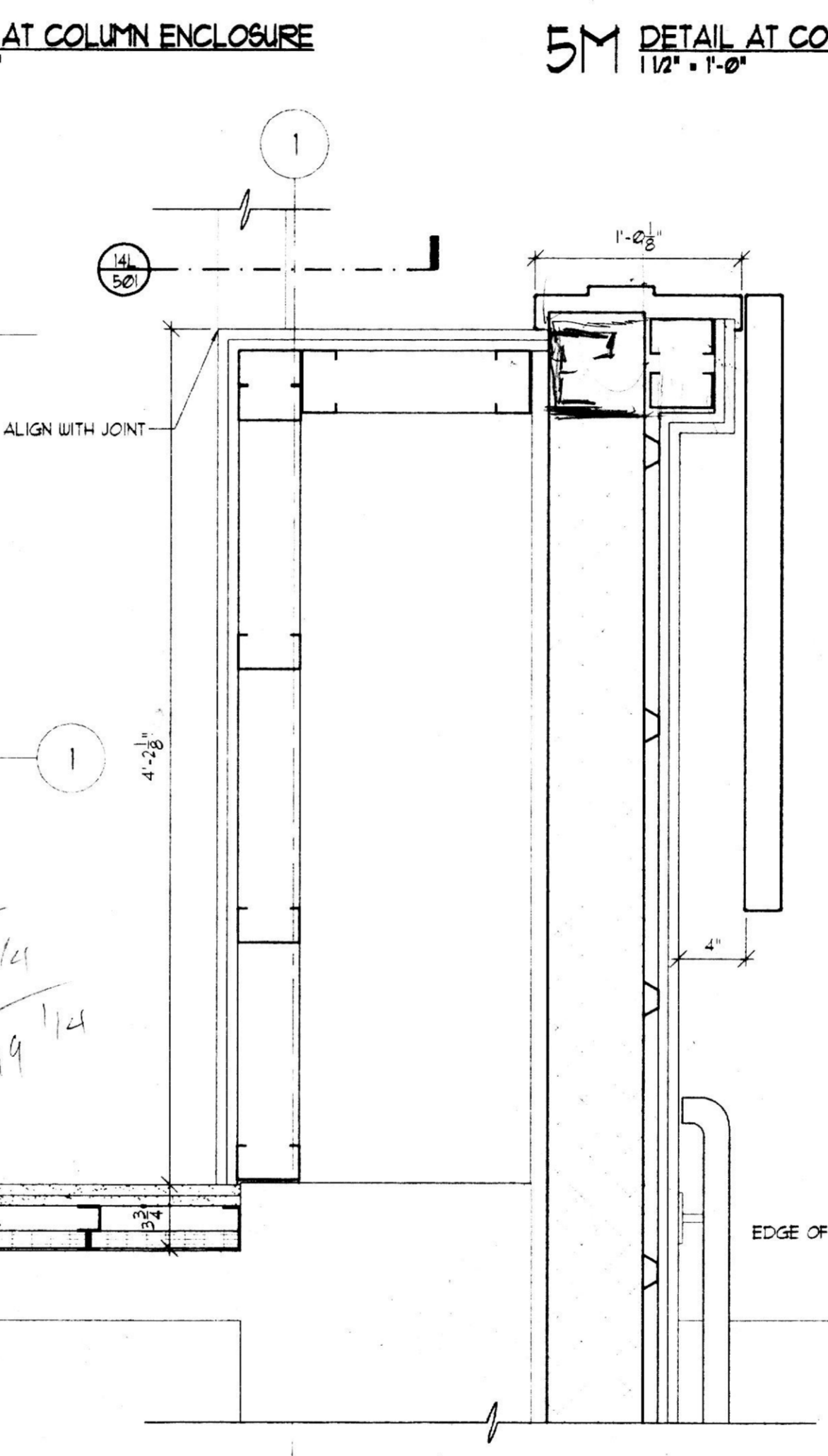
5Q DETAIL AT COLUMN E-3
1/2" = 1'-0"



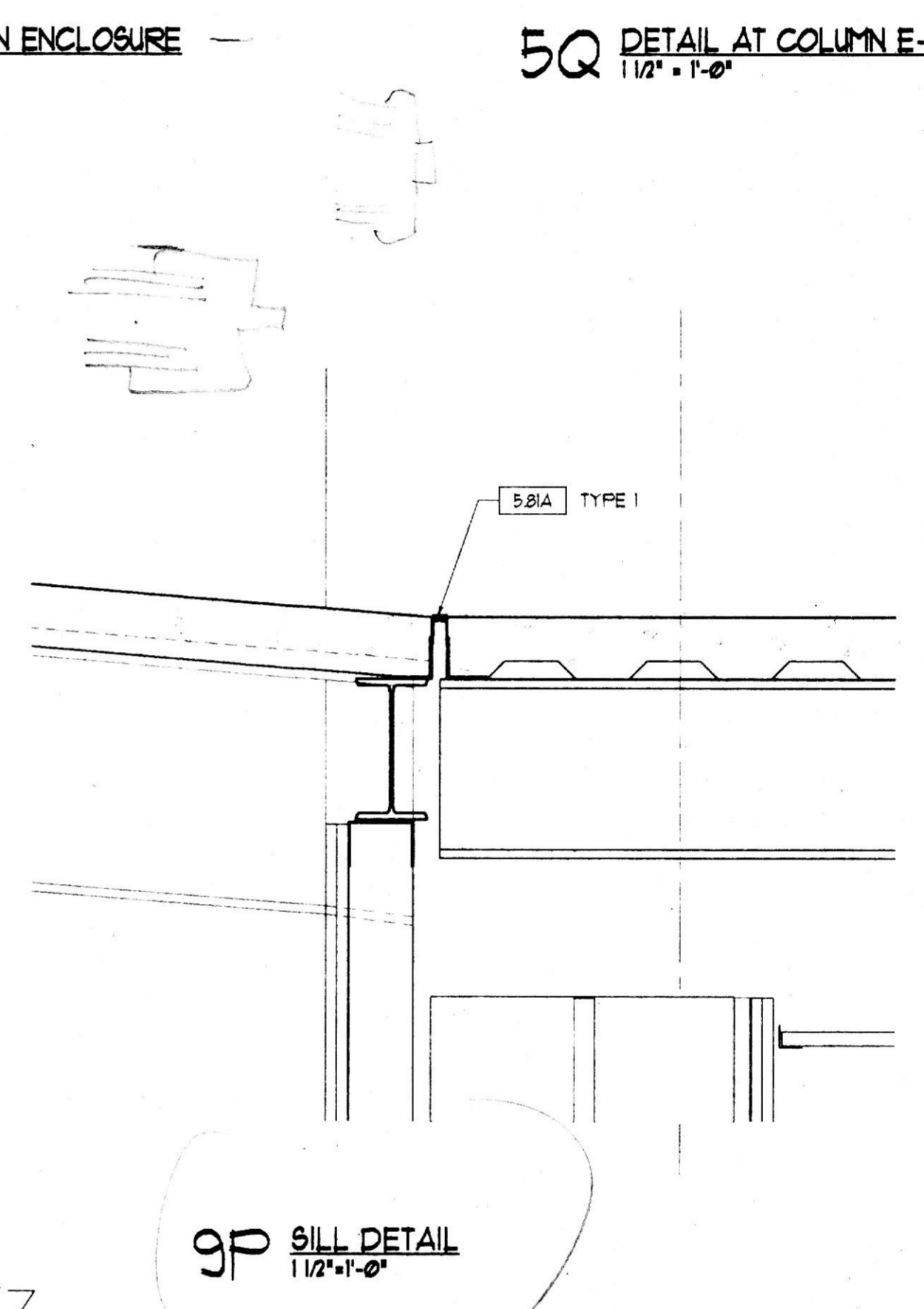
5A FIRE EXTINGUISHER CABINET DETAIL
1/2" = 1'-0"



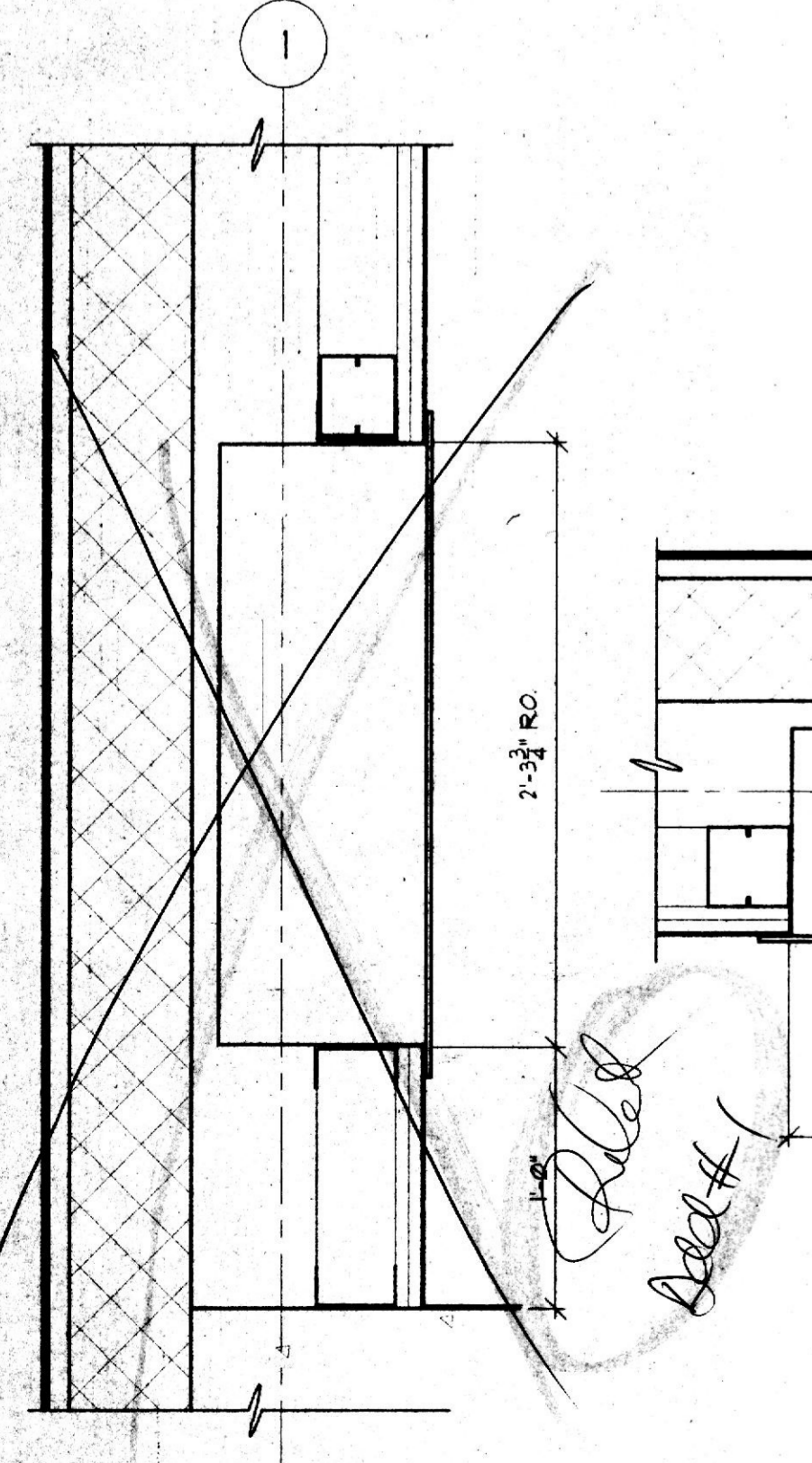
9F DETAIL AT CORRIDOR
1/2" = 1'-0"



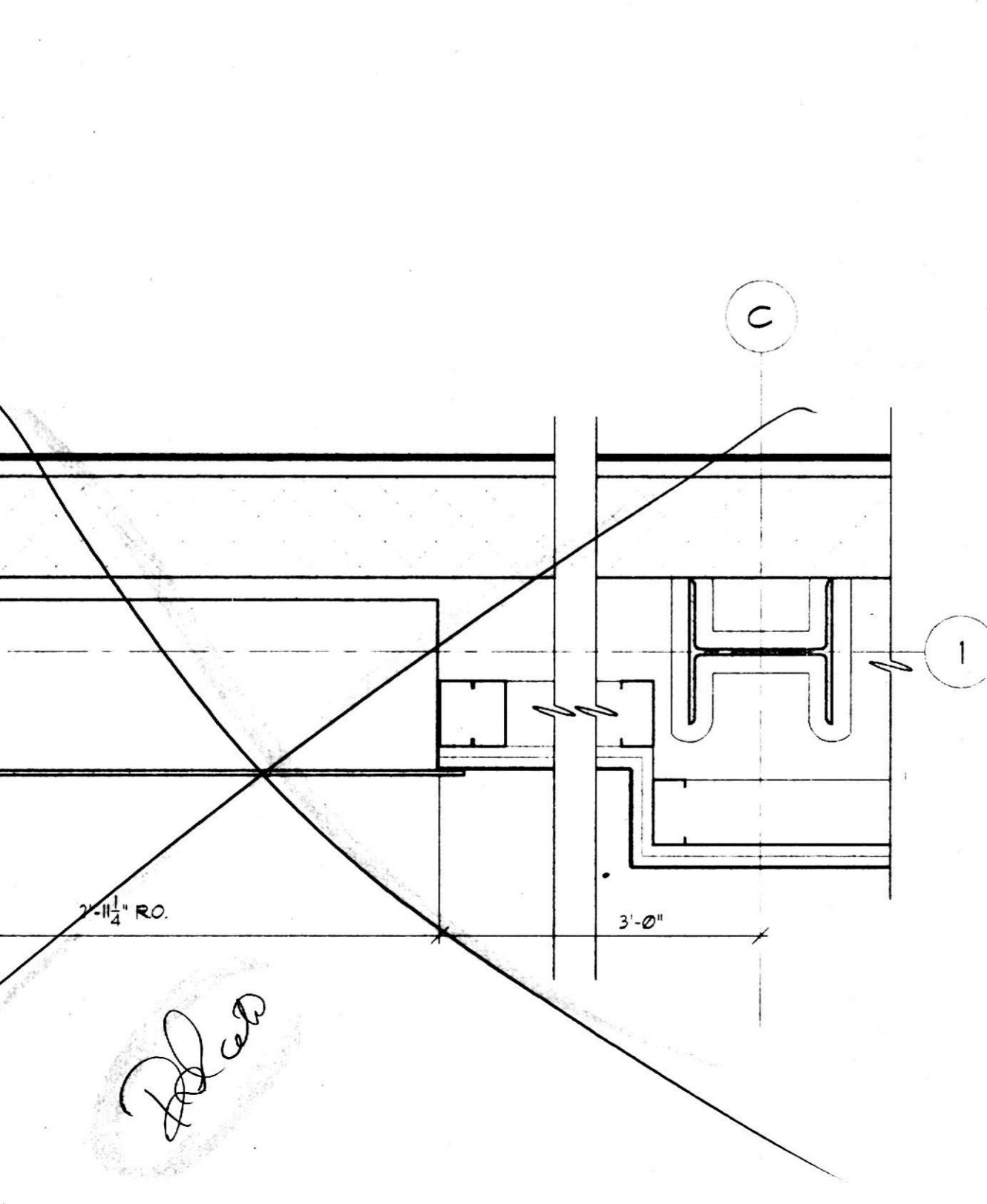
10M DETAIL AT CORRIDOR
1/2" = 1'-0"



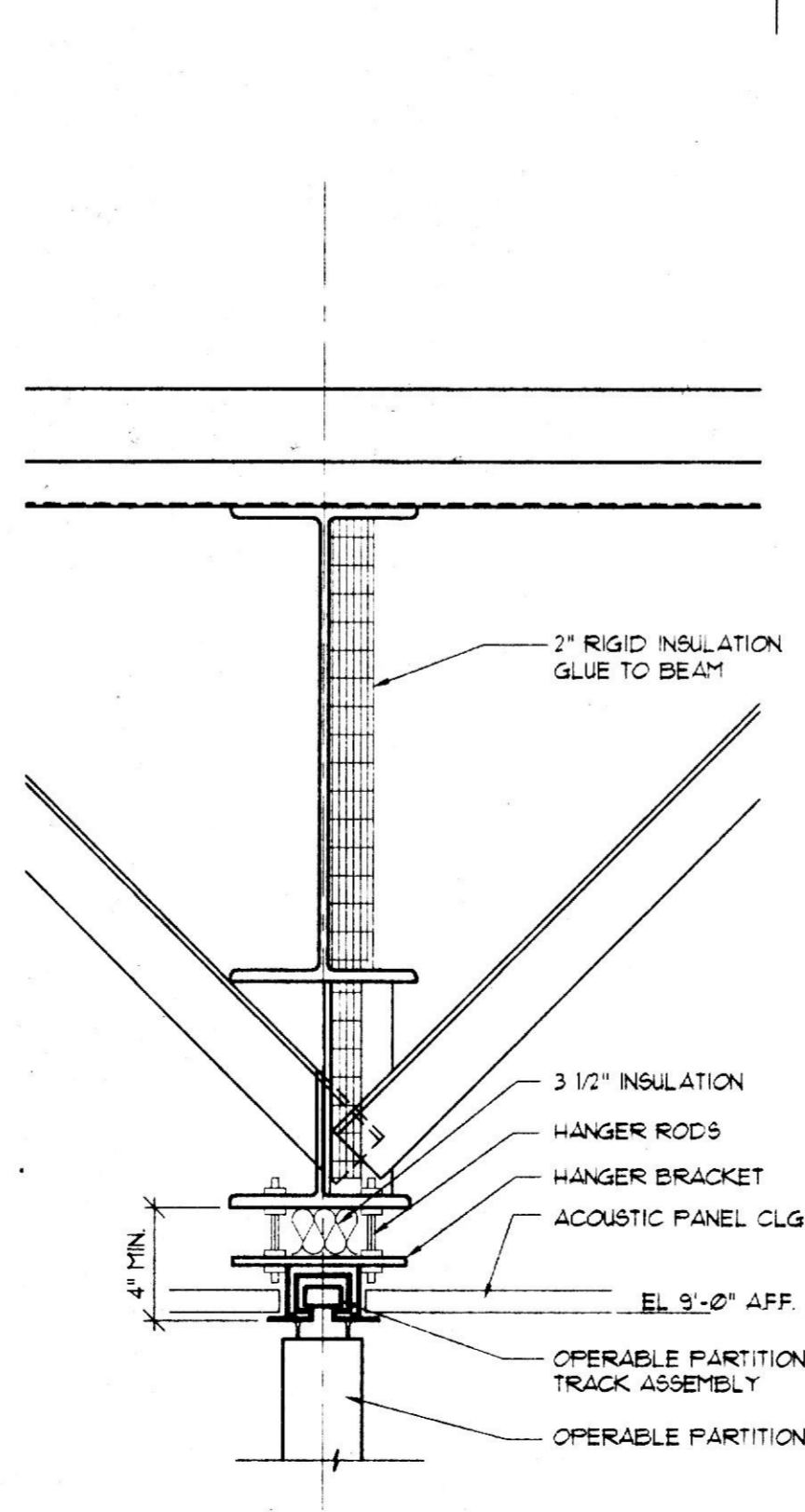
9P SILL DETAIL
1/2" = 1'-0"



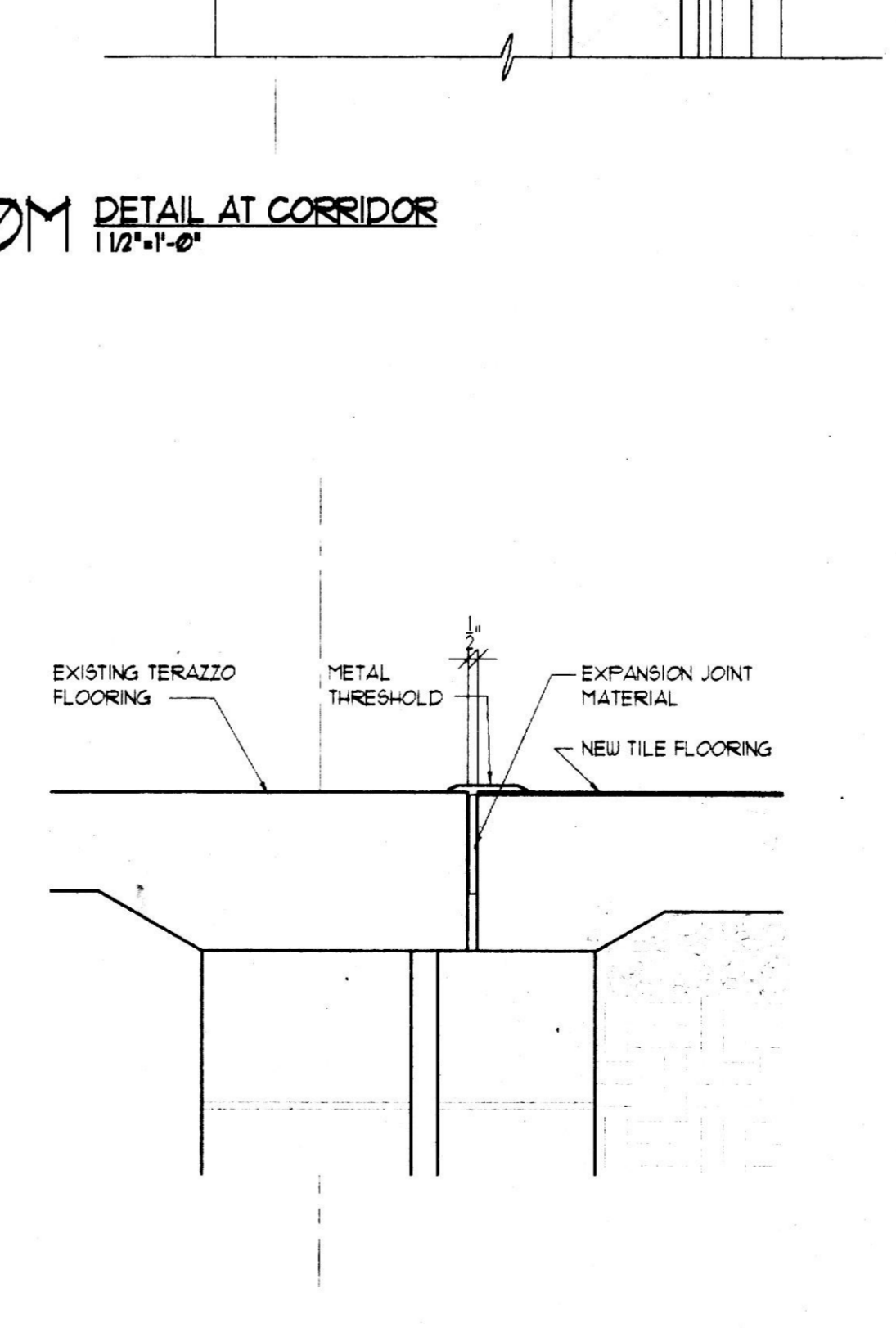
14A WALL SECTION AT UNIT HEATER
1/2" = 1'-0"



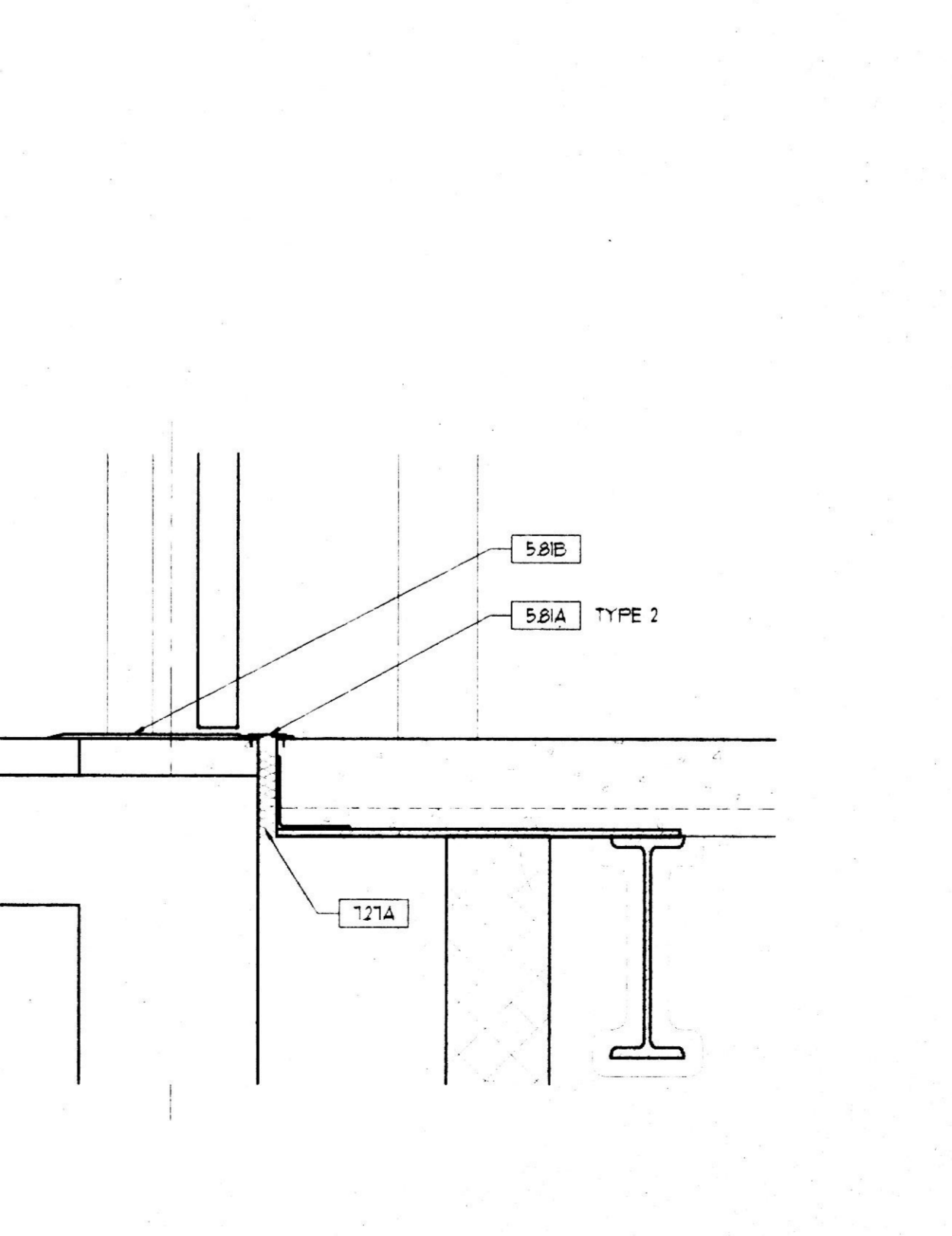
14C UNIT HEATER DETAIL
1/2" = 1'-0"



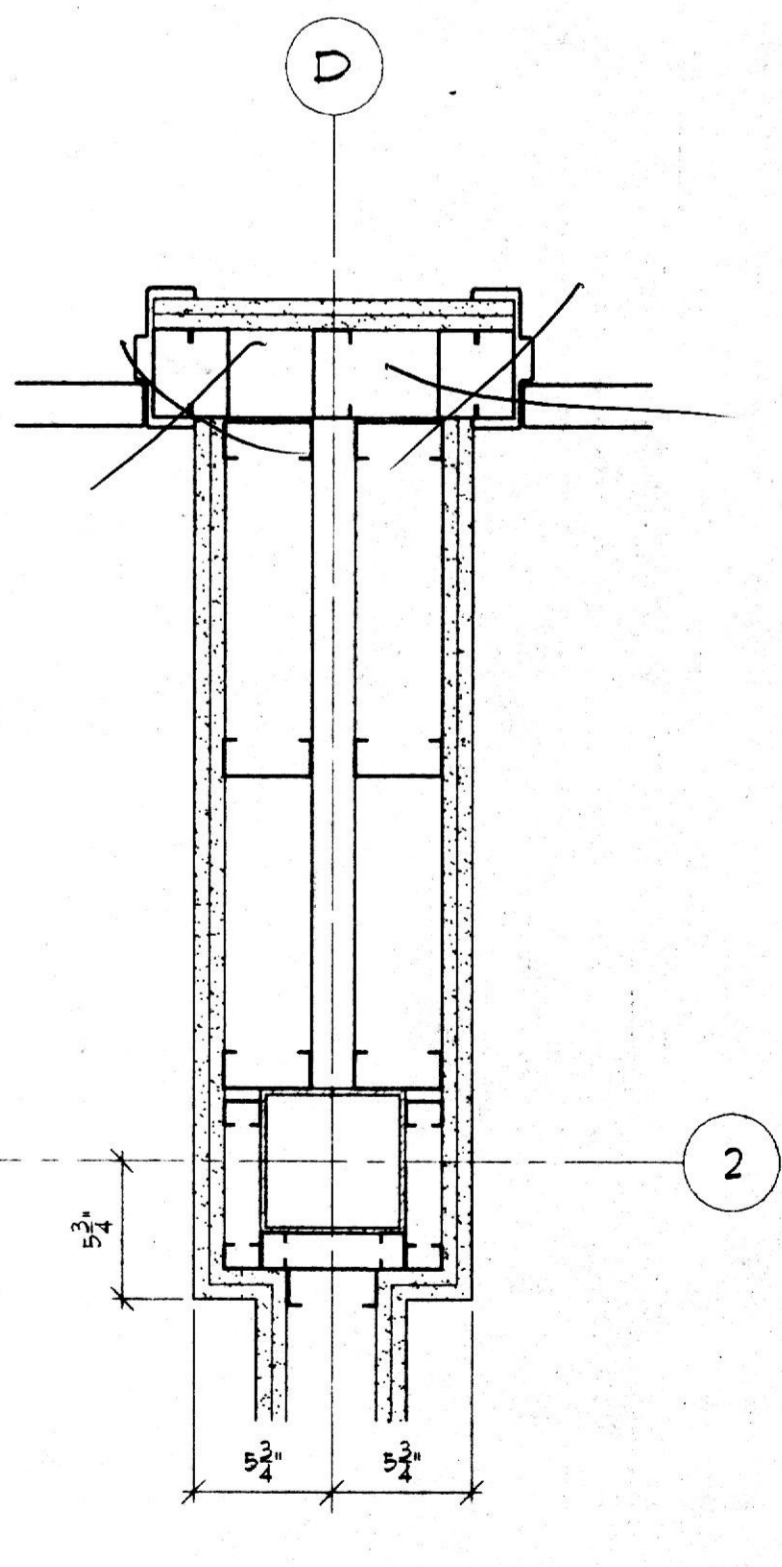
14J CLASSROOM
OPERABLE PARTITION DETAIL
1/2" = 1'-0"



14L SILL DETAIL
1/2" = 1'-0"



14N SILL DETAIL
1/2" = 1'-0"



96 DETAIL AT COLUMN D-2
1/2" = 1'-0"

REVISIONS:		
NO.	DESCRIPTION	DATE

LAST REV. _____
PROJECT NO.: 98-033
DATE: FEB. 16, 1998
SCALE: AS NOTED
TITLE: DETAILS

SHEET: 1