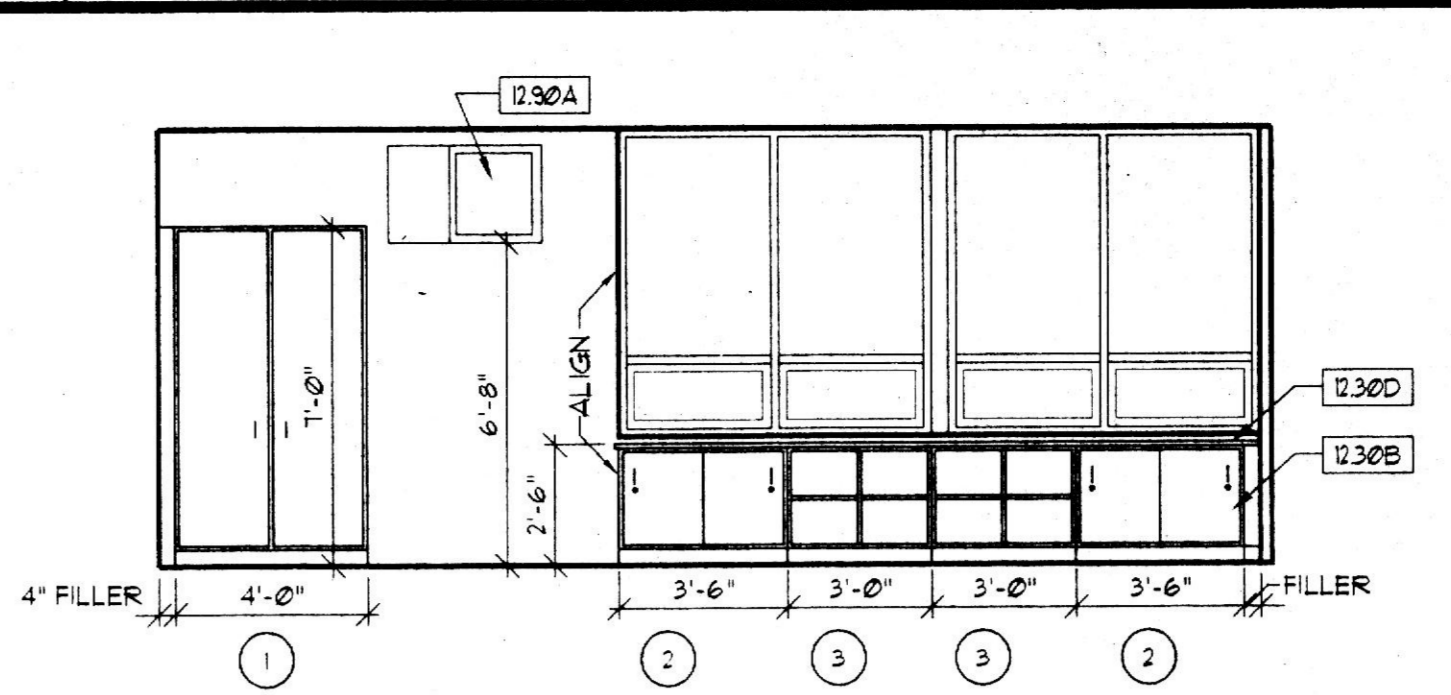
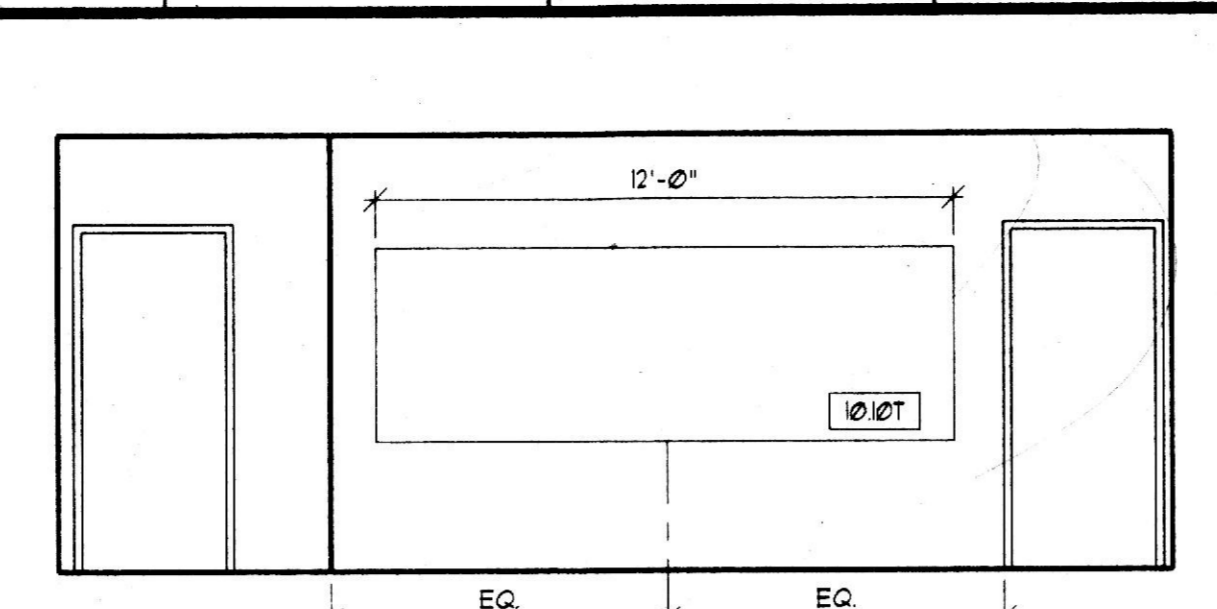
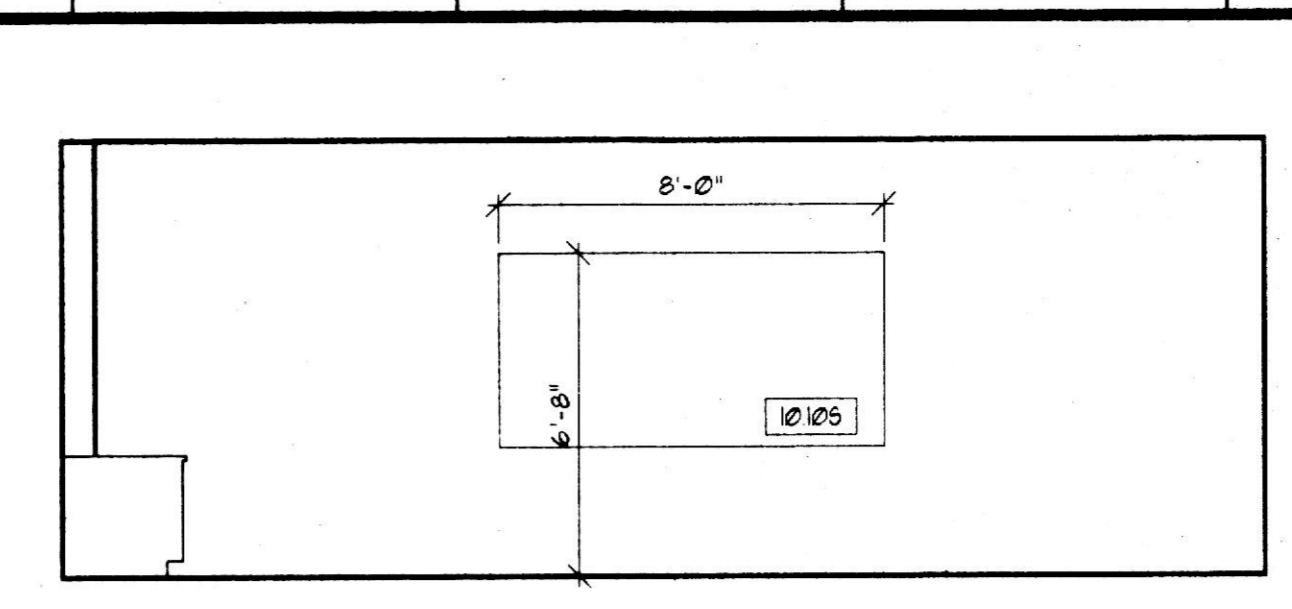
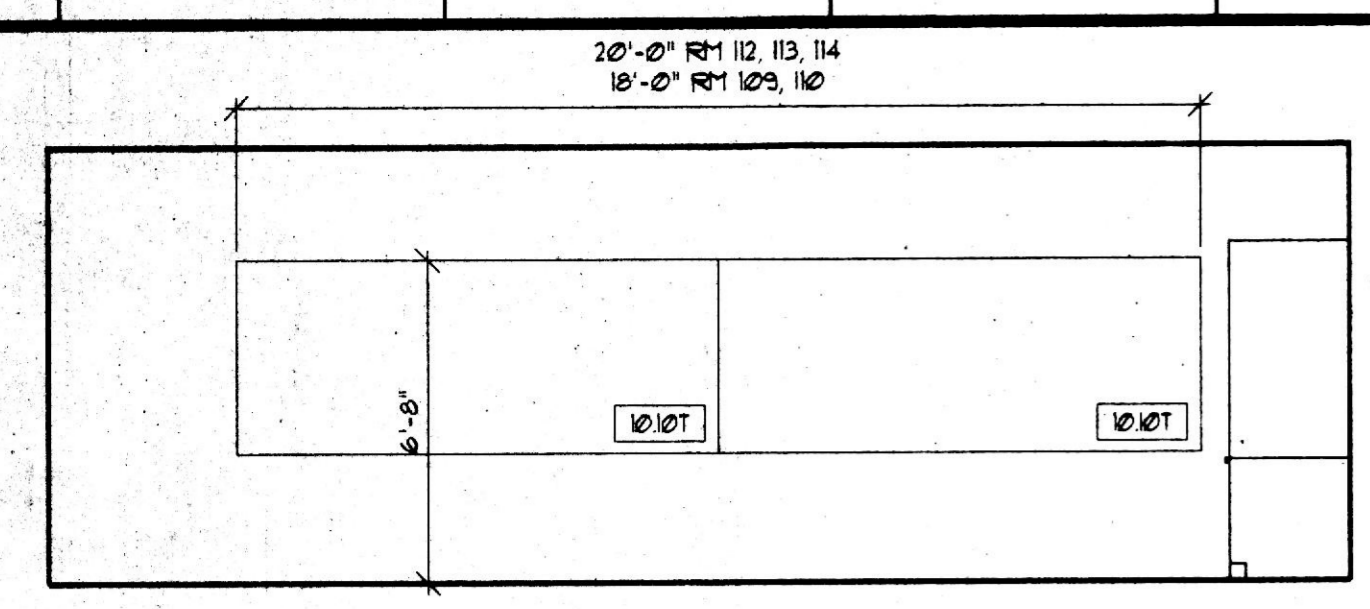


A B C D E F G H J K L M N P Q R S T U

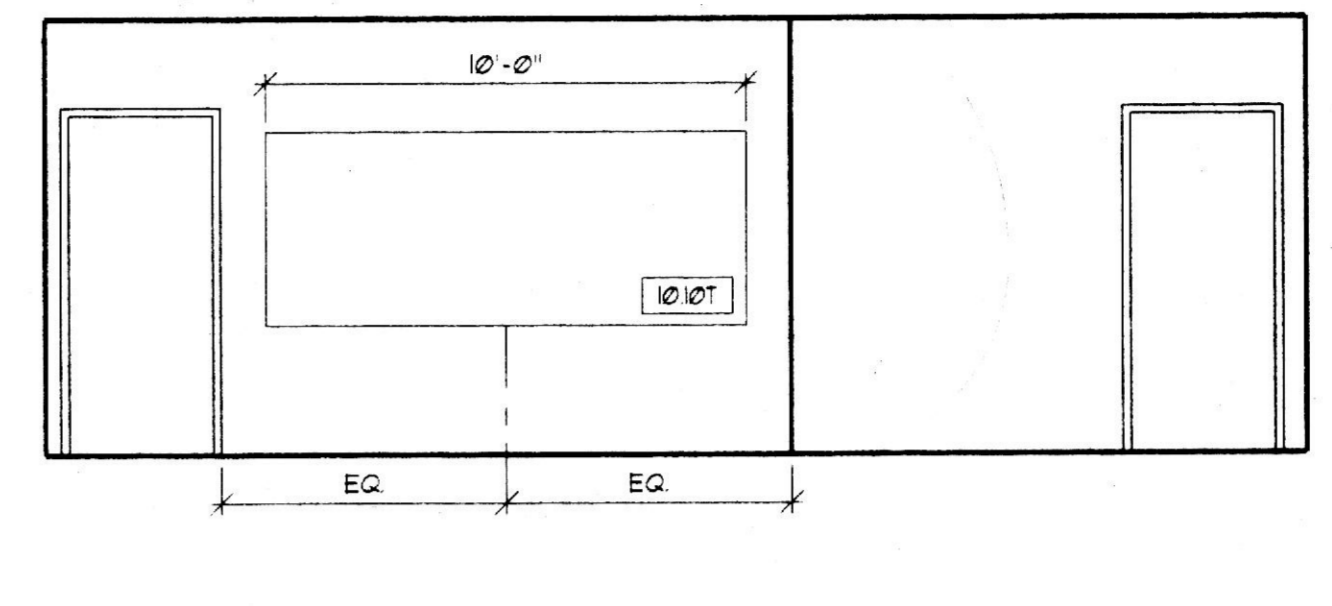
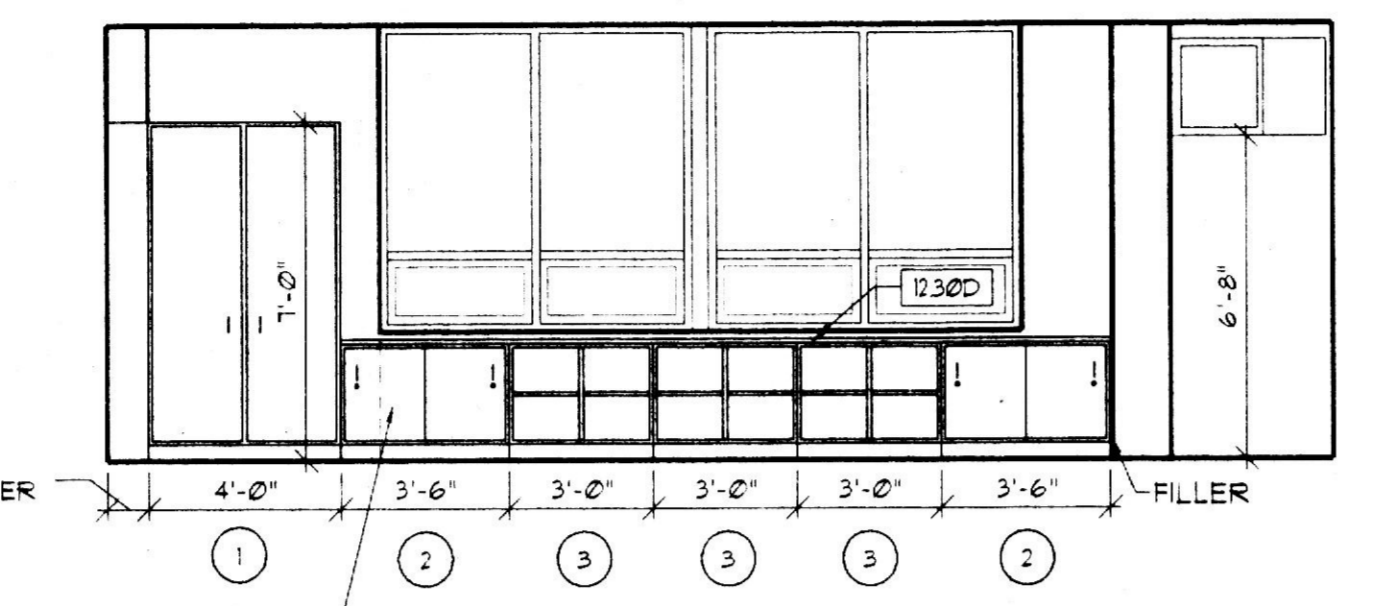
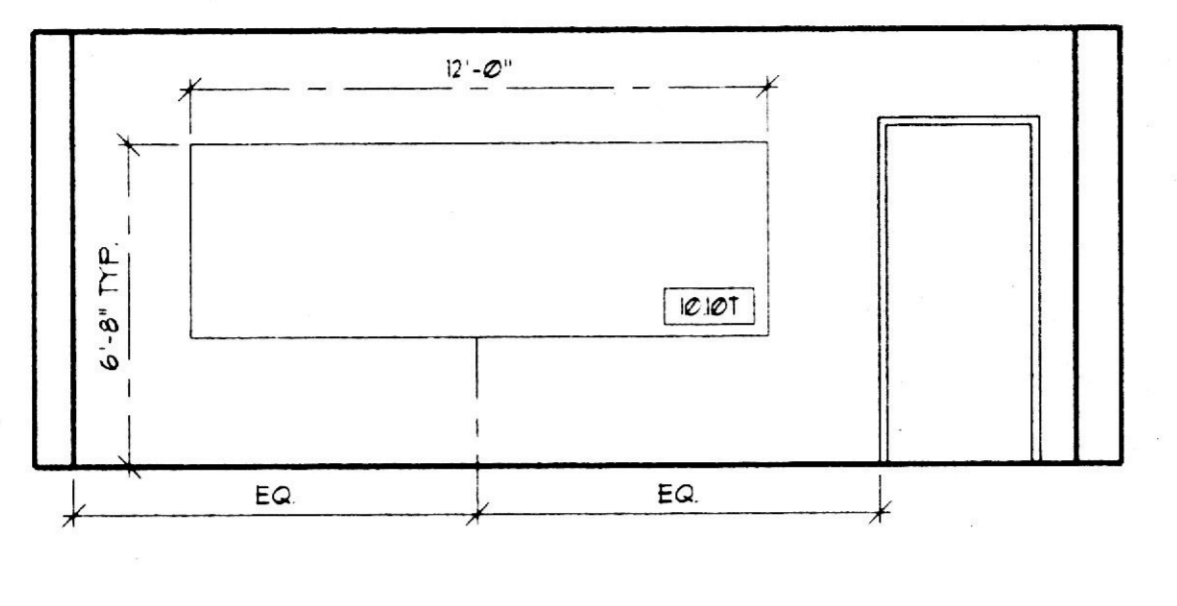
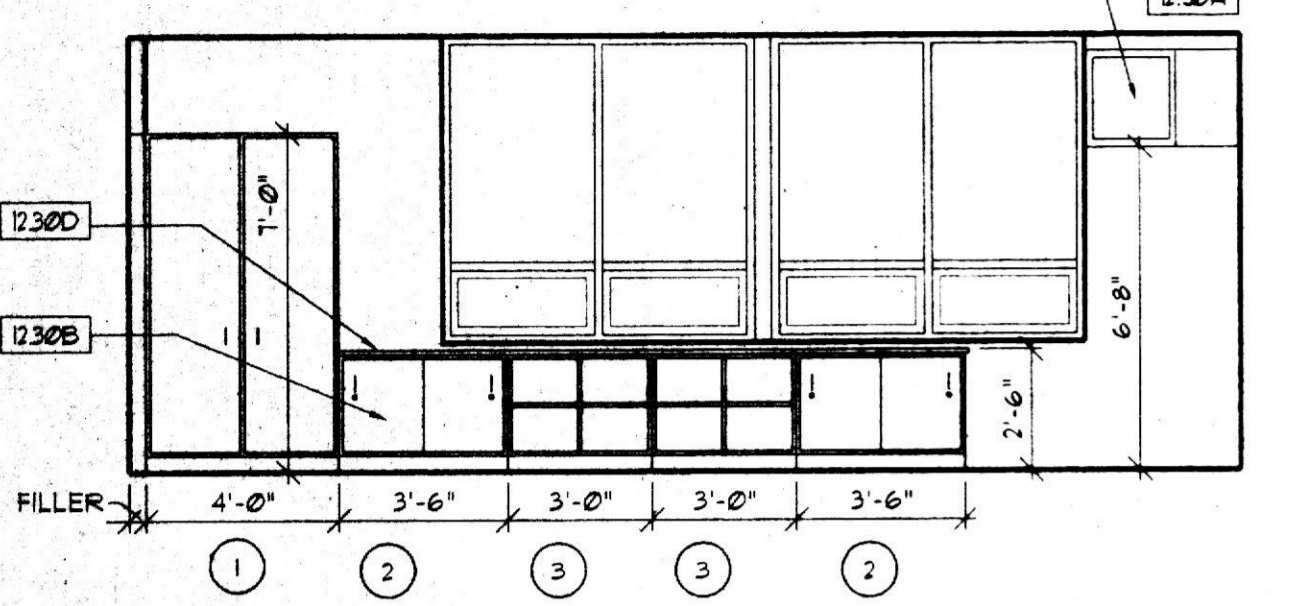


2A MATH & SOCIAL SCIENCE CLASSROOM FRONT ELEVATION
1/4" = 1'-0"

2E MATH & SOCIAL SCIENCE CLASSROOM REAR ELEVATION
1/4" = 1'-0"

2J MATH & SOCIAL SCIENCE CLASSROOM SIDE ELEVATION
1/4" = 1'-0"

2M MATH & SOCIAL SCIENCE CLASSROOM SIDE ELEVATION
1/4" = 1'-0"

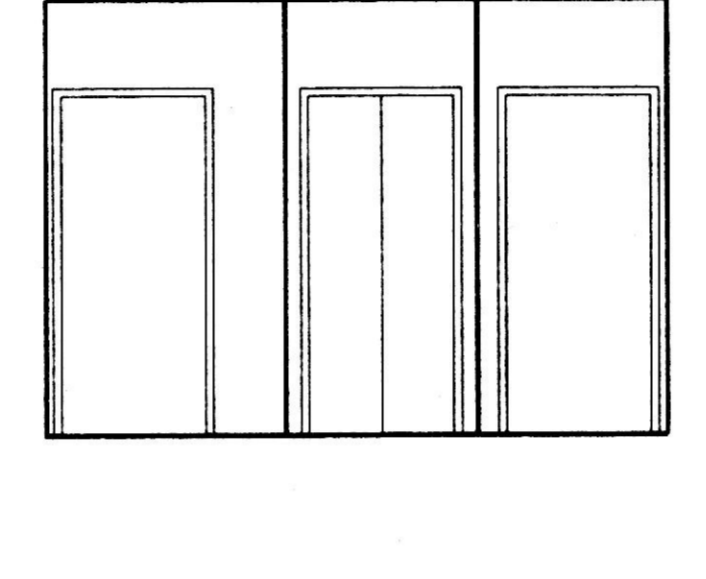
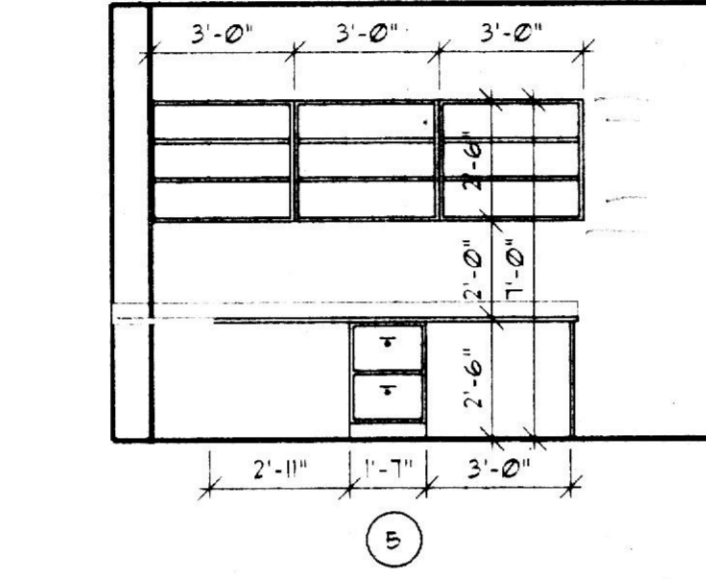
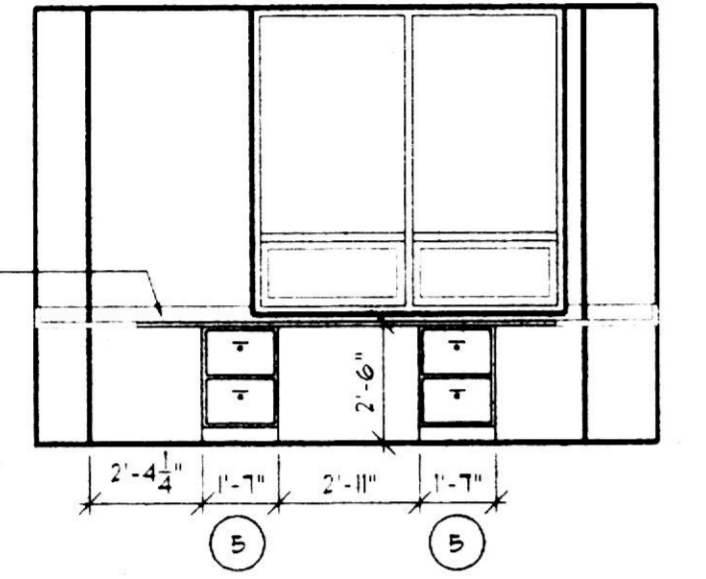
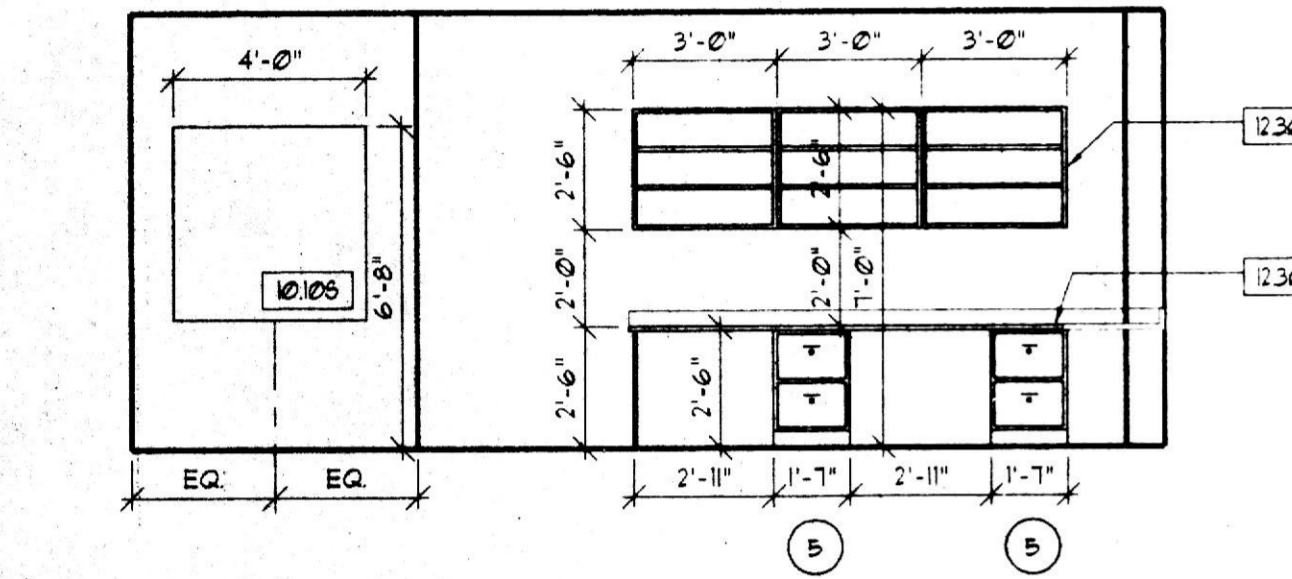


4A MATH & SOCIAL SCIENCE CLASSROOM SIDE ELEVATION
1/4" = 1'-0"

4E MATH & SOCIAL SCIENCE CLASSROOM SIDE ELEVATION
1/4" = 1'-0"

4J MATH & SOCIAL SCIENCE CLASSROOM SIDE ELEVATION
1/4" = 1'-0"

4M MATH & SOCIAL SCIENCE CLASSROOM SIDE ELEVATION
1/4" = 1'-0"



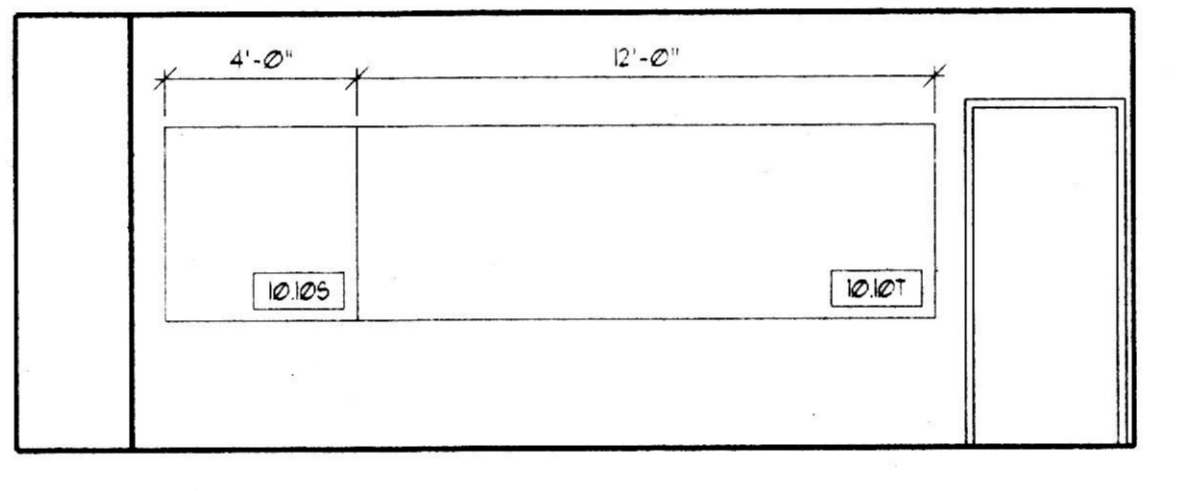
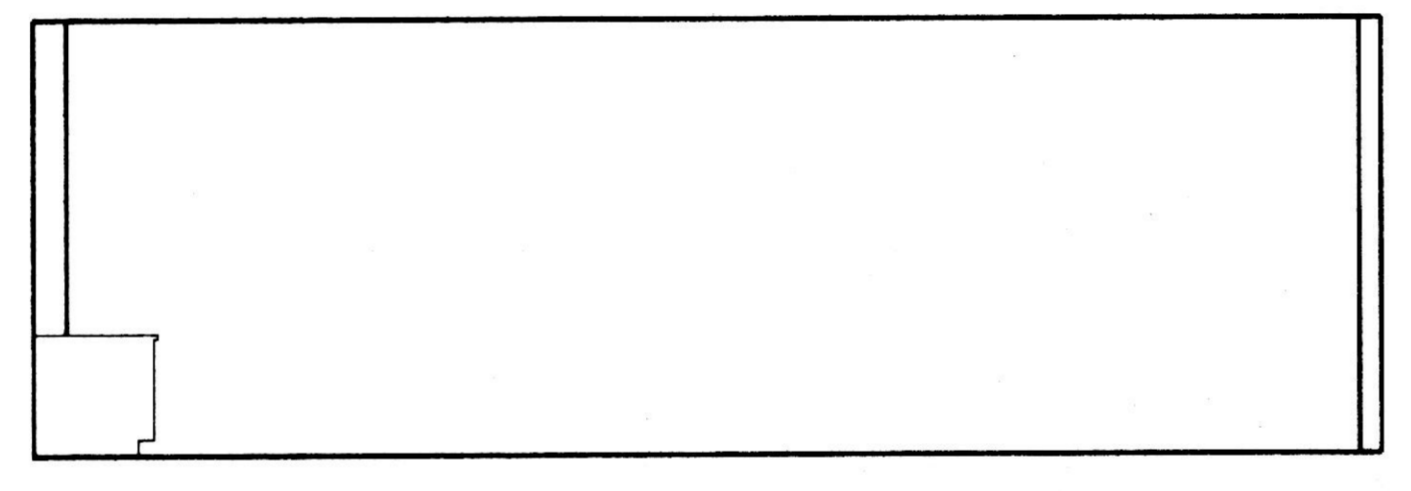
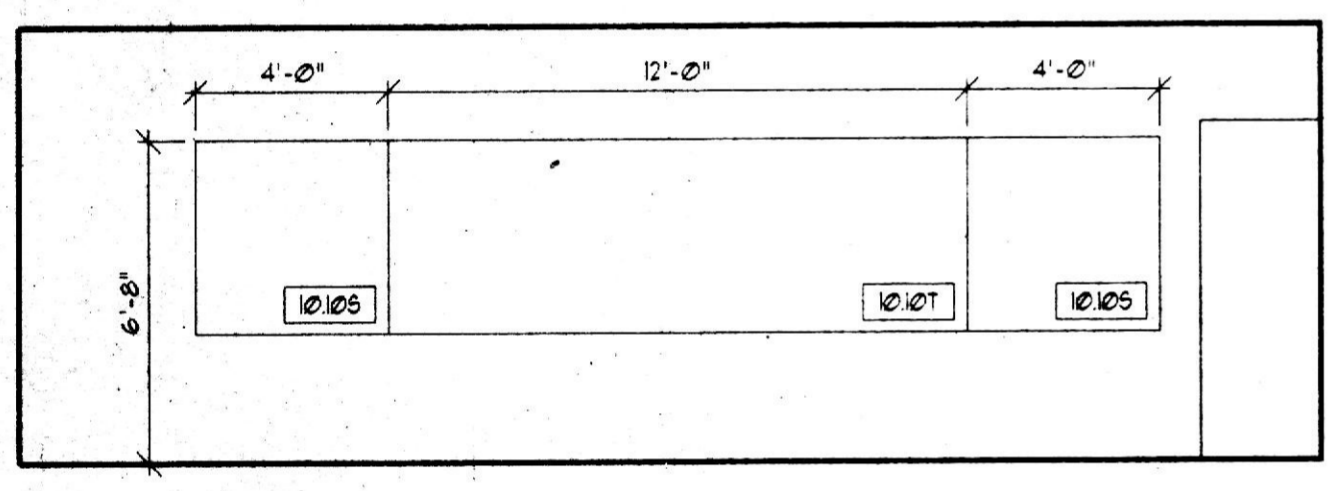
6A MATH OFFICE EAST ELEVATION
1/4" = 1'-0"

6D MATH OFFICE SOUTH ELEVATION
1/4" = 1'-0"

6F MATH OFFICE WEST ELEVATION
1/4" = 1'-0"

6J MATH OFFICE NORTH ELEVATION
1/4" = 1'-0"

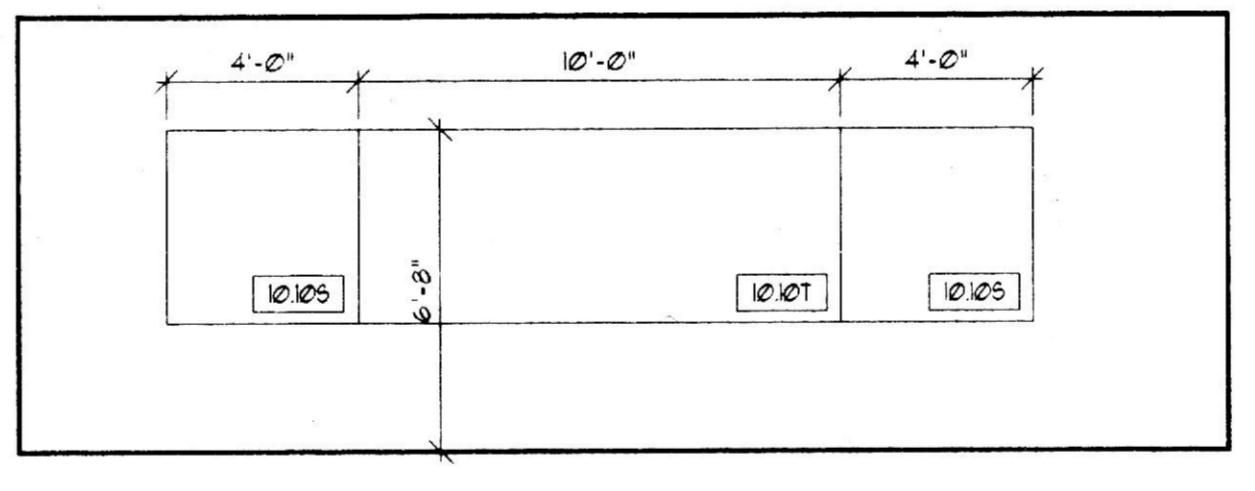
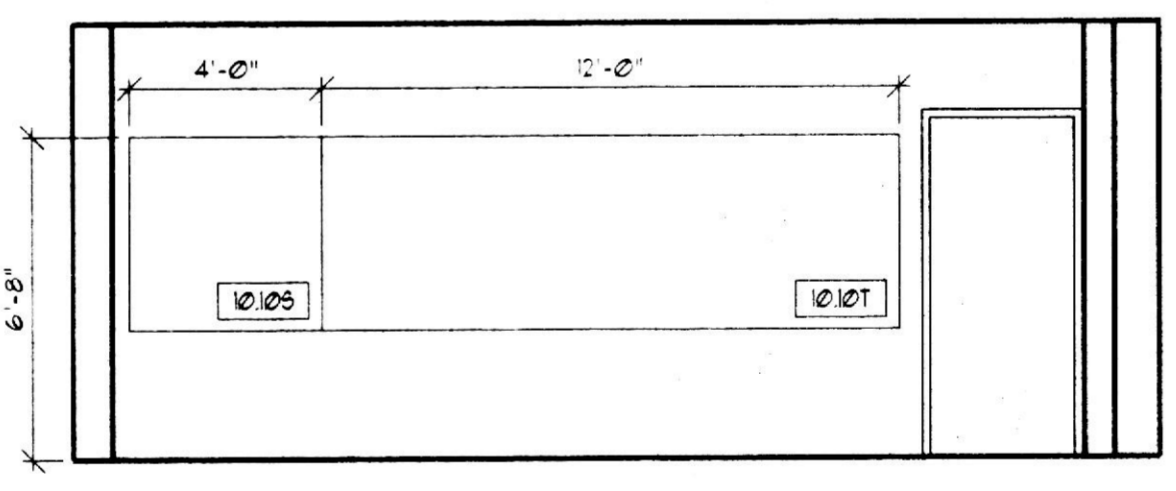
NOTE: ALL BASE CAB. IN MATH OFFICE TO BE KEYPED IN ALIKE



8A SOCIAL STUDIES CLASSROOM FRONT ELEVATION
1/4" = 1'-0"

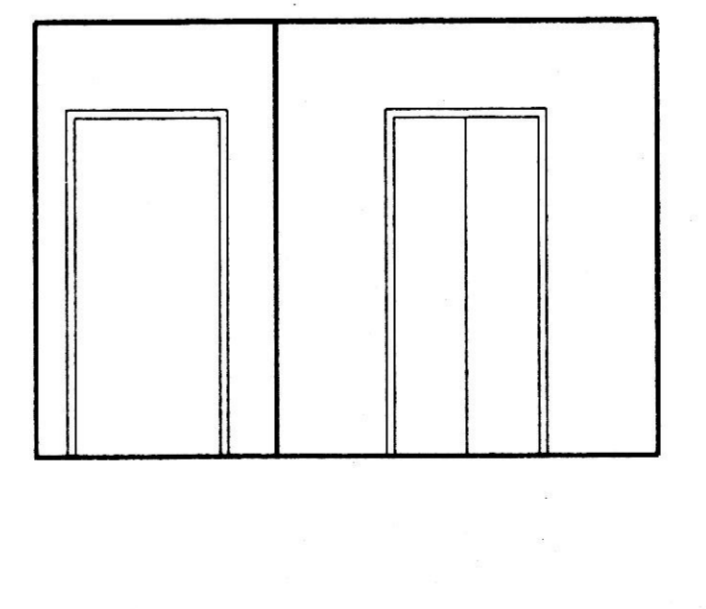
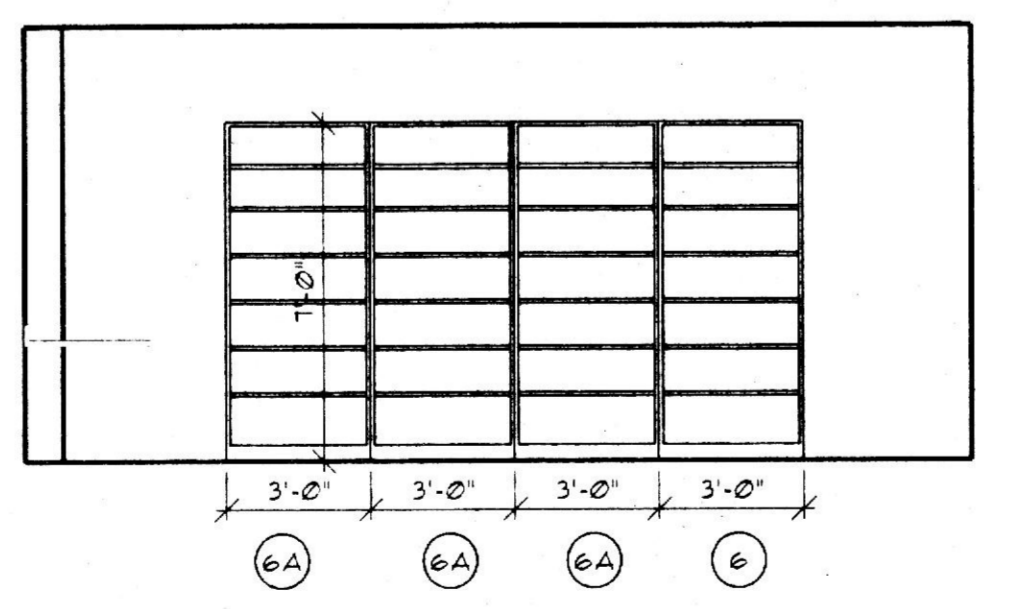
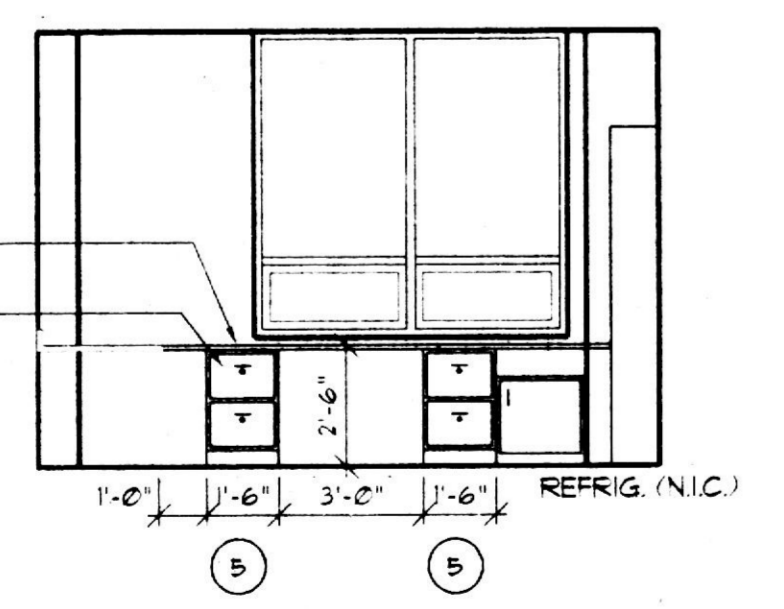
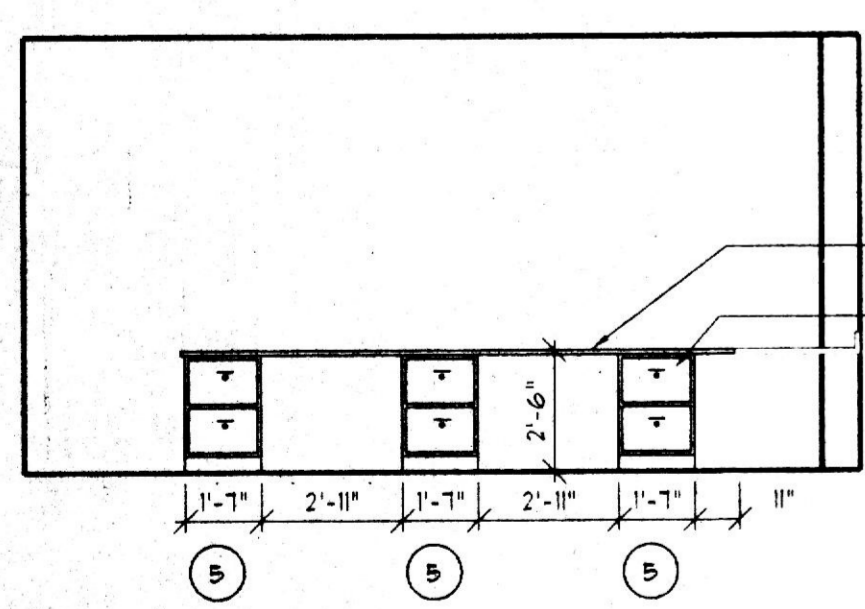
8E SOCIAL STUDIES CLASSROOM REAR ELEVATION
1/4" = 1'-0"

8J SOCIAL STUDIES CLASSROOM SIDE ELEVATION
1/4" = 1'-0"



10E SOCIAL STUDIES CLASSROOM SIDE ELEVATION
1/4" = 1'-0"

10J SOCIAL STUDIES CLASSROOM ELEVATION
1/4" = 1'-0"



12A SOC. STUDIES OFFICE EAST ELEVATION
1/4" = 1'-0"

12D SOC. STUDIES OFFICE SOUTH ELEVATION
1/4" = 1'-0"

12F SOC. STUDIES OFFICE WEST ELEVATION
1/4" = 1'-0"

12K SOC. STUDIES OFFICE NORTH ELEVATION
1/4" = 1'-0"

NOTE: ALL BASE CAB. IN MATH OFFICE TO BE KEYPED IN ALIKE

DRAWING NOTES

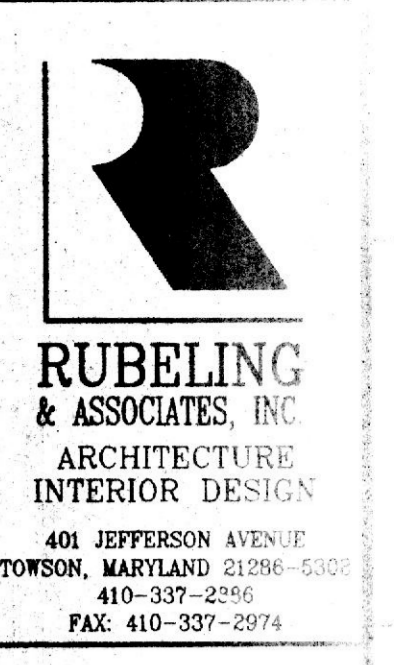
- 552A STAINLESS STEEL HANDRAIL
- 552B S.S. WALL CAP
- 620A 1X6" DRESSED BIRCH - STAINED TO MATCH DOORS
- 620B 6X6" BIRCH WOOD BASE
- 620C 1X6" BIRCH BASE
- 620D BALLET BARRE + BRACKET • 4'-0" MAX. MIRROR W/ S.S. J. CLIP • TOP + BOTTOM - POLISH EXPOSED END
- 881A VENTED BASE FOR WOOD FLOOR ASSEMBLY
- 937A VINYL COVE BASE
- 1010A TACKSTRIP, TOP • 6'-8"
- 1010B CHALKBOARD 4'-0" X 8'-0", TOP • 6'-8"
- 1010C TACKBOARD
- 1010D MARKERBOARD, TOP • 6'-8"
- 1010E RECESSED DISPLAY CASE
- 1050A 12" W X 12" D X 60" H RECESSED METAL LOCKERS ON 4" CONC. CURB. PROVIDE TRIM PANELS AT ENDS AND TOP.
- 1052A RECESSED FIRE EXTINGUISHER
- 1065A MARKERBOARD 4'-0" X 4'-0" AS PART OF OPERABLE PANEL PARTITION
- 1065B OPERABLE PARTITION
- 126A CYCLOTRAMA TRACK + CURTAIN
- 145A ALTERNATING TREAD DEVICE
- 145B DISHWASHER
- 145C REFRIGERATOR
- 145D ICEMAKER
- 130A 1/4" THICK COUNTERTOP WITH 4" BACKSPASH
- 130B INSTITUTIONAL CASEWORK
- 130C VERTICAL SUPPORT - FABRICATE TO MATCH CASEWORK
- 130D 1/4" THICK COUNTERTOP WITH 2" BACKSPASH
- 151A MINI-BLINDS
- 152A T.V. BRACKET
- 152B WATER COOLER - SEE MECH.
- 152C PLUMBING FIXTURE - SEE MECH.
- 162D PIPING - SEE MECH.
- 1620A ELECTRIC PANELS
- 1620C CLOCK - SEE ELEC. DWGS.

LEGEND

- (X) INDICATES REF. *
- (X) INSTITUTIONAL CASEWORK - SEE SPECIFICATION FOR MODEL NO.
- (X) INDICATES REF. *
- (X) METAL STORAGE SHELVING CABINETS - SEE SPEC.
- [Symbol] LOCKABLE KEYPED UNITS

INST. CASEWORK NOTES

- 10' EACH OFFICE CASEWORK TO BE KEYPED ALIKE. (3 DISTINCT SYSTEMS)
- 20' ALL MATH CLASSROOMS TO BE KEYPED ALIKE
- 30' ALL SOCIAL SCIENCE CLASSROOMS TO BE KEYPED ALIKE



RUBELING & ASSOCIATES, INC.
ARCHITECTURE INTERIOR DESIGN
401 JEFFERSON AVENUE
TOWSON, MARYLAND 21286-5000
410-337-2800
FAX: 410-337-2974

PERFORMING ARTS AND CLASSROOM ADDITIONS
NOTRE DAME PREPARATORY SCHOOL
TOWSON, MARYLAND

REVISIONS:

NO.	DESCRIPTION	DATE

LAST REV.:
PROJECT NO.: 98-233
DATE: FEB. 16, 1999
SCALE: 1/4" = 1'-0"
TITLE:
CLASSROOM BUILDING INTERIOR ELEVATIONS

SHEET: I
605