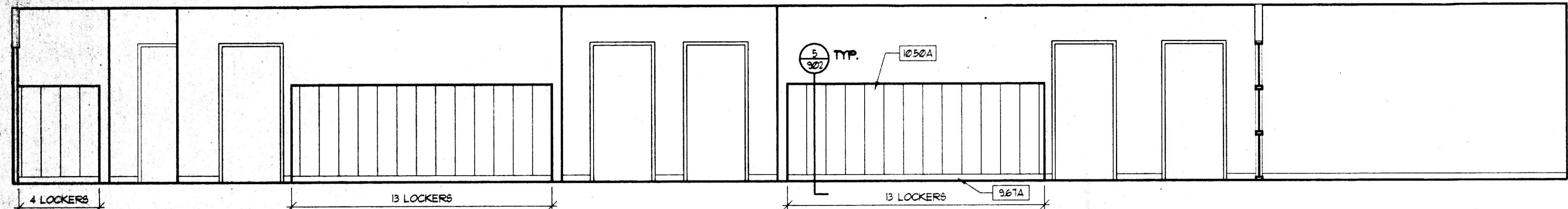
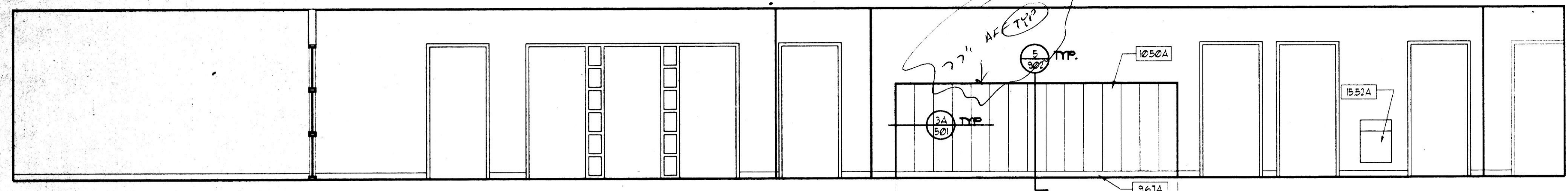


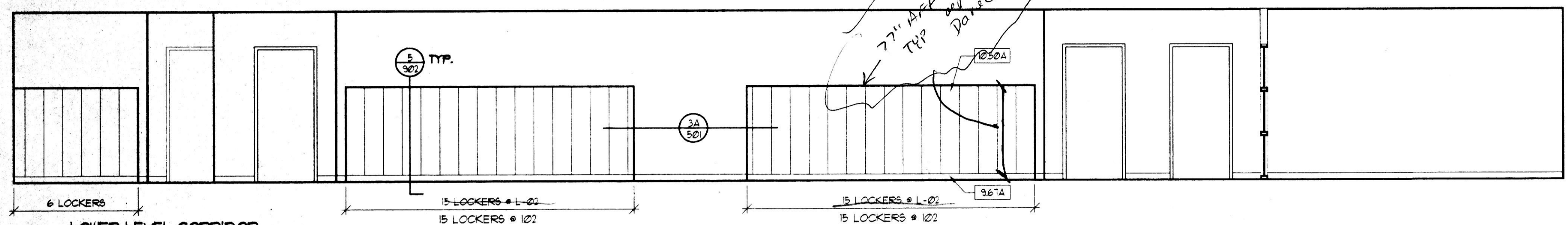
A B C D E F G H J K L M N P Q R S T



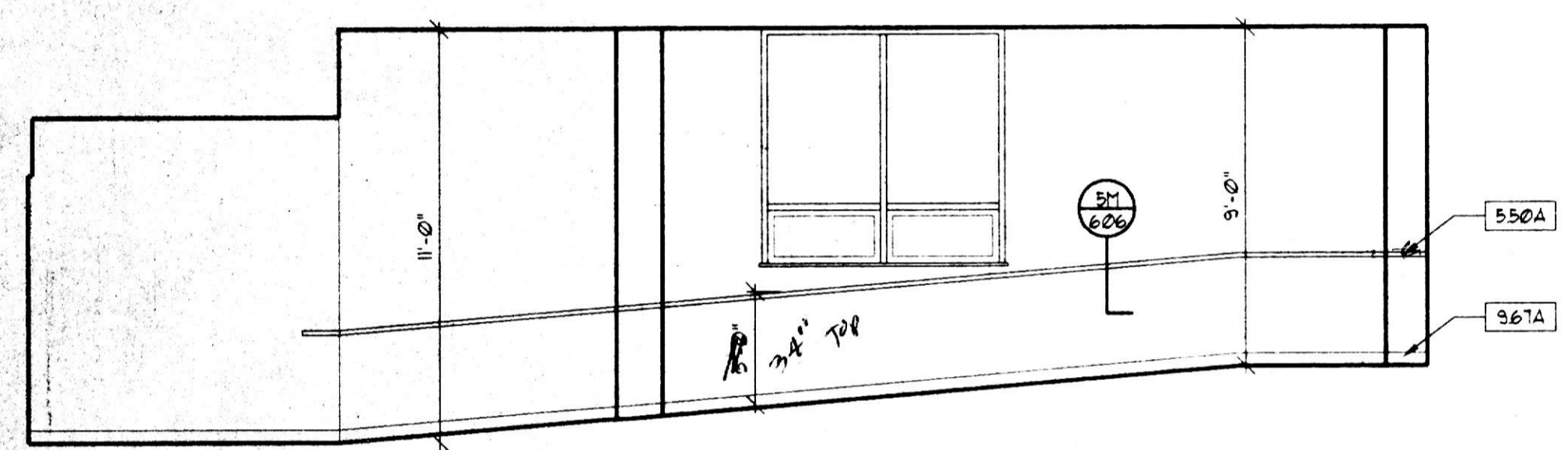
3A MAIN LEVEL CORRIDOR SOUTH ELEVATION
1/4" = 1'-0"



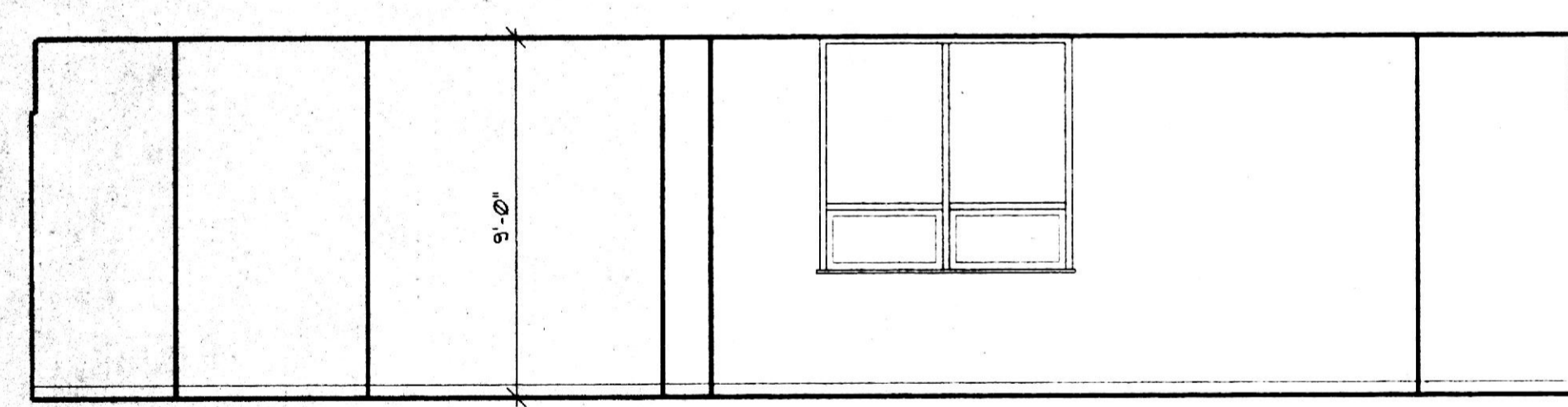
5A MAIN AND LOWER LEVEL CORRIDORS NORTH ELEVATION
1/4" = 1'-0"



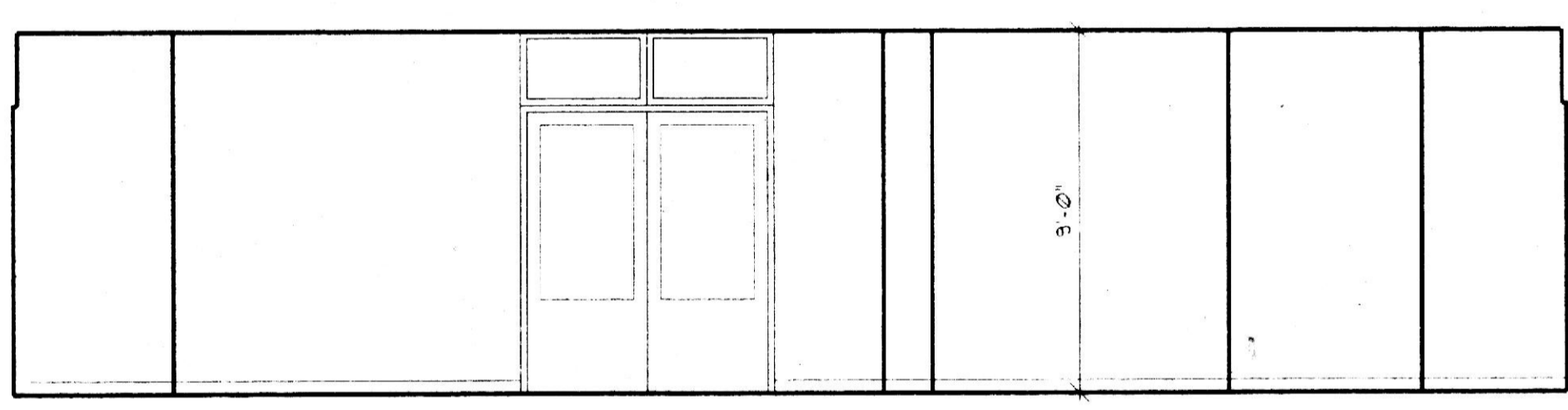
7A LOWER LEVEL CORRIDOR SOUTH ELEVATION
1/4" = 1'-0"



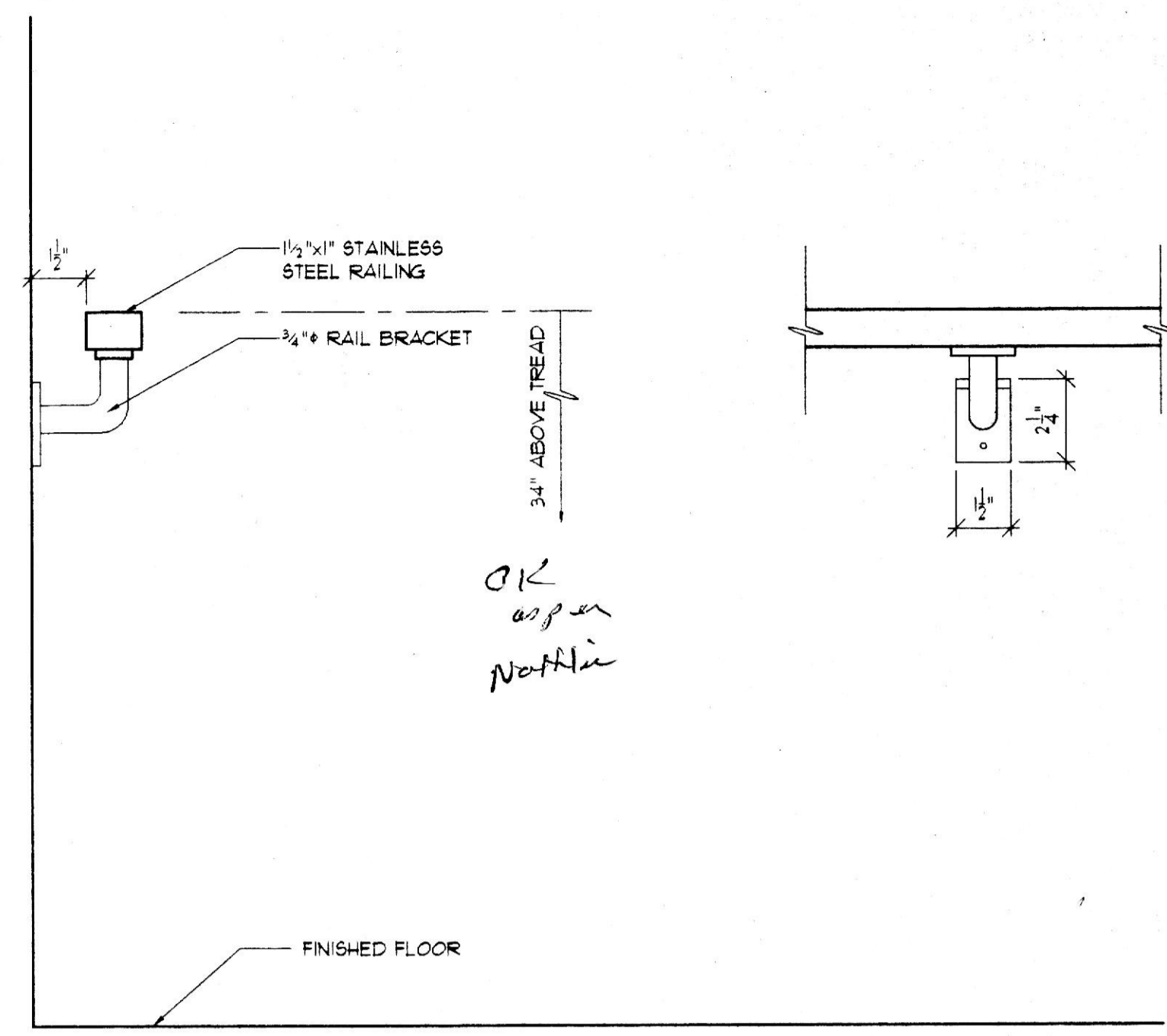
9A MAIN LEVEL LINK SOUTH ELEVATION
1/4" = 1'-0"



11A LOWER LEVEL LINK SOUTH ELEVATION
1/4" = 1'-0"



11F LOWER LEVEL LINK NORTH ELEVATION
1/4" = 1'-0"



5M HANDRAIL DETAIL
3/8" = 1'-0"

DRAWING NOTES

- 550A STAINLESS STEEL HANDRAIL
- 550B S.S. WALL CAP
- 620A 2X6" DRESSED BIRCH - STAINED TO MATCH DOORS
- 620B 6X6" BIRCH WOOD BASE
- 620C 6X6" BIRCH BASE
- 620D BALLET BARRE & BRACKET # 4'-0" MAX. MIRROR W/ S.S. J CLIP # TOP & BOTTOM - POLISH EXPOSED END
- 881A
- 964A VENTED BASE FOR WOOD FLOOR ASSEMBLY
- 967A VINYL COVE BASE
- 1010A TACKSTRIP, TOP # 8'-4" AFF. UNO.
- 1010C CHALKBOARD 4'-0" X 8'-0", TOP # 1'-4" AFF. UNO.
- 1010E TACKBOARD
- 1010T MARKERBOARD, TOP # 1'-4" AFF.
- 1041A RECESSED DISPLAY CASE
- 1050A 12" W X 12" D X 6" H RECESSED METAL LOCKERS ON 4" CONC. CURB. PROVIDE TRIM PANELS AT ENDS AND TOP.
- 1051A RECESSED FIRE EXTINGUISHER
- 1065A MARKERBOARD 4'-0" X 4'-0" AS PART OF OPERABLE PANEL PARTITION
- 1065B OPERABLE PARTITION
- 1066A CYCLORAMA TRACK & CURTAIN
- 145A ALTERNATING TREAD DEVICE
- 145B DISHWASHER
- 145C REFRIGERATOR
- 145D ICEMAKER
- 230A 1/4" THICK COUNTERTOP WITH 4" BACKSPLASH
- 230B INSTITUTIONAL CASEWORK
- 230C VERTICAL SUPPORT - FABRICATE TO MATCH CASEWORK
- 230D 1/4" THICK COUNTERTOP WITH 2" BACKSPLASH
- 321A MINI-BLINDS
- 321B T.V. BRACKET
- 353A WATER COOLER - SEE MECH.
- 362A PLUMBING FIXTURE - SEE MECH.
- 362D PIPING - SEE MECH.
- 3620A ELECTRIC PANELS
- 3620C CLOCK - SEE ELEC. DUGS.

LEGEND

- (X) INDICATES REF. *
- (X) INSTITUTIONAL CASEWORK - SEE SPECIFICATION FOR MODEL NO.
- (X) INDICATES REF. *
- (X) METAL STORAGE SHELVING CABINETS - SEE SPEC.

LOCKER TABULATION

LOWER LEVEL	51
MAIN LEVEL	45
TOTAL	96

PERFORMING ARTS AND CLASSROOM ADDITIONS
 NOTRE DAME PREPARATORY SCHOOL
 TOWSON, MARYLAND

REVISIONS:

NO.	DESCRIPTION	DATE

LAST REV.:
 PROJECT NO.: 98-023
 DATE: FEB 16, 1999
 SCALE: 1/4" = 1'-0"
 TITLE:
 CLASSROOM BUILDING INTERIOR ELEVATIONS

SHEET: I

606