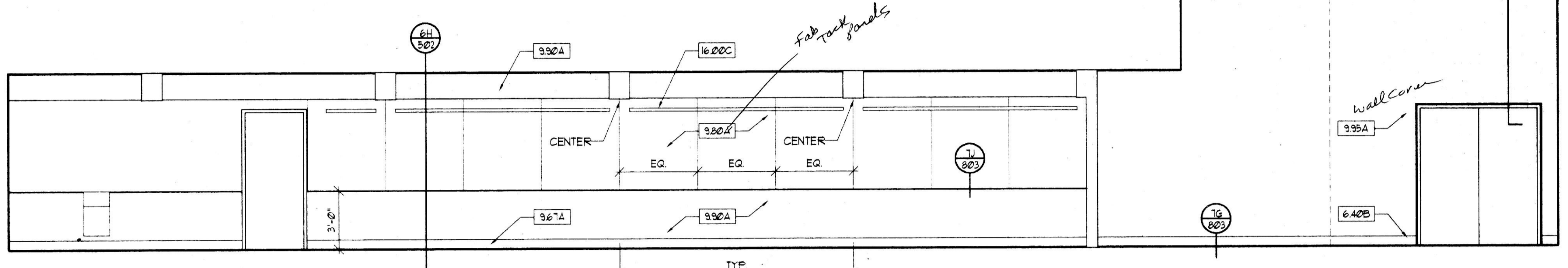
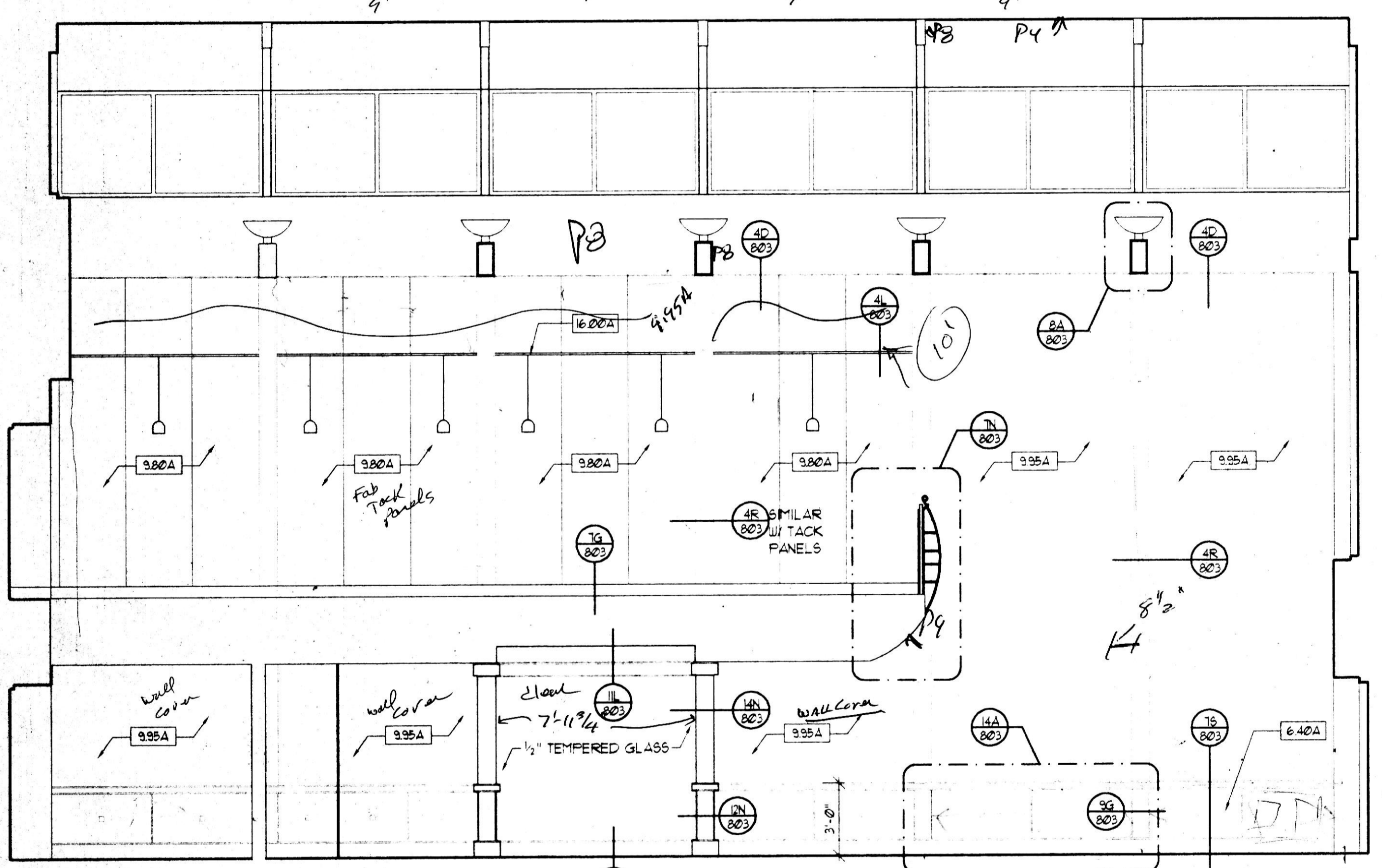


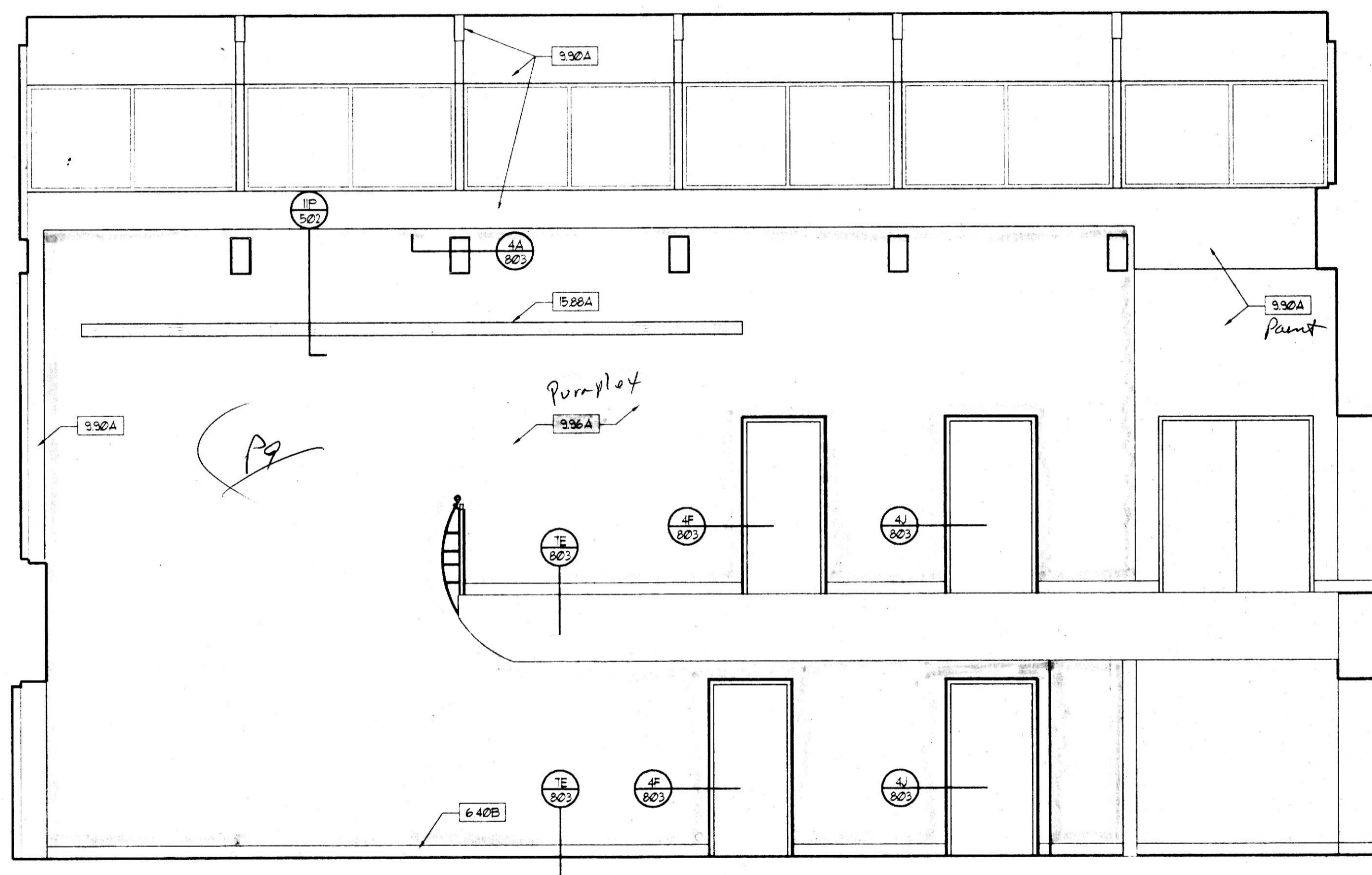
4A MAIN LEVEL GALLERIA / CORRIDOR EAST ELEVATION  
1/4" = 1'-0"



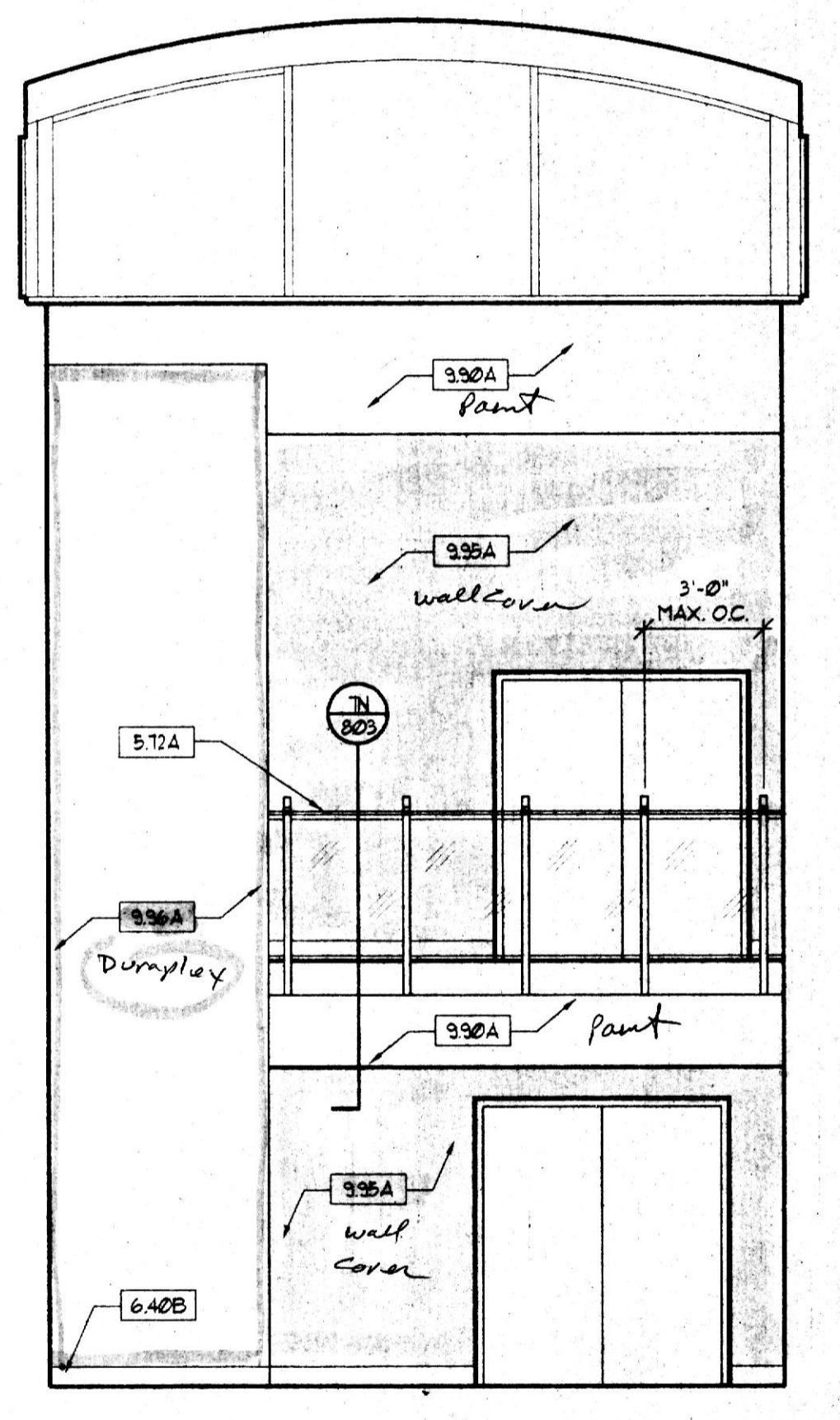
6A MAIN LEVEL GALLERIA / CORRIDOR WEST ELEVATION  
1/4" = 1'-0"



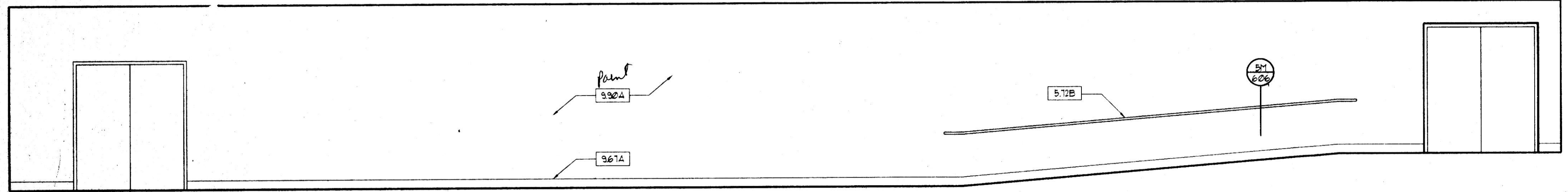
10A MAIN AND LOWER LEVEL LOBBY / GALLERIA SOUTH ELEVATION  
1/4" = 1'-0"



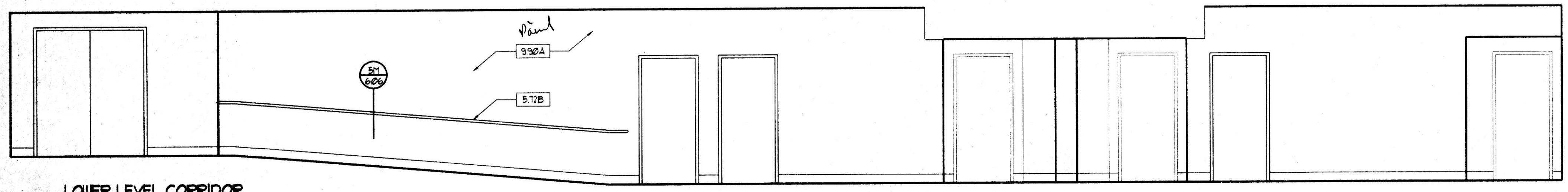
10J MAIN AND LOWER LEVEL LOBBY / GALLERIA NORTH ELEVATION  
1/4" = 1'-0"



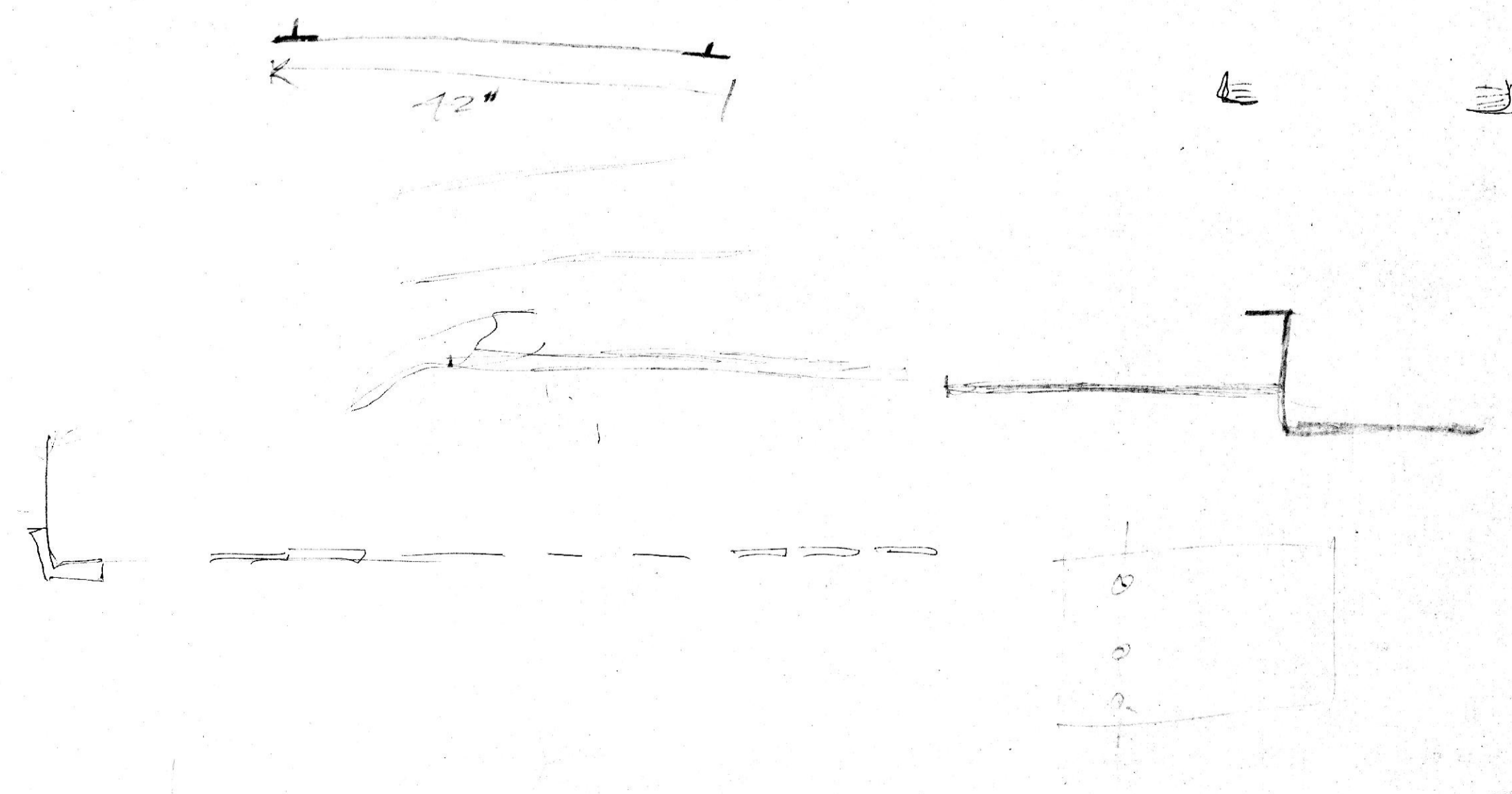
10S MAIN AND LOWER LEVEL LOBBY / GALLERIA EAST ELEVATION  
1/4" = 1'-0"



12A LOWER LEVEL CORRIDOR WEST ELEVATION  
1/4" = 1'-0"



14A LOWER LEVEL CORRIDOR EAST ELEVATION  
1/4" = 1'-0"



**DRAWING NOTES**

5.17A	GLASS-METAL RAILING
5.17B	WALL RAILING
6.40A	WOOD PANELING
6.40B	WOOD BASE
9.25A	PAINTED LIGHT COVE
9.54A	LINEAR METAL CEILING
9.61A	VINYL COVE BASE
9.62A	FABRIC WRAPPED TACK PANELS
9.90A	PAINT GUBS
9.95A	WALL COVERING
9.96A	DURAFLEX COATING
9.98A	DIFFUSER SEE MECH. DUGS
16.00A/C	LOW VOLTAGE TRACK LIGHTING SEE ELEC. DUGS

**RUBELING & ASSOCIATES, INC.**  
ARCHITECTURE  
INTERIOR DESIGN  
401 JEFFERSON AVENUE  
TOWSON, MARYLAND 21286-5000  
410-337-2888  
FAX: 410-337-2974

PERFORMING ARTS AND CLASSROOM ADDITIONS  
 NOTRE DAME PREPARATORY SCHOOL  
 TOWSON, MARYLAND

**REVISIONS:**

NO.	DESCRIPTION	DATE

LAST REV: PROJECT NO. 88-033  
DATE: FEB. 16, 1999  
SCALE: AS NOTED  
TITLE: PERFORMING ARTS ADDITION INTERIOR ELEVATION CONCEPTS  
SHEET: I  
801