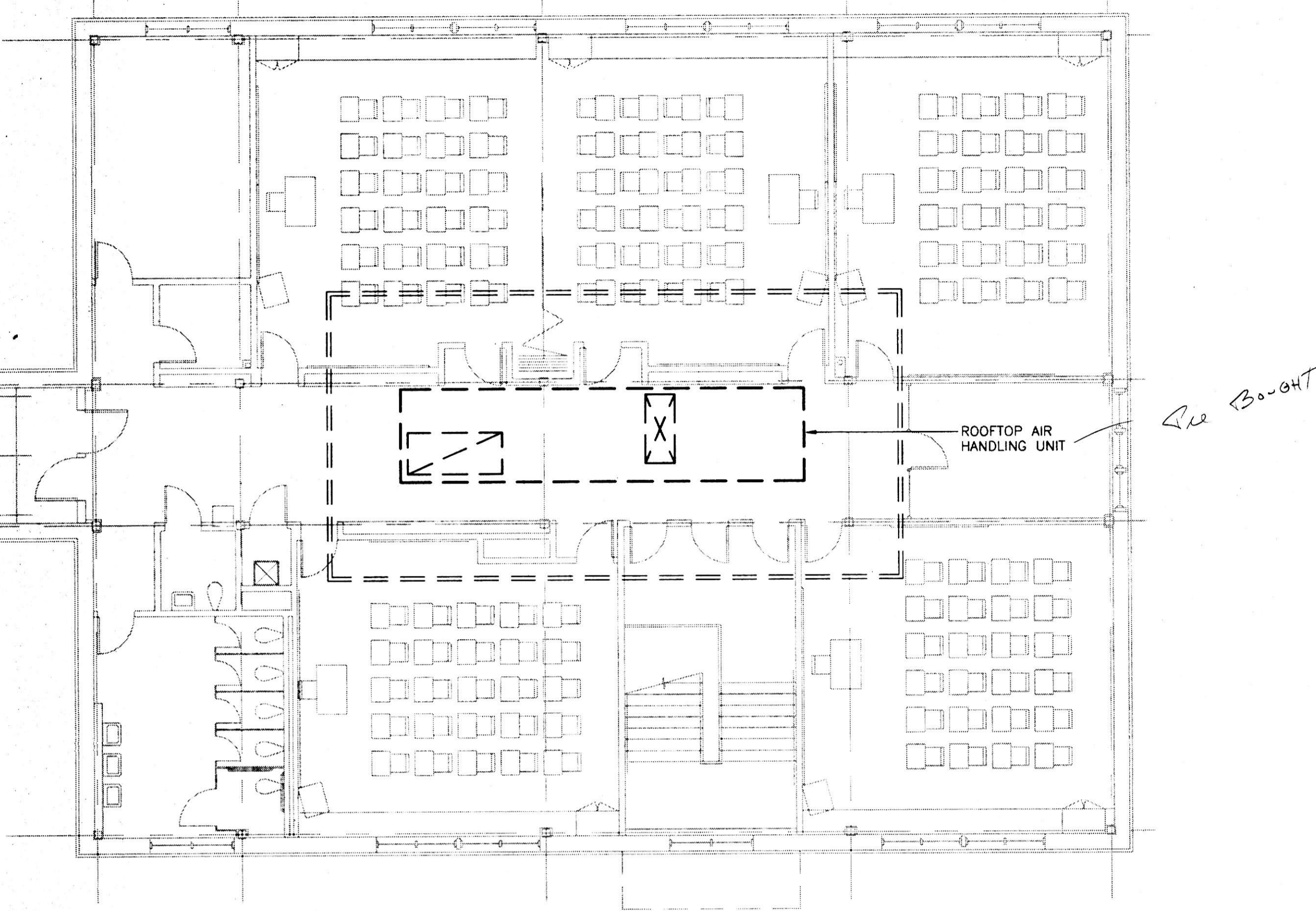
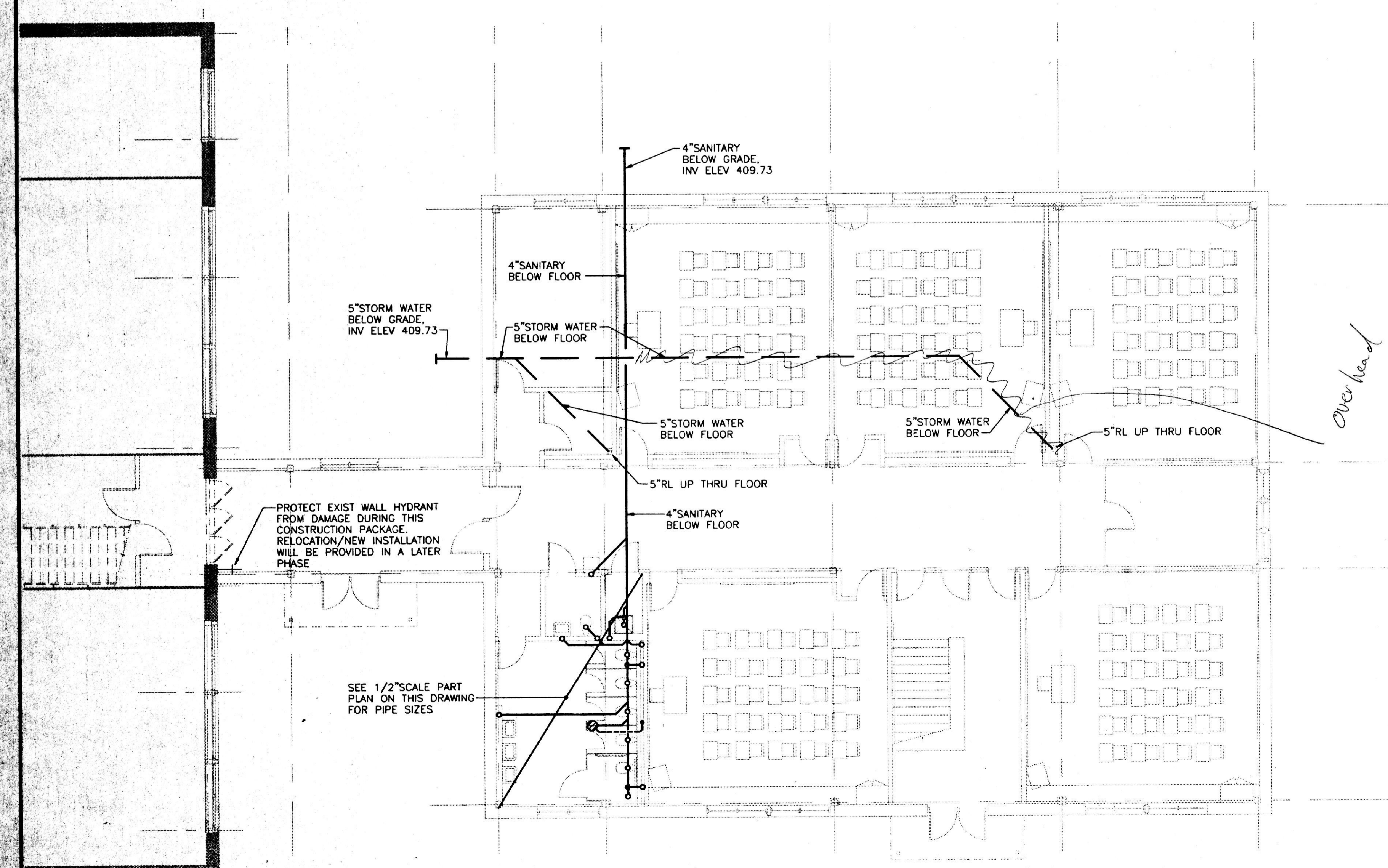


ROOFTOP UNIT SCHEDULE																
DESIG	AREA SERVED	AIR DELIVERY	CFM	O.A. CFM	E.S.P. IN. W.G.	SUPPLY FAN HP	SUPPLY/EXHAUST FAN HP	COOLING CAPACITY •			HEATING CAPACITY			MODEL	VOLTAGE	REMARKS
								TOTAL LOAD (MBH)	SENS. LOAD (MBH)	EVAPORATOR ENTERING AIR DB/WB	GAS FURNACE INPUT MBH	GAS FURNACE OUTPUT MBH	EAT			
RTU-1	CLASSROOM WING	VARIABLE AIR VOLUME	12,000	5,200	3.0	20	7.5	629	409	80F/67F	850	680	38	TRANE MODEL SFHFC55	208V/3Ø/60HZ	MAXIMUM UNIT AND ACCESSORIES WEIGHT - 9,800 POUNDS

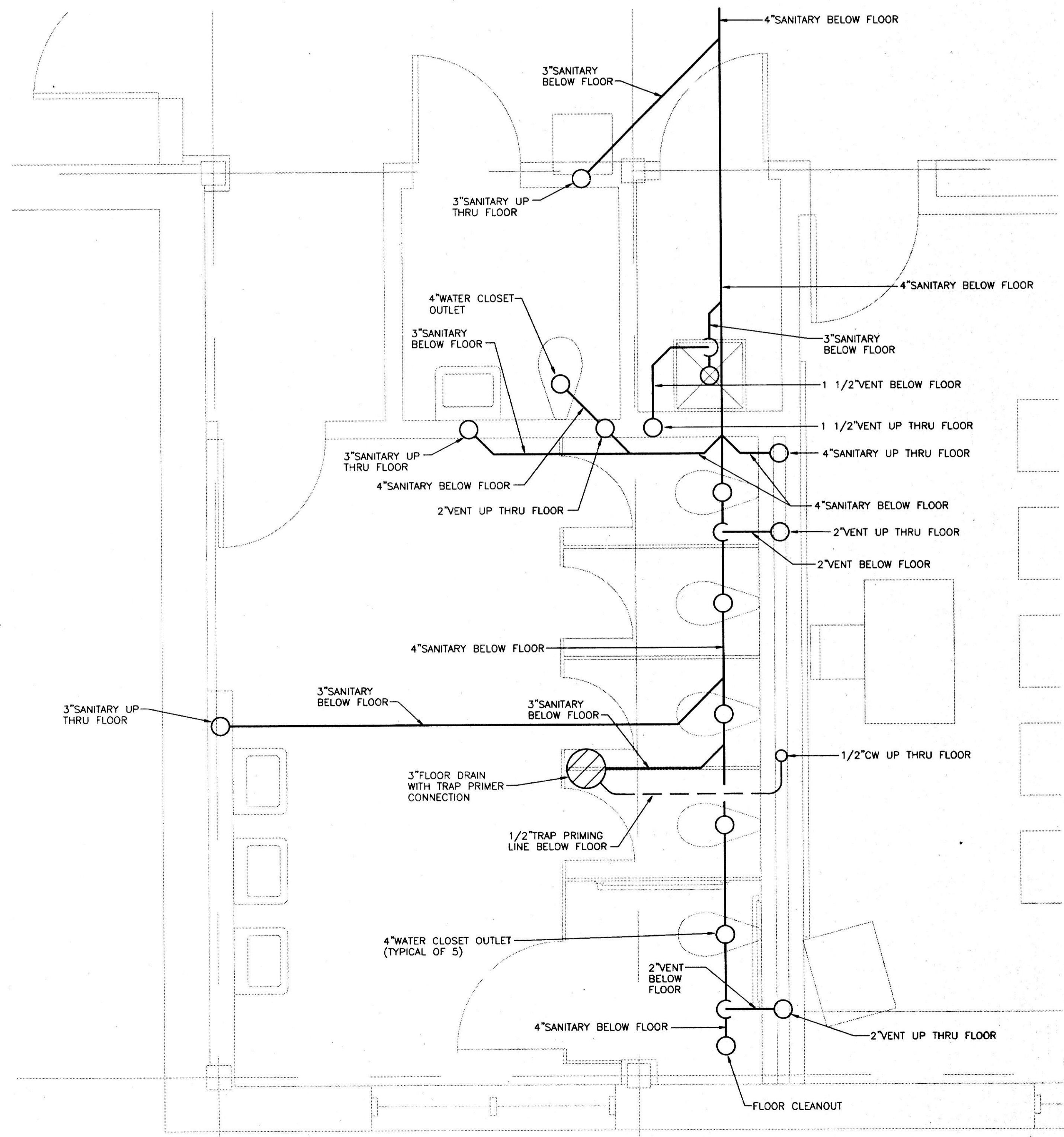
- NOTES:**
- UNIT BASED ON 78°F DRY BULB/65°F WET BULB ROOM CONDITIONS
 - UNIT SHALL BE INSTALLED ON INSULATED ROOF CURB
 - ROOF CURB SHALL BE A MINIMUM 14" HIGH
 - UNIT SHALL BE COMPLETE WITH FACTORY VARIABLE FREQUENCY DRIVE FOR SUPPLY FAN
 - EXHAUST/RETURN FAN SHALL BE FACTORY VARIABLE FREQUENCY DRIVE
 - THE GAS HEAT SHALL BE FULLY MODULATING WITH STAINLESS STEEL BURNER SECTION



MAIN LEVEL FLOOR PLAN - MECHANICAL
SCALE: 1/8" = 1'-0"



LOWER LEVEL FLOOR PLAN - MECHANICAL
SCALE: 1/8" = 1'-0"



PART PLAN - PLUMBING
SCALE: 1/2" = 1'-0"



CENTURY ENGINEERING
32 WEST ROAD
TOWSON, MARYLAND 21284
(410) 325-8070

CLASSROOM ADDITION
NOTRE DAME PREPARATORY SCHOOL
TOWSON, MARYLAND

REVISIONS:

NO.	DESCRIPTION	DATE

LAST REV.:
PROJECT NO.: 98-03
DATE: OCT. 15, 1998
SCALE: AS NOTED

TITLE:
CLASSROOM BUILDING MECHANICAL PLANS AND SCHEDULES

SHEET: