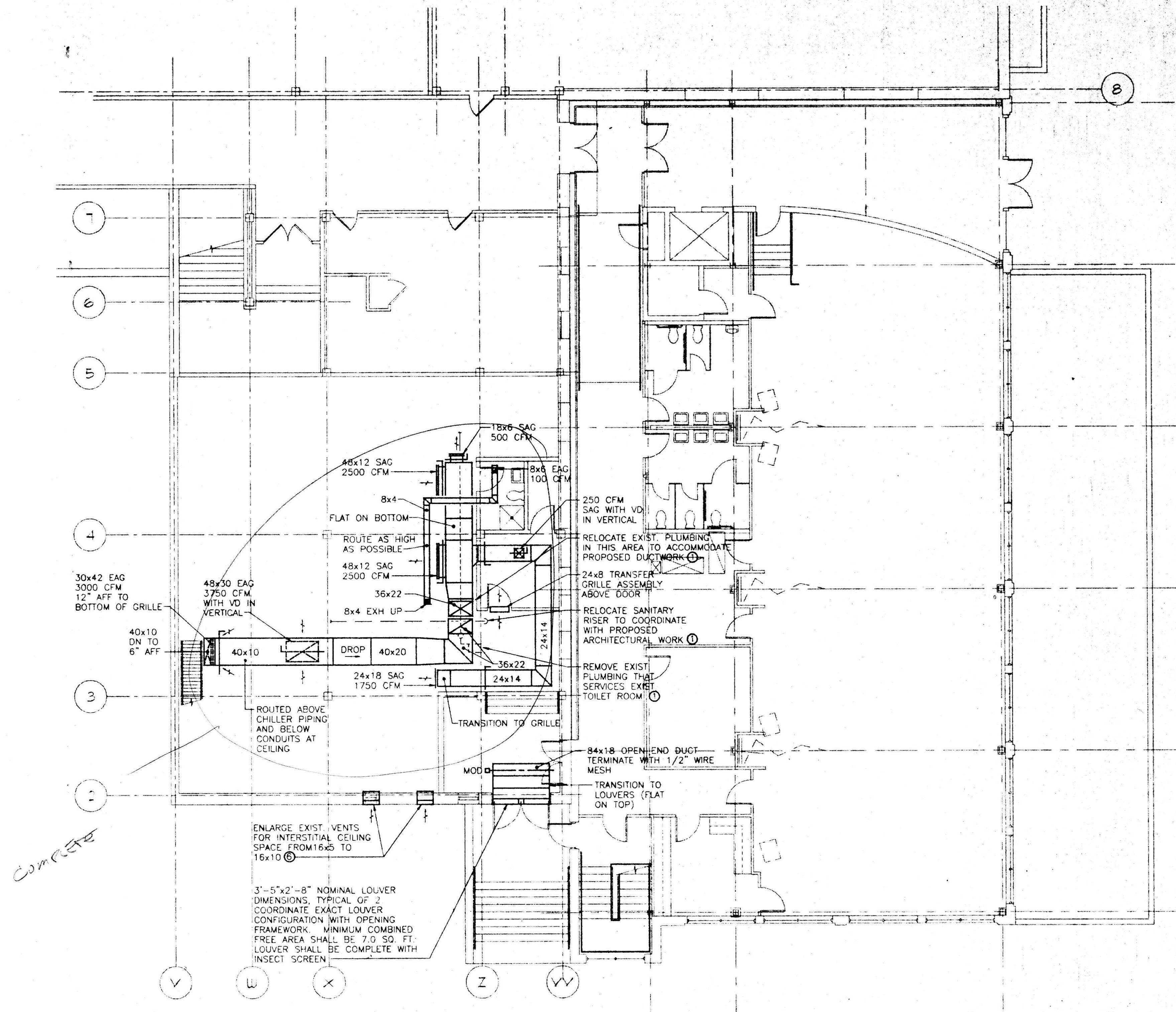


**MAIN LEVEL FLOOR PLAN - MECHANICAL**  
SCALE: 1/8" = 1'-0"



**LOWER LEVEL FLOOR PLAN - MECHANICAL**  
SCALE: 1/8" = 1'-0"

**GENERAL NOTES (LOWER LEVEL):**

1. ALL DUCT TO BE BELOW CEILING AND GENERALLY LOCATED BELOW UTILITY PIPING.
2. THERE IS PIPING BELOW BOILER PLASTER CEILING AS WELL AS PIPING IN CEILING INTERSTITIAL SPACE.
3. TEMPORARILY RELOCATE LIGHT FIXTURE(S) AS REQUIRED TO ACCOMMODATE INDICATED ARRANGEMENT.

**DRAWING NOTES:**

1. REFER TO PLUMBING DRAWINGS FOR ADDITIONAL WORK, THIS WORK INDICATED ON THIS DRAWING FOR COORDINATION PURPOSES.
2. COORDINATE EXACT LOCATION WITH ARCHITECTURAL AND STRUCTURAL WORK.
3. SUPPLY AIR GRILLE SHALL BE TITUS MODEL 272 RL OR APPROVED EQUAL.
4. EXHAUST AIR GRILLE SHALL BE TITUS MODEL 13 RL OR APPROVED EQUAL.
5. TRANSFER AIR GRILLE ASSEMBLY SHALL BE ONE TITUS MODEL 23 RL ON EACH SIDE OF WALL AND THE CONNECTING SHEET METAL DUCT THRU THE WALL.
6. VENT LOUVER SHALL BE RUSKIN BRICK VENT MODEL BV100 OR APPROVED EQUAL. COLOR MUST BE APPROVED BY ARCHITECT.
7. LOUVER SHALL BE RUSKIN MODEL ELF 375 D OR APPROVED EQUAL. COLOR MUST BE APPROVED BY ARCHITECT.



**RUBELING & ASSOCIATES, INC.**  
ARCHITECTURE  
INTERIOR DESIGN

401 JEFFERSON AVENUE  
TOWSON, MARYLAND 21286-5308  
410-337-2888  
FAX: 410-337-5774

MEDICAL ELECTRICAL ENGINEERS



**CENTURY ENGINEERING, INC.**  
33 WEST ROAD  
TOWSON, MARYLAND 21204  
(410) 823-9070

**PERFORMING ARTS ADDITION  
NOTRE DAME PREPARATORY SCHOOL**

TOWSON, MARYLAND

**REVISIONS:**

NO.	DESCRIPTION	DATE

**LAST REV.:**

PROJECT NO.: 98-033

DATE: NOV. 18, 1998

SCALE: AS NOTED

**TITLE:**

**PERFORMING ARTS ADDITION  
MECHANICAL**

**SHEET:**

**M  
PA-10**