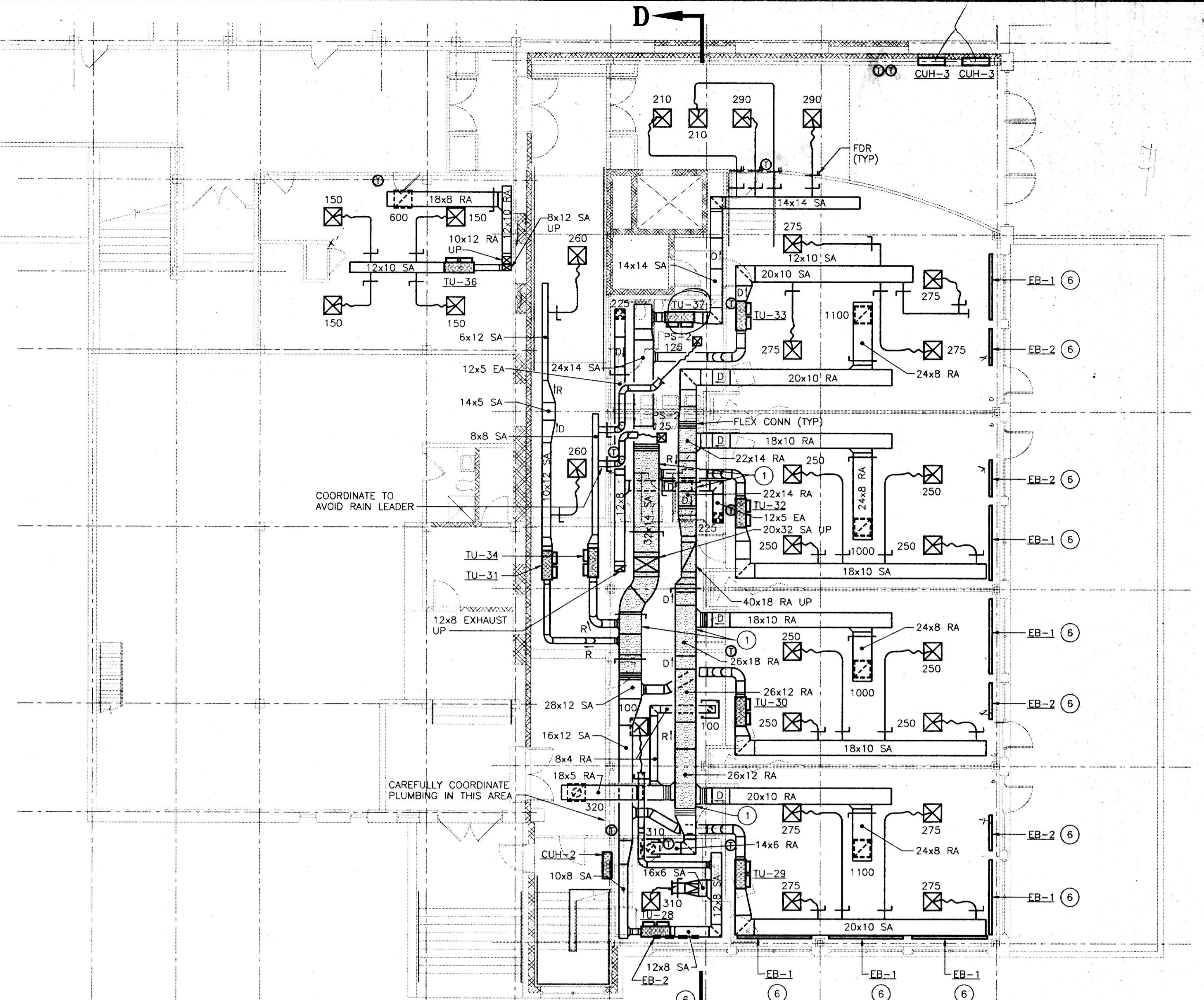


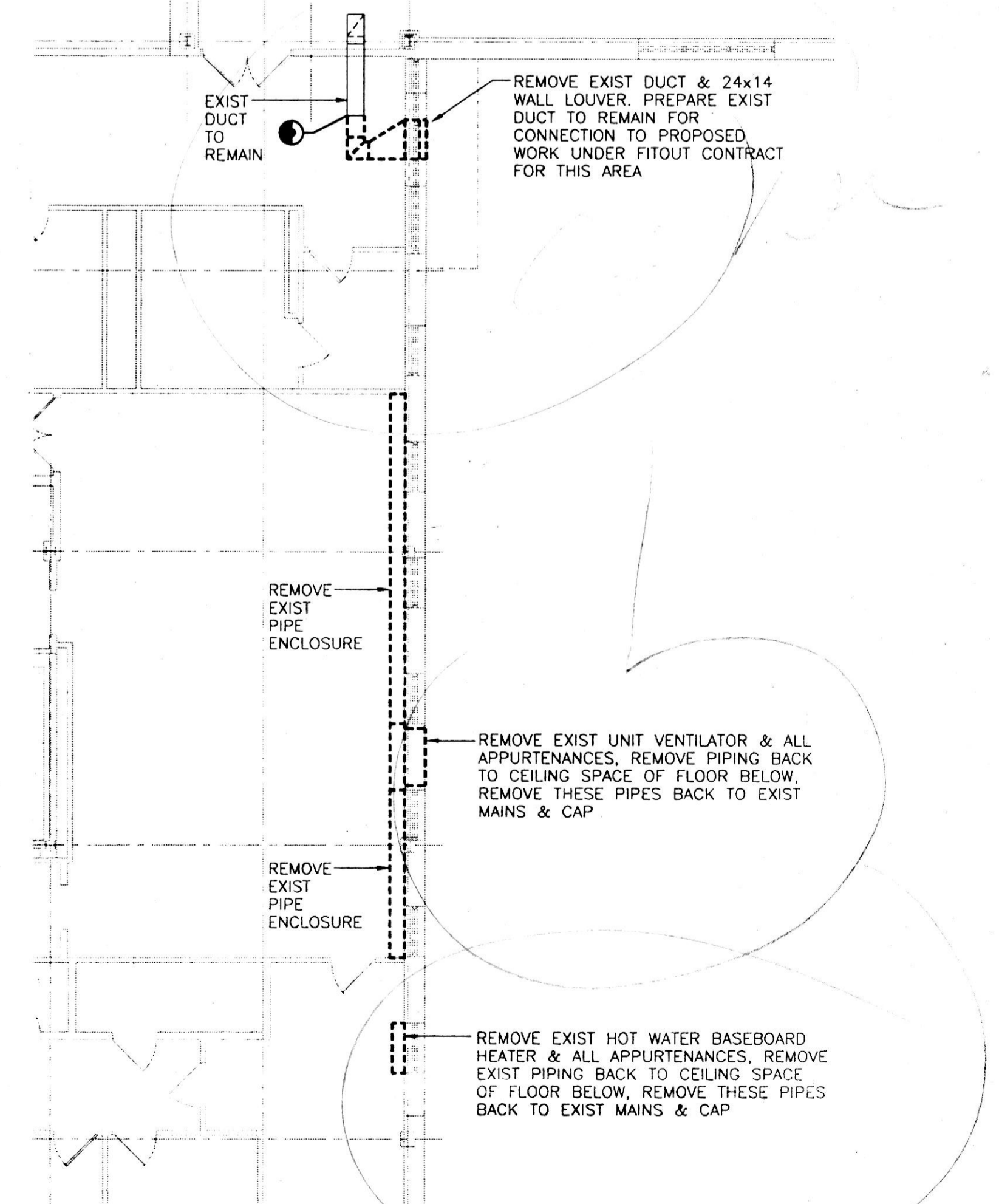
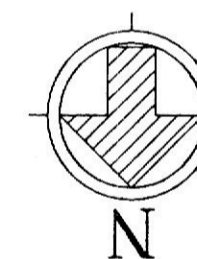
**MAIN LEVEL FLOOR PLAN - MECHANICAL**

SCALE: 1/8" = 1'-0"



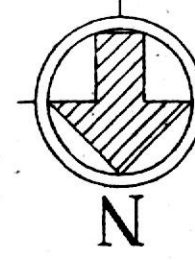
**LOWER LEVEL FLOOR PLAN - MECHANICAL**

SCALE: 1/8" = 1'-0"



**EXISTING MAIN LEVEL FLOOR PLAN DEMOLITION - MECHANICAL**

SCALE: 1/8" = 1'-0"

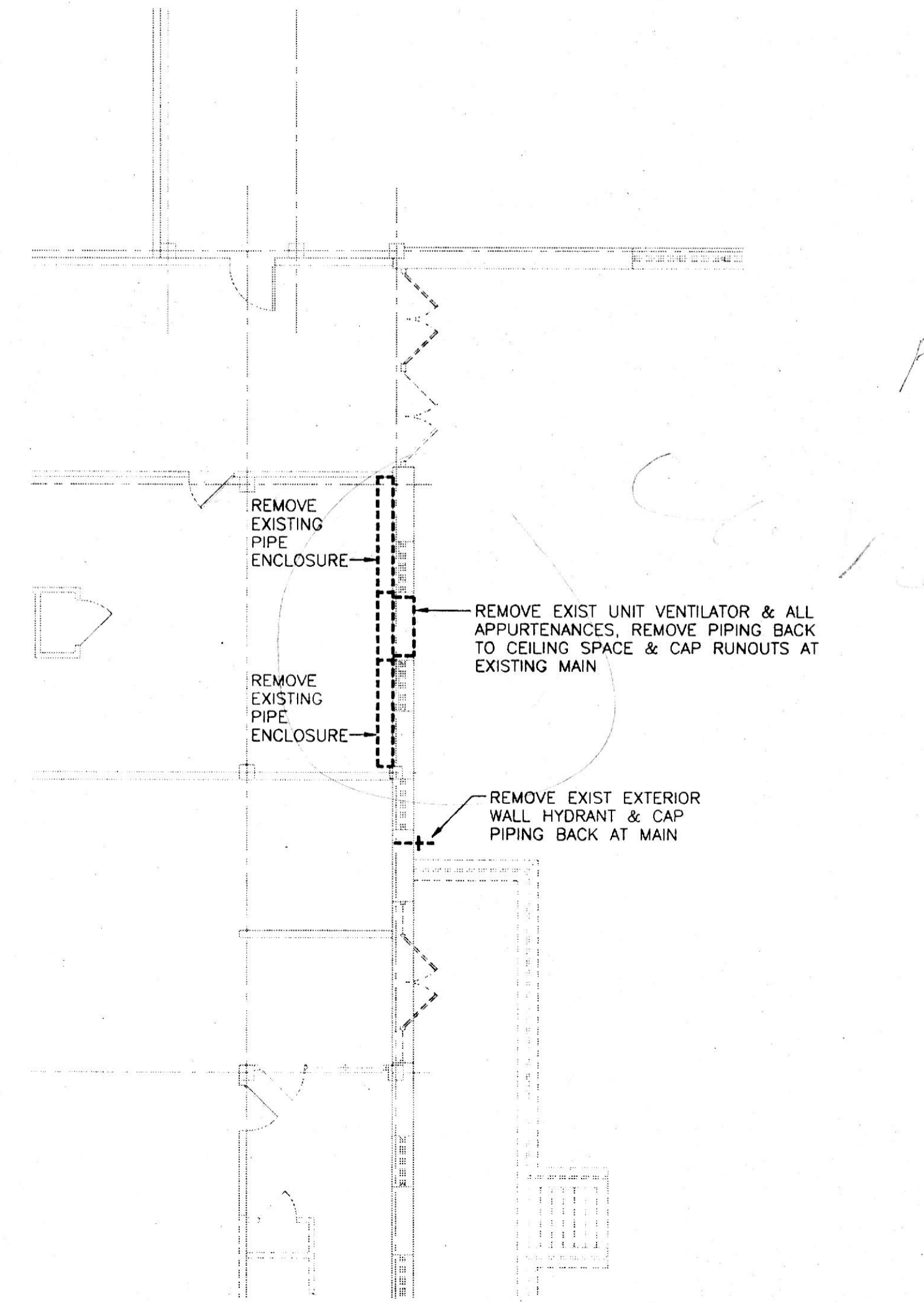


**GENERAL NOTES:**

- UNLESS NOTED OTHERWISE ALL DUCTWORK, SUPPLY AIR, RETURN AIR & EXHAUST AIR DUCTWORK FOR THIS PROJECT SHALL BE ACOUSTICALLY LINED, REFER TO SPECIFICATIONS.
- FOR ADDITIONAL GENERAL NOTES REFER TO DWG M-1.02

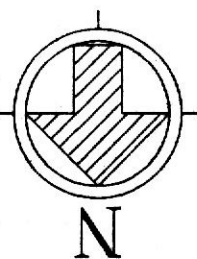
**DRAWING REFERENCE NOTES:**

- ALL DUCTWORK SHOWN SHADED SHALL BE A MINIMUM OF 14 GAUGE GALVANIZED STEEL SHEET METAL DUCT. DUCT SHALL BE ATTACHED TO BUILDING THRU VIBRATION ISOLATORS. PROVIDE FLEXIBLE CONNECTIONS AT ALL POINTS INDICATED ON DRAWING.
- 24x8 LAUNDRY EXHAUST DUCT UP TO GOOSENECK DISCHARGE ON ROOF. COORDINATE WITH PLANK CONSTRUCTION. THE GOOSENECK SHALL TERMINATE 24" ABOVE ROOF TO BOTTOM EDGE OF OUTLET. THE CURB & ANY BLOCKING SHALL BE PROVIDED UNDER THE ARCHITECTURAL DIVISION. THE GOOSENECK SHALL TERMINATE WITH 1" WIRE MESH BIRDSCREEN. THE WIRE MESH SHALL BE REMOVABLE FOR CLEANING & UNIT REMOVAL. THE GOOSENECK SHALL BE AS PER SMACNA FIGURE 5-5 OF THE 1985 FIRST EDITION 9TH PRINTING 1991 ISSUE.
- DUCT UP TO RTU, TRANSITION TO UNIT OPENING SIZE.
- 16x4 DN TO 6x6x36 LINED PLENUM IN BULKHEAD.
- 12x8 EA UP TO FAN No. 6 ON ROOF. TRANSITION TO FAN OPENING BELOW ROOF THRU FLEXIBLE CONNECTION.
- ALIGN FACE OF HEATER WITH FACE OF COLUMN FINISHED FACE. COORDINATE WITH ARCHITECT.
- FIRE DAMPER (FDR) IN VERTICAL AT FLOOR.
- 32x20 SA DOWN.
- RA PLENUM WITH SPLIT FOR 52x20 DUCT SERVING THIS LEVEL AND 40x18 DROP WITH OFFSET INTO CHASE TO LOWER LEVEL.
- 12x8 EA DUCT DOWN.



**EXISTING LOWER LEVEL FLOOR PLAN DEMOLITION - MECHANICAL**

SCALE: 1/8" = 1'-0"



8' EB1  
4' EB2

FOR HEAT BOX

**PERFORMING ARTS AND CLASSROOM ADDITIONS**  
**NOTRE DAME PREPARATORY SCHOOL**  
 TOWSON, MARYLAND

REVISIONS:

NO.	DESCRIPTION	DATE

LAST REV.:  
PROJECT NO.: 98-03  
DATE: FEB. 17, 1998  
SCALE: AS NOTED

TITLE:  
**FLOOR PLANS**  
**PERFORMING ARTS**  
**ADDITION**  
**H.V.A.C.**

SHEET: **M**

1.01

**RUBELING & ASSOCIATES, INC.**  
 ARCHITECTURE  
 INTERIOR DESIGN  
 401 JEFFERSON AVENUE  
 TOWSON, MARYLAND 21286-0909  
 410-337-2000  
 FAX: 410-337-0904  
 MECHANICAL/ELECTRICAL/PLUMBING

**CENTURY ENGINEERS**  
 32 WEST ROAD  
 TOWSON, MARYLAND 21286-0909  
 (410) 823-0900