

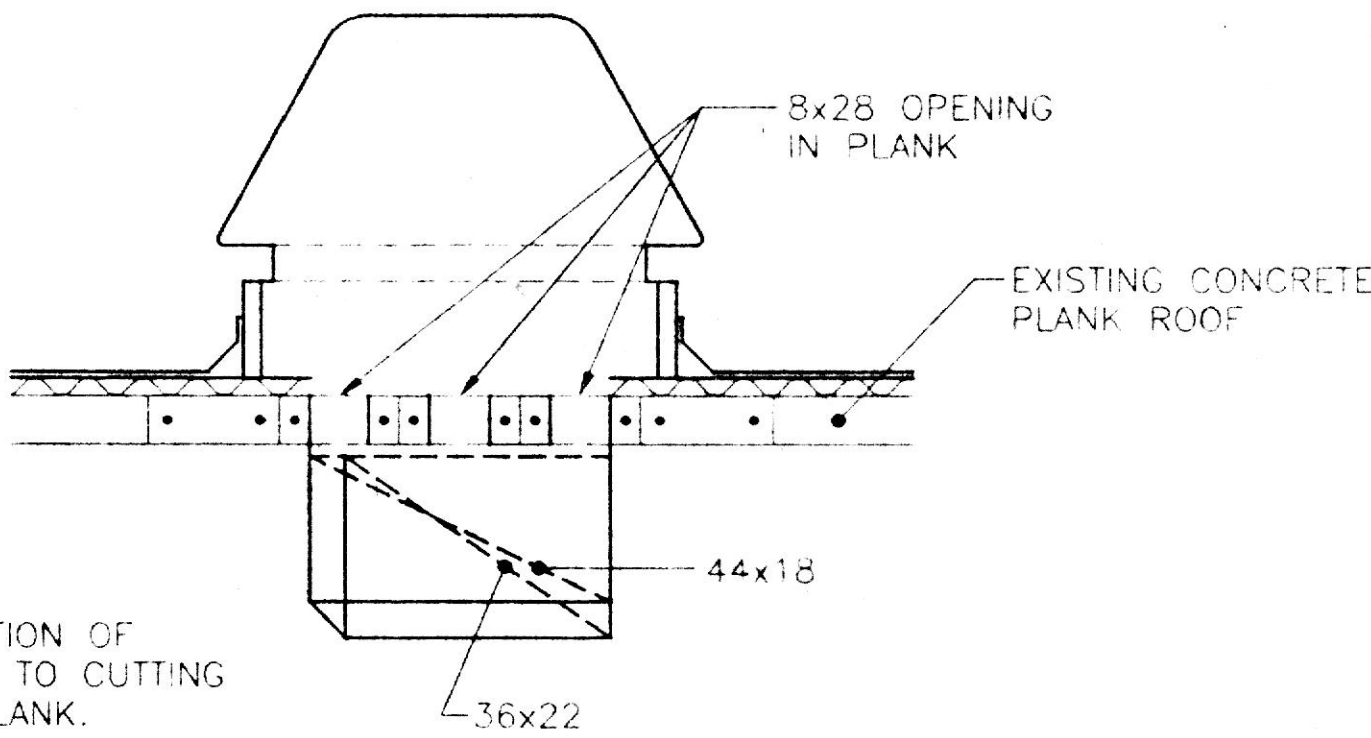
B C D E F G H J K L M N P Q R S T U

FAN SCHEDULE												
FAN NO.	AREA SERVED	DUTY	CFM	E.S.P. IN. WC	MAX FAN RPM	HP	FAN TYPE	DRIVE	MFR'S MODEL NO.	ELECTRICAL	CONTROL	NOTES
1	BOILER ROOM	SUPPLY	7500	.75	550	3	CENTRIFUGAL	BELT	GREENHECK RSF-200	208V/3ø/60Hz	ATC	
2	BOILER ROOM	RELIEF/EXHAUST	7500	.625	425	2	CENTRIFUGAL	BELT	GREENHECK LB-36	208V/3ø/60Hz	ATC	②
3	BOILER ROOM TOILET	EXHAUST	100	.375	1050	1/4	CENTRIFUGAL	BELT	GREENHECK GB-70	208V/3ø/60Hz	MANUAL	①

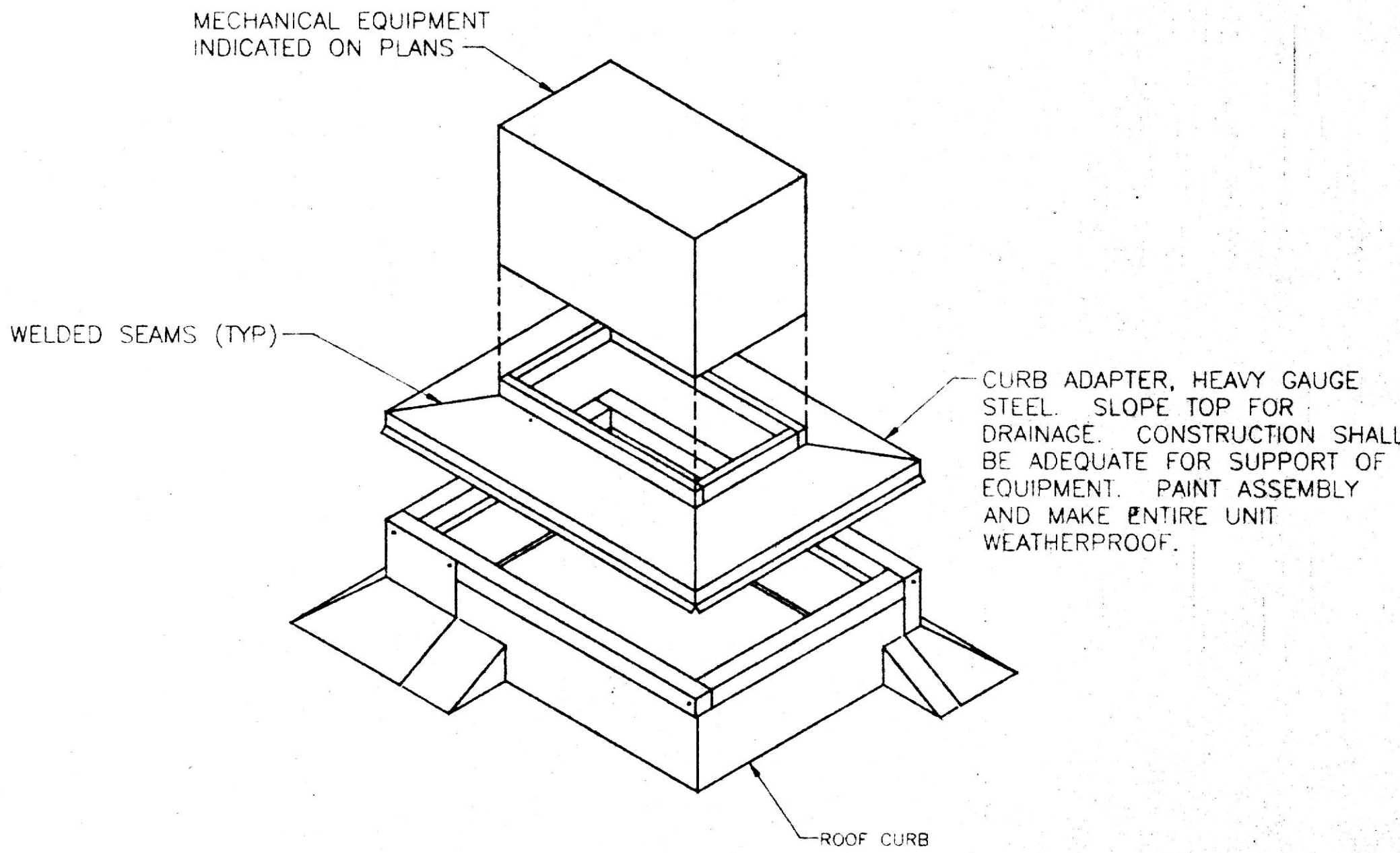
- NOTES:
- ① CONTROLLED BY WALL SWITCH WITH PILOT LIGHT. SWITCH SHALL BE LABELED "EXHAUST FAN."
 - ② ROOF CURB SHALL BE OVERSIZED. APPROX.. 50" SQUARE INSIDE DIMENSION. PROVIDE CURB ADAPTER TO COORDINATE FAN SIZE AND CURB. REFER TO DETAIL THIS SHEET.

ROOFTOP UNIT SCHEDULE																
DESIG	AREA SERVED	AIR DELIVERY	CFM	O.A. CFM	E.S.P. IN. W.G.	SUPPLY FAN HP	SUPPLY/ EXHAUST FAN HP	COOLING CAPACITY •			HEATING CAPACITY			MODEL	VOLTAGE	REMARKS
								TOTAL LOAD (MBH)	SENS. LOAD (MBH)	EVAPORATOR ENTERING AIR DB/WB	GAS FURNACE INPUT MBH	GAS FURNACE OUTPUT MBH	EAT			
RTU-2	PERFORMING ARTS	VARIABLE AIR VOLUME	12,000	5,200	3.0	20	7.5	629	409	80°F/67°F	850	680	38	TRANE MODEL SFHFC55	208V/3ø/60HZ	MAXIMUM UNIT AND ACCESSORIES WEIGHT = 9,800 POUNDS

- NOTES:
- 1. UNIT BASED ON 78°F DRY BULB/65°F WET BULB ROOM CONDITIONS
 - 2. UNIT SHALL BE INSTALLED ON INSULATED ROOF CURB. PROVIDE INSULATION INSIDE CURB AS SPECIFIED.
 - 3. ROOF CURB SHALL BE A MINIMUM 14" HIGH
 - 4. UNIT SHALL BE COMPLETE WITH FACTORY VARIABLE FREQUENCY DRIVE FOR SUPPLY FAN
 - 5. EXHAUST/RETURN FAN SHALL BE FACTORY VARIABLE FREQUENCY DRIVE
 - 6. THE GAS HEAT SHALL BE FULLY MODULATING WITH STAINLESS STEEL BURNER SECTION



SECTION A-A
SCALE: 1/2" = 1'-0"



DETAIL-OVERSIZE CURB ARRANGEMENT
NOT TO SCALE

PERFORMING ARTS ADDITION
NOTRE DAME PREPARATORY SCHOOL
TOWSON, MARYLAND

REVISIONS:

NO	DESCRIPTION	DATE

LAST REV.
PROJECT NO.: 98-033
DATE: NOV. 18, 1998
SCALE: AS NOTED

TITLE:
PERFORMING ARTS ADDITION
MECHANICAL
SCHEDULES,
DETAILS AND
SECTIONS

SHEET:
M
PA-10