

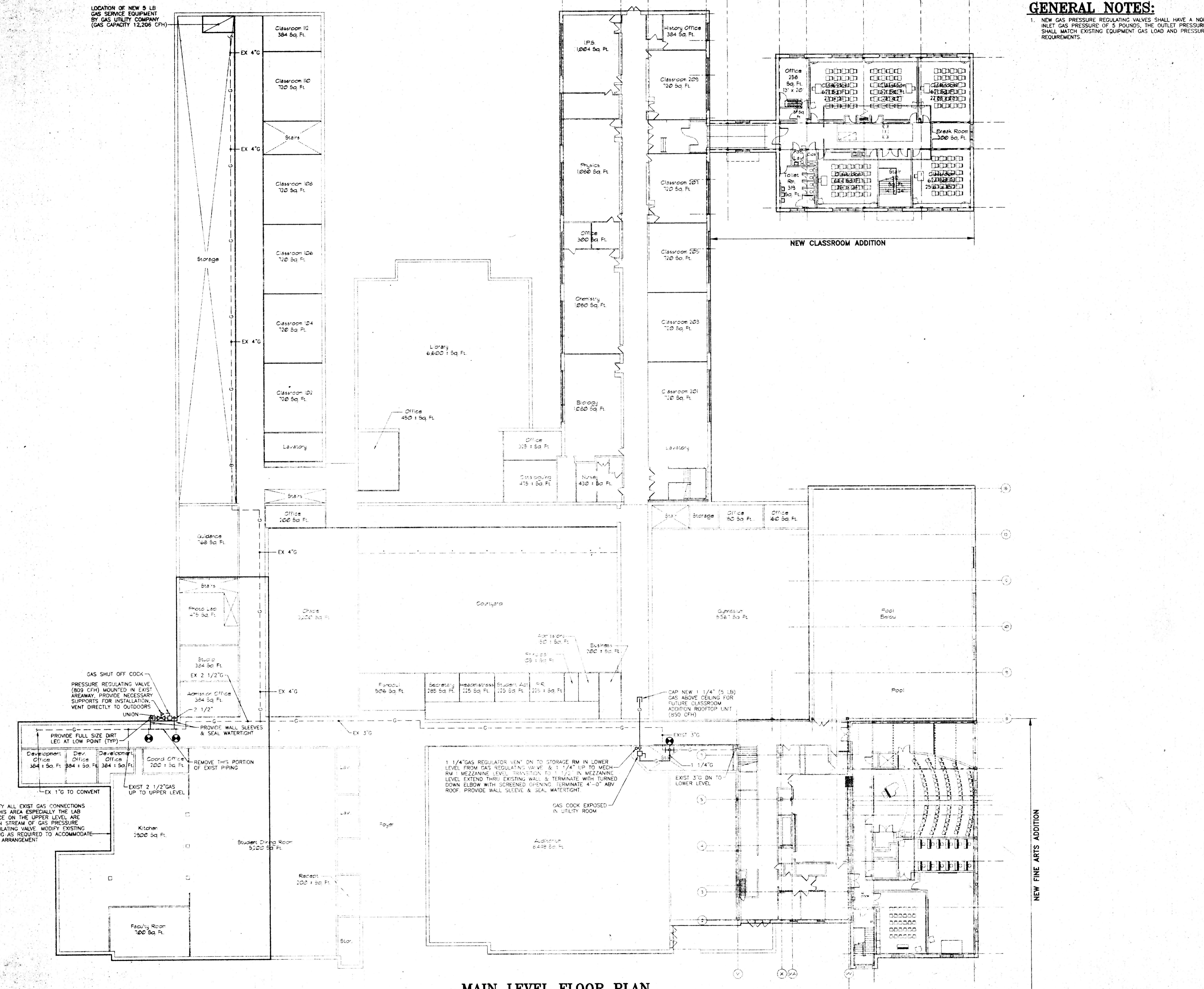
B C D E F G H J K L M N P Q R S

LOCATION OF NEW 5 LB GAS SERVICE EQUIPMENT BY GAS UTILITY COMPANY (GAS CAPACITY 12,206 CFH)

GENERAL NOTES:
 1. NEW GAS PRESSURE REGULATING VALVES SHALL HAVE A NOMINAL INLET GAS PRESSURE OF 5 POUNDS, THE OUTLET PRESSURE SHALL MATCH EXISTING EQUIPMENT GAS LOAD AND PRESSURE REQUIREMENTS.

RUBELING & ASSOCIATES, INC.
 ARCHITECTURE
 INTERIOR DESIGN
 401 JEFFERSON AVENUE
 TOWSON, MARYLAND 21286
 410-337-2800
 FAX: 410-337-2774
 MECHANICAL ELECTRICAL PLUMBING

CENTURY ENGINEERS
 38 WEST ROAD
 TOWSON, MARYLAND 21286
 (410) 823-8070



MAIN LEVEL FLOOR PLAN
 SCALE: 1/16"=1'-0"

PERFORMING ARTS ADDITION
NOTRE DAME PREPARATORY SCHOOL
 TOWSON, MARYLAND

REVISIONS:

NO.	DESCRIPTION	DATE

LAST REV:
 PROJECT NO.: 98-01
 DATE: NOV. 18, 1998
 SCALE: AS NOTED
 TITLE:
MAIN LEVEL FLOOR PLAN
GAS PIPING

SHEET:
M
 PA-10