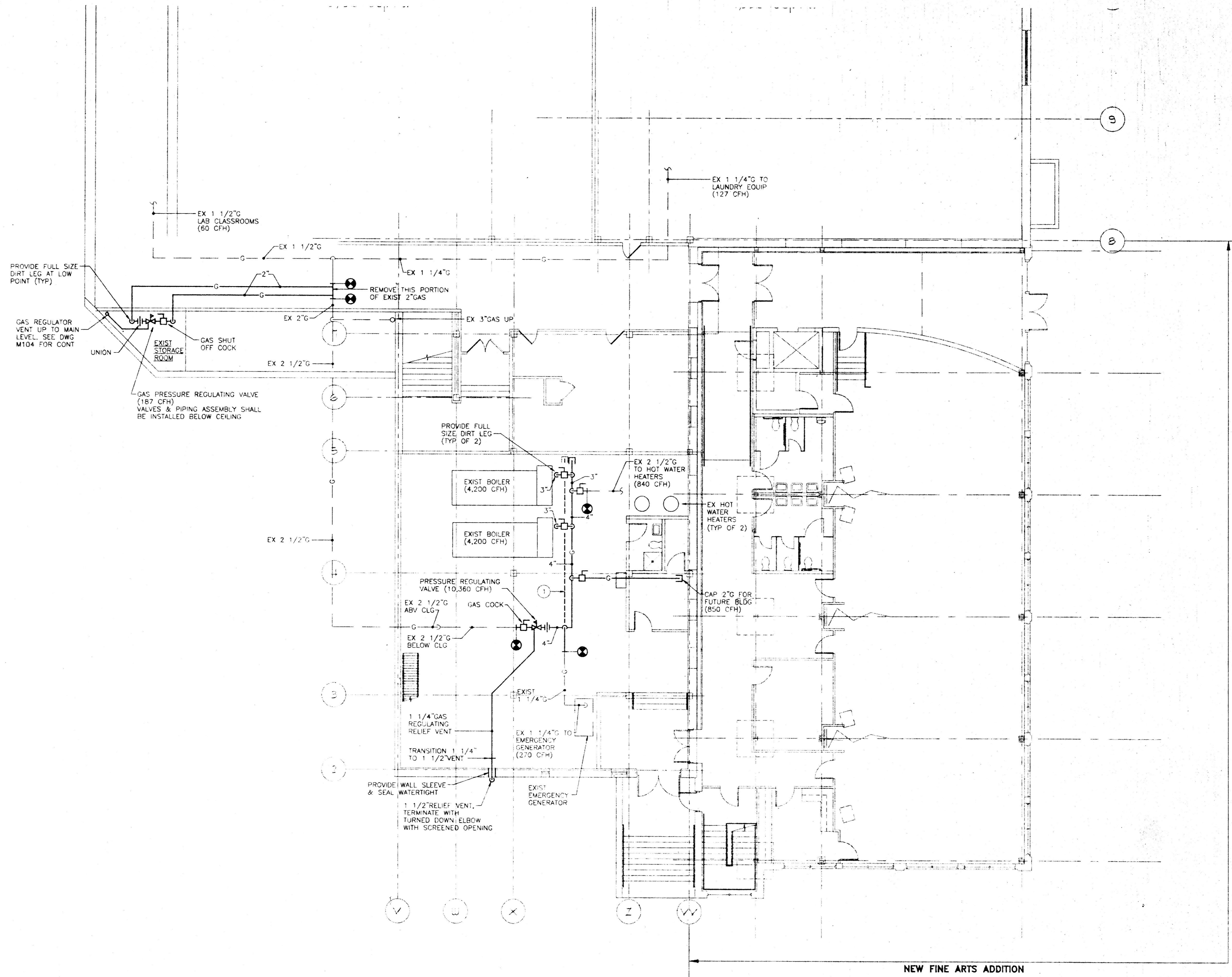


GENERAL NOTES:

1. NEW GAS PRESSURE REGULATING VALVES SHALL HAVE A NOMINAL INLET GAS PRESSURE OF 5 POUNDS. THE OUTLET PRESSURE SHALL MATCH EXISTING EQUIPMENT GAS LOAD AND PRESSURE REQUIREMENTS.

REFERENCE NOTES:

1. REMOVE EXISTING 2 1/2" GAS FROM NEW GAS PRESSURE REGULATING VALVE ASSEMBLY TO EXISTING BOILERS AND TO POINT SHOWN FOR EXISTING 2 1/2" GAS TO EXISTING HOT WATER HEATERS AND TO POINT SHOWN FOR 1 1/4" GAS TO EMERGENCY GENERATOR



LOWER LEVEL FLOOR PLAN

SCALE: 1/8"=1'-0"

RUBELING & ASSOCIATES, INC.
 ARCHITECTURE
 INTERIOR DESIGN
 401 JEFFERSON AVENUE
 TOWSON, MARYLAND 21286-5000
 410-337-2888
 FAX: 410-337-2874
 MECHANICAL ELECTRICAL ENGINEER

CENTURY ENGINEERING
 33 WEST ROAD
 TOWSON, MARYLAND 21284
 (410) 823-8070

PERFORMING ARTS ADDITION
NOTRE DAME PREPARATORY SCHOOL
 TOWSON, MARYLAND

REVISIONS:		
NO.	DESCRIPTION	DATE

LAST REV.:
 PROJECT NO.: 98-033
 DATE: NOV. 18, 1998
 SCALE: AS NOTED
 TITLE:
LOWER LEVEL FLOOR PLAN
GAS PIPING

SHEET:
M
 PA-104