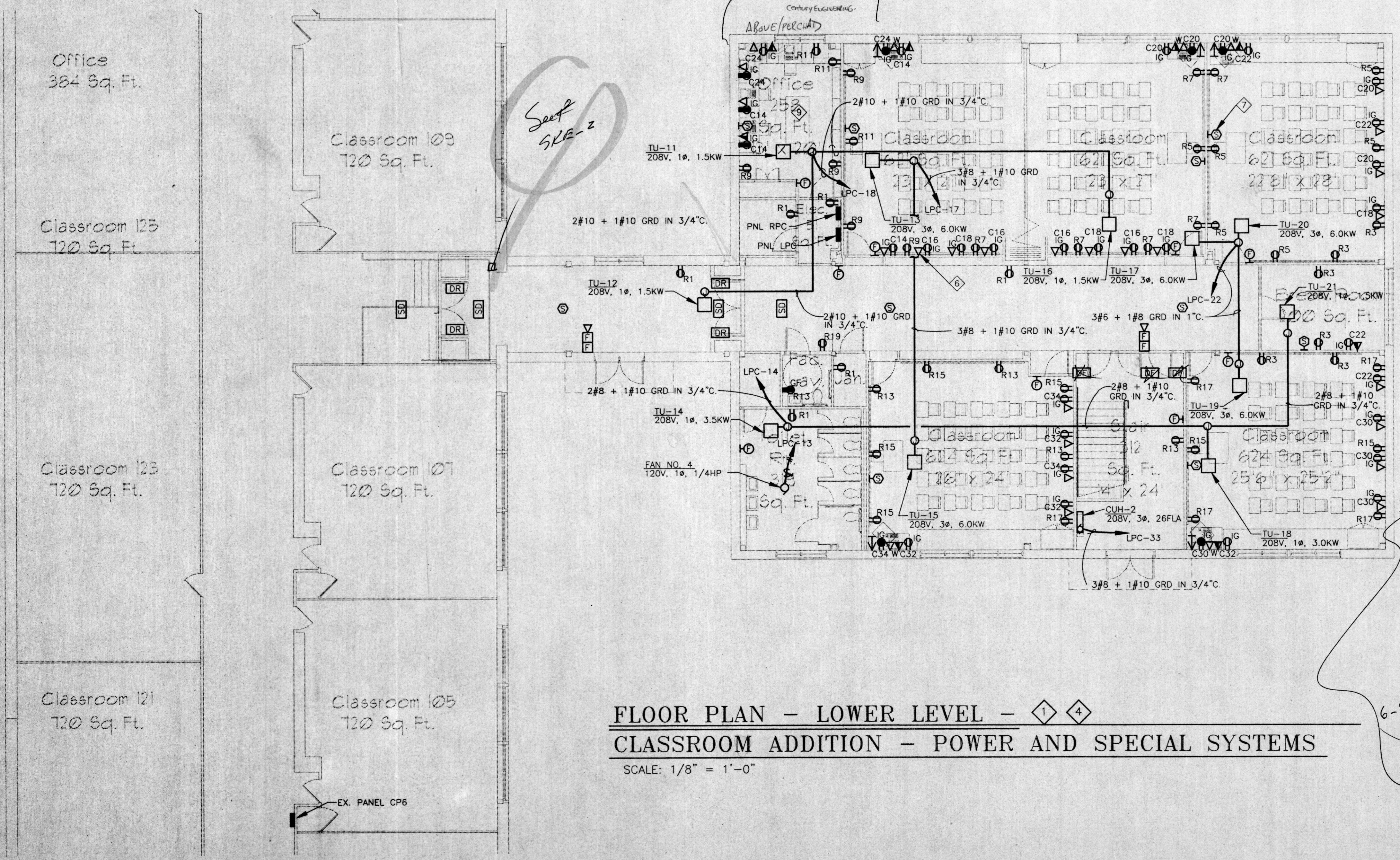


FLOOR PLAN - MAIN LEVEL - 1 3
CLASSROOM ADDITION - POWER AND SPECIAL SYSTEMS
 SCALE: 1/8" = 1'-0"



FLOOR PLAN - LOWER LEVEL - 1 4
CLASSROOM ADDITION - POWER AND SPECIAL SYSTEMS
 SCALE: 1/8" = 1'-0"

REFERENCED NOTES:

- 1 ALL CIRCUITS ON THIS PLAN INDICATED BY R# SHALL BE CONNECTED TO PANEL RPC, UNLESS NOTED OTHERWISE.
- 2 PROVIDE 3-500KCMIL + 1#3 GRD. IN 3" CONDUIT. CONDUIT SHALL BE ROUTED UNDERGROUND IN TO THE EXISTING PIPE TUNNEL UNDER THE POOL INTO THE EXISTING BOILER ROOM. CONDUIT ROUTED IN THE PIPE TUNNEL UNDER THE POOL SHALL BE PVC. SEE PART PLAN ON DWG. E4.01
- 3 ALL ISOLATED GROUND CIRCUITS ON THIS PLAN INDICATED BY C# SHALL BE CONNECTED TO EXISTING PANEL CP4, AND CONTAIN AN ISOLATED GROUND CONDUCTOR. UNLESS NOTED OTHERWISE.
- 4 ALL ISOLATED GROUND CIRCUITS ON THIS PLAN INDICATED BY C# SHALL BE CONNECTED TO EXISTING PANEL CP6, AND CONTAIN AN ISOLATED GROUND CONDUCTOR. UNLESS NOTED OTHERWISE.
- 5 PROVIDE A 240V, 3PST, 400A FUSED SAFETY SWITCH, IN A NEMA 3R ENCLOSURE. FUSED PER UNIT MANUFACTURERS RECOMMENDATION. MAKE ALL FINAL CONNECTIONS.
- 6 PROVIDE AN EMPTY 1" CONDUIT WITH PULL CORD FROM COMBINATION TELEPHONE/DATA OUTLET (18" A.F.F.) UP TO THE DATA OUTLET (7'-6" A.F.F.) MOUNTED ADJACENT TO CATV OUTLET. (TYP.)
- 7 CONNECT SPEAKERS TO EXISTING INTERCOM SYSTEM, LOCATED IN THE SECRETARIES OFFICE. PROVIDE CALL SWITCHES AND AMPLIFIERS AS REQUIRED. (TYPICAL)
- 8 RECEPTACLE SHALL BE MOUNTED IN MILLWORK. COORDINATE RECEPTACLE LOCATION IN MILLWORK WITH ARCHITECT AND CASEWORK LAYOUT.
- 9 IN THIS AREA ALL TELECOMMUNICATION/DATA OUTLETS ADJACENT TO COMPUTER TERMINALS SHALL BE MOUNTED 9" ABOVE COUNTER HEIGHT.

8/19/99
 Eliminate
 May floor Hold
 open
 ASPEN chad
 &
 Rubling
 6-Door's
 @ top
 stairs

See SKE-2 sheet 1
 Removal of Fire Alarm
 pull stations

REVISIONS:

NO.	DESCRIPTION	DATE

LAST REV.:
 PROJECT NO.: 98-033
 DATE: FEB 17, 1999
 SCALE: AS NOTED
 TITLE:
 FLOOR PLANS -
 CLASSROOM
 ADDITION -
 POWER AND
 SPECIAL SYSTEMS