

**SECOND FLOOR PART PLAN - EXISTING CONDITIONS & DEMOLITION**  
SCALE: 1/4"=1'-0"

**MECHANICAL DRAWING NOTES**

- 1 EXISTING SUPPLY AIR DUCTWORK SUSPENDED FROM STRUCTURE TO REMAIN.
- 2 EXISTING RETURN AIR DUCTWORK SUSPENDED FROM STRUCTURE TO REMAIN.
- 3 EXISTING OUTSIDE AIR DUCTWORK MOUNTED ON FLOOR TO REMAIN.
- 4 EXISTING EXHAUST AIR DUCTWORK SUSPENDED FROM STRUCTURE TO REMAIN.
- 5 EXISTING SUPPLY AIR DUCTWORK DOWN TO AIR HANDLING UNIT TO REMAIN.
- 6 EXISTING RETURN AIR DUCTWORK DOWN TO AIR HANDLING UNIT TO REMAIN.
- 7 EXISTING RETURN AIR DUCTWORK DOWN TO FIRST FLOOR CEILING BELOW TO REMAIN.
- 8 EXISTING OUTSIDE AIR DUCTWORK DOWN TO PLENUM TO REMAIN.
- 9 EXISTING EXHAUST AIR DUCTWORK DOWN THROUGH SLAB TO REMAIN.
- 10 EXISTING OUTSIDE AIR LOUVER TO REMAIN.
- 11 EXISTING RELIEF AIR LOUVER TO REMAIN.
- 12 EXISTING EXHAUST LOUVER TO REMAIN.
- 13 EXISTING VALVE IN VERTICAL TO REMAIN.
- 14 EXISTING AIR HANDLING UNIT H&V#2 SERVING AUDITORIUM MOUNTED ON 4" HOUSEKEEPING PAD TO REMAIN.
- 15 EXISTING EXHAUST FAN SUSPENDED FROM STRUCTURE TO REMAIN.
- 16 EXISTING VOLUME DAMPER TO REMAIN.
- 17 EXISTING CHILLED WATER SUPPLY PIPING SUSPENDED FROM STRUCTURE TO REMAIN.
- 18 EXISTING CHILLED WATER RETURN PIPING SUSPENDED FROM STRUCTURE TO REMAIN.
- 19 EXISTING CHILLED WATER SUPPLY AND RETURN PIPING DOWN THROUGH SLAB TO REMAIN.
- 20 EXISTING CHILLED WATER SUPPLY AND RETURN PIPING DOWN TO AIR HANDLING UNIT H&V#2 TO REMAIN.
- 21 REMOVE EXISTING SUPPLY AIR DEVICE.
- 22 REMOVE EXISTING HEATING WATER SUPPLY AND RETURN PIPING BACK TO VALVES AT AT SLAB AND CAP. INSULATE TO MATCH EXISTING.
- 23 REMOVE EXISTING THREE WAY CONTROL VALVE, CAP TAP TO CHILLED WATER SUPPLY PIPING.
- 24 REMOVE EXISTING SUPPLY AIR DUCTWORK TO POINT INDICATED.
- 25 REMOVE EXISTING OUTSIDE AIR DUCTWORK UP TO 1'-0" BELOW BULKHEAD ABOVE.
- 26 REMOVE EXISTING AIR HANDLING UNIT H&V#1 AND ALL ASSOCIATED CONTROLS, RETURN AIR MOTOR OPERATED DAMPER, OUTSIDE AIR MOTOR OPERATED DAMPER, WIRING AND SPECIALTIES. EXISTING HOUSEKEEPING PAD TO REMAIN.
- 27 REMOVE EXISTING RELIEF AIR DAMPER AND ALL CONTROLS, WIRING AND SPECIALTIES.

**ELECTRICAL DRAWING NOTES**

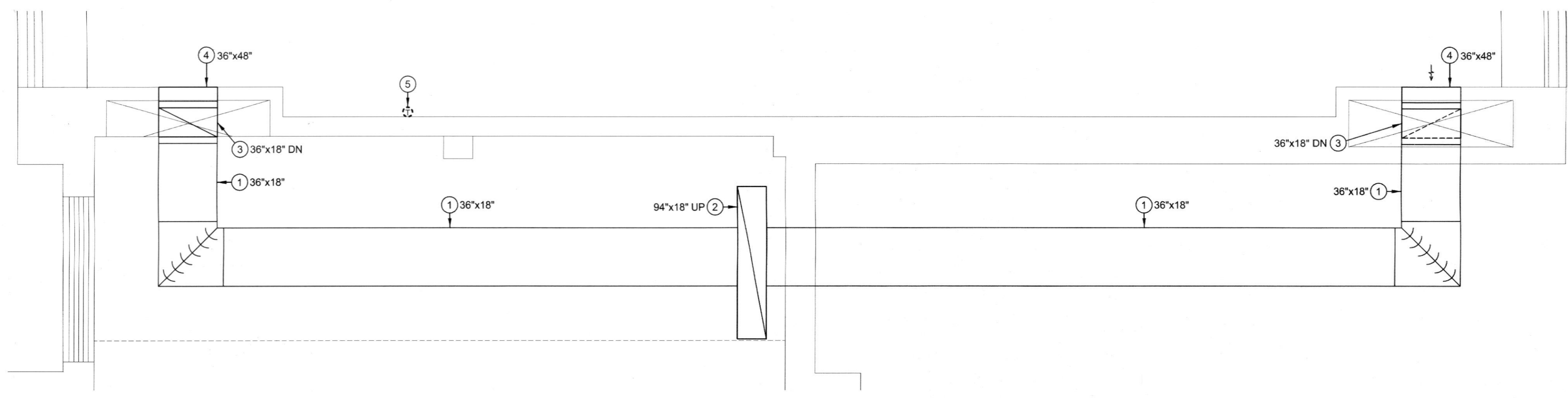
- E1 DISCONNECT EXISTING H&V UNIT BEING REMOVED. DISCONNECT AND REMOVE ALL EXISTING ELECTRICAL WORK BACK TO VOLTAGE SOURCE.
- E2 DISCONNECT AND REMOVE EXISTING COMBINATION STARTER SERVING EXISTING H&V UNIT BEING REMOVED. DISCONNECT AND REMOVE ALL EXISTING ELECTRICAL WORK BACK TO VOLTAGE SOURCE.
- E3 DISCONNECT AND REMOVE EXISTING DUCT SMOKE DETECTOR IN DUCTWORK BEING REMOVED.

**SYMBOLS LIST**

- [Symbol] DUCTWORK TO BE DEMOLISHED
- [Symbol] VOLUME DAMPER
- [Symbol] MOTOR OPERATED DAMPER
- [Symbol] FLEXIBLE CONNECTION
- [Symbol] SOUND LINED DUCTWORK
- [Symbol] DUCTWORK TRANSITIONS
- [Symbol] TURNING VANES
- [Symbol] RADIUS ELBOW
- [Symbol] SUPPLY DUCT DOWN
- [Symbol] SUPPLY DUCT UP
- [Symbol] RETURN DUCT DOWN
- [Symbol] RETURN DUCT UP
- [Symbol] EXHAUST DUCT DOWN
- [Symbol] DIRECTION OF AIR FLOW
- [Symbol] CONNECT TO EXISTING SYMBOL
- [Symbol] THERMOSTAT
- [Symbol] CUBIC FEET PER MINUTE (CFM)
- [Symbol] DIAMETER
- [Symbol] DRAWING NOTE
- [Symbol] REVISION SYMBOL
- [Symbol] ADD ALTERNATE DRAWING NOTE
- [Symbol] CHILLED WATER SUPPLY PIPE (CHS)
- [Symbol] CHILLED WATER RETURN PIPE (CHR)
- [Symbol] HEATING WATER SUPPLY PIPE (HS)
- [Symbol] HEATING WATER RETURN PIPE (HR)
- [Symbol] PIPE SLEEVE / PIPE GUIDE
- [Symbol] WATERTIGHT PIPE SLEEVE
- [Symbol] PIPE DOWN
- [Symbol] PIPE UP
- [Symbol] DIRECTION OF LIQUID FLOW
- [Symbol] FLEXIBLE PIPE CONNECTION
- [Symbol] STRAINER
- [Symbol] PRESSURE GAUGE
- [Symbol] THERMOMETER
- [Symbol] FLOW METER FITTING
- [Symbol] UNION
- [Symbol] BALL VALVE
- [Symbol] BALL VALVE WITH MEMORY
- [Symbol] GATE VALVE
- [Symbol] THREE WAY CONTROL VALVE
- [Symbol] TWO WAY CONTROL VALVE
- [Symbol] CHECK VALVE
- [Symbol] BALANCING VALVE
- [Symbol] BUTTERFLY VALVE
- [Symbol] BUTTERFLY VALVE WITH MEMORY STOP
- [Symbol] FLOOR DRAIN
- [Symbol] ROOF DRAIN
- [Symbol] MAGNETIC STARTER, COMBINATION TYPE; WALL MOUNT AT 6'-0" TO TOP.
- [Symbol] MOTOR-SINGLE PHASE, THREE PHASE, HORSEPOWER AS NOTED
- [Symbol] PANELBOARD 208/120 VOLTS; WALL MOUNT AT 6'-6" TO TOP.
- [Symbol] DUCT SMOKE DETECTOR

**ABBREVIATIONS LIST**

- A.F.F. ABOVE FINISHED FLOOR
- A.H.U.-# AIR HANDLING UNIT
- A.N.S.I. AMERICAN NATIONAL STANDARDS INSTITUTE
- ASHRAE AMERICAN SOCIETY OF HEATING, REFRIGERATION, AND AIR-CONDITIONING ENGINEERS
- A.S.T.M. AMERICAN SOCIETY FOR TESTING AND MATERIALS
- A.T.C. AUTOMATIC TEMPERATURE CONTROL
- B.A.S. BUILDING AUTOMATION SYSTEM
- B.T.U.H. BRITISH THERMAL UNIT PER HOUR
- C.C.# COOLING COIL
- C.F.M. CUBIC FEET PER MINUTE
- db DRY BULB
- E.A.T. ENTERING AIR TEMPERATURE
- E.S.P. EXTERNAL STATIC PRESSURE
- E.W.T. ENTERING WATER TEMPERATURE
- EX. EXISTING
- F.D. FLOOR DRAIN
- FT. FOOT
- G.P.M. GALLONS PER MINUTE
- H.P. HORSEPOWER
- H.V.A.C. HEATING, VENTILATION, AND AIR-CONDITIONING
- HZ. HERTZ
- IN. INCHES
- L.A.T. LEAVING AIR TEMPERATURE
- L.W.T. LEAVING WATER TEMPERATURE
- M.B.H. THOUSAND BRITISH THERMAL UNITS PER HOUR
- M.O.D. MOTOR OPERATED DAMPER
- O.A. OUTSIDE AIR
- P.D. PRESSURE DIFFERENTIAL
- P.S.I. POUNDS PER SQUARE INCH
- R.A. RETURN AIR
- R.D. ROOF DRAIN
- R.P.M. REVOLUTIONS PER MINUTE
- RX. REMOVE EXISTING
- S.A. SUPPLY AIR
- S.F.# SUPPLY AIR FAN
- SMACNA SHEET METAL AND AIR-CONDITIONING NATIONAL ASSOCIATION
- S.P. STATIC PRESSURE
- TYP. TYPICAL
- V. VOLTS
- V.A.V.# VARIABLE AIR VOLUME
- W.C. WATER COLUMN
- wb WET BULB



**FIRST FLOOR PART PLAN - EXISTING CONDITIONS & DEMOLITION - HVAC**  
SCALE: 1/4"=1'-0"

**DRAWING NOTES**

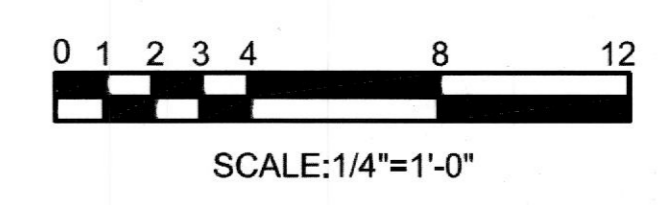
- 1 EXISTING RETURN AIR DUCTWORK MOUNTED ABOVE FIRST FLOOR CEILING TO REMAIN.
- 2 EXISTING RETURN AIR DUCTWORK UP TO SECOND FLOOR MECHANICAL ROOM. REFER TO PART PLAN ON THIS SHEET FOR CONTINUATION.
- 3 EXISTING RETURN AIR DUCTWORK DOWN IN CHASE TO REMAIN.
- 4 REMOVE RETURN AIR GRILLE MOUNTED IN WALL.
- 5 REMOVE EXISTING THERMOSTAT AND ALL ASSOCIATED CONTROL WIRING SERVING AIR HANDLING UNIT H&V#1.

**GENERAL NOTES**

- ALL WORK SHOWN LIGHT AND SOLID ON THIS DRAWING SHALL BE CONSIDERED EXISTING UNLESS INDICATED OTHERWISE.
- ALL WORK SHOWN DARK AND DASHED ON THIS DRAWING SHALL BE CONSIDERED DEMOLITION UNLESS INDICATED OTHERWISE.
- ALL EXISTING LOW PRESSURE SUPPLY AND RETURN AIR DUCTWORK SHALL BE THOROUGHLY CLEANED. REFER TO SPECIFICATIONS FOR ADDITIONAL INFORMATION.

**ADD ALTERNATE NOTE:**

- CONTRACTOR SHALL PROVIDE A PRICE TO REMOVE EXISTING SUPPLY AIR DUCTWORK INDICATED WITH [Symbol] AND REPLACE WITH FABRIC DUCT SYSTEM AS SHOWN ON SHEET ME201.



**KEY PLAN**  
NO SCALE

**REVISIONS:**

NO.	DESCRIPTION	DATE
1	ISSUED FOR PERMIT	06/15/17

**LAST REV.:**  
PROJECT NO.: 16076B  
DATE: 06/15/17  
SCALE: 1/4"=1'-0"

**TITLE:**  
FIRST & SECOND FLOOR PART PLANS - EXISTING CONDITIONS & DEMOLITION - HVAC & POWER  
SHEET:

ME  
101