

**SYMBOLS LIST**

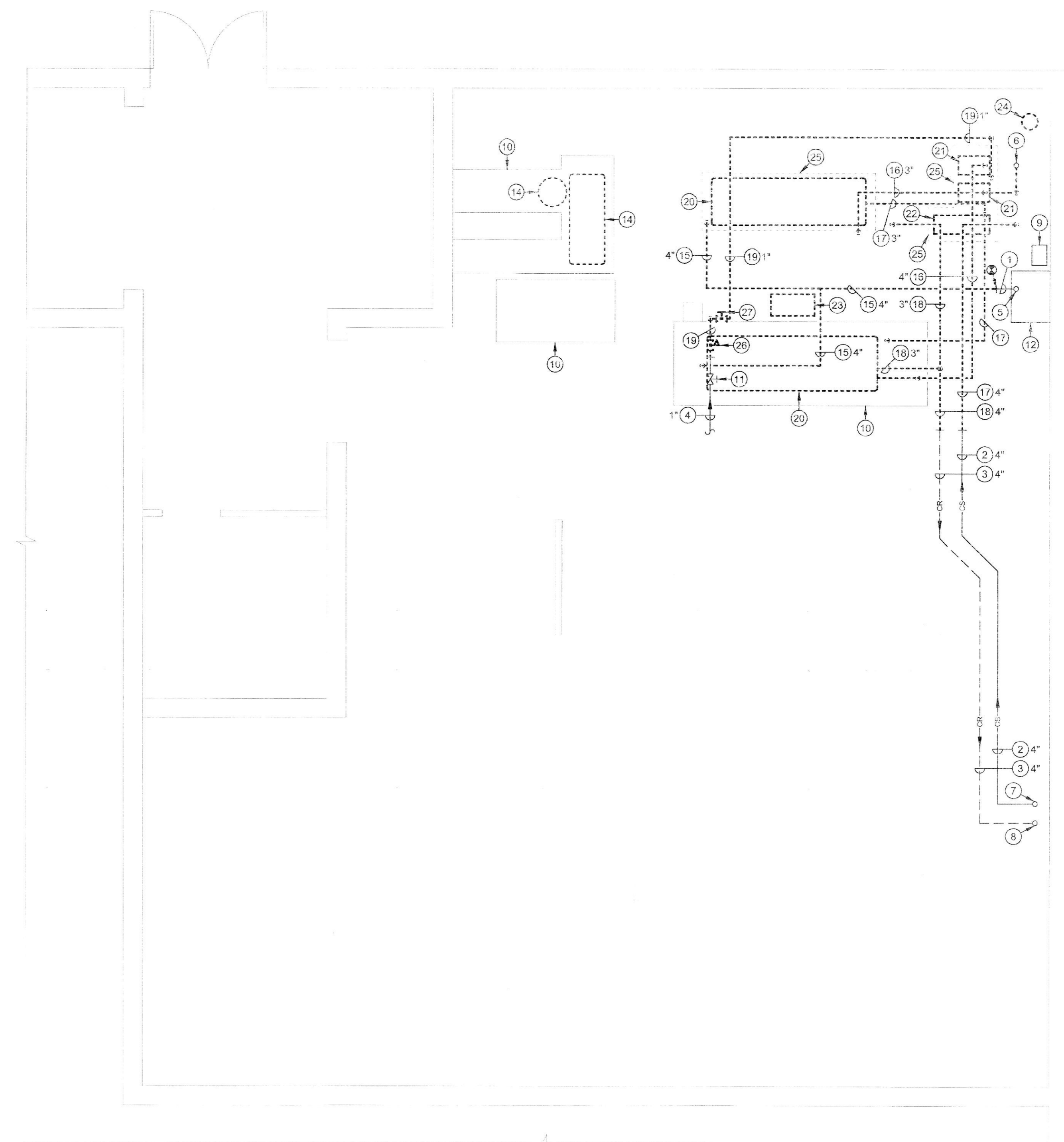
- ⊕ CONNECT TO EXISTING SYMBOL
- ∅ DIAMETER
- ① DRAWING NOTE
- PIPING TO BE DEMOLISHED
- COLD WATER PIPE (CW)
- CHILLED WATER SUPPLY PIPE (CHS)
- CHILLED WATER RETURN PIPE (CHR)
- CONDENSER WATER SUPPLY PIPE (CS)
- CONDENSER WATER RETURN PIPE (CR)
- PIPE DOWN
- PIPE UP
- DIRECTION OF LIQUID FLOW
- FLEXIBLE PIPE CONNECTION
- STRAINER
- PRESSURE GAUGE
- THERMOMETER
- FLOW SWITCH
- UNION
- BALL VALVE
- GATE VALVE
- THREE WAY CONTROL VALVE
- CHECK VALVE
- PRESSURE REDUCING VALVE
- BUTTERFLY VALVE
- BACKFLOW PREVENTER

**ABBREVIATIONS LIST**

- A.S. AIR SEPARATOR
- A.T.C. AUTOMATIC TEMPERATURE CONTROL
- B.A.S. BUILDING AUTOMATION SYSTEM
- B.F.P. BACKFLOW PREVENTER
- C.T.-# COOLING TOWER
- CH-# CHILLER
- E.T. EXPANSION TANK
- E.W.T. ENTERING WATER TEMPERATURE
- EX. EXISTING
- G.P.M. GALLONS PER MINUTE
- H.P. HORSEPOWER
- H.V.A.C. HEATING, VENTILATION, AND AIR-CONDITIONING
- HZ. HERTZ
- IN. INCHES
- KW. KILOWATT
- L.W.T. LEAVING WATER TEMPERATURE
- LBS. POUNDS
- M.B.H. THOUSAND BRITISH THERMAL UNITS PER HOUR
- N.C. NOISE CRITERIA
- N.F.P.A. NATIONAL FIRE PROTECTION ASSOCIATION
- P.S.I. POUNDS PER SQUARE INCH
- R.P.M. REVOLUTIONS PER MINUTE
- RX. REMOVE EXISTING
- V. VOLTS
- V.F.D. VARIABLE FREQUENCY DRIVE
- W.C. WATER COLUMN
- wb WET BULD

**DRAWING NOTES**

- 1 EXISTING CHILLED WATER SUPPLY PIPING TO REMAIN
- 2 EXISTING CONDENSER WATER SUPPLY PIPING TO REMAIN
- 3 EXISTING CONDENSER WATER RETURN PIPING TO REMAIN
- 4 EXISTING CHILLED WATER SYSTEM MAKE-UP WATER PIPING TO REMAIN
- 5 EXISTING 4" CHILLED WATER SUPPLY PIPING UP TO REMAIN
- 6 EXISTING 4" CHILLED WATER RETURN PIPING UP TO REMAIN
- 7 EXISTING 4" CONDENSER WATER SUPPLY PIPING UP TO REMAIN
- 8 EXISTING 4" CONDENSER WATER RETURN PIPING UP TO REMAIN
- 9 EXISTING CONDENSER WATER CHEMICAL TREATMENT SYSTEM INCLUDING PIPING TO REMAIN
- 10 EXISTING CONCRETE HOUSEKEEPING PAD TO REMAIN
- 11 EXISTING GATE VALVE TO REMAIN
- 12 EXISTING PNEUMATIC CONTROL BOARD TO REMAIN. DISCONNECT COMPONENTS RELATED TO CHILLED AND CONDENSER WATER SYSTEM.
- 13 EXISTING COOLING TOWER MOUNTED ON ROOF ABOVE TO REMAIN. REMOVE EXISTING 20 HP CONDENSER FAN MOTOR.
- 14 RELOCATE EXISTING AIR COMPRESSOR AND ALL ASSOCIATED PIPING AS NECESSARY. REFER TO NEW WORK PLAN FOR NEW LOCATION.
- 15 REMOVE EXISTING CHILLED WATER SUPPLY PIPING TO POINT INDICATED.
- 16 REMOVE EXISTING CHILLED WATER RETURN PIPING TO POINT INDICATED.
- 17 REMOVE EXISTING CONDENSER WATER SUPPLY PIPING TO POINT INDICATED.
- 18 REMOVE EXISTING CONDENSER WATER RETURN PIPING TO POINT INDICATED.
- 19 REMOVE EXISTING CHILLED WATER SYSTEM MAKE-UP WATER PIPING TO POINT INDICATED.
- 20 REMOVE EXISTING WATER-COOLED CHILLER AND ALL ASSOCIATED PIPING, SPECIALTIES AND CONTROLS.
- 21 REMOVE EXISTING CHILLED WATER PUMP AND ALL ASSOCIATED PIPING, SPECIALTIES AND CONTROLS.
- 22 REMOVE EXISTING CONDENSER WATER PUMP AND ALL ASSOCIATED PIPING, SPECIALTIES AND CONTROLS.
- 23 REMOVE EXISTING CHILLED WATER SYSTEM EXPANSION TANK MOUNTED FROM STRUCTURE ABOVE AND ALL ASSOCIATED PIPING AND SUPPORTS.
- 24 REMOVE EXISTING CHILLED WATER CHEMICAL TREATMENT SYSTEM IN ITS ENTIRETY.
- 25 REMOVE EXISTING HOUSEKEEPING PAD.
- 26 REMOVE EXISTING PRESSURE REDUCING VALVE.
- 27 REMOVE EXISTING GATE VALVE.



**PARTIAL MECHANICAL ROOM PLAN - EXISTING CONDITIONS & DEMOLITION - HVAC**  
SCALE: 1/4"=1'-0"

ENGINEER'S SEAL  
ENGINEER'S CERTIFICATION STATEMENT  
I certify that these documents were prepared or approved by me, and that I am a duly licensed engineer under the laws of the State of Maryland, license number 22691, expiration date, May 28, 2016.

**NOTRE DAME PREPARATORY SCHOOL - CHILLER REPLACEMENT**  
815 HAMPTON LANE  
TOWSON, MD 21286

| REVISIONS |             |      |
|-----------|-------------|------|
| NO.       | DESCRIPTION | DATE |
|           |             |      |
|           |             |      |
|           |             |      |
|           |             |      |

LAST REV.:  
PROJECT NO.: 14091A  
DATE: 3/17/2015  
SCALE: 1/4"=1'-0"  
TITLE: PARTIAL MECHANICAL ROOM PLAN - EXISTING CONDITIONS & DEMOLITION - HVAC

SHEET:  
**M**  
**101**

