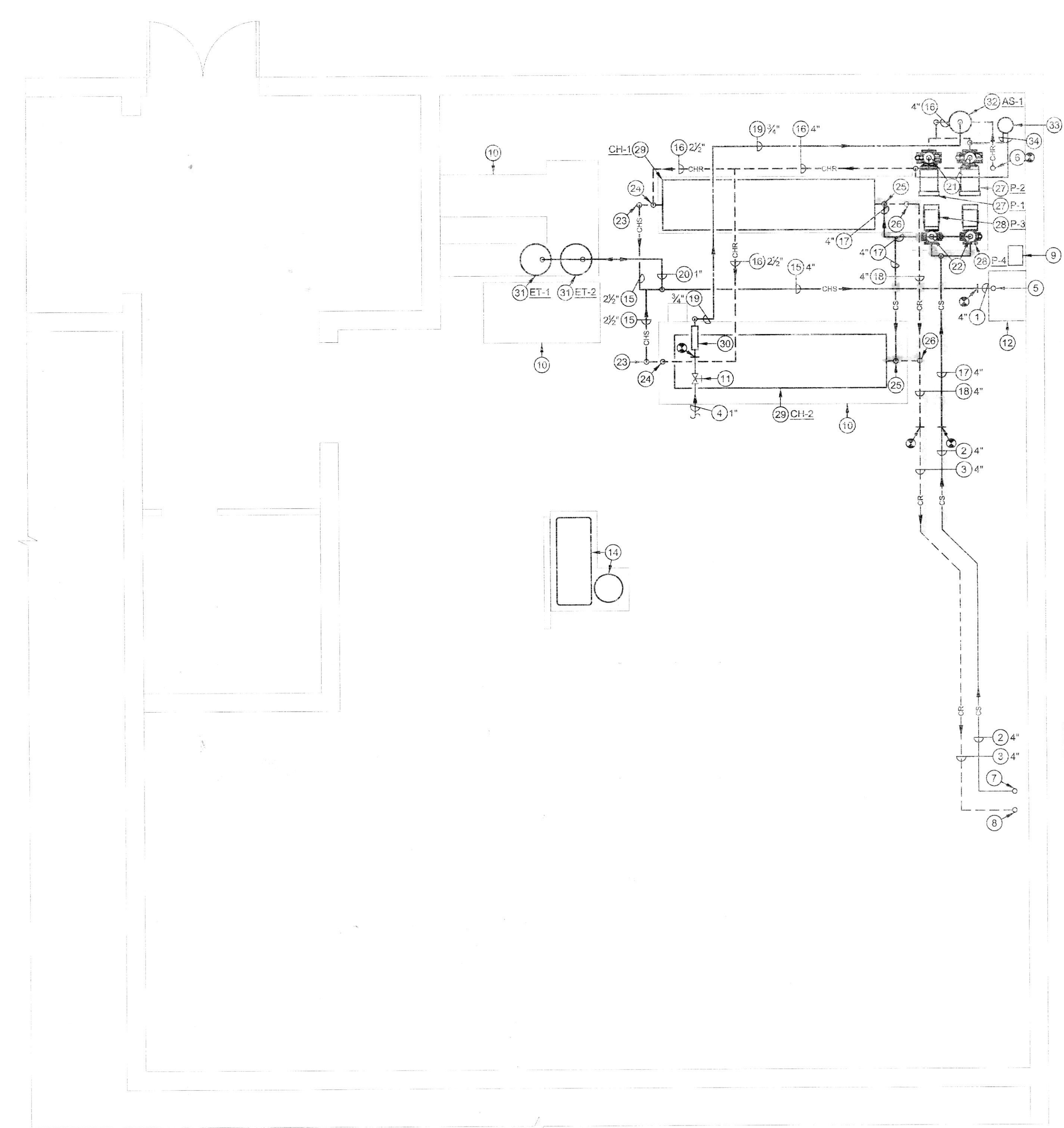


DRAWING NOTES

- 1 EXISTING CHILLED WATER SUPPLY PIPING TO REMAIN.
- 2 EXISTING CONDENSER WATER SUPPLY PIPING TO REMAIN.
- 3 EXISTING CONDENSER WATER RETURN PIPING TO REMAIN.
- 4 EXISTING CHILLED WATER SYSTEM MAKE-UP WATER PIPING TO REMAIN.
- 5 EXISTING 4" CHILLED WATER SUPPLY PIPING UP TO REMAIN.
- 6 EXISTING 4" CHILLED WATER RETURN PIPING UP TO REMAIN.
- 7 EXISTING 4" CONDENSER WATER SUPPLY PIPING UP TO REMAIN.
- 8 EXISTING 4" CONDENSER WATER RETURN PIPING UP TO REMAIN.
- 9 EXISTING CONDENSER WATER CHEMICAL TREATMENT SYSTEM TO REMAIN. RECONNECT TO NEW CONDENSER WATER PIPING SYSTEM AS INDICATED ON CONDENSER/CHILLED WATER SYSTEM SCHEMATIC ON SHEET M301.
- 10 EXISTING CONCRETE HOUSEKEEPING PAD TO REMAIN.
- 11 EXISTING GATE VALVE TO REMAIN.
- 12 EXISTING PNEUMATIC CONTROL BOARD TO REMAIN.
- 13 EXISTING COOLING TOWER MOUNTED ON ROOF ABOVE TO REMAIN. FURNISH AND INSTALL 20 HP INVERTER DUTY CONDENSER FAN MOTOR WITH GROUNDING RING AND INTERLOCK WITH VARIABLE FREQUENCY DRIVE.
- 14 RELOCATED AIR COMPRESSOR MOUNTED ON 4" CONCRETE HOUSEKEEPING PAD. RECONNECT PIPING AS NECESSARY.
- 15 CHILLED WATER SUPPLY PIPING SUPPORTED FROM STRUCTURE ABOVE.
- 16 CHILLED WATER RETURN PIPING SUPPORTED FROM STRUCTURE ABOVE.
- 17 CONDENSER WATER SUPPLY PIPING SUPPORTED FROM STRUCTURE ABOVE.
- 18 CONDENSER WATER RETURN PIPING SUPPORTED FROM STRUCTURE ABOVE.
- 19 CHILLED WATER SYSTEM MAKE-UP WATER PIPING SUPPORTED FROM STRUCTURE ABOVE.
- 20 CHILLED WATER EXPANSION PIPING SUPPORTED FROM STRUCTURE ABOVE.
- 21 4" CHILLED WATER RETURN PIPING DOWN TO CHILLED WATER PUMP.
- 22 4" CONDENSER WATER SUPPLY PIPING DOWN TO CONDENSER WATER PUMP.
- 23 2 1/2" CHILLED WATER SUPPLY PIPING DOWN TO CHILLER.
- 24 2 1/2" CHILLED WATER RETURN PIPING DOWN TO CHILLER.
- 25 4" CONDENSER WATER SUPPLY PIPING DOWN TO CHILLER.
- 26 4" CONDENSER WATER RETURN PIPING DOWN TO CHILLER.
- 27 END SUCTION CHILLED WATER PUMP MOUNTED ON 4" CONCRETE HOUSEKEEPING PAD. REFER TO DETAIL AND SCHEDULE ON SHEET M301.
- 28 END SUCTION CONDENSER WATER PUMP MOUNTED ON 4" CONCRETE HOUSEKEEPING PAD. REFER TO DETAIL AND SCHEDULE ON SHEET M301.
- 29 PACKAGED WATER-COOLED SCROLL CHILLER FURNISHED BY THE OWNER AND INSTALLED BY THE CONTRACTOR. REFER TO DETAIL AND SCHEDULE ON SHEET M301.
- 30 CHILLED WATER SYSTEM MAKE-UP WATER ASSEMBLY. REFER TO DETAIL ON SHEET M301.
- 31 CHILLED WATER SYSTEM EXPANSION TANK. REFER TO DETAIL AND SCHEDULE ON SHEET M301.
- 32 CHILLED WATER SYSTEM AIR/DIRT SEPARATOR SUPPORTED FROM STRUCTURE ABOVE. REFER TO DETAIL AND SCHEDULE ON SHEET M301.
- 33 CHILLED WATER CHEMICAL TREATMENT SHOT FEEDER MOUNTED ON 4" CONCRETE HOUSEKEEPING PAD.
- 34 CHILLED WATER CHEMICAL TREATMENT PIPING SUPPORTED FROM STRUCTURE ABOVE.
- 35 VARIABLE FREQUENCY DRIVE (VFD) MOUNTED ON EXISTING STRUCTURAL STEEL. REFER TO SCHEDULE ON SHEET M301.



- chilled
 - condenser
 - make up water
 Chemical feed
 Expansion Tanks

PARTIAL MECHANICAL ROOM PLAN - EXISTING CONDITIONS & NEW WORK - HVAC

SCALE: 1/4"=1'-0"

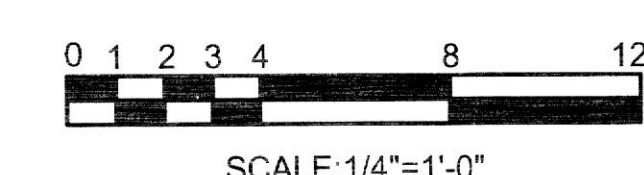


**NOTRE DAME PREPARATORY SCHOOL -
 CHILLER REPLACEMENT**
 815 HAMPTON LANE
 TOWSON, MD 21286

NO.	DESCRIPTION	DATE

LAST REV.:
 PROJECT NO.: 14091A
 DATE: 3/17/2015
 SCALE: 1/4"=1'-0"
 TITLE:
 PARTIAL
 MECHANICAL ROOM
 PLAN - EXISTING
 CONDITIONS & NEW
 WORK - HVAC

SHEET:
M
201



SCALE: 1/4"=1'-0"