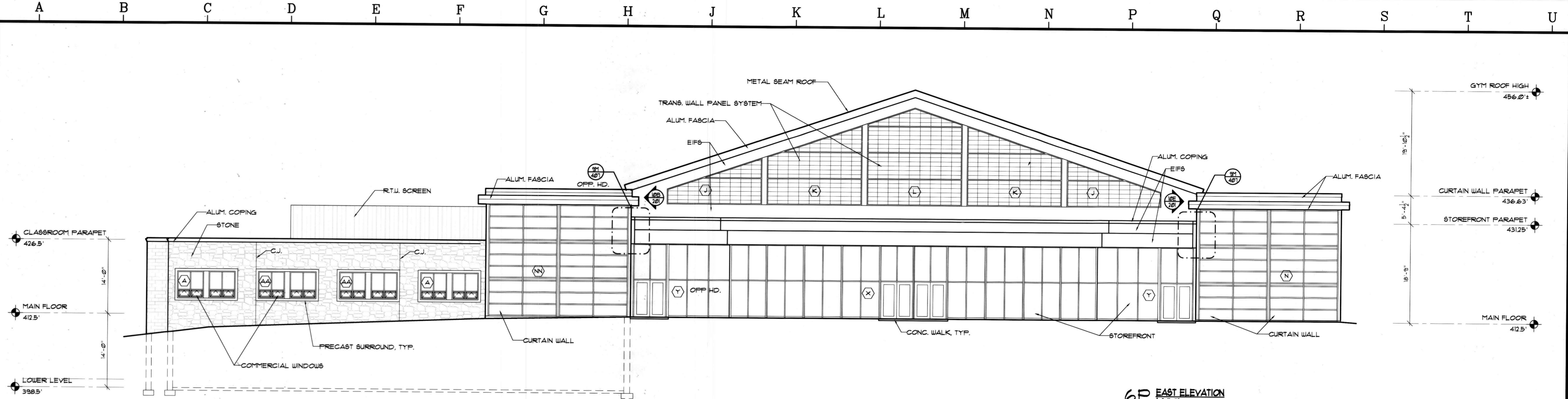


**RUBELING & ASSOCIATES, INC.**  
 ARCHITECTURE  
 INTERIOR DESIGN  
 401 JEFFERSON AVENUE  
 TOWSON, MARYLAND 21286-5308  
 410-337-2899  
 FAX: 410-337-2874

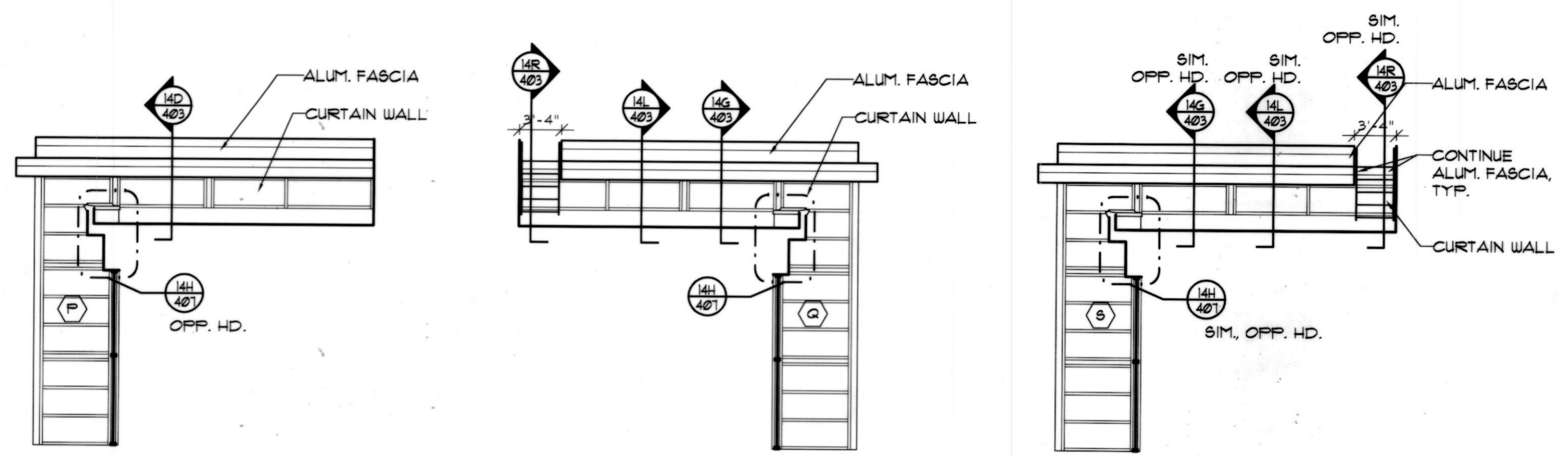
**SPORT AND FITNESS CENTER**  
**NOTRE DAME PREPARATORY SCHOOL**  
 815 HAMPTON LANE  
 TOWSON, MARYLAND 21286



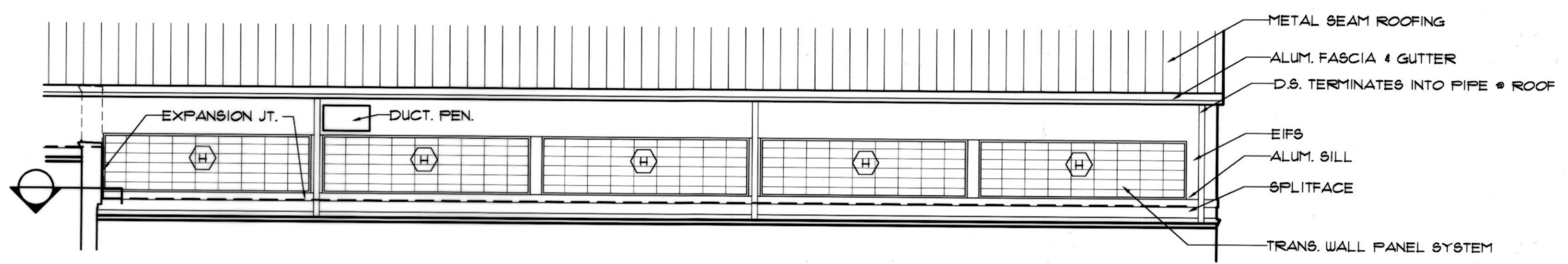
**6P EAST ELEVATION**  
 $\frac{1}{8}'' = 1'-0''$

DEDUCT ALTERNATE #3: Deduct cost of all translucent wall panel systems from the building facade and in its place substitute EIFS to match the rest of the wall. See 6P/A20, 10P/A20, and 9R/A20.

DEDUCT ALTERNATE #1: Delete EIFS shown on pre-engineered steel building in details 1E & 14J/A40, details 14F, 14Q, 4C&G, & 6L on A402 and all details with EIFS shown on A406. In its place use Ceco Rock metal wall panel with trim.

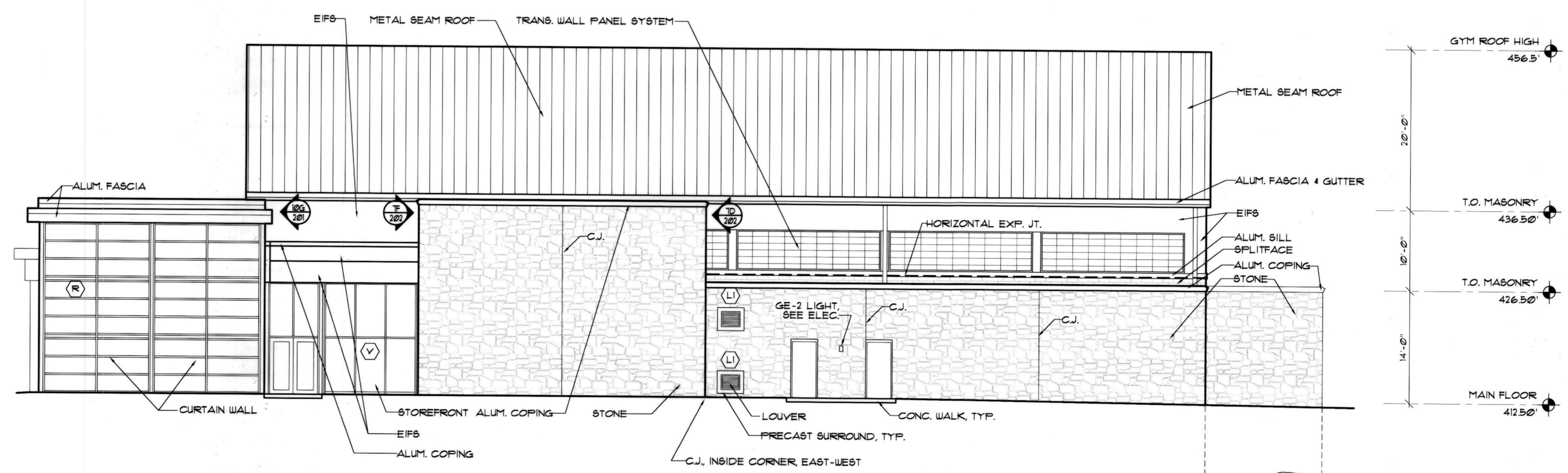
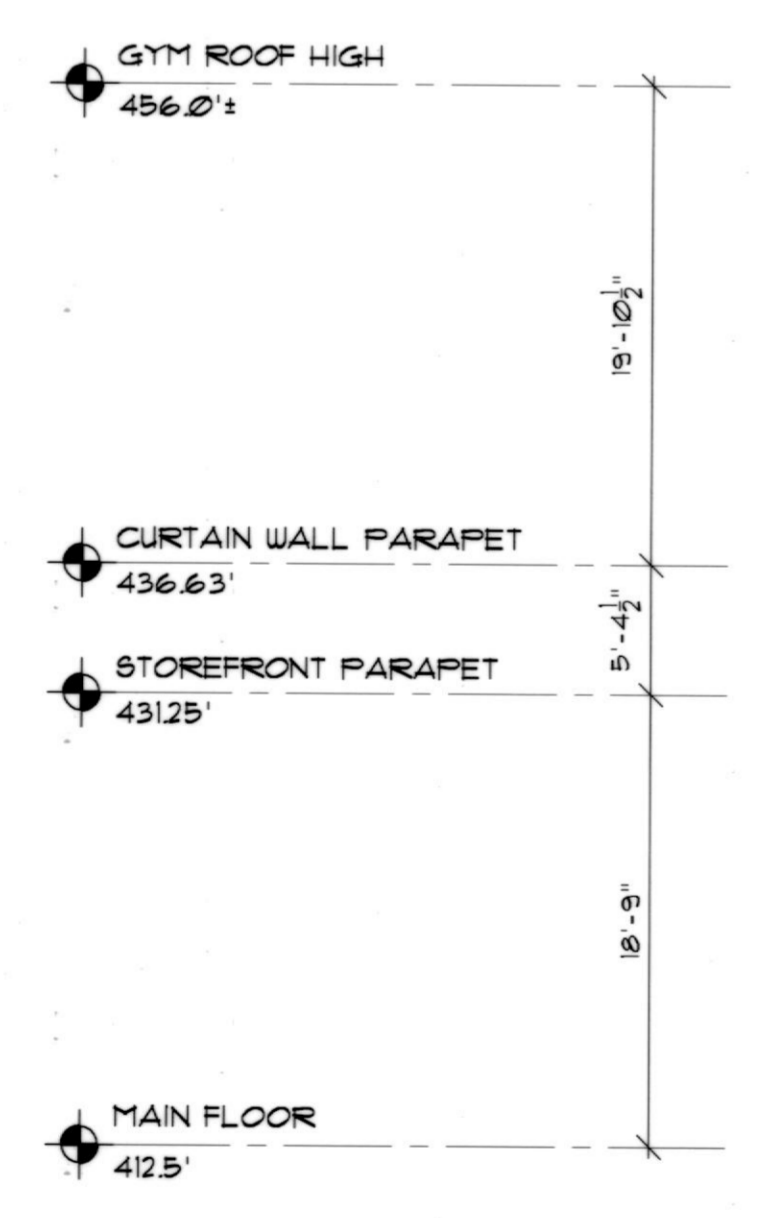


**10B PARTIAL NORTH ELEVATION**  
 $\frac{1}{8}'' = 1'-0''$       **10E PARTIAL SOUTH ELEVATION**  
 $\frac{1}{8}'' = 1'-0''$       **10G PARTIAL WEST ELEVATION**  
 $\frac{1}{8}'' = 1'-0''$



**10P PARTIAL NORTH ELEVATION**  
 $\frac{1}{8}'' = 1'-0''$

DEDUCT ALTERNATE #3: Deduct cost of all translucent wall panel systems from the building facade and in its place substitute EIFS to match the rest of the wall. See 6P/A20, 10P/A20, and 9R/A20.



**13P NORTH ELEVATION**  
 $\frac{1}{8}'' = 1'-0''$

ADD ALTERNATE #1: Add the cost of constructing Gym Storage Area L11 & L12 as a two level storage area with stone veneer.

DEDUCT ALTERNATE #2: Delete EIFS shown on pre-engineered steel building in details 1E & 14J/A40, details 14F, 14Q, 4C&G, & 6L on A402 and all details with EIFS shown on A406. In its place use Ceco Rock metal wall panel with trim.

REVISIONS:		
NO.	DESCRIPTION	DATE
1	RECORD DWG.	09/05/03

LAST REV.:  
 PROJECT NO.: 02-031  
 DATE: 6-21-03  
 SCALE:  $\frac{1}{8}'' = 1'-0''$   
 TITLE:  
 ELEVATIONS

SHEET:  
**A**  
**201**