

DRAWING NOTES

- 330A CONCRETE FOOTING. SEE STRUCT. DUGS.
- 330B 8" CONCRETE SLAB ON GRADE w/ 6#x12@8x20 W/PT. ON VAPOR BARRIER. SEE STRUCT. DUGS.
- 330C TURNED DOWN CONC. SLAB - SEE STRUCT. DUGS.
- 330D 4" PERFORATED CONC. DRAIN - TIE INTO STORMDRAIN - SEE CIVIL DUGS.
- 330E 4" GRAVEL w/ 1# VAPOR BARRIER.
- 330F 3/4" LIGHTWEIGHT CONC. SLAB w/ 6#x12@8x20 W/PT. AND 1/4" CORR. METAL DECK - SEE STRUCT. DUGS.
- 330G THICKENED SLAB - SEE STRUCT. DUGS.
- 330H 2"-Ø x 1/2" S&S DOUCEL
- 330I CONC. CURB
- 330J CONC. WALK - SEE CIVIL DUGS.
- 330K ISOLATION JOINT FILLER STRIP
- 340A PRECAST CONC. HEAD
- 340B PRECAST CONC. SILL
- 420A ACOUSTIC CPU w/ JOINT REINFORCING 16" O.C. - SEE PATTERN AND--
- 420B BUTLER STONE w/ VENEER ANCHORS 16" EACH WAY
- 420C CPU w/ JOINT REINFORCING 16" O.C.
- 420D BOND BEAM. SEE STRUCT. DUGS.
- 420E REIN. CPU WALL - SEE STRUCT.
- 420F 8" FLTRFACE CPU w/ VENEER ANCHORS 16" EACH WAY
- 420G 12" VANTY BLOCK CPU w/ TRUSS-TYPE REIN. 16" O.C. MAX. VERTICALLY, AND HORIZ. BARS - SEE STRUCT. DUGS.
- 420H 12" VANTY 8" FLTRFACE BLOCK w/ TRUSS-TYPE REIN. 16" O.C. MAX. VERTICALLY, AND HORIZ. BARS - SEE STRUCT. DUGS.
- 510A BEAM - SEE STRUCT. DUGS.
- 510B HOIST BEAM - SEE STRUCT. DUGS.
- 510C HAT CHANNEL, 16" O.C.
- 510D ANGLE - SEE STRUCT. DUGS.
- 510E LINTEL, PTD. - SEE STRUCT. DUGS.
- 510F CHANNEL, PTD.
- 510G 3/4" KICKER, 4'-Ø O.C.
- 510H 3/4" x 3/4" x 1/4" STEEL BILL ANGLE - COORD. w/ ELEVATOR MANUFACTURER
- 510I STEEL LADDER
- 510J TUBE STEEL - SEE STRUCT. DUGS.
- 510K 3/4" x 4 1/2" L.L.V. ANGLE
- 510L METAL JOIST - SEE STRUCT. DUGS.
- 510M KICKER 4'-Ø O.C. - SEE STRUCT. DUGS.
- 510N 1/2" GALV. METAL ROOF DECK
- 510O 2" GALV. COMPOSITE METAL DECK
- 510P 4" 18 GA. METAL STUD, 16" O.C. w/ 1/4" GUS. PTD.
- 510Q 4" 18 GA. METAL STUD, 16" O.C.
- 510R ALTERNATING TREAD STAIR
- 510S METAL PAN STAIRS w/ CHANNEL STRINGER
- 510T CHANNEL - SEE STRUCT. DUGS.
- 510U GUARDRAIL w/ HANDRAILS - SEE DETAILS 4C4E/101
- 510V STAIR CHANNEL
- 510W SILL - SEE DOOR SCHEDULE
- 510X WOOD SILL, STAINED TO MATCH DOORS
- 510Y 3/4" COX PLYWOOD
- 510Z 1/2" OSB
- 510AA 1/2" CEMENTITIOUS SHEATHING BOARD
- 510AB WOOD BLOCKING
- 510AC 1/2" FIRE TREATED PLYWOOD
- 510AD WATERPROOFING MEMBRANE + PROTECTION BOARD/FOUNDATION DRAINAGE MATTING
- 510AE 1/2" DRAIN BOARD w/ FILTER CLOTH
- 510AF BITUMINOUS DAMPROOFING
- 510AG BITUMINOUS COATING ON CPU
- 510AH R5 BATT INSULATION w/ VAPOR BARRIER
- 510AI 2" RIGID INSULATION
- 510AJ 2" PERIMETER INSULATION
- 510AK ROOF INSULATION 3" MINIMUM
- 510AL EPS ON 1" RIGID INSULATION ON 1/2" CEMENTITIOUS SHEATHING BOARD
- 510AM EPS ON 2 1/2" RIGID INSULATION ON 1/2" CEMENTITIOUS SHEATHING BOARD
- 510AN PREFINISHED ALUM. PANEL
- 510AO THRU-WALL FLASHING w/ SLEEPHOLES 2"-Ø O.C.
- 510AP 6" CLEAR ANODIZED ALUMINUM PANEL
- 510AQ ALUMINUM SCFIT
- 510AR CAP FLASHING
- 510AS 6" CLEAR ANODIZED ALUMINUM COPING
- 510AT EPDM MEMBRANE ROOFING
- 510AU ALUMINUM COPING - CLEAR ANODIZED ROOF HATCH
- 510AV HM. FRAME - SEE DOOR SCHEDULE
- 510AW WOOD DOOR - SEE DOOR SCHEDULE
- 510AX ALUM. STOREFRONT
- 510AY ALUM. STOREFRONT DOOR
- 510AZ CURTAIN WALL
- 510BA CURTAIN WALL DOOR
- 510BB CURTAIN WALL CAP USED AS TRIM
- 510BC ALUMINUM WINDOW
- 510BD TRANSLUCENT FIBERGLASS SANDWICH PANEL WALL ASSEMBLY
- 510BE ALUMINUM SILL EXTENSION
- 510BF CEILING GRID SYSTEM SHADOW MOLDING
- 510BG 1/2" FURRING # 24" O.C. WITH 1/4" GUS. PTD.
- 510BH 1 1/2" RIGID INSULATION WITH 1 1/2" FURRING # 24" O.C. WITH 1/4" GUS. PTD. - EXTEND INSULATION TO DECK ABOVE
- 510BI 1/2" GUS. PTD.
- 510BJ 3/8" MET. STUD w/ 1/4" GUS. PTD.
- 510BK 1/4" REVEAL TRIM, SPACKLE FLUSH
- 510BL SUPPENDED ACOUSTIC CEILING PANEL ASSEMBLY - SEE FINISH SCHEDULE
- 510BM GYMNASIUM FLOATING WOOD ATHLETIC FLOOR SYSTEM w/ FLOOR PANS. PROVIDE VAPOR PROOFING FOAM OVER POLYETHYLENE VAPOR BARRIER ON CONC. 18" GRADE MARLE THROUGHOUT. TRANSITIONS TO 3RD GRADE MARLE BELOW FULLY CLOSED BLEACHERS ONLY - SEE FIN. SCHED. PROVIDE SOLID BLOCKING UNDER OPEN BLEACHERS
- 510BN ACTIVITY ROOF FLOATING WOOD ATHLETIC FLOOR SYSTEM. PROVIDE VAPOR PROOFING FOAM OVER POLYETHYLENE VAPOR BARRIER ON CONC. LOCKER - SEE FLOOR PLANS
- 510BO MOTORIZED ROLLER SHADE w/ MAN. STD. POCKET FOR MOUNTING
- 510BP GABLE ANGLE
- 510BQ CLOSURE PANEL BY BLEACHER MANUFACTURER
- 510BR ELECTRICALLY OPERATED BLEACHERS
- 510BS SAVE STRUT
- 510BT BUILDING FRAME CLEAR SPAN (FP), PTD. P-4 - SEE FINISH SCHED.
- 510BU GUTTER
- 510BV CHANNEL GIRT w/ BAG ROD
- 510BW Z-GIRT
- 510BX CHANNEL GIRT BEAM
- 510BY HORIZONTAL FLASHING
- 510BZ PURLN, PTD. P-4 - SEE FINISH SCHED.
- 510CA METAL ROOF W/CLIP SYSTEM
- 510CB STRUCTURAL WITH GIRT + CLIP, PTD. P1 - SEE FINISH SCHED.
- 510CC RAKE TRIM
- 510CD 6" FIBER GLASS INSULATION AND VAPOR RETARDER - PERFORATED FOR MAXIMUM ACOUSTIC PERFORMANCE
- 510CE METAL WALL PANELS w/ AGGREGATE PAINT
- 510CF 68" ELEVATOR DOOR FRAME
- 510CG MECH. SUPPLY VENT - SEE MECH. DUGS.



401 JEFFERSON AVENUE  
TOWSON, MARYLAND 21286-5308  
410-337-2888  
FAX: 410-337-2974

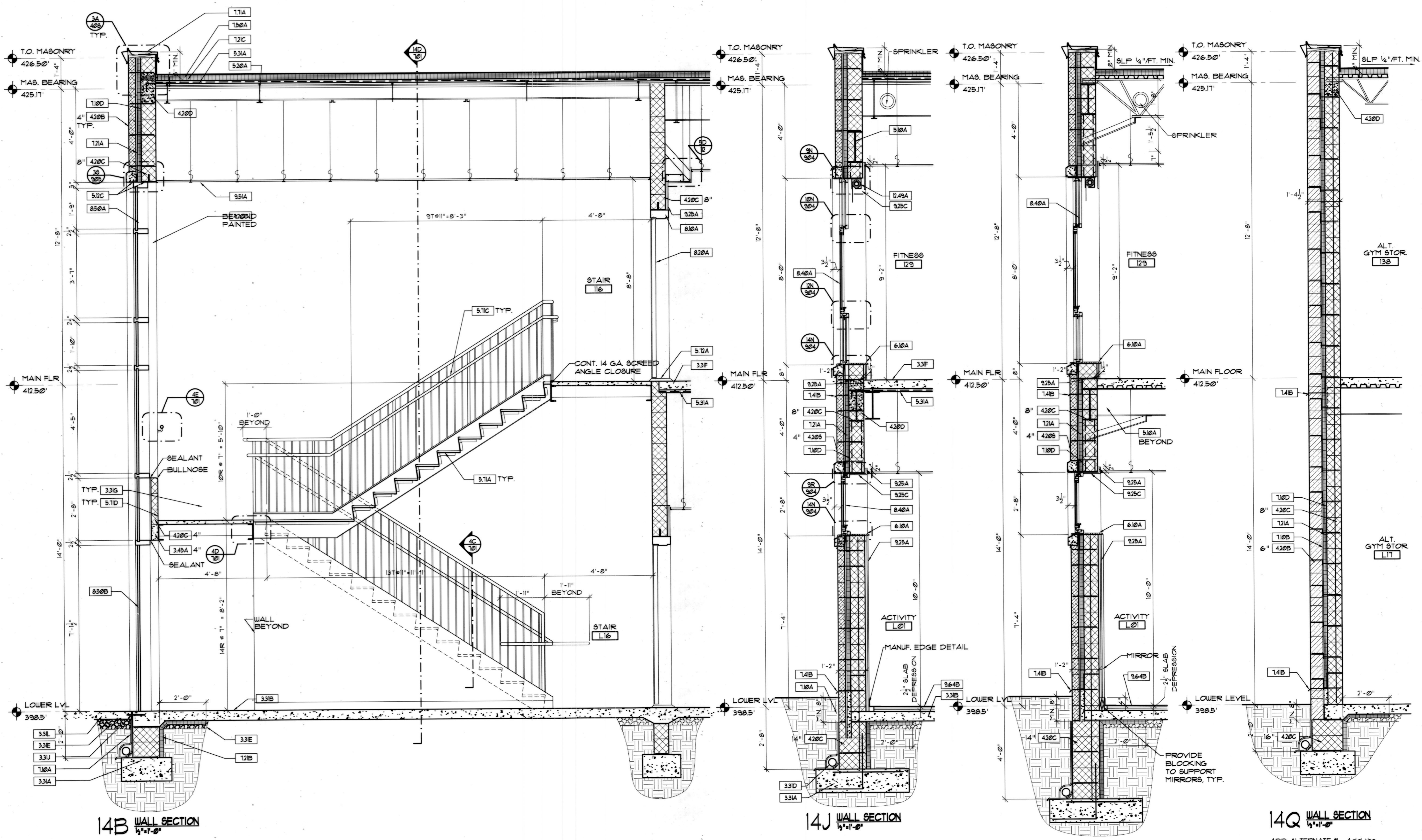
SPORT AND FITNESS CENTER  
NOTRE DAME PREPARATORY SCHOOL  
815 HAMPTON LANE,  
TOWSON, MARYLAND 21286

REVISIONS:

NO.	DESCRIPTION	DATE
1	RECORD DUGS.	05/05/09

LAST REV. PROJECT NO.: 02-031  
DATE: 6-21-03  
SCALE: 1/8"=1'-0"  
TITLE: WALL SECTIONS

SHEET: A  
405



14B WALL SECTION  
1/4"=1'-0"

14J WALL SECTION  
1/4"=1'-0"

14N WALL SECTION  
1/4"=1'-0"

14Q WALL SECTION  
1/4"=1'-0"

ADD ALTERNATE #1. Add the cost of constructing Gym Storage Area L11 & L12 as a two level storage area.