

DRAWING NOTES

- 330A CONCRETE FOOTING - SEE STRUCT. DUGS.
- 330B 5" CONCRETE SLAB ON GRADE w/ 6x6-12'S X2'S W/PT. ON VAPOR BARRIER - SEE STRUCT. DUGS.
- 330C TURNED DOWN CONC. SLAB - SEE STRUCT. DUGS.
- 330D 4" PERFORATED CONC. DRAIN - TIE INTO STAIR DRAIN - SEE CIVIL DUGS.
- 330E 4" GRAVEL w/ 1/2" MIL VAPOR BARRIER.
- 330F 3/4" LIGHTWEIGHT CONC. SLAB w/ 6x6-12'S W/PT. AND 1/2" CORR. METAL DECK - SEE STRUCT. DUGS.
- 330H THICKENED SLAB - SEE STRUCT. DUGS.
- 330I 2'-0" X 1/2" S.S. DOGEL
- 330J CONC. CURB
- 330K CONC. WALK - SEE CIVIL DUGS.
- 330L ISOLATION JOINT FILLER STRIP
- 340A PRECAST CONC. HEAD
- 340B PRECAST CONC. BILL
- 420A ACOUSTIC CPU w/JOINT REINFORCING 16" O.C. - SEE PATTERN ASS-...
- 420B BUTLER STONE w/VENEER ANCHORS 16" EACH WAY
- 420C CPU w/JOINT REINFORCING 16" O.C.
- 420D BOND BEAM - SEE STRUCT. DUGS.
- 420E REIN. CPU WALL - SEE STRUCT.
- 420F SPLITFACE CPU w/VENEER ANCHORS 16" EACH WAY
- 420G 1/2" VANT" BLOCK CPU w/TRUSS-TYPE REIN. 16" O.C. MAX. VERTICALLY, AND HORIZ. BARS - SEE STRUCT. DUGS.
- 420H 1/2" VANT" SPLITFACE BLOCK w/TRUSS-TYPE REIN. 16" O.C. MAX. VERTICALLY, AND HORIZ. BARS - SEE STRUCT. DUGS.
- 530A BEAM - SEE STRUCT. DUGS.
- 530B HOIST BEAM - SEE STRUCT. DUGS.
- 530C HAT CHANNEL, 16" O.C.
- 530D ANGLE - SEE STRUCT. DUGS.
- 530E LINTEL, PTD. - SEE STRUCT. DUGS.
- 530F CHANNEL, PTD.
- 530G 3/4" KICKER, 4'-0" O.C.
- 530H 3/4" X 1/2" STEEL SILL ANGLE - COORD. w/ ELEVATOR MANUFACTURE
- 530I STEEL LADDER
- 530J TUBE STEEL - SEE STRUCT. DUGS.
- 530K 3/4" X 1/2" L.L.V. ANGLE
- 530L METAL JOIST - SEE STRUCT. DUGS.
- 530M KICKER 4'-0" O.C. - SEE STRUCT. DUGS.
- 530N 1/2" GALV. METAL ROOF DECK
- 530O 2" GALV. COMPOSITE METAL DECK
- 540A 4" 18 GA. METAL STUD, 16" O.C. w/ 1/2" GUS. PTD.
- 540B 4" 18 GA. METAL STUD, 16" O.C.
- 550A ALTERNATING TREAD STAIR
- 550B METAL PAN STAIRS w/CHANNEL STRINGER
- 570 CHANNEL - SEE STRUCT. DUGS.
- 570C GUARDRAILS/HANDRAILS - SEE DETAILS 4C4/E/10
- 570D STAIR CHANNEL
- 570E BILL - SEE DOOR SCHEDULE
- 600A WOOD BILL, STAINED TO MATCH DOORS
- 600B 3/4" CDX PLYWOOD
- 600C 1/2" OSB
- 600D 1/2" CEMENTITIOUS SHEATHING BOARD
- 600E WOOD BLOCKING
- 600F 1/2" FIRE TREATED PLYWOOD
- 100A WATERPROOFING MEMBRANE + PROTECTION BOARD/FOUNDATION DRAINAGE MATTING
- 100B 1/2" DRAIN BOARD w/FILTER CLOTH
- 100C BITUMINOUS DAMPROOFING
- 100D BITUMINOUS COATING ON CPU
- 100E RIB BATT INSULATION w/VAPOR BARRIER
- 100F 2" RIGID INSULATION
- 100G PENETETER INSULATION
- 100H ROOF INSULATION 3" MINIMUM
- 100I EPS ON 1" RIGID INSULATION ON 1/2" CEMENTITIOUS SHEATHING BOARD
- 100J EPS ON 2 1/2" RIGID INSULATION ON 1/2" CEMENTITIOUS SHEATHING BOARD
- 100K PREFINISHED ALUM. PANEL
- 100L THRU-WALL FLASHING w/WEEPOLES 2'-0" O.C.
- 100M 0.40 CLEAR ANODIZED ALUMINUM PANEL
- 100N ALUMINUM SOFFIT
- 100O CAP FLASHING
- 100P 0.40 CLEAR ANODIZED ALUMINUM COPING
- 100Q EPDM MEMBRANE ROOFING
- 100R ALUMINUM COPING - CLEAR ANODIZED ROOF HATCH
- 800A HM FRAME - SEE DOOR SCHEDULE
- 800B WOOD DOOR - SEE DOOR SCHEDULE
- 800C ALUM. STOREFRONT
- 800D ALUM. STOREFRONT DOOR
- 800E CURTAIN WALL
- 800F CURTAIN WALL DOOR
- 800G CURTAIN WALL CAP USED AS TRIM
- 800H ALUMINUM WINDOW
- 800I TRANSLUCENT FIBERGLASS SANDWICH PANEL WALL ASSEMBLY
- 800J ALUMINUM SILL EXTENSION
- 800K CEILING GRID SYSTEM SHADOW MOLDING
- 800L 1/2" FURRING # 24" O.C. WITH 1/2" GUS. PTD.
- 800M 1/2" RIGID INSULATION WITH 1/2" Z-FURRING # 24" O.C. WITH 1/2" GUS. PTD. - EXTEND INSULATION TO DECK ABOVE
- 800N 1/2" GUS. PTD.
- 800O 3/4" MET. STUD w/ 1/2" GUS. PTD.
- 800P 1/2" REVEAL TRIM SPACKLE FLUSH
- 800Q SUSPENDED ACOUSTIC CEILING PANEL ASSEMBLY - SEE FINISH SCHEDULE
- 800R 07000000 FLOATING WOOD ATHLETIC FLOOR SYSTEM w/ FLOOR FANS. PROVIDE VAPOR PROOFING FOAM OVER POLYETHYLENE VAPOR BARRIER ON CONC. 1ST GRADE TABLE THROUGHOUT. TRANSITIONS TO 2ND GRADE MARBLE BELOW FULLY GLOUED BLEACHERS ONLY - SEE FIN. SCHED. PROVIDE SOLID BLOCKING UNDER OPEN BLEACHERS
- 800S ACTIVITY ROOM FLOATING WOOD ATHLETIC FLOOR SYSTEM. PROVIDE VAPOR PROOFING FOAM OVER POLYETHYLENE VAPOR BARRIER ON CONC. LOCKER - SEE FLOOR PLANS
- 0200A MOTORIZED ROLLER SHADE w/ MAN. STD. POCKET FOR MOUNTING
- 020A GABLE ANGLE
- 020B CLOSURE PANEL BY BLEACHER MANUFACTURE
- 020C CLOSURE
- 020D ELECTRICALLY OPERATED BLEACHERS
- 020E LEAVE STRUT
- 020F BUILDING FRAME CLEAR SPAN (RF) PTD. P-4 - SEE FINISH SCHED.
- 020G GUTTER
- 020H CHANNEL GIRT w/ 8x8 GUS.
- 020I Z-GIRT
- 020J CHANNEL GIRT BEAM
- 020K SIDEWALL FLASHING
- 020L PURLN, PTD. P-4 - SEE FINISH SCHED.
- 020M METAL ROOF W/CLIP SYSTEM
- 020N STRUCTURAL WITH GIRT + CLIP, PTD. P1 - SEE FINISH SCHED.
- 020O RAKE TRIM
- 020P 6" FIBER GLASS INSULATION AND VAPOR RETARDER - PERFORMED FOR MAXIMUM ACOUSTIC PERFORMANCE
- 020Q METAL WALL PANELS w/ AGGREGATE PAINT
- 020R 8.5 ELEVATOR DOOR FRAME
- 020S MECH. SUPPLY VENT - SEE MECH. DUGS.



RUBELING & ASSOCIATES, INC.
ARCHITECTURE
INTERIOR DESIGN

401 JEFFERSON AVENUE
TOWSON, MARYLAND 21286-5308
410-337-2888
FAX: 410-337-5974

SPORT AND FITNESS CENTER
NOTRE DAME PREPARATORY SCHOOL
815 HAMPTON LANE
TOWSON, MARYLAND 21286

REVISIONS:

NO.	DESCRIPTION	DATE
RECORDED	DUGS.	05/05/03

LAST REV.:

PROJECT NO.: 02-02

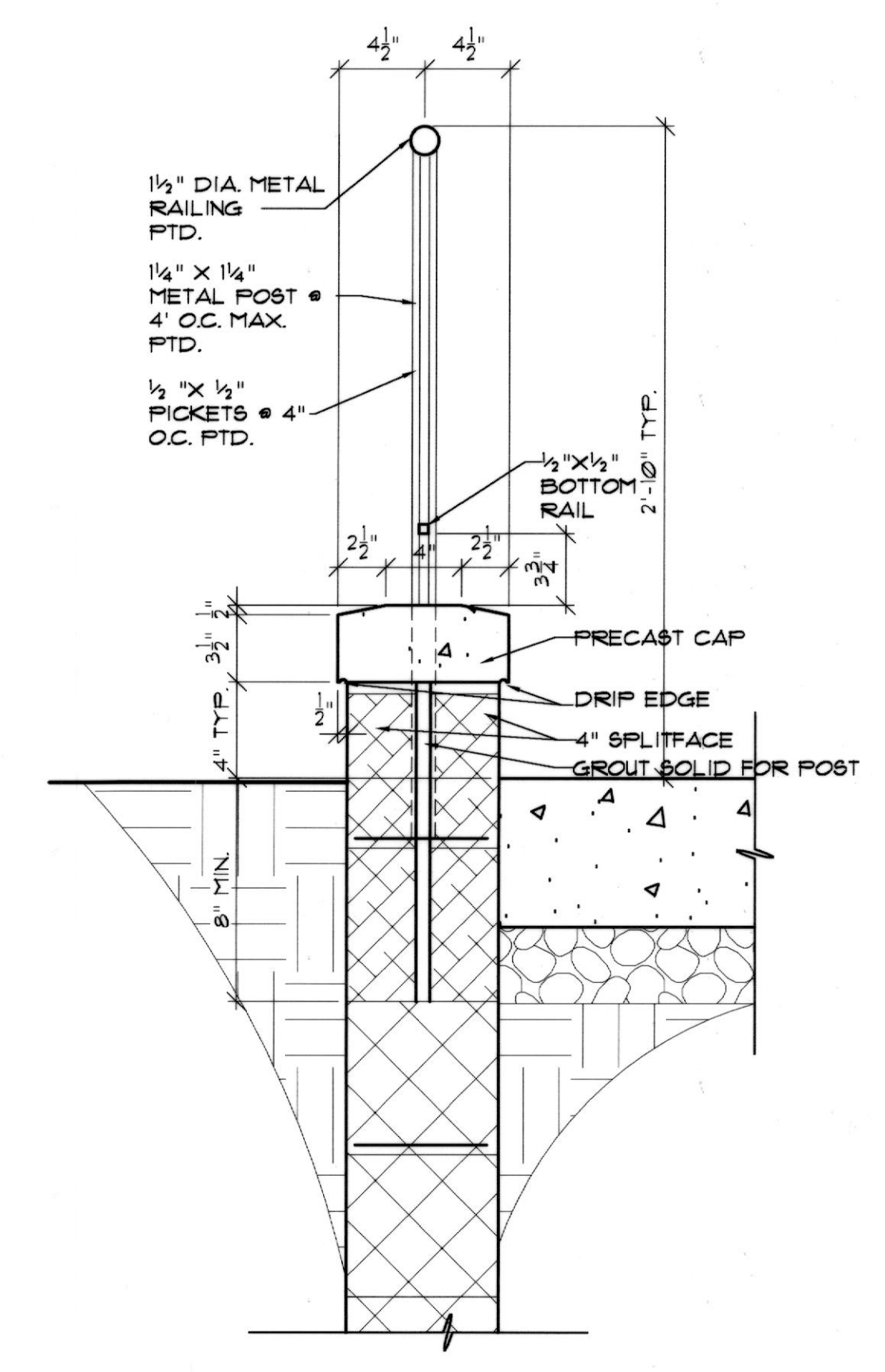
DATE: 6-21-03

SCALE: 1/8" = 1'-0"

TITLE:
EXTERIOR
STAIR
DETAILS

SHEET: A

702



8 WALL RAIL DETAIL
1/2" x 1/2"

