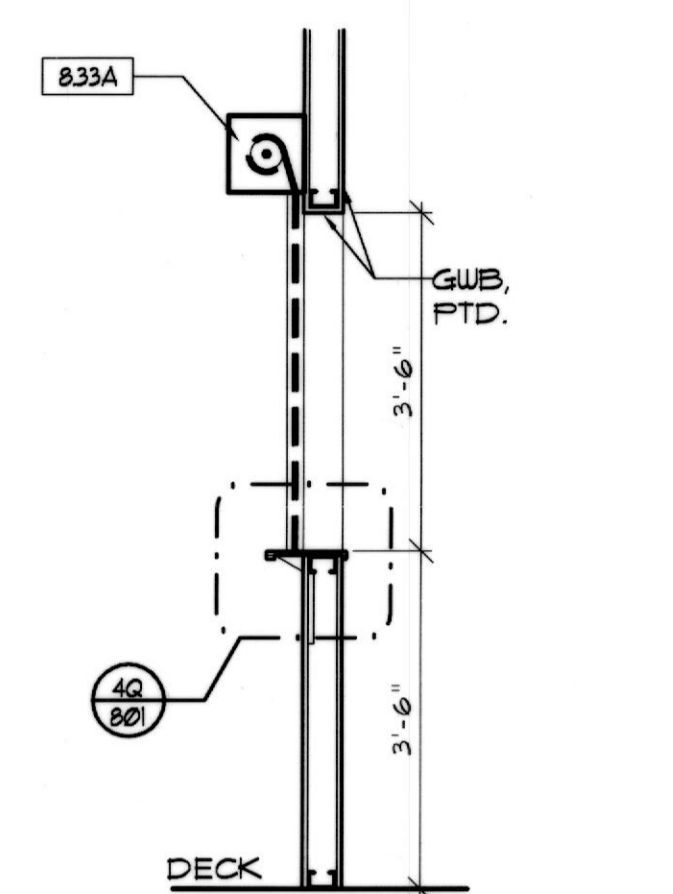


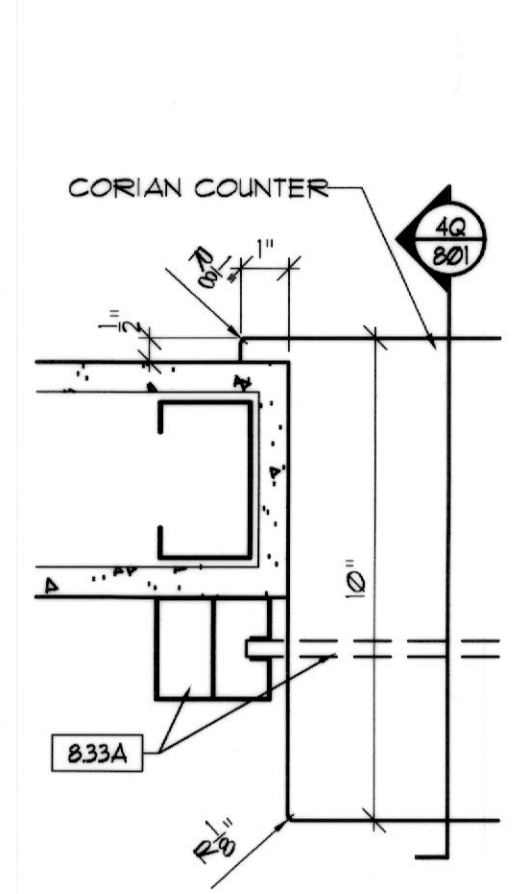
2A ADD ALTERNATE #20 SINK COUNTER PLAN
SCALE: 1/4"=1'-0"

ADD ALTERNATE #20: Add Corian countertops in lieu of plastic laminate counters at Locker Toilets L05, Mens 104, Womens 105 and Kitchen Prep 128. Add Corian integral bowl sinks in lieu of cast iron sinks at Locker Toilets L05, Mens 104 and Womens 105.

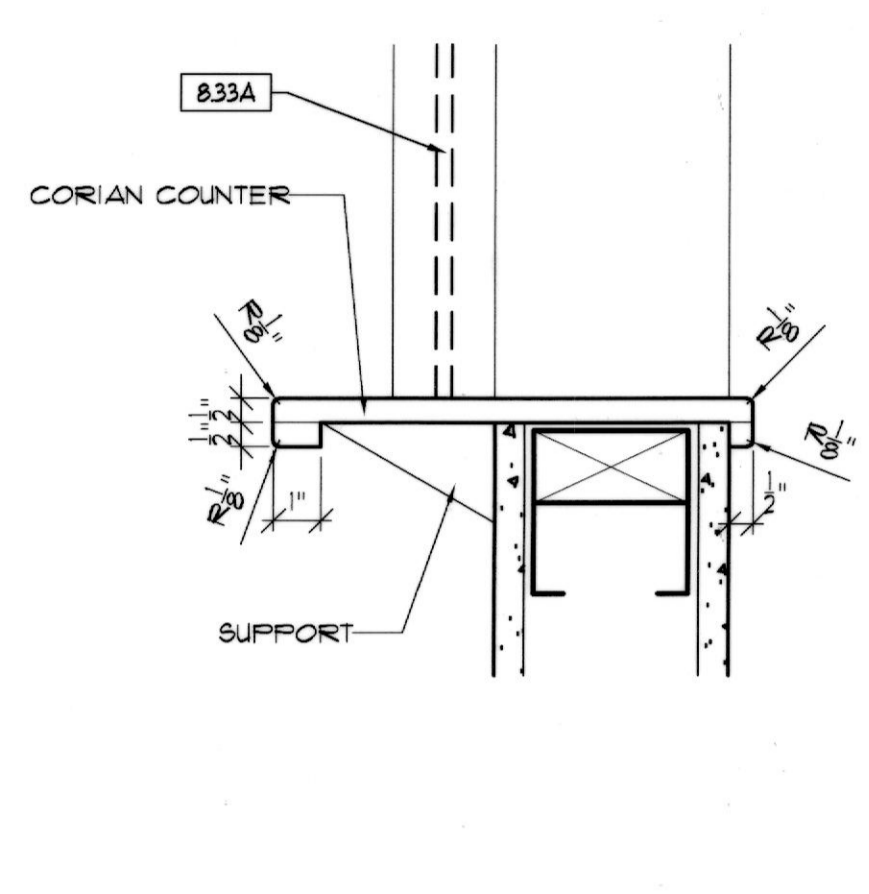


4L OVERHEAD COILING DOOR WALL SECTION
SCALE: 1/2"=1'-0"

NOTE: SEE SPECIFICATION NOTE 1.



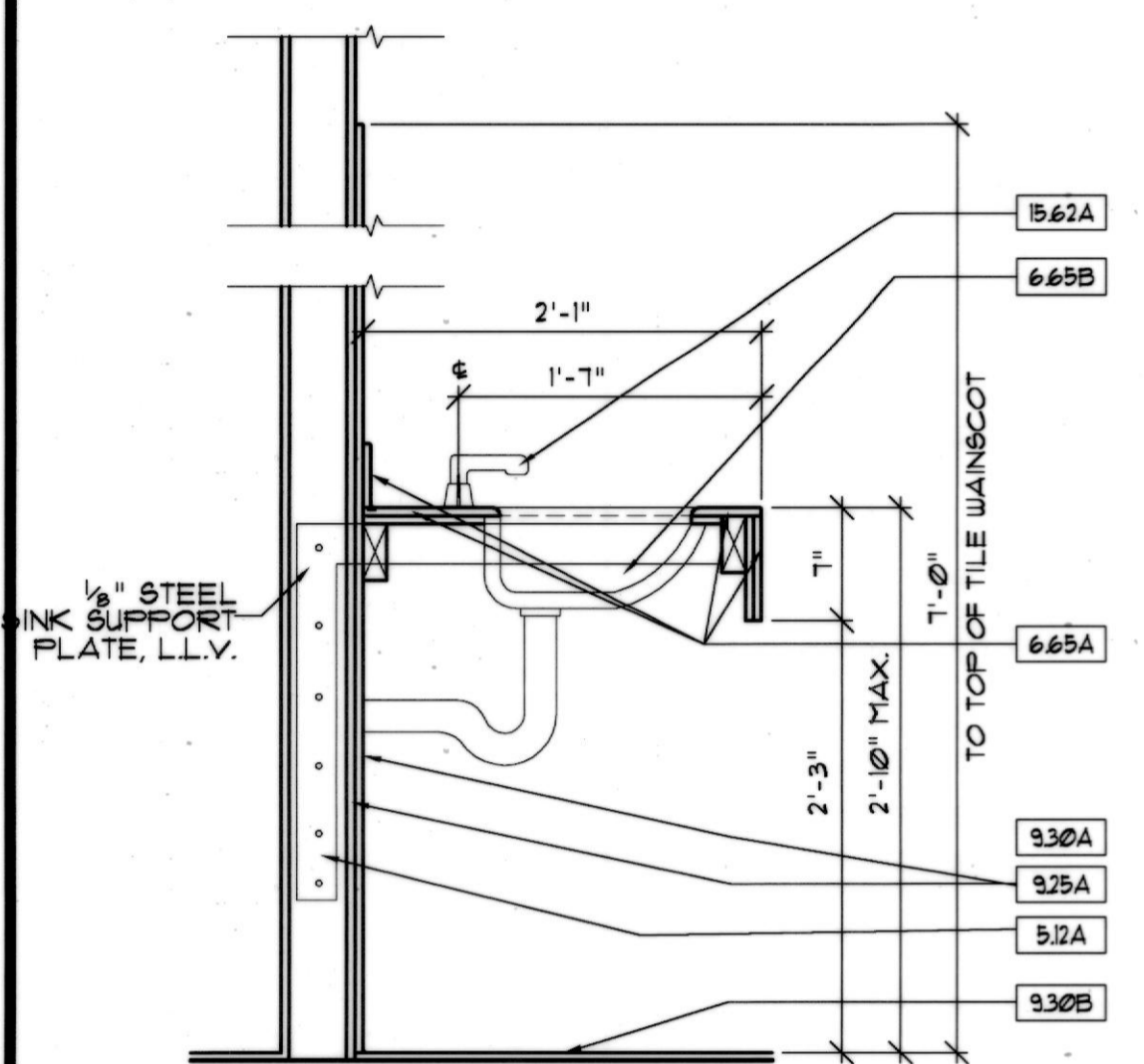
4N OVERHEAD COILING DOOR LEDGE DETAIL
SCALE: 3/4"=1'-0"



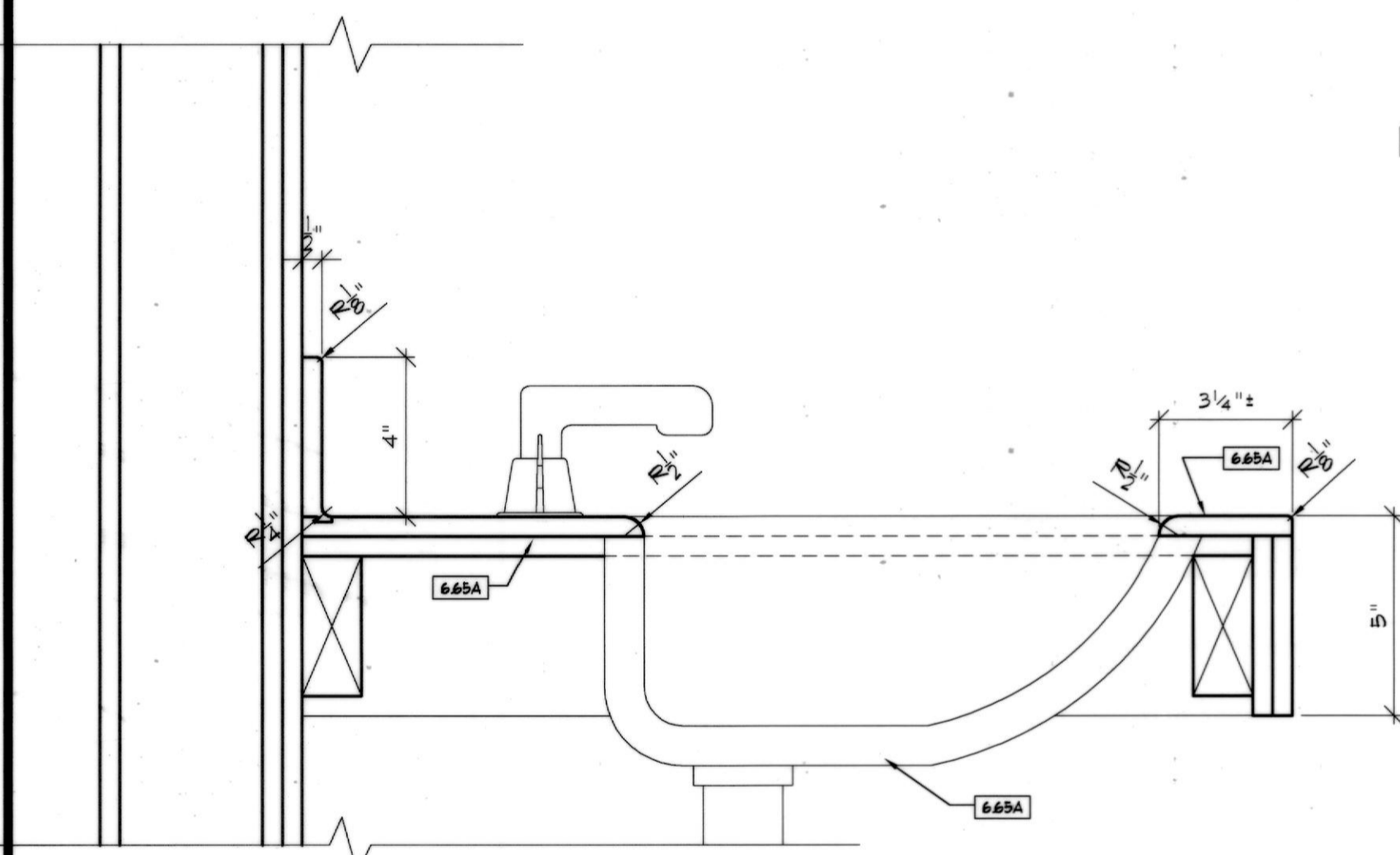
4Q OVERHEAD COILING DOOR LEDGE DETAIL
SCALE: 3/4"=1'-0"

DRAWING NOTES

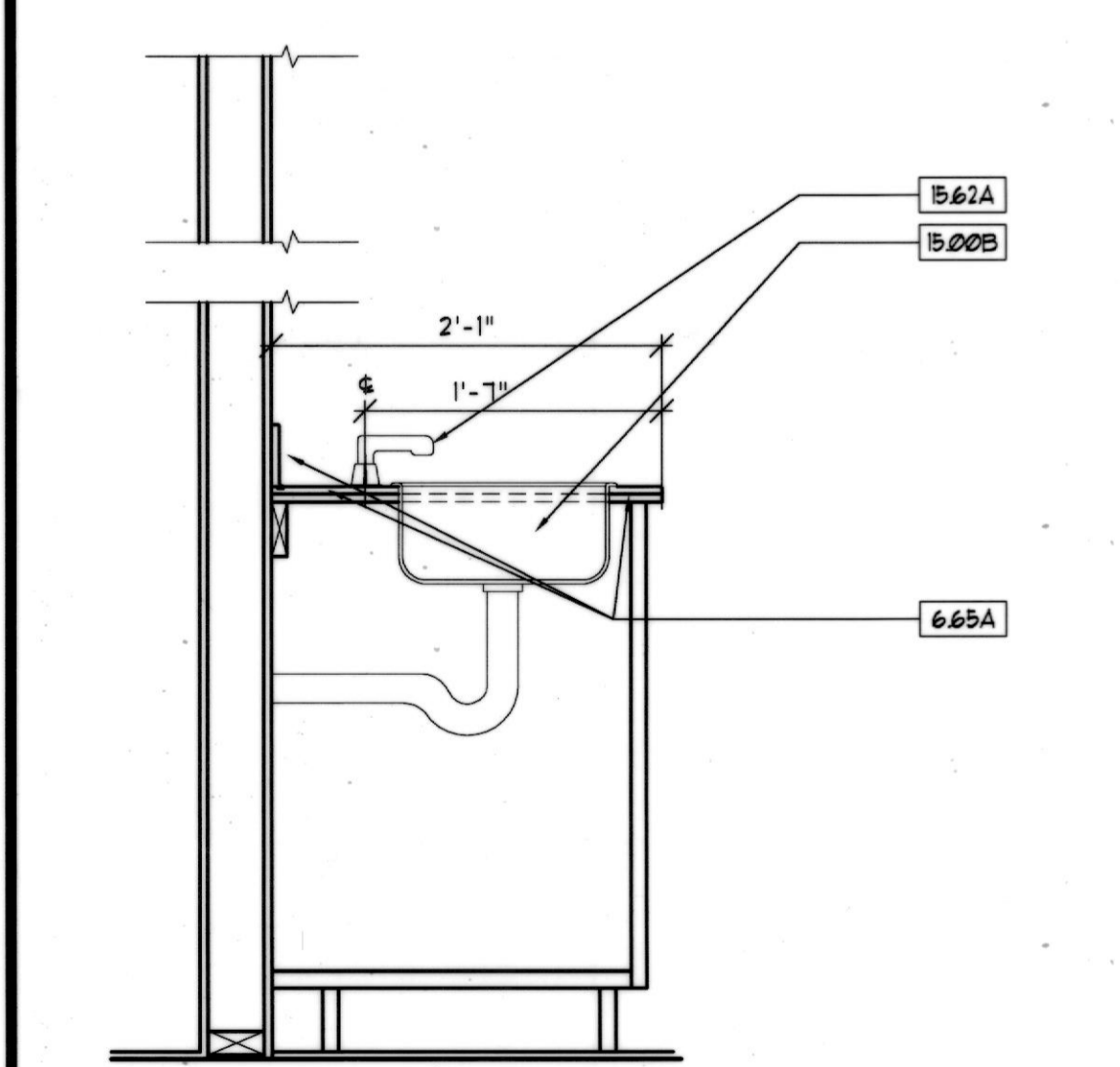
- 420B BUTLER STONE W/VENEER ANCHORS 16" EACH WAY
- 420C CMU W/JOINT REINFORCING 16" O.C.
- 532A METAL STUD.
- 532B STL. LINTEL, PTD.
- 610A BLOCKING.
- 620A SOLID BIRCH.
- 620B BIRCH VENEER PLYWOOD, VENEER EXPOSED EDGES.
- 620C 1/2" TEMPERED GLASS.
- 620D DOUBLE TRACK, BI-PASSING DOOR HARDWARE.
- 620E 3/4" PLYWOOD.
- 620F SHELF STANDARD, RECESSED WITH ADJUSTABLE BRACKET.
- 620G 1/2" TEMPERED GLASS SHELF.
- 620H SLIDING DOOR LOCK.
- 665A CORIAN COUNTER AND BACKSPASH.
- 665B CORIAN INTEGRAL SINK BOWL.
- 790A CLEAR SEALANT.
- 833A OVERHEAD COILING COUNTER DOOR.
- 925A GYPSUM DRYWALL.
- 925B 7/8" FURING W/3/8" GUB. PTD.
- 930A CERAMIC TILE WAINSCOT AND COVE BASE.
- 930B CERAMIC TILE FLOOR.
- 9500B S.S. SINK.
- 962A FAUCET W/ ADA COMPLIANT PADDLE-TYPE HANDLES.



5A SECTION THROUGH CORIAN COUNTER
SCALE: 1/4"=1'-0"

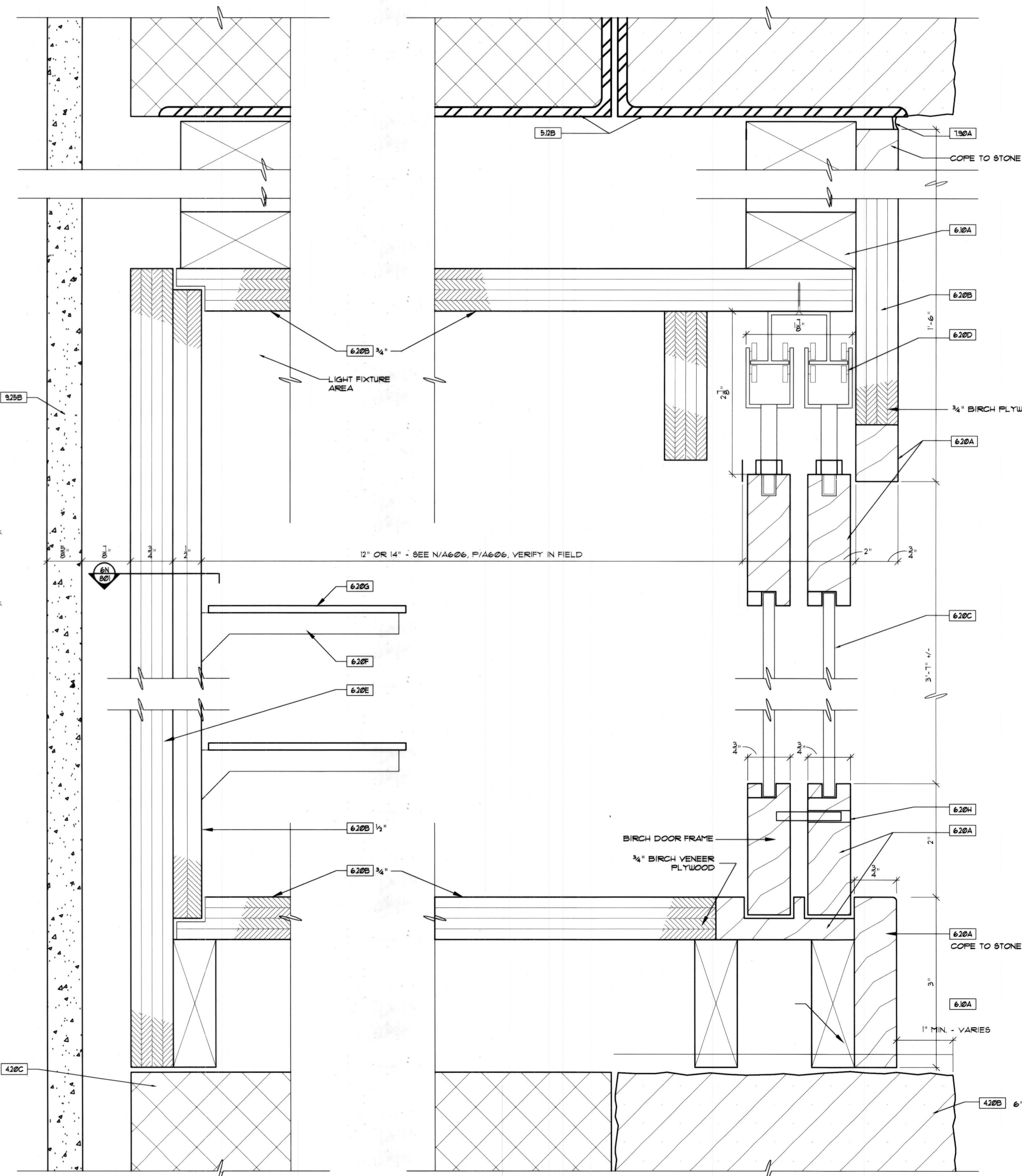


10A ADD ALTERNATE #20 DETAIL #9 CORIAN BACKSPASH AND SINK
SCALE: 3/4"=1'-0"

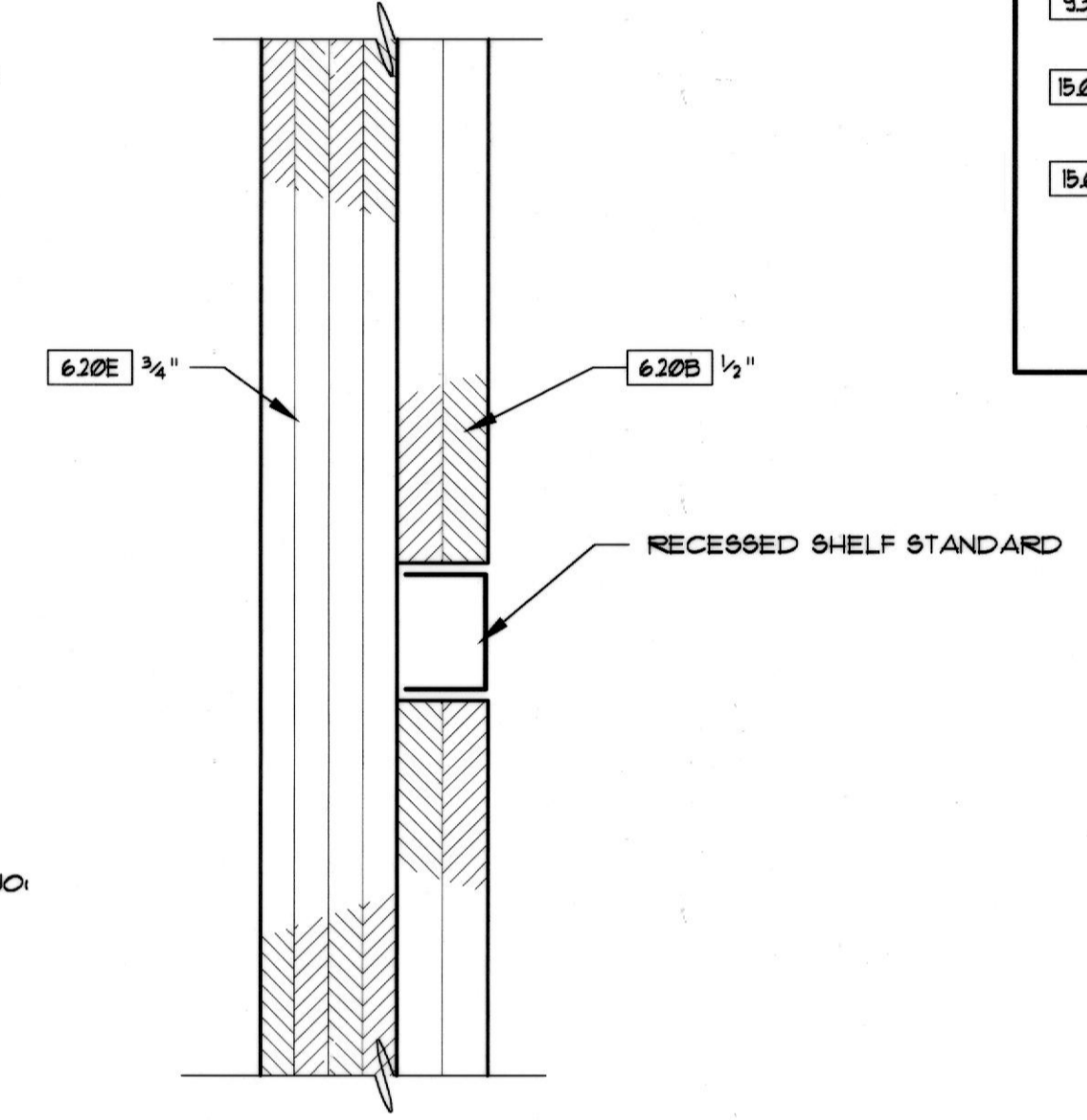


14A SECTION THROUGH CORIAN COUNTER
SCALE: 1/4"=1'-0"

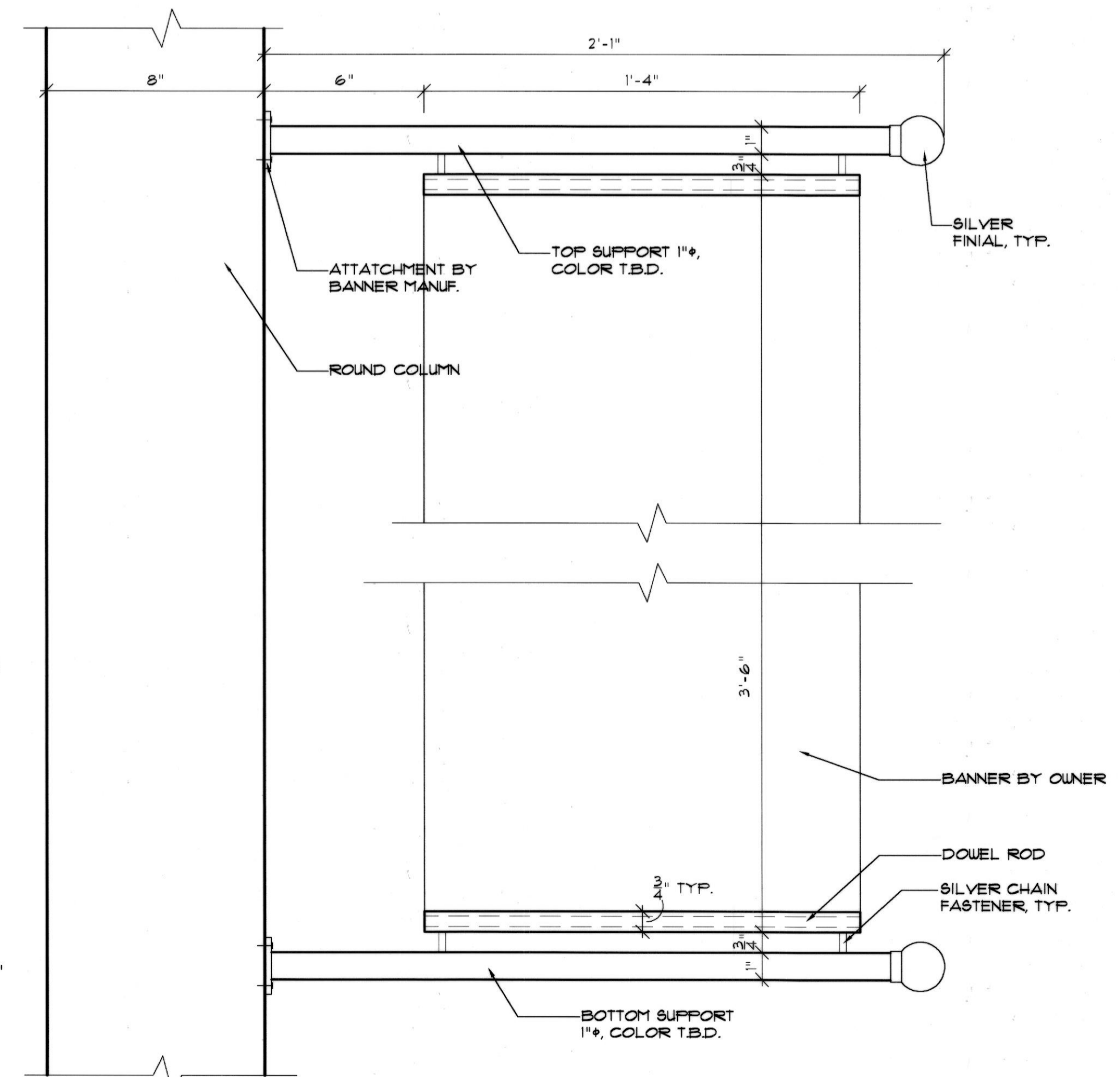
ADD ALTERNATE #20: Add Corian countertops in lieu of plastic laminate counters at Locker Toilets L05, Mens 104, Womens 105 and Kitchen Prep 128. Add Corian integral bowl sinks in lieu of cast iron sinks at Locker Toilets L05, Mens 104 and Womens 105.



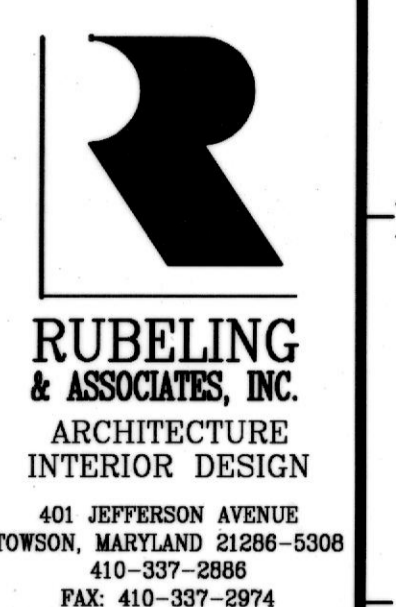
4F DISPLAY CASE SECTION DETAIL
SCALE: 1/2"=1'-0"



6N DISPLAY CASE SECTION DETAIL
SCALE: 1/2"=1'-0"



14L BANNER DETAIL
SCALE: 3/4"=1'-0"



RUBELING & ASSOCIATES, INC.
ARCHITECTURE
INTERIOR DESIGN
401 JEFFERSON AVENUE
TOWSON, MARYLAND 21286-5308
410-337-2886
FAX: 410-337-2874

SPORT AND FITNESS CENTER
NOTRE DAME PREPARATORY SCHOOL
815 HAMPTON LANE
TOWSON, MARYLAND 21286

REVISIONS:

NO.	DESCRIPTION	DATE
RECORD DUG.		05/05/05

LAST REV.:
PROJECT NO.: 02-031
DATE: 6-27-03
SCALE: AS NOTED
TITLE: INTERIOR DETAILS
SHEET: A
801