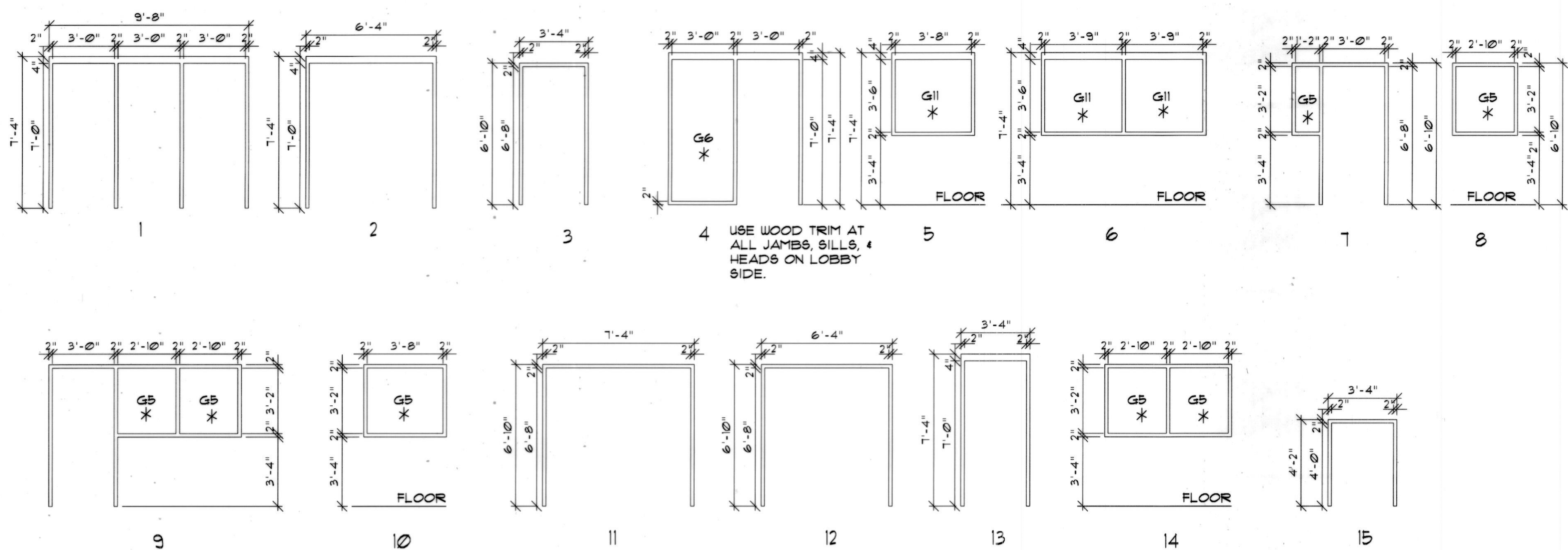


H.M. FRAME TYPES SCALE: 1/4"=1'-0"



GLAZING SCHEDULE

- \* PROVIDE HOR. LOUVERS BLINDS THESE WINDOWS
- G1 CLEAR INSULATING
- G2 TEMPERED LAMINATED INSULATING
- G3 INSULATING SPANDREL
- G4 TEMPERED LAMINATED INSULATING FROSTED
- G5 CLEAR
- G6 CLEAR TEMPERED
- G7 NOT USED
- G8 TEMPERED HEAT MIRRORING INSULATING
- G9 NOT USED
- G10 TEMPERED INSULATING
- G11 TEMPERED LAMINATED

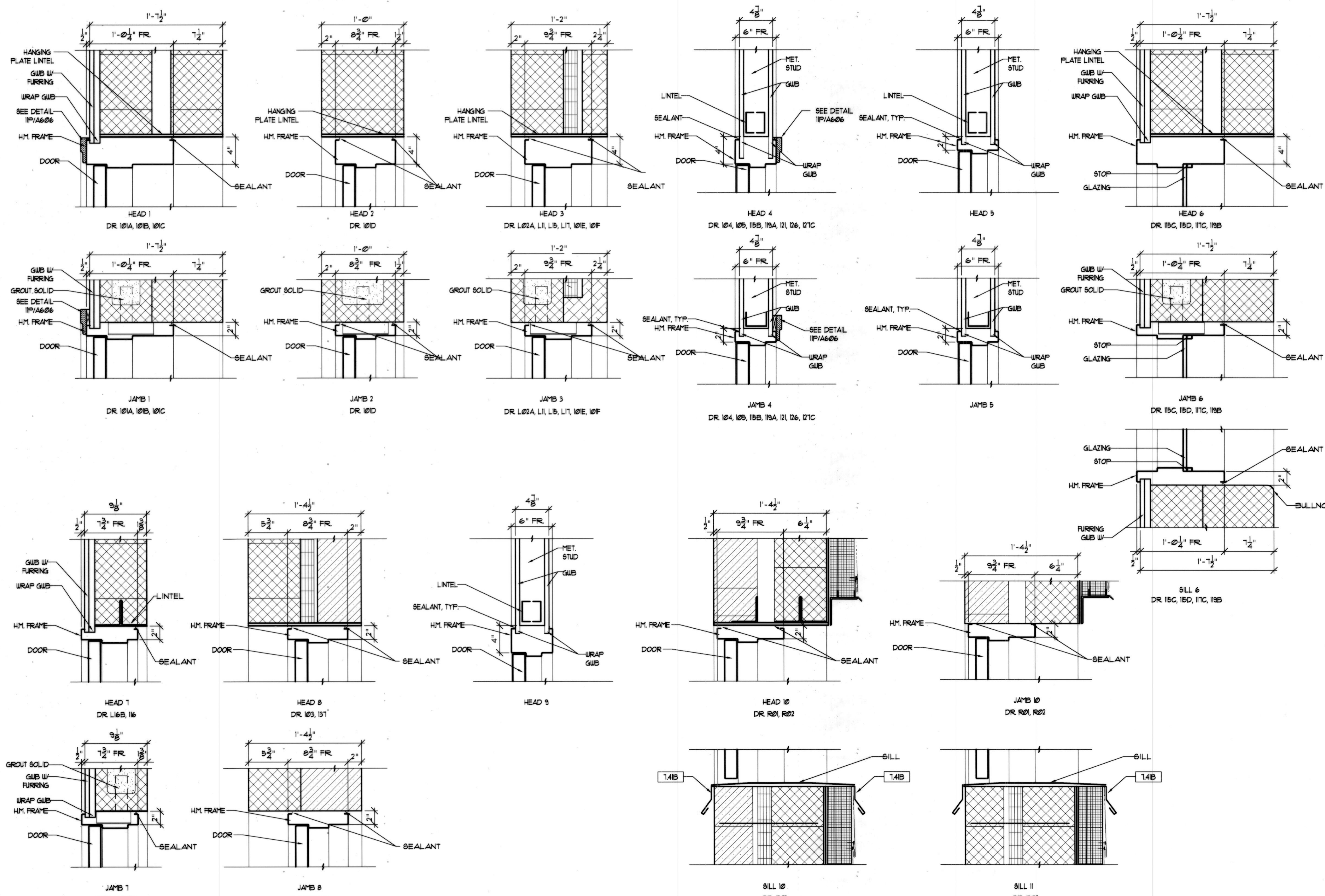
DRAWING NOTES

- 345A PRECAST CONC. HEAD
- 345B PRECAST CONC. SILL
- 345C PRECAST CONC. JAMB
- 840A ALUM. STOREFRONT
- 851A ALUMINUM WINDOW
- 849A MOTORIZED ROLLER SHADE W/ MAN. STD. POCKET FOR MOUNTING

DOOR & FRAME SCHEDULE

DOOR NO.	DOOR TYPE	DOOR SIZE	CONSTRUCTION	UNDER CUT	DOOR FINISH	FRAME TYPE	FRAME FINISH	UL DES.	HOURL	HEAD	JAMB	SILL	DETAILS
L61A	A	3068 x 84	S.C. WOOD	---	STAINED	3	PTD.	---	11	5	5	---	---
L61B	E	(2) 3068 x 84	S.C. WOOD	---	STAINED	13	PTD.	---	13	5	5	---	---
L61C	A	3068 x 130	S.C. WOOD	---	STAINED	3	PTD.	---	19	5	5	---	---
L62A	A	3070 x 84	H.M. INS. FLUSH	---	PTD.	13	PTD.	---	5	3	3	---	---
L62B	A	3068 x 84	S.C. WOOD	---	STAINED	3	PTD.	---	11	5	5	---	---
L63A	F	3068 x 130	CHAIN LINK FENCE	---	GALV. STL.	3	PTD.	---	8	5	5	---	---
L63B	A	3068 x 130	S.C. WOOD	---	STAINED	3	PTD.	---	19	5	5	---	---
L64A	A	3068 x 84	S.C. WOOD	---	STAINED	3	PTD.	---	24	5	5	---	---
L64B	A	3068 x 84	S.C. WOOD	---	STAINED	3	PTD.	---	11	5	5	---	---
L67A	A	3068 x 84	S.C. WOOD	3/4"	STAINED	3	PTD.	45 MIN.	11	5	5	---	---
L67B	A	3068 x 84	S.C. WOOD	---	STAINED	3	PTD.	45 MIN.	11	5	5	---	---
L68	A	3068 x 84	S.C. WOOD	3/4"	STAINED	3	PTD.	---	18	5	5	---	---
L69	A	3068 x 84	S.C. WOOD	3/4"	STAINED	3	PTD.	---	18	5	5	---	---
L10	A	3068 x 84	S.C. WOOD	3/4"	STAINED	3	PTD.	---	18	5	5	---	---
L11	A	3070 x 84	H.M. INS. FLUSH	---	PTD.	13	PTD.	---	6	3	3	---	---
L12	A	3068 x 84	S.C. WOOD	---	STAINED	3	PTD.	90 MIN.	11	1	1	---	---
L13	A	3070 x 84	H.M. INS. FLUSH	---	PTD.	NOTE 6.0	PREFIN.	---	5	---	---	---	---
L16A	A	3071-1/2 x 84	H.M. INS. FLUSH	---	PTD.	13	PTD.	---	5	3	3	---	---
L16B	E	3068 x 84	S.C. WOOD	---	STAINED	13	PTD.	60 MIN.	10	1	1	---	---
L17	G	(2) 3070 x 84	H.M. INS. FLUSH	---	PTD.	2	PTD.	---	3	3	3	---	---
101A	B	(3) 3070 x 84	S.C. WOOD	---	STAINED	1	PTD.	---	12	1	1	---	---
101B	B	(3) 3070 x 84	S.C. WOOD	---	STAINED	1	PTD.	---	12	1	1	---	---
101C	C	(2) 3070 x 84	S.C. WOOD	---	STAINED	2	PTD.	---	14	1	1	---	---
101D	A	(2) 3070 x 84	S.C. WOOD	---	STAINED	2	PTD.	45 MIN.	9	2	2	---	---
101E	A	(2) 3070 x 84	H.M. INS. FLUSH	---	PTD.	1	PTD.	---	4	3	3	---	---
101F	A	(2) 3068 x 84	S.C. WOOD	---	STAINED	2	PTD.	45 MIN.	9	3 (2M)	3 (2M)	---	---
103	A	3070 x 84	H.M. INS. FLUSH	---	PTD.	13	PTD.	---	1	8	8	---	---
104	A	3070 x 84	S.C. WOOD	3/4"	STAINED	13	PTD.	---	25	4	4	---	---
105	A	3070 x 84	S.C. WOOD	3/4"	STAINED	13	PTD.	---	25	4	4	---	---
105A	D	(2) 3070 x 84	ALUM.GLASS	---	PREFIN.	NOTE 6.0	PREFIN.	---	1	---	---	---	---
105B	D	(2) 3070 x 84	ALUM.GLASS	---	PREFIN.	NOTE 6.0	PREFIN.	---	1	---	---	---	---
111A	D	(2) 3070 x 84	ALUM.GLASS	---	PREFIN.	NOTE 6.0	PREFIN.	---	1	---	---	---	---
111B	D	(2) 3070 x 84	ALUM.GLASS	---	PREFIN.	NOTE 6.0	PREFIN.	---	2	---	---	---	---
113A	D	(2) 3070 x 84	ALUM.GLASS	---	PREFIN.	NOTE 6.0	PREFIN.	---	1	---	---	---	---
113B	D	(2) 3070 x 84	ALUM.GLASS	---	PREFIN.	NOTE 6.0	PREFIN.	---	2	---	---	---	---
114A	D	(2) 3070 x 84	ALUM.GLASS	---	PREFIN.	NOTE 6.0	PREFIN.	---	1	---	---	---	---
114B	D	(2) 3070 x 84	ALUM.GLASS	---	PREFIN.	NOTE 6.0	PREFIN.	---	1	---	---	---	---
115A	E	3070 x 84	S.C. WOOD	---	STAINED	13	PTD.	---	22	5	5	---	---
115B	E	3070 x 84	S.C. WOOD	---	STAINED	4	PTD.	---	22	4	4	---	---
115C	---	---	---	---	---	5	PTD.	---	6	6	6	---	---
115D	---	---	---	---	---	6	PTD.	---	6	6	6	---	---
116	E	3068 x 84	S.C. WOOD	---	STAINED	3	PTD.	60 MIN.	10	1	1	---	---
117A	E	3070 x 84	S.C. WOOD	---	STAINED	13	PTD.	---	21	5	5	---	---
117B	E	3070 x 84	S.C. WOOD	---	STAINED	13	PTD.	---	24	5	5	---	---
117C	---	---	---	---	---	5	PTD.	---	6	6	6	---	---
118	A	3070 x 84	S.C. WOOD	3/4"	STAINED	13	PTD.	---	22	5	5	---	---
119A	E	3070 x 84	S.C. WOOD	---	STAINED	4	PTD.	---	22	4	4	---	---
119B	---	---	---	---	---	6	PTD.	---	6	6	6	---	---
121	E	3068 x 84	S.C. WOOD	---	STAINED	13	PTD.	---	22	4	4	---	---
122	E	3068 x 84	S.C. WOOD	3/4"	STAINED	3	PTD.	---	20	5	5	---	---
123A	E	3068 x 84	S.C. WOOD	---	STAINED	1	PTD.	---	22	5	5	---	---
123B	---	---	---	---	---	8	PTD.	---	5	5	5	---	---
123C	---	---	---	---	---	10	PTD.	---	5	5	5	---	---
124A	E	3068 x 84	S.C. WOOD	---	STAINED	5	PTD.	---	21	5	5	---	---
124B	---	---	---	---	---	14	PTD.	---	5	5	5	---	---
124C	---	---	---	---	---	14	PTD.	---	5	5	5	---	---
125	A	3068 x 84	S.C. WOOD	3/4"	STAINED	3	PTD.	---	20	5	5	---	---
126	E	3610 x 84	S.C. WOOD	---	STAINED	2	PTD.	---	15	4	4	---	---
127A	E	3068 x 84	S.C. WOOD	---	STAINED	3	PTD.	---	21	5	5	---	---
127B	E	3068 x 84	S.C. WOOD	---	STAINED	3	PTD.	---	21	5	5	---	---
127C	C	(2) 3070 x 84	S.C. WOOD	---	STAINED	2	PTD.	---	16	4	4	---	---
128	E	3068 x 84	S.C. WOOD	3/4"	STAINED	3	PTD.	---	22	5	5	---	---
129A	E	3068 x 84	S.C. WOOD	---	STAINED	3	PTD.	---	21	5	5	---	---
129B	E	3068 x 84	S.C. WOOD	---	STAINED	3	PTD.	---	21	5	5	---	---
129C	E	3068 x 84	S.C. WOOD	---	STAINED	3	PTD.	---	21	5	5	---	---
130	A	3068 x 84	S.C. WOOD	3/4"	STAINED	3	PTD.	---	22	5	5	---	---
131	---	---	---	---	---	---	---	---	---	---	---	---	---
132	A	3068 x 84	S.C. WOOD	3/4"	STAINED	3	PTD.	---	22	5	5	---	---
133	A	3068 x 84	S.C. WOOD	3/4"	STAINED	3	PTD.	---	20	5	5	---	---
134	A	3068 x 84	S.C. WOOD	3/4"	STAINED	3	PTD.	---	18	5	5	---	---
135	E	3068 x 84	S.C. WOOD	---	STAINED	3	PTD.	---	22	5	5	---	---
136	A	3068 x 84	S.C. WOOD	3/4"	STAINED	3	PTD.	---	23	5	5	---	---
137A	A	3070 x 84	H.M. INS. FLUSH	---	PTD.	13	PTD.	---	1	8	8	---	---
137B	A	3070 x 84	H.M. INS. FLUSH	---	PTD.	13	PTD.	90 MIN.	18	2	2	---	---
138	A	3068 x 84	S.C. WOOD	---	STAINED	3	PTD.	---	20	5	5	---	---
141	A	3070 x 84	S.C. WOOD	3/4"	STAINED	13	PTD.	---	18	4	4	---	---
R201	A	3040 x 84	H.M. FLUSH	---	PTD.	5	PTD.	---	26	10	10	---	---
R202	A	3040 x 84	H.M. FLUSH	---	PTD.	5	PTD.	---	26	10	10	---	---

HEAD, JAMB, AND SILL DETAILS SCALE: 1/2"=1'-0"



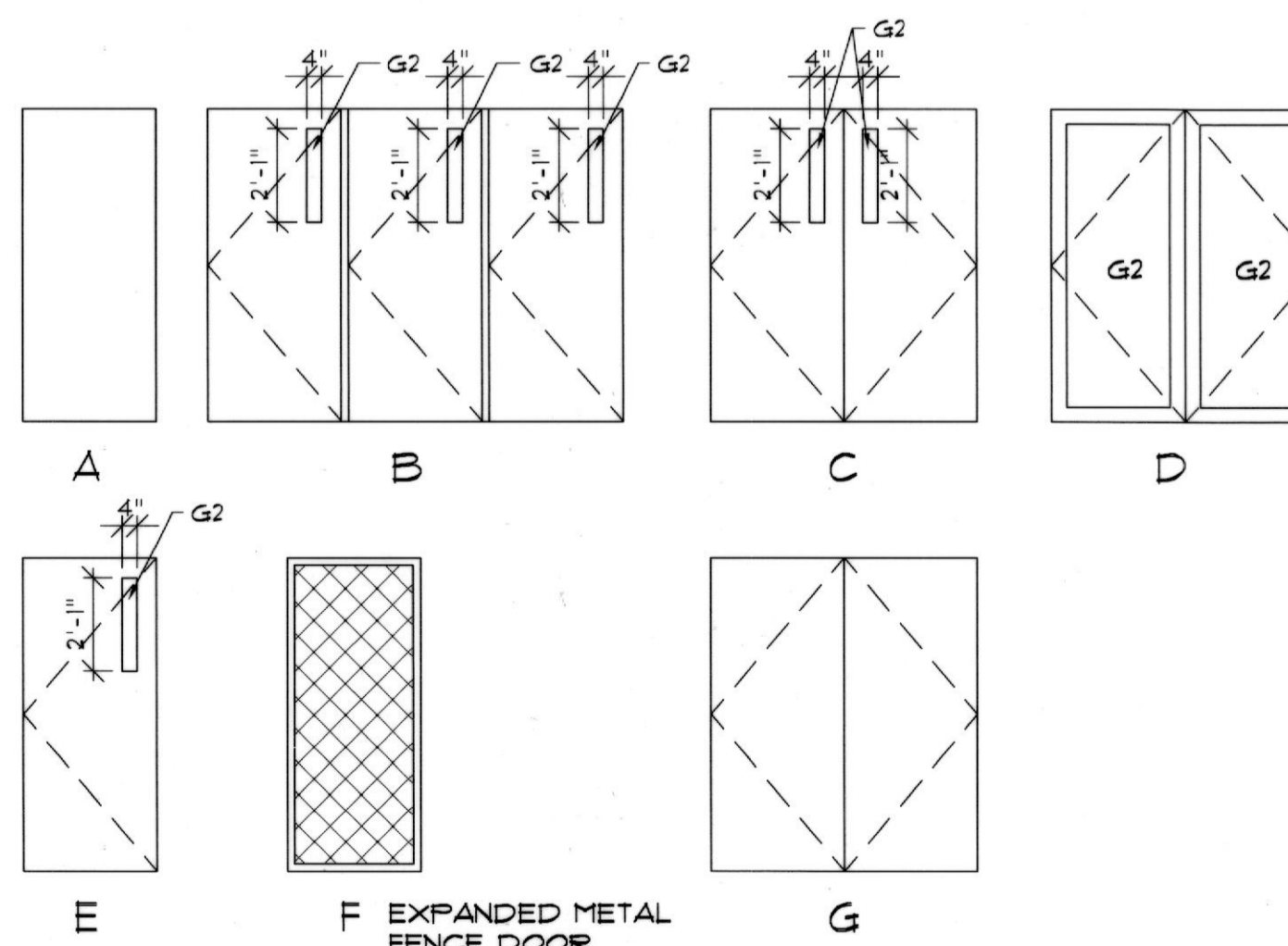
DOOR & FRAME SCHEDULE NOTES

- 1.0 3070 x 84 INDICATES 3'-0" WIDE x 7'-0" HIGH x 3/4" THICK DOOR.
- 2.0 FOR ALUMINUM STOREFRONT 4 DOORS SEE 8504 FOR FRAME ELEVATIONS AND EXACT DOOR OPENING SIZES.
- 3.0 FOR ALL FRAME FINISHES, SEE A902
- 4.0 NOT USED
- 5.0 SEE A904 FOR GLASS SCHEDULE
- 6.0 SEE A904 & A905 FOR STOREFRONT AND CURTAINWALL, SEE A501 FOR LAYOUT

SIGNAGE

- 1.0 PROVIDE SIGNS ON DOORS FOR ANY DOOR THAT FACES A CORRIDOR OR FOOL.

DOOR TYPES SCALE: 1/4"=1'-0"



**RUBELING & ASSOCIATES, INC.**  
ARCHITECTURE  
INTERIOR DESIGN  
401 JEFFERSON AVENUE  
TOWSON, MARYLAND 21286-5308  
410-337-2898  
FAX 410-337-2874

SPORT AND FITNESS CENTER  
NOTRE DAME PREPARATORY SCHOOL  
815 HAMPTON LANE  
TOWSON, MARYLAND 21286

REVISIONS:

NO.	DESCRIPTION	DATE

LAST REV.:  
PROJECT NO.: 02-031  
DATE: 6-27-03  
SCALE: AS NOTED  
TITLE: DOOR & WALL TYPE SCHEDULE

SHEET:

A  
901