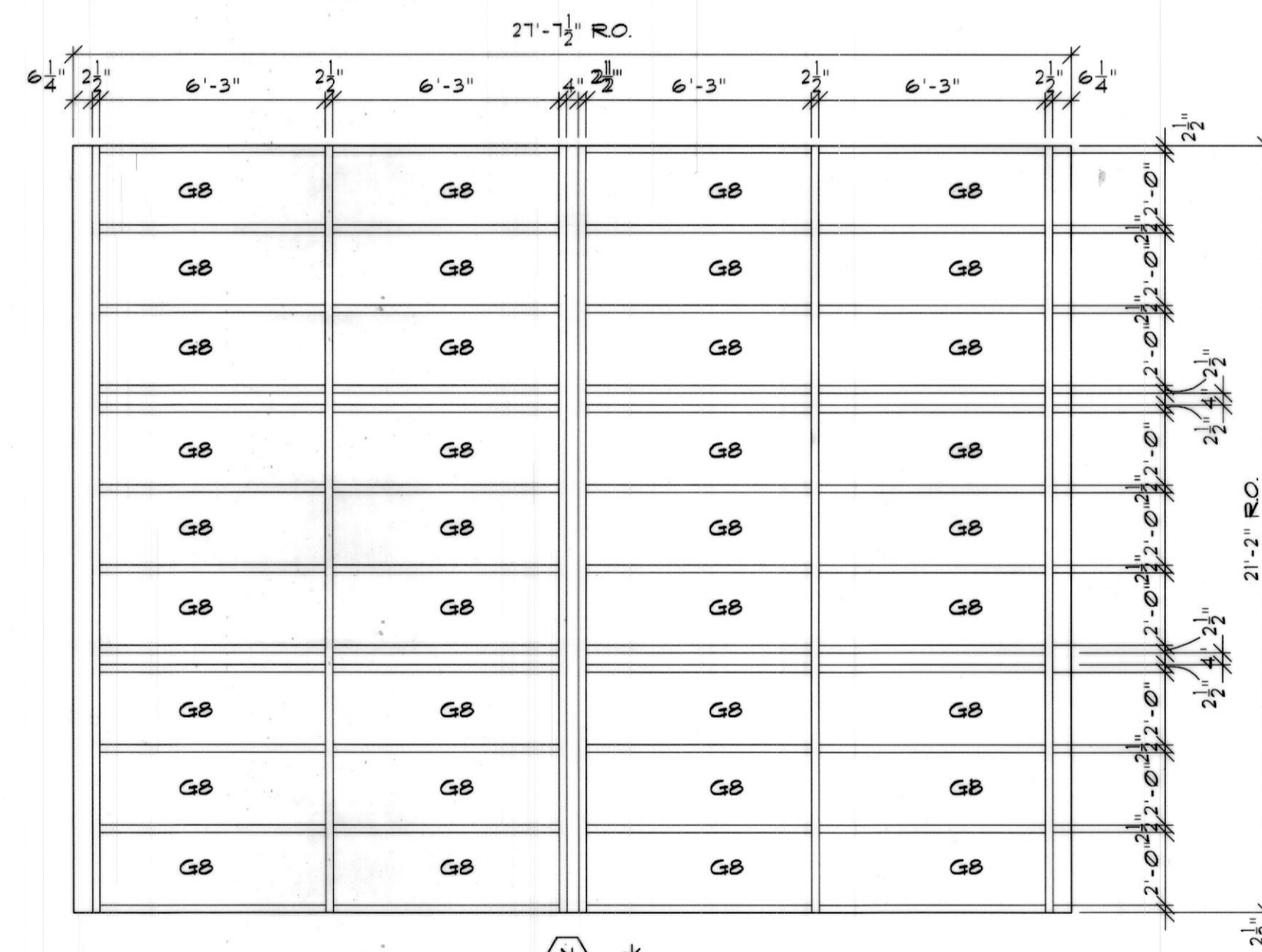
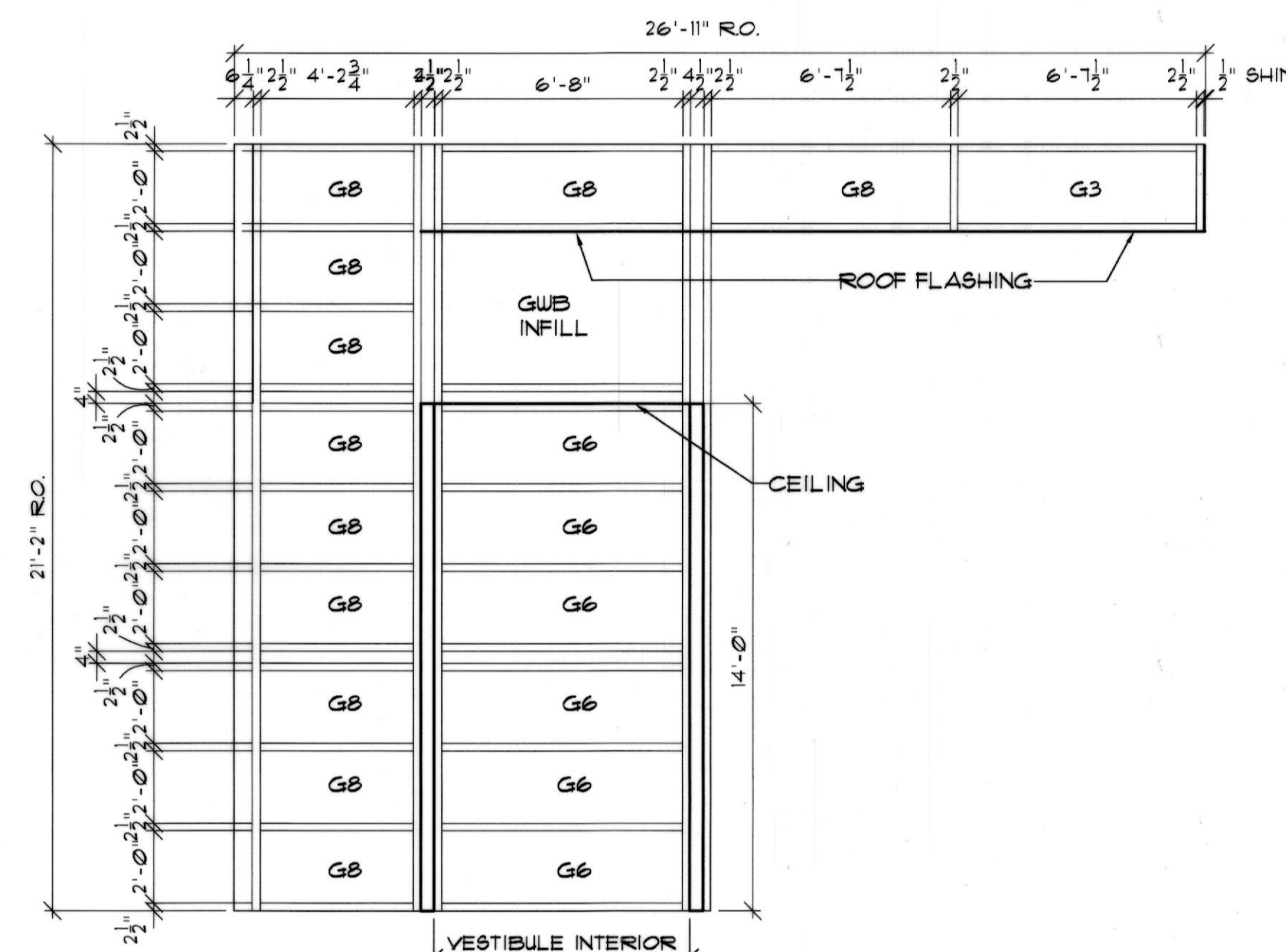
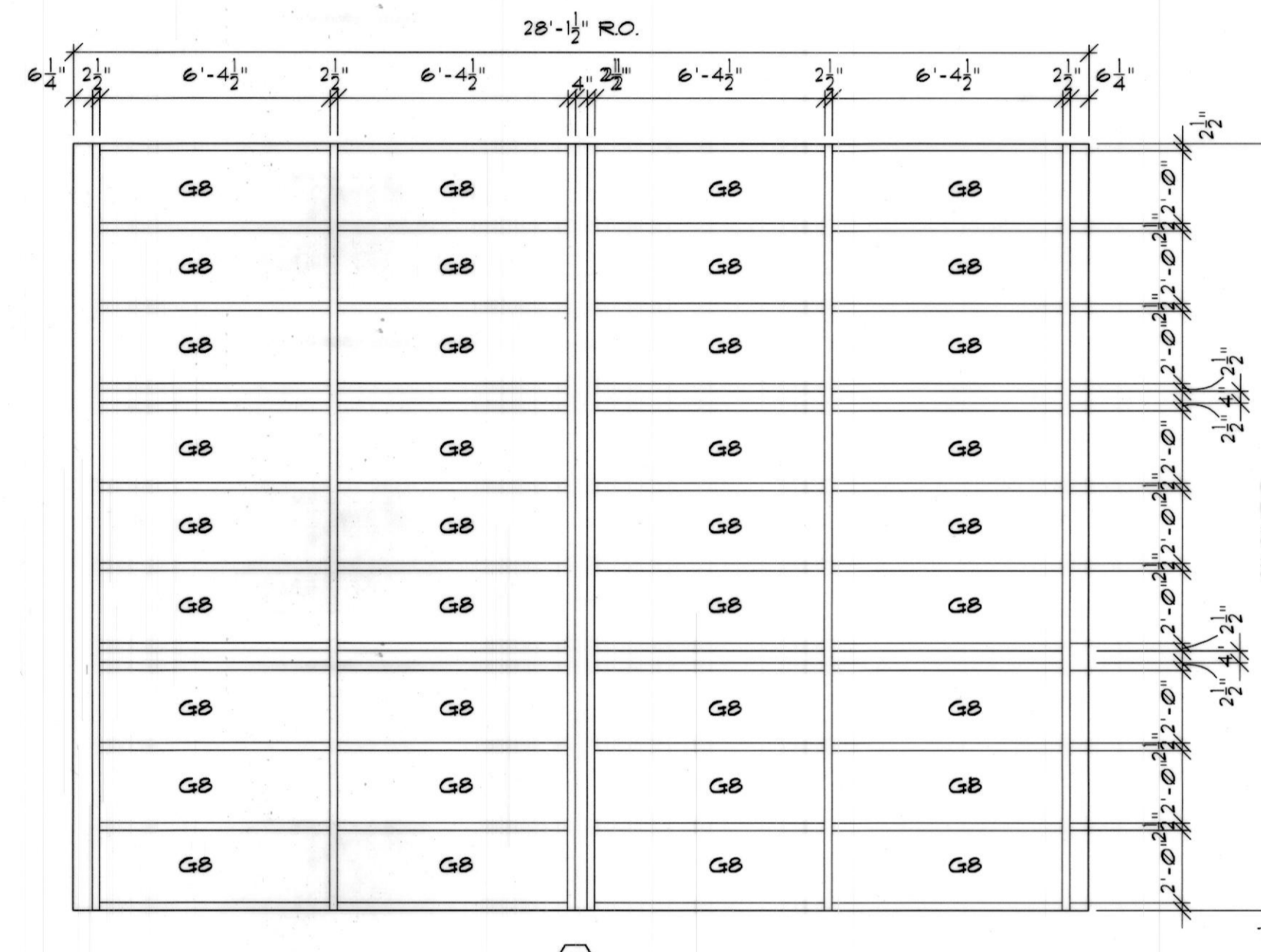
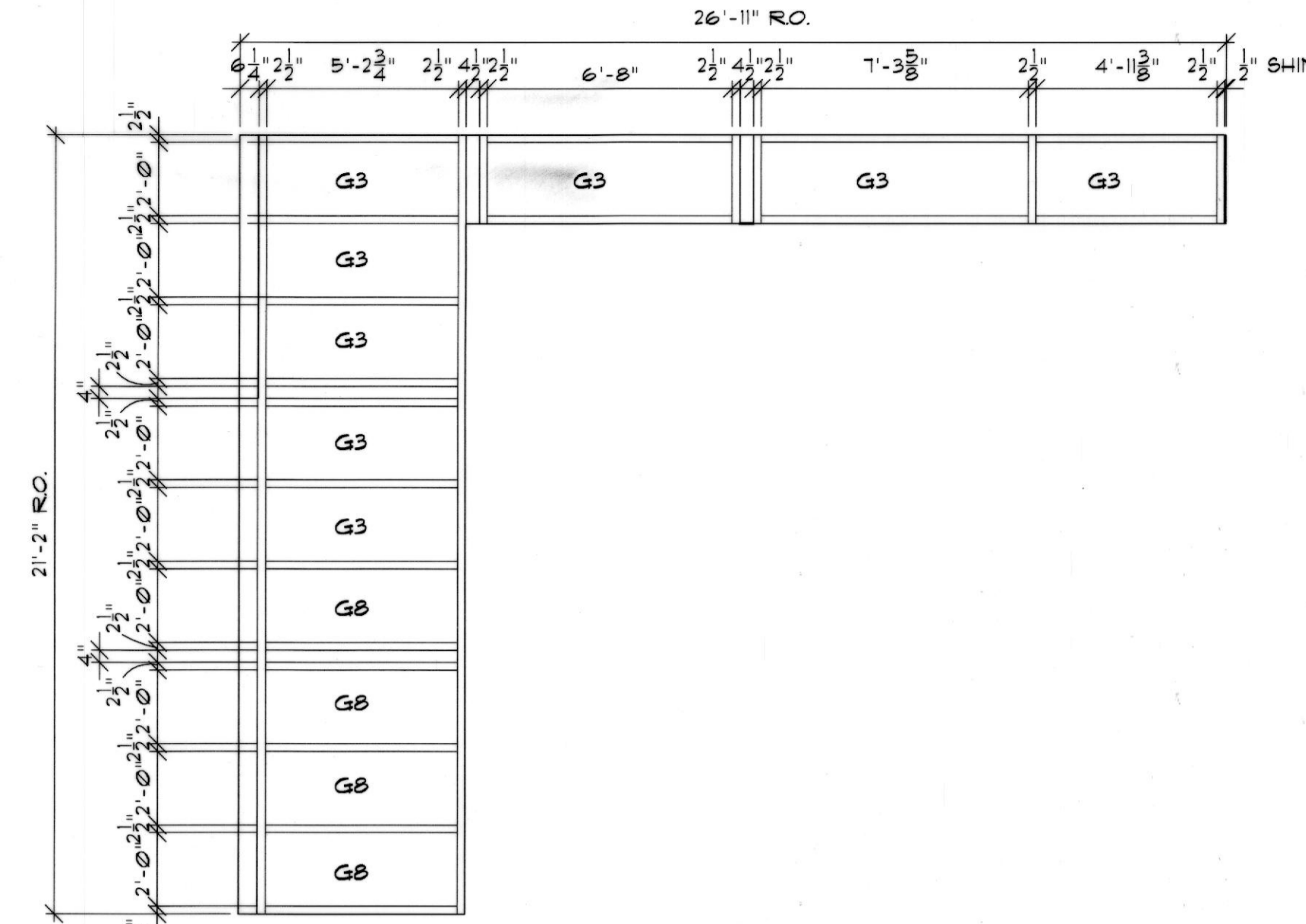
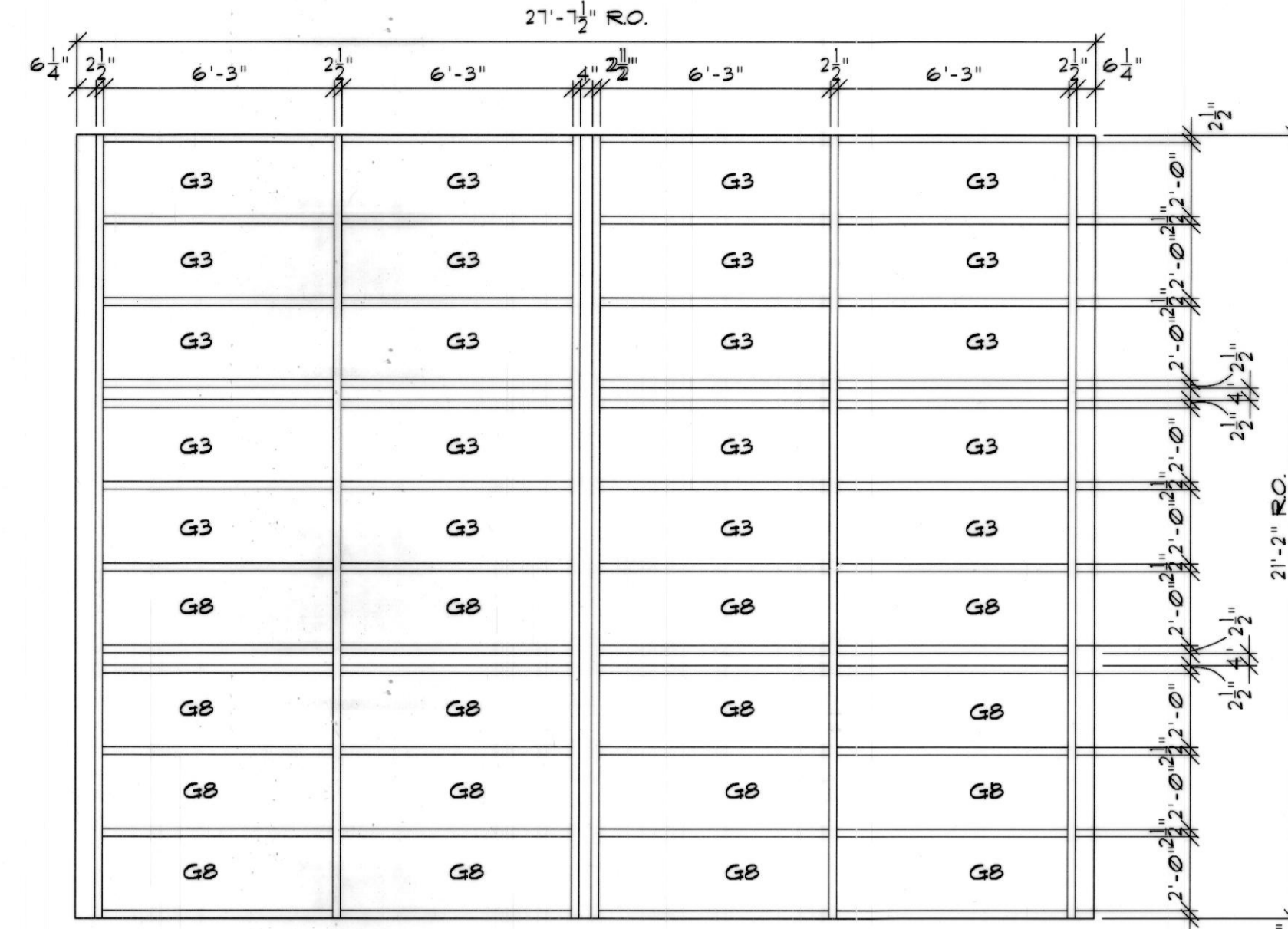
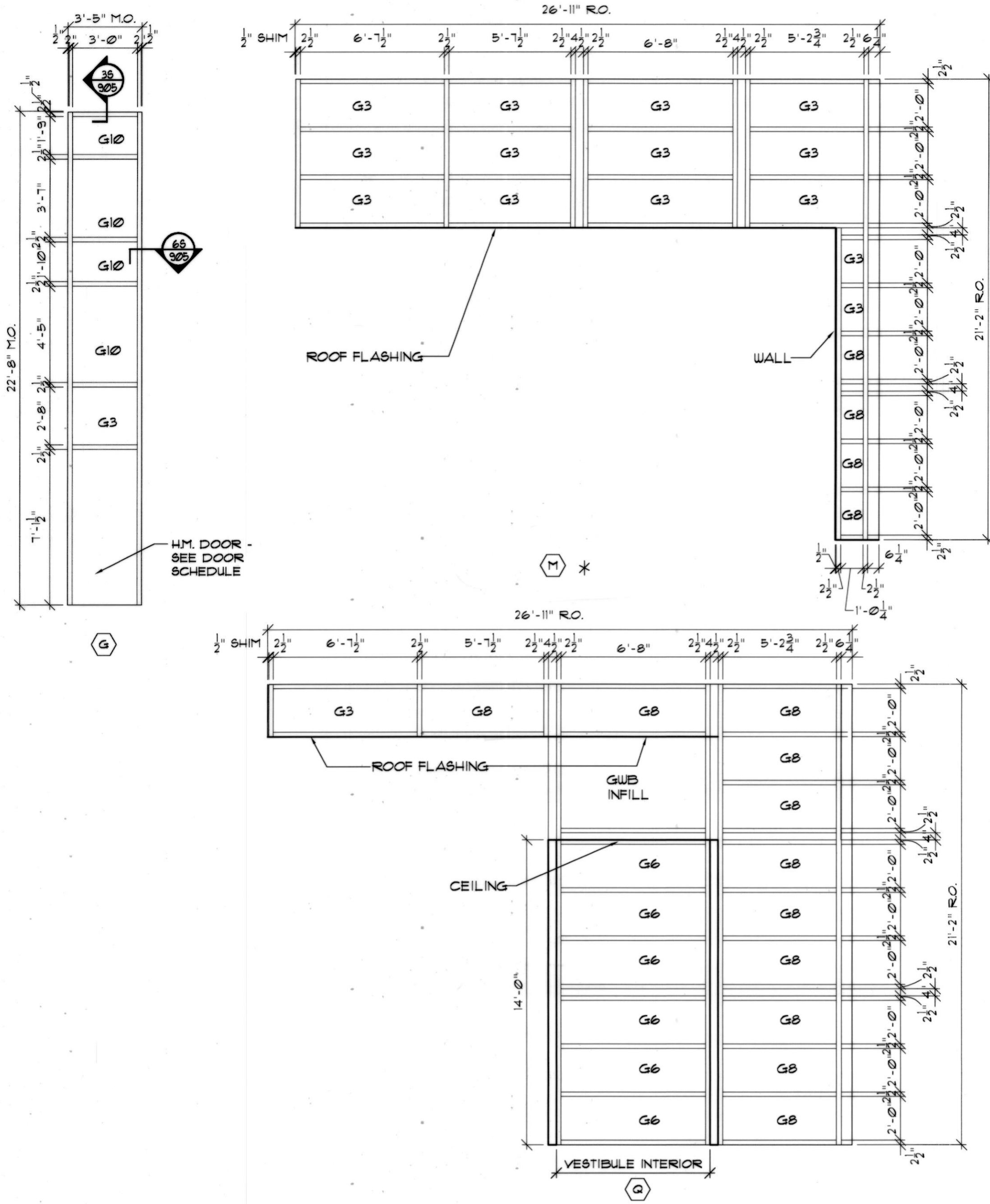
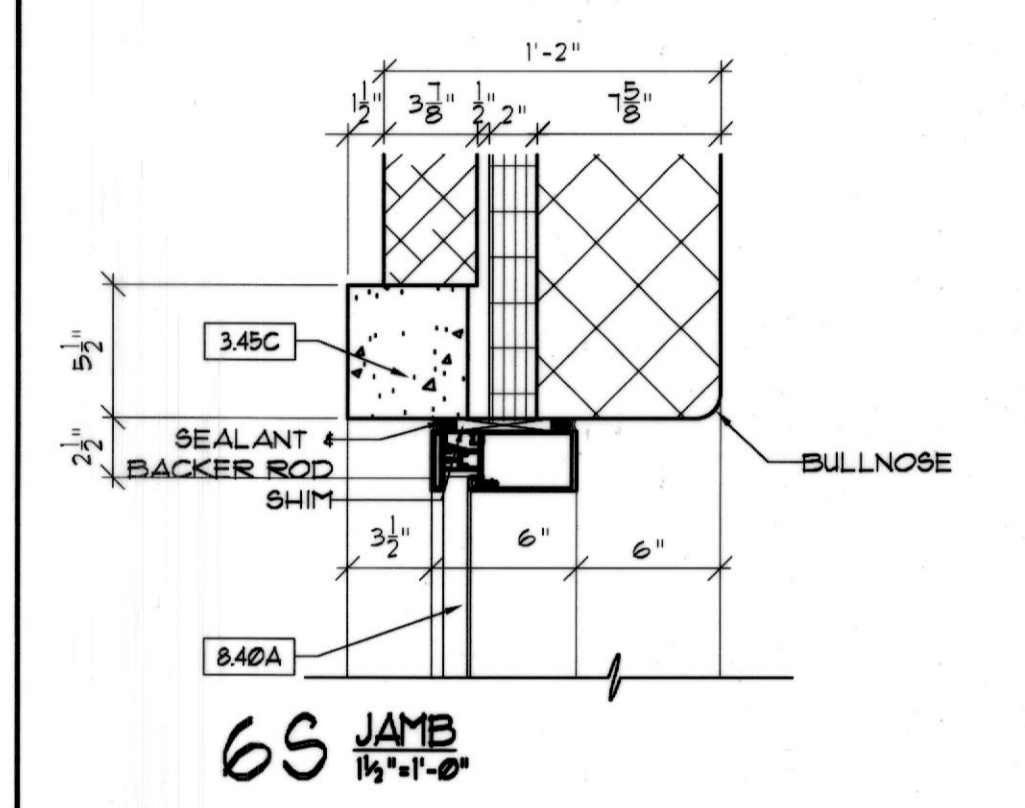
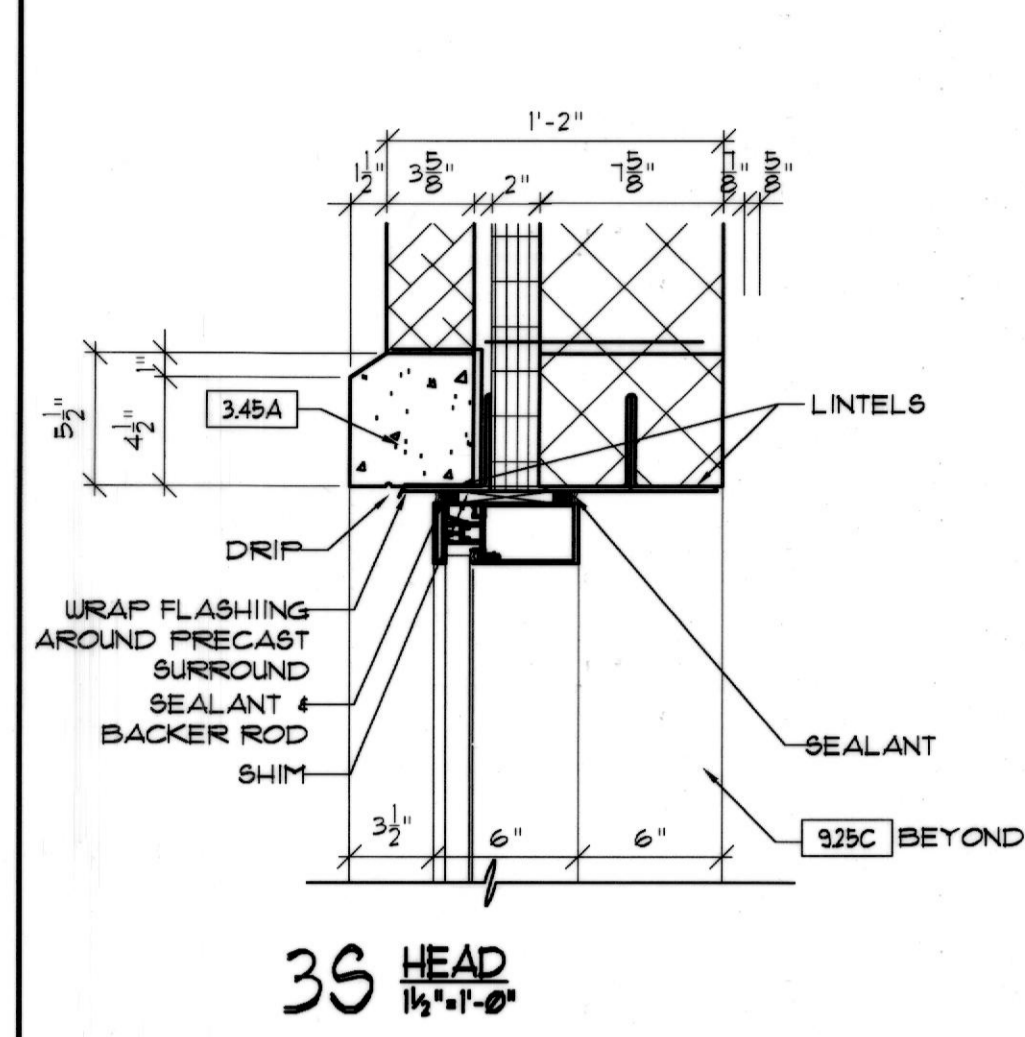


CURTAIN WALL

SCALE: 1/4"=1'-0"

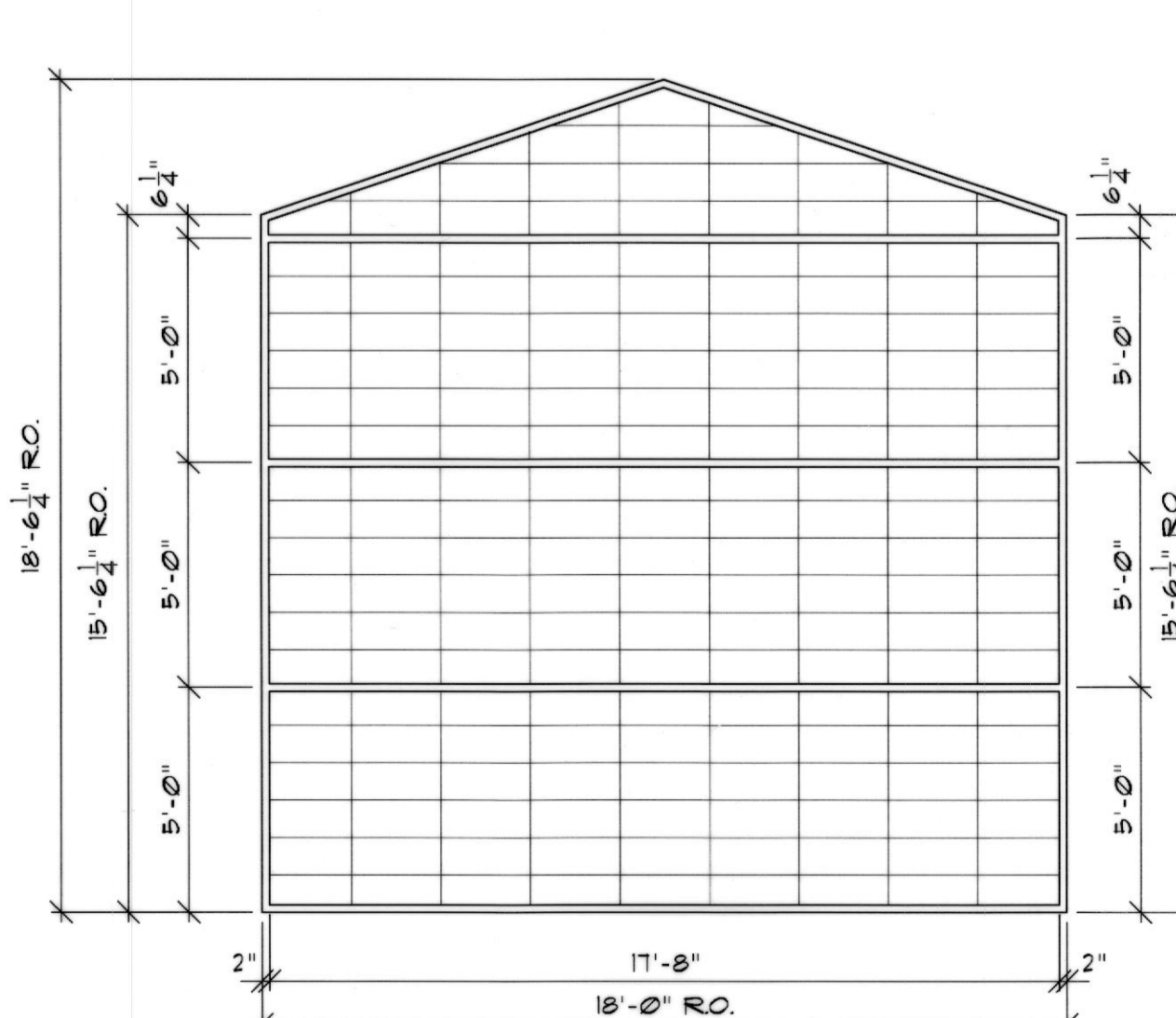
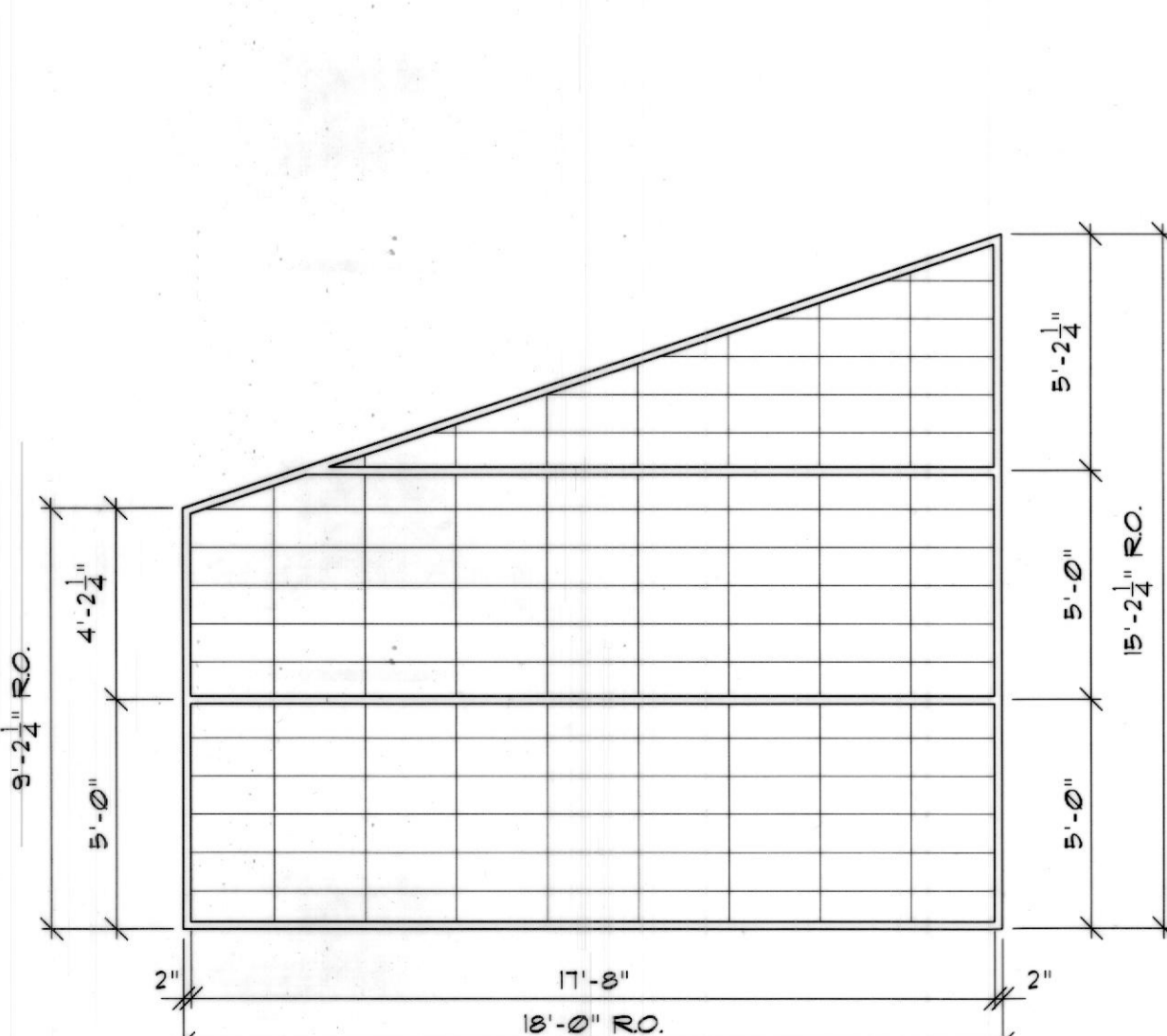
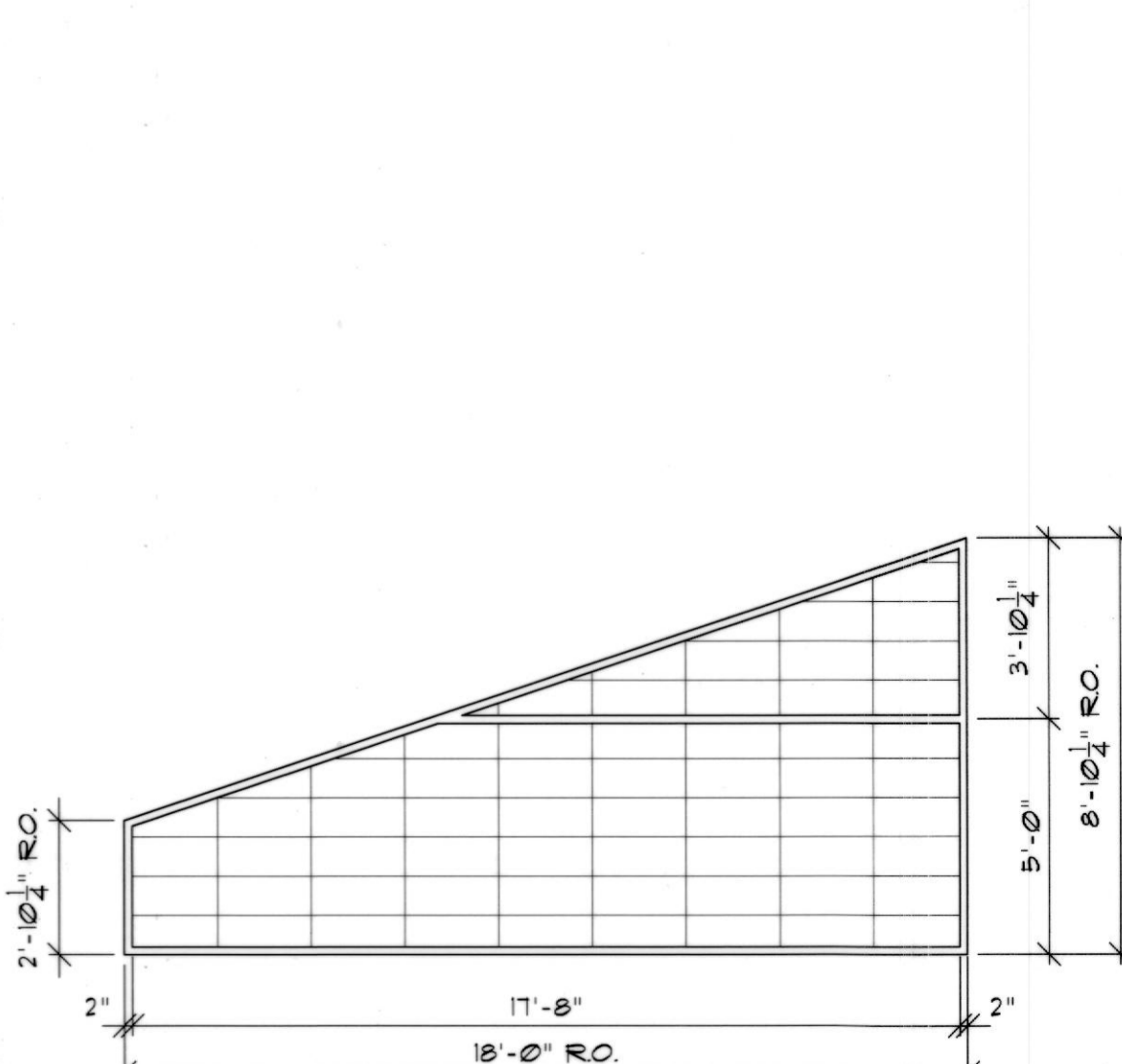
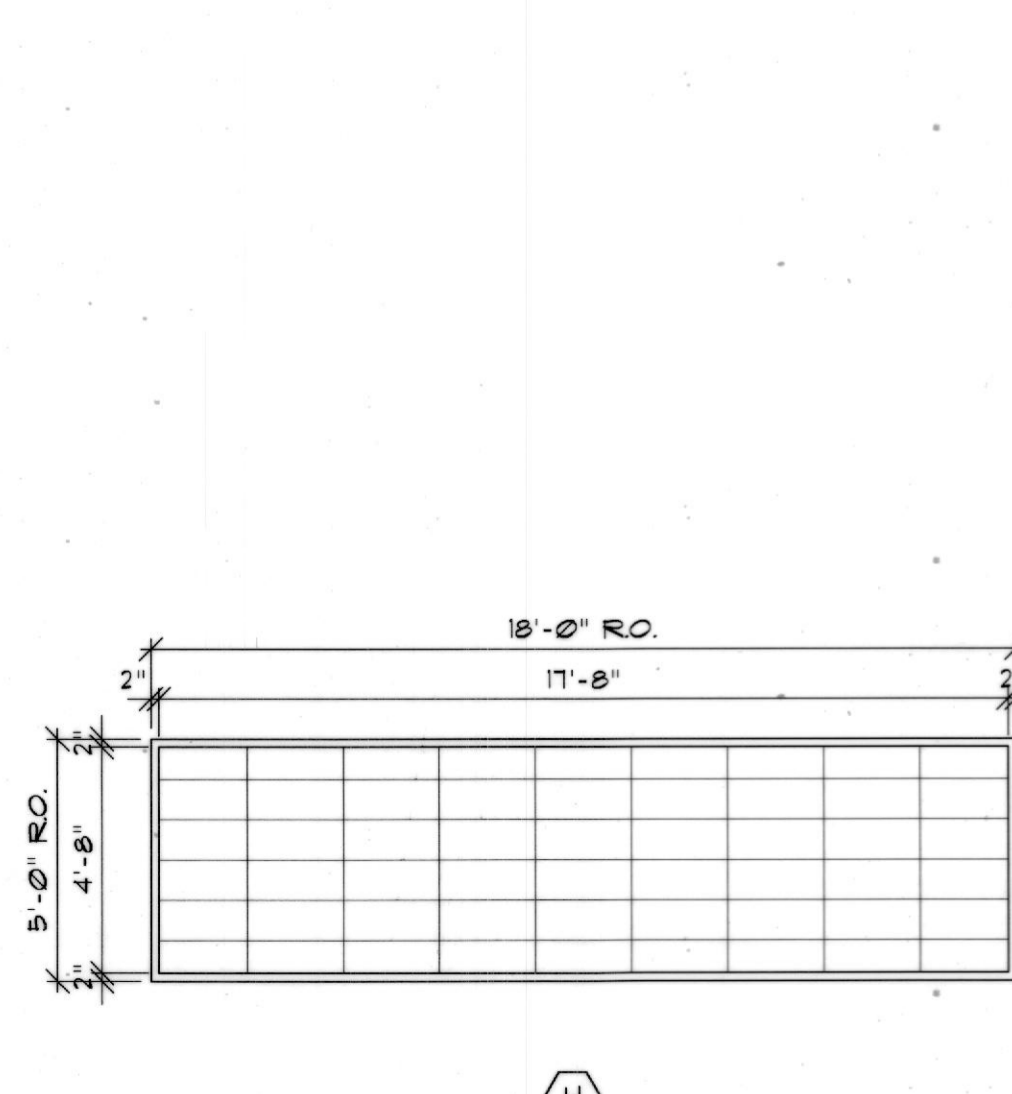


HEAD & JAMB DETAILS



TRANSLUCENT WALL PANELS

SCALE: 1/4"=1'-0"

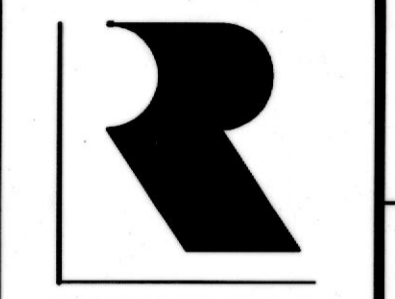


GLAZING SCHEDULE

- * PROVIDE HOR. LOUVERS BLINDS THESE WINDOWS
- G1 CLEAR INSULATING
- G2 TEMPERED LAMINATED INSULATING
- G3 INSULATING SPANDREL
- G4 TEMPERED LAMINATED INSULATING FROSTED
- G5 CLEAR
- G6 CLEAR TEMPERED
- G7 NOT USED
- G8 TEMPERED HEAT MIRRORED INSULATING
- G9 NOT USED
- G10 TEMPERED INSULATING
- G11 TEMPERED LAMINATED

DRAWING NOTES

- 345A PRECAST CONC. HEAD
- 345B PRECAST CONC. SILL
- 345C PRECAST CONC. JAMB
- 845A ALUM. STOREFRONT
- 852A ALUMINUM WINDOW
- 245A MOTORIZED ROLLER SHADE W/ MAN. STD. POCKET FOR MOUNTING



RUBELING & ASSOCIATES, INC.
ARCHITECTURE
INTERIOR DESIGN
401 JEFFERSON AVENUE
TOWSON, MARYLAND 21286-5308
410-337-3888
FAX: 410-337-8974

SPORT AND FITNESS CENTER
NOTRE DAME PREPARATORY SCHOOL
815 HAMPTON LANE
TOWSON, MARYLAND 21286

REVISIONS:

NO.	DESCRIPTION	DATE
RECORD DUGG.		05/05/03

LAST REV.:
PROJECT NO.: 02-031
DATE: 6-21-03
SCALE: AS NOTED
TITLE:
WINDOW
SCHEDULE

SHEET:
A

905