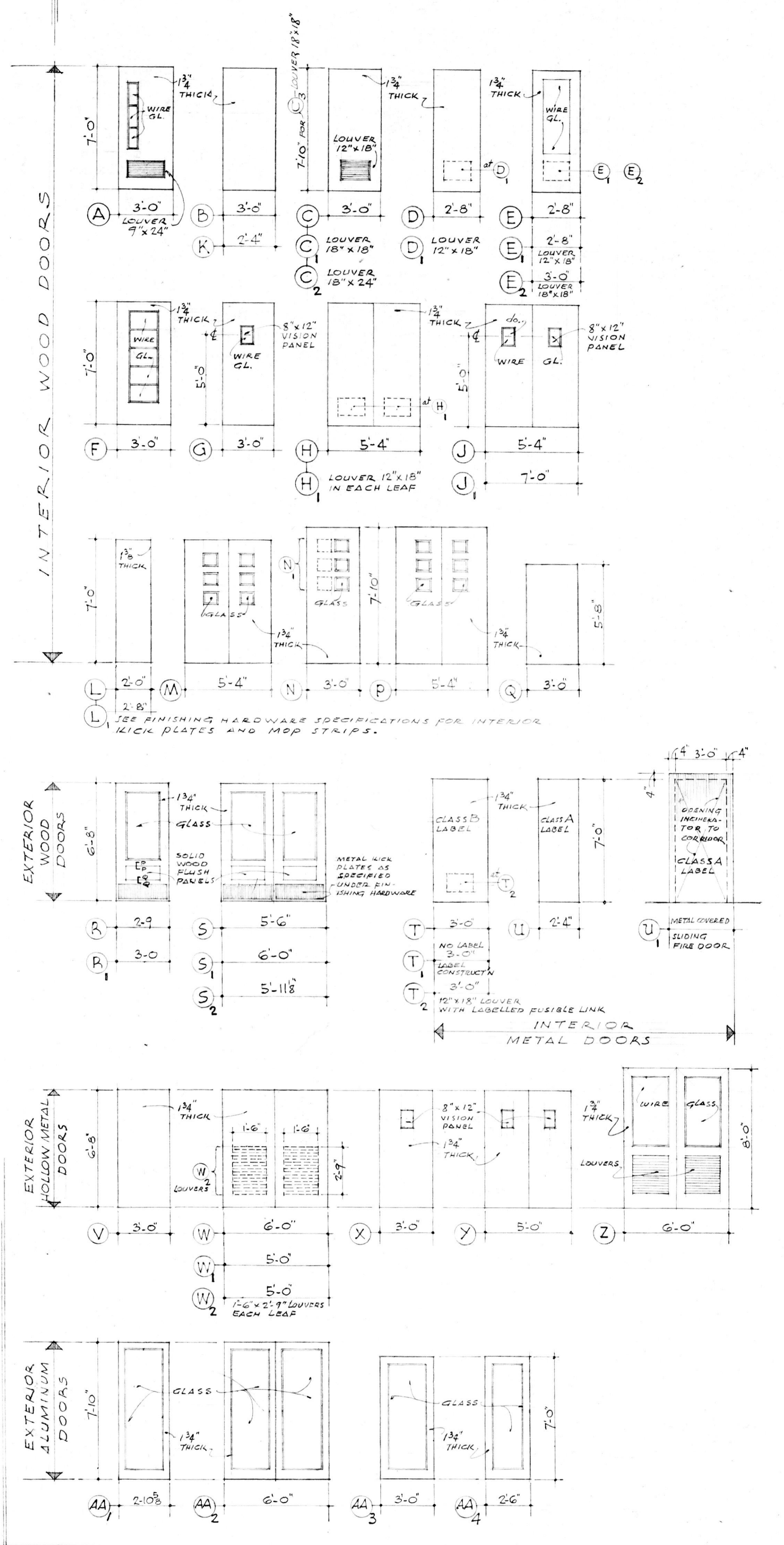


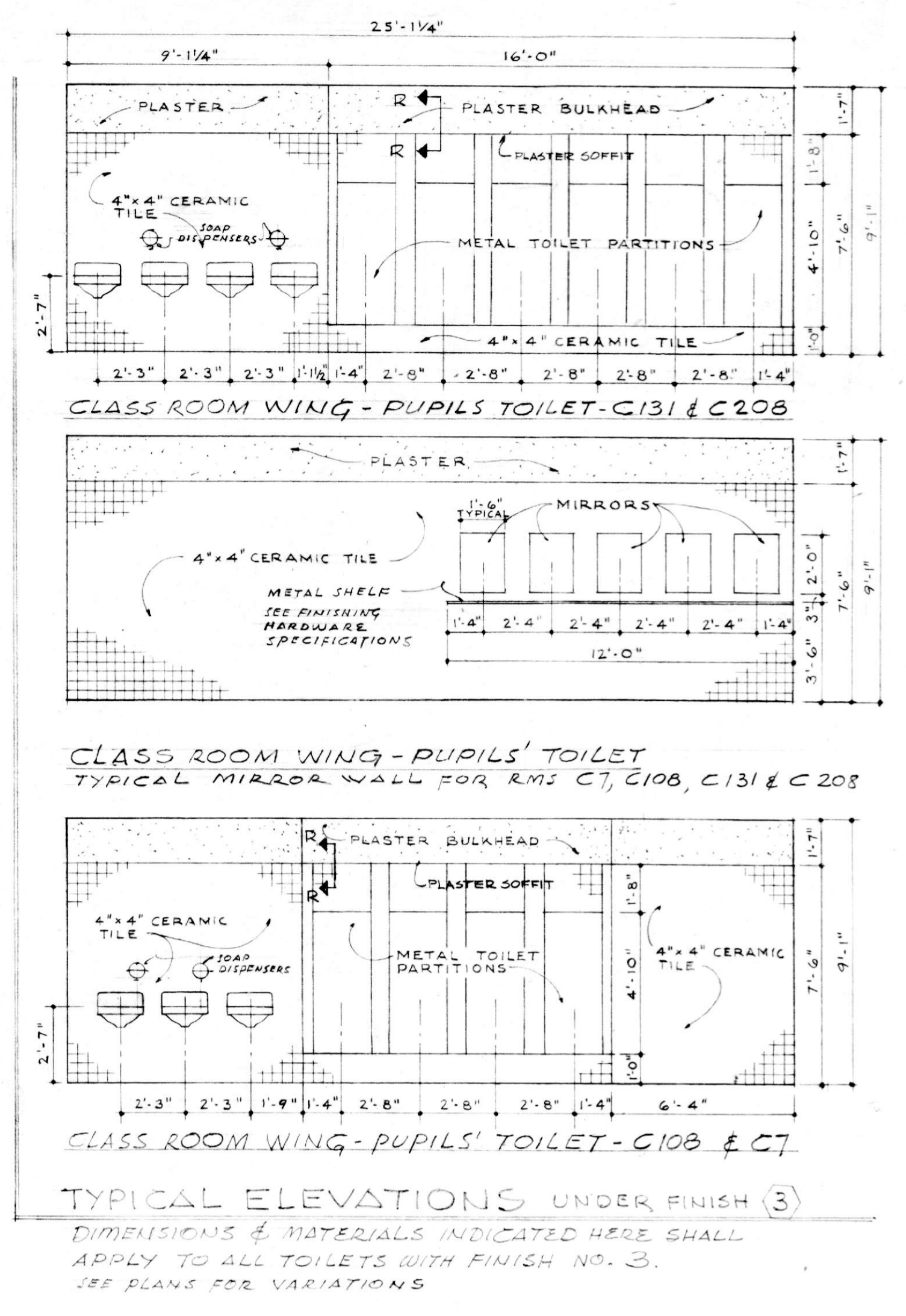
SCHEDULE OF INTERIOR & EXTERIOR DOOR TYPES



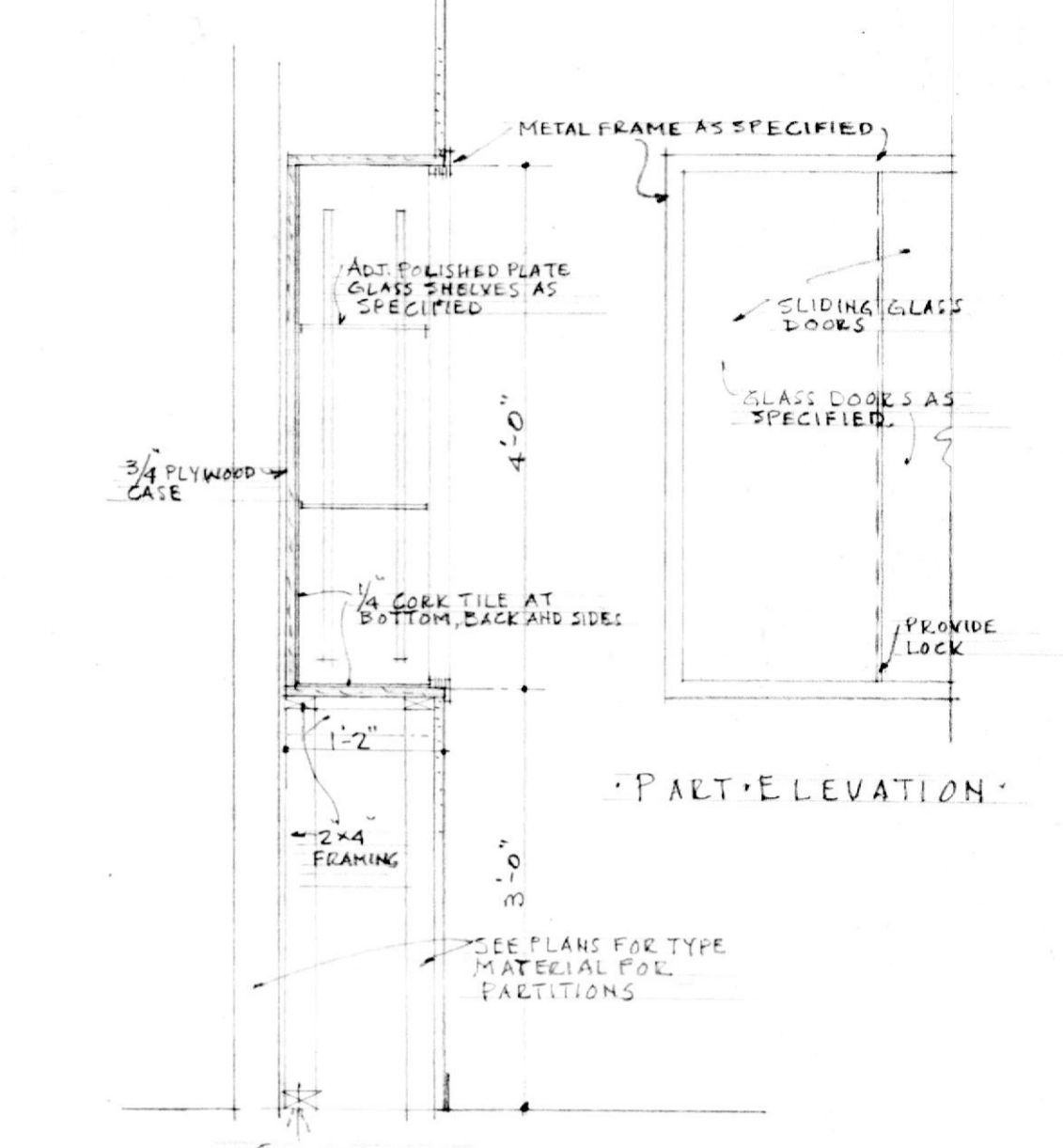
INTERIOR WOOD DOORS

EXTERIOR WOOD DOORS

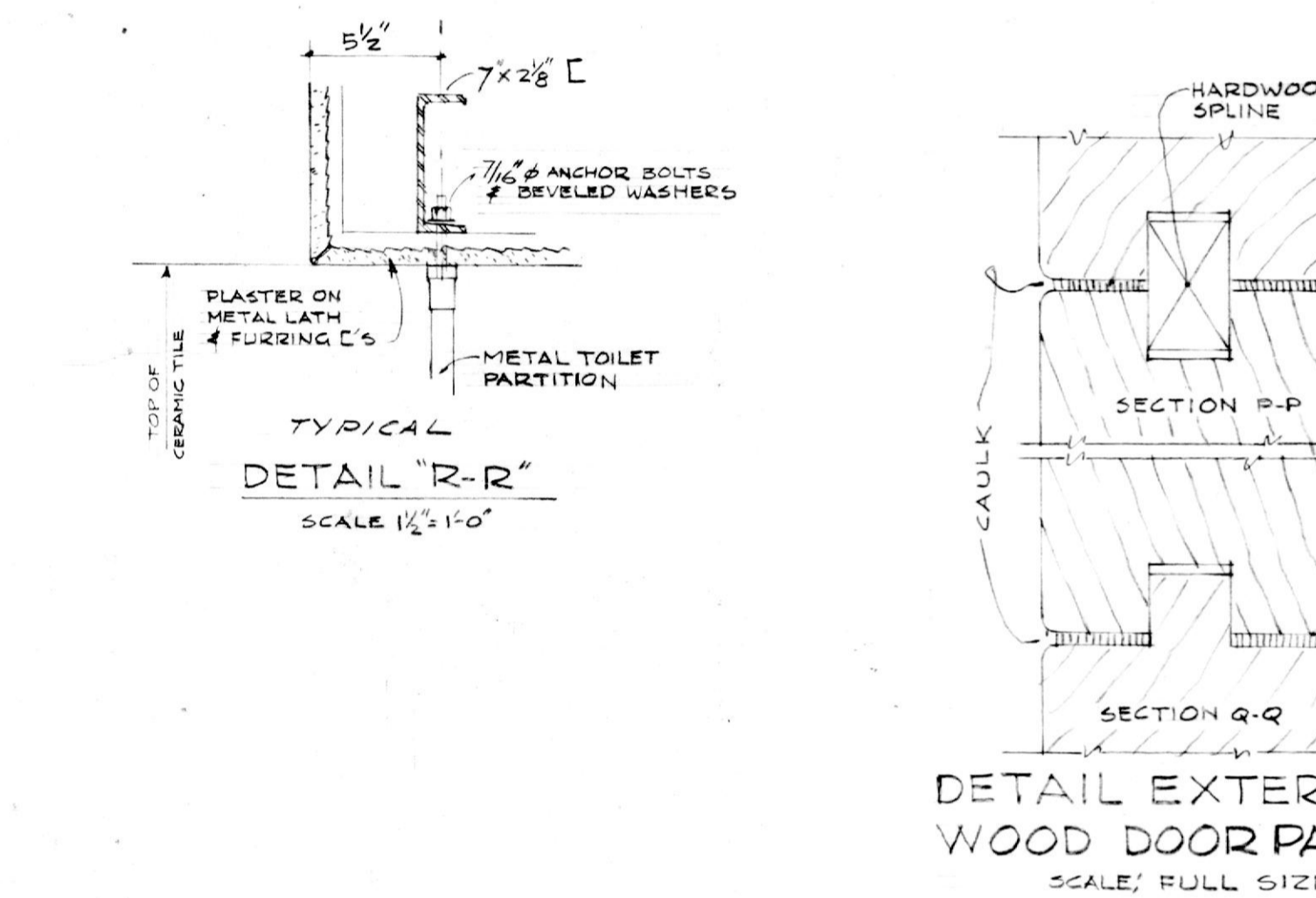
EXTERIOR ALUMINUM DOORS



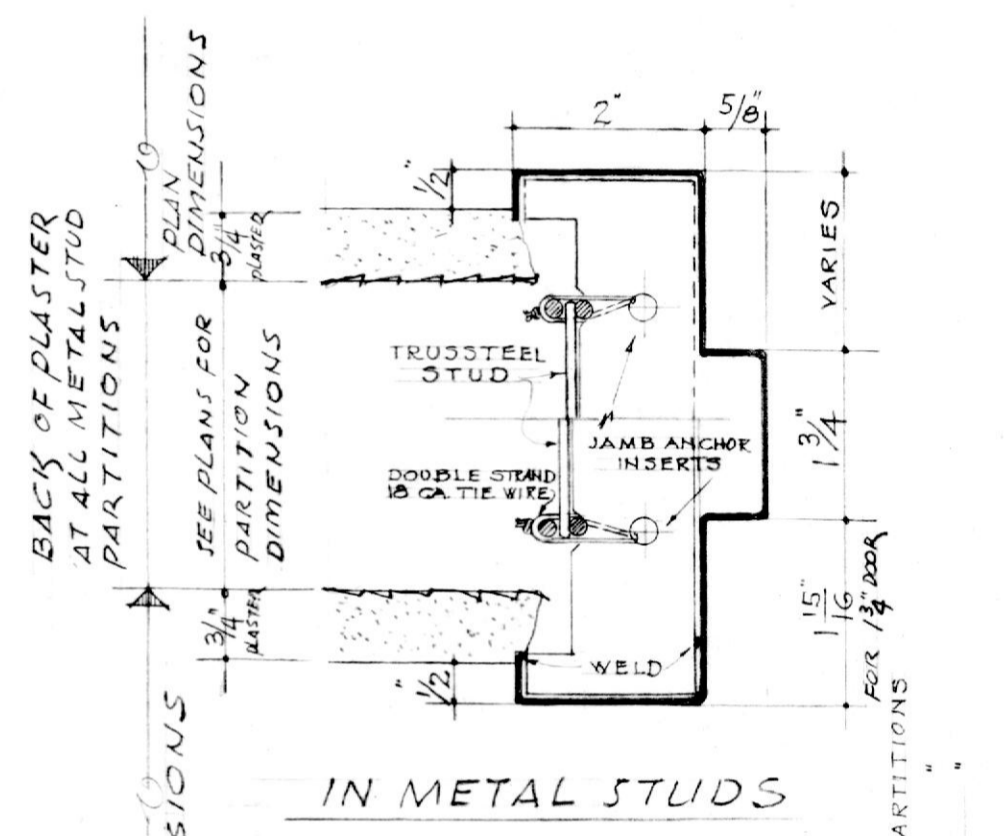
JUNIOR'S CLOSETS FINISH NO. 2
SMALL TOILETS FINISH NO. 7



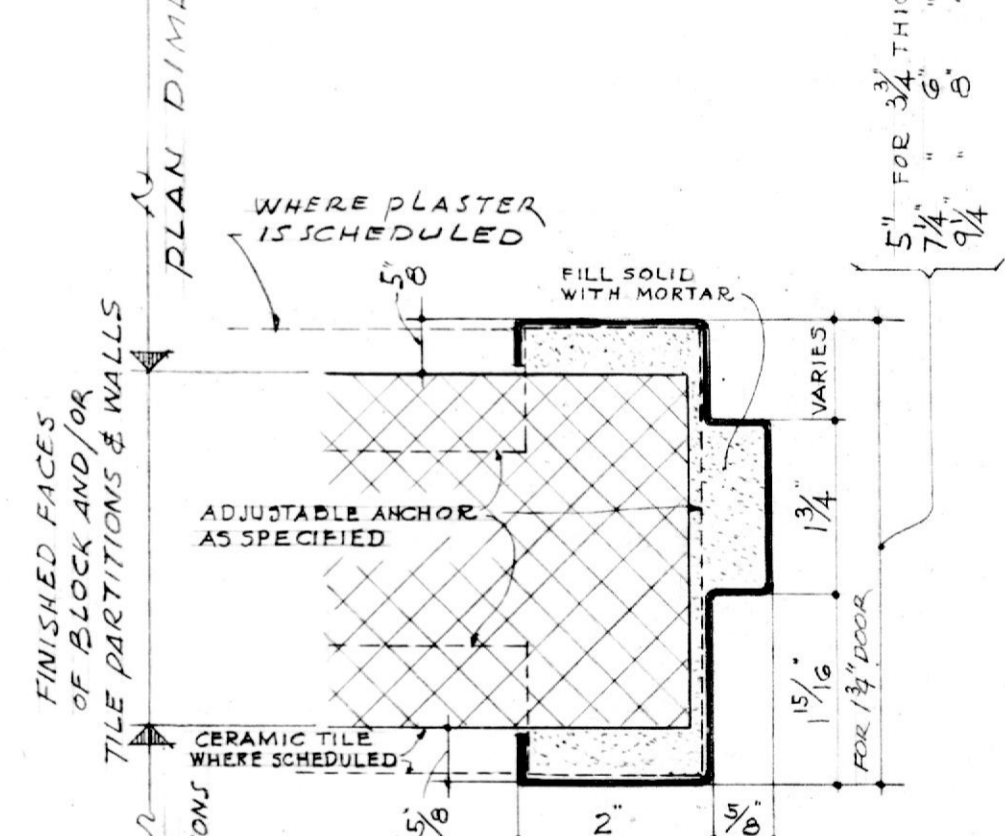
SECTION - 3/4\"/>



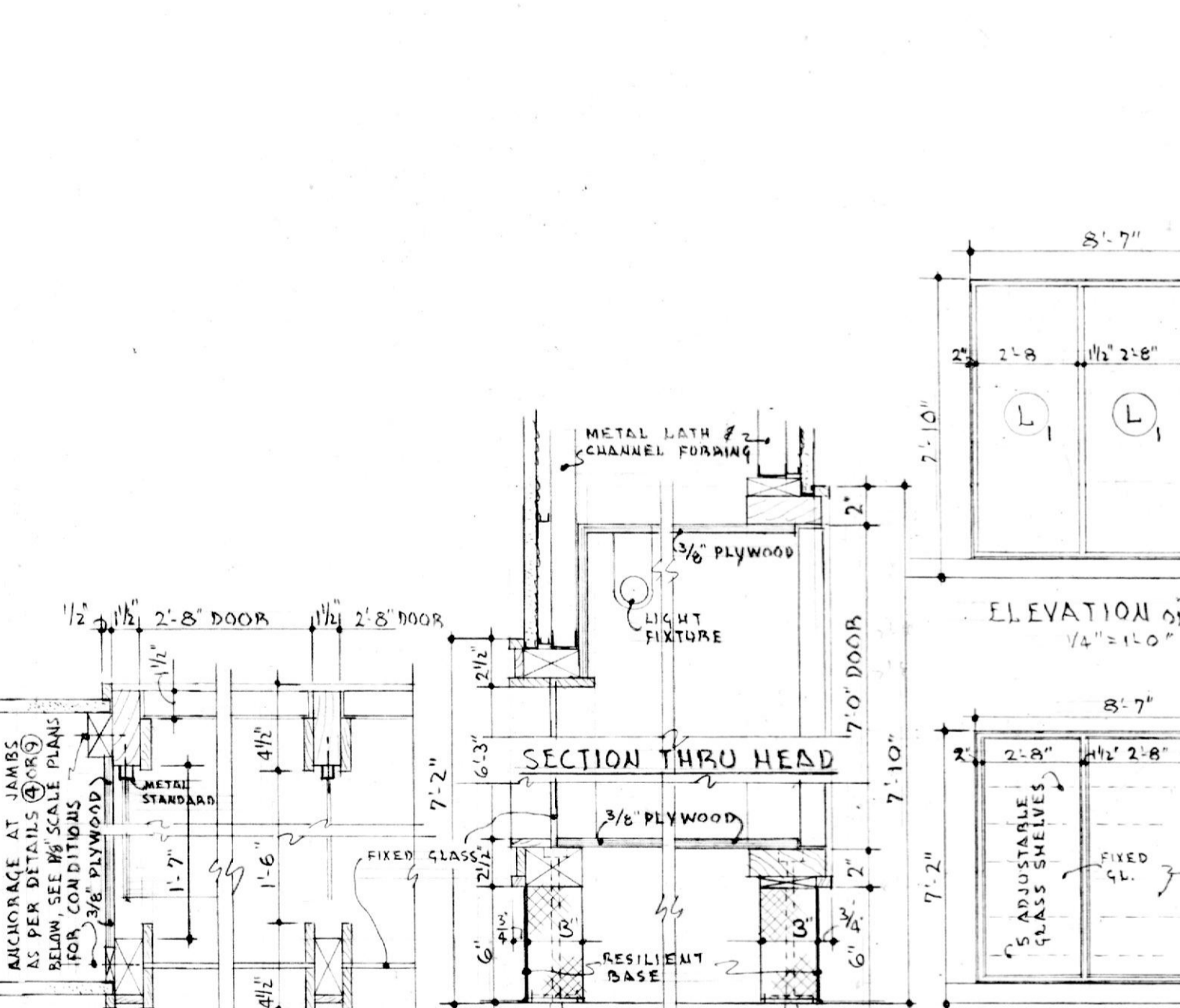
DETAIL EXTERIOR WOOD DOOR PANEL
SCALE: FULL SIZE



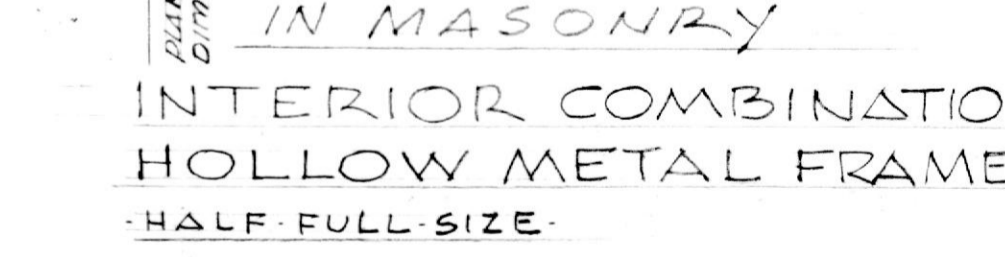
SECTION - 3/4\"/>



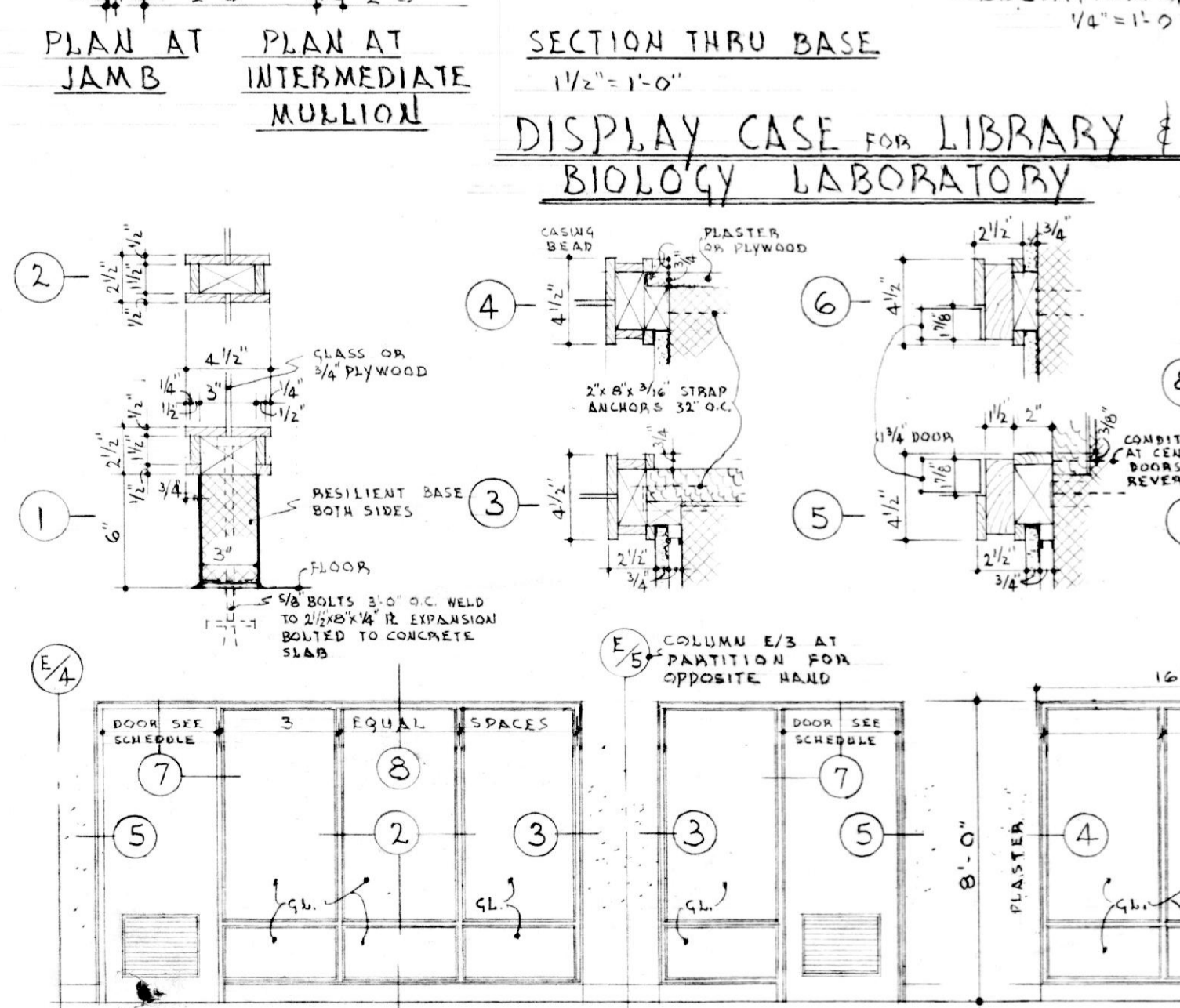
SECTION - 3/4\"/>



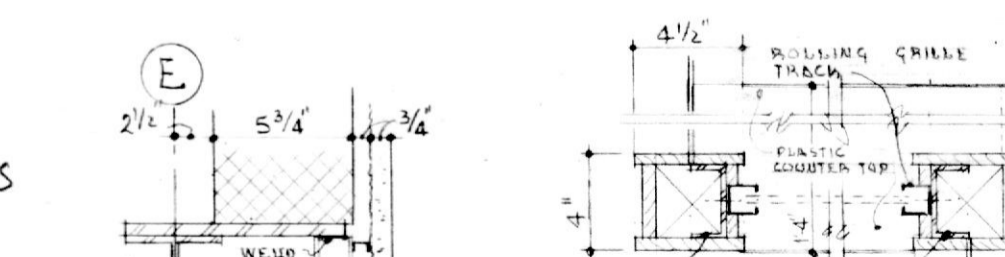
ELEVATION OF DOORS
1/4\"/>



ELEVATION OF FIXED GLASS
1/4\"/>



SECTION THRU HEAD
1/4\"/>



SECTION THRU BASE
1/4\"/>

BETWEEN SERVING & STUDENTS DINING RM
2 REQUIRED

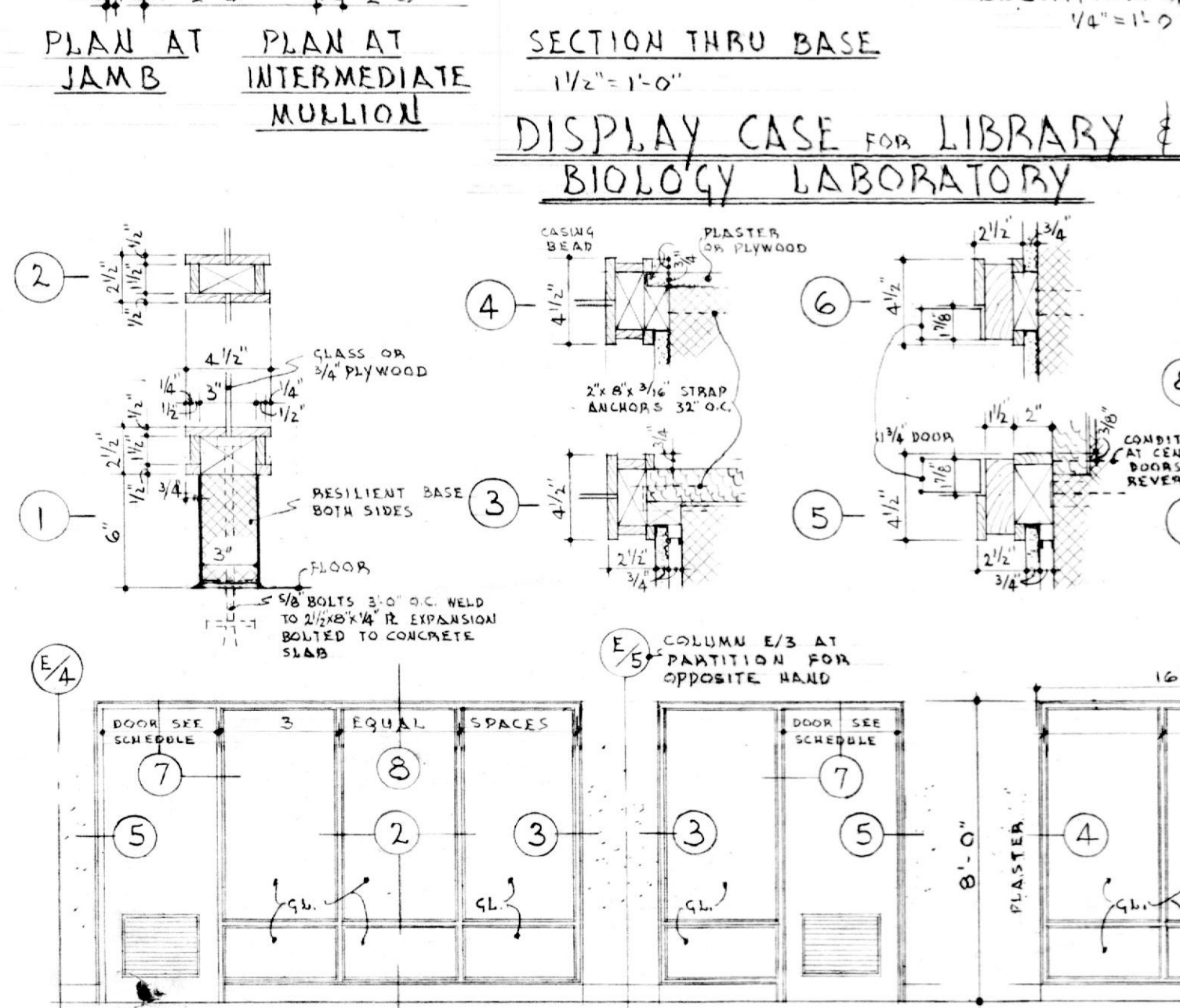
BETWEEN STUDENTS DINING RM & CORRIDOR
2 REQUIRED

BETWEEN WAITING RM. # CORRIDOR
1 REQUIRED

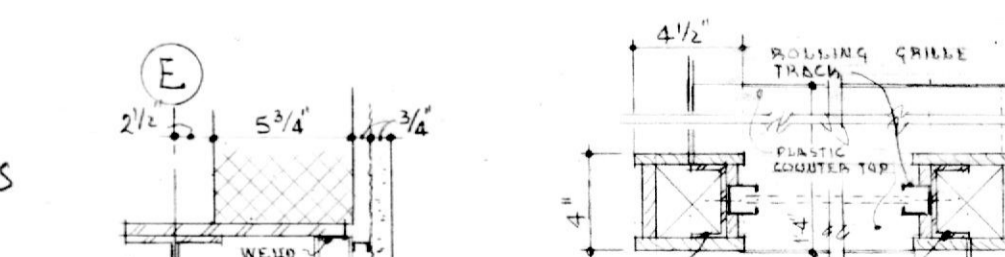
BETWEEN WAITING RM. # SECRETARY
1 REQUIRED

BETWEEN OFFICE # KITCHEN
1 REQUIRED

BETWEEN OFFICE # BOILER RM.
1 REQUIRED



PLAN AT INTERMEDIATE MULLION
1/4\"/>



SECTION THRU HEAD
1/4\"/>

BETWEEN SERVING & STUDENTS DINING RM
2 REQUIRED

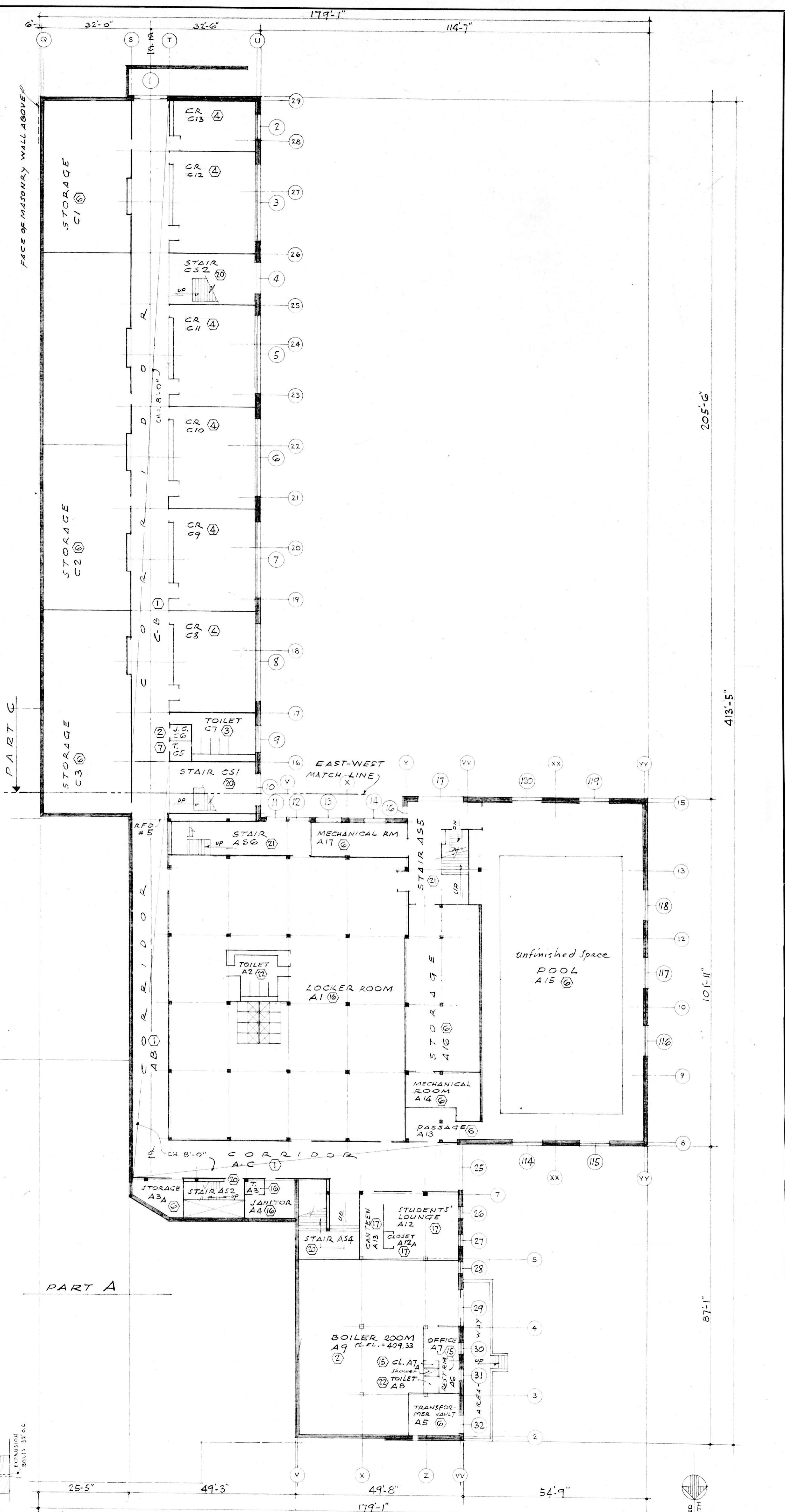
BETWEEN STUDENTS DINING RM & CORRIDOR
2 REQUIRED

BETWEEN WAITING RM. # CORRIDOR
1 REQUIRED

BETWEEN WAITING RM. # SECRETARY
1 REQUIRED

BETWEEN OFFICE # KITCHEN
1 REQUIRED

BETWEEN OFFICE # BOILER RM.
1 REQUIRED



LOWER FLOOR PLAN - SCALE 1/16\"/>

LOWER FLOOR PLAN COMPLETE BUILDING.

NOTRE DAME PREPARATORY SCHOOL
BALTIMORE COUNTY, MARYLAND
UPPER SCHOOL
FOR THE
SCHOOL SISTERS OF NOTRE DAME

TAYLOR AND FISHER, ARCHITECTS
D. K. ESTE FISHER, JR., F.A.I.A. - WARREN A. BOWERSOCK, A.I.A.
130 W. HAMILTON ST., BALTIMORE 1, MD.

VAN RENSSELAER P. SAXE - STRUCTURAL ENGINEER
HENRY ADAMS, INC. - MECHANICAL ENGINEERS
MARTIN FUNNELL - LANDSCAPE ARCHITECT

JOB NO. 1115
DATE: APRIL 1, 1959
DRAWING NUMBER
A-3
THIS PRINT ISSUED
APR 7 1959