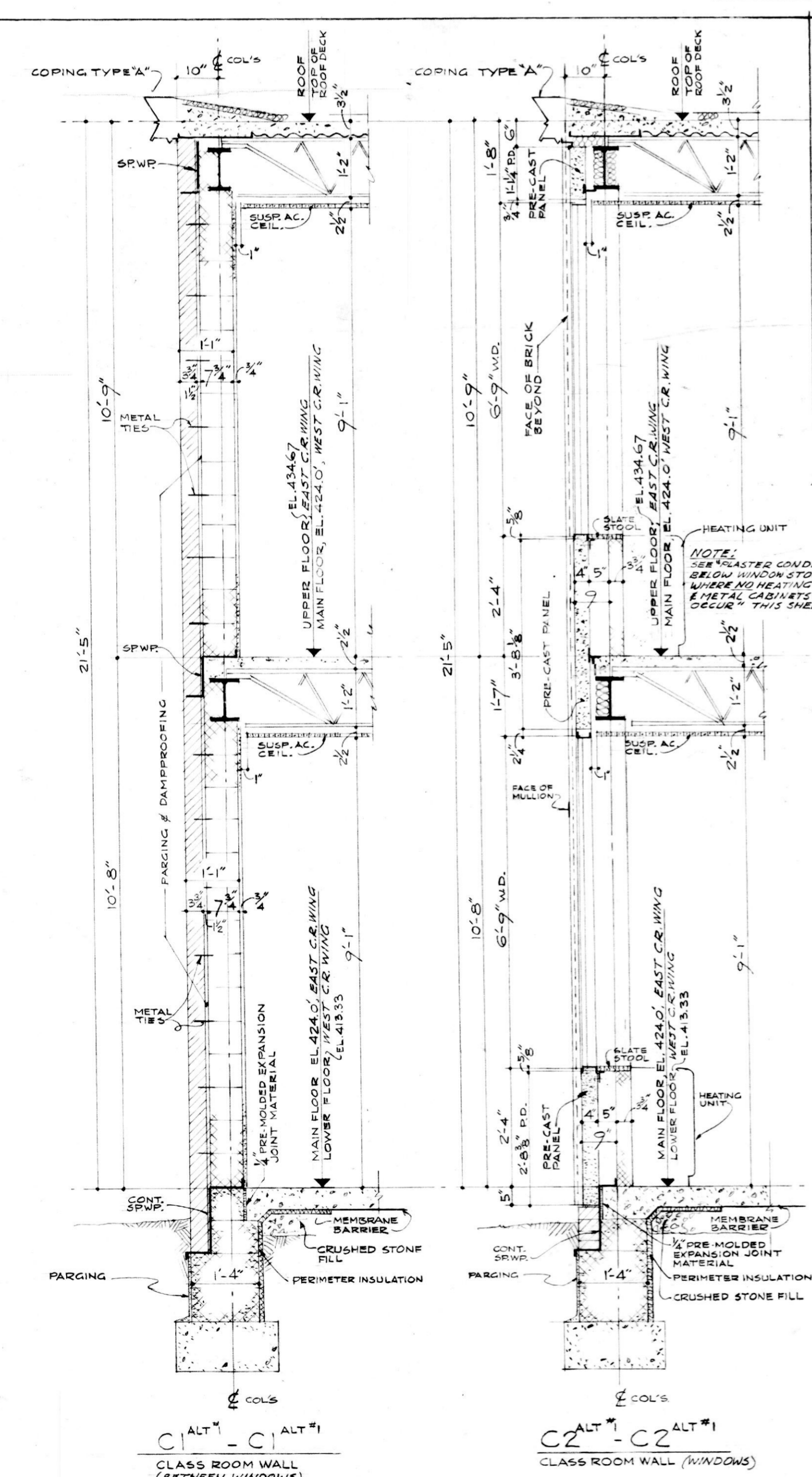
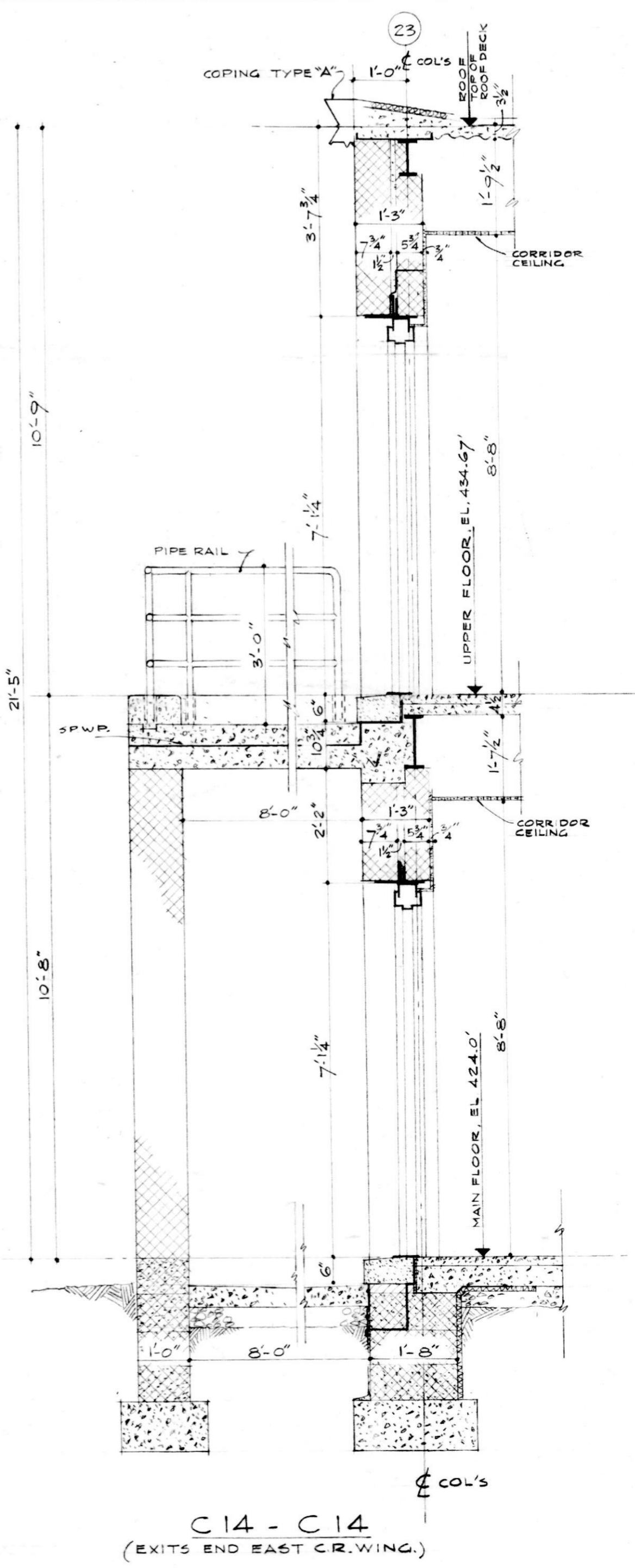


EXTERIOR WALL SECTIONS SCALE 1/2" = 1'-0"

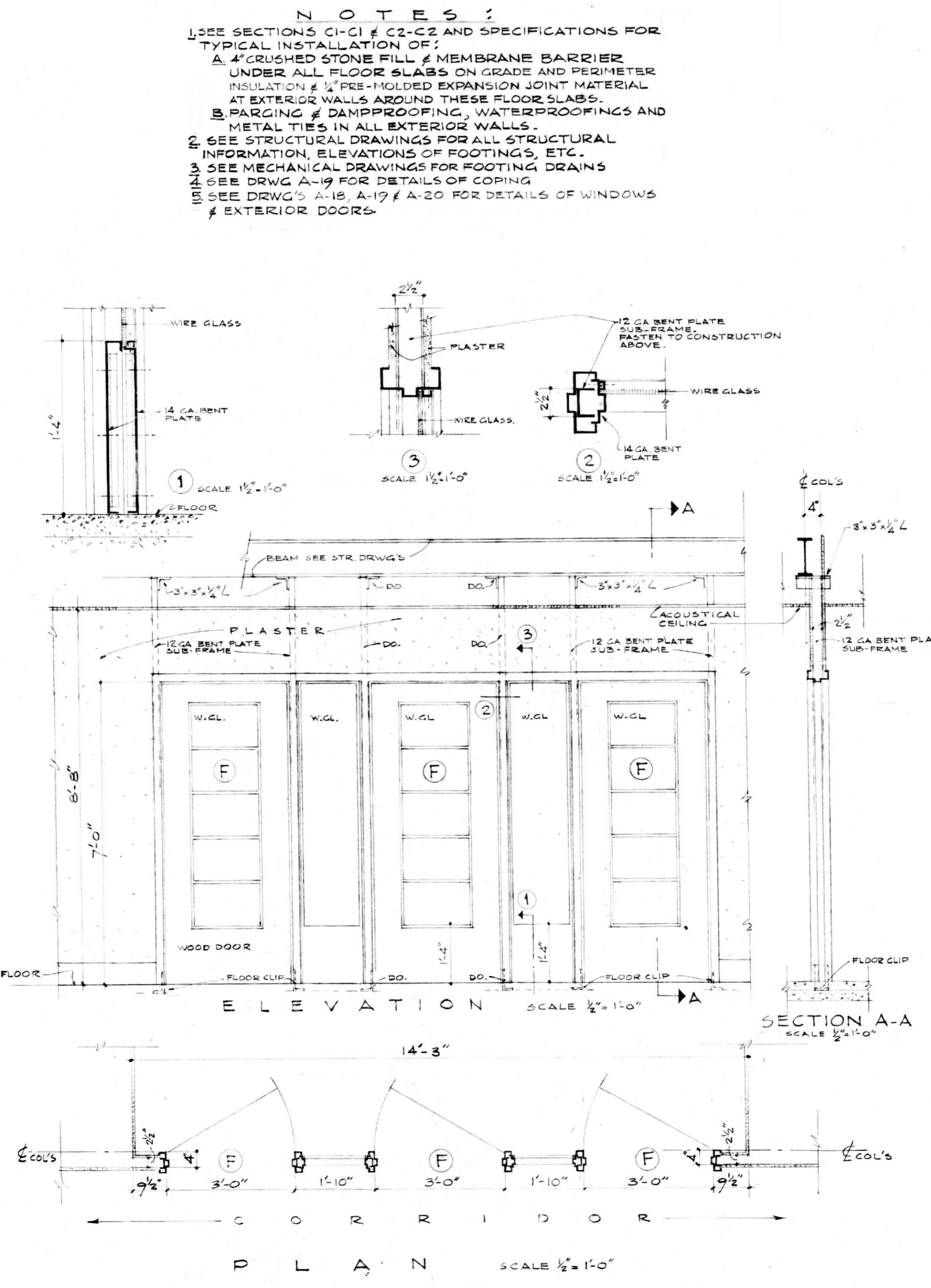
NOTES:
 1. SEE SECTIONS C1-C11 & C2-C12 AND SPECIFICATIONS FOR TYPICAL INSTALLATION OF:
 A. CRUSHED STONE FILL & MEMBRANE BARRIER UNDER ALL FLOOR SLABS ON GRADE AND PERIMETER INSULATION & PRE-MOLDED EXPANSION JOINT MATERIAL AT EXTERIOR WALLS AROUND THESE FLOOR SLABS.
 B. PARING & DAMPROOFING, WATERPROOFINGS AND METAL TIES IN ALL EXTERIOR WALLS.
 2. SEE STRUCTURAL DRAWINGS FOR ALL STRUCTURAL INFORMATION, ELEVATIONS OF FOOTINGS, ETC.
 3. SEE MECHANICAL DRAWINGS FOR FOOTING DRAINS.
 4. SEE DRWG. A-19 FOR DETAILS OF COPING.
 5. SEE DRWG. A-18, A-17 & A-20 FOR DETAILS OF WINDOWS & EXTERIOR DOORS.



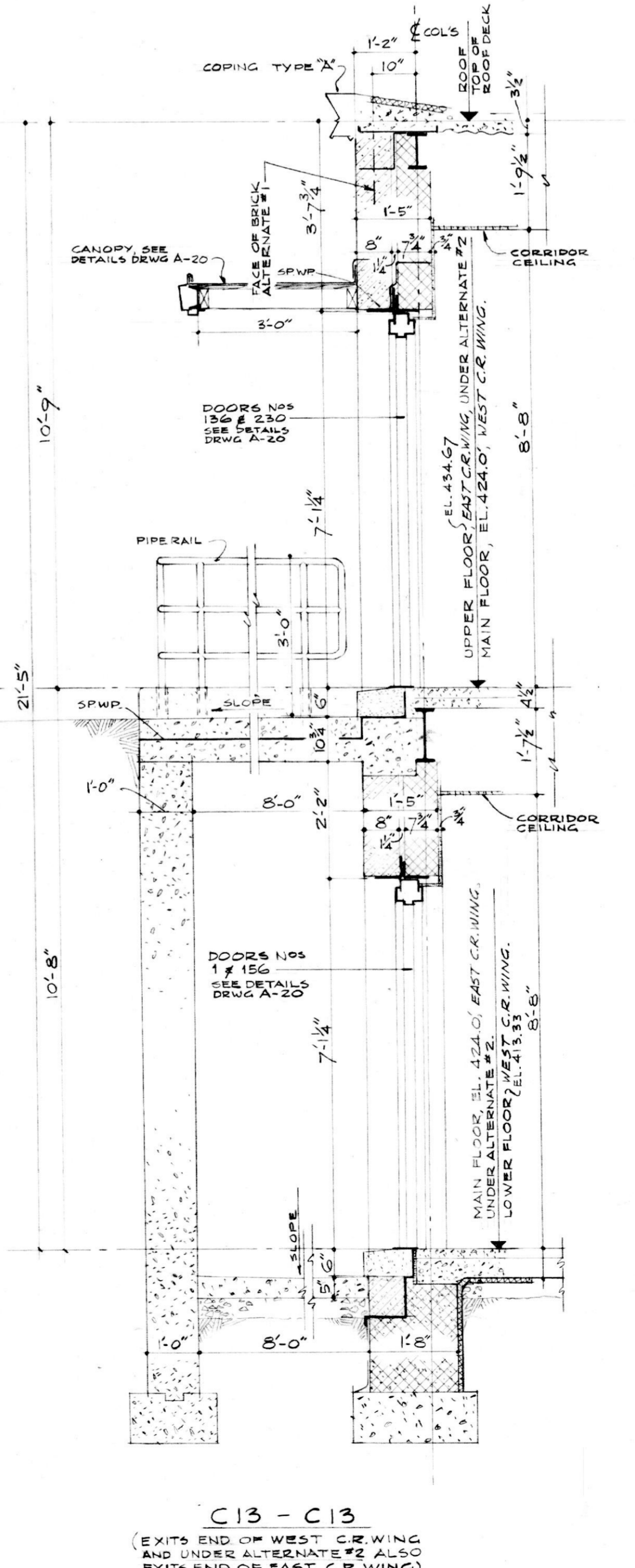
TYPICAL EXTERIOR WALL SECTIONS FOR ALTERNATE #1 SCALE 1/2" = 1'-0"



C14-C14 (EXITS END EAST CR. WING.)



DETAILS OF SMOKE SCREEN

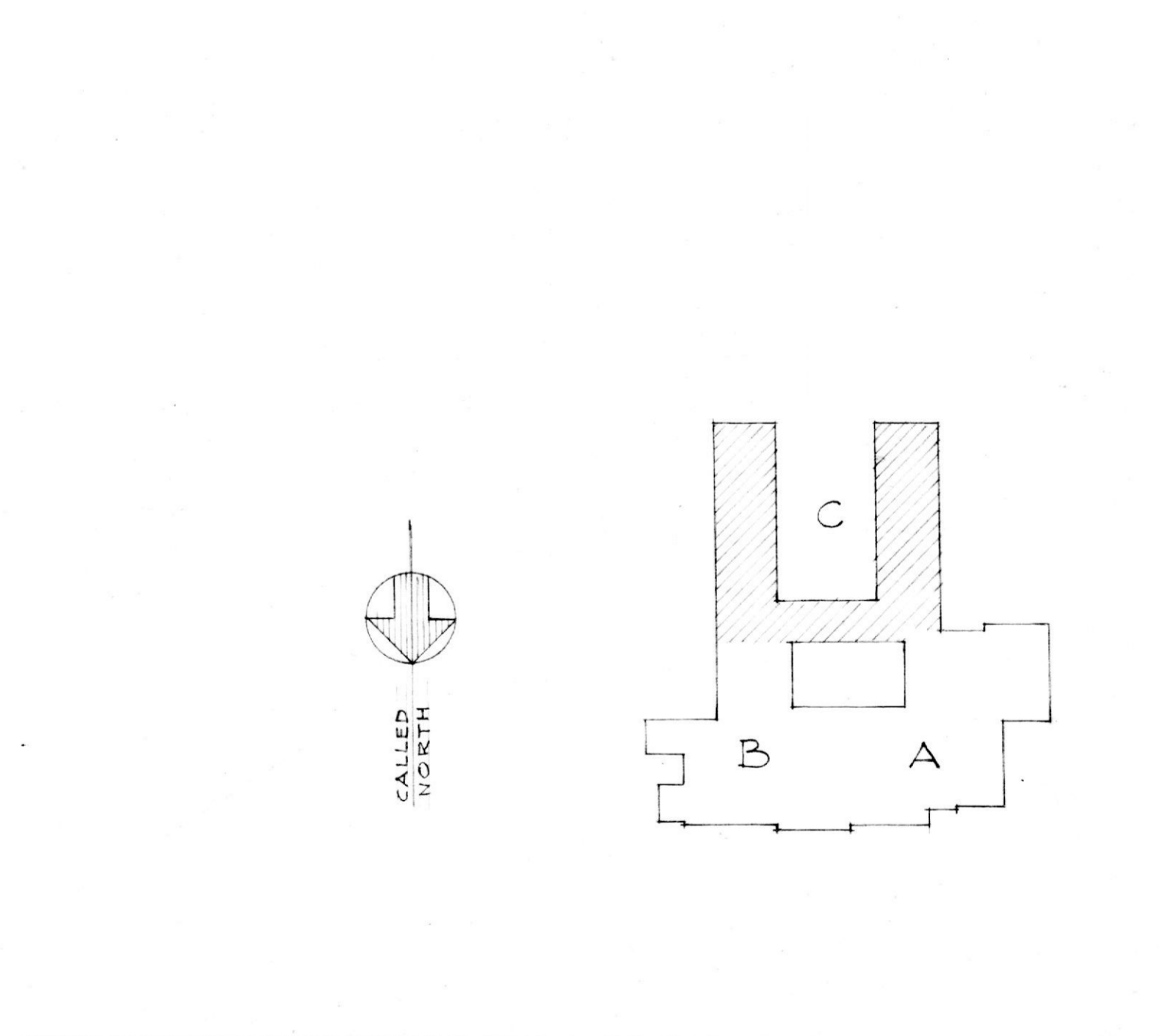


C13-C13 (EXITS END OF WEST CR. WING AND UNDER ALTERNATE #2 ALSO EXITS END OF EAST CR. WING)

SCHEDULE OF SKYDOMES

INSIDE CURB DIMENSIONS	N. U. M. B. S. E. C. (SEE CURB PLAN, SEE DRAWING A-2)
87' x 75'	#1 THRU #20 INCLUSIVE
67' CIRCULAR	#21
30 1/2' x 30'	#22 THRU #25 INCLUSIVE
46 1/2' x 46 1/2'	#27 #28 #29 #30 #31 #32 #33 #34 UNDER ALT. #2
	#26

DETAIL AND SCHEDULE OF SKYLIGHTS FOR COMPLETE BUILDING.



EXTERIOR WALL SECTIONS AND DETAILS. PART C

NOTRE DAME PREPARATORY SCHOOL
 BALTIMORE COUNTY, MARYLAND
 UPPER SCHOOL
 FOR THE
 SCHOOL SISTERS OF NOTRE DAME

TAYLOR AND FISHER, ARCHITECTS D. K. ESTE FISHER, JR., F.A.I.A. - WARREN A. BOWERSOCK, A.I.A. 130 W. HAMILTON ST., BALTIMORE 1, MD.	JOB NO. 1115 DATE: APRIL 1, 1959
VAN RENSSELAER P. SAXE - STRUCTURAL ENGINEER	DRAWING NUMBER A-15
HENRY ADAMS, INC. - MECHANICAL ENGINEERS	OF THIS PRINT ISSUED APR 7, 1959
MARTIN FUNNELL - LANDSCAPE ARCHITECT	