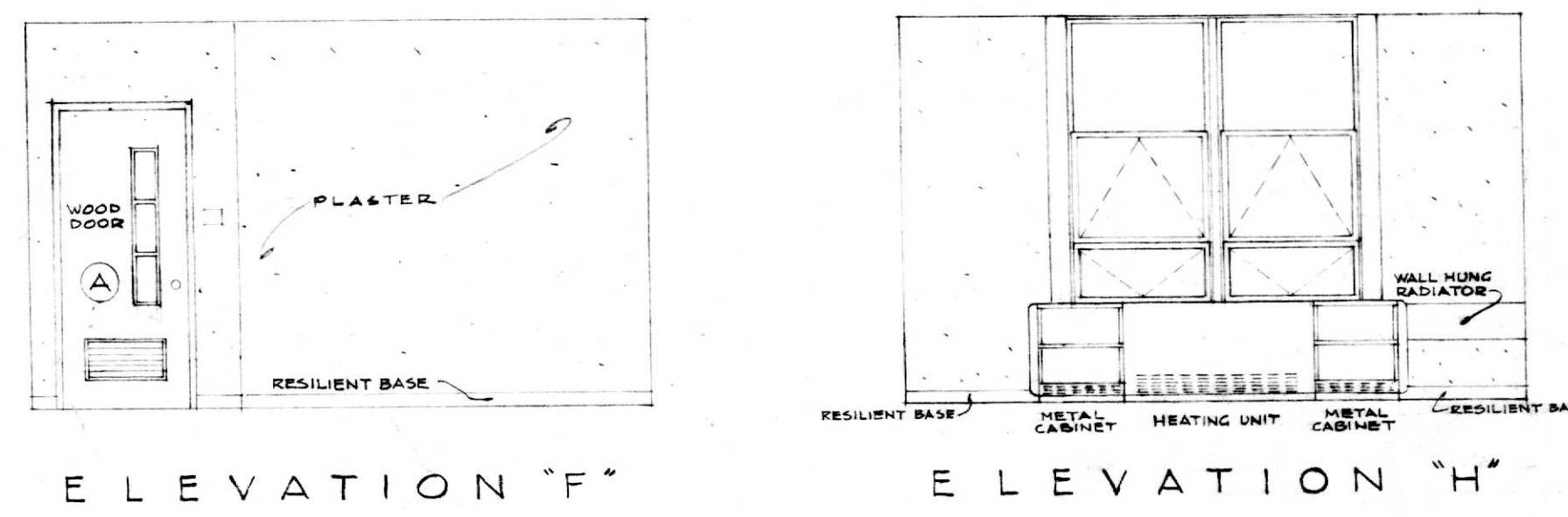
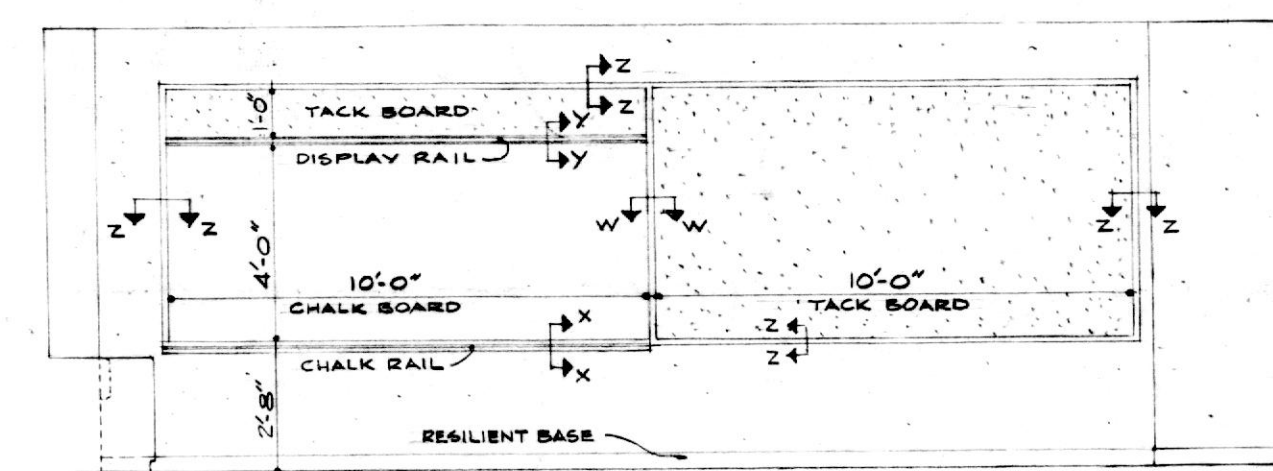
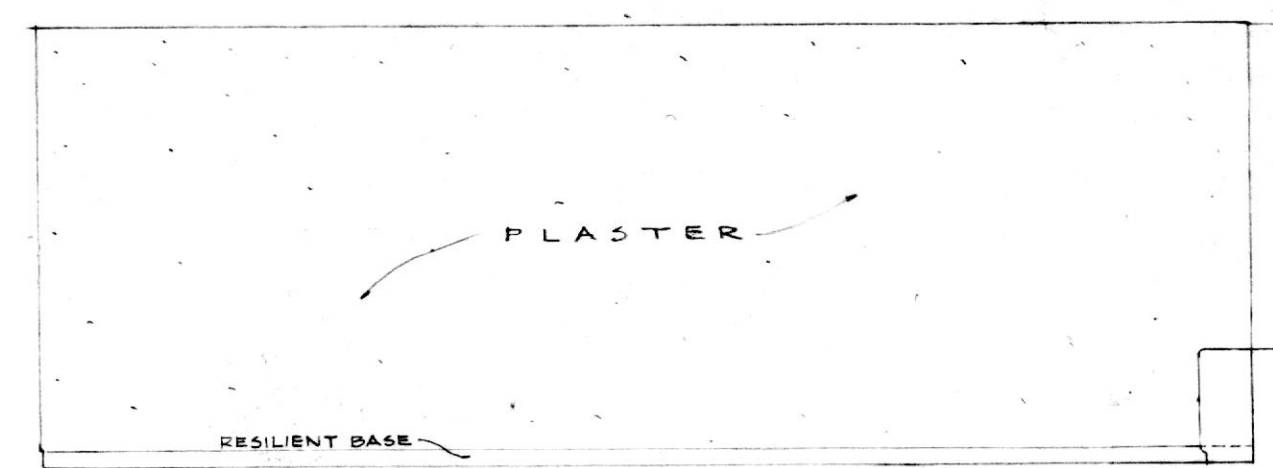
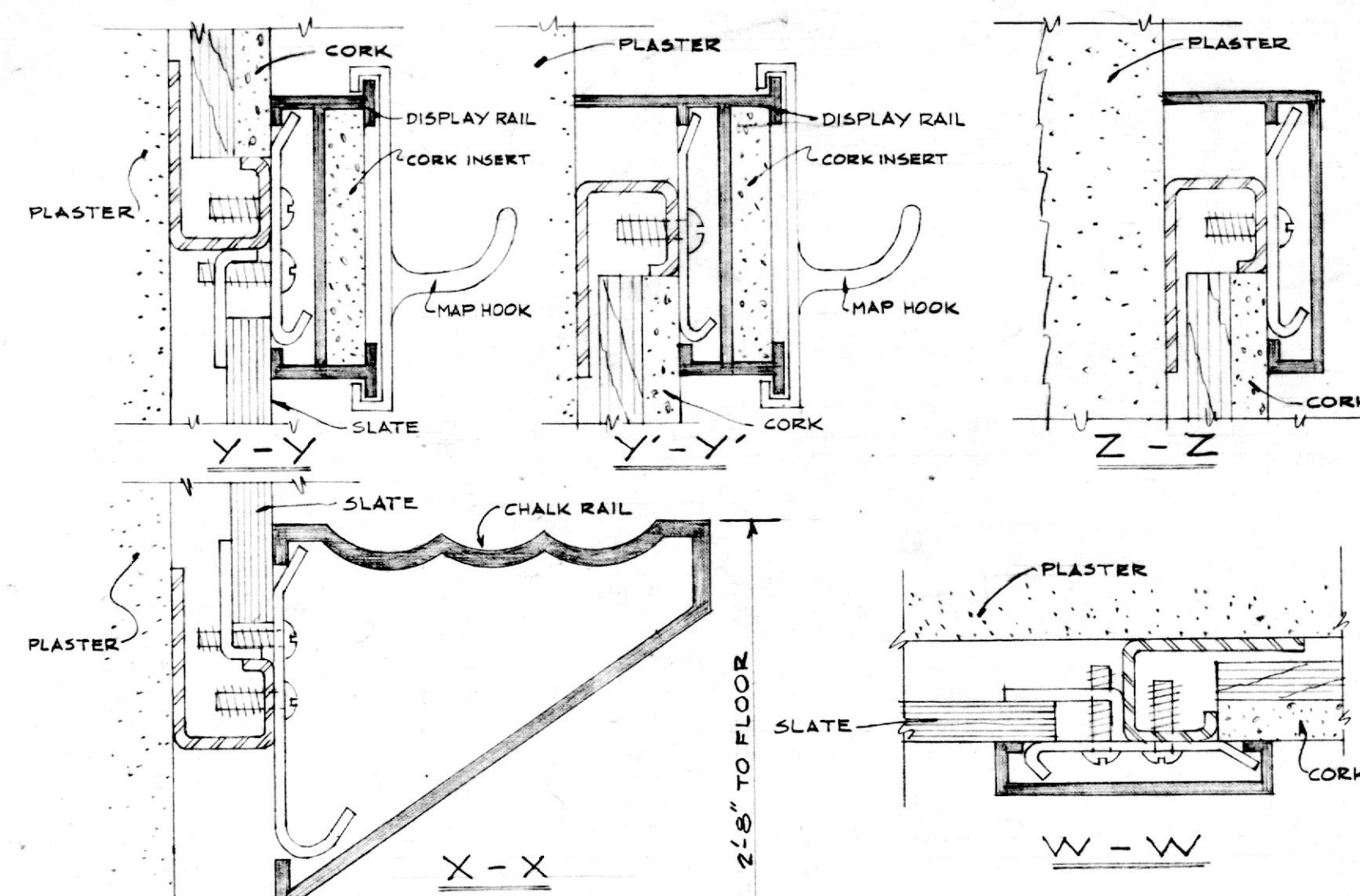
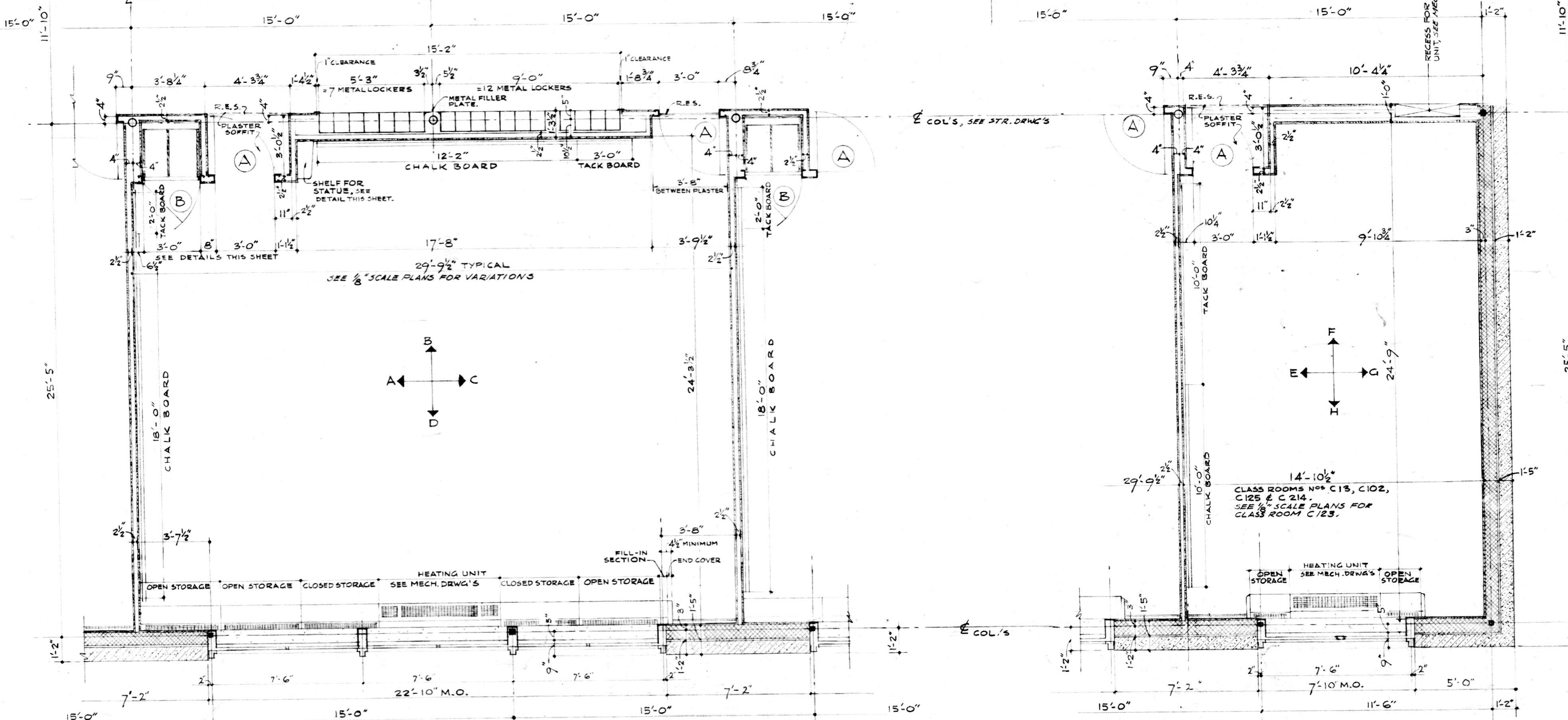
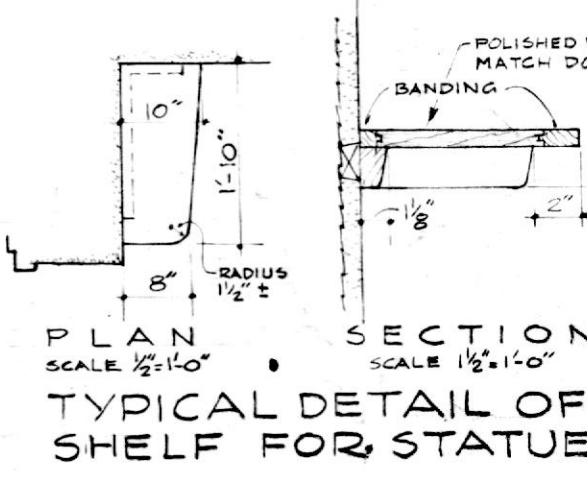
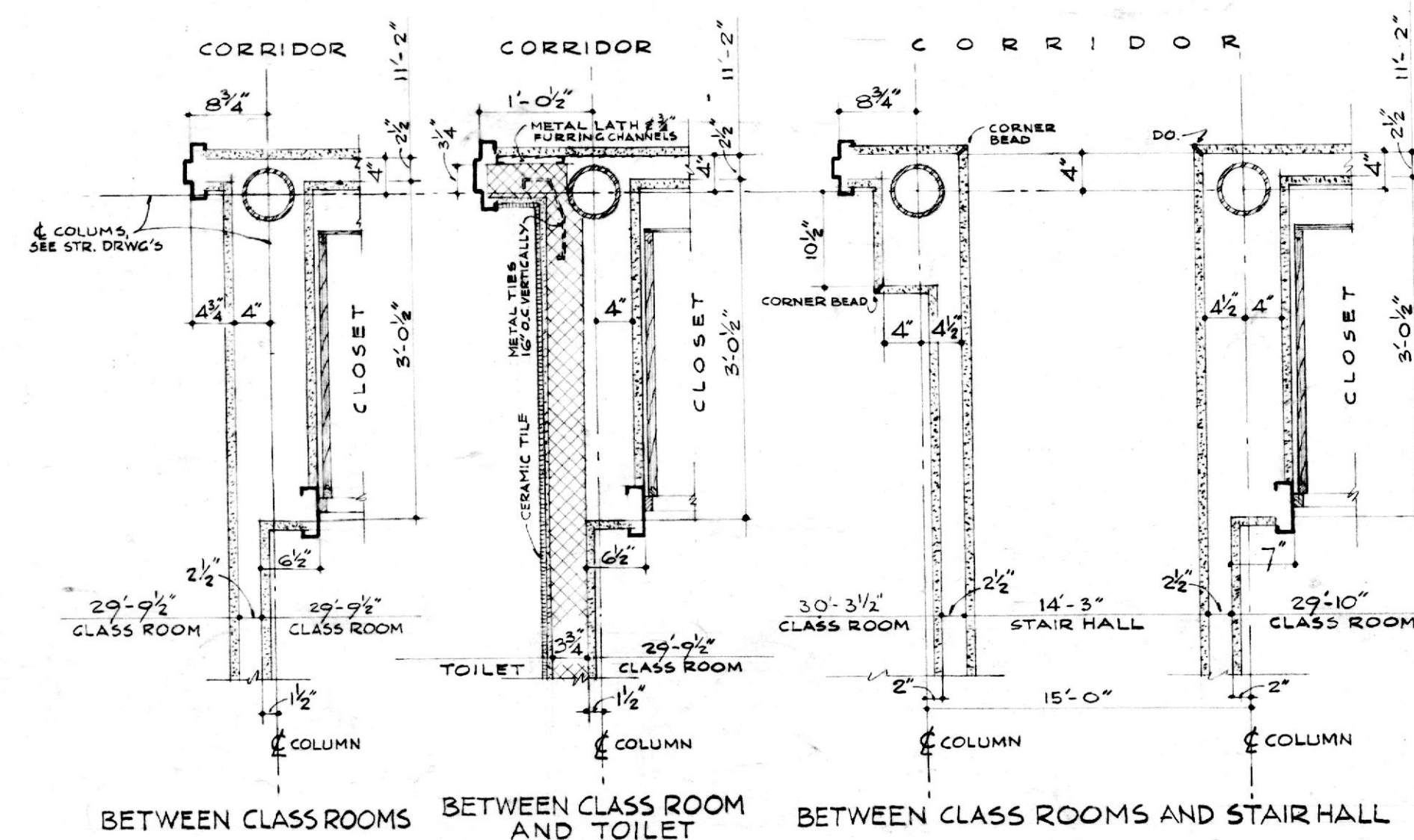
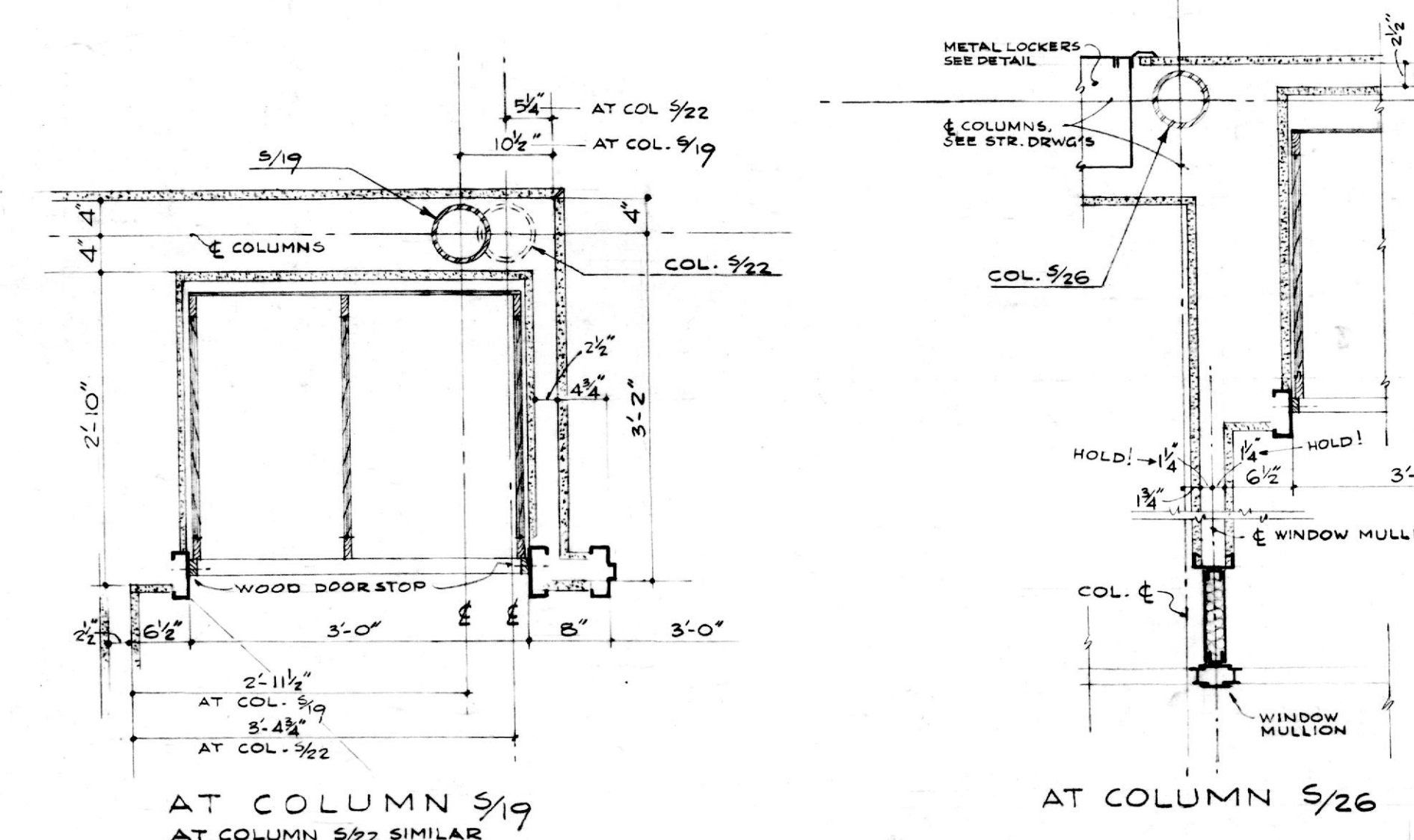
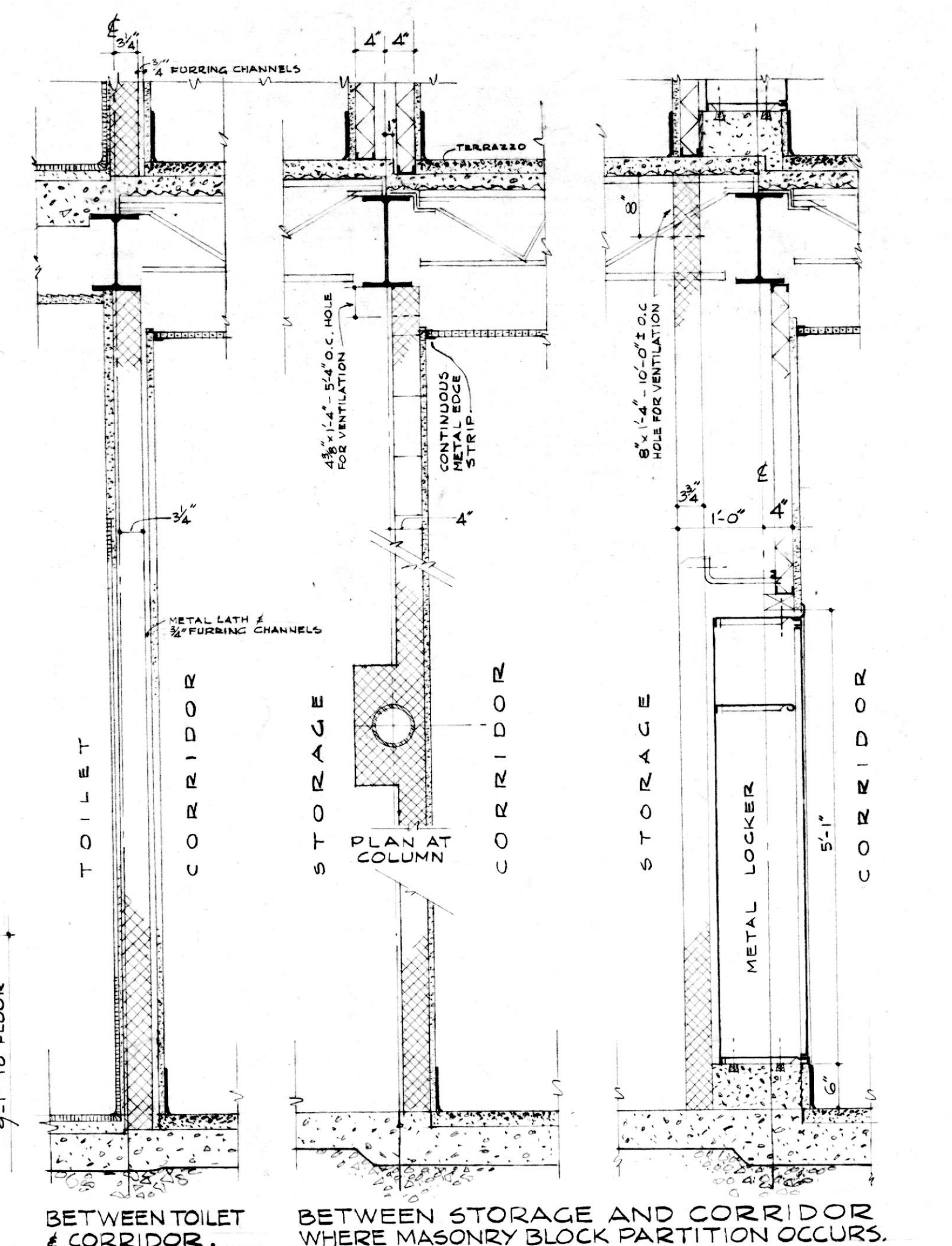
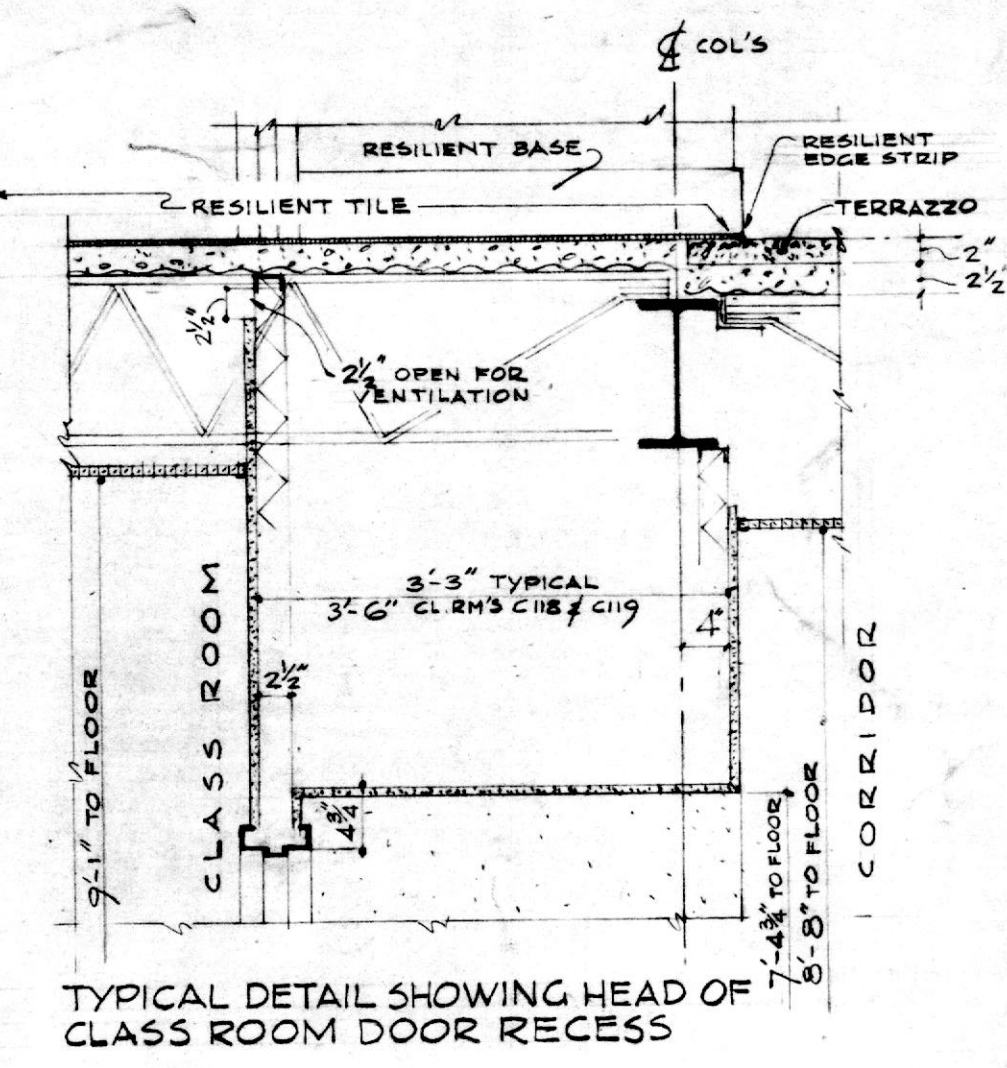
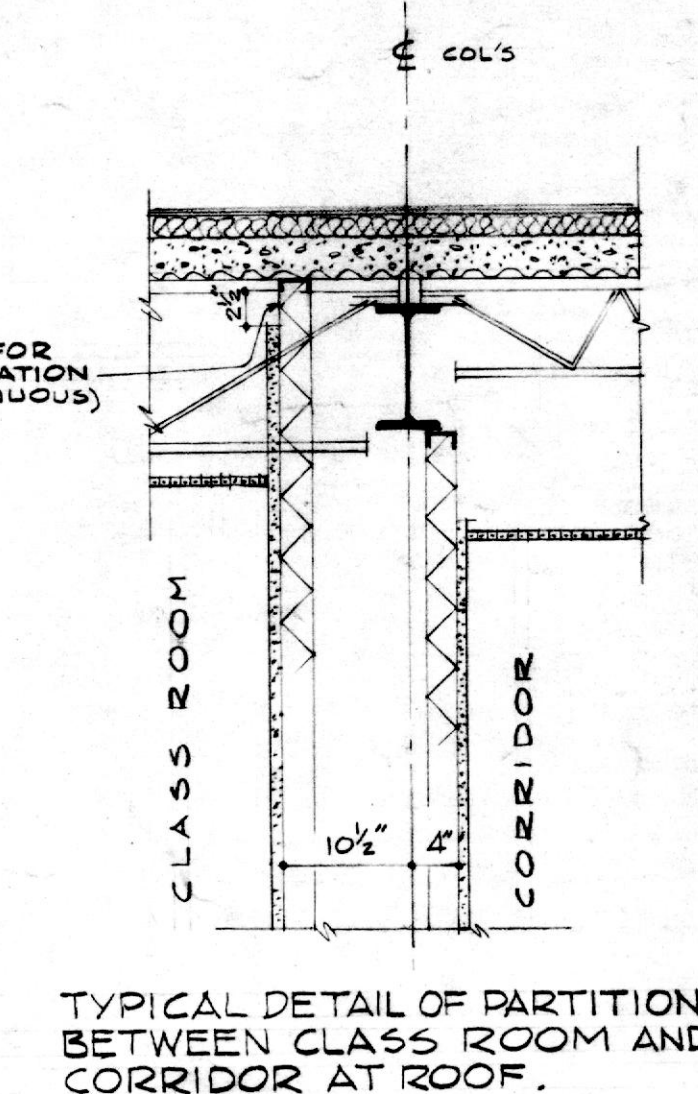
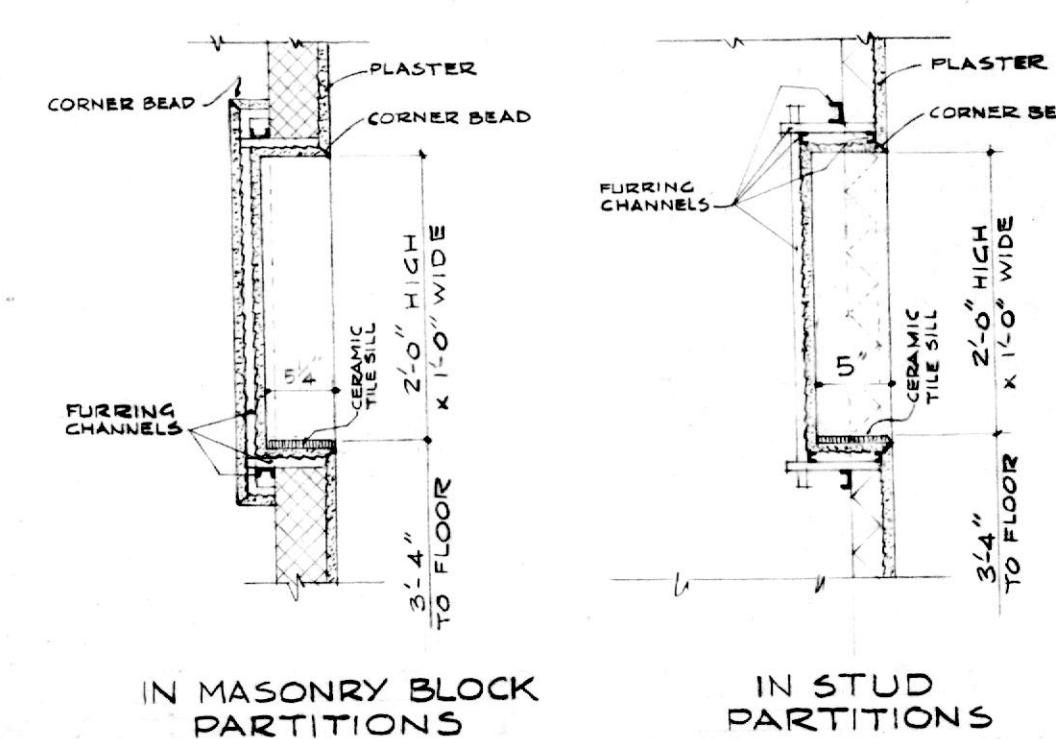
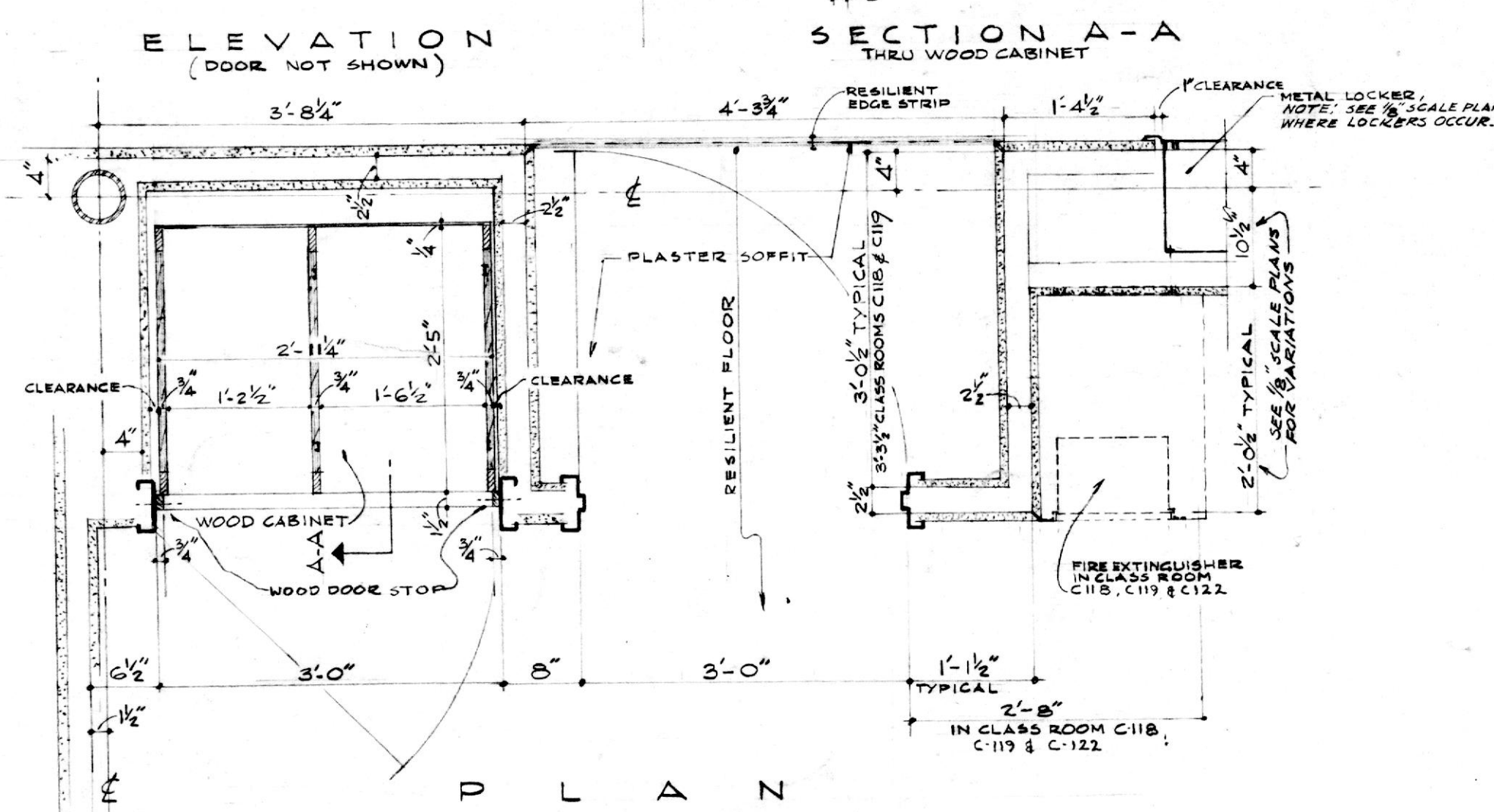
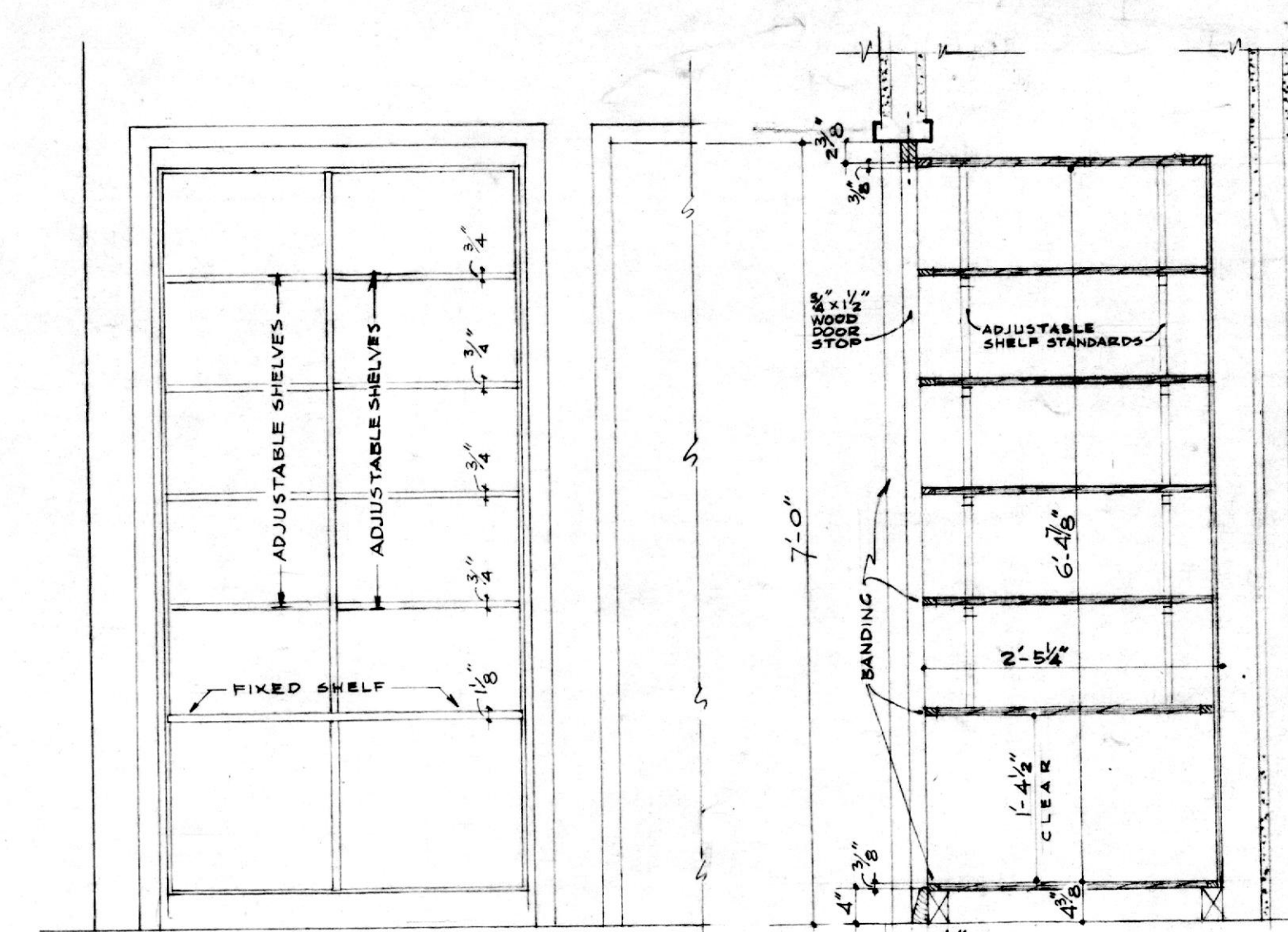


ELEVATIONS OF TYPICAL CLASS ROOM WALLS
SCALE 1/4" = 1'-0"



ELEVATIONS OF SPECIAL CLASS ROOM WALLS
SCALE 1/4" = 1'-0"



SECTIONS THRU PARTITIONS
SCALE 3/4" = 1'-0"

NOTES:
USE 1/2" SCALE FOR VARIATIONS, LOCATIONS OF LOCKERS, ETC.
SEE DWG A-14 FOR DETAILS OF SEATING UNIT RECESS, DWG A-3 FOR DETAILS OF DISPLAY CASE, AND THIS SHEET FOR DETAILS OF TELEPHONE NITCH.

CLASS ROOM LAYOUTS & DETAILS PART C
NOTRE DAME PREPARATORY SCHOOL
BALTIMORE COUNTY, MARYLAND
UPPER SCHOOL
FOR THE
SCHOOL SISTERS OF NOTRE DAME

TAYLOR and FISHER, ARCHITECTS
D. K. ESTE FISHER, JR., F.A.I.A. - WARREN A. BOWERSOCK, A.I.A.
130 W. HAMILTON ST., BALTIMORE 1, MD.
VAN RENSSLAER P. SAXE - STRUCTURAL ENGINEER
HENRY ADAMS, INC. - MECHANICAL ENGINEERS
MARTIN FUNNELL - LANDSCAPE ARCHITECT

JOB NO. 1115
DATE: APRIL 1, 1959
DRAWING NUMBER
A-16
THIS PRINT ISSUED
APR 7 1959