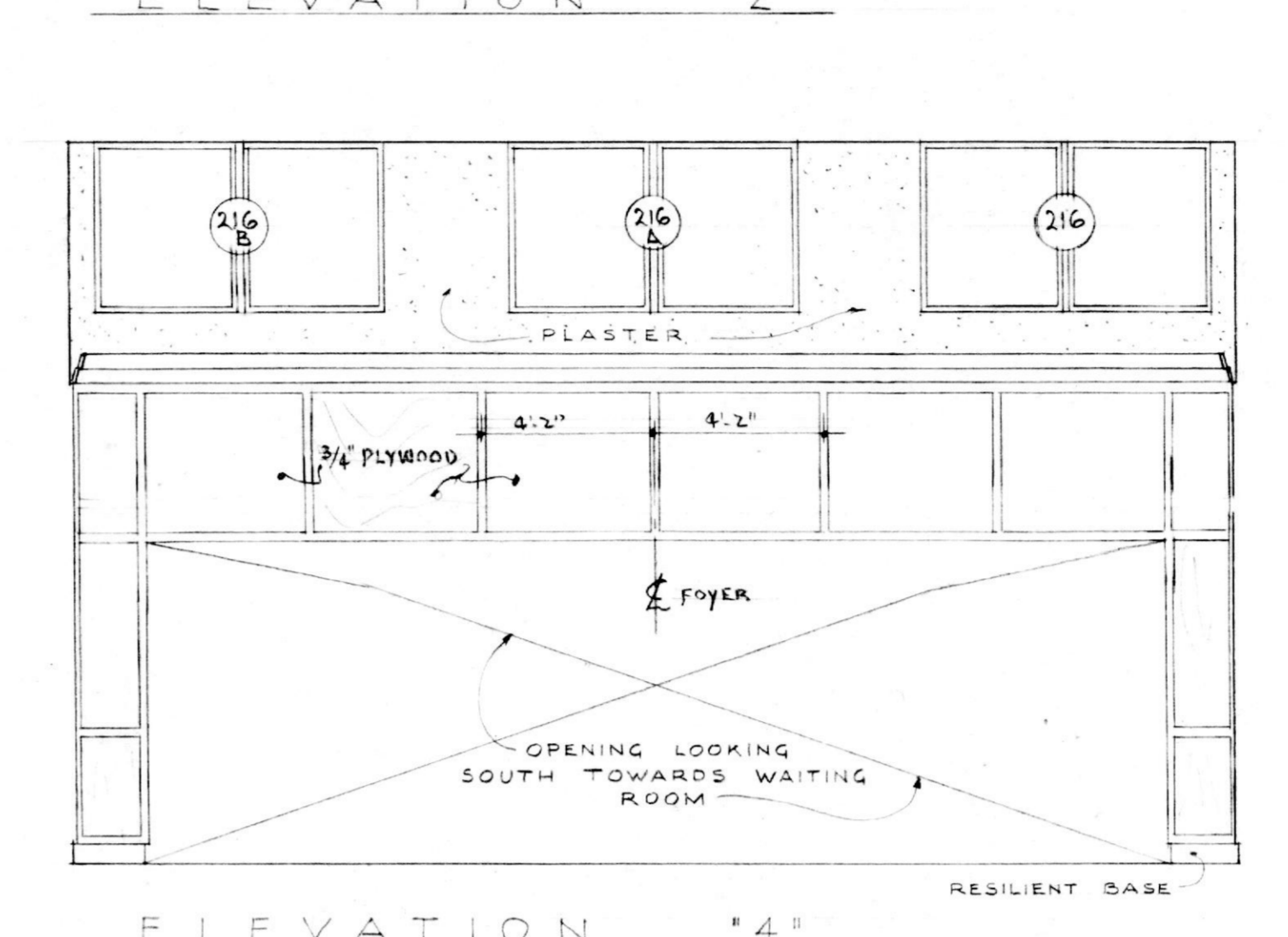
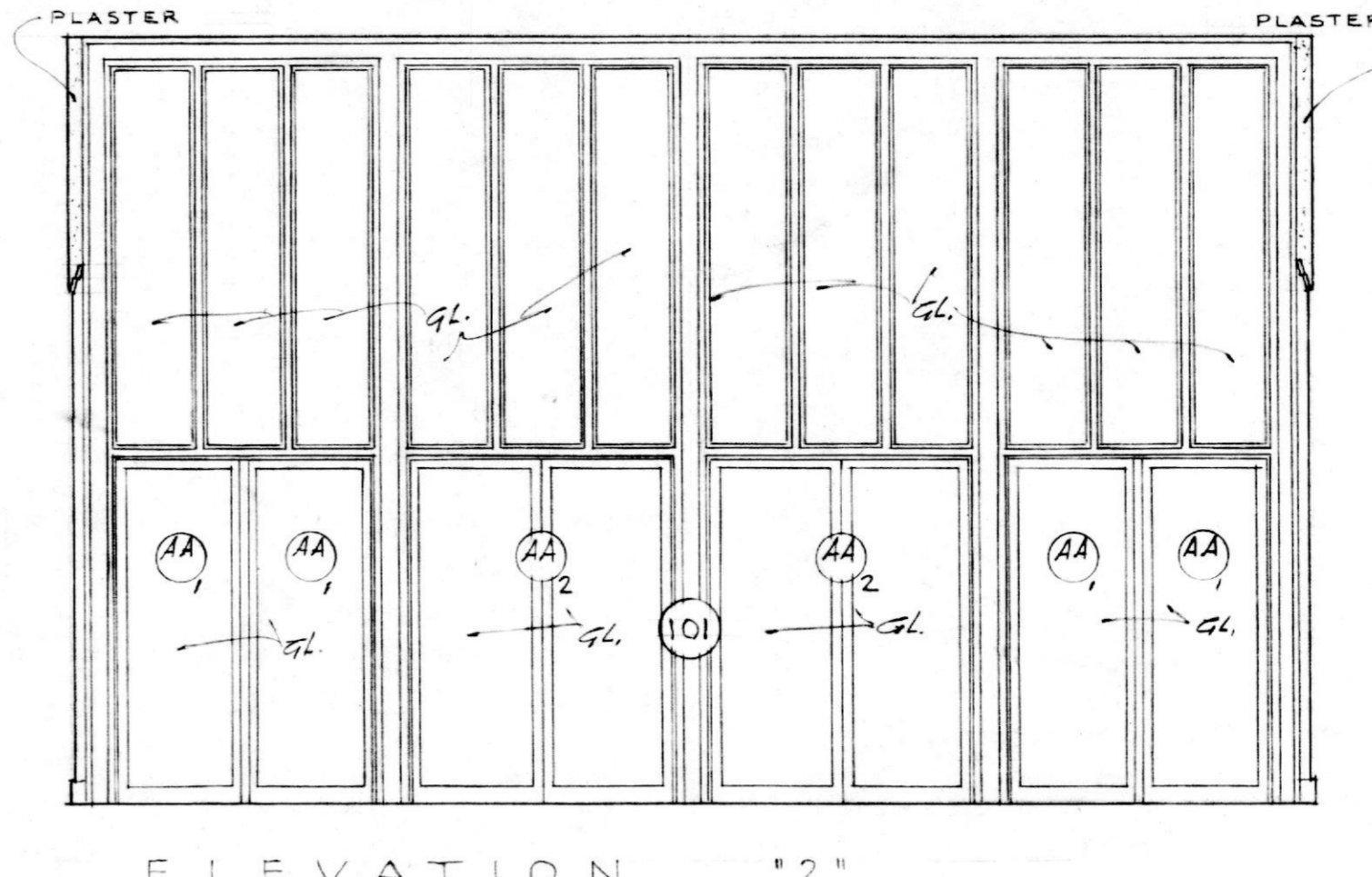
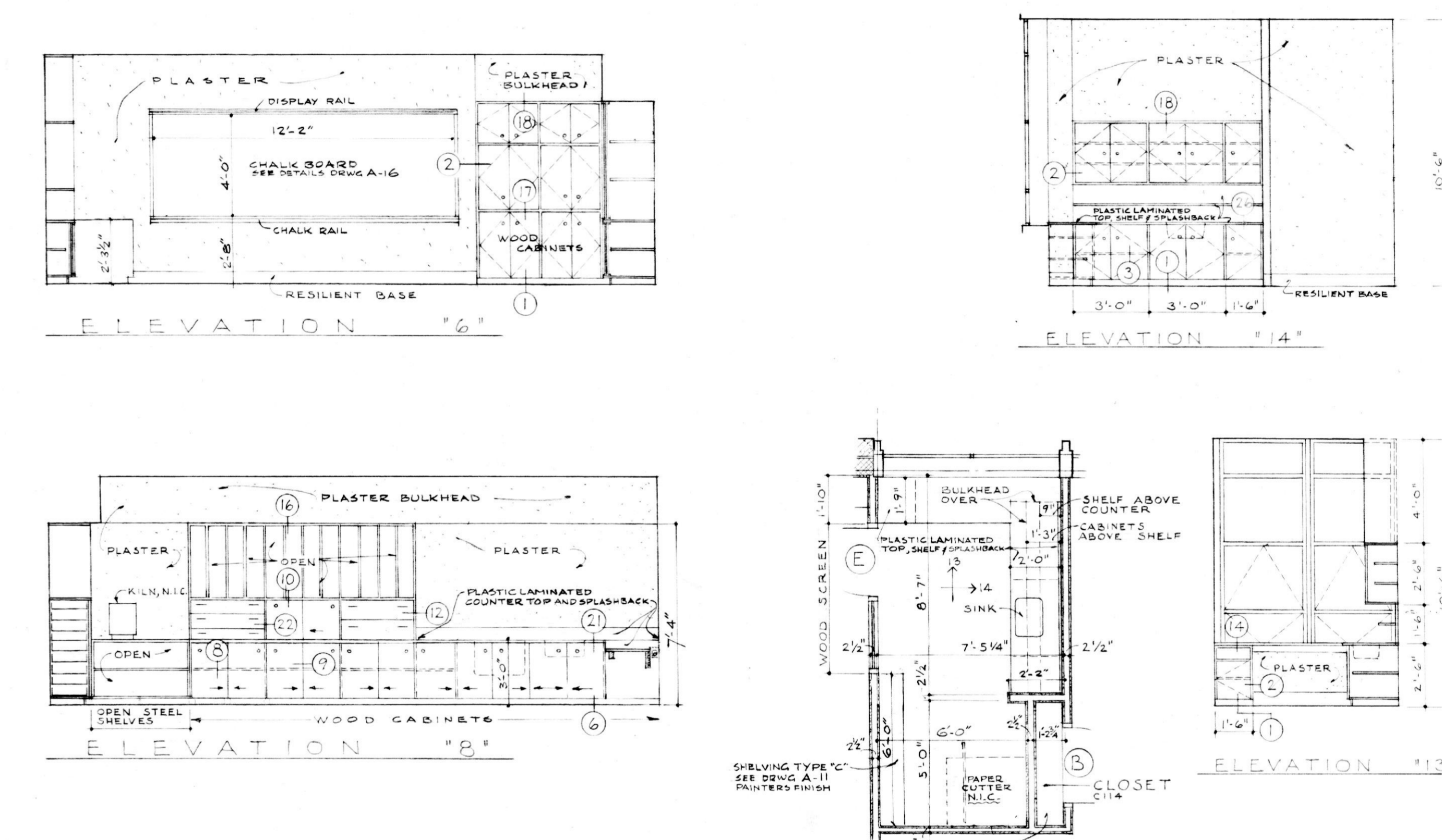
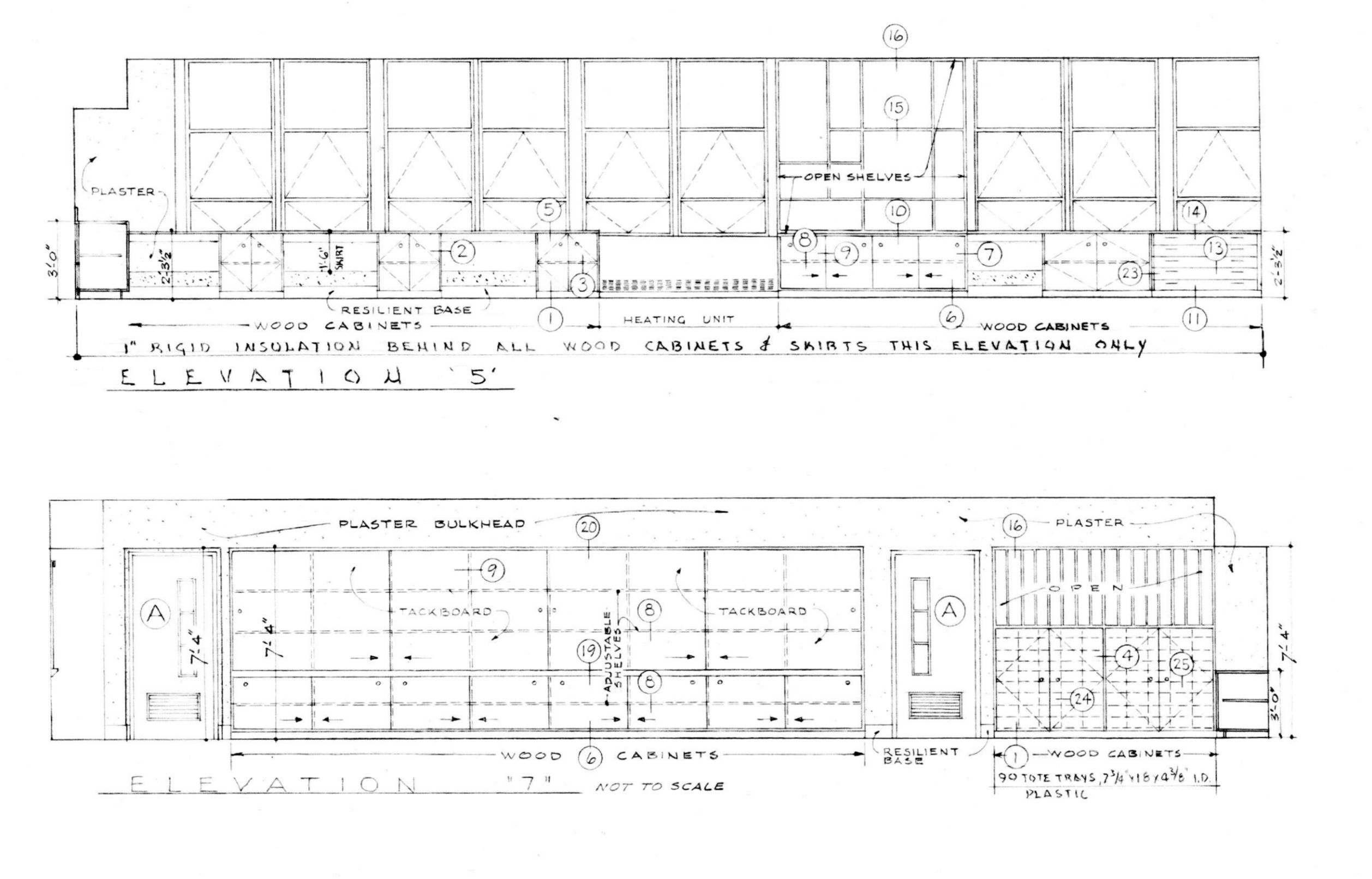
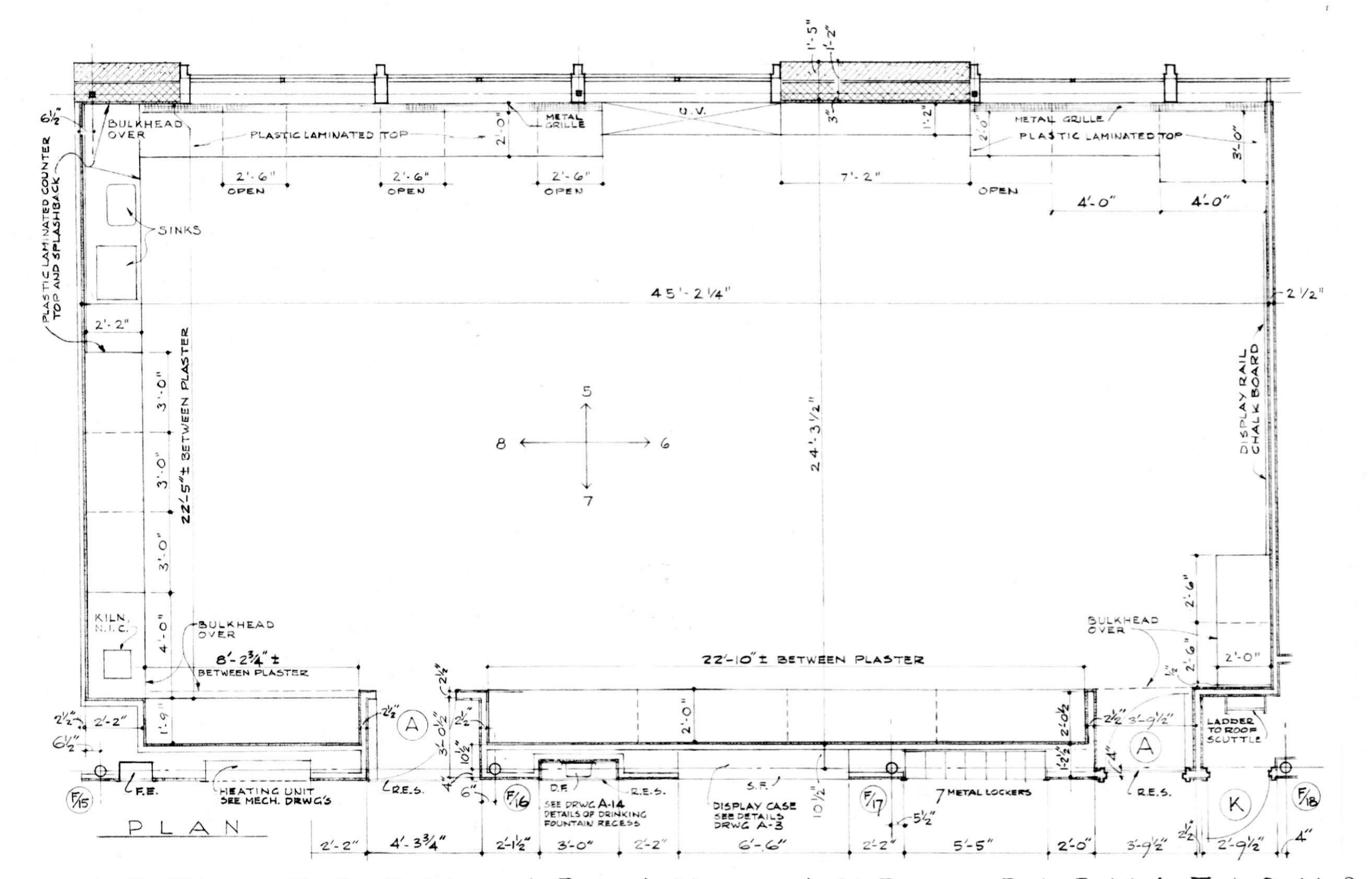
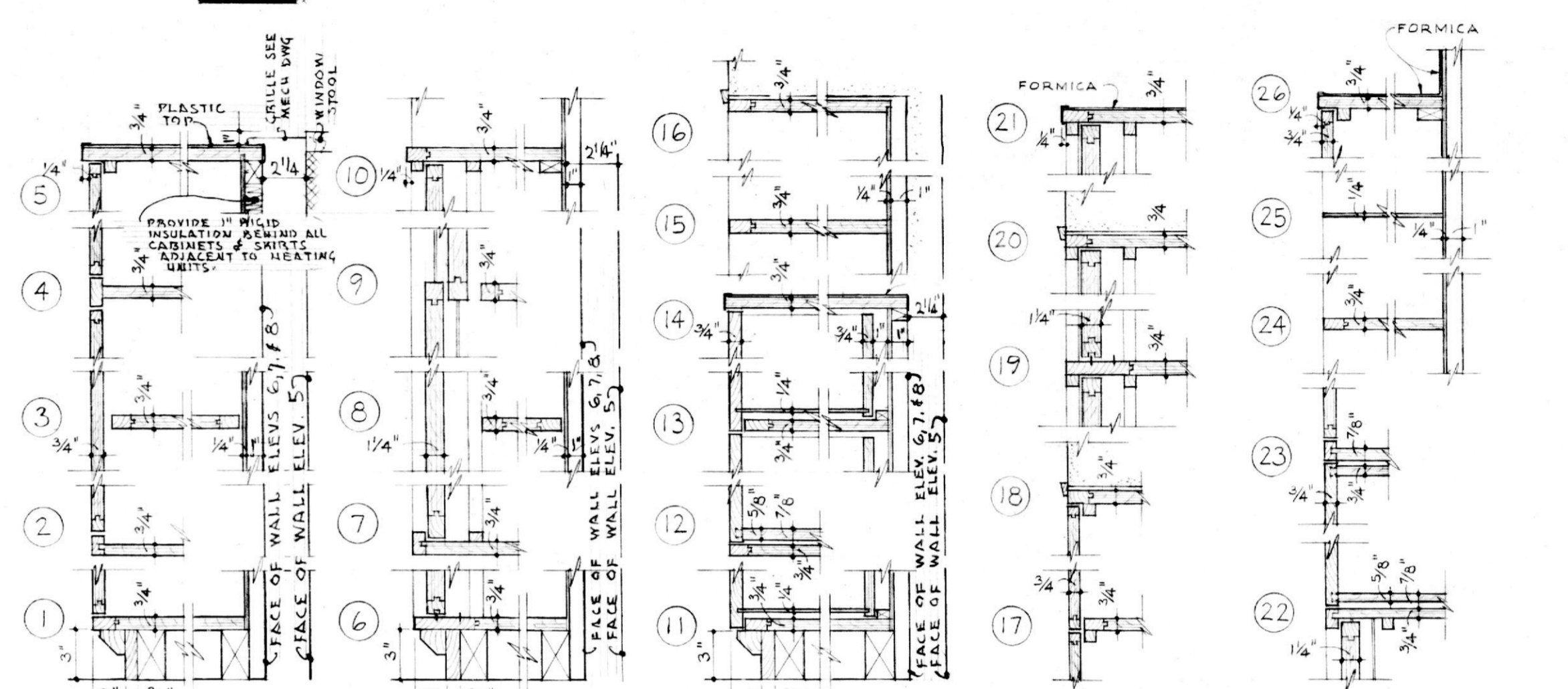
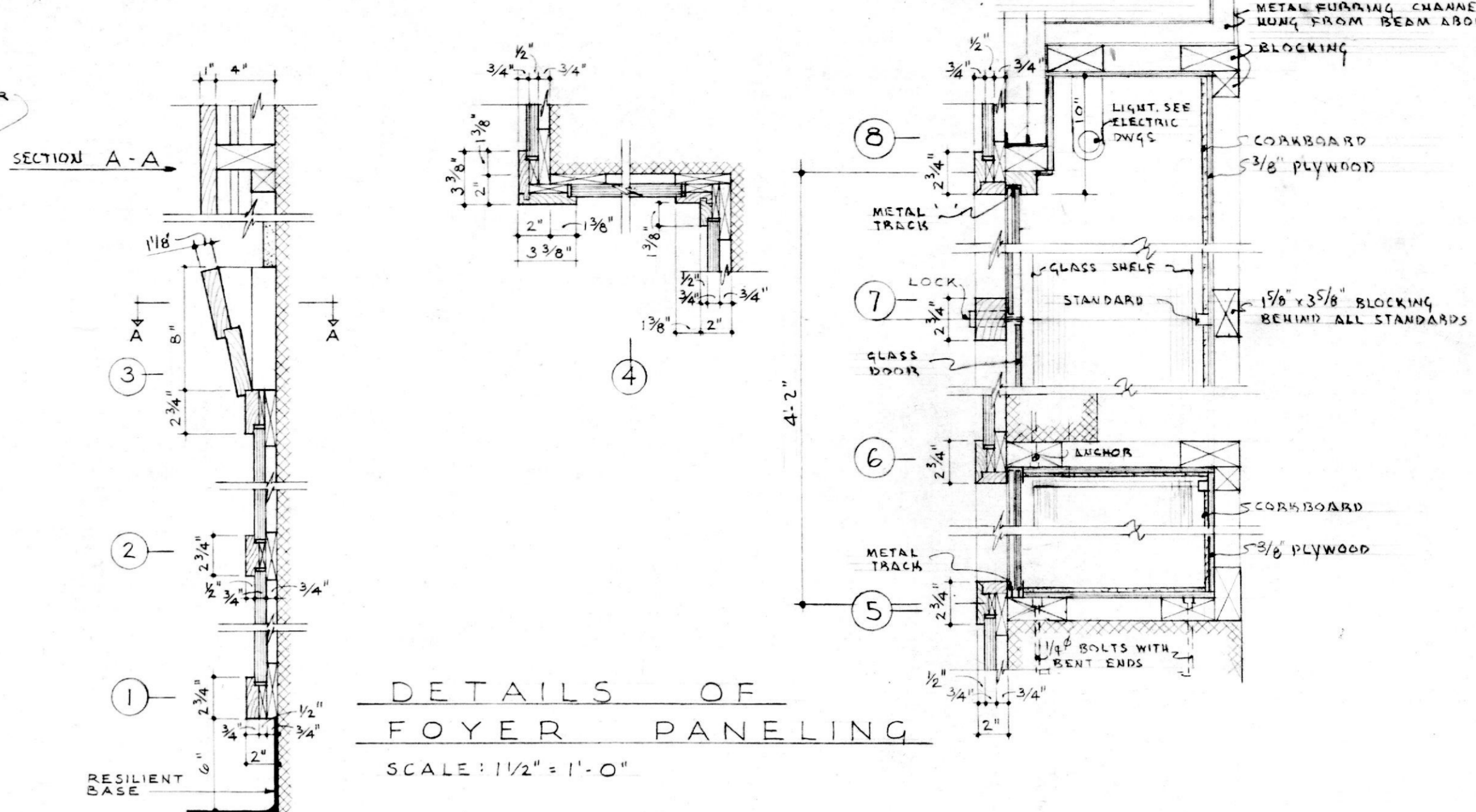


FOYER ELEVATIONS SCALE: 1/4" = 1'-0"



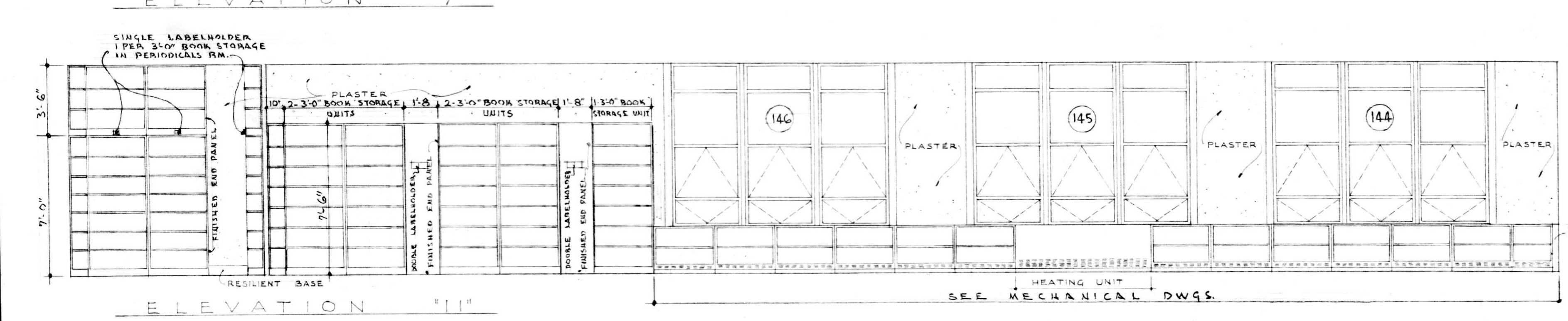
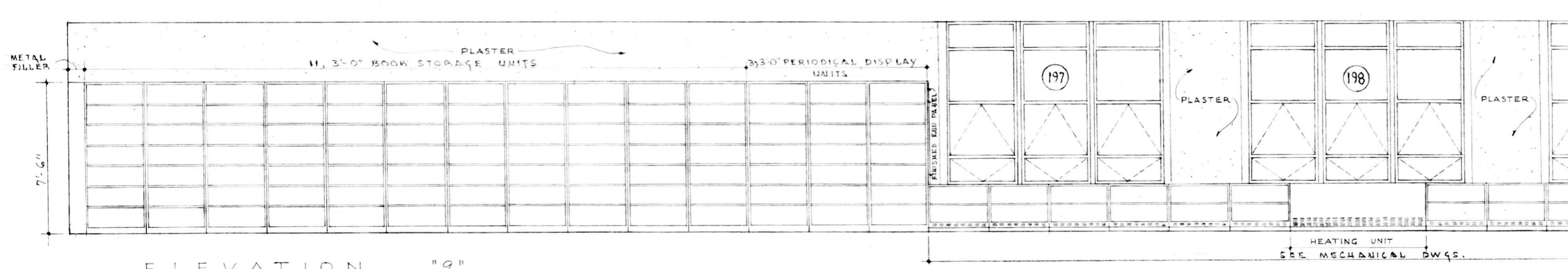
FOYER ELEVATIONS SCALE: 1/4" = 1'-0"



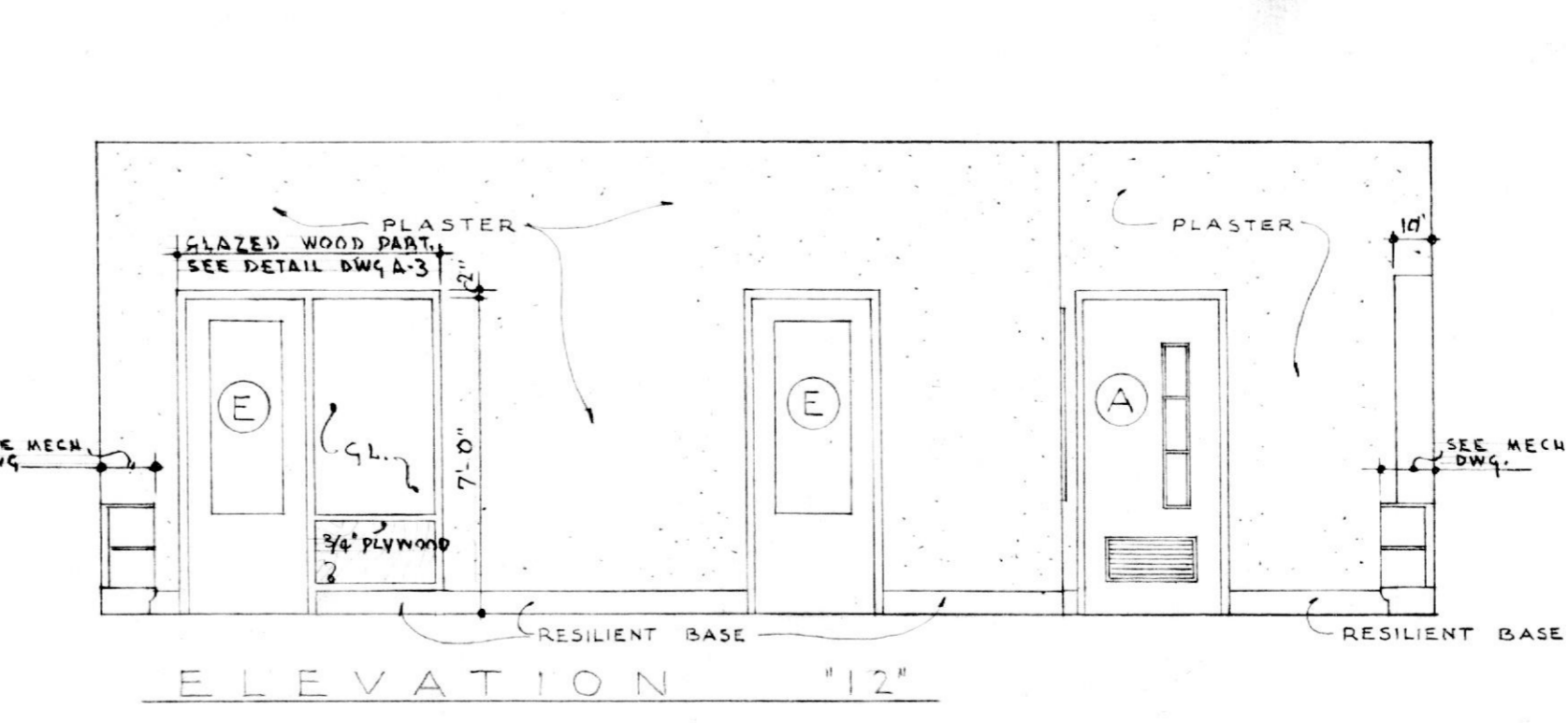
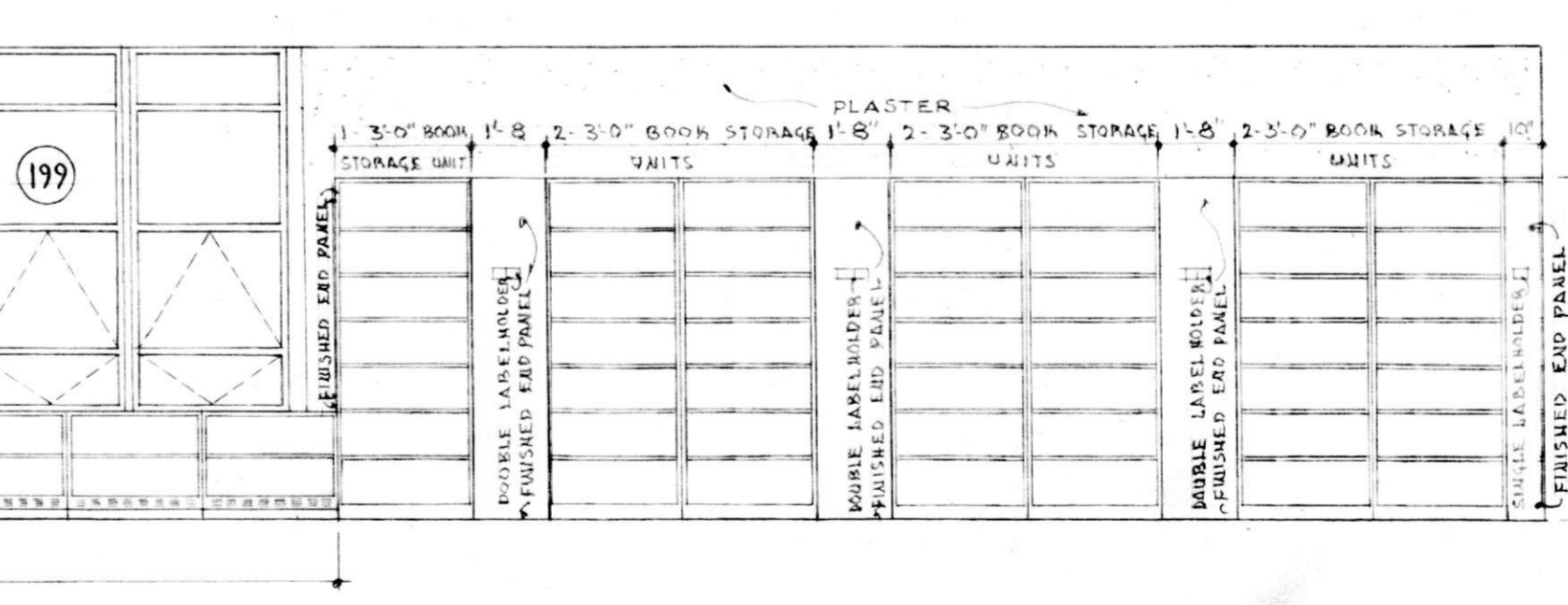
ART ROOM PLAN AND ELEVATIONS SCALE: 1/4" = 1'-0"

ELEVATION '6' and '7' SCALE: 1/4" = 1'-0"

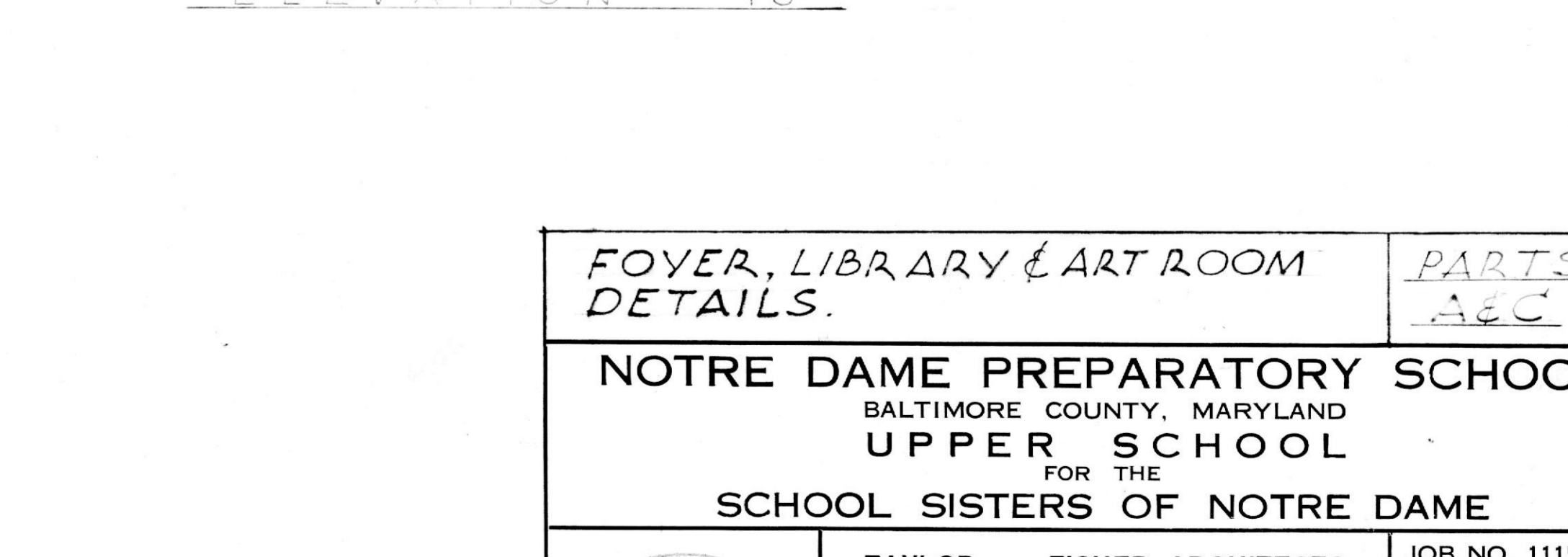
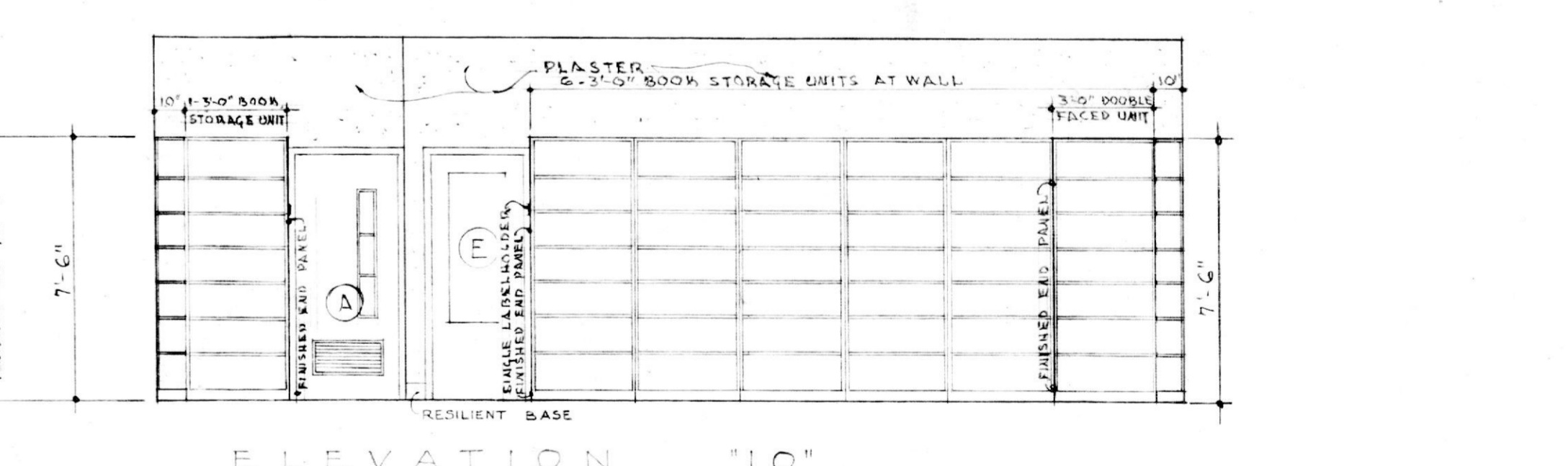
ELEVATION '8' and '9' SCALE: 1/4" = 1'-0"



LIBRARY ELEVATIONS SCALE: 1/4" = 1'-0"



LIBRARY ELEVATIONS SCALE: 1/4" = 1'-0"



LIBRARY ELEVATIONS SCALE: 1/4" = 1'-0"

**FOYER, LIBRARY & ART ROOM DETAILS.**

**NOTRE DAME PREPARATORY SCHOOL**  
BALTIMORE COUNTY, MARYLAND  
UPPER SCHOOL  
FOR THE  
SCHOOL SISTERS OF NOTRE DAME

TAYLOR AND FISHER, ARCHITECTS  
D. K. ESTE FISHER, JR., F.A.I.A. - WARREN A. BOWERSOCK, A.I.A.  
130 W. HAMILTON ST., BALTIMORE 1, MD.

VAN RENSSLAER P. SAXE - STRUCTURAL ENGINEER  
HENRY ADAMS, INC. - MECHANICAL ENGINEERS  
MARTIN FUNNELL - LANDSCAPE ARCHITECT

JOB NO. 1115  
DATE: APRIL 1, 1959  
DRAWING NUMBER  
**A-17**  
OF  
THIS PRINT ISSUED  
APR 7 1959