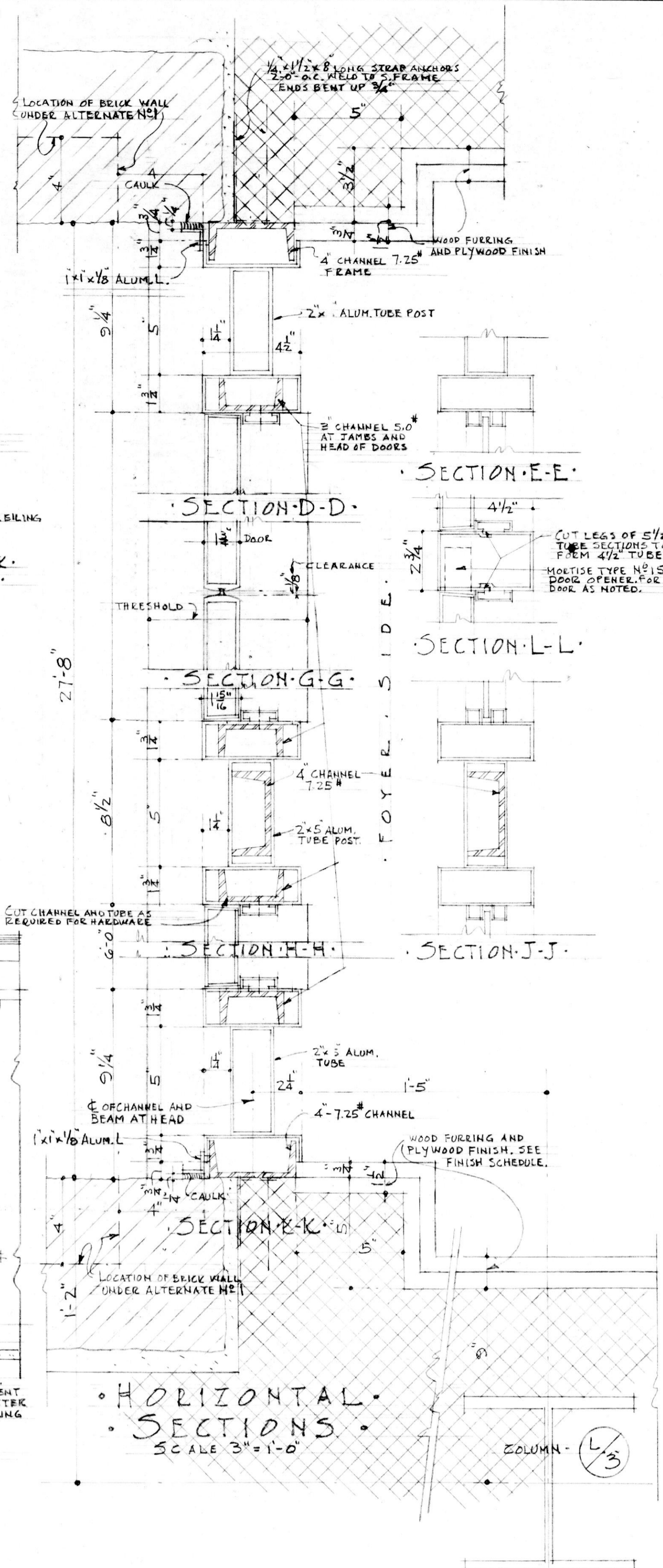
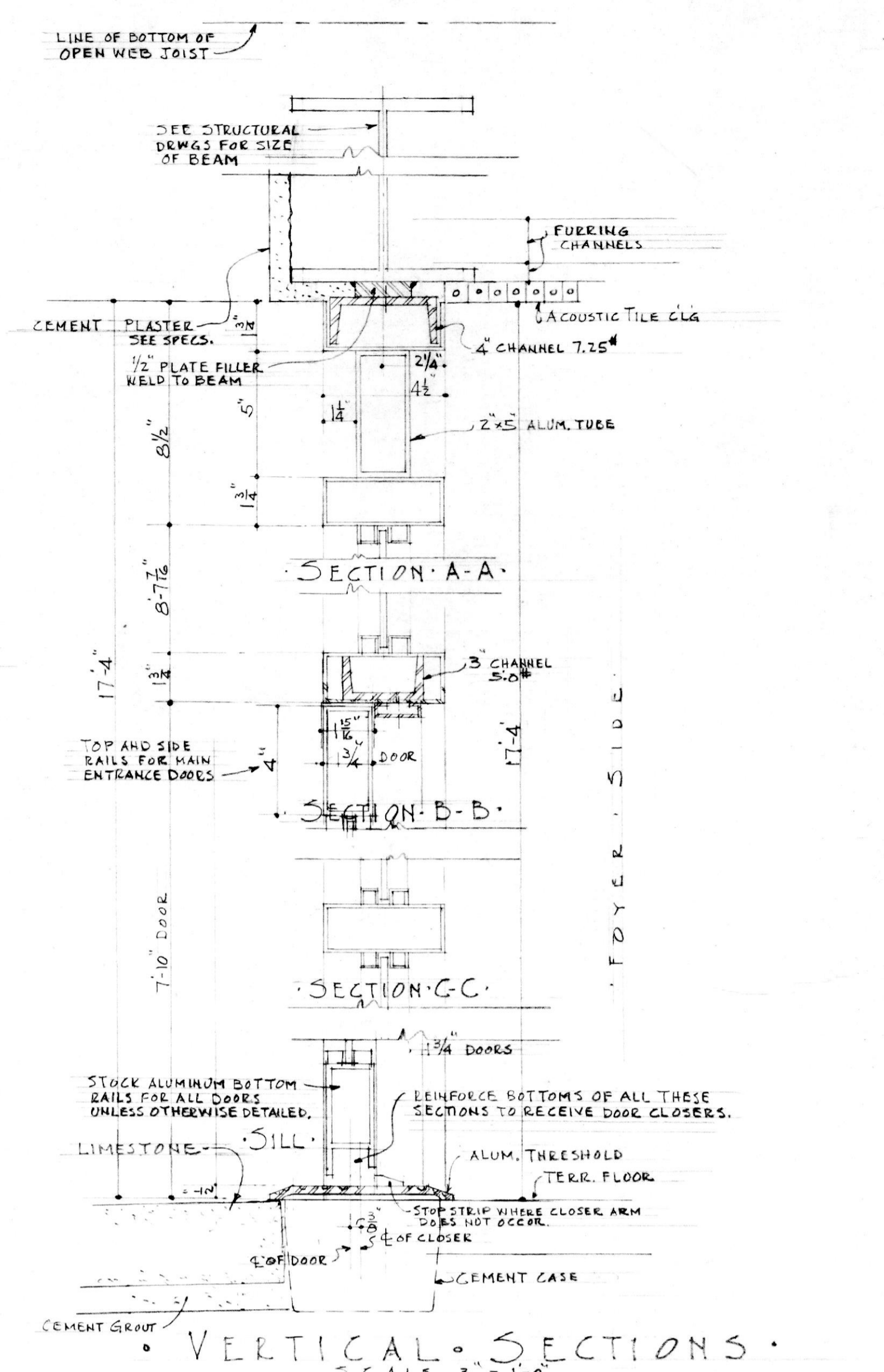


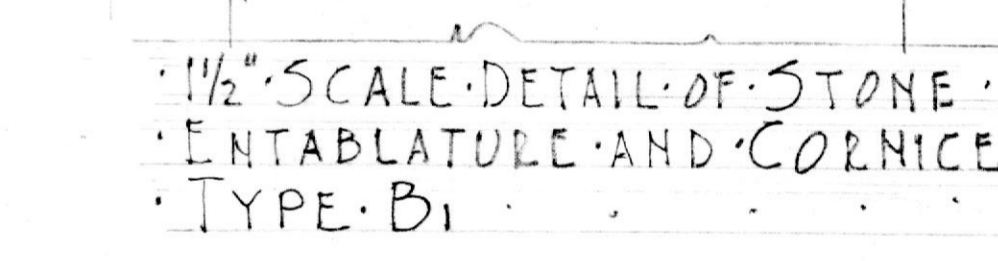
NOTE:
 REFER TO REQUIREMENTS OF SPECIAL HARDWARE FOR ALUMINUM DOORS AND FRAMES. SPECIFIED UNDER SECTION FINISHING HARDWARE OF THE SPECIFICATIONS.



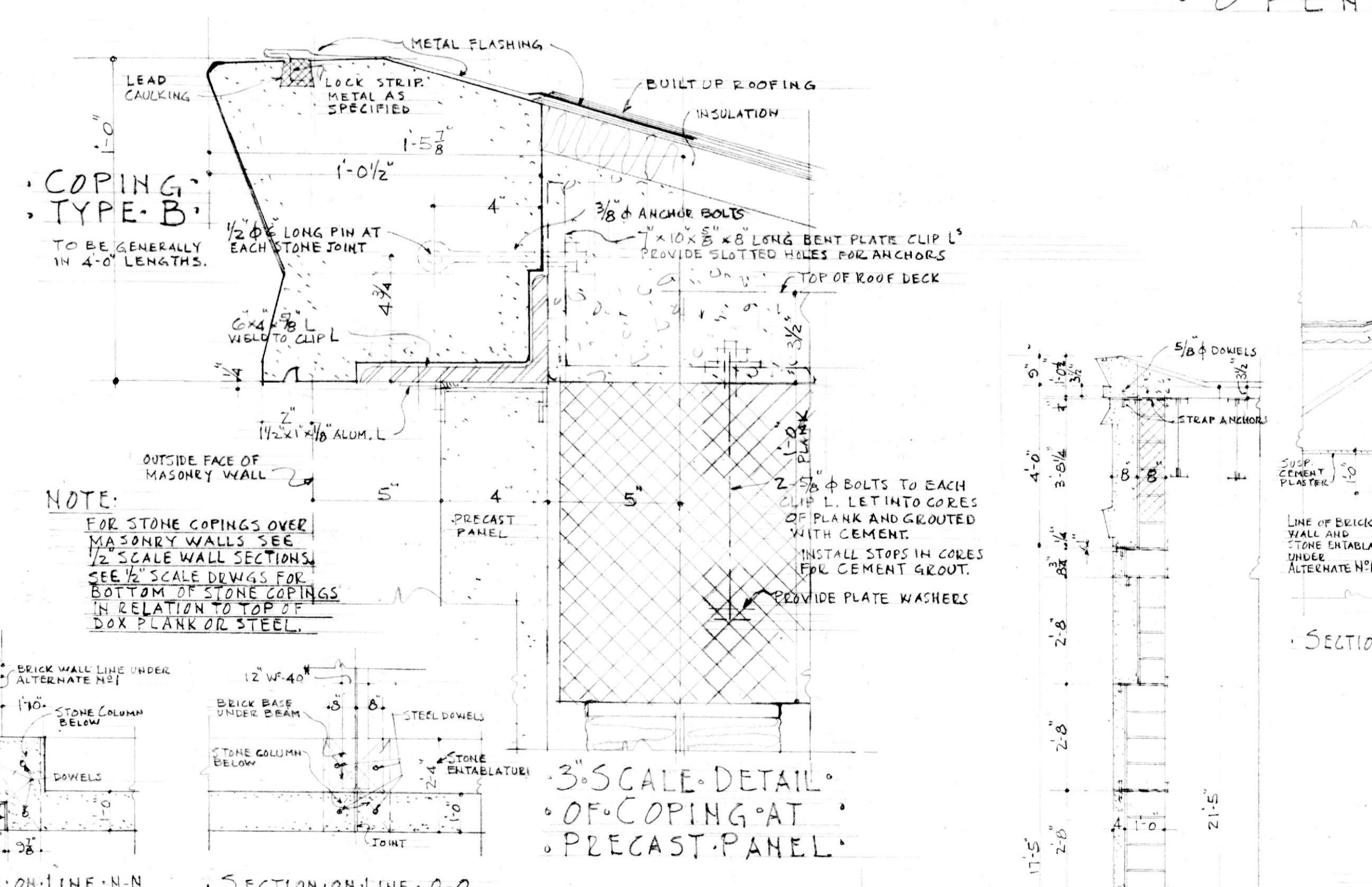
HORIZONTAL SECTIONS SCALE 3/8"=1'-0"



VERTICAL SECTIONS SCALE 3/8"=1'-0"

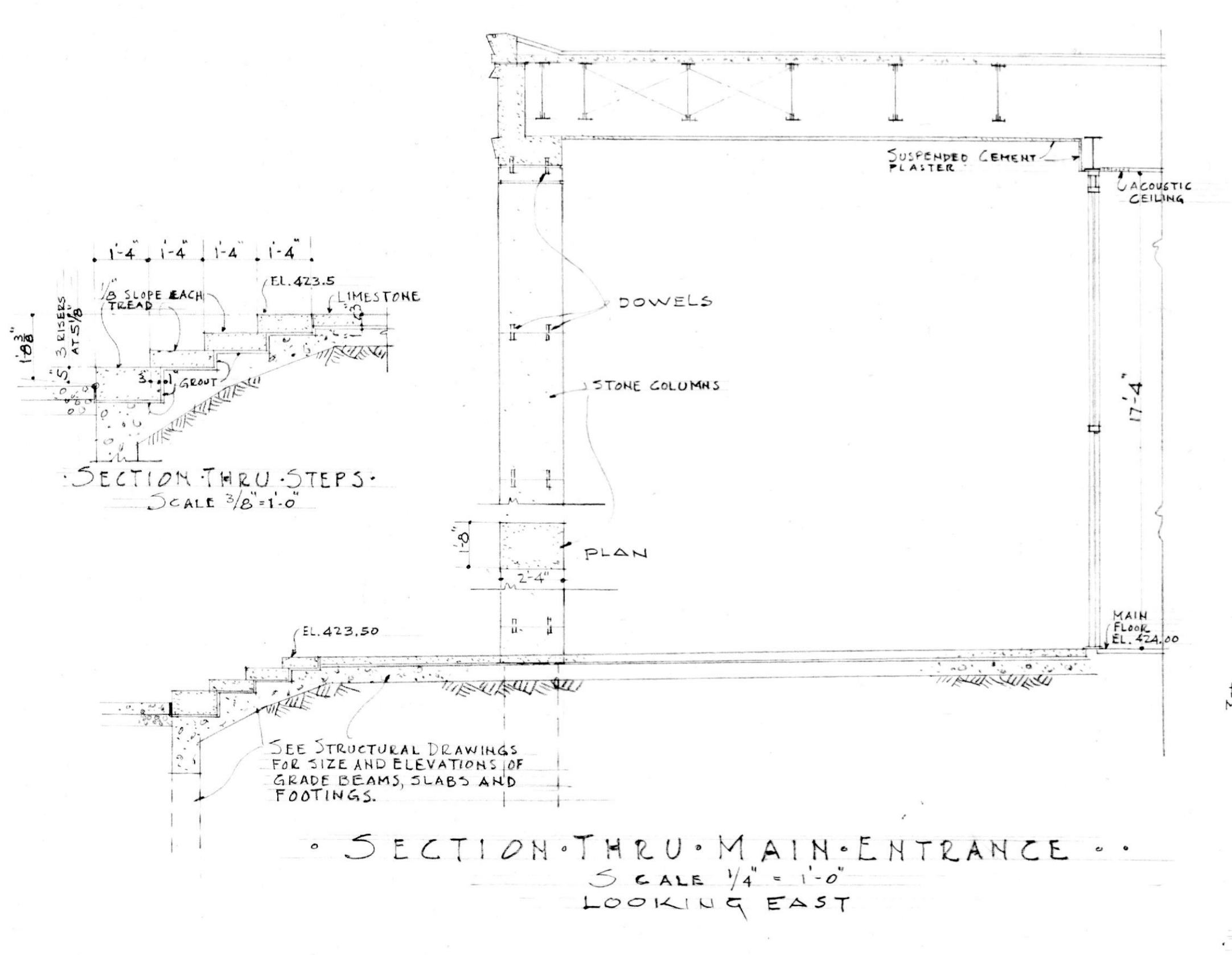


1/2" SCALE DETAIL OF STONE ENTABLATURE AND CORNICE TYPE B

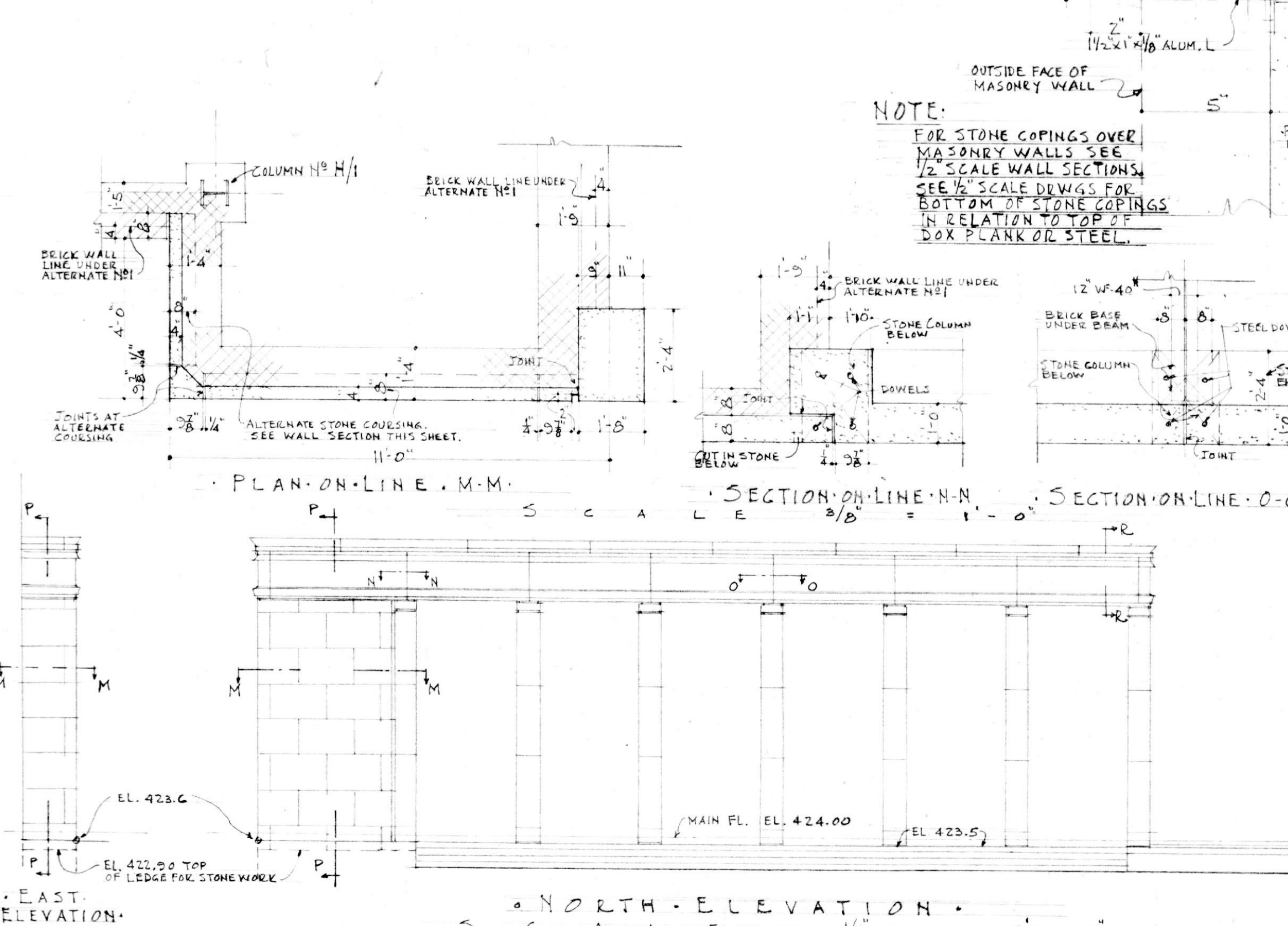


3" SCALE DETAIL OF COPING AT PRECAST PANEL

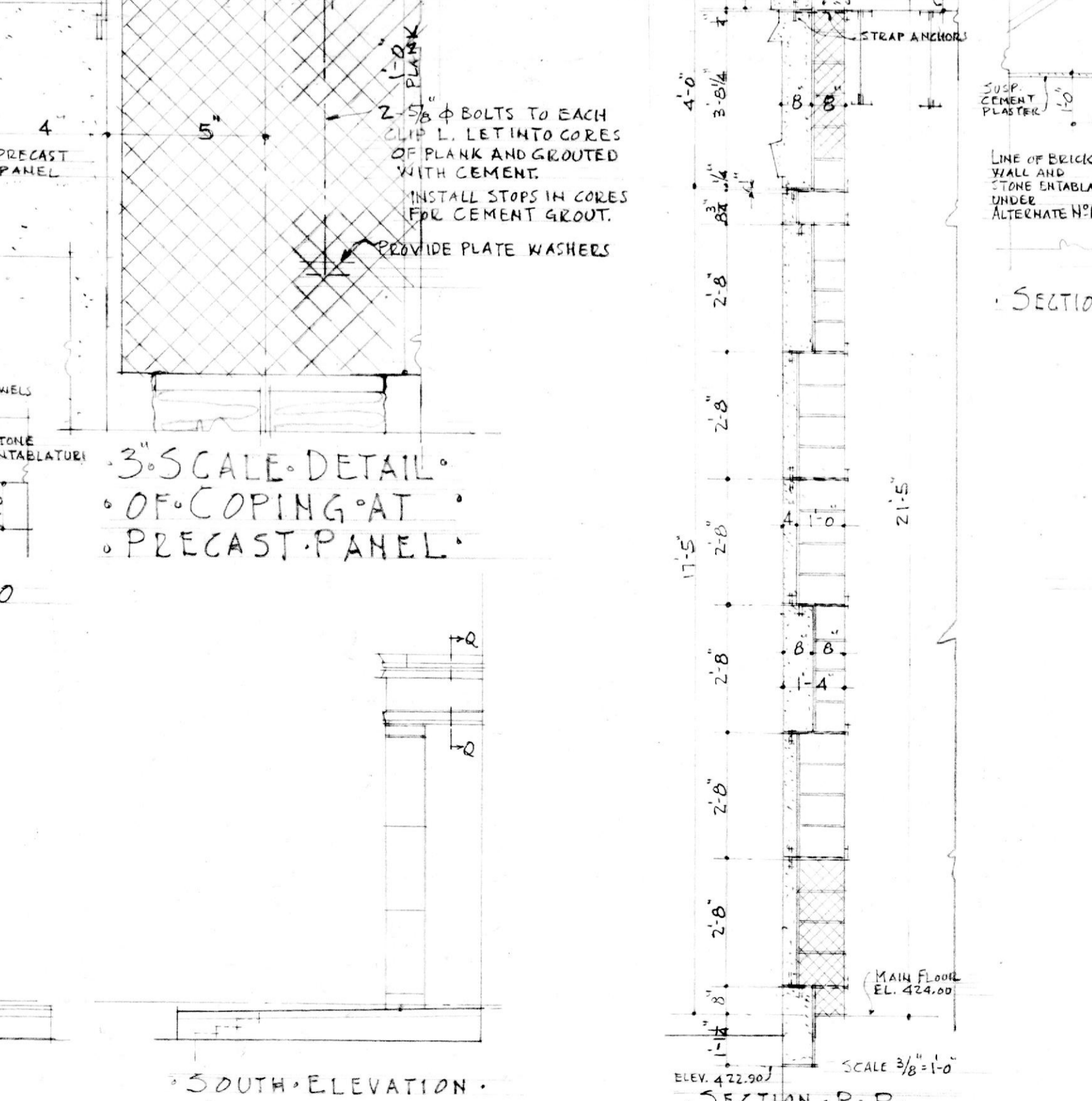
DETAILS OF DOOR FRAMES AND GLASS PANELS AT OPENING BETWEEN WAITING ROOM AND COURT OPENING NO. 186



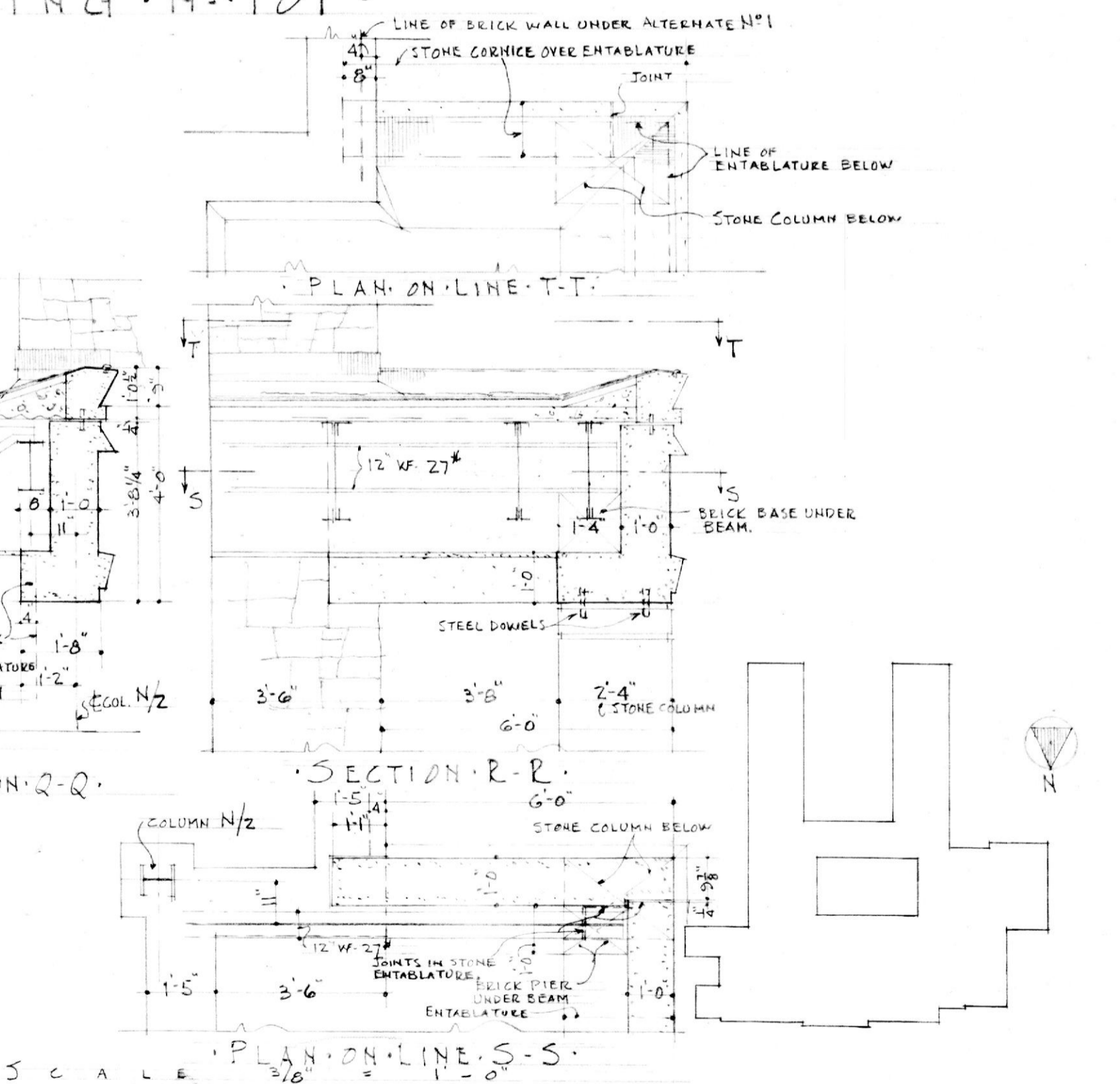
SECTION THROUGH MAIN ENTRANCE SCALE 1/4"=1'-0" LOOKING EAST



NORTH ELEVATION SCALE 1/4"=1'-0"



SOUTH ELEVATION SCALE 1/4"=1'-0"



PLAN ON LINE T-T SCALE 1/4"=1'-0"

EXTERIOR OPENING DETAILS PARTS A, B & C

NOTRE DAME PREPARATORY SCHOOL
 BALTIMORE COUNTY, MARYLAND
 UPPER SCHOOL
 FOR THE
 SCHOOL SISTERS OF NOTRE DAME

TAYLOR AND FISHER ARCHITECTS
 D. K. ESTE FISHER, JR., F.A.S.A., WARREN A. BOWENSON, A.I.A.
 130 W. HAMILTON ST., BALTIMORE 1, MD.

VAN RENSSELAER P. SAXE - STRUCTURAL ENGINEER
 HENRY ADAMS, INC. - MECHANICAL ENGINEERS
 MARTIN FUNNELL - LANDSCAPE ARCHITECT

JOB NO. 1115
 DATE: APRIL 1, 1959

SCALE 1/4"=1'-0"

APR 7 1959