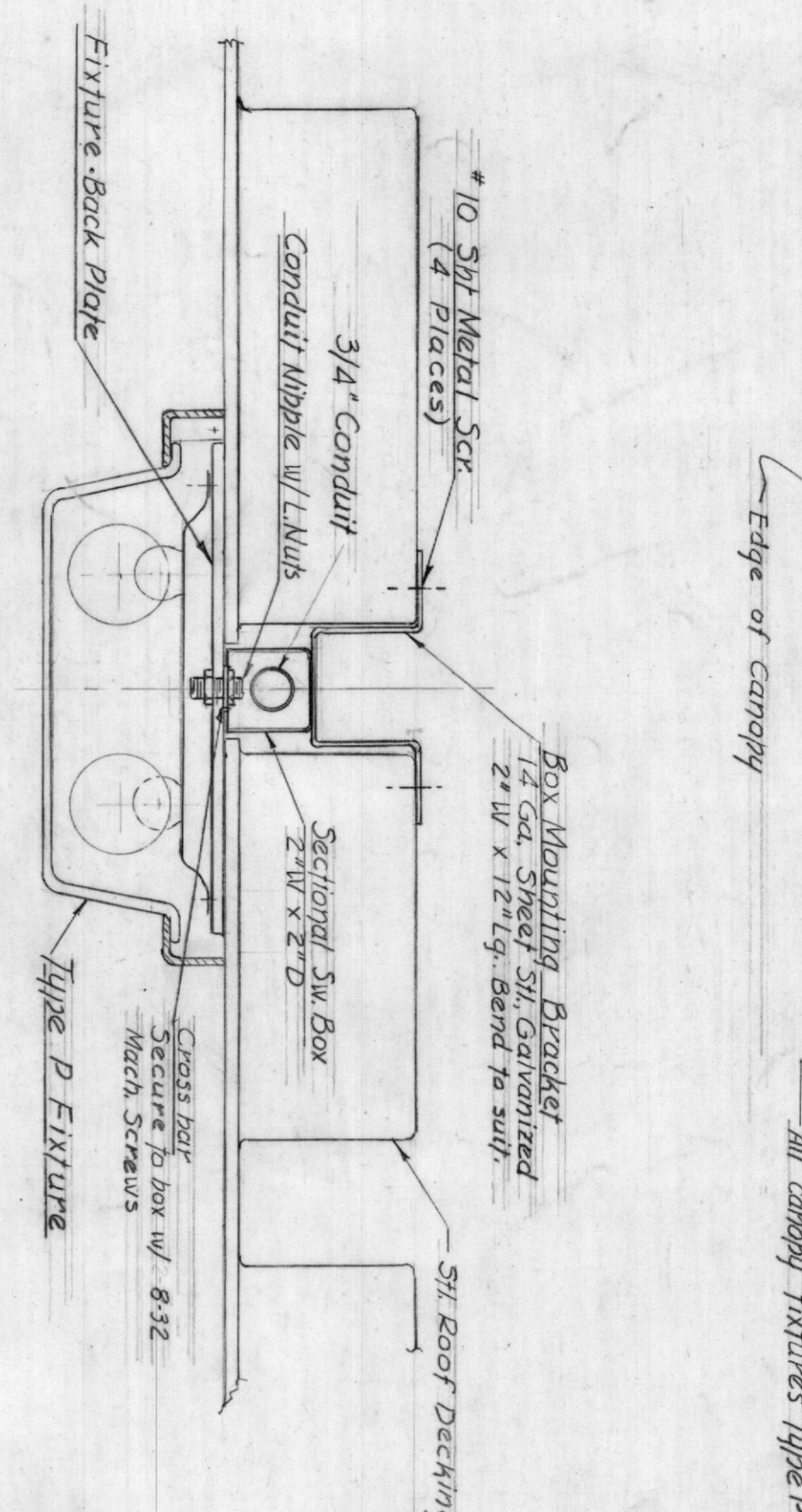


**SECTION A-A**  
Scale 3/4" = 1'-0"



Notes:  
1. Conduits in red lines are 3/4" diameter.  
2. Dimensions shown in blue are for non-ventilated conduits.  
3. Dimensions shown in green are for ventilated conduits.  
4. Dimensions shown in yellow are for ventilated conduits.

SCALE 1/8" = 1'-0"

Notes:  
1. Provide 3 empty 3/4" conduits from lighting panel and cap in corridor ceiling.

**MAIN FLOOR PLAN**  
**PART A**

**NOTRE DAME PREPARATORY SCHOOL**  
**UPPER SCHOOL**  
**SCHOOL SISTERS OF NOTRE DAME**

TAYLOR AND FISHER ARCHITECTS  
BALTIMORE COUNTY, MARYLAND  
130 W. HAMILTON ST., BALTIMORE 1, MD.  
HENRY ADAMS, INC. - MECHANICAL ENGINEERS  
MARTIN FUNNELL - LANSCHPE ARCHITECT

JOB NO. 1115  
DATE: 1/15/59  
**E-3**  
THIS PRINT ISSUED