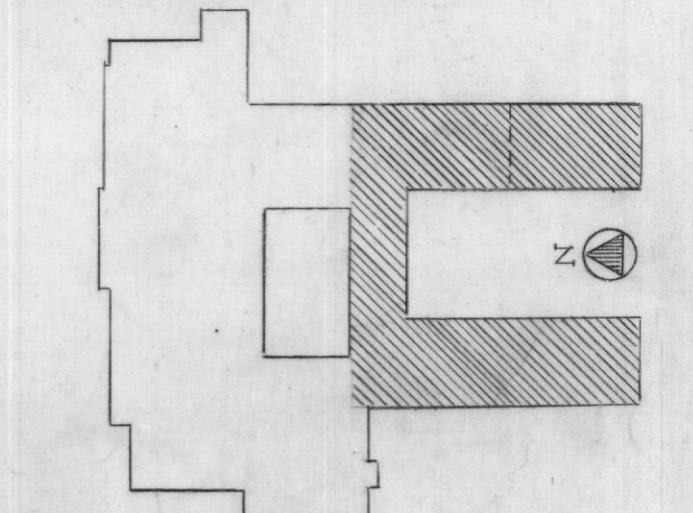


Notes:

1. Under base bid strip 6 empty 3/4" conduits into corridor for ceiling from panel and end of corridor for future extension.
2. Provide 3 empty 3/4" conduits from lighting panel to corridor ceiling.

SYMBOLS

- Floodlight & Pole
- Underground duct line
- DL Electric Door latch
- Panelboard
- Home Run to panel, no of wires, circuits & panel as indicated
- Conduit Run in ceiling or walls. No of pipes indicates number of wires
- Conduit Run in floor
- Ceiling Outlet, Wall Outlet, Inconspicuous, Fixture type as indicated
- Ceiling Outlet, Inc. Square Recessed Fixture, Type as indicated
- Calling Outlet, Fluorescent Strip Lt. Type as indicated
- Calling Outlet, Fluorescent Lig. Fixture, Type as indicated
- Switch, single pole; Switch, 3-way; Switch w/throw light; (Call mt. 50-70)
- Receptacle, Duplex Grounding Type, 1/4", 120 V., 12" up from fire
- Receptacle, Single Grounding Type, 1/4", 120 V., 12" up from fire
- Floor Outlet, Flush w/120V duplex recept. Empty for future extension
- Exit Light; Ceiling, Wall
- Exit Light, with directional arrows as required
- Supervised Clock, Double Face, Single Face - Center, 2' below cft
- 120V Clock Outlet - 6" Mt.
- Laboratory Table Outlet - Single Faced - Double Faced
- Special Purpose Outlet
- Telephone Outlet Wall, 12" high - Floor
- Program Bell
- Fire Alarm Gong, 8" - 2'-0" below finished ceiling
- Fire Alarm Station, 4'-6" High
- Fire Alarm Station, 5.0 High; Man. Motor Start, 2x w/100L 11.5'0 High
- Speaker - Ceiling Mt. Wall Mt. - 8' high
- Speaker System, call-in push-button, 4'-6" high
- Motor
- Junction Box
- Buzzer - sound system; Buzzer - front door
- Transformer - for door bell and door lock
- Thermostat, 3'-0" High - Aquastat
- Low Voltage Push-button
- Push-button, 5/16", as specified



MAIN FLOOR PLAN

NOTRE DAME PREPARATORY SCHOOL
BALTIMORE COUNTY, MARYLAND
UPPER SCHOOL

SCHOOL SISTERS OF NOTRE DAME

TAYLOR AND FISHER ARCHITECTS
DATE: APRIL 1, 1959
130 W. HAMILTON ST., BALTIMORE 1, MD.
VAN ROSSIGER P. SAGE - STRUCTURAL ENGINEER
HENRY ADAMS, INC. - MECHANICAL ENGINEERS
MARTIN RUMELT - LANDSCAPE ARCHITECT

JOB NO. 1115
DATE: APRIL 1, 1959
DRAWING NUMBER
E-6
THIS DRAWING IS A PART OF THE CONTRACT DOCUMENTS FOR THE PROJECT.