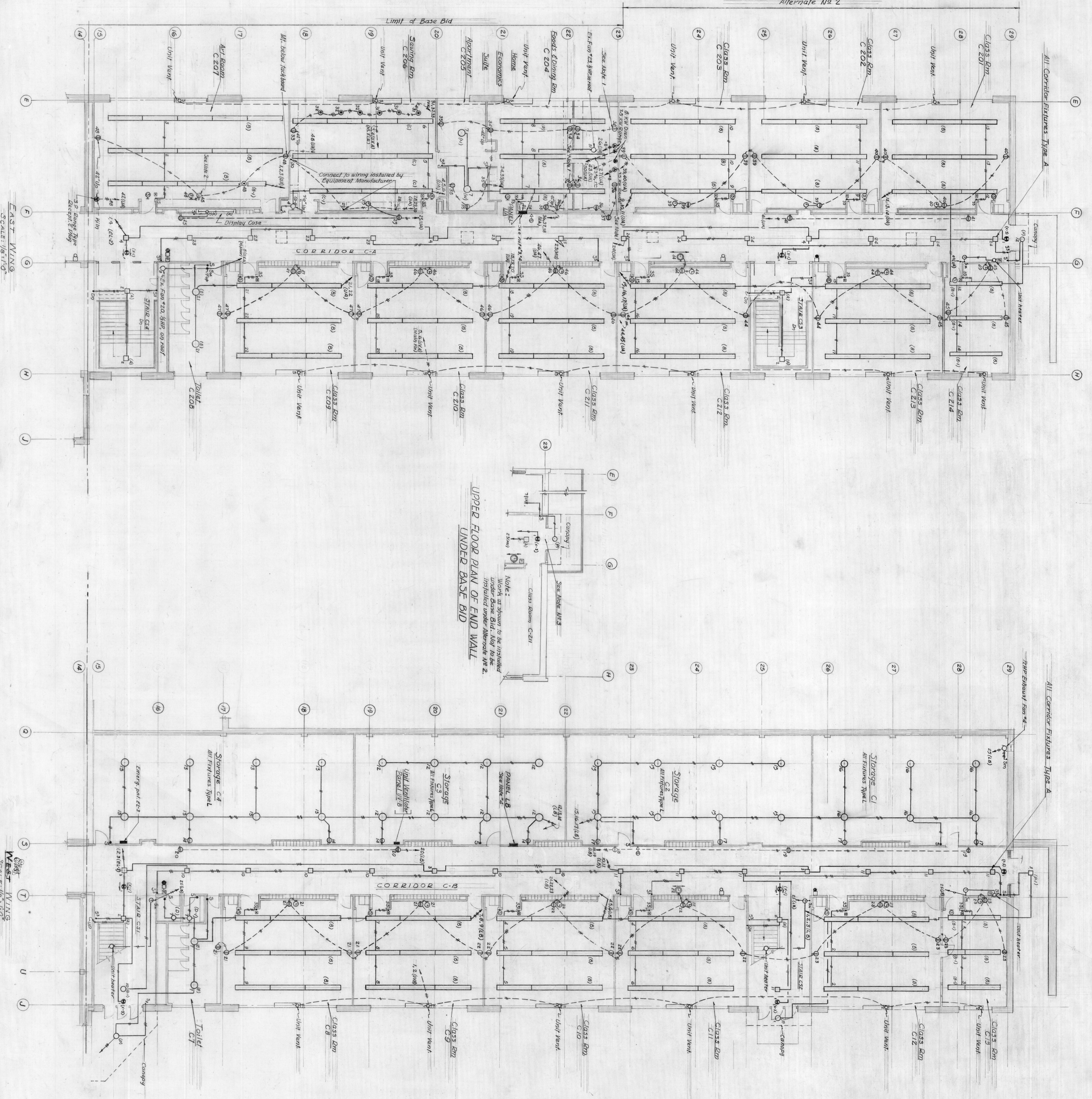
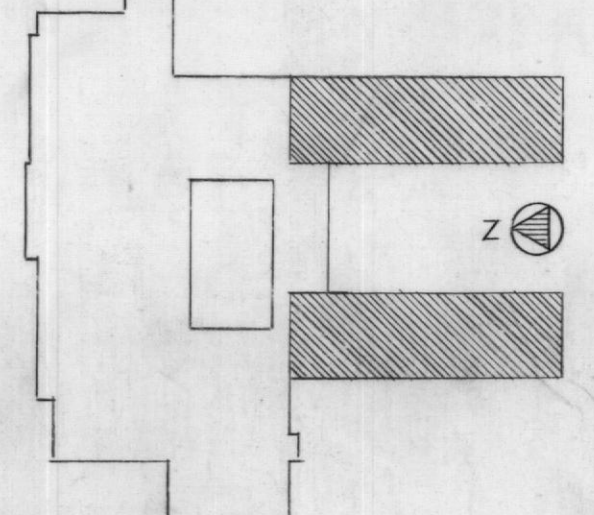


Alternate No 2



UPPER FLOOR PLAN OF END WALL
 WORK AS SHOWN TO BE INSTALLED UNDER BASE BID. NOT TO BE INSTALLED UNDER ALTERNATE NO 2.

- Notes:
1. Install receptacle above counter top.
 2. Install receptacle in toe space below cabinets.
 3. Under Base Bid sub G empty. 3/4" conduit into corridor ceiling from panel and cap up end of corridor for future expansion.
 4. Sub 3 empty. 3/4" conduit into corridor ceiling from panel and cap.



UPPER FLOOR PLAN, EAST WING
 LOWER FLOOR PLAN, WEST WING
NOTRE DAME PREPARATORY SCHOOL
 UPPER SCHOOL
 FOR THE
 SCHOOL SISTERS OF NOTRE DAME

TAYLOR AND FISHER ARCHITECTS
 BALTIMORE COUNTY, MARYLAND
 130 W. HAMILTON ST., BALTIMORE 1, MD.
HENRY ADAMS, INC. - MECHANICAL ENGINEERS
 MARTIN FINNELL - LANDSCAPE ARCHITECT

JOB NO. 1115
 DATE: APRIL 1, 1959
E-7
 THIS PRINT ISSUED

EAST WING
 SCALE: 1/8" = 1'-0"

WEST WING
 SCALE: 1/8" = 1'-0"