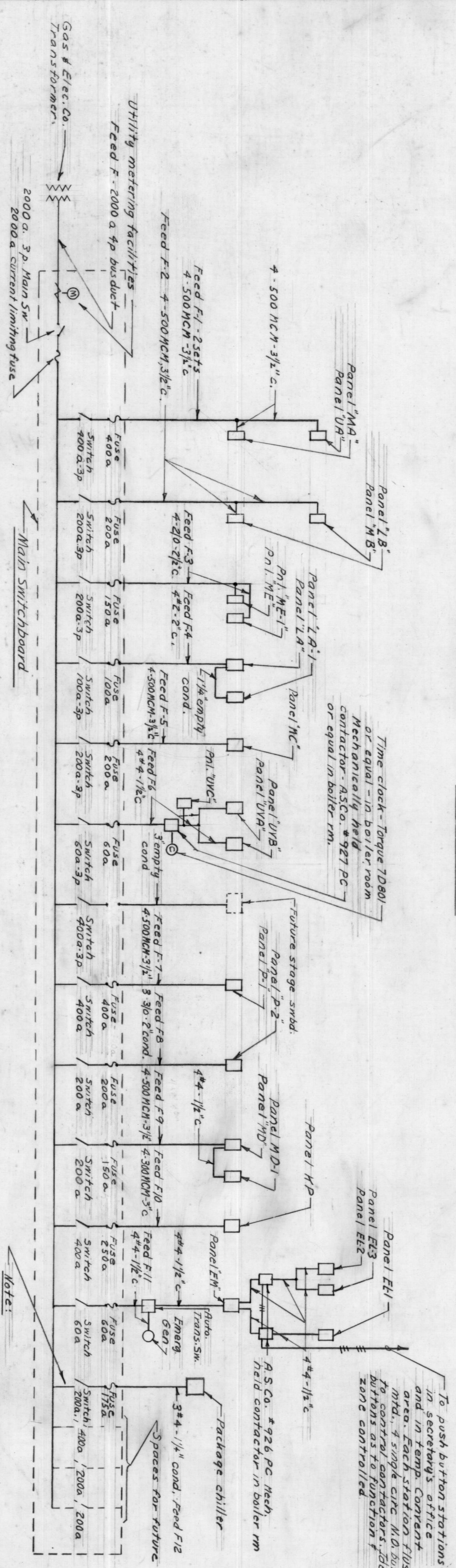


Notes:

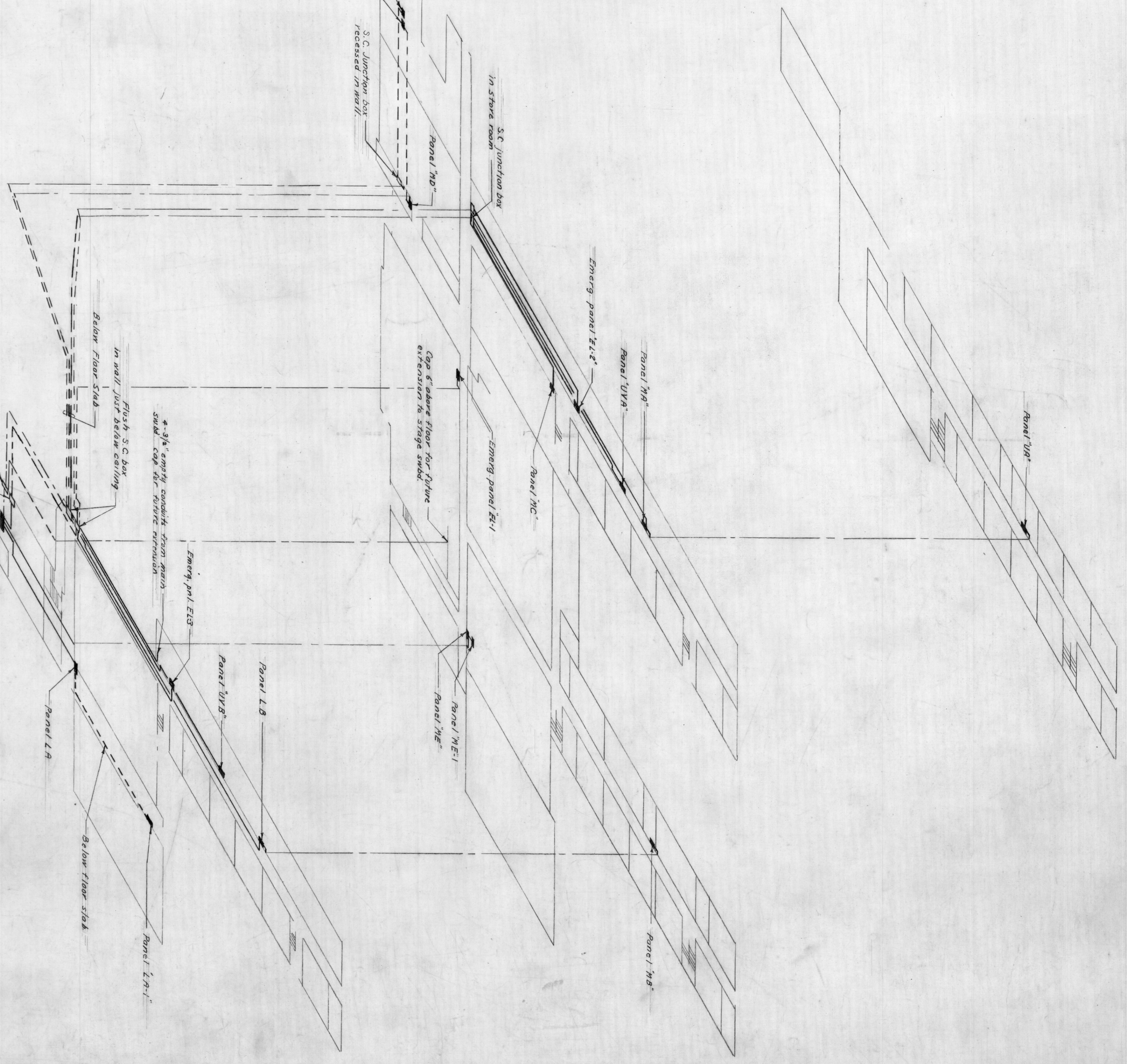
1. Bell work shall be shown as follows:
 - a. Circuits - 1/2\"/>
2. Under base and under base side of ceiling shall be shown as follows:
 - a. 1/2\"/>
3. All wiring shall be shown as follows:
 - a. 1/2\"/>
4. Change in program in the following areas:
 - a. 1/2\"/>

ISOMETRIC DIAGRAM - CLOCK & PROGRAM SYSTEMS
1/8\"/>



LINE DIAGRAM - ELECTRICAL DISTRIBUTION
1/8\"/>

Panel	Panel Schedule	Remarks
Panel 1A	See schedule on page E-2	
Panel 1B	See schedule on page E-2	
Panel 1C	See schedule on page E-2	
Panel 1D	See schedule on page E-2	
Panel 1E	See schedule on page E-2	
Panel 1F	See schedule on page E-2	
Panel 1G	See schedule on page E-2	
Panel 1H	See schedule on page E-2	
Panel 1I	See schedule on page E-2	
Panel 1J	See schedule on page E-2	
Panel 1K	See schedule on page E-2	
Panel 1L	See schedule on page E-2	
Panel 1M	See schedule on page E-2	
Panel 1N	See schedule on page E-2	
Panel 1O	See schedule on page E-2	
Panel 1P	See schedule on page E-2	
Panel 1Q	See schedule on page E-2	
Panel 1R	See schedule on page E-2	
Panel 1S	See schedule on page E-2	
Panel 1T	See schedule on page E-2	
Panel 1U	See schedule on page E-2	
Panel 1V	See schedule on page E-2	
Panel 1W	See schedule on page E-2	
Panel 1X	See schedule on page E-2	
Panel 1Y	See schedule on page E-2	
Panel 1Z	See schedule on page E-2	



ISOMETRIC DIAGRAM - ELECTRICAL DISTRIBUTION
1/8\"/>

NOTRE DAME PREPARATORY SCHOOL
ELECTRICAL DISTRIBUTION SYSTEM

TAYLOR AND FISHER ARCHITECTS
DATE: 10/14/1959

HENRY ADAMS, INC. - MECHANICAL ENGINEERS

MARTIN FANNELL - LANDSCAPE ARCHITECT

JOB NO. 1115
E-9