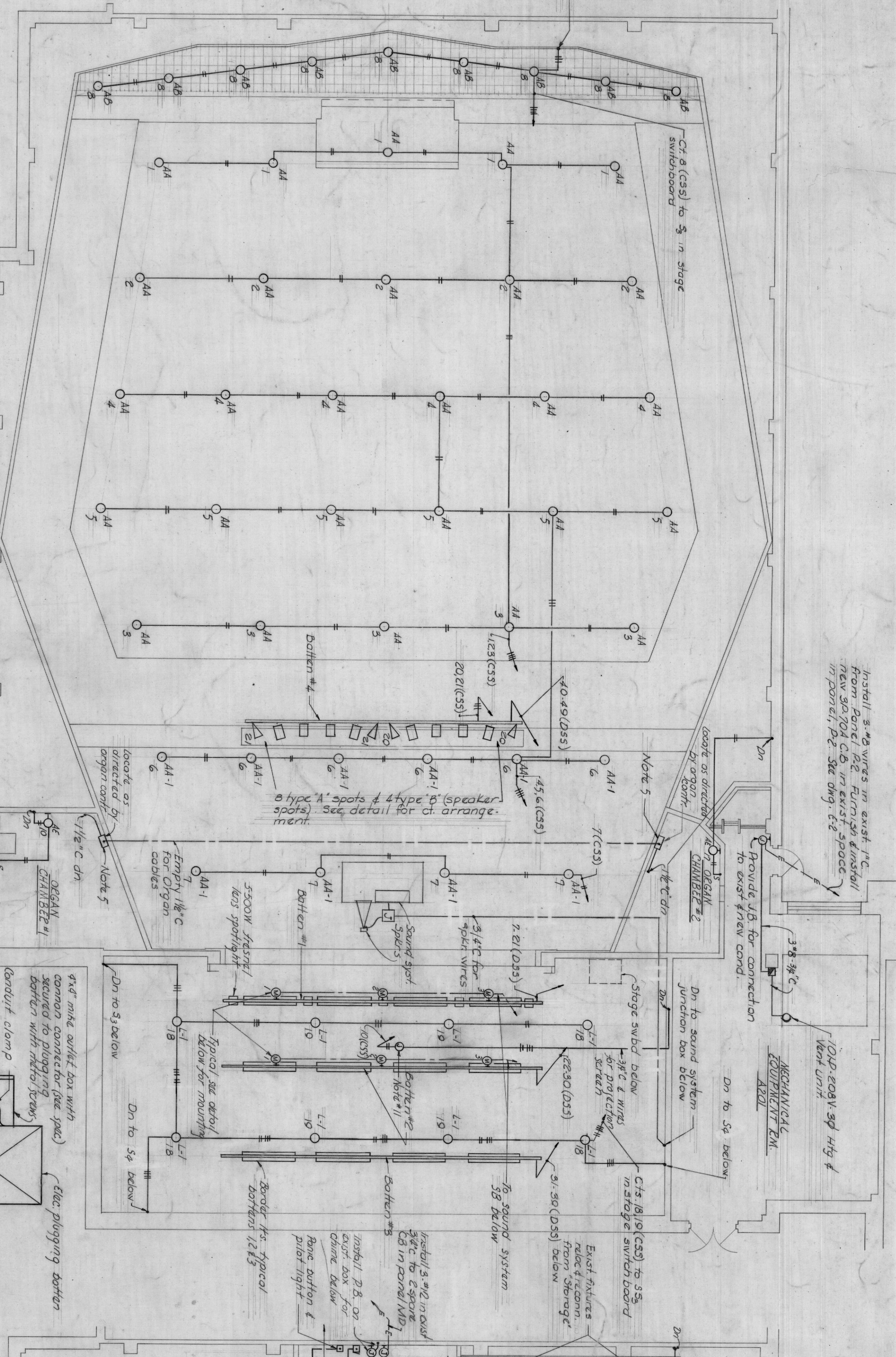


ELECTRICAL SYMBOLS

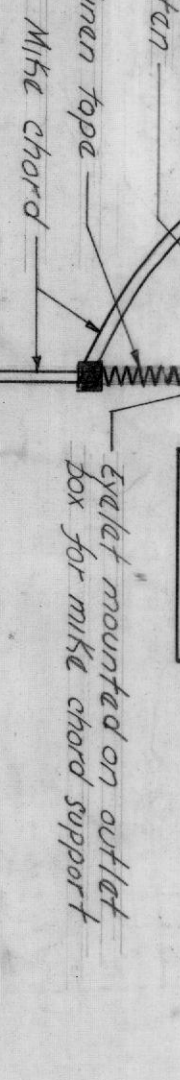
SYMBOL	DESCRIPTION
○	CELLING TYPE INCANDESCENT FIXTURE
□	WALL MOUNTED INCANDESCENT FIXTURE
⊞	WALL MOUNTED EXIT SIGN
⊞	DURUM DANGEROUS RECEIPT MTD UP
⊞	RETURN CALL BUZZER SYSTEM FLOOR OUTLET
⊞	SINGLE POLE SWITCH
⊞	DOUBLE POLE SWITCH
⊞	THREE WAY SWITCH
⊞	FOUR WAY SWITCH
⊞	CONTROL SUPPLEMENTED SYSTEM
⊞	JUNCTION BOX
⊞	FIRE ALARM STATION
⊞	FIRE ALARM BELL
⊞	PANEL BOARD
⊞	CIRCUIT BREAKER OR SAFETY SWITCH
⊞	MOTOR STARTER TYPE AS SPECIFIED
⊞	MANUAL MOTOR SWITCH
⊞	MOTOR
⊞	THERMOSTAT
⊞	PUSHBUTTON STATION
⊞	CHIME
⊞	RETURN CALL BUZZER SYSTEM WALL OUTLET
⊞	TWO GANG SINGLE POLE ROCKET
⊞	BILL FOR PROGRAM SYSTEM
⊞	FLOOR OUTLET FOR MICROPHONE
⊞	CONDUIT AT OR UNDER FLOOR
⊞	CONDUIT FOR LOW TENSION SYSTEMS
⊞	EXISTING CONDUIT
⊞	FLOOR BOX WITH SINGLE GAUGE RECEPTACLE

- NOTES
- Extend #12-1/2" 1/2" up to seat light furnished by seating contractor from existing floor box concealed (chip and replace) con-
 - Extend #12-1/2" rigid conduit up to seat light furnished by seating contractor. From existing floor box shall be installed
 - All conductors, receptacles and junction boxes shall be installed in face of floor riser in new concrete fill. See Arch. Dwg. #4-5.
 - Provide 4"x4"x4" flush using short 1/2" C gaskets.
 - with 3/4" round banded holes.
 - Two circuits to existing panel Et-1 in existing conduct.
 - Point on existing outlets and connect to existing systems.
 - Reinstalling at this point interconnect existing and new conductis
 - See schedule of stage switchboard this sheet.
 - Install wiring in conduit to return call buzzer mounted in face of stage switchboard.
 - Location as directed power on ceiling for projection screen.
 - Installation and conduit up to projection screen outlet above.
 - Fanubution and conduit up to projection screen outlet above.
 - No 2 switches in stage switchboard.



SELECTED CEILING PLAN
Scale 1/4"=1'-0"

DETAIL OF MIKE OUTLET MOUNTING ON PUSHPATTEN



PLAN OF AREA ABOVE CEILING
Scale 1/4"=1'-0"

SCHEDULE OF STAGE SWITCHBOARD

CT	ITEM SERVICE	LOAD	CIRCUIT BREAKER	BUSBAR	REMARKS
1	HOUSE LIGHTS	3000W	30A	30	
2		1200W	12A	12	
3		1200W	12A	12	
4		1200W	12A	12	
5		1200W	12A	12	
6		1200W	12A	12	
7		1200W	12A	12	
8		1200W	12A	12	
9		1200W	12A	12	
10		1200W	12A	12	
11		1200W	12A	12	
12		1200W	12A	12	
13		1200W	12A	12	
14		1200W	12A	12	
15		1200W	12A	12	
16		1200W	12A	12	
17		1200W	12A	12	
18		1200W	12A	12	
19		1200W	12A	12	
20		1200W	12A	12	
21		1200W	12A	12	
22		1200W	12A	12	
23		1200W	12A	12	
24		1200W	12A	12	
25		1200W	12A	12	
26		1200W	12A	12	
27		1200W	12A	12	
28		1200W	12A	12	
29		1200W	12A	12	
30		1200W	12A	12	

ELECTRICAL ABBREVIATIONS

LETTER	DESCRIPTION
A	AMPERES
V	VOLTS
KV	KILOVOLTS
Φ	PHASE
Ct	CIRCUIT
CD	CONDUIT
Wt	WEATHERPROOF
FBR	FEEDER
SWB	SWITCHBOARD
SPK	SPEAKER
T.S.	TIME SWITCH
SYS	SYSTEM
SS	SAFETY SWITCH
CB	CIRCUIT BREAKER
OP	ONE POLE
TP	TWO POLE
3P	THREE POLE
SI	SINGLE THROW
DI	DOUBLE THROW
F	FUSED
NF	NON-FUSED
S/N	SOLID NEUTRAL
P/S	PUSHBUTTON
FL	PILOT LIGHT
NO	NORMALLY OPEN
NC	NORMALLY CLOSED
HQA	HAND-OFF-AUTOMATIC
JB	JUNCTION BOX

