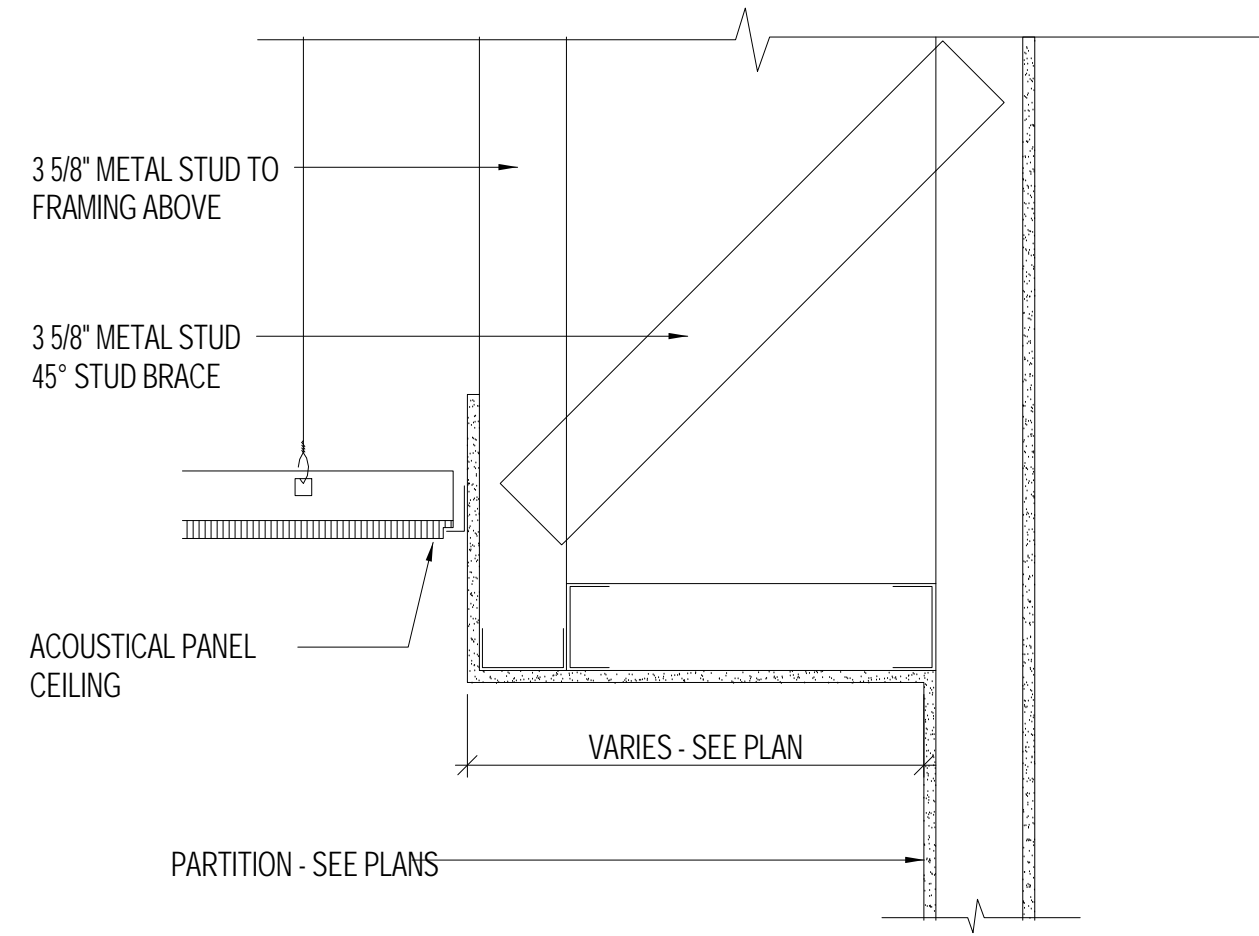
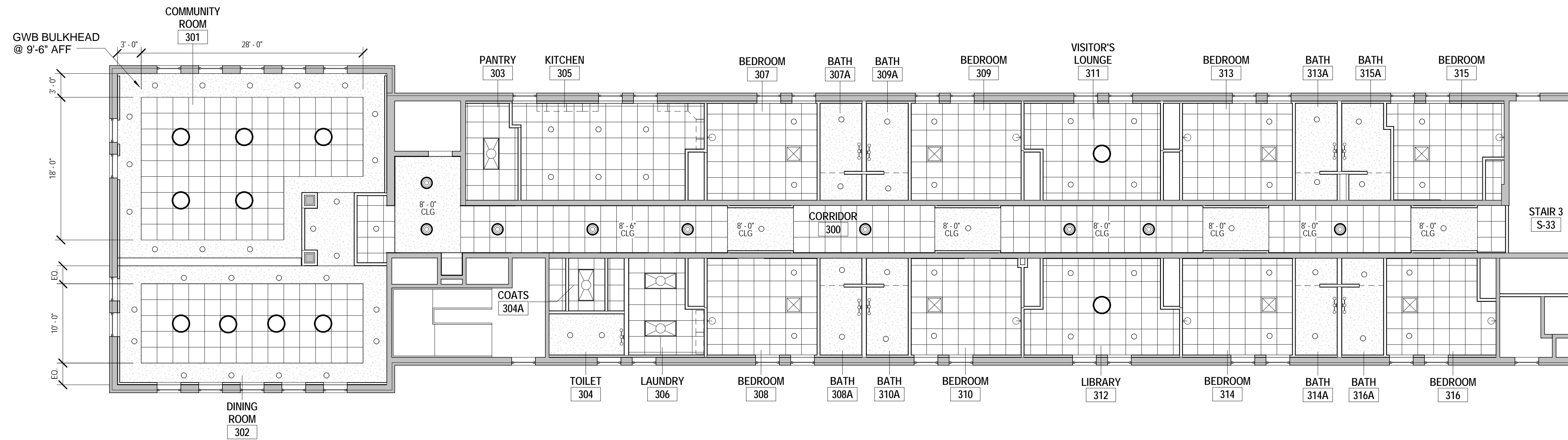


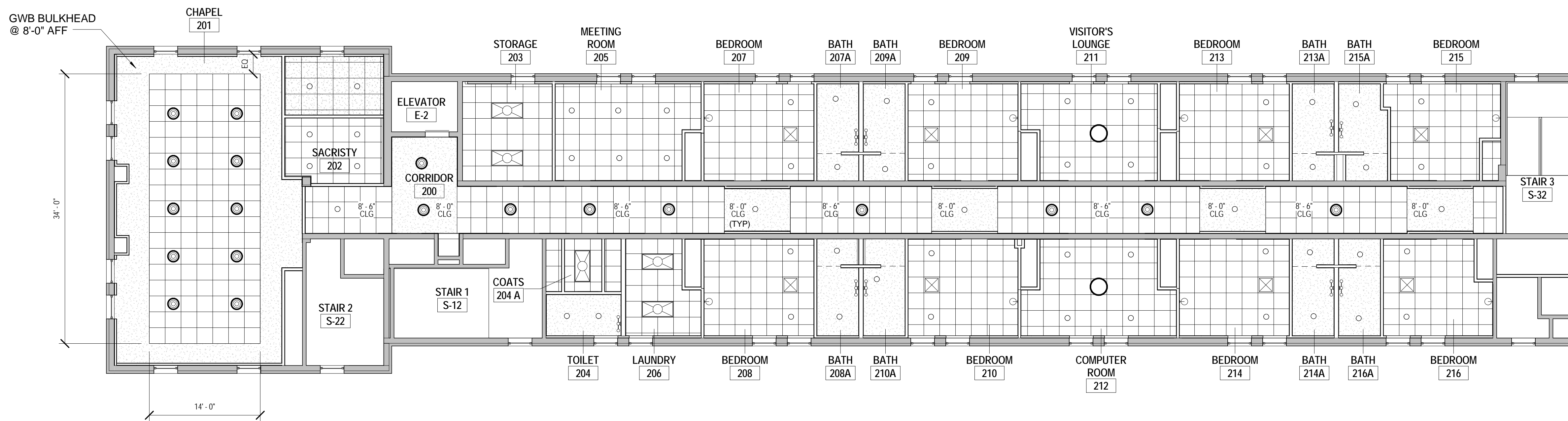
1D TYPICAL CEILING DETAIL-1  
1 1/2" = 1'-0"



2D THIRD FLOOR  
1/8" = 1'-0"



2C SECOND FLOOR  
1/8" = 1'-0"



**GENERAL CEILING NOTES:**

1. LIGHTS IN SHOWERS/ BATH SHALL BE LENSED. RATED FOR WET LOCATIONS
2. COAT CLOSETS SHALL RECEIVE A WALL LIGHT THAT IS OPERATED BY OPENING THE CLOSET DOOR
3. BEDROOM CEILINGS TO BE 8'-6" +/- AFF
4. BATHROOM CEILINGS TO BE 8'-0" AFF

**RCP LEGEND**

- RECESSED DOWNLIGHT
- PENDANT LIGHT A
- CEILING MTD LIGHT B
- WALL MTD LIGHT B
- RECESSED LIGHT 2'X4'
- VANITY LIGHT-WALL MOUNTED
- SHOWER CURTAIN ROD
- CEILING MTD VRV CASSETTE UNIT -2'X2'
- PTD GWB
- 2 X 2 ACOUSTIC CEILING ARMSTRONG DUNE W/ 9/16" GRID



810 Light Street Baltimore, Md 21230

Professional Certification: I certify that these documents were prepared or approved by me, and that I am a duly licensed architect under the laws of the State of Maryland.

License No:9473 Expiration Date:4/7/2015

NO	DATE	DESCRIPTION
1	06-17-13	PERMIT SET

REVISIONS

NOTRE DAME  
PREP CONVENT  
RENOVATION

REFLECTED CEILING  
PLAN

PROJ. NO.: 13007-00	DWG NO.
DRAWN BY: AR	A-112
DATE: 06-13-13	