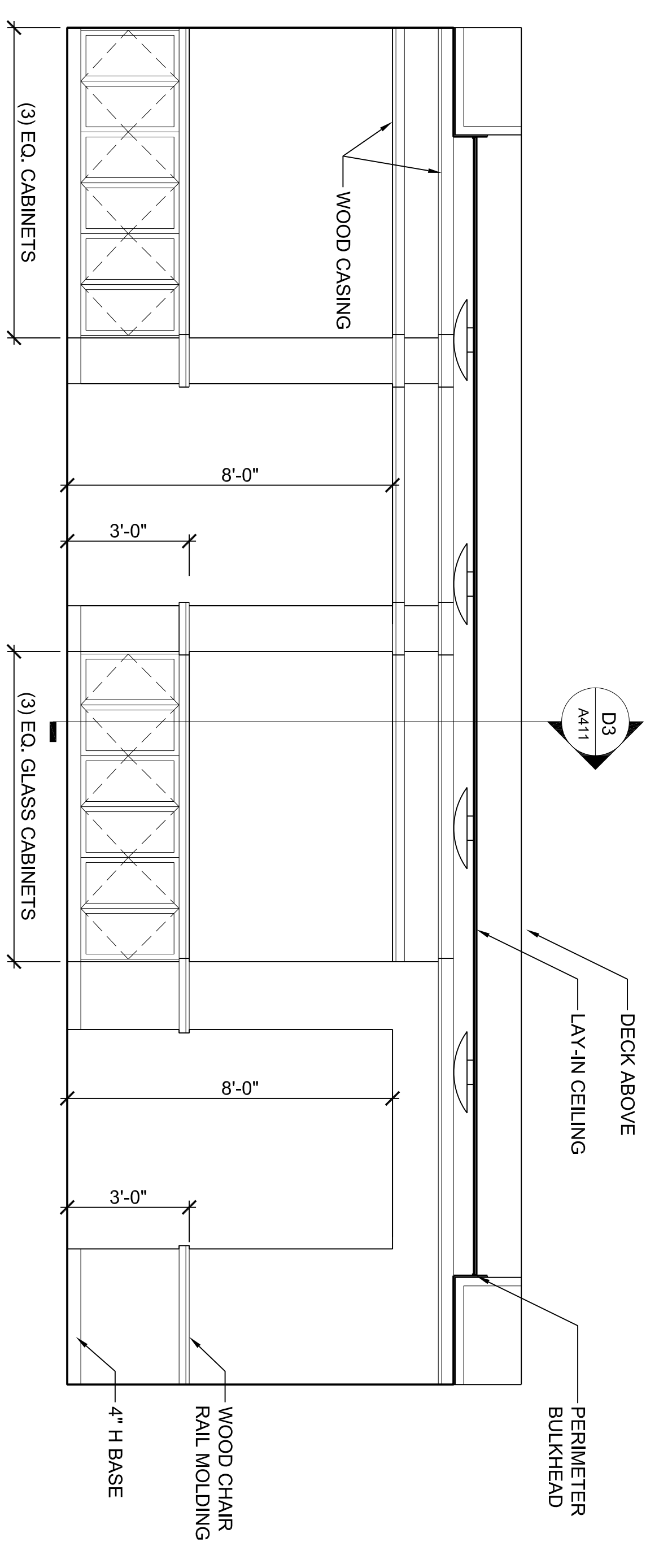
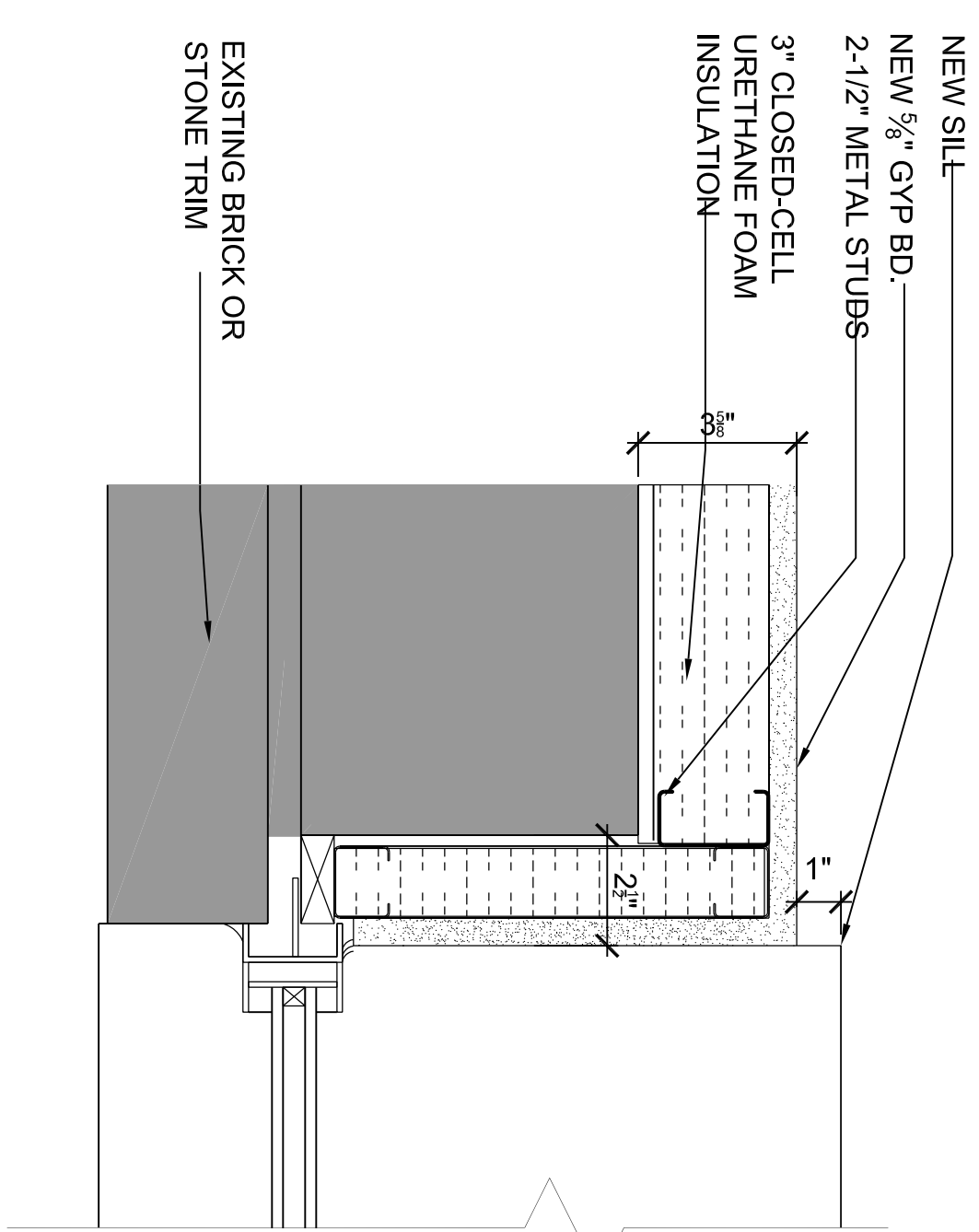


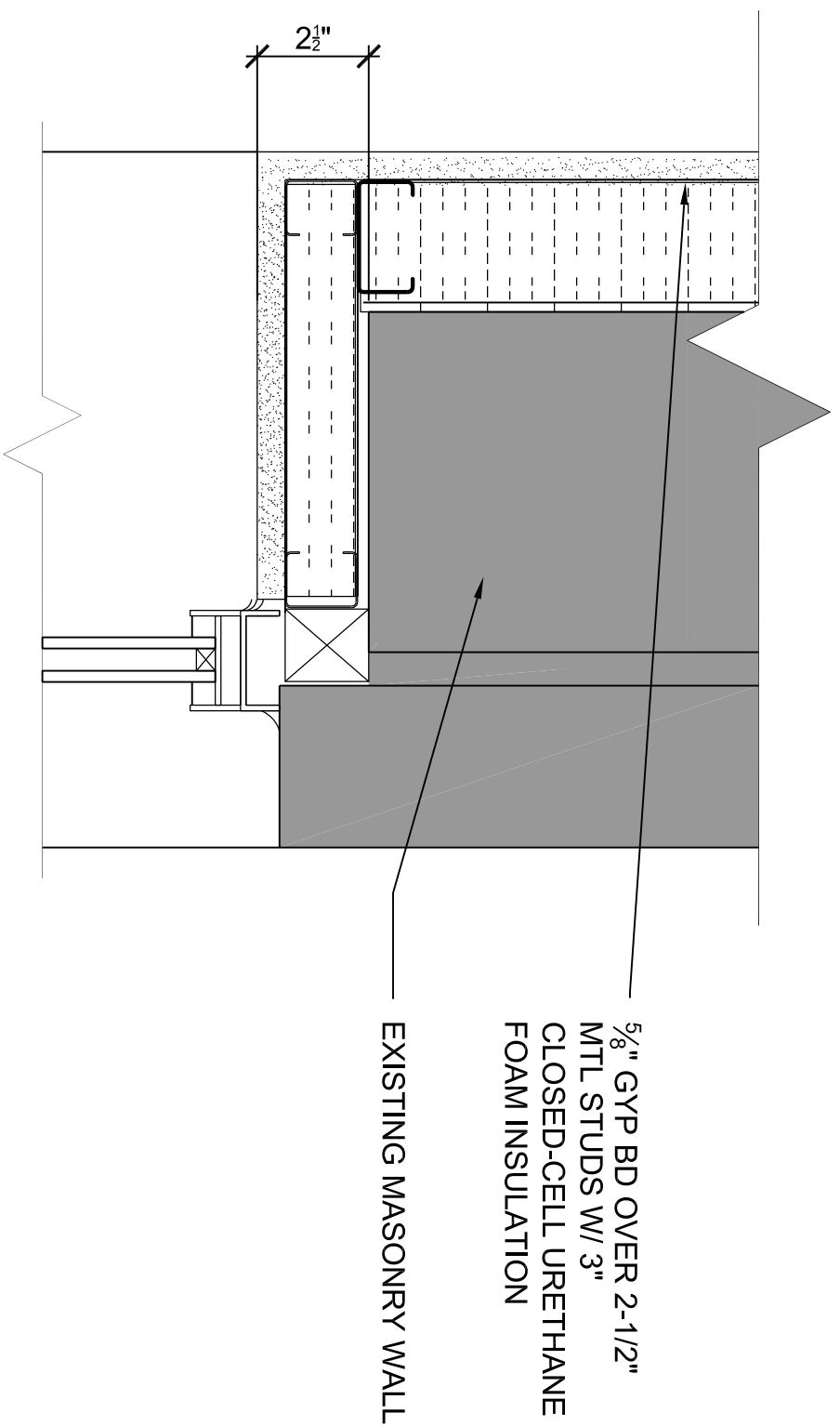
**D3** SECTION AT KNEE WALL  
3/8" = 1'-0"



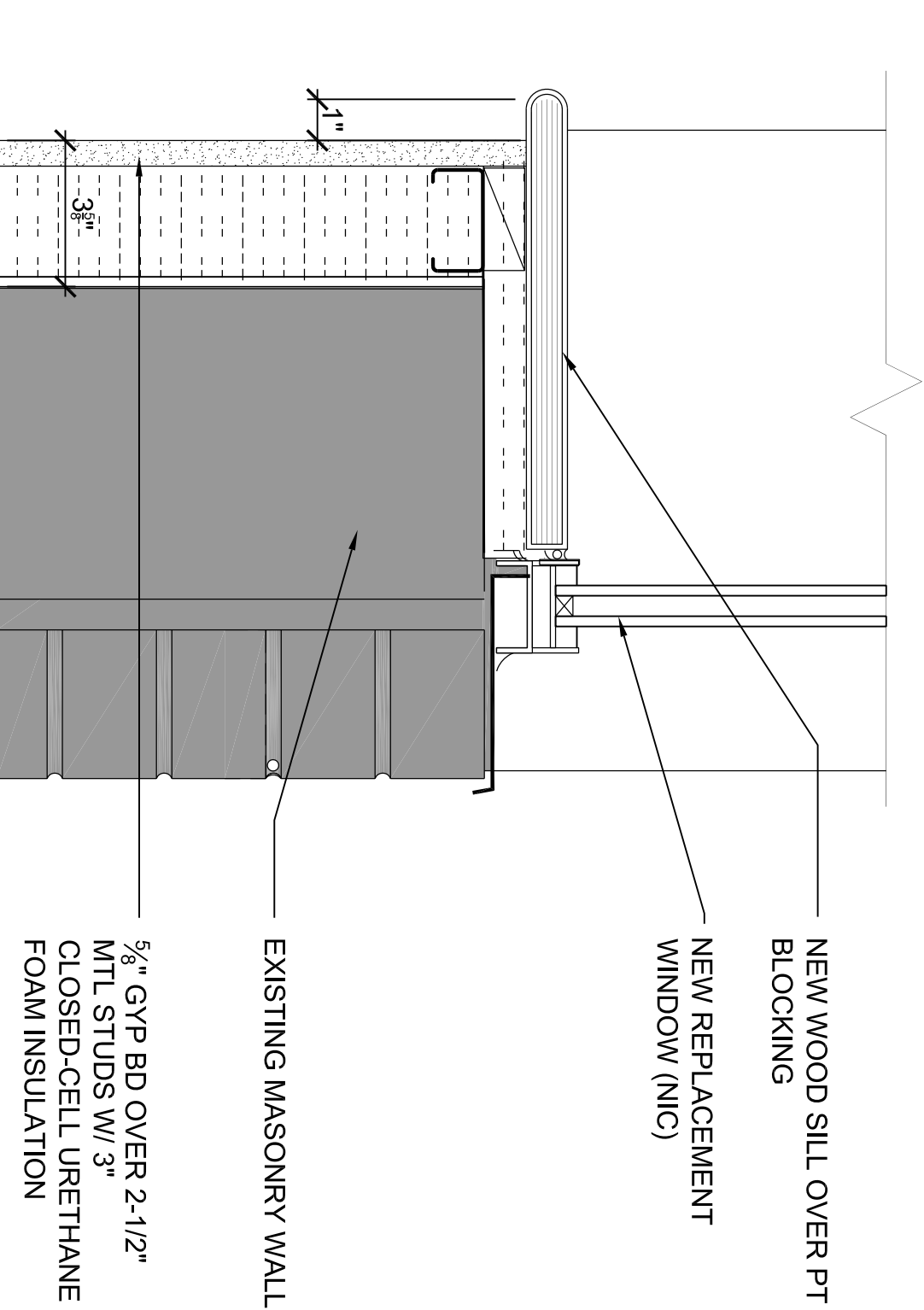
**D4** ELEVATION AT KNEE WALL  
3/8" = 1'-0"



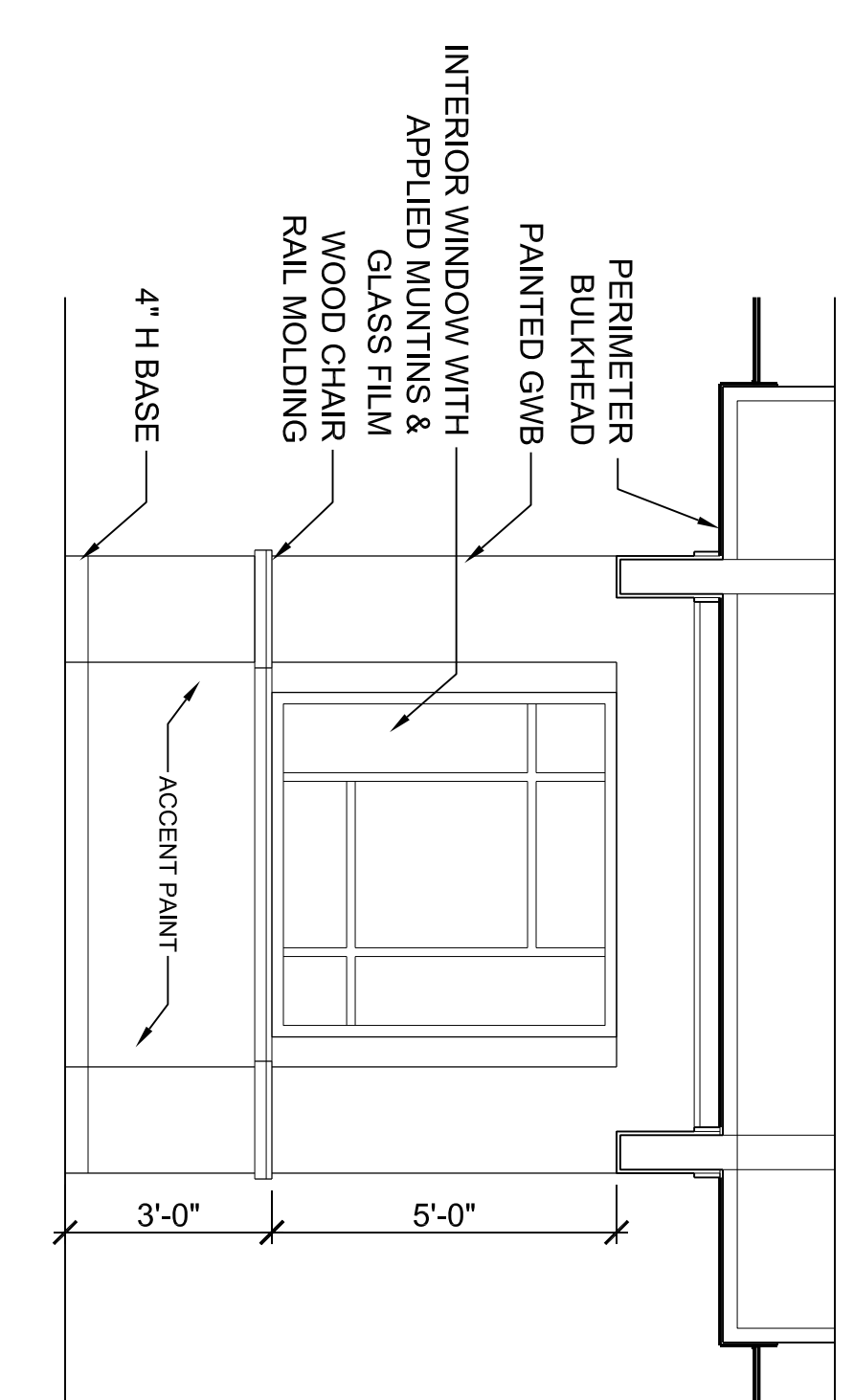
**C1** EXISTING WINDOW JAMB  
3/8" = 1'-0"



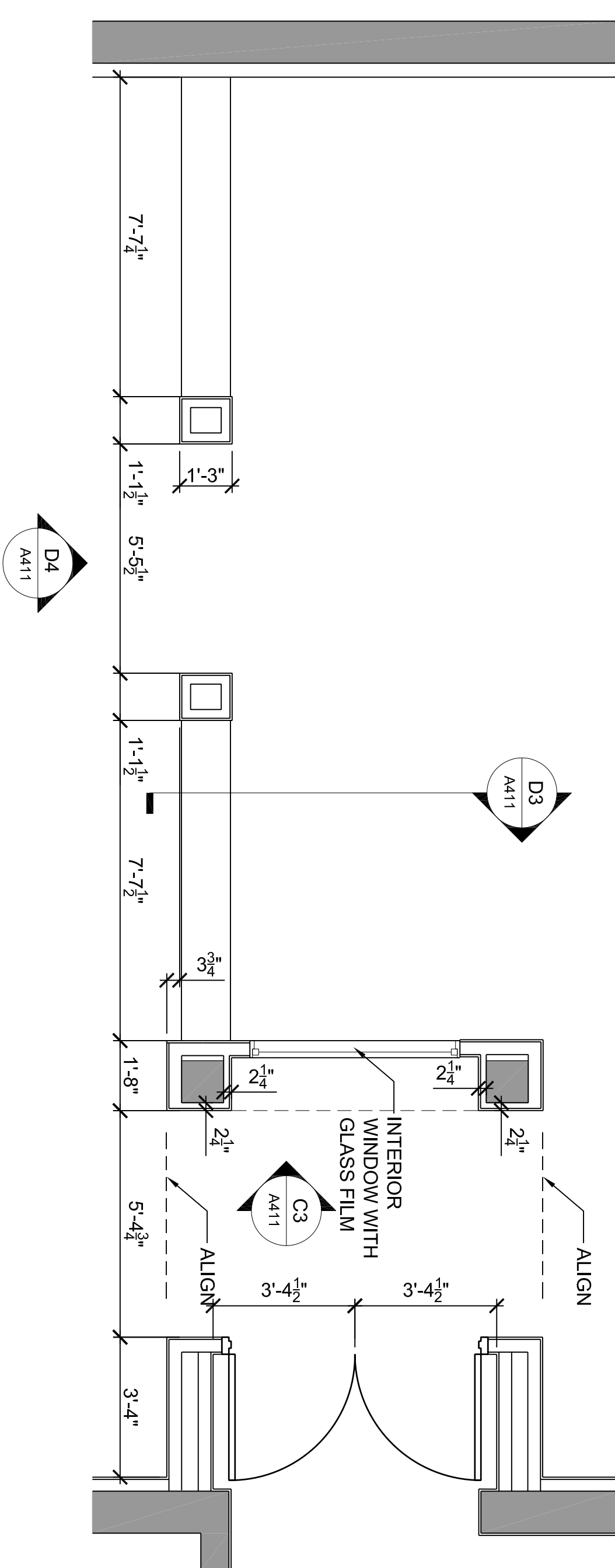
**B1** WINDOW HEAD DETAIL  
3/8" = 1'-0"



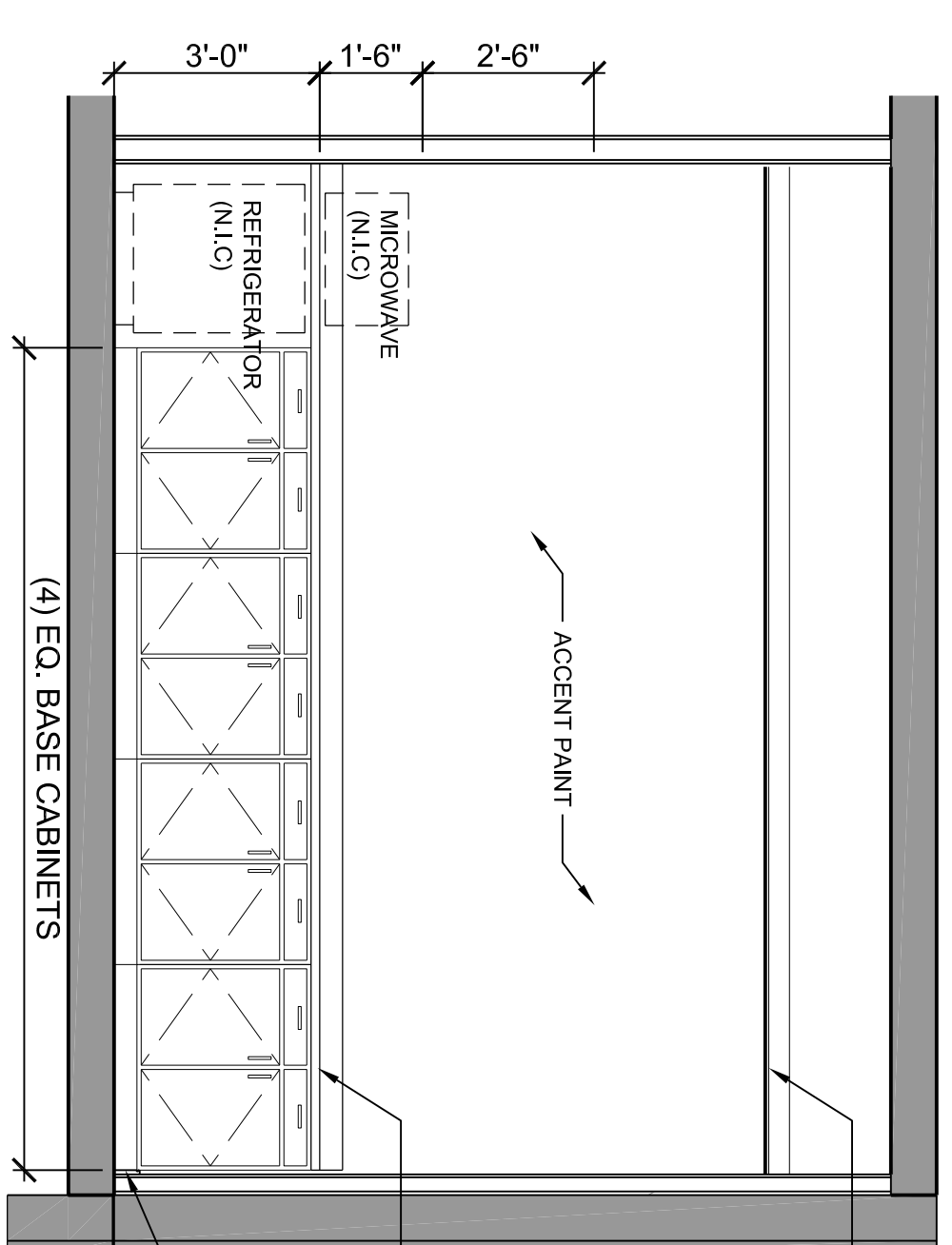
**A1** WINDOW SILL DETAIL  
3/8" = 1'-0"



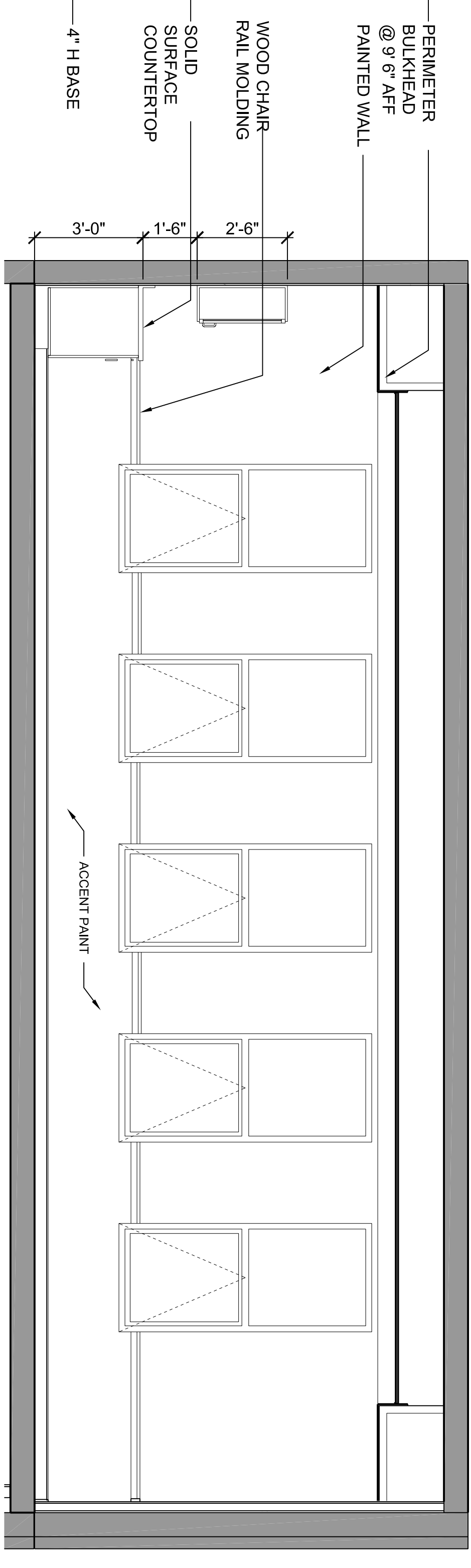
**C3** ELEVATION - INTERIOR WINDOW  
3/8" = 1'-0"



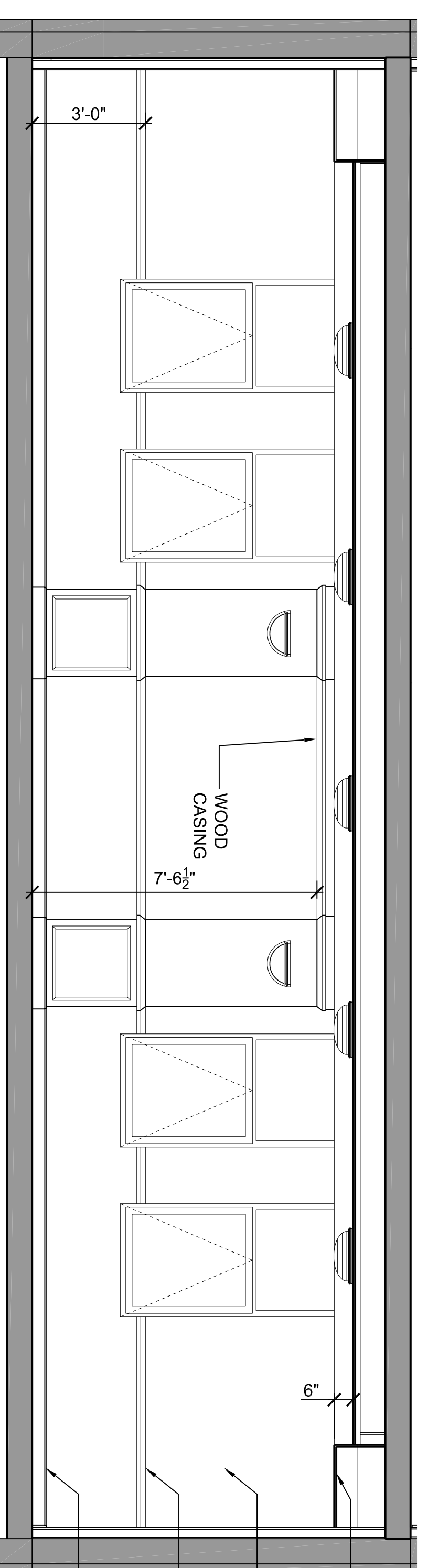
**C4** PLAN DETAIL AT COMMUNITY ROOM  
3/8" = 1'-0"



**B3** CASEWORK ELEVATION AT DINING ROOM  
3/8" = 1'-0"



**B4** CASEWORK ELEVATION AT DINING ROOM  
3/8" = 1'-0"



**A3** CHAPEL WALL ELEVATION  
3/8" = 1'-0"



810 Light Street Baltimore, MD 21230

Professional Certification: I certify that these documents were prepared or approved by me, and that I am a duly licensed architect under the laws of the State of Maryland.

DGS License No: 9473 Expiration Date: 4/7/2015

NO	DATE	DESCRIPTION
1	6-13-13	PERMIT SET
REVISIONS		

NOTRE DAME  
PREP CONVENT  
RENOVATION  
INTERIOR  
ELEVATIONS  
& DETAILS

PROJ. NO.: 1307-00 DWG. NO.  
DRAWN BY: SNW/AR  
DATE: 6-13-13  
**A-411**