

GENERAL PROJECT NOTES

- LOWEST BRANCHES OF ALL SANITARY RISERS SHALL CONNECT SEPARATELY TO MAIN UNLESS OTHERWISE NOTED.
- ALL SANITARY PIPING BELOW SLAB SHALL BE MINIMUM 2".
- REFER TO ARCHITECTURAL DRAWINGS FOR EXACT LOCATIONS OF ALL PLUMBING FIXTURES. DO NOT DIMENSION LOCATIONS FROM THESE DRAWINGS.
- COORDINATE ALL RISER LOCATIONS WITH STRUCTURAL BUILDING COMPONENTS.
- SANITARY PIPING SHALL RUN AT A 2% SLOPE MINIMUM UNLESS NOTED OTHERWISE. COORDINATE INSTALLATION OF PIPING WITH EXISTING SHELL CONDITIONS IN THE CEILING SPACE BELOW.
- CONDENSATE DRAIN PIPING SHALL RUN AT A 2% SLOPE MINIMUM UNLESS NOTED OTHERWISE.
- LOCATIONS OF DRAINS AND CONNECTIONS TO FIXTURES AND EQUIPMENT SHALL BE COORDINATED WITH THE FIXTURE PLAN, EQUIPMENT CUTS AND MECHANICAL/ELECTRICAL PLANS. NO WORK SHALL BE INSTALLED UNTIL THE LOCATIONS HAVE BEEN VERIFIED. WORK SHALL NOT BE INSTALLED UNTIL THE LOCATIONS HAVE BEEN VERIFIED.
- PLUMBING FIXTURES SHALL BE CAULKED TO THE ADJOINING FLOOR OR WALL SURFACE WITH CAULK COLOR AS SELECTED BY THE ARCHITECT.
- COORDINATE GAS PRESSURE AND SERVICE W/ GAS COMPANY.
- WALL CLEANOUTS SHALL BE PROVIDED AT THE BASE OF EACH SANITARY RISER.
- COORDINATE MOTORS AND OTHER ELECTRICAL EQUIPMENT FURNISHED UNDER DIV. 15 WITH DIV. 16. PROVIDE EQUIPMENT COORDINATION TABLE AS A SHOP DRAWING FOR REVIEW. TABLE SHALL INCLUDE BUT NOT BE LIMITED TO THE FOLLOWING INFORMATION:
A) EQUIPMENT POWER REQUIREMENTS INCLUDING AMPS & VOLTAGES.
B) DISCONNECTING MEANS AND OVER CURRENT PROTECTION REQUIREMENTS.
C) CONTROL REQUIREMENTS.
- UNLESS OTHERWISE INDICATED, PIPING SHALL BE SUPPORTED FROM THE STRUCTURE ABOVE. INTERMEDIATE STRUCTURAL SUPPORTS SHALL BE PROVIDED IN AN APPROVED MANNER AS REQUIRED TO MEET MINIMUM SUPPORT SPACING REQUIRED BY THE SPECIFICATIONS.
- COORDINATE THE INSTALLATION OF LIGHTING FIXTURES WITH PIPING, DUCTWORK, AIR DEVICES, SPRINKLERS AND EQUIPMENT BEING INSTALLED IN THE FACILITY SUCH THAT PIPING, DUCTWORK, AIR DEVICES, AND EQUIPMENT DO NOT BLOCK OR IMPEDE LIGHTING.
- PROVIDE HANGERS, ANCHORS, ETC... ON PIPING PER SUPPORT MANUFACTURER'S RECOMMENDATIONS.
- INSTALL PIPING SO THAT VALVING IS ACCESSIBLE. PROVIDE ACCESS PANELS PER SPECIFICATIONS.
- ROUTE DOMESTIC WATER PIPING, SPRINKLER PIPING, HVAC PIPING, GAS PIPING, ETC... IN PIPE CHASES AND FURRED OUT WALLS AND ABOVE CEILINGS. NO PIPING SHALL BE EXPOSED UNLESS APPROVED BY THE ARCHITECT OR OWNER.
- REFER TO ARCHITECTURAL DRAWINGS FOR ROOF, WALL AND CEILING CONSTRUCTION TYPES AND DETAILS. REFER TO STRUCTURAL DRAWINGS FOR STEEL SIZES AND LOCATIONS.
- INSTALL EQUIPMENT, IE: AHU'S, HEATING COILS, WATER HEATERS, PUMPS, WATER SOURCE HEAT PUMPS, FAN COIL UNITS, BOILERS, CHILLER, ETC... IN SUCH A MANNER AS TO PROVIDE ADEQUATE SPACE FOR MAINTENANCE EQUIPMENT ACCESS.
- THE SPRINKLER SYSTEM SHALL BE DESIGNED & COORDINATED WITH DUCTWORK, PIPING, LIGHTING, EQUIPMENT AND ARCHITECTURAL REFLECTED CEILING PLANS. NO CHANGE ORDERS SHALL BE ACCEPTED.
- PROVIDE PIPE SLEEVES AT WALL, FLOOR AND ROOF PENETRATIONS, ALL EXTERIOR ROOF & WALL PIPING PENETRATIONS SHALL BE WEATHER TIGHT, REFER TO DETAILS OF EXTERIOR & INTERIOR WALL PENETRATIONS FOR MORE INFORMATION.
- FIRE STOP ALL PIPING AND DUCT PENETRATIONS THRU FIRE WALLS AND FLOORS, IN ADDITION PROVIDE FIRE DAMPERS WHERE REQUIRED BY CODE IN ALL DUCTS THAT PASS THROUGH FIRE WALLS-REFER TO ARCHITECTURAL DWG.'S FOR FIRE WALL LOCATIONS.

PLUMBING ABBREVIATIONS

ABBREVIATION	DESCRIPTION
AF	ABOVE FINISHED FLOOR
BTU	BRITISH THERMAL UNIT
CAP	CAPACITY
CLG.	COOLING
DB	DRY BULB
DEG	DEGREE
DESIG	DESIGNATION
DFU	DRAINAGE FIXTURE UNIT
DWG.	DRAWING
EAT	ENTERING AIR TEMPERATURE
EWT	ENTERING WATER TEMPERATURE
F	FAHRENHEIT
FT	FEET
GAL	GALLONS
GPM	GALLONS PER MINUTE
FT. OF HD.	FEET OF HEAD
HP	HORSEPOWER
HR	HOUR
HTG	HEATING
I.D.	INSIDE DIAMETER
IN. W.C.	INCHES OF WATER COLUMN
KW	KILOWATTS
LAT	LEAVING AIR TEMPERATURE
LBS	POUNDS
LWT	LEAVING WATER TEMPERATURE
MAX	MAXIMUM
MBH	THOUSAND BTU/HR
MCA	MINIMUM CIRCUIT AMPS
MIN	MINIMUM
MOCP	MAXIMUM OVER CURRENT PROTECTION
NO.	NUMBER
NFCW	NON POTABLE COLD WATER
PD	PRESSURE DROP
RPM	REVOLUTIONS PER MINUTE
ST	STORAGE TANK
SQFT	SQUARE FOOT
TD	TRENCH DRAIN
TYP	TYPICAL
V-PH	VOLTS-PHASE
V-PH-HZ	VOLTS-PHASE-HERTZ
WB	WET BULB
WH	WATER HEATER
WPD	WATER PRESSURE DROP
WSFU	WATER SUPPLY FIXTURE UNIT

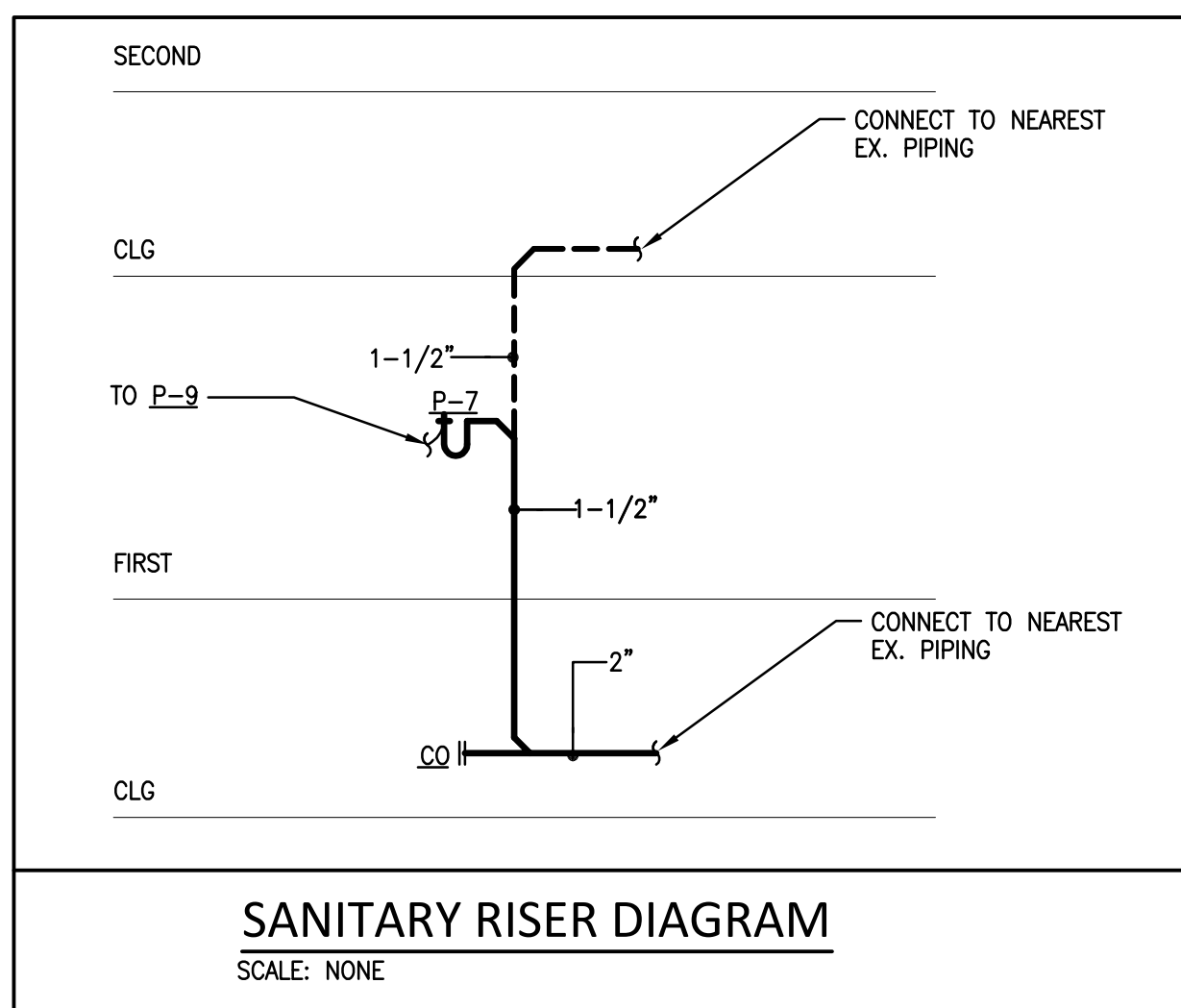
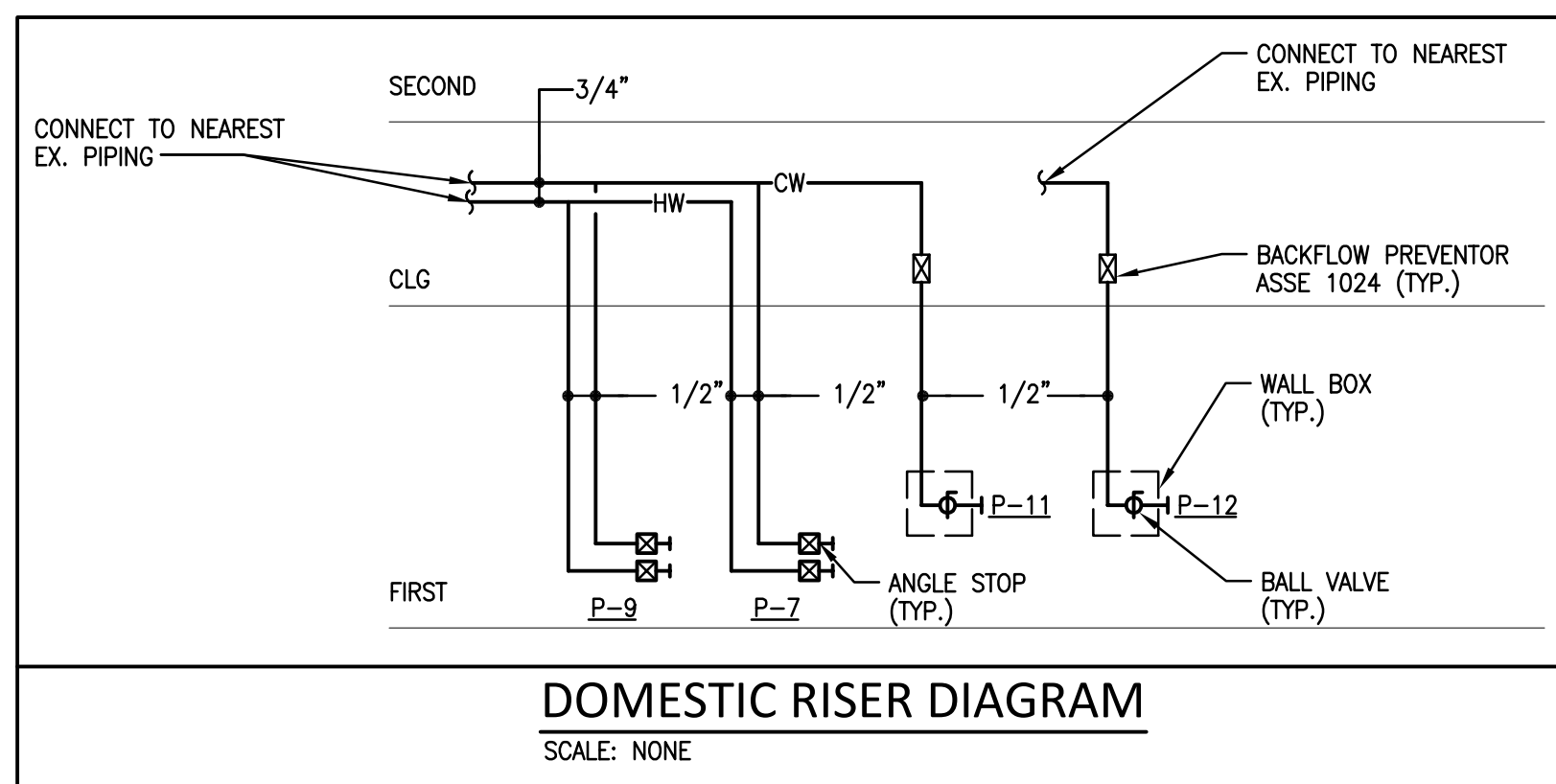
PLUMBING LEGEND

SYMBOL	ABBREVIATION	DESCRIPTION
---	SP,SAN	SANITARY PIPE
---	SW	STORM WATER
---	CD	CONDENSATE DRAIN
---	FD	FOUNDATION DRAIN
---	CO	CLEANOUT
---	V	VENT PIPE
---	CW	COLD WATER
---	HW	HOT WATER
---	HWR	HOT WATER REDIRCULATING
---	G	GAS
---	F	FIRE LINE
---		ANGLE STOP VALVE
---		BALL VALVE
---		CHECK VALVE
---	BWV	BACK WATER VALVE
---		FLOW METER FITTING
---		COMBINATION BALANCING/SHUT-OFF VALVE
---		REDUCED PRESSURE ZONE BACKFLOW PREVENTER
---		PRESSURE REDUCING VALVE
---		RELIEF VALVE
---	MAV	MANUAL AIR VALVE
---	AAV	AUTOMATIC AIR VALVE
---		STRAINER W/VALVE
---		UNION
---	SA	SHOCK ABSORBER
---		GAS PRESSURE REGULATOR
---		FLEXIBLE PIPE CONNECTION
---		PIPE TURNING UP
---		PIPE TURNING DOWN
---		TEE TURNING UP
---		TEE TURNING DOWN
---	WH	WALL HYDRANT
---	HB	HOSE BIBB
---	AD	AREA DRAIN
---	FD	FLOOR DRAIN
---	TD	TRENCH DRAIN
---		DETAIL DESIGNATION

PLUMBING FIXTURE SCHEDULE

DESIG.	DESCRIPTION	SAN	SW	VENT	CW	HW	MANUFACTURER & MODEL	TRIM AND ACCESSORIES	REMARKS	NOTES
P-1A	WATER CLOSET (TANK TYPE) ADA COMPLIANT	3"	-	2"	1"	-	AMERICAN STANDARD TRIUMPH CADET 3 RIGHT HEIGHT ENLONGATED TOILET MODEL 2492.016	SEAT: AMERICAN STANDARD #5284.016 ENLONGED, CLOSED FRONT W/LID	16-1/2" HIGH, ENLONGATED TOILET, 1.6 GPF	
P-3A	LAVATORY (WALL HUNG BOWL) ADA COMPLIANT	1-1/2"	-	1-1/2"	1/2"	1/2"	BOWL: AMERICAN STANDARD LUCERN MODEL 0355.012 W/4" CENTERS FINISH: WHITE	FAUCET: AMERICAN STANDARD MARQUETTE MODEL 7764F W/4" CENTERS, POP-UP DRAIN AND LEVER HANDLES FINISH: POLISHED CHROME	1.5 GPM (MAXIMUM)	
P-7	PANTRY SINK (SINGLE BOWL)	1-1/2"	-	1-1/2"	1/2"	1/2"				
P-9	DISHWASHER	3/4"	-	-	-	3/4"		PROVIDED UNDER ANOTHER DIVISION	PROVIDE WITH AIR GAP FITTING	1
P-10	SERVICE SINK (FLOOR MOUNTED)	3"	-	2"	3/4"	3/4"	SINK: FIAT MODEL M58 2424	FAUCET: FIAT MODEL 830-AA; ALUMINUM BUMPER GUARD, HOSE & BRACKET, MOP HANGER		
P-11	COFFEE MACHINE	-	-	-	1/2"	-		BACKFLOW PREVENTER ASSE 1024		
P-12	ICE MAKER	-	-	-	1/2"	-		BACKFLOW PREVENTER ASSE 1024		

- NOTES:
- COORDINATE LOCATION OF PLUMBING FIXTURES WITH ARCHITECTURAL DRAWINGS.
 - VERIFY ALL FINISHES AND COLORS WITH THE ARCHITECT.
 - PROVIDE FLUSH VALVE WITH OVERRIDE OPTION.
 - COORDINATE SINK CENTER-SET WITH FAUCET CENTER-SET.
 - COORDINATE WITH WALL THICKNESS.



810 Light Street Baltimore, Md 21230

Professional Certification: I certify that these documents were prepared or approved by me, and that I am a duly licensed engineer under the laws of the State of Maryland.
License No: 19989 Expiration Date: 3/14/2015

NO	DATE	DESCRIPTION

REVISIONS

NOTRE DAME PREP CONVENT RENOVATION

PLUMBING LEGEND, NOTES & SCHEDULES

SUBMISSION: PERMIT	
SHEET	TITLE
P001	GENERAL NOTES, ABBREVIATIONS, LEGEND & SCHEDULES
P101	BASEMENT AND FIRST FLOOR PLAN - PLUMBING NEW WORK

PROJ. NO.: 13007-00	DWG NO
DRAWN BY: FDD	P-001
DATE: 08-06-13	