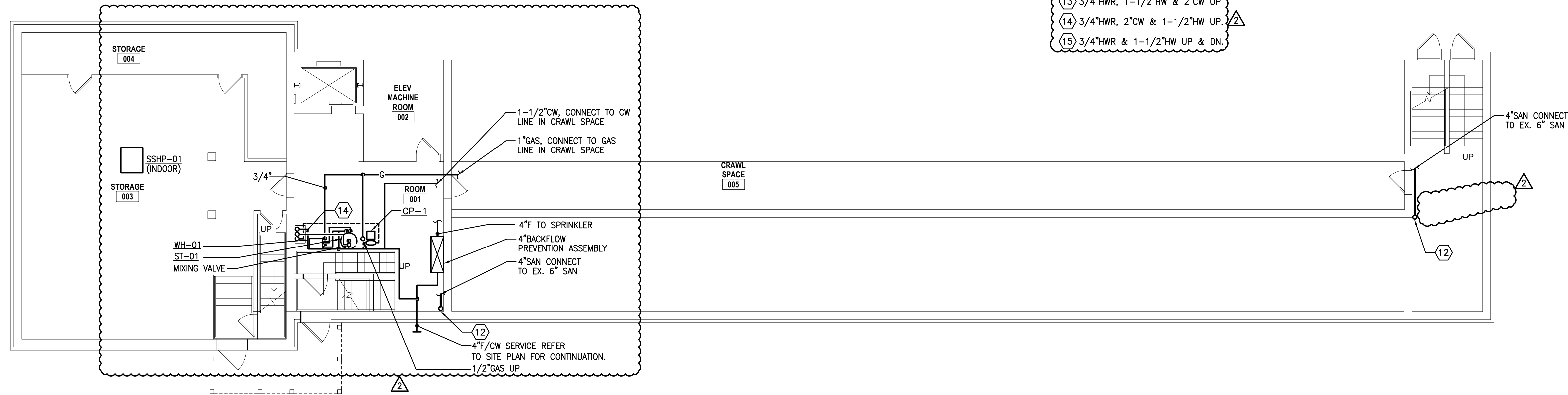


SPECIFIC NOTES (REFER TO P101 WHERE INDICATED):

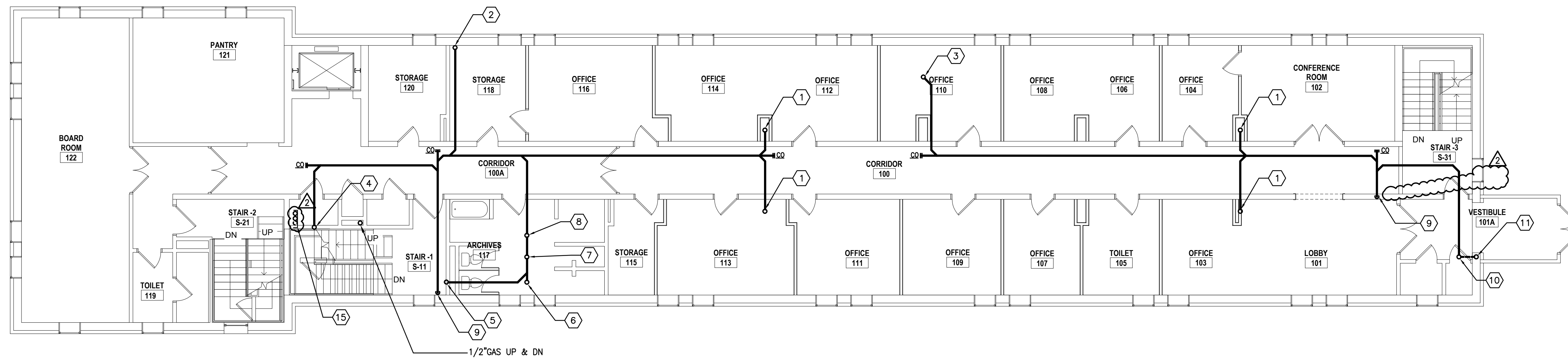
- ① 3" SAN UP.
- ② 1-1/2" SAN UP.
- ③ 1-1/2" SAN UP TO P=7.
- ④ 3" SAN UP TO P=10.
- ⑤ 3" SAN UP TO P=1A.
- ⑥ 1-1/2" SAN UP TO P=3A.
- ⑦ 2" SAN UP TO P=8.
- ⑧ 1-1/2" SAN UP TO P=2B.
- ⑨ 4" SAN DN.
- ⑩ 3" SAN UP TO ED=1.
- ⑪ 2" VENT UP.
- ⑫ 4" SAN UP.
- ⑬ 3/4" HW, 1-1/2" HW & 2" CW UP.
- ⑭ 3/4" HW, 2" CW & 1-1/2" HW UP.
- ⑮ 3/4" HW & 1-1/2" HW UP & DN.



BASEMENT FLOOR PLAN - PLUMBING - NEW WORK

SCALE: 1/8"=1'-0"

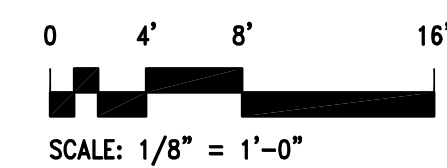
- NOTES:
- FOR PIPING, VALVING & PIPE SIZES NOT SHOWN ON PLAN REFER TO RISER DIAGRAMS ON DWG. P101.
 - PROVIDE ACCESS PANELS IN CEILINGS/WALL TO FACILITATE ACCESS TO ALL VALVING ASSOCIATED WITH CW, HW & HWR PIPING.



FIRST FLOOR PLAN - PLUMBING - NEW WORK

SCALE: 1/8"=1'-0"

- NOTES:
- FOR PIPING, VALVING & PIPE SIZES NOT SHOWN ON PLAN REFER TO RISER DIAGRAMS ON DWG. P101.
 - PROVIDE ACCESS PANELS IN CEILINGS/WALL TO FACILITATE ACCESS TO ALL VALVING ASSOCIATED WITH CW, HW & HWR PIPING.



810 Light Street Baltimore, Maryland 21230

Professional Certification: I certify that these documents were prepared or approved by me, and that I am a duly licensed engineer under the laws of the State of Maryland. License No. 19986 Expiration Date: 3/4/2015.

NO	DATE	DESCRIPTION
2	10/15/13	REVISION #2
1	09/27/13	REVISION #1

REVISIONS

NOTRE DAME PREP CONVENT RENOVATION

815 Hampton Lane
Towson, MD 21286

BASEMENT AND FIRST FLOOR PLAN - PLUMBING NEW WORK

PROJECT NO 13007-00	DWG NO P-101
DRAWN BY FDD	
DATE 03/15/13	