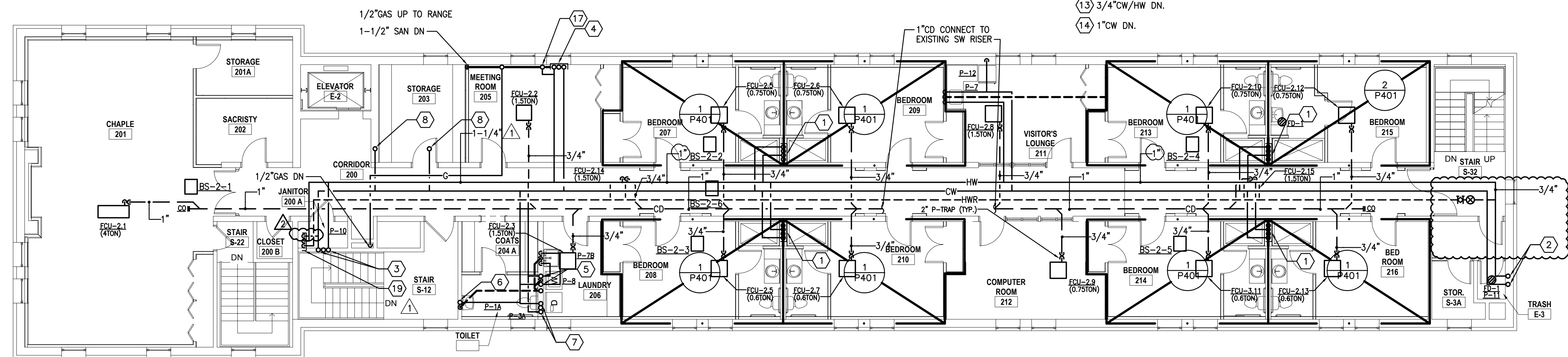


SPECIFIC NOTES (REFER TO P102 WHERE INDICATED):

- ① 1" CW, 3/4" HW, 3" SAN & 2" V UP AND DN.
- ② 3/4" CW/HW UP AND DN TO P-11.
- ③ 3/4" CW/HW UP AND DN TO P-10.
- ④ 1/2" CW/HW & N 1-1/2" SAN UP TO P-6.
- ⑤ 3/4" CW/HW UP AND DN TO P-8.
- ⑥ 1" CW UP AND DN TO P-1A.
- ⑦ 3/4" CW/HW UP AND DN TO P-3A.
- ⑧ 1/2" CW UP TO P-12.
- ⑨ 1" CW, 3/4" HW, 3" SAN & 2" V DN.
- ⑩ 3/4" CW/HW DN.
- ⑪ 3/4" CW/HW DN.
- ⑫ 1/2" CW/HW DN.
- ⑬ 3/4" CW/HW DN.
- ⑭ 1" CW DN.
- ⑮ 3/4" CW/HW DN.
- ⑯ 1/2" CW DN.
- ⑰ 1/2" HW UP TO P-9.
- ⑱ 1/2" HW DN.
- ⑲ 3/4" HW, 2" CW & 1-1/2" HW DN.

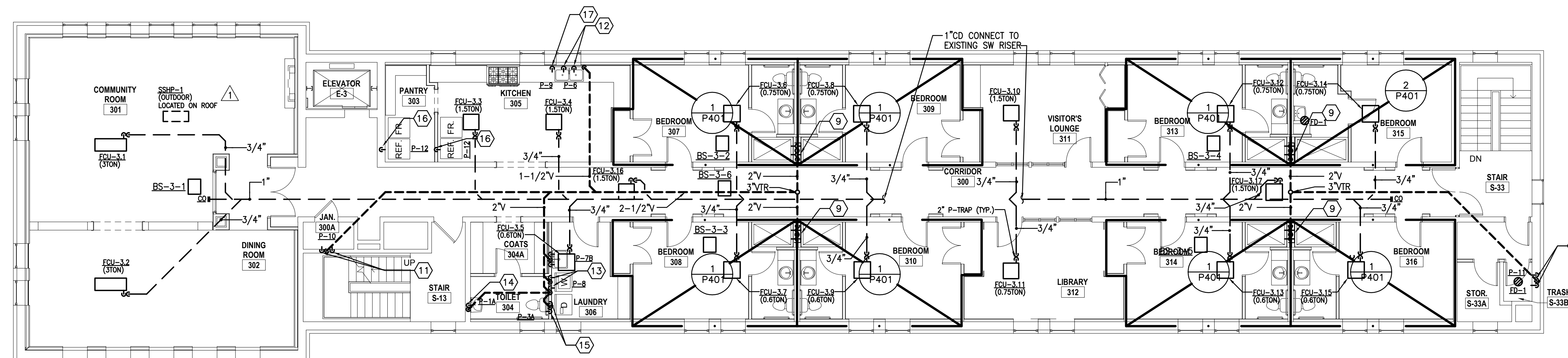


SECOND FLOOR PLAN - PLUMBING - NEW WORK

SCALE: 1/8"=1'-0"

NOTES:

- 1. FOR PIPING, VALVING & PIPE SIZES NOT SHOWN ON PLAN REFER TO RISER DIAGRAMS ON DWG. P-01.
- 2. PROVIDE ACCESS PANELS IN CEILINGS/WALL TO FACILITATE ACCESS TO ALL VALVING ASSOCIATED WITH CW, HW & HWR PIPING.

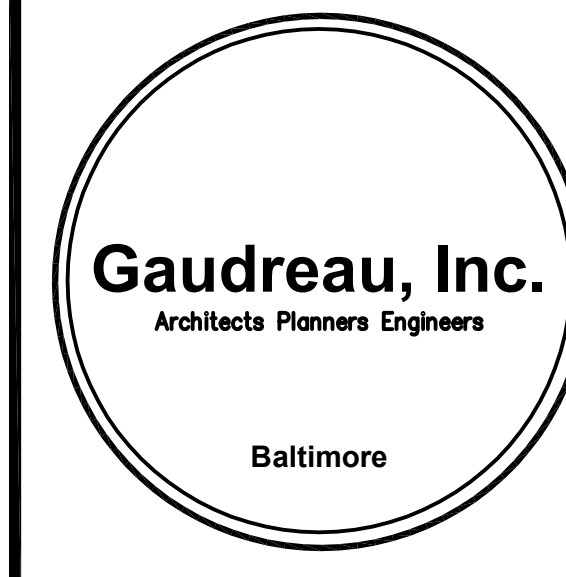
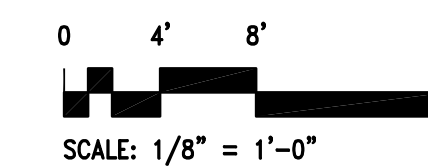


THIRD FLOOR PLAN - PLUMBING - NEW WORK

SCALE: 1/8"=1'-0"

NOTES:

- 1. FOR PIPING, VALVING & PIPE SIZES NOT SHOWN ON PLAN REFER TO RISER DIAGRAMS ON DWG. P-01.
- 2. PROVIDE ACCESS PANELS IN CEILINGS/WALL TO FACILITATE ACCESS TO ALL VALVING ASSOCIATED WITH CW, HW & HWR PIPING.



810 Light Street Baltimore, Maryland 21230

Professional Certification: I certify that these documents were prepared or approved by me, and that I am a duly licensed engineer under the laws of the State of Maryland.
 License No. 19966 Expiration Date: 3/4/2015

NO	DATE	REVISION #	DESCRIPTION
2	10/15/13	REVISION #2	
1	09/27/13	REVISION #1	

REVISIONS

NOTRE DAME PREP CONVENT RENOVATION

815 Hampton Lane
Towson, MD 21286

SECOND AND THIRD FLOOR PLAN - PLUMBING NEW WORK

PROJECT NO 13007-00	DWG NO
DRAWN BY FDD	P-102
DATE 03/15/13	