

CODE ANALYSIS / BLDG DATA

	EXISTING BUILDING	PROPOSED ALTERATIONS
USE GROUP	B	B
TYPE OF CONSTRUCT.	III-B	III-B
NO. OF STORIES	2	2
COVERED MALL	NO	NO
BLDG FULLY SPRINKLERED	YES	YES
FLOOR S.F. THIS SPACE	3200	3200

TOTAL BLDG SF IS APPROX. 15000 SF  
NO CHANGE IN BLDG SF

**CONTRACTOR:**  
YBM CONSTRUCTION INC  
11300 VEIRS MILL RD. #100  
WHEATON, MARYLAND 20902  
PH (301) 929-4300 FAX (301) 946-9739

**ARCHITECT:**  
ANDERSON ARCHITECTS  
C/O YBM INC.  
11300 VEIRS MILL RD. #100  
WHEATON, MARYLAND 20902  
PH (301) 929-4300 FAX (301) 946-9739

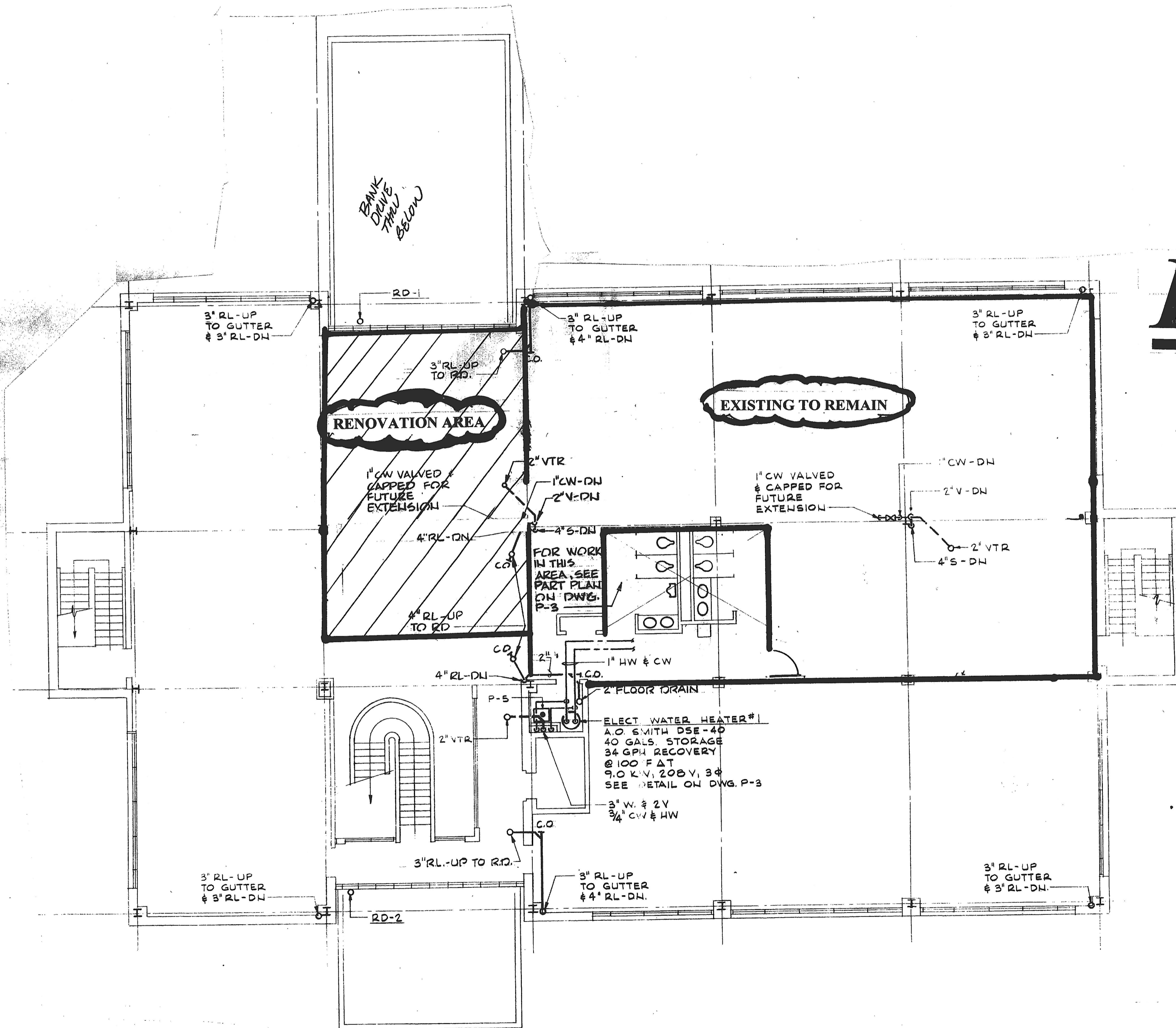
**TENANT:**  
DOBBIN DENTAL SUITE (410) 997-9366

**BUILDING MANAGER:**  
PLATT DEVELOPMENT

**DENTAL EQUIPMENT SUPPLIER:**  
SULLIVAN/SCHEIN (240) 375-1434

INTERIOR SPACE BUILD OUT WORK FOR:

# DOBBIN DENTAL SUITE

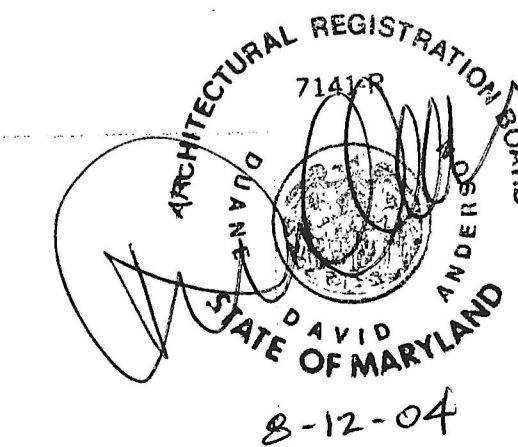


**SECOND FLOOR PLAN**

SCALE: 1/8"=1'-0"

DRAWING INDEX

COVER PAGE/BLDG DATA	1
FLOOR PLAN/CEILING/LIGHTING/MECHANICAL	2
PLUMBING PLAN/DENTAL EQUIPMENT	3
ELECTRICAL PLAN	4



**PROJECT:**  
6395 DOBBIN RD # 210  
COLUMBIA MD 21045

DOBBIN DENTAL		
SCALE: 8/6/2004	APPROVED BY: [Signature]	DRAWN BY: DA
DRAWING NUMBER		1 OF 4