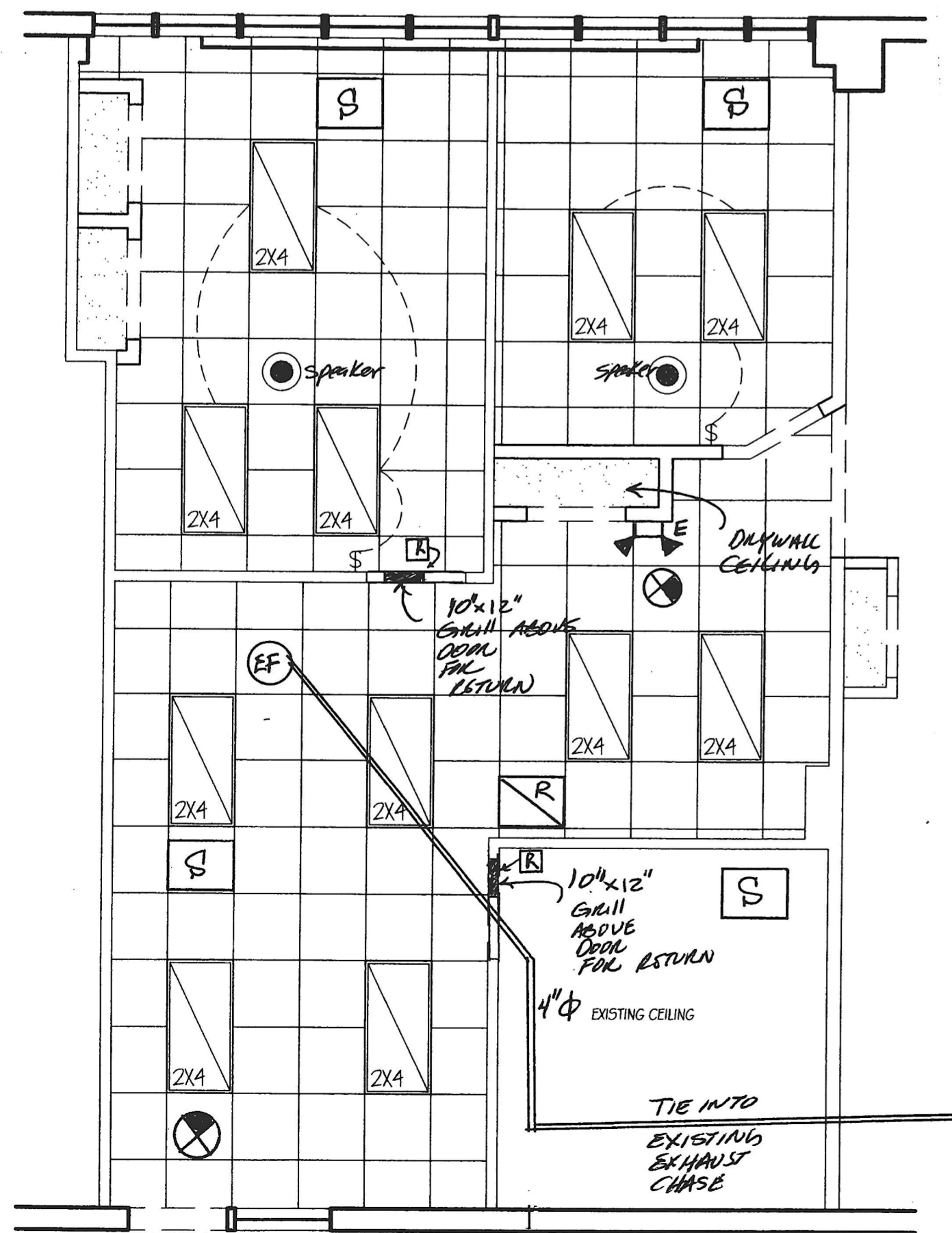


DIMENSION PLAN

**MECHANICAL NOTES:**

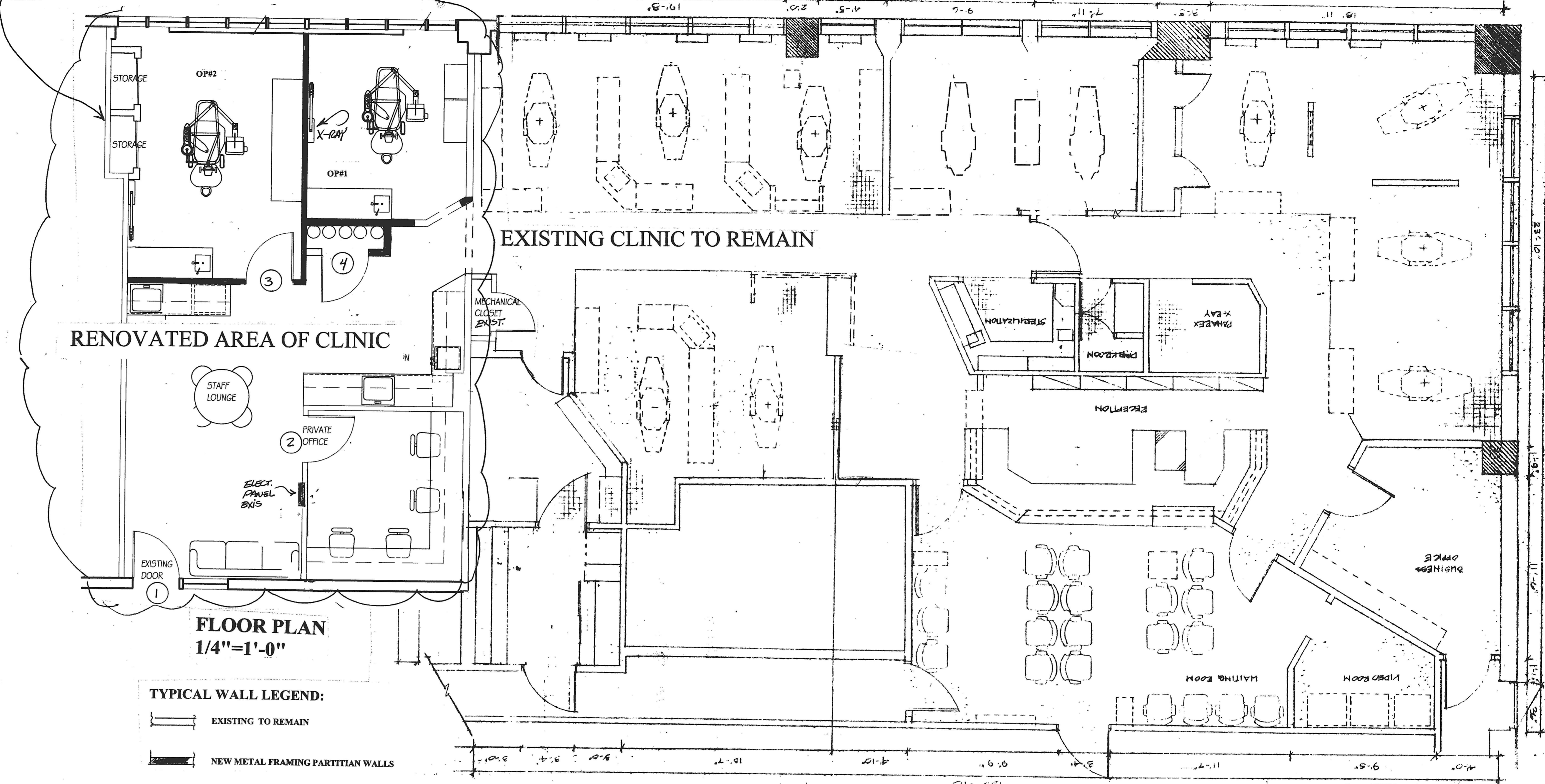
ALL MECHANICAL SYSTEMS/ UNITS, THERMOSTAT, MAIN DUCT WORK, ARE EXISTING AND TO REMAIN



CEILING PLAN/LIGHTING PLAN  
(1/4"=1'-0")

- EXISTING 2X2 SUPPLY DIFFUSERS
- EXISTING 2X2 INTAKE WITH OPEN GRILL (DUCTED BACK TO UNIT)
- 80 CFM EXHAUST FANS WITH 4 INCH DUCT
- INSTALL 10"x12" OPEN GRILL ABOVE DOOR FOR RETURN AIR

THE EXISTING DEMISING WALLS ARE 1 HR RATED, PATCH PENETRATIONS AS RECEIVED TO MEET CODE.

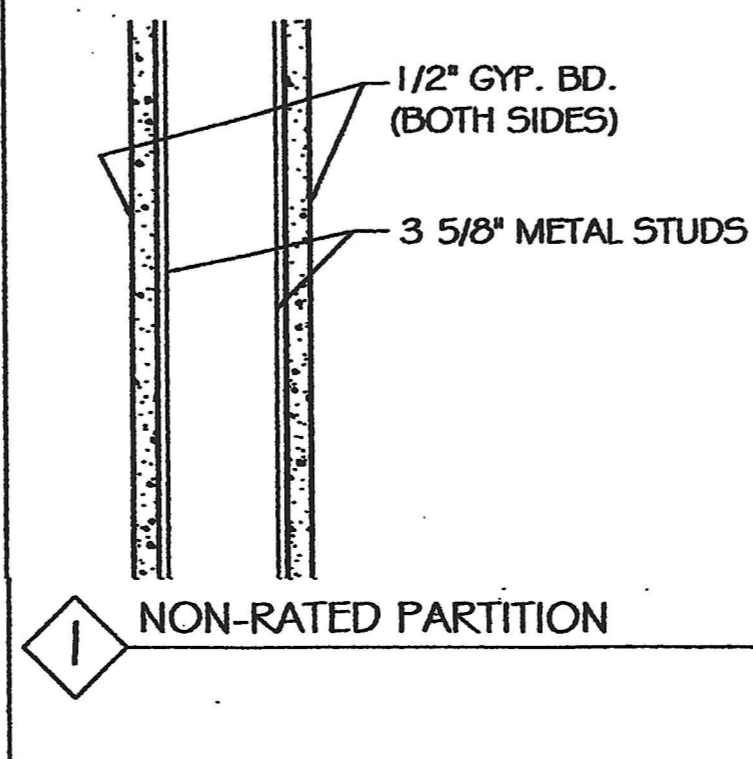


FLOOR PLAN  
1/4"=1'-0"

**TYPICAL WALL LEGEND:**

- EXISTING TO REMAIN
- NEW METAL FRAMING PARTITION WALLS

NON-RATED PARTITIONS TO THE A.F.F. SUSPENDED CEILING. PROVIDE J-MOLD AT TOP EDGE OF GYP. BD.



NON-RATED PARTITION

**DOOR SCHEDULE**  
(ALL DOORS HAVE ADA LEVERED LOCKSETS)

DOOR #	TYPE/SIZE	COMMENTS
1	3068	EXISTING
2	3068	15 LITE
3	3068	SOLID
4	3068	SOLID

3068 SIZE INDICATES A 36" WIDE X 80" HIGH DOOR

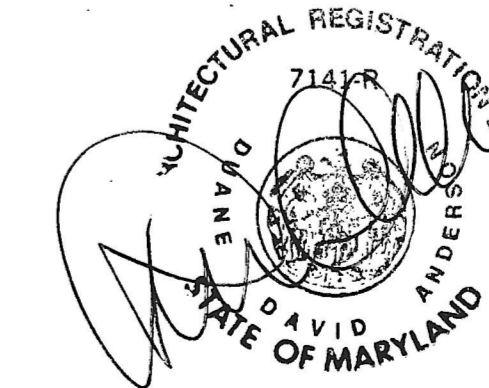
**DOOR HARDWARE SCHEDULE:**

ADA COMPLIANT HARDWARE, LEVERED TYPE  
(PER IBC 2000-106.1.1)

DOORS 1 LOCKABLE (SHALL NOT LOCK FROM EGRESS SIDE-SINGLE ACTION)

REST OF THE DOORS WITH NON-LOCABLE HARDWARE, PASSAGE TYPE

**FLOOR PLAN/CEILING/LIGHTING/MECHANICAL**  
1/4"=1'-0"



DOBBIN DENTAL		
SCALE:	APPROVED BY:	DRAWN BY:
DATE: 8/16/2009		
DRAWING NUMBER		2 OF 4