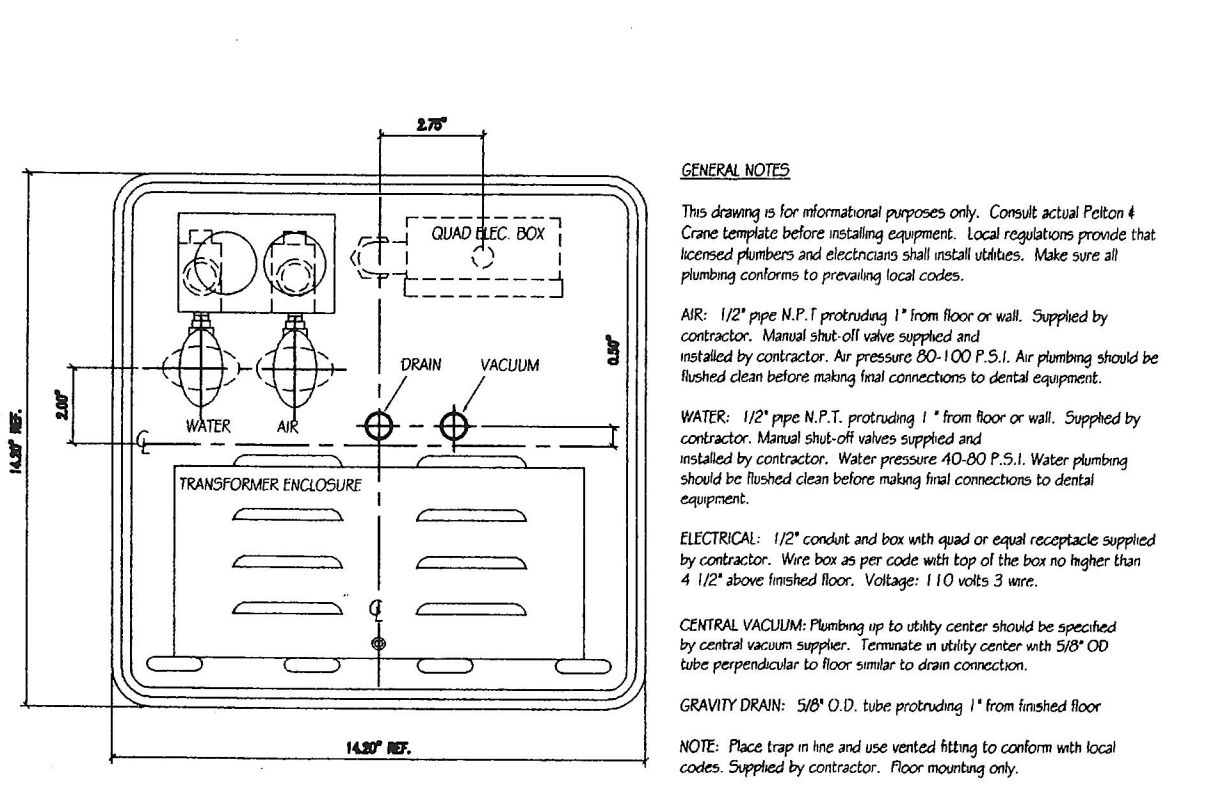


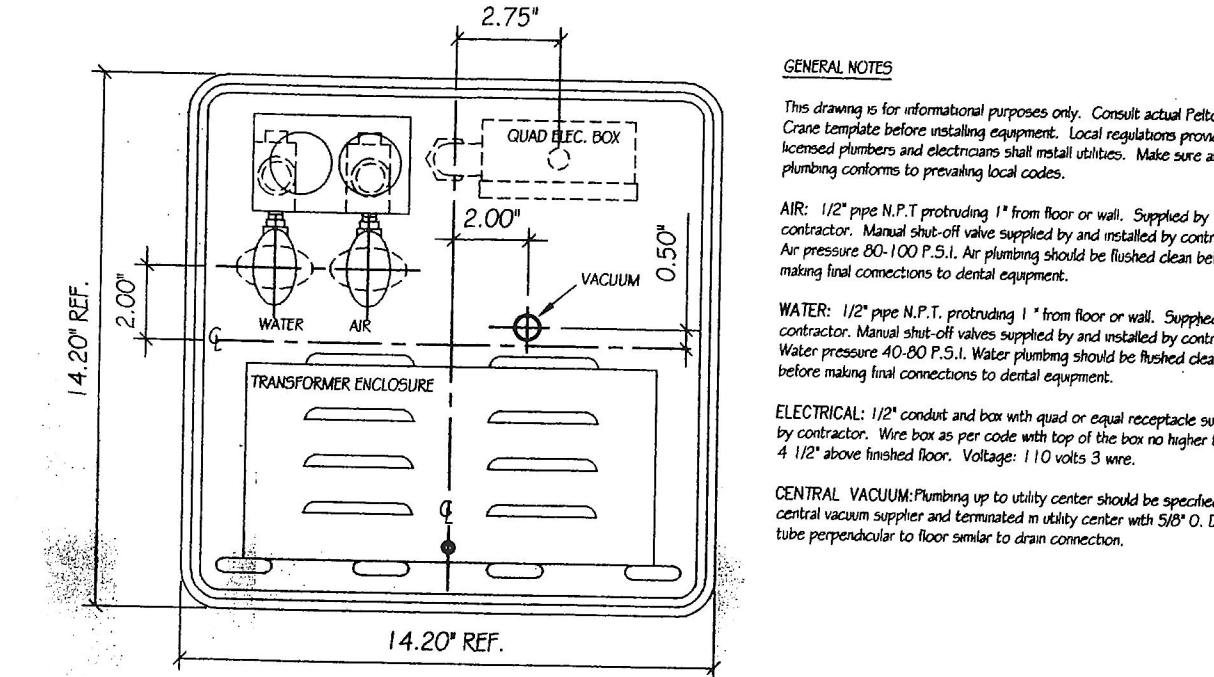
DENTAL EQUIPMENT SPECIFICATION SHEET

NOTES:
[A] = APPLICABLE. ONLY NUMBERS REFERENCED ON THE DENTAL LAYOUT SHEET APPLY.
 ALL EXACT EQUIPMENT LOCATIONS WILL BE SPOTTED ON THE JOB BY A SULLIVAN-SCHEN REPRESENTATIVE.
 THIS SPECIFICATION SHEET IS INTENDED AS A GUIDE FOR TRADESMEN. THE FLOOR PLANS ENCLOSED HEREIN ARE SUGGESTIONS FOR THE PLACEMENT OF DENTAL EQUIPMENT. THEY ARE NOT INTENDED FOR CONSTRUCTION.
 ALL REQUIREMENTS TO BE VERIFIED BY MANUFACTURER'S SPEC SHEETS. PROVIDED BY SULLIVAN-SCHEN DENTAL EQUIPMENT SPECIALIST. MANUFACTURER'S SPECS SUPERSEDE ANY AND ALL INFORMATION CONTAINED HEREIN.

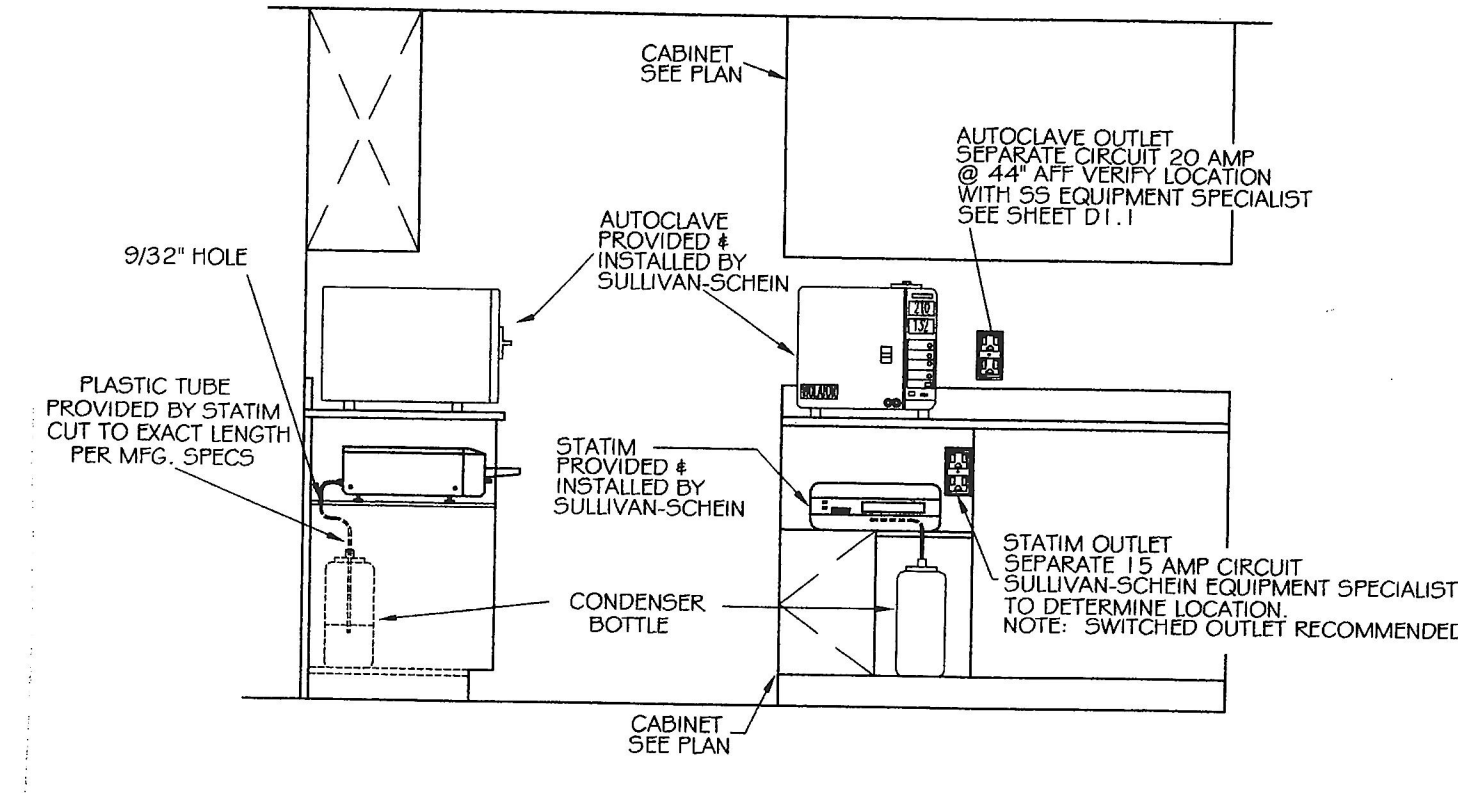
ITEM #	DESCRIPTION	VOLTAGE AMPS	DEDICATED CIRCUIT	LOW VOLTAGE	REMOTE SWITCH	DETAIL NUMBER	SPEC #
1	UTILITY CENTER - See mfg. specs. Back flow prevention required as per local code.	115V 20A				D-1	1
2	UTILITY CENTER - See mfg. specs. Back flow prevention required as per local code.	115V 20A				D-2	2
2A	UTILITY CENTER WITH SELF CONTAINED WATER SYSTEM - See mfg. specs. No cold water required.	115V 20A				D-2A	2A
3	UTILITY CENTER - See mfg. specs. Back flow prevention required as per local code.	115V 20A				D-3	3
3A	UTILITY CENTER WITH SELF CONTAINED WATER SYSTEM - See mfg. specs. No cold water required.	115V 20A				D-3A	3A
4	FOOT CONTROL - 3/4" pipe chase with pull-wire from Dental Chair location to #1, #2 or #3A and/or #3A. Electrician to install.	115V 20A					4
4A	EMPTY CONDENSATE - Pipe chase with pull-wire to be supplied and installed by Electrician. Size to be determined by Sullivan-Schen Equipment Specialist.	115V 9.5A				D-5	5
5	DENTAL CHAIR RECEPTACLE - Supplied and installed by electrician. Location spotted by Sullivan-Schen Equipment Specialist.	115V 20A				D-6	6
6	DENTAL LIGHT (TRACK) - See mfg. specs. Requires mounting bracket in ceiling. See detail.	115V 5A				D-6A	6A
6A	DENTAL LIGHT (CEILING) - See mfg. specs. Requires mounting bracket in ceiling. See detail.	115V 3A					6C
6B	DENTAL LIGHT (CHAIR MOUNTED) - See mfg. specs. May be combined with dental chair receptacle #5.	115V 3A					6C
6C	DENTAL LIGHT (WALL MOUNTED) - See mfg. specs. See typical blocking detail on wall detail sheet.	115V 3A					6C
6D	DENTAL LIGHT (CENTER CABINET MOUNTED) - See mfg. specs. Receives power from cabinet J-box (see spec 11F).	115V 3A					6C
7	NITROUS OXIDE, OXYGEN & VACUUM STATION - See mfg. specs. Supplied by Sullivan-Schen. Installed by Plumber. Silver soldered to type L or K copper lines, 3/8" O.D. Nitrous and 1/2" O.D. Oxygen and Vacuum coming from the manifold system. See detail. Location spotted by Sullivan-Schen Equipment Specialist.					D-7	7
7A	OXYGEN OUTLET - See mfg. specs. Supplied by Sullivan-Schen. Installed by Plumber. Silver soldered to type L or K copper lines coming from the manifold system. See detail. Location spotted by Sullivan-Schen Equipment Specialist.					D-7A	7A
7B	NITROUS OXIDE OUTLET - See mfg. specs. Supplied by Sullivan-Schen. Installed by Plumber. Silver soldered to type L or K copper lines coming from the manifold system. See detail. Location spotted by Sullivan-Schen Equipment Specialist.					D-7B	7B
7C	NITROUS OXIDE FLOW METER - See mfg. specs. Supplied by Sullivan-Schen. Installed by Plumber. Location spotted by Sullivan-Schen Equipment Specialist. See detail.					D-7C	7C
8	RECEIVED X-RAY VIEW BOX - See mfg. specs. Supplied by vendor, installed by Contractor.	115V 1A				D-8	8
9	X-RAY (SELF-CONTAINED) - See mfg. specs. Requires a mechanical ground and mounting support. See wall details.	115V 20A OR 220V 20A					9
9A	X-RAY MASTER CONTROL - See mfg. specs. Connect electrician provided wires to x-ray head. Backing required. See detail.	115V 20A OR 220V 20A				D-9A	9A
9B	X-RAY HEAD ARM AND WALL BRACKET - See mfg. specs. Connect electrician provided wires to master control. Backing required. See wall details.	115V 20A OR 220V 20A					9B
9C	X-RAY REMOTE CONTROL EXPOSURE STATION - See mfg. specs. Connect electrician provided wires to x-ray master control. Backing may be required.						9C
9D	X-RAY REMOTE MOMENTARY CONTACT EXPOSURE BUTTON - Supplied by Sullivan-Schen. Installed by electrician. Connect wires to x-ray master control per mfg. specs.					D-9D	9D
9E	X-RAY REMOTE TIME STATION - Supplied by Sullivan-Schen. See mfg. specs. Connect wires to master control via pipe chase w/ pull-wire.						9E
9F	MOUNTING SUPPORT - See detail (see mfg. type). See typical blocking detail on wall detail sheet.						9F
10	SIGNAL LIGHT COMMUNICATION SYSTEM - See mfg. specs. Supplied by Sullivan-Schen. Installed by Electrician. See detail. Location determined by Doctor and verified by Sullivan-Schen Equipment Specialist.					D-10	10
10B	POWER OUTLET - For signal system. Location to be determined by Doctor and verified by Sullivan-Schen Equipment Specialist.	115V 15A					10B
11	MODULAR SINKS & FAUCETS - Supplied by Sullivan-Schen. Installed by Plumber. Air may be required - see manufacturer's template.						11
11A	STANDARD LAB SINKS & FAUCETS - Supplied and installed by plumber. (Elkay OR 25x21 w/ Chicago 786 Faucet).						11A
11B	STANDARD LAB SINKS & FAUCETS - Supplied and installed by plumber. (Elkay OR 25x21 w/ Chicago 786 Faucet).						11B
11C	STANDARD STERILE SINKS & FAUCETS - Supplied and installed by plumber. (Elkay OR 25x21 w/ Delta 2474 LHF Faucet).						11C
11D	STANDARD PHOTO CLOSET SINKS & FAUCETS - Supplied and installed by plumber. (Elkay OR 25x21 w/ Delta 2474 LHF or Chicago 200-026A-E3-317).						11D
11E	EYE WASH STATION - Supplied by Sullivan-Schen and installed by Plumber, per doctor's location.						11E
11F	CENTER CABINET - Supplied by Sullivan-Schen. Requires loop vent, air, water, drain, and electrical connections. See template.	115V					11F
12	FOOT PEDAL SINK CONTROL - From #12 to #11. Supplied by Sullivan-Schen and installed by Plumber.						12
12A	FOOT PEDAL SINK CONTROL - From #12A to #11A. Supplied and installed by Plumber.						12A
12B	MASTER FAUCET CONTROL - From #12B to sink indicated on plan. Supplied by Sullivan-Schen and installed by Plumber. See detail drawing.					D-12B	12B
13	AIR VALVE - Supplied and installed by Plumber. 1/2" FPT coating. See detail.						13
13A	GAS VALVE - Supplied and installed by Plumber. 3/8" FPT coating. See detail.						13A
13B	AIR AT STERILIZATION - Supplied and installed by plumber. 1/2" air line with quick disconnect. See detail.						13B
14	STERILIZER (AUTO-CLAVE) - See mfg. specs. Switched outlet recommended. See detail, especially if mounted inside a cabinet.	115V 15A 60Hz				D-14	14
14A	STERILIZER (AUTO-CLAVE) - See mfg. specs. See detail.	115V 20A 50/60 Hz				D-14A	14A
23	EXHAUST FAN - See mfg. specs. 1/2" copper tubing. Sullivan-Schen to supply back-booster if required. Fresh-air intake vent supplied by contractor. See detail.	115V 15A					23
24	AIR COMPRESSOR - See mfg. specs. 1/2" copper tubing. Sullivan-Schen to supply back-booster if required. Fresh-air intake vent supplied by contractor. See detail.	See mfg. specs.				D-24	24
25	VACUUM SYSTEM (NET) - See mfg. specs. 1-1/2" main trunk lines. Use PVC schedule 40 pipes where permitted by code. Sullivan-Schen to supply custom separator if req'd. Outside vent req'd. Back flow prevention req'd as per local code. Sullivan-Schen to supply back-booster if req'd. See detail.	1 - 115V				D-25	25
26	VACUUM SYSTEM (NET) - See mfg. specs. 1-1/2" main trunk lines. Use PVC schedule 40 pipes where permitted by code. Sullivan-Schen to supply custom separator if req'd. Outside vent req'd. Back flow prevention req'd as per local code. Sullivan-Schen to supply back-booster if req'd. See detail.	1 - 220V				D-26A	26A
33	NITROUS OXIDE & OXYGEN MANIFOLD SYSTEM - See mfg. specs. Supplied by Sullivan-Schen. Installed by Plumber. Requires L or K copper lines, silver soldered to trunk lines, ranging to each operatory. Pressure tested with Dry Nitrogen to 150 PSI for 24 hours by Plumber. FOLLOW NFPA CODES. See detail.	115V 1.5A				D-33	33



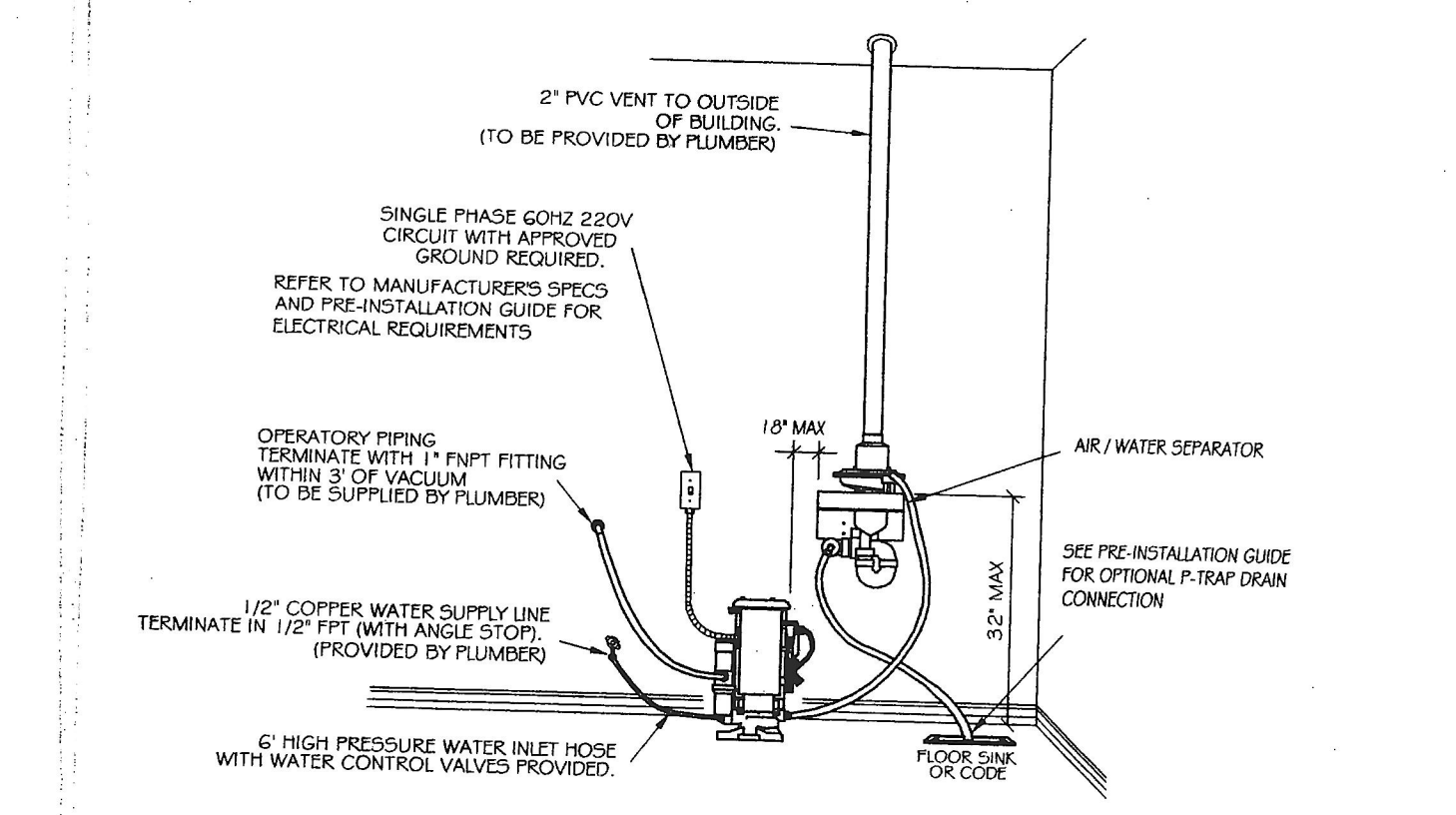
D-1 PELTON UTILITY J- BOX W/ DRAIN
NOT TO SCALE



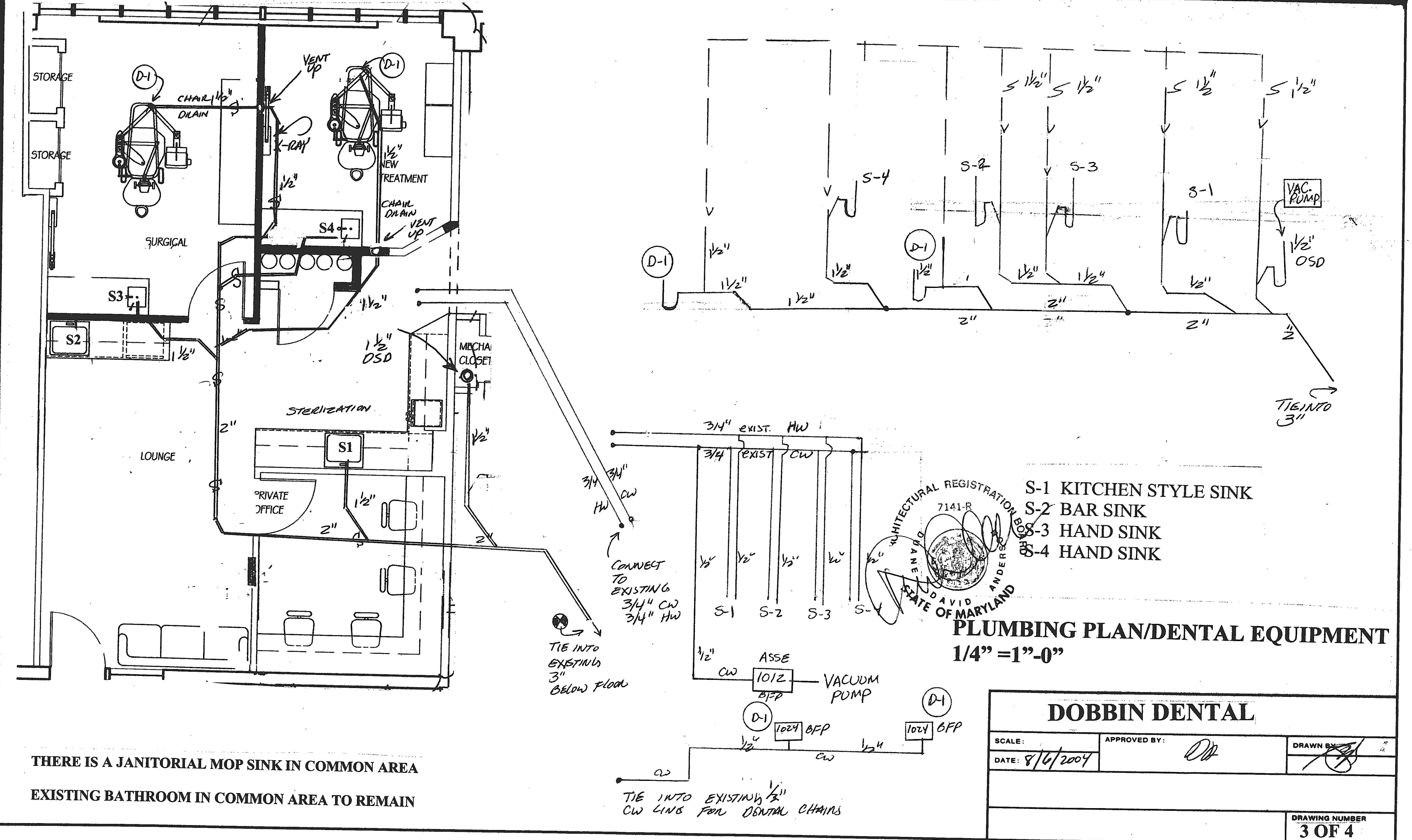
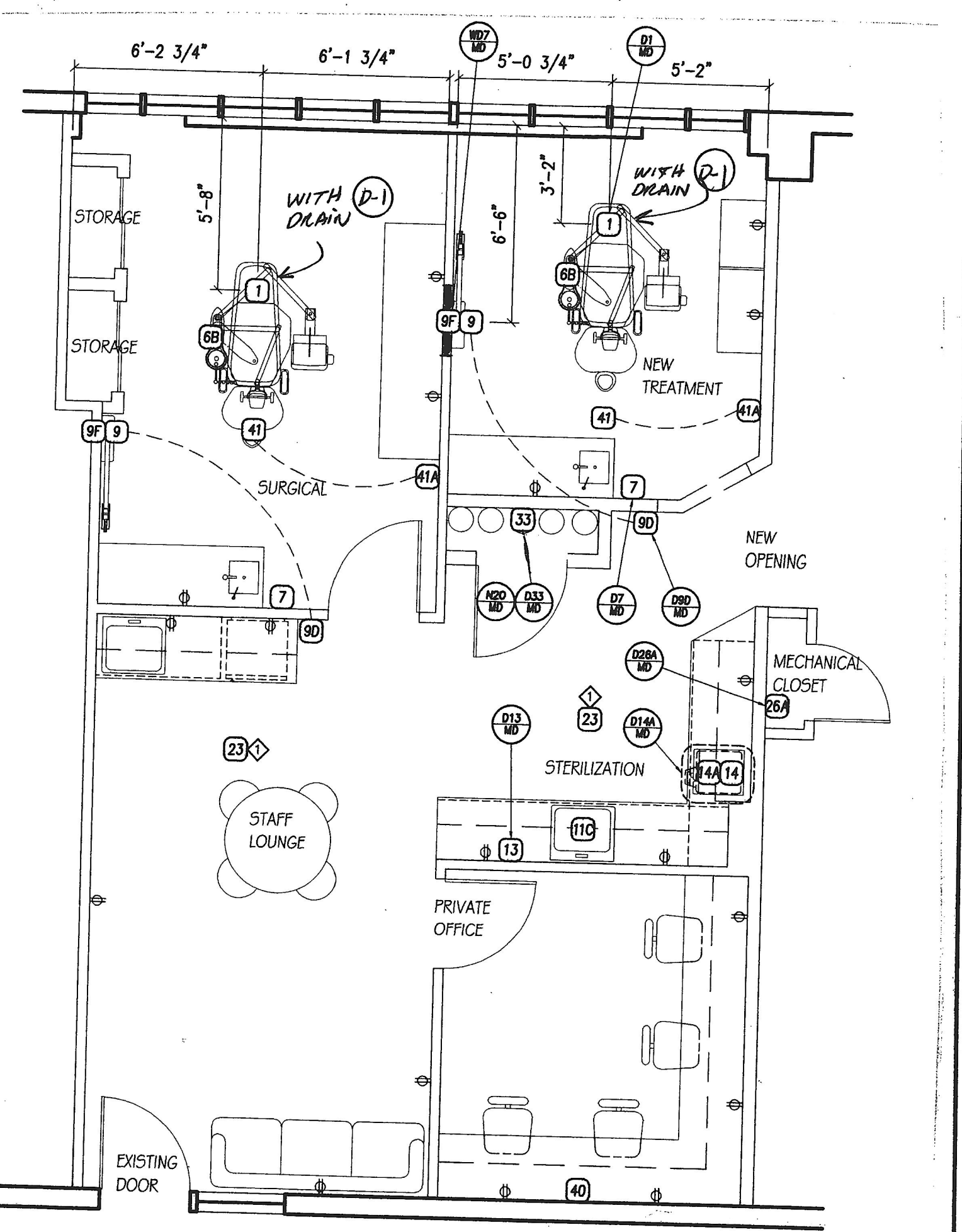
D-3 PELTON UTILITY J- BOX
NOT TO SCALE



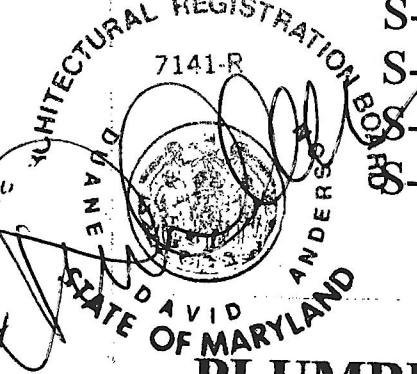
D-14A AUTOCLAVE & STATIM OUTLETS
NOT TO SCALE



D-26A VACSTAR 20 / 40 - SINGLE 220V
NOT TO SCALE



THERE IS A JANITORIAL MOP SINK IN COMMON AREA
 EXISTING BATHROOM IN COMMON AREA TO REMAIN



S-1 KITCHEN STYLE SINK
 S-2 BAR SINK
 S-3 HAND SINK
 S-4 HAND SINK
PLUMBING PLAN/DENTAL EQUIPMENT
 1/4" = 1'-0"

DOBBIN DENTAL	
SCALE:	APPROVED BY: <i>[Signature]</i>
DATE: 8/16/2007	DRAWN BY: <i>[Signature]</i>
MECHANICAL NUMBER 3 OF 4	