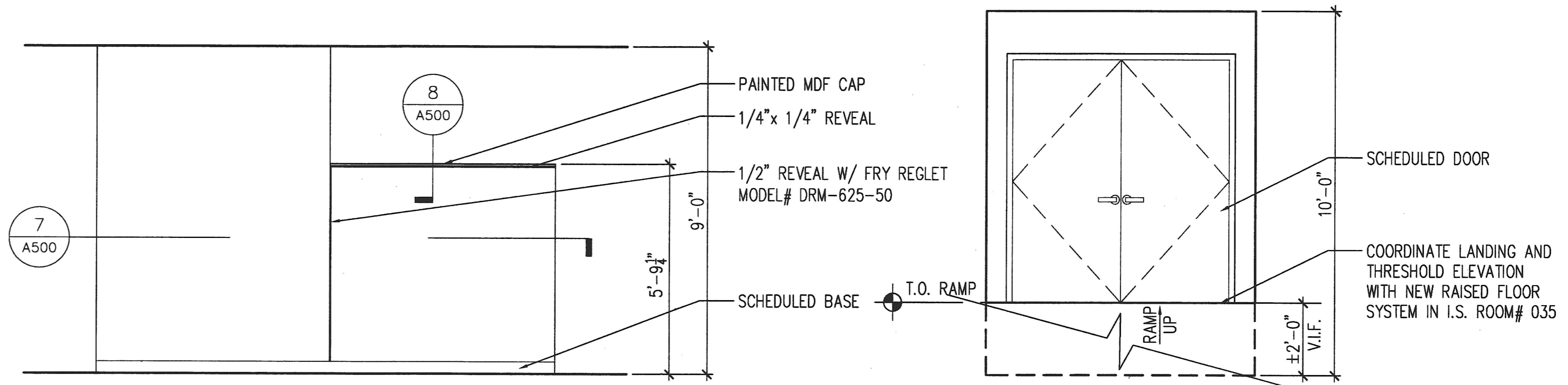


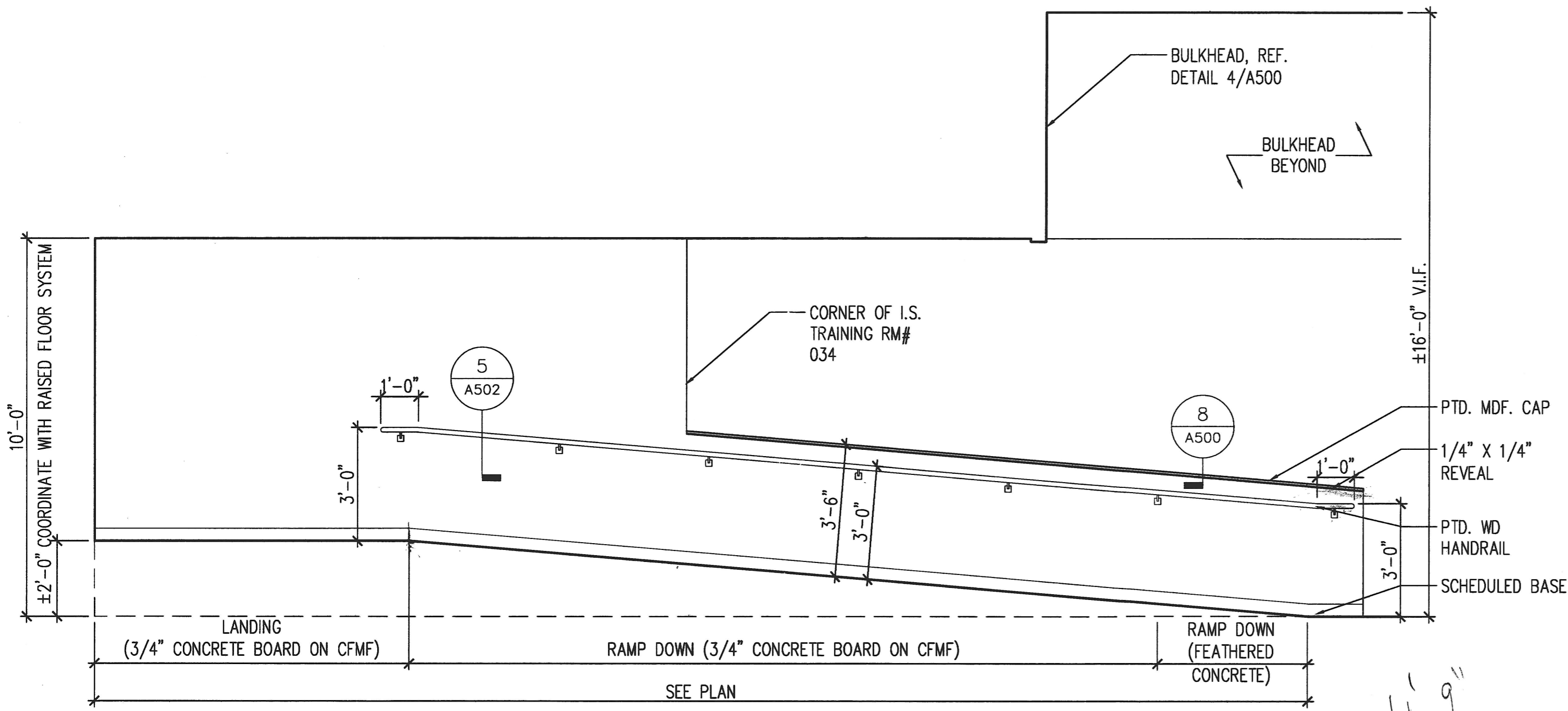
1 INTERIOR ELEVATION - 'TETRA' WINDOW
 3/8" = 1'-0"

2 INTERIOR ELEVATION - FEATURE PARTITION
 3/8" = 1'-0"

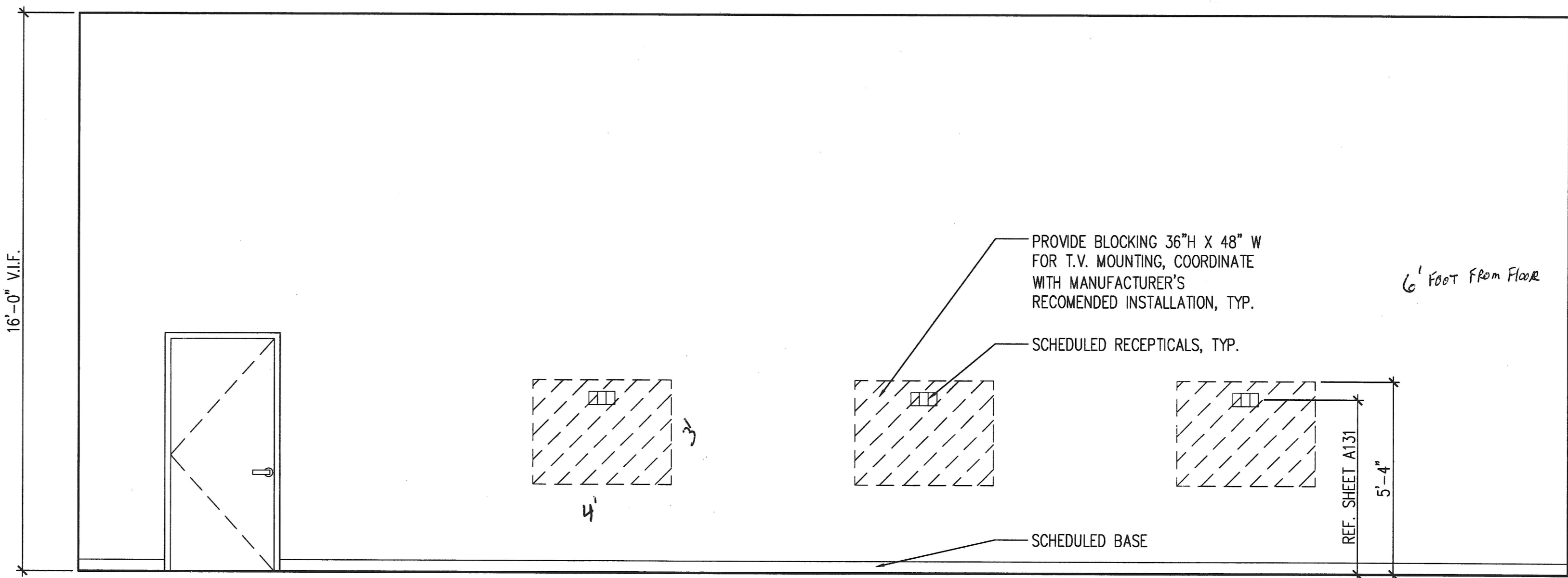


3 INTERIOR ELEVATION - FEATURE PARTITION
 3/8" = 1'-0"

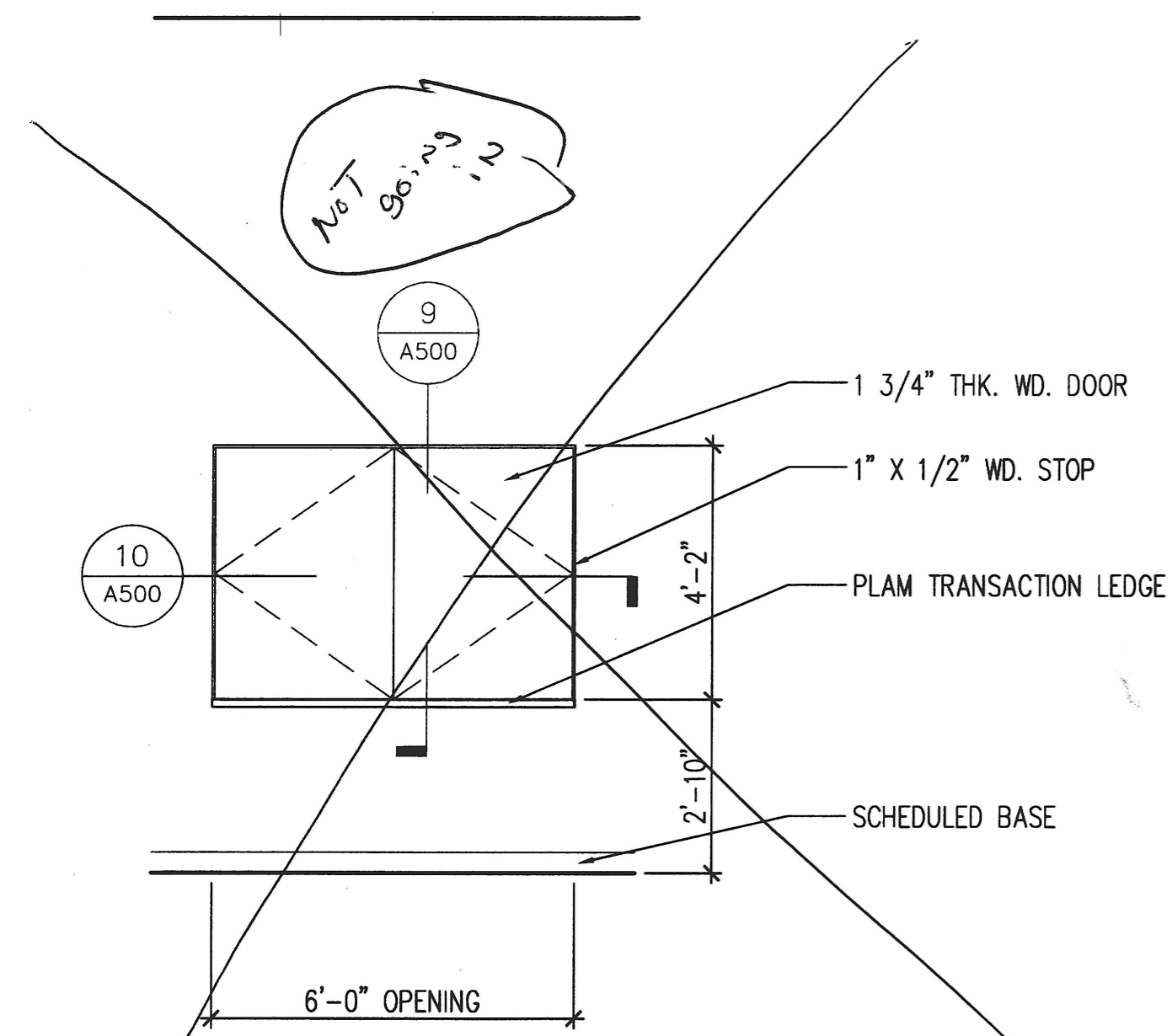
4 INTERIOR ELEVATION - I.S. RAMP
 3/8" = 1'-0"



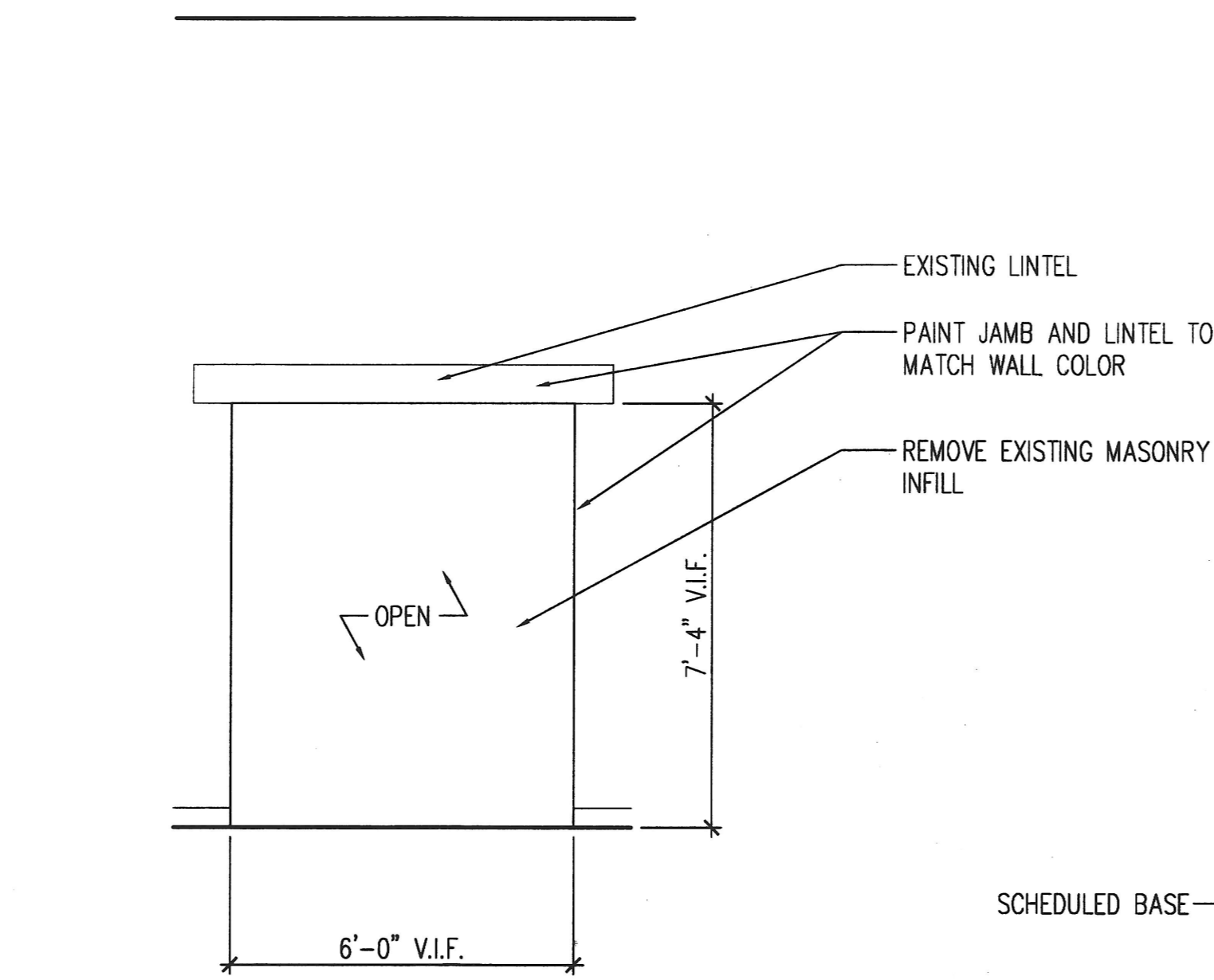
5 INTERIOR ELEVATION - I.S. RAMP
 3/8" = 1'-0"



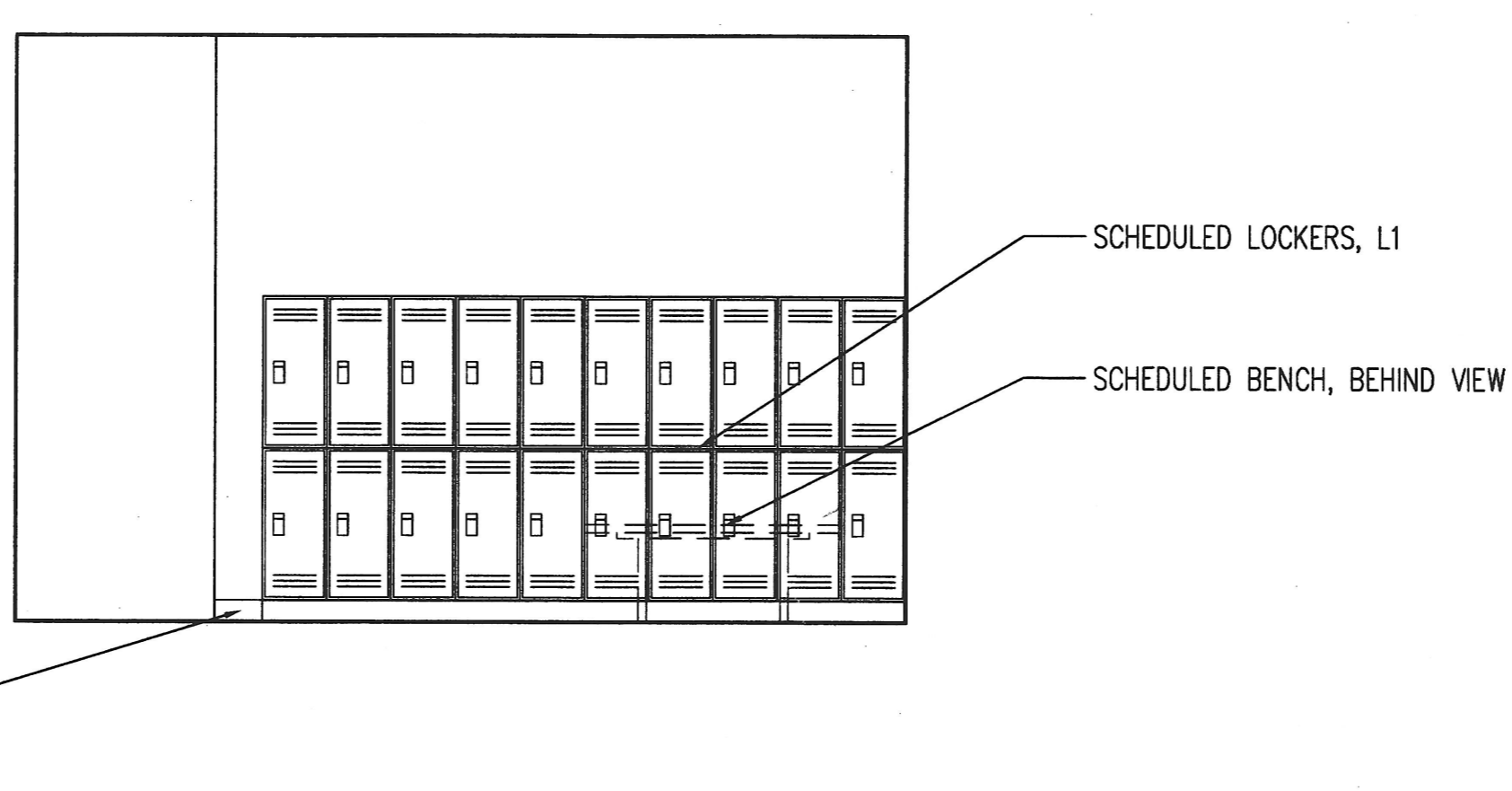
6 INTERIOR ELEVATION - MULTI-PURPOSE ROOM
 3/8" = 1'-0"



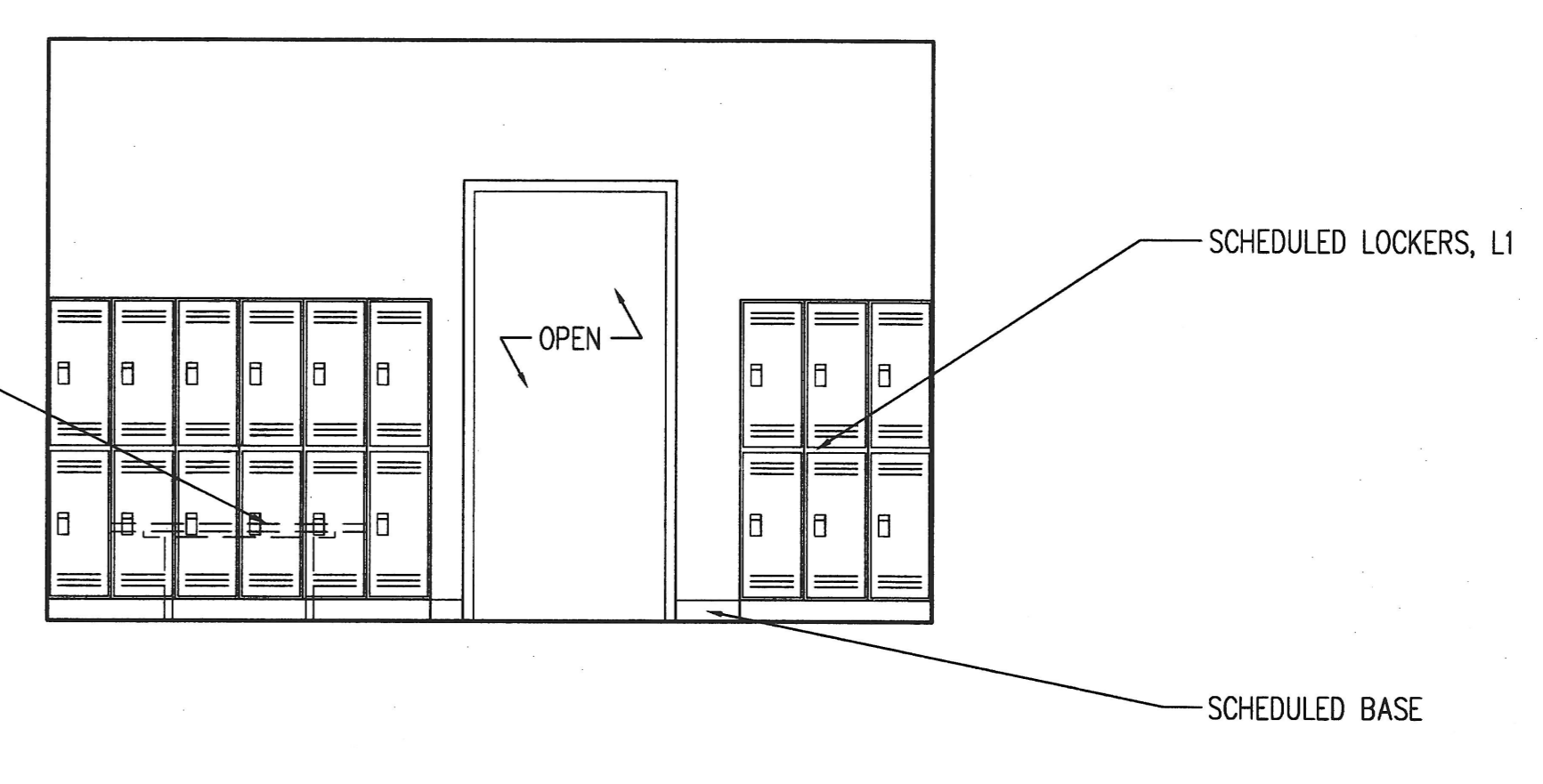
7 INTERIOR ELEVATION - MAIL ROOM
 3/8" = 1'-0"



8 INTERIOR ELEVATION - LOADING DOCK OPENING
 3/8" = 1'-0"



9 INTERIOR ELEVATION - TYP. LOCKER ROOM
 3/8" = 1'-0"



10 INTERIOR ELEVATION - TYP. LOCKER ROOM
 3/8" = 1'-0"

DESIGN COLLECTIVE

312 BLACKWELL STREET, SUITE 100
 DURHAM, NORTH CAROLINA 27701

601 EAST PRATT STREET, SUITE 300
 BALTIMORE, MARYLAND 21202

ARCHITECTURE, PLANNING, INTERIORS
 WWW.DESIGNCOLLECTIVE.COM

ISSUED FOR DATE
 BID SET 07.07.2011
 PERMIT 07.15.2011

OWNER / DEVELOPER
 Johns Hopkins Healthcare
 6704 Curtis Court
 Glen Burnie, MD 20160

PROJECT NAME
 Johns Hopkins
 Healthcare Masterplan

PROJECT ADDRESS
 6701 Curtis Court
 Suite D
 Glen Burnie, MD 20160

DCI Project No. 459-10-01

SEAL
 I certify that these documents were prepared or approved by me, and that I am a duly licensed architect under the laws of the State of Maryland, License No. 9684 - expiration date 09/11.

SHEET TITLE
 INTERIOR ELEVATIONS

SCALE
 3/8" = 1'-0"

SHEET NUMBER
 A401