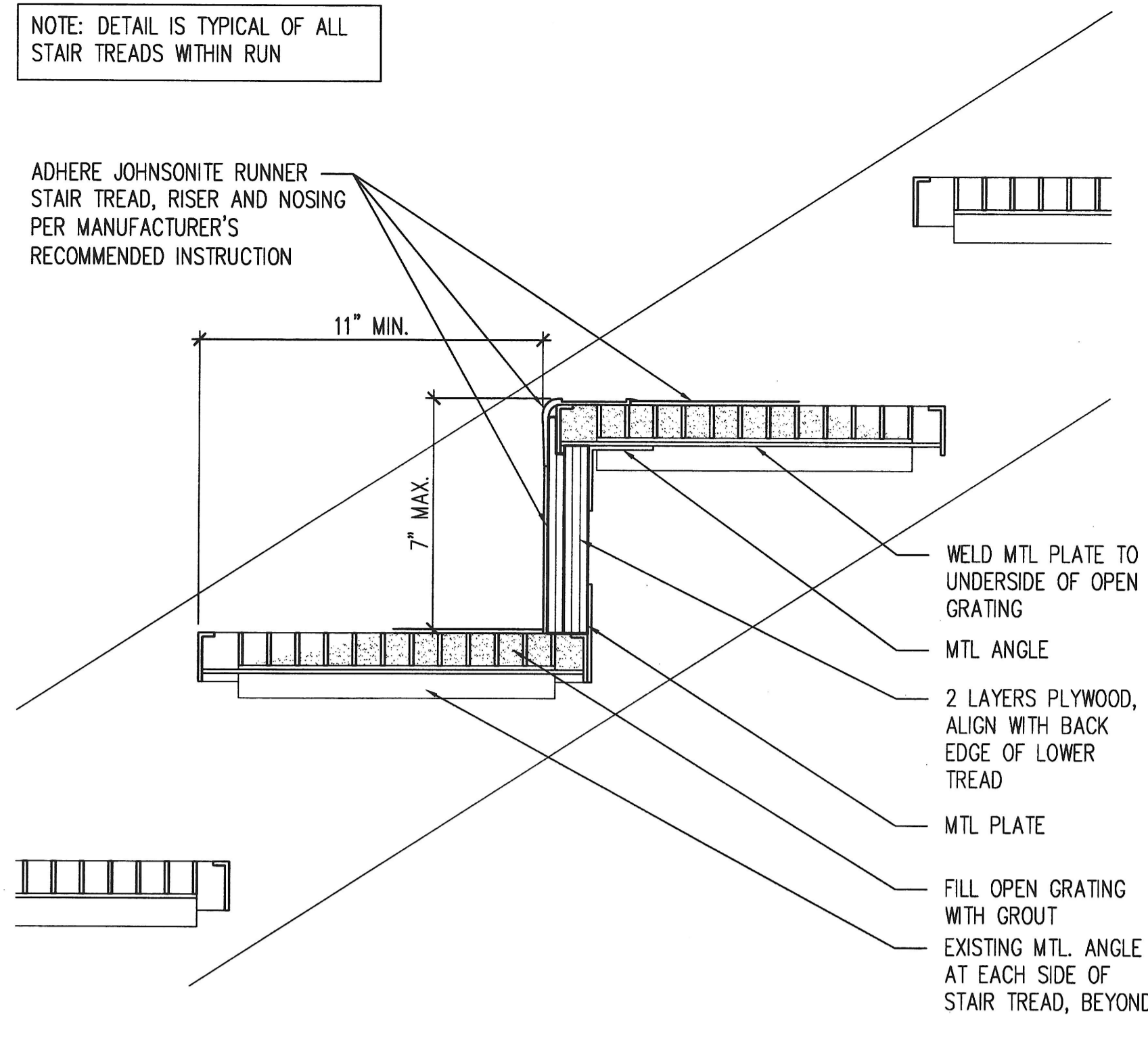
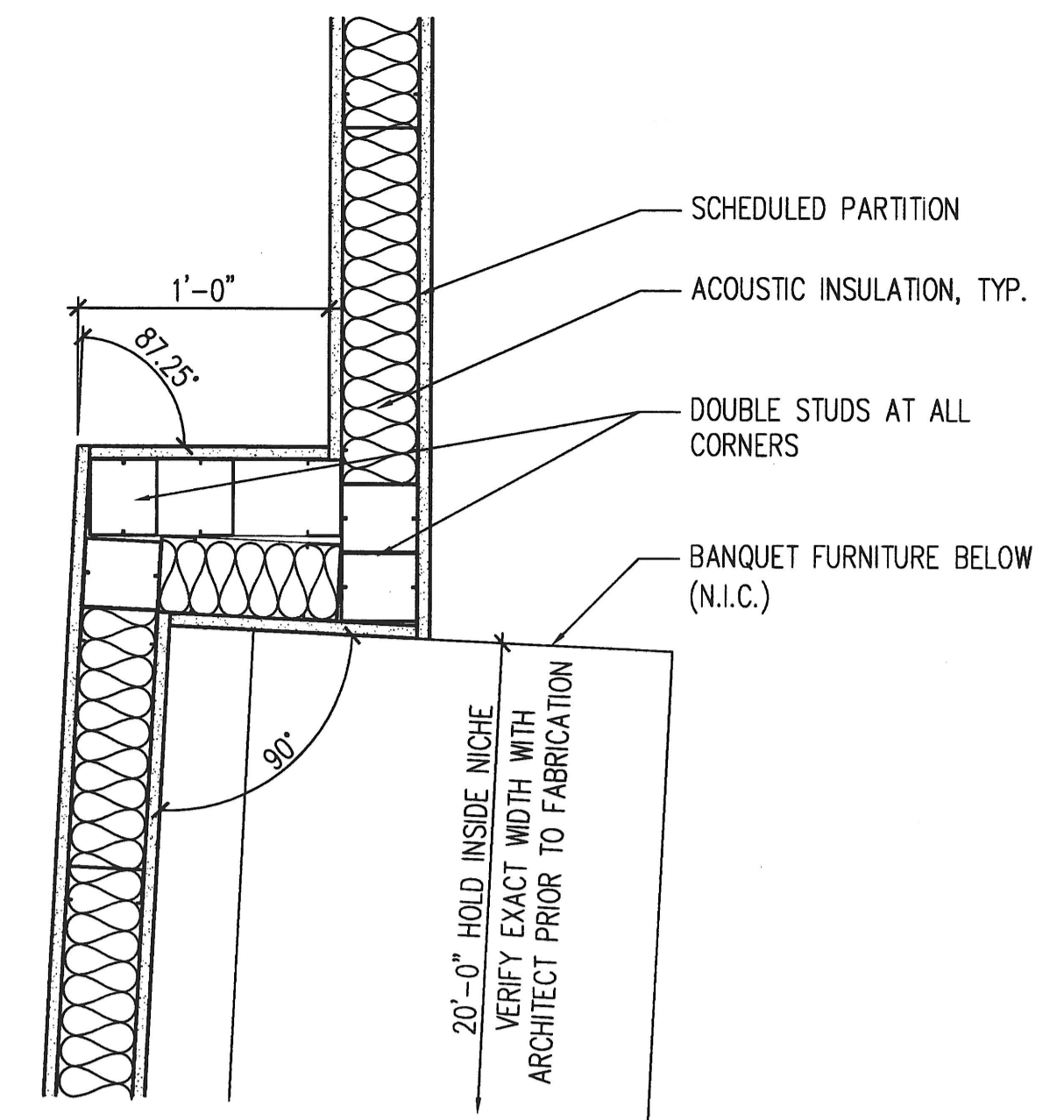


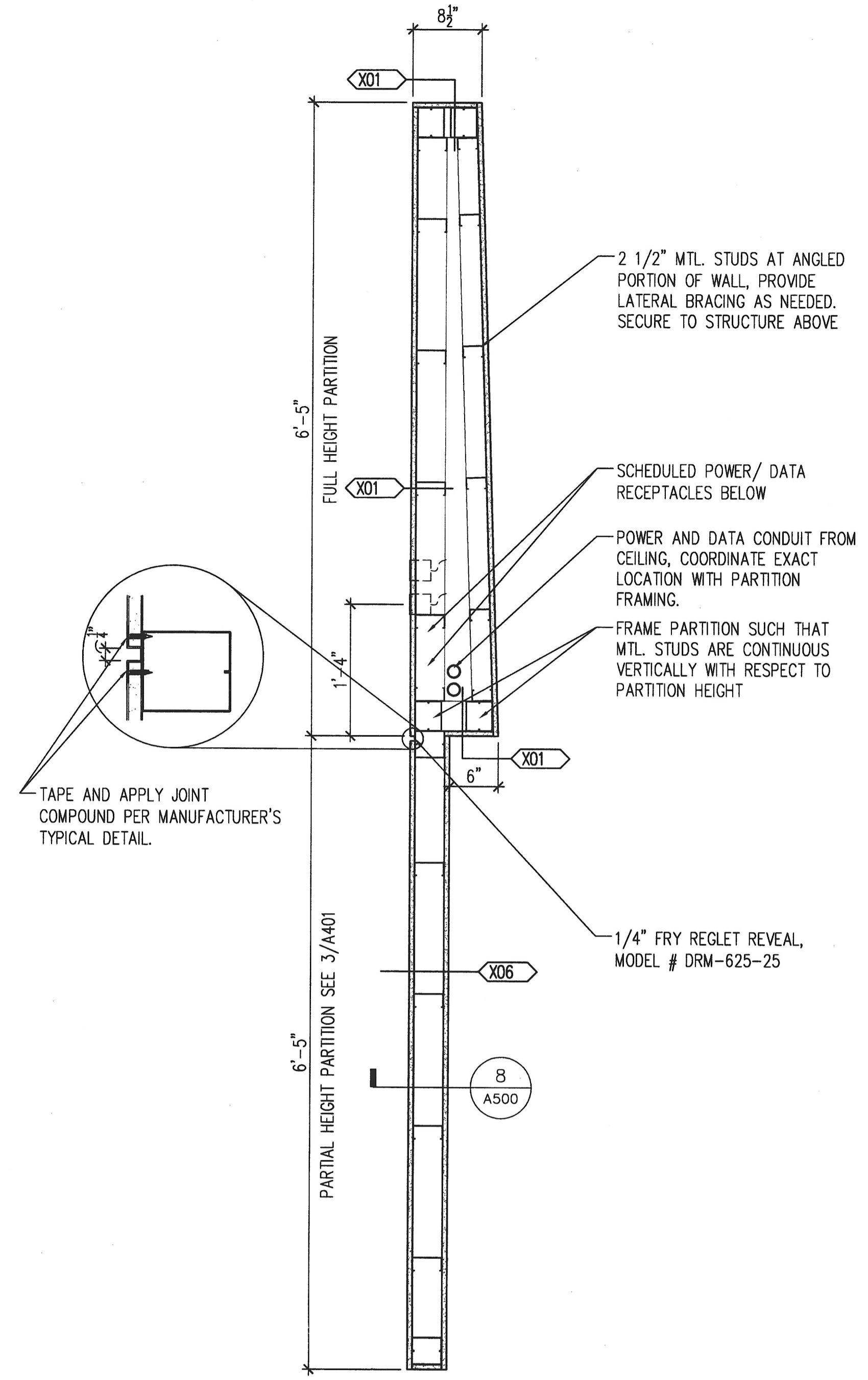
1 DETAIL - OPERABLE PARTITION TRACK
A500 1/2"=1'-0"



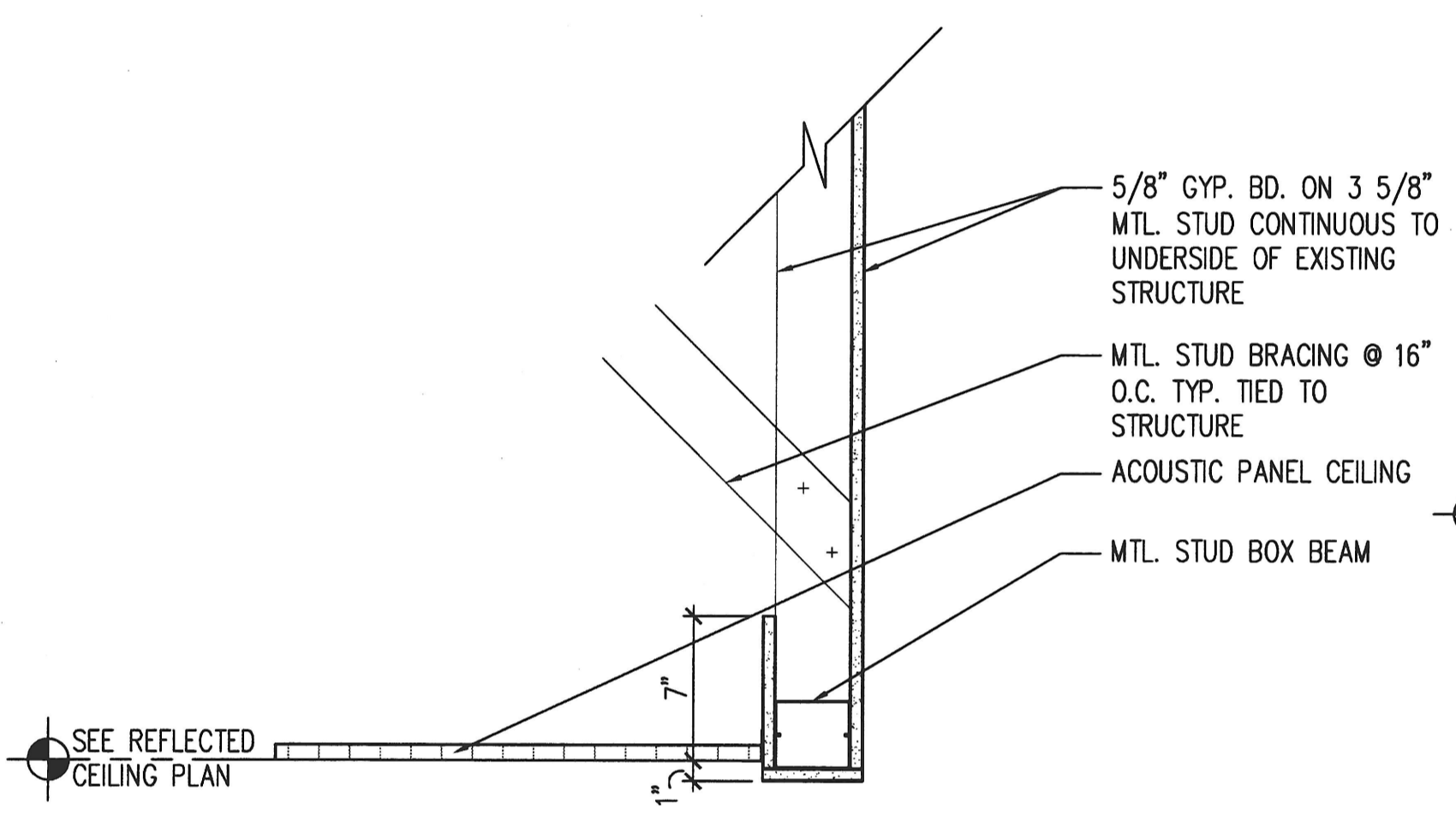
2 SECTION DETAIL - MEZZANINE STAIR
A500 3"=1'-0"



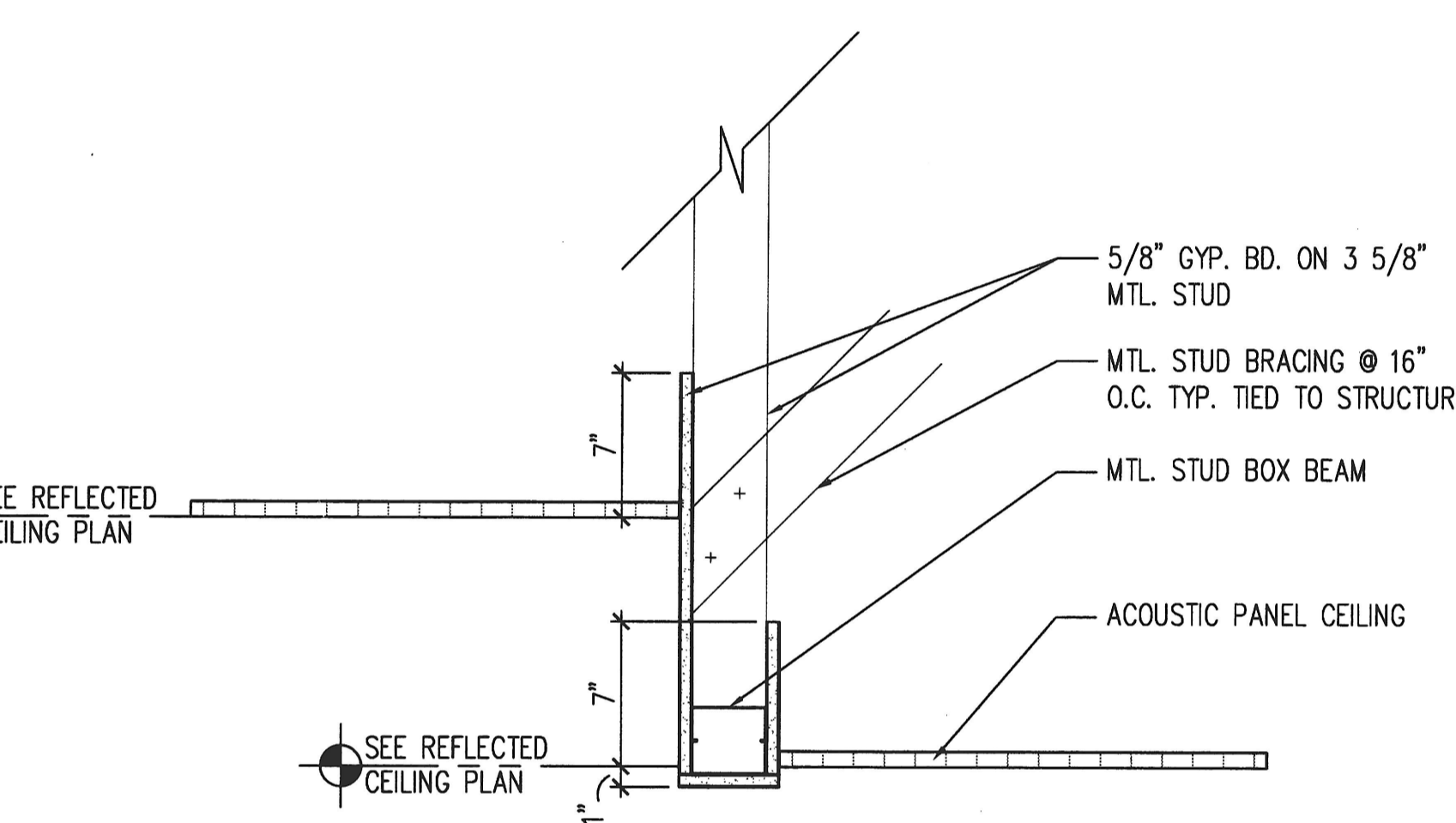
3 PLAN DETAIL - KITCHEN NICHE WALL
A500 1/2"=1'-0"



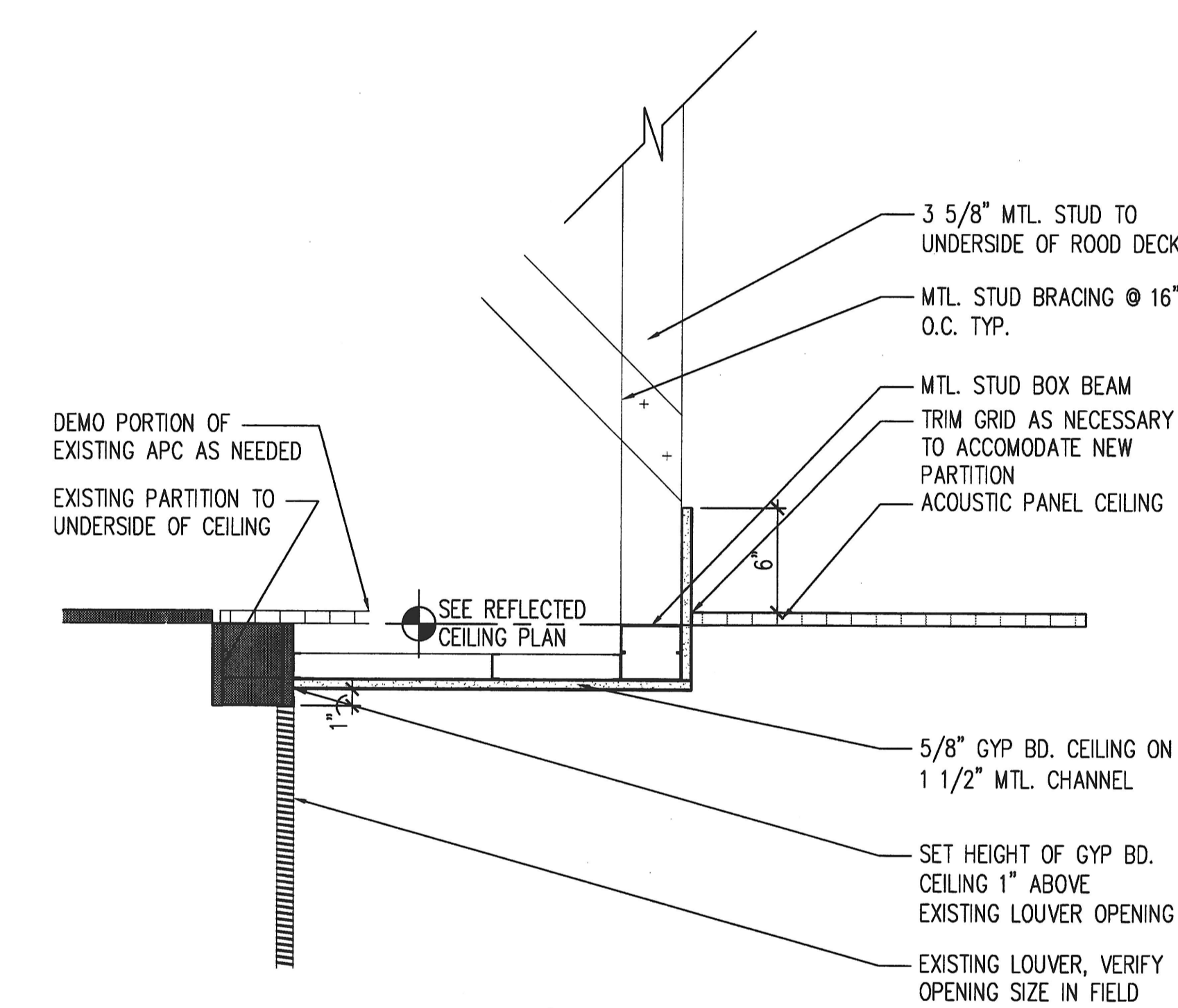
7 PLAN DETAIL - TYPICAL FEATURE PARTITION
A500 1"=1'-0"



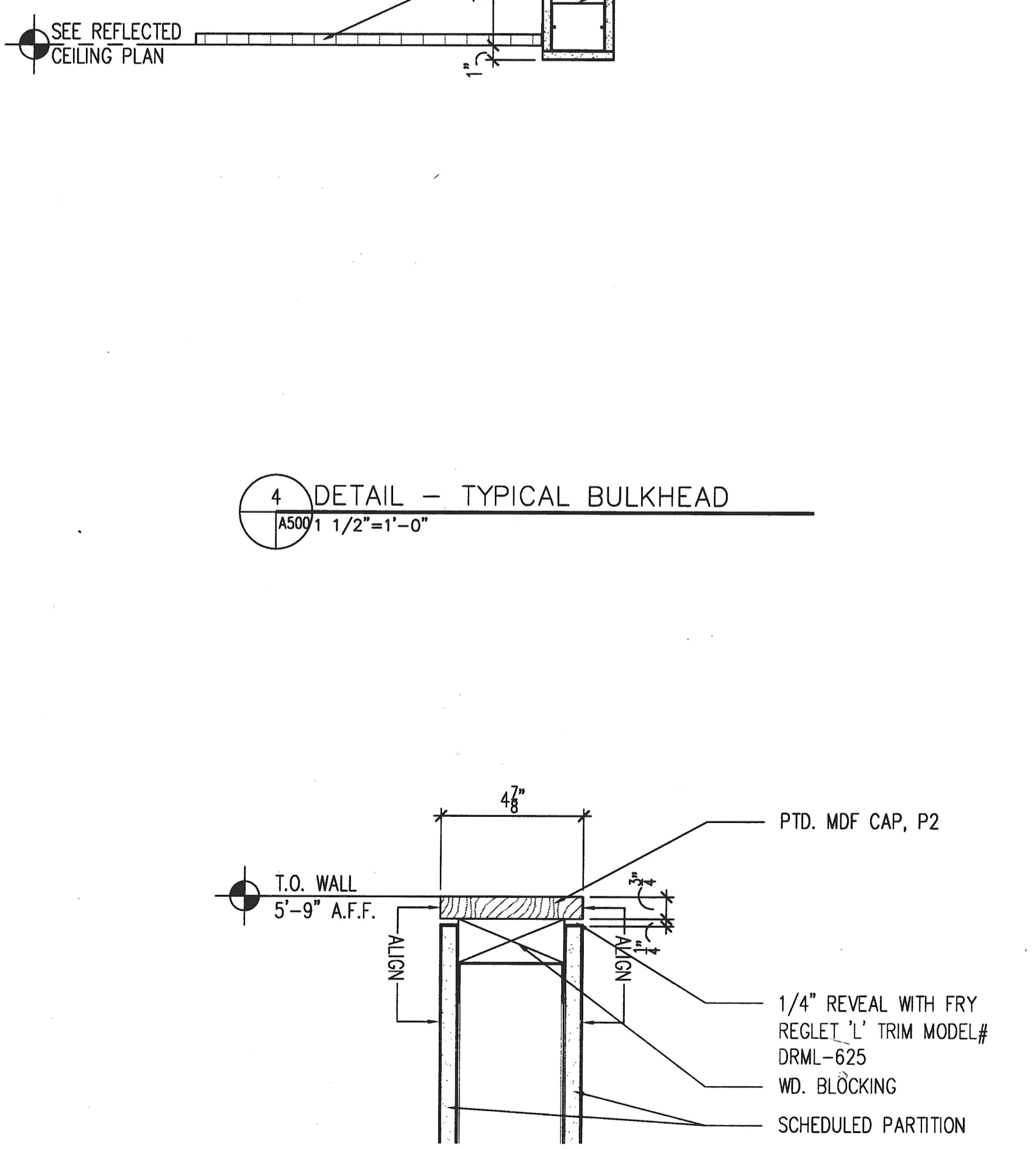
4 DETAIL - TYPICAL BULKHEAD
A500 1/2"=1'-0"



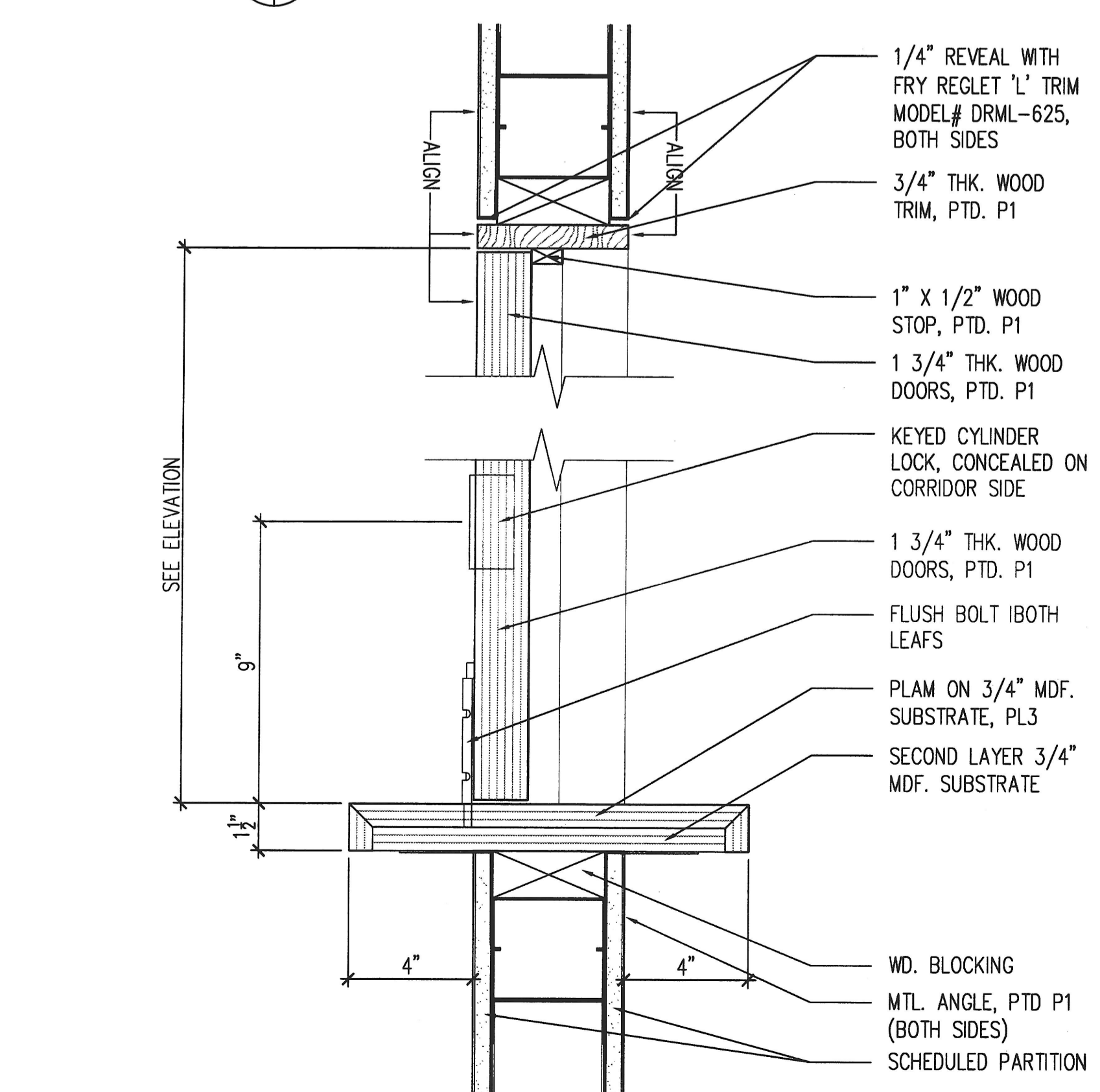
5 DETAIL - BULKHEAD
A500 1/2"=1'-0"



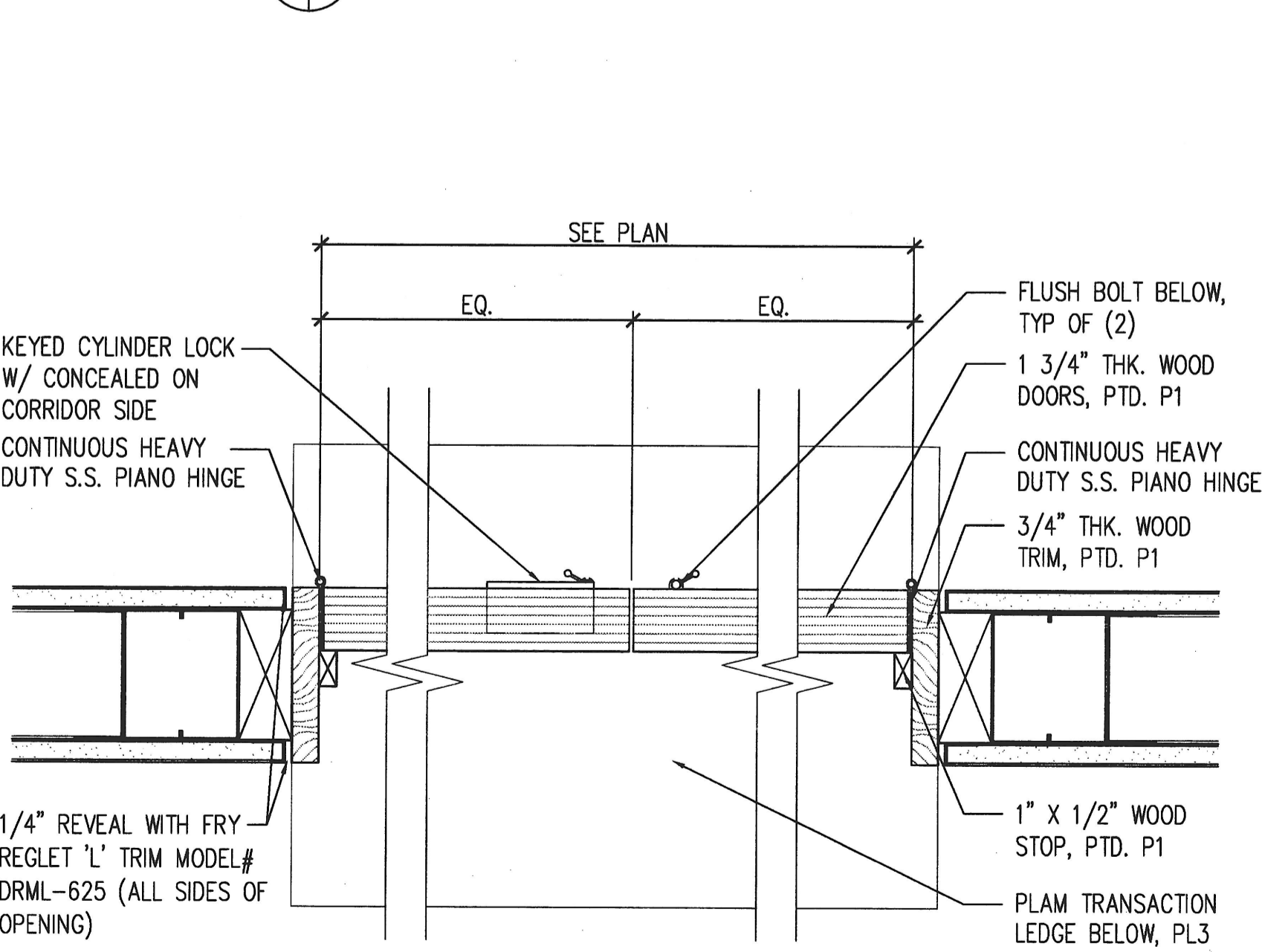
6 DETAIL - RAMP RAILING
A500 3"=1'-0"



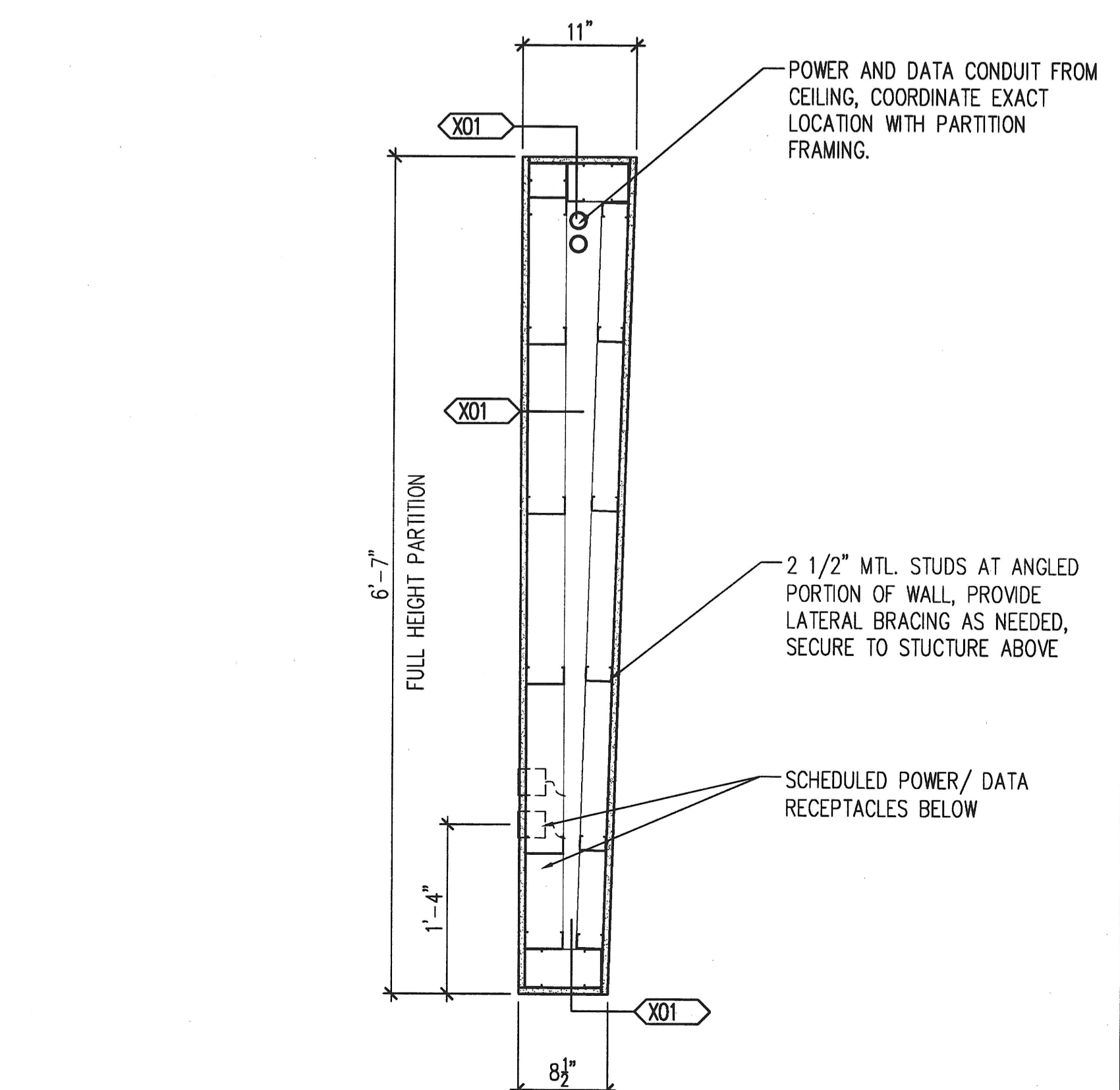
8 DETAIL - WOOD CAP
A500 3"=1'-0"



9 DETAIL - TRANSACTION LEDGE
A500 3"=1'-0"



10 PLAN DETAIL - TRANSACTION LEDGE
A500 3"=1'-0"



11 PLAN DETAIL - TYPICAL SHORT FEATURE PARTITION
A500 1"=1'-0"

ISSUED FOR	DATE
BID SET	07.07.2011
PERMIT	07.15.2011

OWNER / DEVELOPER
Johns Hopkins Healthcare
6704 Curtis Court
Glen Burnie, MD 20160

PROJECT NAME
Johns Hopkins Healthcare Masterplan

PROJECT ADDRESS
6701 Curtis Court
Suite D
Glen Burnie, MD 20160

PROJECT MANAGEMENT
DCI Project No. 459-10-01

SEAL
"I certify that these documents were prepared or approved by me, and that I am a duly licensed architect under the laws of the State of Maryland, License No. 9684, expiration date 09/11"

By: Fred S. Marino, AIA Date: 07.15.2011
Design Collective, INC ARCHITECT No. 9684

SHEET TITLE
DETAILS

SCALE
AS NOTED

SHEET NUMBER
A500

312 BLACKWELL STREET, SUITE 100
DURHAM, NORTH CAROLINA 27701
T: 919.381.9322 F: 919.381.9323

601 EAST PRATT STREET, SUITE 300
BALTIMORE, MARYLAND 21202
T: 410.685.6655 F: 410.539.6242

ARCHITECTURE, PLANNING, INTERIORS
WWW.DESIGNCOLLECTIVE.COM

DESIGN COLLECTIVE, INC. ALL RIGHTS RESERVED

Fred Marino
STATE OF MARYLAND