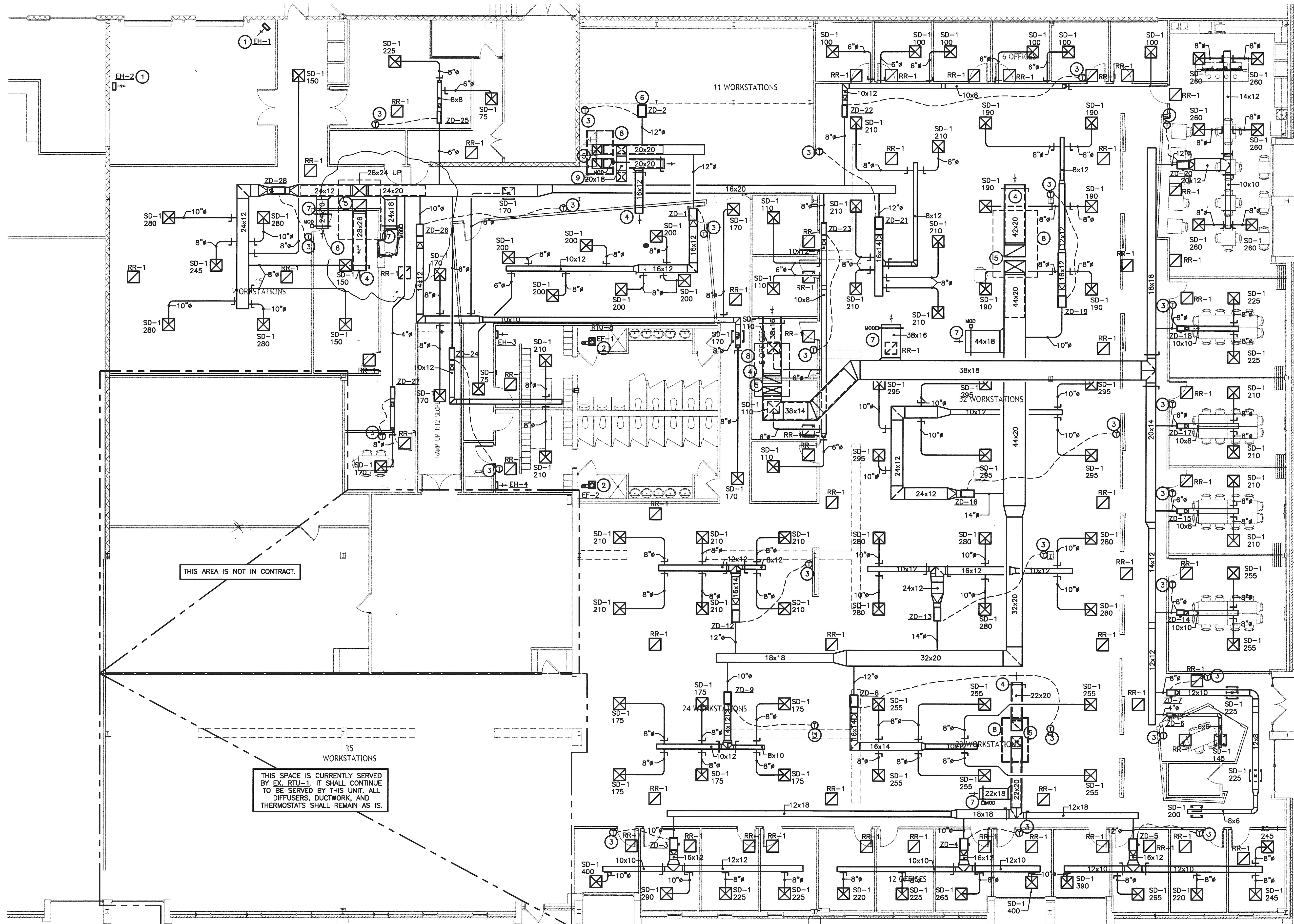


GENERAL NOTES:

- FOR MORE INFORMATION, SEE "LEGEND, SYMBOLS, AND ABBREVIATIONS" ON DRAWING M000 AND "MECHANICAL SPECIFICATIONS" ON DRAWING M400.
- ALL EXISTING DUCTWORK & ASSOCIATED COMPONENTS SHALL BE REMOVED AND DISCARDED UNLESS OTHERWISE NOTED. IF AN EXISTING DUCT IS OF THE SAME SIZE AS LISTED ON THE FLOOR PLAN ON M100, THE DUCT MAY BE RE-USED AT THE CONTRACTOR'S DISCRETION. EXISTING DUCTWORK FROM EXISTING UNITS SHALL BE REMOVED TO UNDERSIDE OF DECKING, FOR RECONNECTION TO NEW DUCTWORK AS INDICATED.
- ALL PVC PIPING IN THE RETURN AIR PLENUM ABOVE THE DROP CEILING NEEDS TO BE:
 - REMOVED, DISCARDED, AND REPLACED WITH STEEL OR COPPER PIPING OF THE SAME DIAMETER.
 - OR
 - THE PIPE NEEDS TO BE WRAPPED WITH A FIRE RESISTANT WRAP. WRAP SHALL BE MINIMUM 1/2" THICK, SCRIM ENCAPSULATED, AND MANUFACTURED BY FIREWRAP.
- EXISTING RADIANT FLOOR HEATERS SHALL PROVIDE HEATING FOR THE TENANT SPACE. EXISTING HOT WATER DUCT HEATERS SHALL REMAIN AND BE RE-USED TO PROVIDE HEATING FOR ROOFTOP UNITS.
- ALL ROOFTOP UNITS ARE ASSUMED TO BE IN GOOD WORKING CONDITION. UNITS ARE ASSUMED TO HAVE COOLING CAPACITIES LISTED IN THE EXISTING ROOFTOP UNIT SCHEDULE ON M300. THIS INFORMATION WAS OBTAINED FROM THE NAMEPLATE ON EACH UNIT.
- CONTRACT DOCUMENT DRAWINGS FOR MECHANICAL WORK ARE DIAGRAMMATIC AND ARE INTENDED TO CONVEY SCOPE AND GENERAL ARRANGEMENT ONLY.
- INSTALL ALL MECHANICAL EQUIPMENT AND APPURTENANCES IN ACCORDANCE WITH MANUFACTURERS' RECOMMENDATIONS, CONTRACT DOCUMENTS, AND APPLICABLE CODES AND REGULATIONS.
- PROVIDE VIBRATION ISOLATION FOR ALL NEW MECHANICAL EQUIPMENT TO PREVENT TRANSMISSION OF VIBRATION TO BUILDING STRUCTURE.
- ALL TESTS SHALL BE COMPLETED BEFORE ANY MECHANICAL EQUIPMENT OR DUCT INSULATION IS APPLIED.
- LOCATE ALL TEMPERATURE, PRESSURE, AND FLOW MEASURING DEVICES IN ACCESSIBLE LOCATIONS WITH STRAIGHT SECTION OF DUCT UP AND DOWNSTREAM AS RECOMMENDED BY THE MANUFACTURER FOR GOOD ACCURACY.
- COORDINATE ALL EQUIPMENT CONNECTIONS WITH MANUFACTURERS' CERTIFIED DRAWINGS. COORDINATE AND PROVIDE ALL DUCT AND PIPING TRANSITIONS REQUIRED FOR FINAL EQUIPMENT CONNECTIONS TO FURNISHED EQUIPMENT. FIELD VERIFY AND COORDINATE ALL DUCT AND PIPING DIMENSIONS BEFORE FABRICATION.
- THE LOCATIONS OF ALL ITEMS SHOWN ON THE DRAWINGS OR CALLED FOR IN THE SPECIFICATIONS THAT ARE NOT DEFINITELY FIXED BY DIMENSIONS ARE APPROXIMATE ONLY. THE EXACT LOCATIONS NECESSARY TO SECURE THE BEST CONDITIONS AND RESULTS MUST BE DETERMINED BY THE PROJECT SITE CONDITIONS AND SHALL HAVE THE APPROVAL OF THE ENGINEER BEFORE BEING INSTALLED. DO NOT SCALE DRAWINGS.
- ALL DUCTWORK, PIPING AND EQUIPMENT SUPPORTED FROM STRUCTURAL STEEL SHALL BE COORDINATED WITH GENERAL CONTRACTOR. ALL ATTACHMENTS TO STEEL BAR JOISTS, TRUSSES, OR JOIST GIRDERS SHALL BE AT PANEL POINTS. PROVIDE BEAM CLAMPS MEETING MSS STANDARDS. WELDING TO STRUCTURAL MEMBERS SHALL NOT BE PERMITTED. THE USE OF C-CLAMPS SHALL NOT BE PERMITTED.
- MECHANICAL EQUIPMENT, DUCTWORK, AND PIPING SHALL NOT BE SUPPORTED FROM METAL DECK.
- LOCATIONS AND SIZES OF ALL WALL, AND ROOF OPENINGS SHALL BE COORDINATED WITH ALL OTHER TRADES INVOLVED.
- CERTAIN ITEMS SUCH AS RISES AND DROPS IN DUCTWORK, ACCESS DOORS, VOLUME DAMPERS, ETC., ARE INDICATED ON THE CONTRACT DOCUMENT DRAWINGS FOR CLARITY FOR A SPECIFIC LOCATION REQUIREMENT AND SHALL NOT BE INTERPRETED AS THE EXTENT OF THE REQUIREMENTS FOR THESE ITEMS.
- ALL DUCTWORK DIMENSIONS, AS SHOWN ON THE DRAWINGS, ARE INTERNAL CLEAR DIMENSIONS AND DUCT SIZE SHALL BE INCREASED TO COMPENSATE FOR DUCT LINING THICKNESS.
- RUNS OF FLEXIBLE DUCT SHALL NOT EXCEED 5 FEET.
- ALL DUCTWORK SHALL BE COORDINATED WITH ALL TRADES INVOLVED. OFFSETS IN DUCTS, INCLUDING DIVIDED DUCTS AND TRANSITIONS AROUND OBSTRUCTIONS, SHALL BE PROVIDED AT NO ADDITIONAL COST TO THE OWNER.
- ALL SUPPLY/RETURN AIR DEVICES ARE INDICATED ON THIS DRAWING; REFER TO DIFFUSER, REGISTER, & GRILLE SCHEDULE ON DWG. M300 FOR MORE INFORMATION.
- EXISTING DUCT SMOKE DETECTORS MAY BE RE-USED IF THEY ARE IN GOOD WORKING CONDITION. DETECTORS SHALL BE REPLACED IF THEY ARE FOUND TO BE INOPERABLE.

REFERENCE NOTES:

- MOUNT UNIT HEATER AT 9 FEET ABOVE FINISHED FLOOR.
- 6" EXH DUCT UP TO ROOF. TERMINATE WITH A GOOSENECK ON ROOF. PROVIDE BIRDSCREEN AT DUCT TERMINATION.
- PROVIDE THERMOSTAT AND 100 FEET OF CONTROL WIRE WITH INDOOR UNIT. MOUNT THERMOSTAT 48 INCHES ABOVE FINISHED FLOOR.
- RETURN AIR DUCT SHALL BE AN OED; PROVIDE WITH BIRDSCREEN AND MVD.
- NEW SUPPLY/RETURN DUCTWORK SHALL TURN UP AND TRANSITION TO EXISTING ROOFTOP UNIT DUCT CONNECTIONS. ACOUSTICALLY LINE FIRST 10 FEET OF BOTH SUPPLY & RETURN DUCTWORK.
- ZD-2 SHALL BE CONNECTED TO EXISTING SUPPLY DUCTWORK THAT EXISTS IN THE MEZZANINE. DUCTWORK SHALL BE CHECKED FOR LEAKAGE; LEAKS SHALL BE PLUGGED AND SEALED. DUCTWORK SHALL BE RE-PAINTED TO COLOR OF ARCHITECTS CHOOSING. RETURN DUCTWORK FROM OLD EX_RTU-2 SHALL BE REMOVED.
- BYPASS DUCT; PROVIDE WITH MOD.
- OUTLINE OF EXISTING UNIT ON ROOF.
- BYPASS DUCT SHALL TAP OFF TOP OF SUPPLY DUCT, ROUTE OVER TOP OF RETURN DUCT, DROP, AND CONNECT TO SIDE OF RETURN DUCT. PROVIDE WITH MOD.



FLOOR PLAN - HVAC N
SCALE: 1/8" = 1'-0"

DESIGN COLLECTIVE

312 BLACKWELL STREET, SUITE 100
DURHAM, NORTH CAROLINA 27703
T: 919.381.9322 F: 919.381.9323

601 EAST PRATT STREET, SUITE 300
BALTIMORE, MARYLAND 21202
T: 410.685.6655 F: 410.539.6242

ARCHITECTURE, PLANNING, INTERIORS
WWW.DESIGNCOLLECTIVE.COM

DESIGN COLLECTIVE, INC. ALL RIGHTS RESERVED

ISSUED FOR	DATE
REV SET	07.07.2011
PERMIT	07.13.2011
ADDENDUM #1	07.19.2011
ASB #1	07.29.2011
VE REVISIONS	08.18.2011
VVT REVISIONS	09.01.2011

CONSULTANT
THIRTY CENTURY
ENGINEERING
CONSULTING ENGINEERS - PLANNERS
10770 GILROY ROAD
HUNT VALLEY, MD 20881
Phone: 443-589-2400 Fax: 443-589-2401

OWNER / DEVELOPER
Johns Hopkins Healthcare
6704 Curtis Court
Glen Burnie, MD 21060

PROJECT NAME
**Johns Hopkins
Healthcare Masterplan**

PROJECT ADDRESS
6701 Curtis Court
Suite D
Glen Burnie, MD 20160
PROJECT MANAGEMENT
DCI Project No. 459-10-01

SEAL
"Professional Certification. I hereby certify that these documents were prepared or approved by me, and that I am a duly licensed professional engineer under the laws of the State of Maryland, License No. 33030
Expiration Date: 07-06-2012

SHEET TITLE
**FLOOR PLAN -
HVAC**

SCALE
AS SHOWN

SHEET NUMBER
M100

